



US009436376B2

(12) **United States Patent**
Shinozaki et al.

(10) **Patent No.:** **US 9,436,376 B2**
(45) **Date of Patent:** **Sep. 6, 2016**

(54) **LOAD REQUIRED TO CANCEL AN INPUT ON A TOUCH SENSOR IS ADJUSTED WHEN THE SLIDE OF A TOUCH OBJECT IS DETECTED**

(75) Inventors: **Takayuki Shinozaki**, Kanagawa (JP);
Makoto Tomizu, Kanagawa (JP)

(73) Assignee: **KYOCERA Corporation**, Kyoto (JP)

(*) Notice: Subject to any disclaimer, the term of this patent is extended or adjusted under 35 U.S.C. 154(b) by 182 days.

(21) Appl. No.: **13/635,829**

(22) PCT Filed: **Feb. 24, 2011**

(86) PCT No.: **PCT/JP2011/001077**

§ 371 (c)(1),
(2), (4) Date: **Sep. 18, 2012**

(87) PCT Pub. No.: **WO2011/114630**

PCT Pub. Date: **Sep. 22, 2011**

(65) **Prior Publication Data**

US 2013/0016056 A1 Jan. 17, 2013

(30) **Foreign Application Priority Data**

Mar. 18, 2010 (JP) 2010-062971

(51) **Int. Cl.**
G06F 3/041 (2006.01)
G06F 3/0486 (2013.01)

(52) **U.S. Cl.**
CPC **G06F 3/0486** (2013.01); **G06F 3/0414**
(2013.01); **G06F 3/0416** (2013.01)

(58) **Field of Classification Search**
None
See application file for complete search history.

(56) **References Cited**

U.S. PATENT DOCUMENTS

2002/0015064 A1* 2/2002 Robotham et al. 345/863
2004/0021643 A1* 2/2004 Hoshino et al. 345/173
2010/0057235 A1* 3/2010 Wang et al. 700/94

FOREIGN PATENT DOCUMENTS

CN 1845043 A 10/2006
JP 2000-200147 A 7/2000
JP 2004070492 A * 3/2004

(Continued)

OTHER PUBLICATIONS

An Office Action; "Decision of Rejection," issued by the Japanese Patent Office on Nov. 12, 2013, which corresponds to Japanese Patent Application No. 2012-505475 and is related to U.S. Appl. No. 13/635,829; with English concise explanation.

(Continued)

Primary Examiner — Ilana Spar

Assistant Examiner — Kirk Hermann

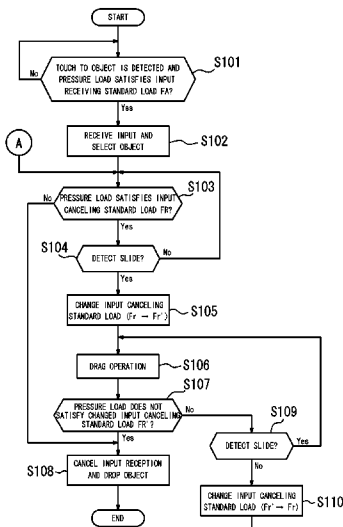
(74) *Attorney, Agent, or Firm* — Studebaker & Brackett PC

(57) **ABSTRACT**

An electronic device for receiving an input based on a pressure load that reduces a risk of ending a drag operation despite a user's intention is provided.

The electronic device includes a touch sensor configured to detect a touch by a touch object, a load detection unit configured to detect a pressure load on a touch face of the touch sensor, and a control unit configured to enter or cancel an input receiving state for receiving an input based on the pressure load detected by the load detection unit. The control unit, in the input receiving state, controls to make a standard load for canceling the input receiving state when a slide of the touch object touching the touch face is detected and a standard load for canceling the input receiving state when the slide of the touch object touching the touch face is not detected different from each other.

4 Claims, 9 Drawing Sheets



(56)

References Cited

FOREIGN PATENT DOCUMENTS

JP	2005-196810	A	7/2005
JP	2006-039745	A	2/2006
JP	2006-311224	A	11/2006
JP	2007080110	A	* 3/2007

OTHER PUBLICATIONS

An Office Action: "Notice of Reasons for Rejection," issued by the Japanese Patent Office on Aug. 13, 2013, which corresponds to

Japanese Patent Application No. 2012-505475 and is related to U.S. Appl. No. 13/635,829; with Concise Explanation.

International Search Report; PCT/JP2011/001077; Apr. 12, 2011.

An Office Action; "Notification of the First Office Action," issued by the State Intellectual Property Office of China on Sep. 25, 2014, which corresponds to Chinese Patent Application No. 201180014549.0 and is related to U.S. Appl. No. 13/635,829; with English translation.

* cited by examiner

FIG. 1

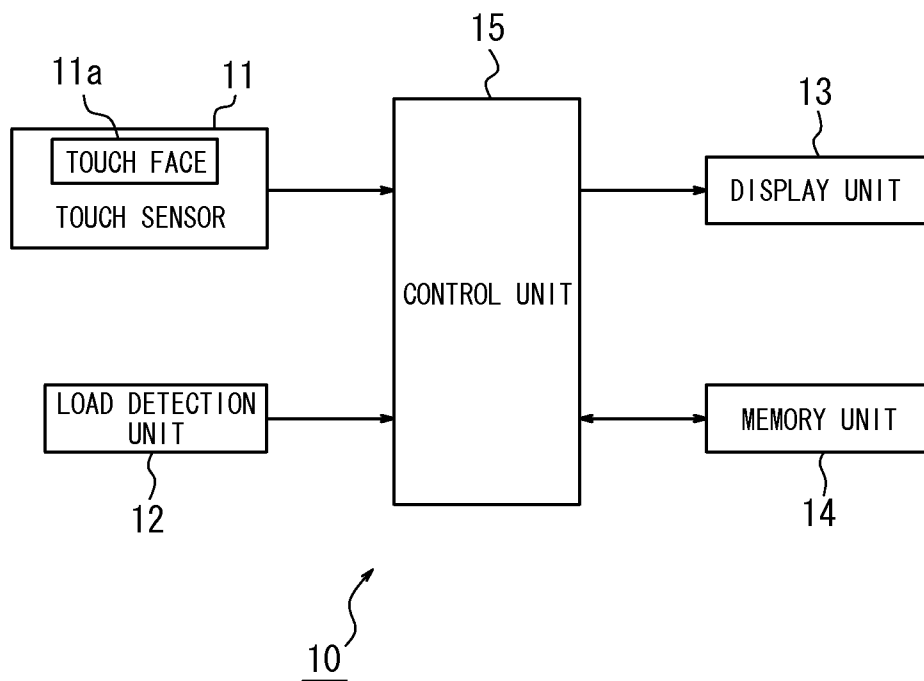


FIG. 2

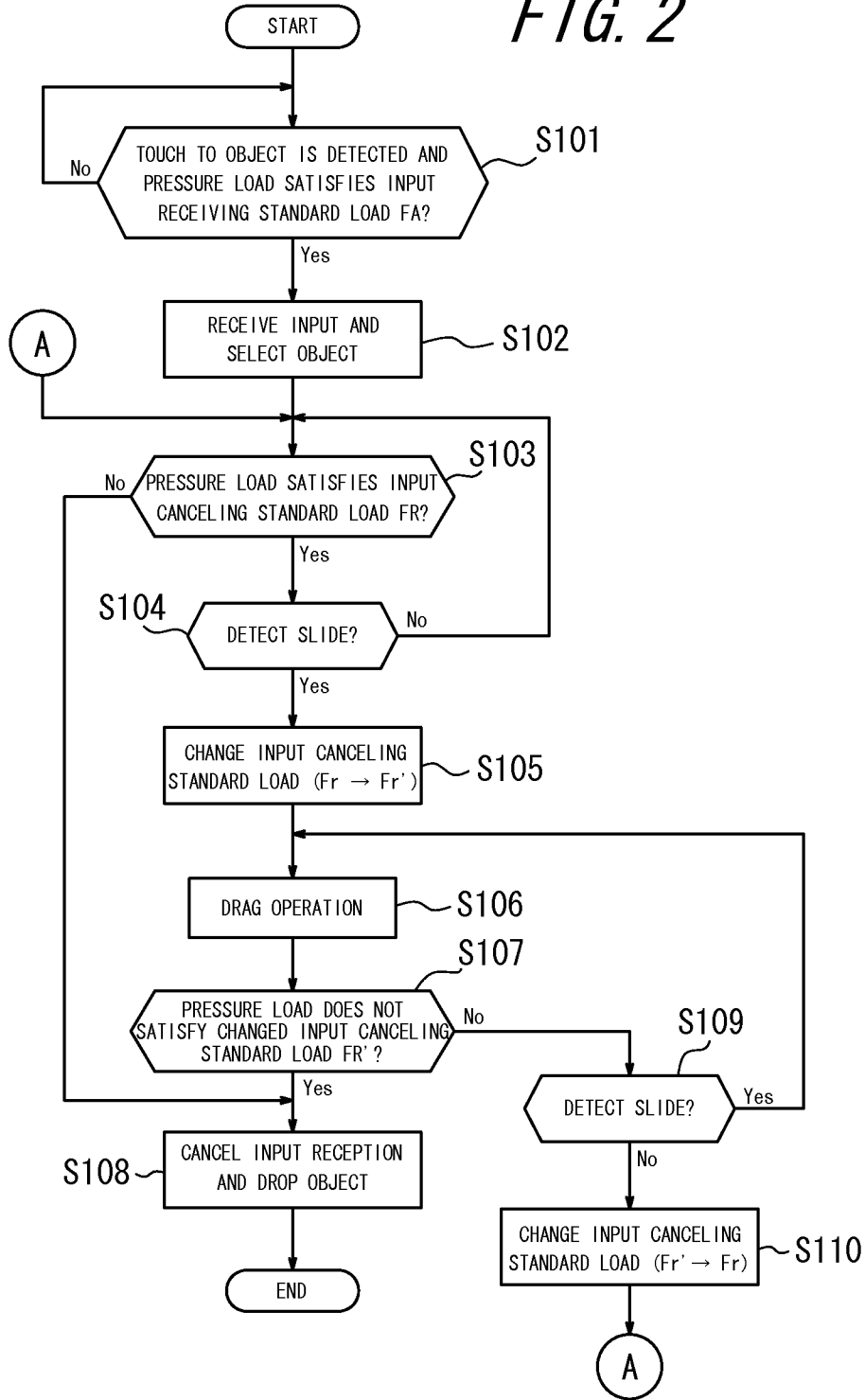
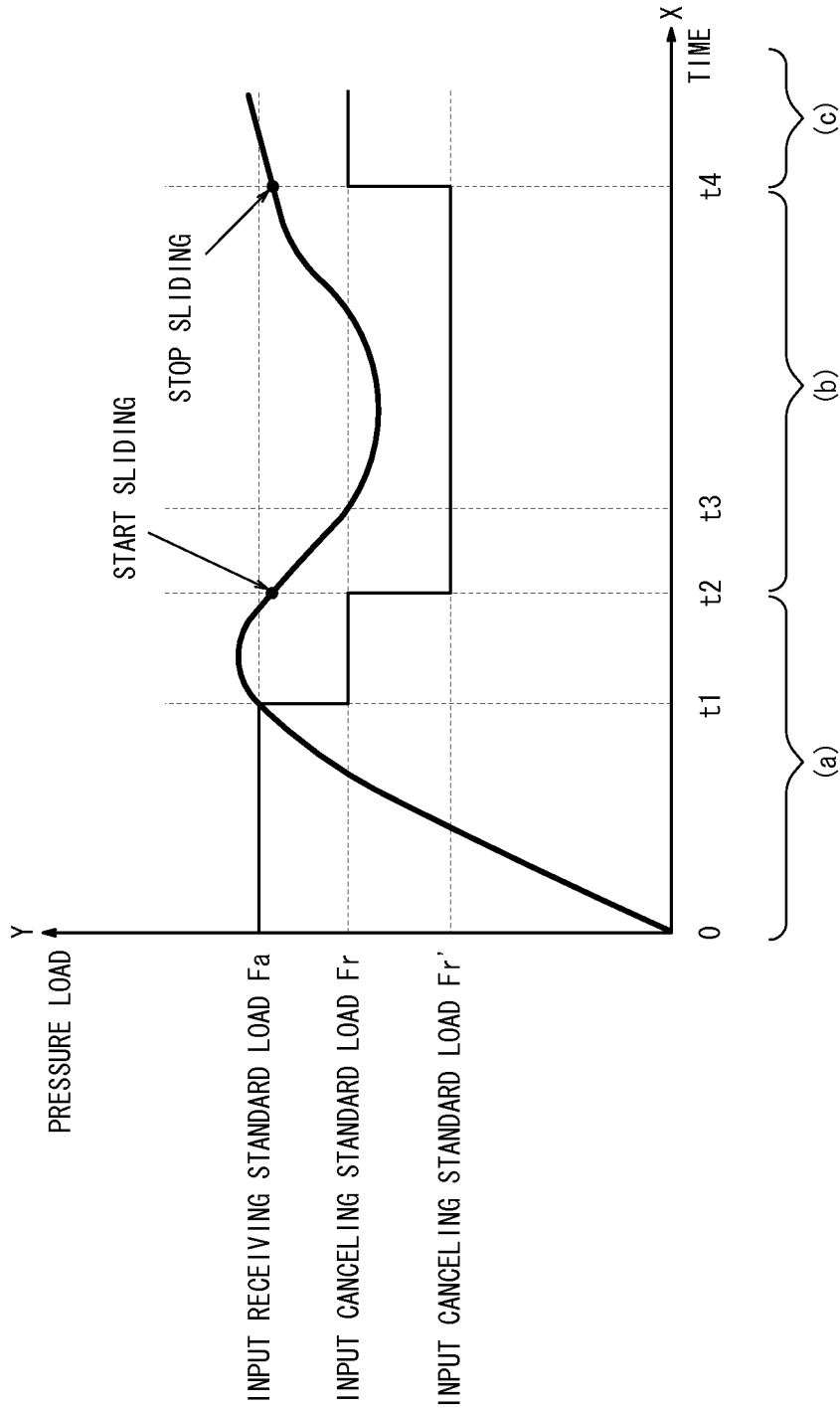


FIG. 3



Explore Litigation Insights

Docket Alarm provides insights to develop a more informed litigation strategy and the peace of mind of knowing you're on top of things.

Real-Time Litigation Alerts



Keep your litigation team up-to-date with **real-time alerts** and advanced team management tools built for the enterprise, all while greatly reducing PACER spend.

Our comprehensive service means we can handle Federal, State, and Administrative courts across the country.

Advanced Docket Research



With over 230 million records, Docket Alarm's cloud-native docket research platform finds what other services can't. Coverage includes Federal, State, plus PTAB, TTAB, ITC and NLRB decisions, all in one place.

Identify arguments that have been successful in the past with full text, pinpoint searching. Link to case law cited within any court document via Fastcase.

Analytics At Your Fingertips



Learn what happened the last time a particular judge, opposing counsel or company faced cases similar to yours.

Advanced out-of-the-box PTAB and TTAB analytics are always at your fingertips.

API

Docket Alarm offers a powerful API (application programming interface) to developers that want to integrate case filings into their apps.

LAW FIRMS

Build custom dashboards for your attorneys and clients with live data direct from the court.

Automate many repetitive legal tasks like conflict checks, document management, and marketing.

FINANCIAL INSTITUTIONS

Litigation and bankruptcy checks for companies and debtors.

E-DISCOVERY AND LEGAL VENDORS

Sync your system to PACER to automate legal marketing.