



US008655838B2

(12) **United States Patent**  
**Wright**

(10) **Patent No.:** **US 8,655,838 B2**  
(45) **Date of Patent:** **Feb. 18, 2014**

(54) **SELECTION OF PEERS TO CLUSTER WITHIN A PEER-TO-PEER NETWORK**

(75) Inventor: **Steven Wright**, Roswell, GA (US)

(73) Assignee: **AT&T Intellectual Property I, L.P.**, Atlanta, GA (US)

(\* ) Notice: Subject to any disclaimer, the term of this patent is extended or adjusted under 35 U.S.C. 154(b) by 760 days.

(21) Appl. No.: **12/034,153**

(22) Filed: **Feb. 20, 2008**

(65) **Prior Publication Data**

US 2009/0210545 A1 Aug. 20, 2009

(51) **Int. Cl.**  
**G06F 17/00** (2006.01)

(52) **U.S. Cl.**  
USPC ..... **707/622; 707/227; 707/230**

(58) **Field of Classification Search**  
USPC ..... 707/622; 709/227, 230  
See application file for complete search history.

(56) **References Cited**

**U.S. PATENT DOCUMENTS**

6,415,280	B1 *	7/2002	Farber et al. ....	707/698
2003/0040316	A1 *	2/2003	Stanforth et al. ....	455/445
2004/0044790	A1 *	3/2004	Loach et al. ....	709/241
2006/0056336	A1 *	3/2006	Dacosta .....	370/328
2007/0016939	A1 *	1/2007	Leibovitz et al. ....	726/3
2007/0174443	A1	7/2007	Shaheen	
2007/0291715	A1 *	12/2007	Laroia et al. ....	370/338
2008/0040606	A1 *	2/2008	Narayanan et al. ....	713/169

**OTHER PUBLICATIONS**

Srivatsa, M; Liu, L, Large Scaling Unstructured Peer-to-Peer Networks with Heterogeneity-Aware Topology and Routing, IEEE Trans. on Parallel and Distr. Sys., v17, Nov. 2006.  
Huang, Y; Chen, Y; Jana, R; Jiang, H; Rabinovich, M; Reibman, A, Wei, B; Xiao, Z; Capacity Analysis of MediaGrid: . . . , IEEE Jnl on Selected Areas in Comm; v25, Jan. 2007.  
Ramaswamy, L; Gedik, B; Liu, L; A Distributed Approach to Node Clustering in Decentralized Peer-to-Peer Networks, IEEE Trans on Parallel and Distr. Sys, v16, Sep. 2005.  
Chen, Y; Huang, Y; Jana, R; Jiang, H; Rabinovich, M; Wei, B; Xiao, Z; When is P2P Technology Beneficial for IPTV Services?, NOSSDAV 2007.  
Technical White Paper Smart Card in IMS; Gemalto, Feb. 2007.  
<http://en.wikipedia.org/wiki/IMSI>, last updated Feb. 12, 2008.  
<http://en.wikipedia.org/wiki/MEID>, last updated Dec. 8, 2007.  
<http://en.wikipedia.org/wiki/DOCSIS>, last updated Feb. 4, 2008.

\* cited by examiner

*Primary Examiner* — Jude Jean Gilles

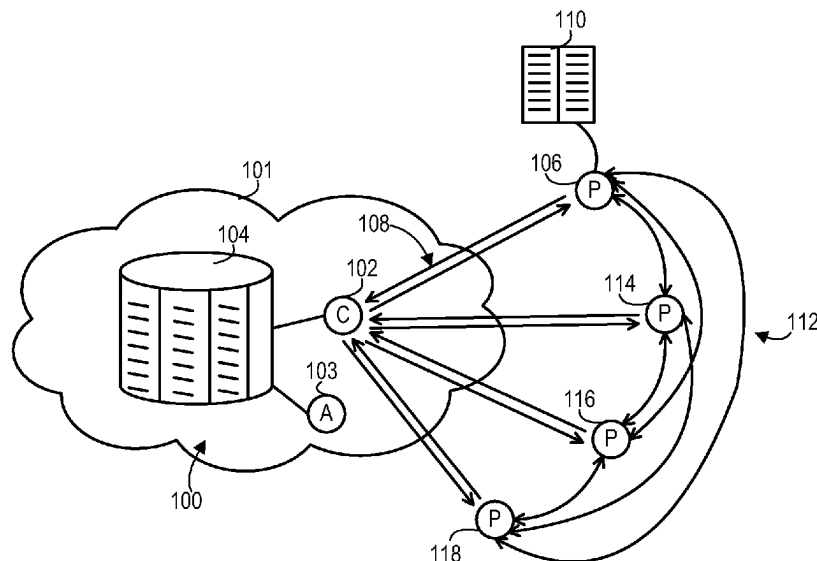
*Assistant Examiner* — Jaren M Means

(74) *Attorney, Agent, or Firm* — Parks IP Law LLC; Jennifer P. Medlin, Esq.

(57) **ABSTRACT**

Peer-to-peer networks may be established by considering various characteristics of the peers when clustering the peers within the network. The characteristics may include operational criteria such as the cost of data transfer by each peer, the type and status of power being supplied to each peer, and the bandwidth available to each peer. The peer-to-peer networks may be established by requiring credentials to gain access to the peer-to-peer network, where those credentials may be a network access identifier that has previously been used to gain access to an underlying data network of the peer-to-peer network. The operational criteria used to select peers for clustering may be stored and accessed through association to the credentials used to gain access to the peer-to-peer network.

**18 Claims, 6 Drawing Sheets**



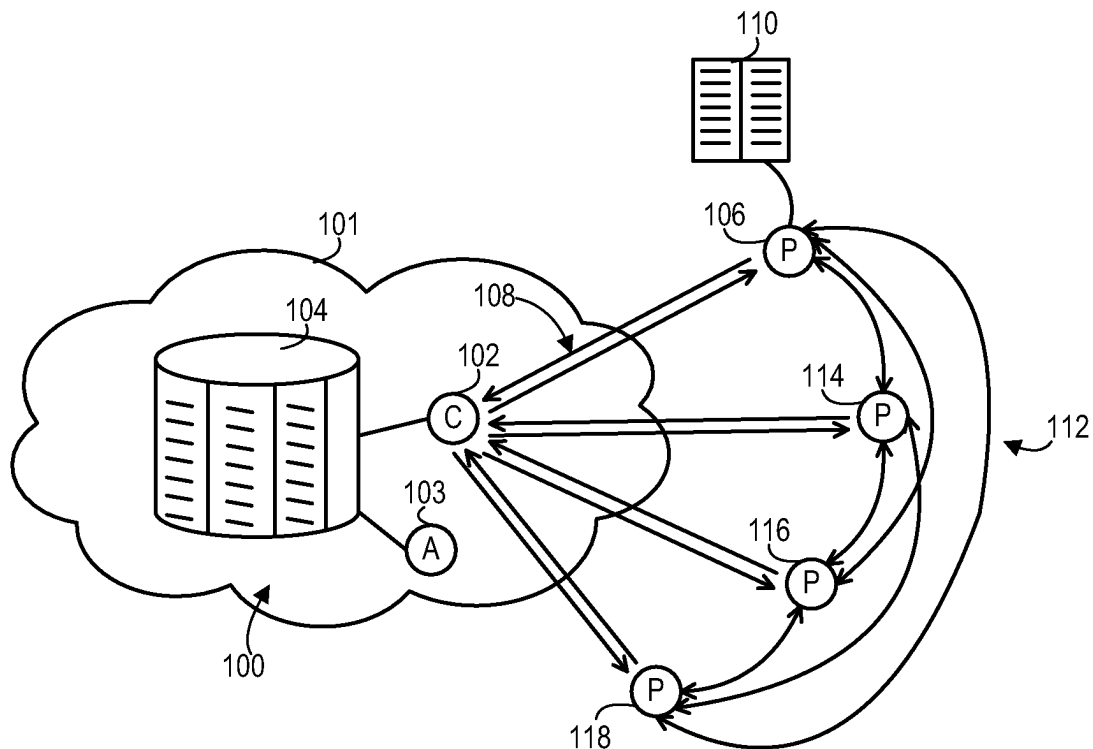


FIG. 1A

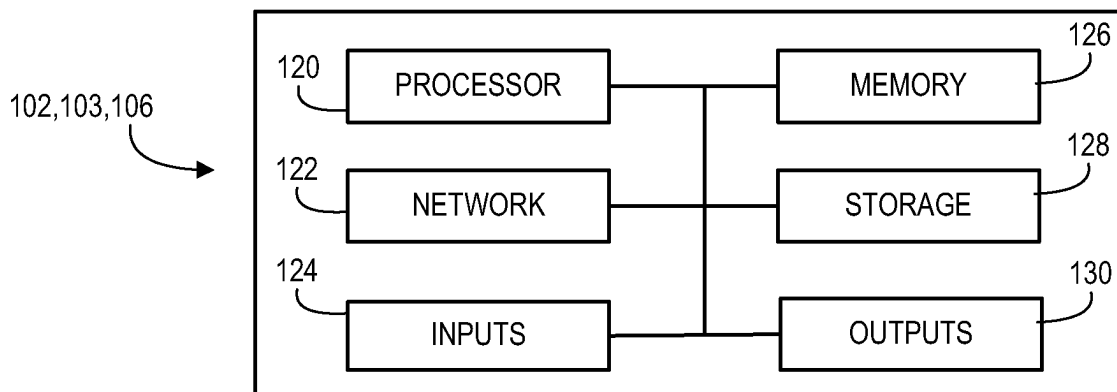


FIG. 1B

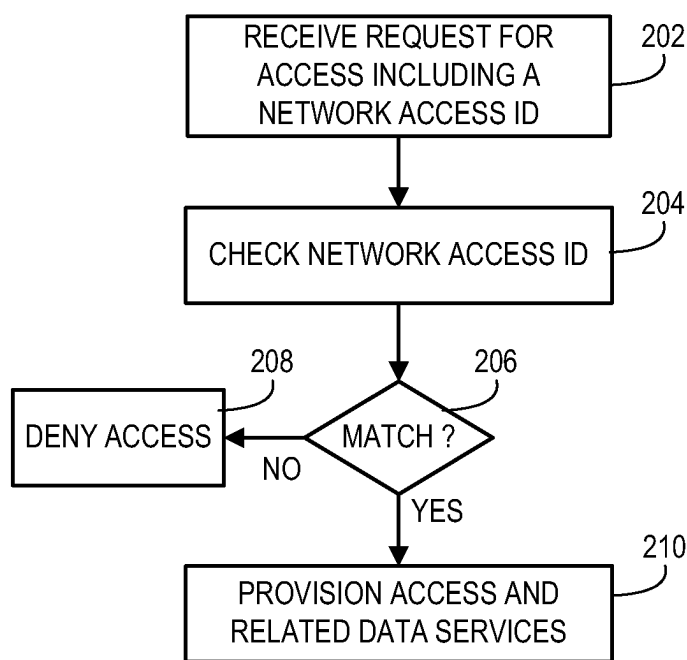


FIG. 2

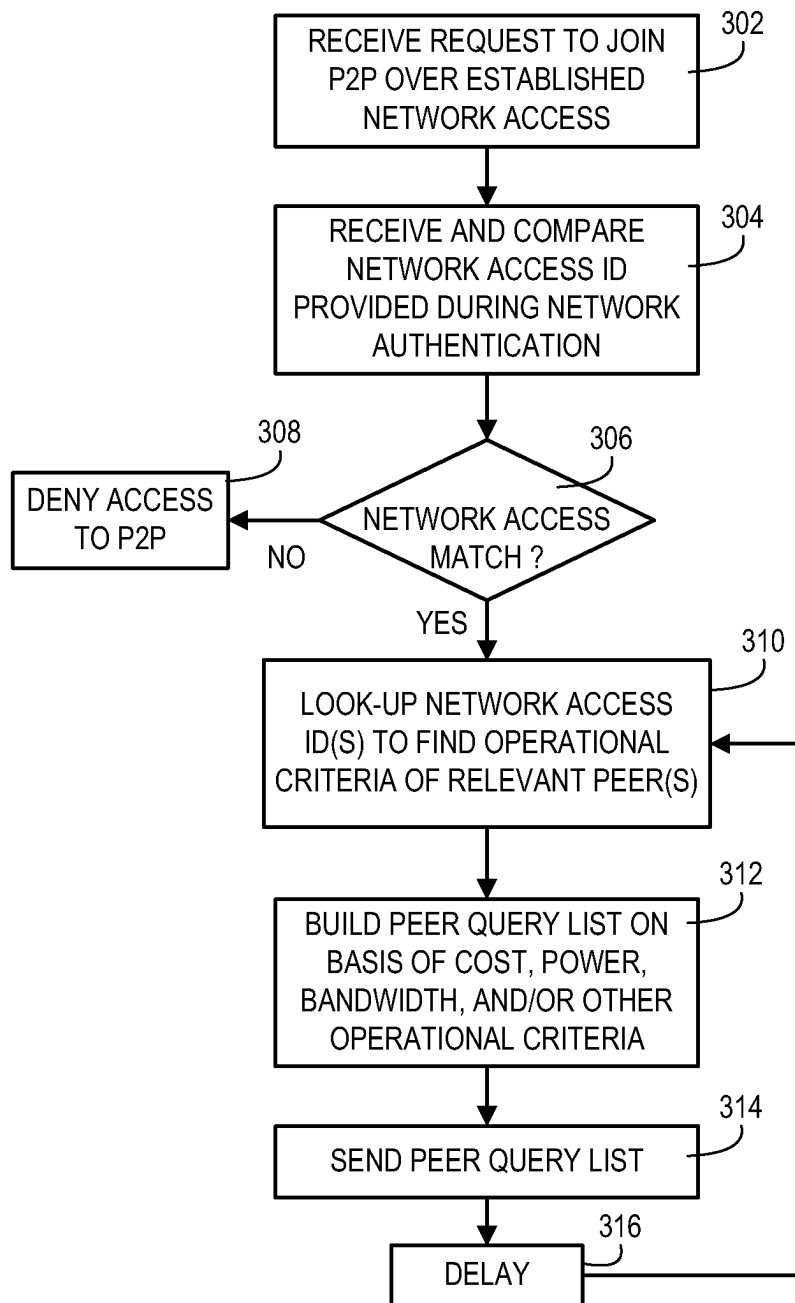


FIG. 3

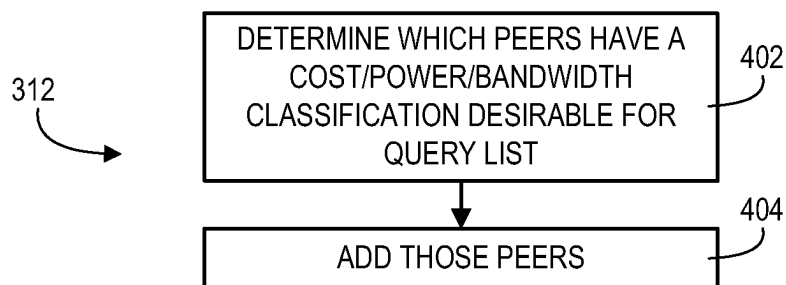


FIG. 4

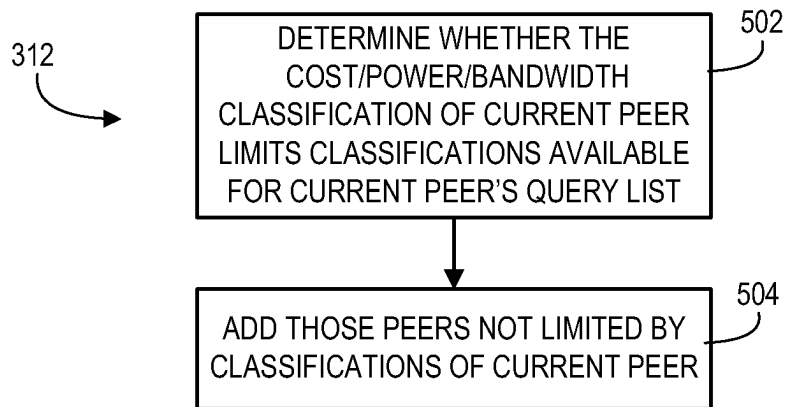


FIG. 5

# Explore Litigation Insights

Docket Alarm provides insights to develop a more informed litigation strategy and the peace of mind of knowing you're on top of things.

## Real-Time Litigation Alerts



Keep your litigation team up-to-date with **real-time alerts** and advanced team management tools built for the enterprise, all while greatly reducing PACER spend.

Our comprehensive service means we can handle Federal, State, and Administrative courts across the country.

## Advanced Docket Research



With over 230 million records, Docket Alarm's cloud-native docket research platform finds what other services can't. Coverage includes Federal, State, plus PTAB, TTAB, ITC and NLRB decisions, all in one place.

Identify arguments that have been successful in the past with full text, pinpoint searching. Link to case law cited within any court document via Fastcase.

## Analytics At Your Fingertips



Learn what happened the last time a particular judge, opposing counsel or company faced cases similar to yours.

Advanced out-of-the-box PTAB and TTAB analytics are always at your fingertips.

## API

Docket Alarm offers a powerful API (application programming interface) to developers that want to integrate case filings into their apps.

## LAW FIRMS

Build custom dashboards for your attorneys and clients with live data direct from the court.

Automate many repetitive legal tasks like conflict checks, document management, and marketing.

## FINANCIAL INSTITUTIONS

Litigation and bankruptcy checks for companies and debtors.

## E-DISCOVERY AND LEGAL VENDORS

Sync your system to PACER to automate legal marketing.