



US009665705B2

(12) **United States Patent**  
**Burke**

(10) **Patent No.:** **US 9,665,705 B2**  
(45) **Date of Patent:** **\*May 30, 2017**

(54) **REMOTE ENTRY SYSTEM**

*63/0861* (2013.01); *H04W 12/08* (2013.01);  
*H04W 84/12* (2013.01); *H04W 84/18*  
(2013.01)

(71) Applicant: **Securicom (NSW) Pty. Ltd.**, Ramsgate,  
NSW (AU)

(58) **Field of Classification Search**

CPC ..... G06F 21/32  
See application file for complete search history.

(72) Inventor: **Christopher John Burke**, Ramsgate  
(AU)

(73) Assignee: **SECURICOM (NSW) PTY LTD**,  
Ramsgate (AU)

(56) **References Cited**

U.S. PATENT DOCUMENTS

5,109,428 A \* 4/1992 Igaki ..... A61B 5/1172  
356/71  
5,933,515 A \* 8/1999 Pu ..... G06K 9/00006  
340/5.53  
7,152,045 B2 \* 12/2006 Hoffman ..... G06F 21/32  
235/379

(\* ) Notice: Subject to any disclaimer, the term of this  
patent is extended or adjusted under 35  
U.S.C. 154(b) by 0 days.  
  
This patent is subject to a terminal dis-  
claimer.

(21) Appl. No.: **15/000,818**

OTHER PUBLICATIONS

(22) Filed: **Jan. 19, 2016**

Klosterman, Andrew J., and Gregory R. Ganger. "Secure continuous  
biometric-enhanced authentication." (2000).\*

(65) **Prior Publication Data**

US 2016/0132672 A1 May 12, 2016

\* cited by examiner

**Related U.S. Application Data**

(63) Continuation of application No. 13/572,166, filed on  
Aug. 10, 2012, now Pat. No. 9,269,208, which is a  
(Continued)

*Primary Examiner* — Shawnoyoy Rahman

(74) *Attorney, Agent, or Firm* — Brinks Gilson & Lione

(30) **Foreign Application Priority Data**

Aug. 13, 2003 (AU) ..... 2003904317

(57) **ABSTRACT**

A system is disclosed for providing secure access to a  
controlled item, the system comprising a database of bio-  
metric signatures, a transmitter subsystem comprising a  
biometric sensor for receiving a biometric signal, means for  
matching the biometric signal against members of the data-  
base of biometric signatures to thereby output an accessi-  
bility attribute, and means for emitting a secure access signal  
conveying information dependent upon said accessibility  
attribute, wherein the secure access signal comprises one of  
at least a rolling code, an encrypted Bluetooth™ protocol,  
and a WiFi™ protocol, and a receiver sub-system compris-  
ing means for receiving the transmitted secure access signal  
and means for providing conditional access to the controlled  
item dependent upon said information.

(51) **Int. Cl.**

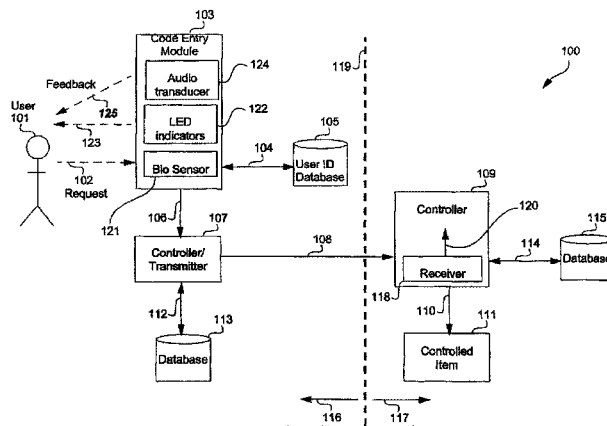
*H04L 29/06* (2006.01)  
*G06F 21/32* (2013.01)  
*G06F 21/35* (2013.01)  
*G07C 9/00* (2006.01)  
*H04W 12/08* (2009.01)

(Continued)

(52) **U.S. Cl.**

CPC ..... *G06F 21/32* (2013.01); *G06F 21/35*  
(2013.01); *G07C 9/00158* (2013.01); *H04L*

**17 Claims, 10 Drawing Sheets**



**Related U.S. Application Data**

continuation of application No. 10/568,207, filed as application No. PCT/AU2004/001083 on Aug. 13, 2004, now Pat. No. 8,266,442.

- (51) **Int. Cl.**  
*H04W 84/12* (2009.01)  
*H04W 84/18* (2009.01)

400

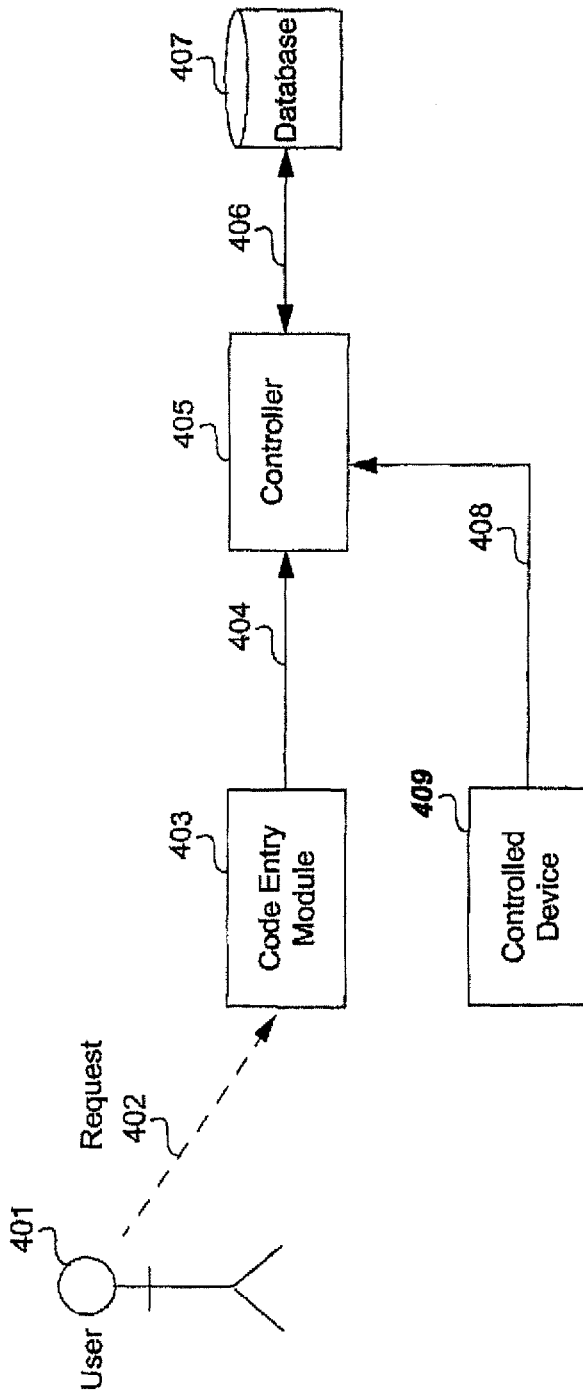


Fig. 1  
(prior art)

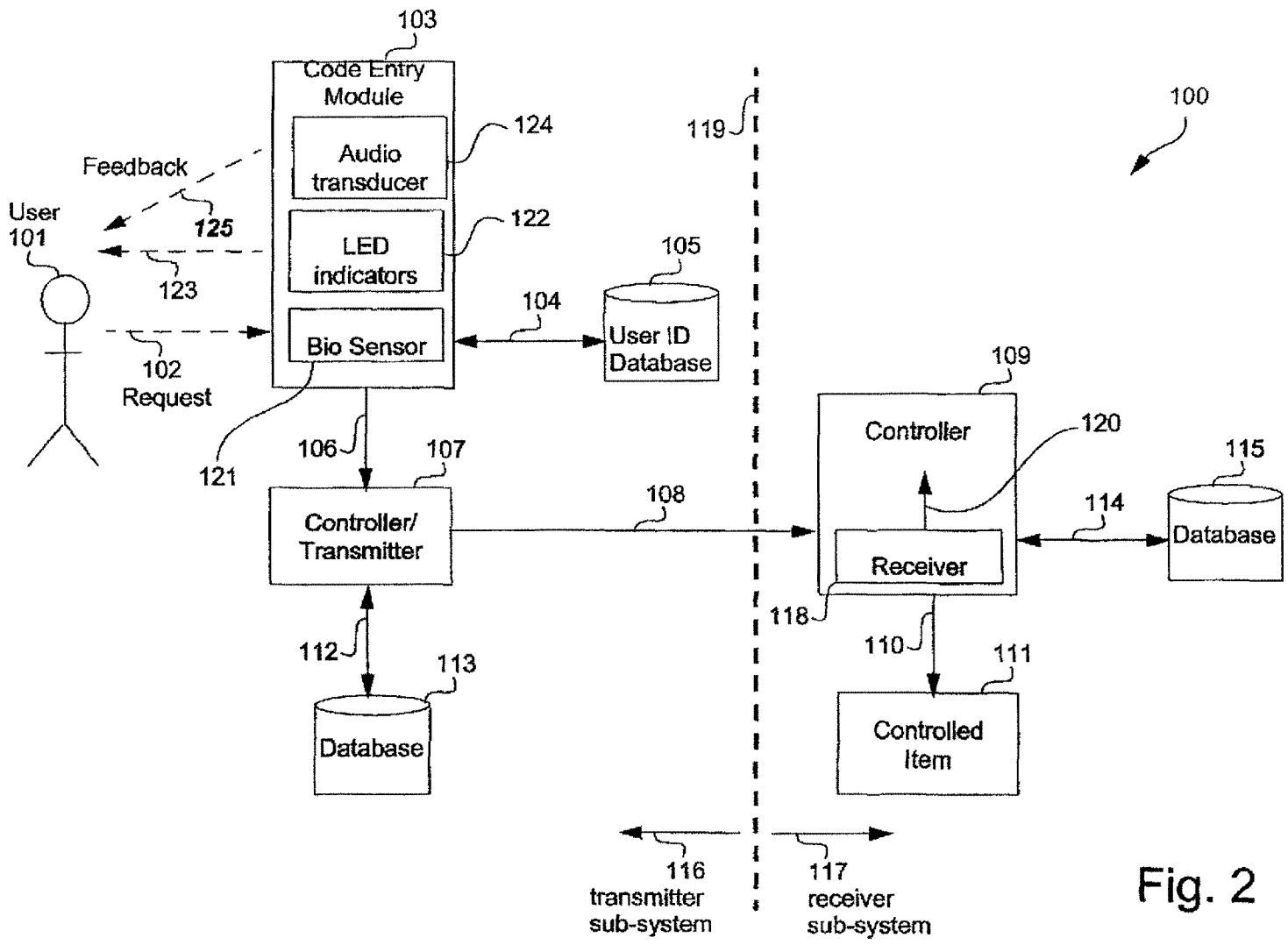


Fig. 2

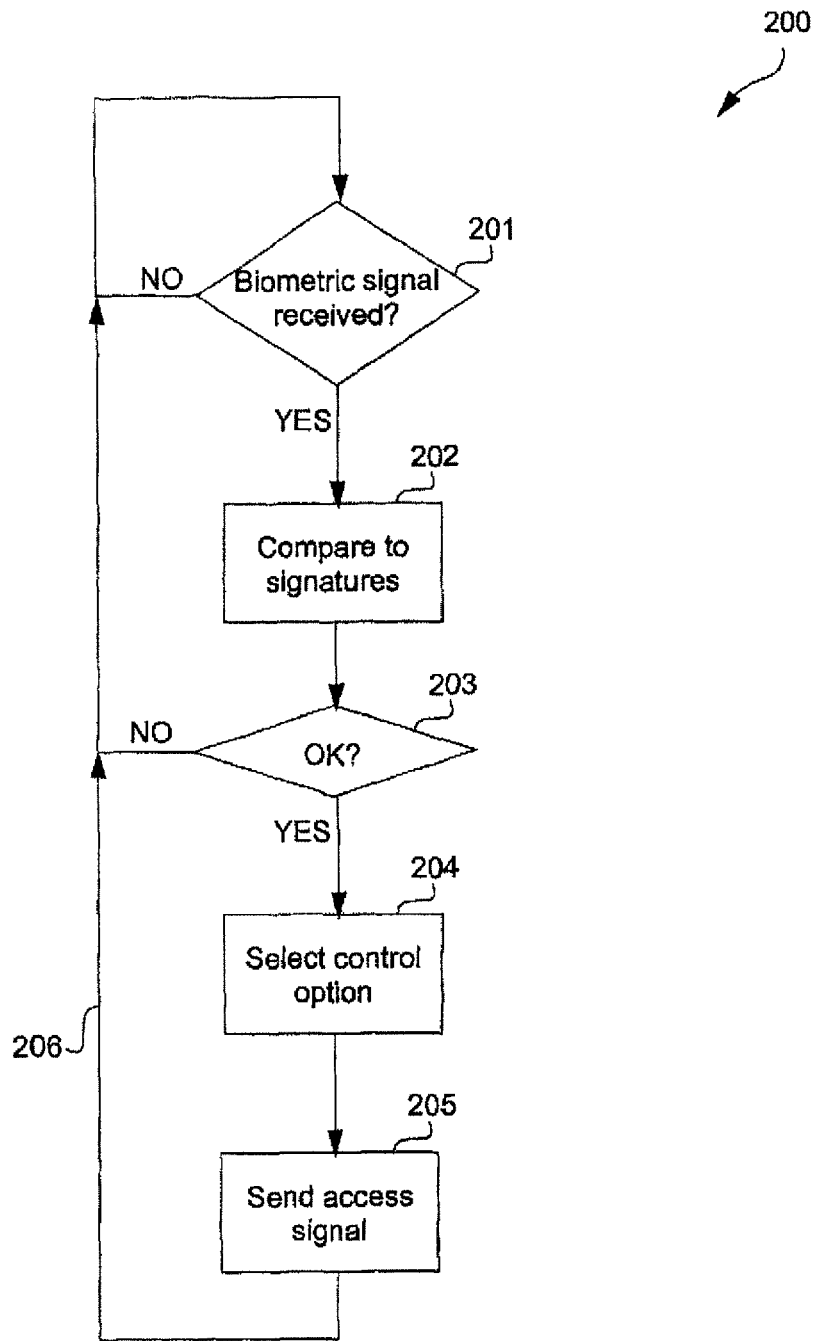


Fig. 3

# Explore Litigation Insights

Docket Alarm provides insights to develop a more informed litigation strategy and the peace of mind of knowing you're on top of things.

## Real-Time Litigation Alerts



Keep your litigation team up-to-date with **real-time alerts** and advanced team management tools built for the enterprise, all while greatly reducing PACER spend.

Our comprehensive service means we can handle Federal, State, and Administrative courts across the country.

## Advanced Docket Research



With over 230 million records, Docket Alarm's cloud-native docket research platform finds what other services can't. Coverage includes Federal, State, plus PTAB, TTAB, ITC and NLRB decisions, all in one place.

Identify arguments that have been successful in the past with full text, pinpoint searching. Link to case law cited within any court document via Fastcase.

## Analytics At Your Fingertips



Learn what happened the last time a particular judge, opposing counsel or company faced cases similar to yours.

Advanced out-of-the-box PTAB and TTAB analytics are always at your fingertips.

## API

Docket Alarm offers a powerful API (application programming interface) to developers that want to integrate case filings into their apps.

## LAW FIRMS

Build custom dashboards for your attorneys and clients with live data direct from the court.

Automate many repetitive legal tasks like conflict checks, document management, and marketing.

## FINANCIAL INSTITUTIONS

Litigation and bankruptcy checks for companies and debtors.

## E-DISCOVERY AND LEGAL VENDORS

Sync your system to PACER to automate legal marketing.