



US009269208B2

(12) **United States Patent**
Burke

(10) **Patent No.:** **US 9,269,208 B2**
(45) **Date of Patent:** ***Feb. 23, 2016**

(54) **REMOTE ENTRY SYSTEM**

USPC 713/186
See application file for complete search history.

(75) Inventor: **Christopher John Burke**, Ramsgate (AU)

(56) **References Cited**

(73) Assignee: **SECURICOM (NSW) PTY LTD**, Ramsgate (AU)

U.S. PATENT DOCUMENTS

(*) Notice: Subject to any disclaimer, the term of this patent is extended or adjusted under 35 U.S.C. 154(b) by 78 days.

5,109,428 A * 4/1992 Igaki et al. 382/125
5,933,515 A * 8/1999 Pu G06K 9/00006
340/5.53

This patent is subject to a terminal disclaimer.

(Continued)

FOREIGN PATENT DOCUMENTS

(21) Appl. No.: **13/572,166**

WO WO 0212660 A1 * 2/2002
WO WO 02/095589 A1 11/2002

(22) Filed: **Aug. 10, 2012**

OTHER PUBLICATIONS

(65) **Prior Publication Data**

Notice of Acceptance dated Sep. 18, 2012 for co-pending Australian Patent Office Application No. 2009201293 (3 pp.).

US 2012/0311343 A1 Dec. 6, 2012

(Continued)

Related U.S. Application Data

(63) Continuation of application No. 10/568,207, filed as application No. PCT/AU2004/001083 on Aug. 13, 2004, now Pat. No. 8,266,442.

Primary Examiner — Mohammad L Rahman

(74) *Attorney, Agent, or Firm* — Brinks Gilson & Lione

(30) **Foreign Application Priority Data**

Aug. 13, 2003 (AU) 2003904317

(57) **ABSTRACT**

A system is disclosed for providing secure access to a controlled item, the system comprising a database of biometric signatures, a transmitter subsystem comprising a biometric sensor for receiving a biometric signal, means for matching the biometric signal against members of the database of biometric signatures to thereby output an accessibility attribute, and means for emitting a secure access signal conveying information dependent upon said accessibility attribute, wherein the secure access signal comprises one of at least a rolling code, an encrypted Bluetooth™ protocol, and a WiFi™ protocol, and a receiver sub-system comprising means for receiving the transmitted secure access signal and means for providing conditional access to the controlled item dependent upon said information.

(51) **Int. Cl.**

H04L 29/06 (2006.01)
G07C 9/00 (2006.01)

(Continued)

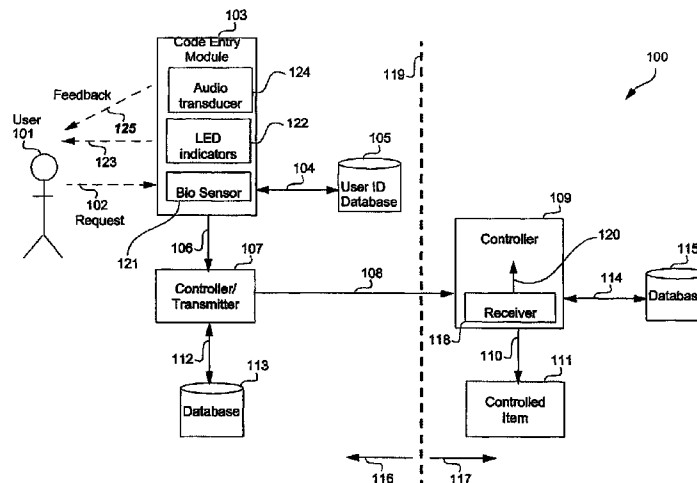
(52) **U.S. Cl.**

CPC **G07C 9/00158** (2013.01); **G06F 21/32** (2013.01); **G06F 21/35** (2013.01); **H04L 63/0861** (2013.01); **H04W 12/08** (2013.01); **H04W 84/12** (2013.01); **H04W 84/18** (2013.01)

(58) **Field of Classification Search**

CPC H04L 63/0861; G06F 21/32

13 Claims, 10 Drawing Sheets



| | | | | | | | | |
|------|-------------------|-----------|--|--------------|------|---------|-------------------|-------------------------|
| (51) | Int. Cl. | | | | | | | |
| | G06F 21/32 | (2013.01) | | 7,152,045 | B2 * | 12/2006 | Hoffman | 705/43 |
| | G06F 21/35 | (2013.01) | | 7,174,017 | B2 * | 2/2007 | Bantz et al. | 380/255 |
| | H04W 12/08 | (2009.01) | | 2002/0038818 | A1 | 4/2002 | Zingher et al. | |
| | H04W 84/12 | (2009.01) | | 2003/0126439 | A1 | 7/2003 | Wheeler et al. | |
| | H04W 84/18 | (2009.01) | | 2004/0042642 | A1 * | 3/2004 | Bolle | G07C 9/00134 382/115 |

OTHER PUBLICATIONS

(56) **References Cited**
 U.S. PATENT DOCUMENTS

| | | | | |
|-----------|------|--------|------------------|----------|
| 6,195,447 | B1 * | 2/2001 | Ross | 382/125 |
| 6,229,906 | B1 * | 5/2001 | Pu et al. | 382/116 |
| 6,992,562 | B2 * | 1/2006 | Fuks et al. | 340/5.52 |

Extended European Search Report for corresponding EP application No. 14188004 dated Apr. 22, 2015.
 Office Action for corresponding Canadian application No. 2,535,434 dated Mar. 27, 2015.

* cited by examiner

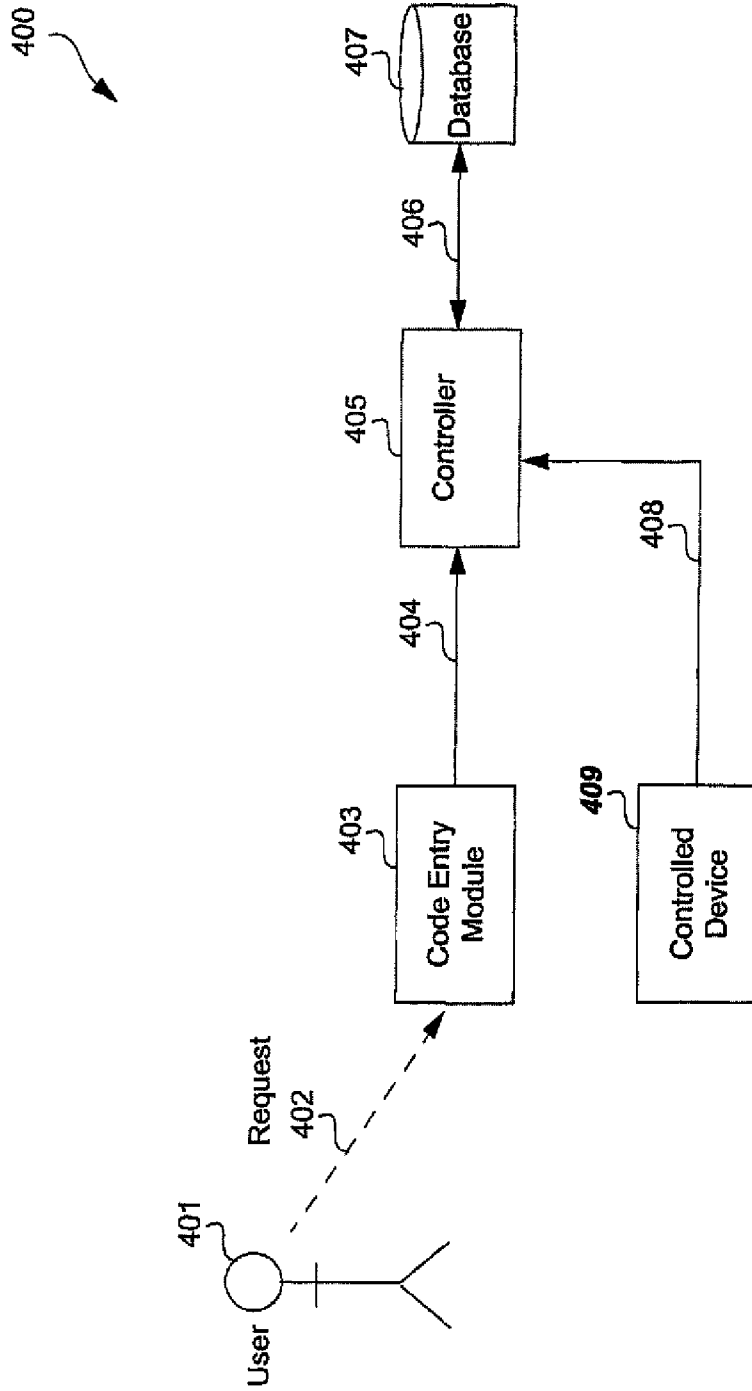
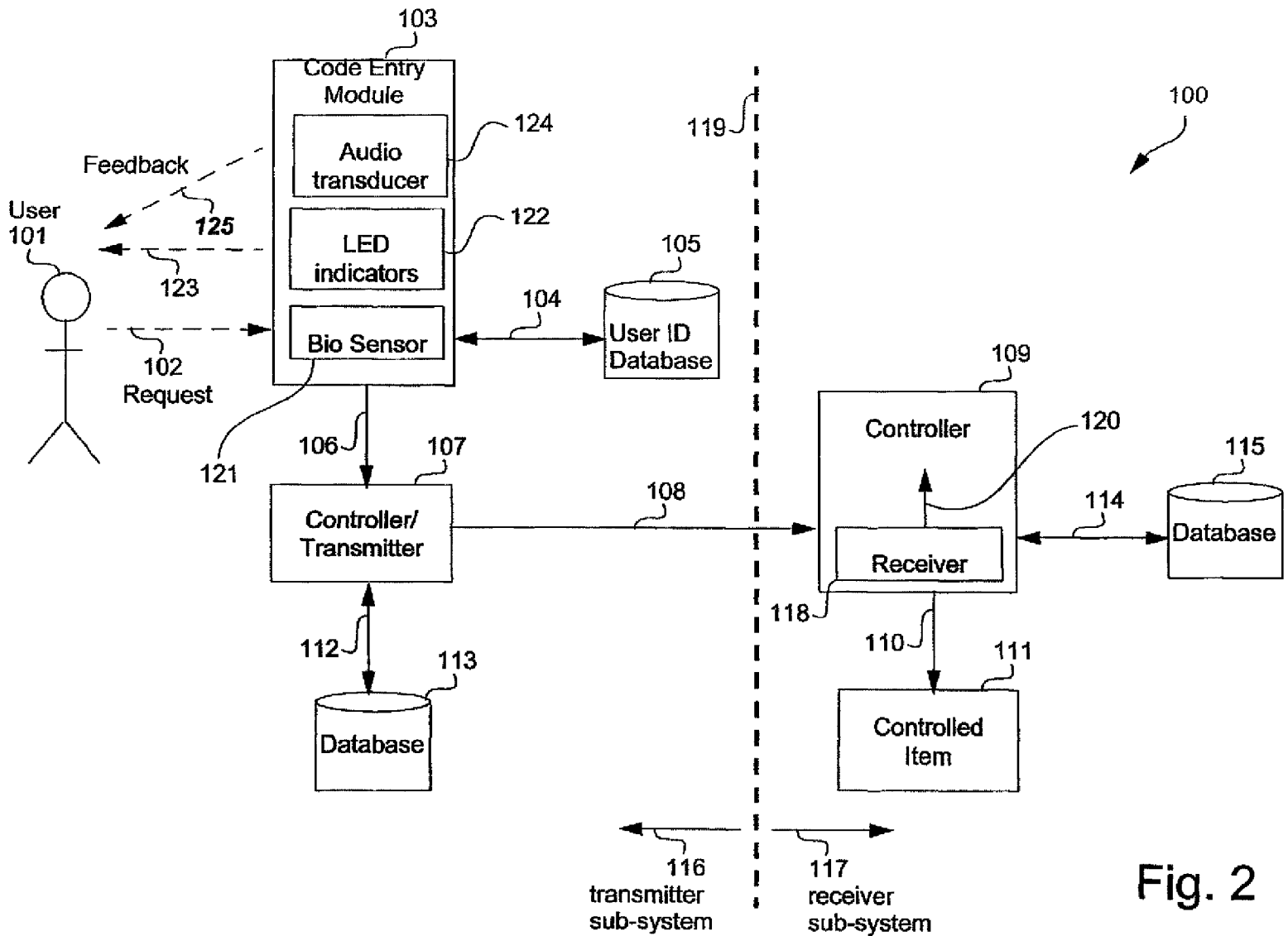


Fig. 1
(prior art)



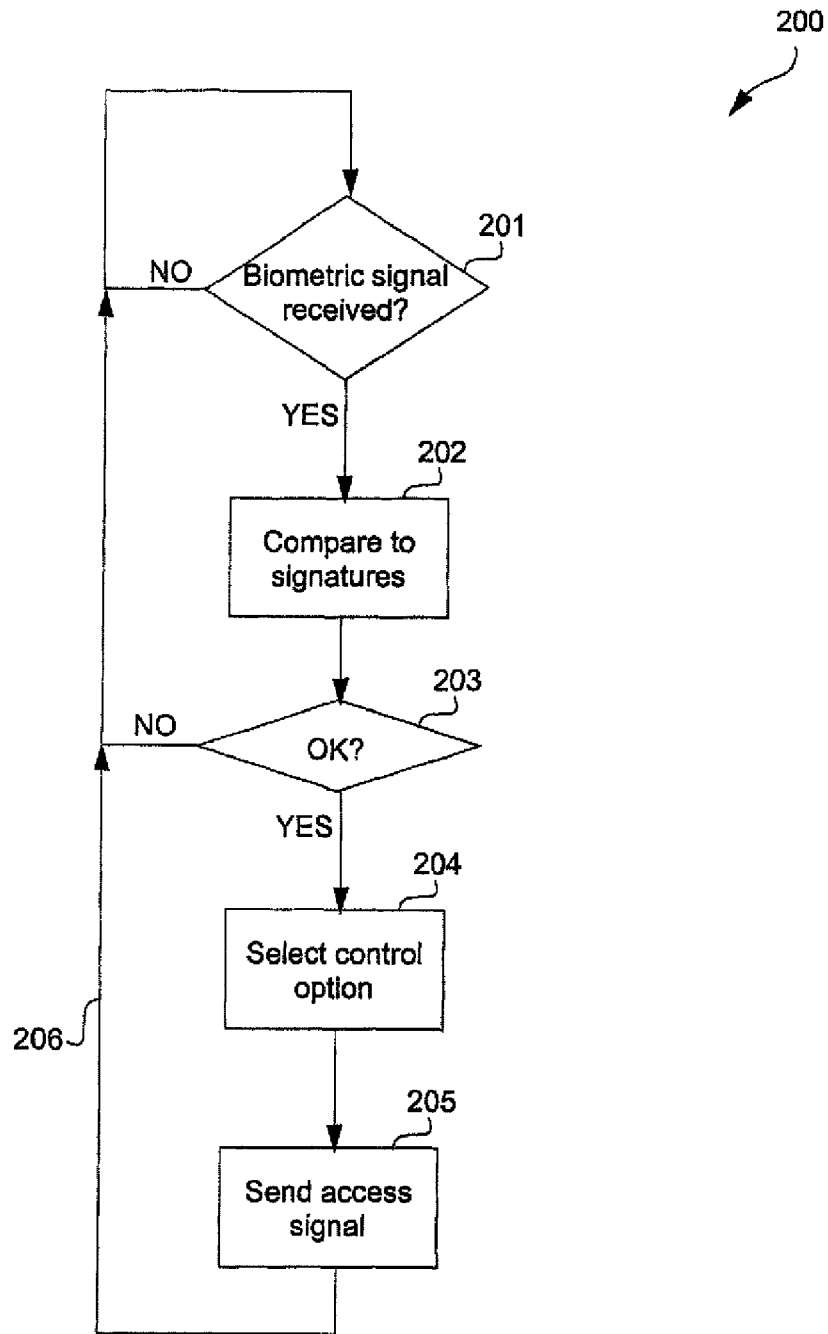


Fig. 3

Explore Litigation Insights

Docket Alarm provides insights to develop a more informed litigation strategy and the peace of mind of knowing you're on top of things.

Real-Time Litigation Alerts



Keep your litigation team up-to-date with **real-time alerts** and advanced team management tools built for the enterprise, all while greatly reducing PACER spend.

Our comprehensive service means we can handle Federal, State, and Administrative courts across the country.

Advanced Docket Research



With over 230 million records, Docket Alarm's cloud-native docket research platform finds what other services can't. Coverage includes Federal, State, plus PTAB, TTAB, ITC and NLRB decisions, all in one place.

Identify arguments that have been successful in the past with full text, pinpoint searching. Link to case law cited within any court document via Fastcase.

Analytics At Your Fingertips



Learn what happened the last time a particular judge, opposing counsel or company faced cases similar to yours.

Advanced out-of-the-box PTAB and TTAB analytics are always at your fingertips.

API

Docket Alarm offers a powerful API (application programming interface) to developers that want to integrate case filings into their apps.

LAW FIRMS

Build custom dashboards for your attorneys and clients with live data direct from the court.

Automate many repetitive legal tasks like conflict checks, document management, and marketing.

FINANCIAL INSTITUTIONS

Litigation and bankruptcy checks for companies and debtors.

E-DISCOVERY AND LEGAL VENDORS

Sync your system to PACER to automate legal marketing.