

LMC6953 PCI Local Bus Power Supervisor

General Description

The LMC6953 is a voltage supervisory chip designed to meet PCI (Peripheral Component Interconnect) Specifications Revision 2.1. It monitors 5V and 3.3V power supplies. In cases of power-up, power-down, brown-out, power failure and manual reset interrupt, the LMC6953 provides an active low reset. $\overline{\text{RESET}}$ holds low for 100 ms after both 5V and 3.3V powers recover, or after manual reset signal returns to high state. The external capacitor on pin 8 adjusts the reset delay.

This part is ideal on PCI motherboards or add-in cards to ensure the integrity of the entire system when there is a fault condition. The active low reset sets the microprocessor or local device in a known state.

The LMC6953 has a built-in bandgap reference that accurately determines all the threshold voltages. The internal reset delay circuitry eliminates additional discrete components.

Features

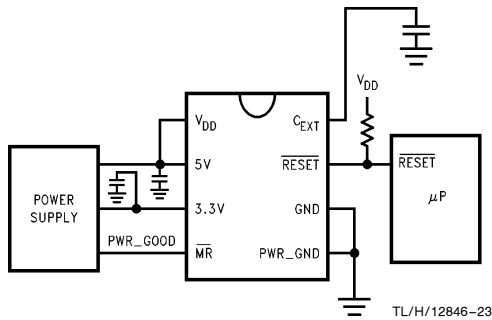
- Compliant to PCI specifications revision 2.1.
- Under and over voltage detectors for 5V and 3.3V
- Power failure detection (5V falling under 3.3V by 300 mV max)
- Manual reset input pin
- Guaranteed $\overline{\text{RESET}}$ assertion at $V_{\text{DD}} = 1.5\text{V}$
- Integrated reset delay circuitry
- Open drain output
- Adjustable reset delay
- Response time for over and under voltage detection 490 ns Max
- Power failure response time 90 ns Max
- Requires minimal external components

Applications

- Desktop PCs
- PCI-Based Systems
- Network servers

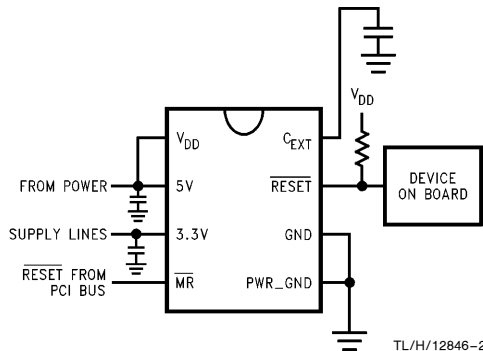
Typical Application Circuits

On Mother Board



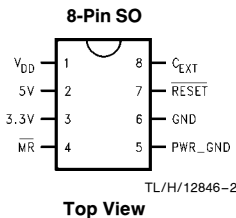
TL/H/12846-23

On Add-in Cards



TL/H/12846-24

Connection Diagram



TL/H/12846-2

Ordering Information

Package	Commercial Temp Range 0°C to +70°C	NSC Drawing	Supplied As
8-Pin Small Outline	LMC6953CM	M08A	Rails
	LMC6953CMX		2.5k Tape and Reel

Absolute Maximum Ratings (Note 1)

If Military/Aerospace specified devices are required, please contact the National Semiconductor Sales Office/Distributors for availability and specifications.

ESD Tolerance (Note 2)	
Human Body Model	2 kV
Machine Model	200V
Voltage at Input Pin	7V
Supply Voltage	7V
Current at Output Pin	15 mA
Current at Power Supply Pin (Note 3)	10 mA

Lead Temp. (Soldering, 10 sec.)	260°C
Storage Temperature Range	-65°C to +150°C
Junction Temperature	150°C

Operating Ratings (Note 1)

Supply Voltage	1.5V to 6V
Junction Temperature Range	0°C ≤ T _J ≤ 70°C
LMC6953C	
Thermal Resistance (θ _{JA})	
M Package	165°C/W

DC Electrical Characteristics

Unless otherwise specified, all **boldface** limits guaranteed for T_J = 0°C to 70°C, V_{DD} = 5V, R_{PULL-UP} = 4.7 kΩ and C_{EXT} = 0.01 μF. Typical numbers are room temperature (25°C) performance.

Symbol	Parameter	Conditions	Min	Typ	Max	Units
V _{H5}	V _{DD} Over-Voltage Threshold	(Note 4)	5.45	5.6	5.75	V
V _{L5}	V _{DD} Under-Voltage Threshold	(Note 4)	4.25	4.4	4.55	V
V _{H3.3}	3.3V Over-Voltage Threshold	(Note 5)	3.8	3.95	4.1	V
V _{L3.3}	3.3V Under-Voltage Threshold	(Note 5)	2.5	2.65	2.8	V
V _{MR}	Manual RESET Threshold			2.5	2.8	V
V _{PF}	Power Failure Differential Voltage (3.3V Pin-5V Pin)	(Note 6)		150	300	mV
R _{IN}	Input Resistance at 5V and 3.3V Pins			35		kΩ
V _{OL}	RESET Output Low	V _{DD} = 1.5V to 6V		0.05	0.1	V
I _S	Supply Current	(Note 3)		0.8	1.5	mA

AC Electrical Characteristics

Unless otherwise specified, all **boldface** limits guaranteed for T_J = 0°C to 70°C, V_{DD} = 5V, R_{PULL-UP} = 4.7 kΩ and C_{EXT} = 0.01 μF. Typical numbers are room temperature (25°C) performance.

Symbol	Parameter	Conditions	Typ	LMC6953 Limit	Units
t _D	Over or Under Voltage Response Time	(Note 7)	150	490	ns max
t _{PF}	Power Failure Response Time	(Note 8)	40	90	ns max
t _{RESET}	Reset Delay	C _{EXT} = 0.01 μF	100		ms

Note 1: Absolute Maximum Ratings indicate limits beyond which damage to the device may occur. Operating Ratings indicate conditions for which the device is intended to be functional, but specific performance is not guaranteed. For guaranteed specifications and the test conditions, see the Electrical Characteristics.

Note 2: Human body model, 1.5 kΩ in series with 100 pF. Machine model, 200Ω in series with 100 pF.

Note 3: Supply current measured at pins 1, 2, and 3. The 4.7 kΩ pull-up resistor on pin 7 is not tied to V_{DD} in this measurement.

Note 4: PCI Specifications Revision 2.1, Section 4.2.1.1 and Section 4.3.2.

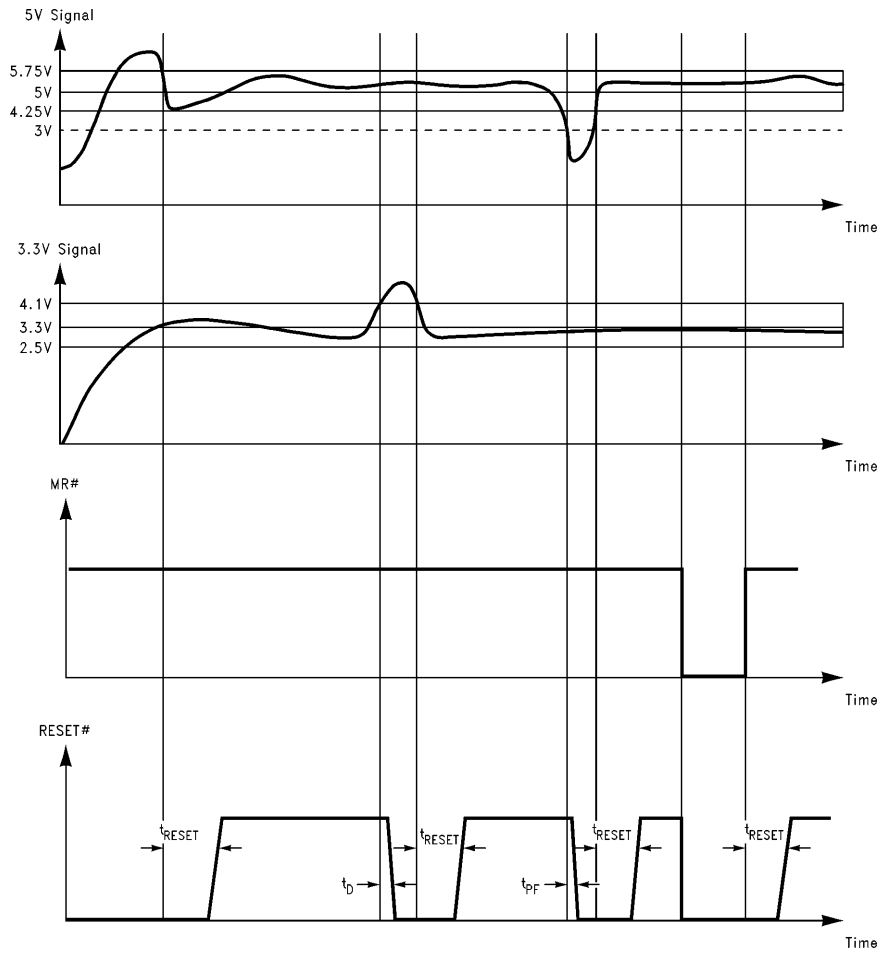
Note 5: PCI Specifications Revision 2.1, Section 4.2.2.1 and Section 4.3.2.

Note 6: PCI Specifications Revision 2.1 and Section 4.3.2.

Note 7: PCI Specifications Revision 2.1, Section 4.3.2. The response time is measured individually with ±750 mV of overdrive applied to pin 2 then ±600 mV of overdrive applied to pin 3 and taking the worst number of the four measurements.

Note 8: PCI Specifications Revision 2.1, Section 4.3.2. The power failure response time is measured with a signal changing from 5V to 3V applied to pin 2 and a 3.3V DC applied to pin 3.

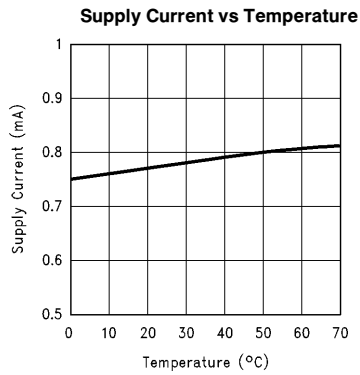
LMC6953 Timing Diagram



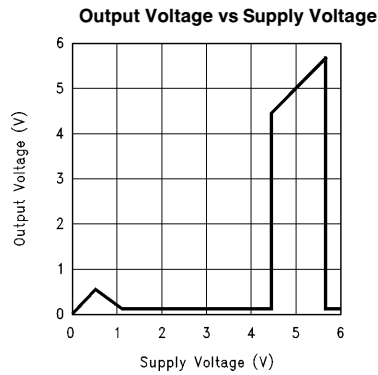
Note: t_{RESET} , t_D and t_{PF} are not to scale.

TL/H/12846-3

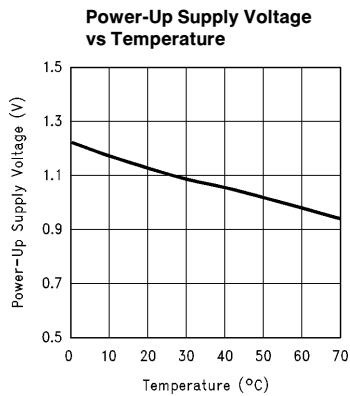
Typical Performance Characteristics Unless otherwise specified, $T_A = 25^\circ\text{C}$



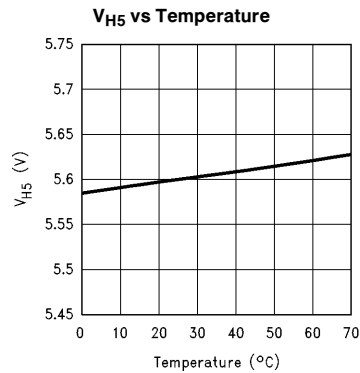
TL/H/12846-4



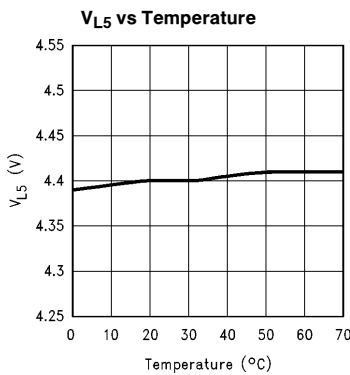
TL/H/12846-12



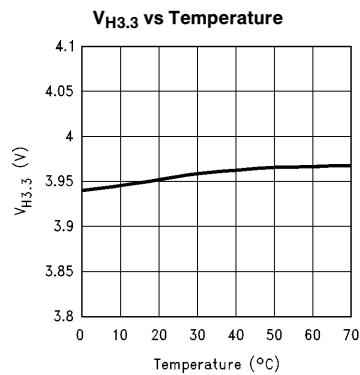
TL/H/12846-9



TL/H/12846-5

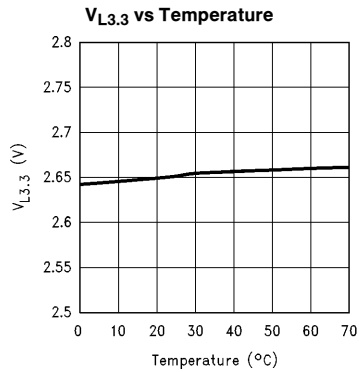


TL/H/12846-6

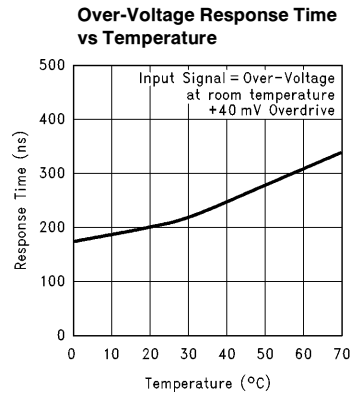


TL/H/12846-7

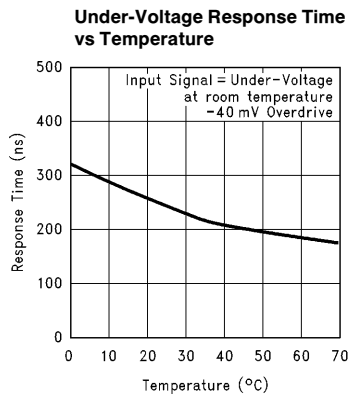
Typical Performance Characteristics Unless otherwise specified, $T_A = 25^\circ\text{C}$ (Continued)



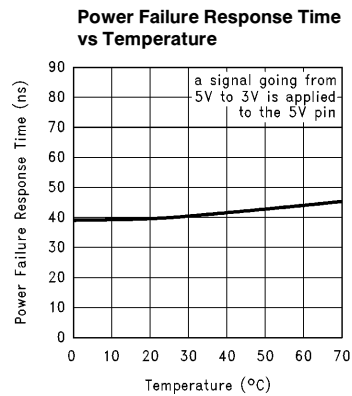
TL/H/12846-8



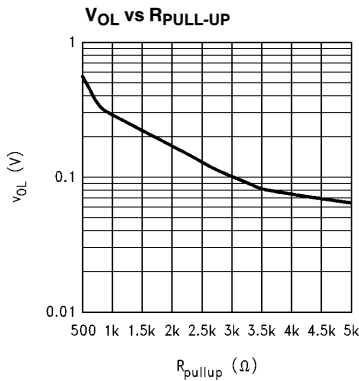
TL/H/12846-13



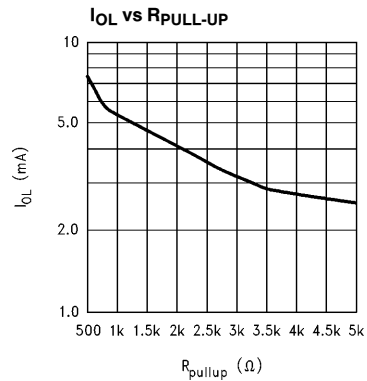
TL/H/12846-14



TL/H/12846-15



TL/H/12846-19



TL/H/12846-20

Explore Litigation Insights

Docket Alarm provides insights to develop a more informed litigation strategy and the peace of mind of knowing you're on top of things.

Real-Time Litigation Alerts



Keep your litigation team up-to-date with **real-time alerts** and advanced team management tools built for the enterprise, all while greatly reducing PACER spend.

Our comprehensive service means we can handle Federal, State, and Administrative courts across the country.

Advanced Docket Research



With over 230 million records, Docket Alarm's cloud-native docket research platform finds what other services can't. Coverage includes Federal, State, plus PTAB, TTAB, ITC and NLRB decisions, all in one place.

Identify arguments that have been successful in the past with full text, pinpoint searching. Link to case law cited within any court document via Fastcase.

Analytics At Your Fingertips



Learn what happened the last time a particular judge, opposing counsel or company faced cases similar to yours.

Advanced out-of-the-box PTAB and TTAB analytics are always at your fingertips.

API

Docket Alarm offers a powerful API (application programming interface) to developers that want to integrate case filings into their apps.

LAW FIRMS

Build custom dashboards for your attorneys and clients with live data direct from the court.

Automate many repetitive legal tasks like conflict checks, document management, and marketing.

FINANCIAL INSTITUTIONS

Litigation and bankruptcy checks for companies and debtors.

E-DISCOVERY AND LEGAL VENDORS

Sync your system to PACER to automate legal marketing.