



- [54] PACKAGE FOR AN INFRARED COMMUNICATIONS ADAPTER
- [75] Inventors: **Karen Elizabeth Benjamin; Jeffrey Byron McClinton; Robert Neil Whiteman, Jr.; Earl Chester Myers, Jr.; John Joseph Consoli**, all of Harrisburg, Pa.
- [73] Assignee: **The Whitaker Corporation**, Wilmington, Del.
- [21] Appl. No.: **453,729**
- [22] Filed: **May 30, 1995**
- [51] Int. Cl.⁶ **H04B 10/00**
- [52] U.S. Cl. **359/152; 361/752**
- [58] Field of Search 359/152, 159, 359/162, 163; 385/88, 90, 92, 93; 361/752, 756, 785, 796, 802; 345/156, 163, 169, 905; 463/36, 37, 38, 39; 273/148 H

5,359,492	10/1994	Porter	361/683
5,373,149	12/1994	Rasmussen	235/492
5,416,872	5/1995	Sizer, II et al.	385/88
5,466,174	11/1995	Savage et al.	439/596
5,470,252	11/1995	Fladung	439/490
5,506,921	4/1996	Horie	385/88
5,555,161	9/1996	Roe et al.	362/32
5,567,175	10/1996	Warden et al.	439/490

OTHER PUBLICATIONS

Photolink: Newest addition to wireless LAN arena, computer reseller news. Jul. 31, 1989.
Gimmick or Breakthrough, Wireless and rechargeable mouse Apr. 2, 1992 DAK industries.

Primary Examiner—Wellington Chin
Assistant Examiner—Rafael Bacares
Attorney, Agent, or Firm—Anton P. Ness

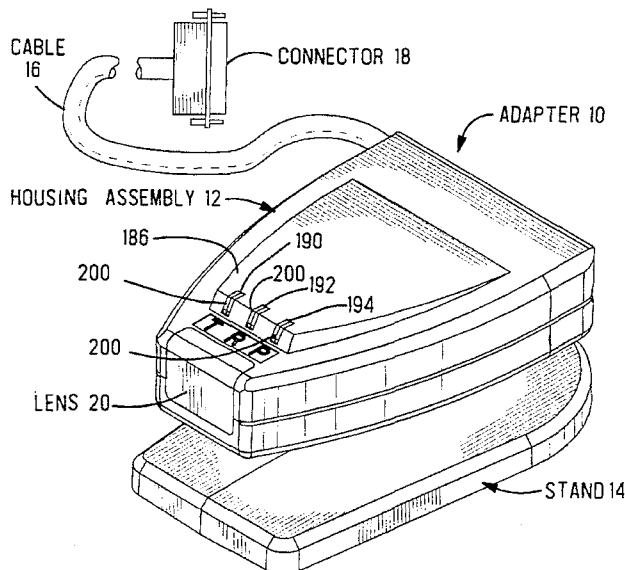
[57] ABSTRACT

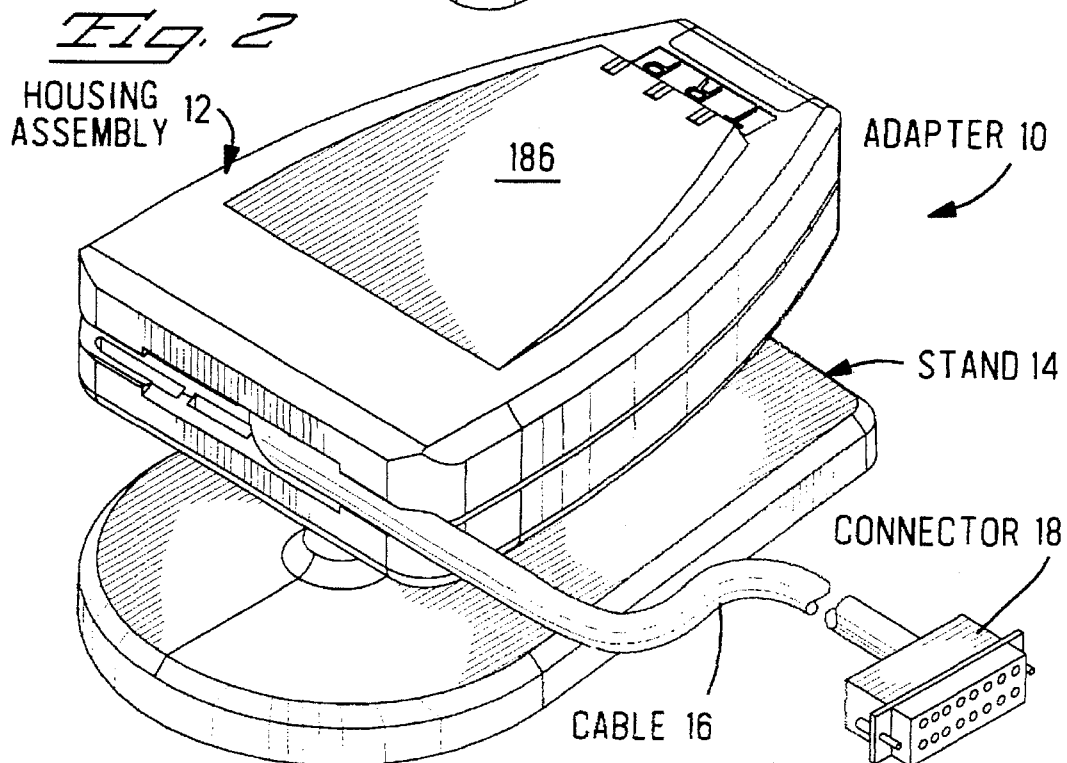
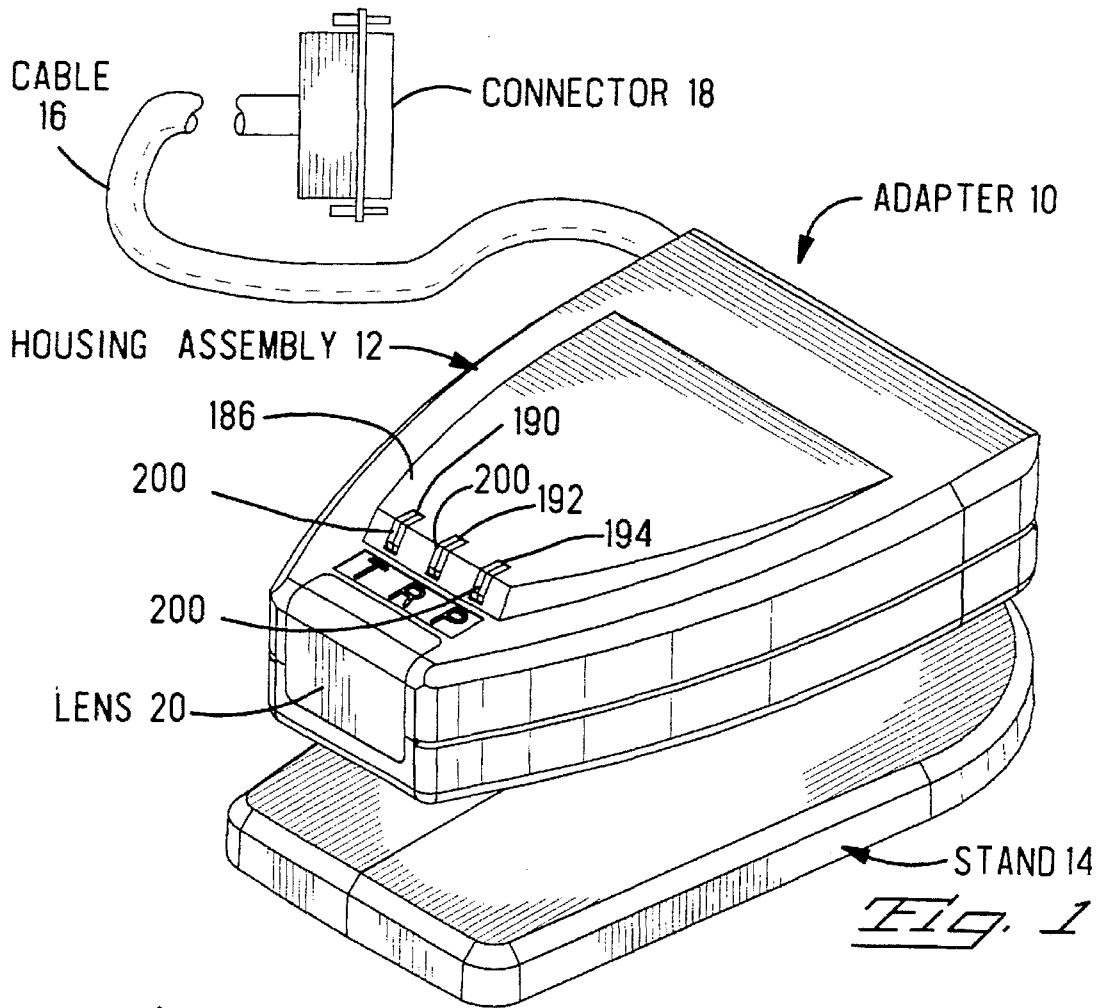
An infrared communications adapter (10) is provided having a two part housing (22, 24) that snaps together to form a housing assembly (12) having an interior cavity (30). The interior cavity contains a circuit board (32) having communications circuitry and components thereon, including light emitting diodes (42, 44, 46) for indicating operating status of the unit and a photodiode array (34) for receiving and transmitting infrared signals. The adapter (10) includes a light pipe (50) having three light conducting channels (204, 206, 208) that conduct light from the three light emitting diodes (42, 44, 46) to viewing facets (190, 192, 194) on the light pipe that extend through openings in the housing (12). A lens (20) is arranged in a front end of the housing directly in front of the photodiode array (34). An articulated coupling (60) removably couples a stand (14) to the housing assembly (12) and permits aiming of the unit for receiving and transmitting the infrared signals. A cable (16) is terminated at one end to the circuitry on the circuit board (32) and at the other end to a connector (18) that is connected to an input/output data port of a computer or other equipment.

33 Claims, 10 Drawing Sheets

[56] References Cited
U.S. PATENT DOCUMENTS

4,069,403	1/1978	Beaudette et al.	200/51.12
4,404,522	9/1983	Pucciarello	324/114
4,431,966	2/1984	Pucciarello	324/114
4,789,224	12/1988	Bougsty	350/345
4,809,257	2/1989	Gantenbein et al.	370/4
4,978,317	12/1990	Pocrass	439/490
5,109,453	4/1992	Edwards et al.	385/90
5,109,454	4/1992	Okuno te al.	385/92
5,142,538	8/1992	Fickes et al.	371/34
5,146,620	9/1992	Swikle et al.	455/351
5,181,181	1/1993	Glynn	345/163
5,191,461	3/1993	Cranshaw et al.	359/154
5,276,279	1/1994	Brownlie et al.	174/65 R
5,289,345	2/1994	Corradetti et al.	361/752
5,327,328	7/1994	Simms et al.	362/26
5,329,428	7/1994	Block et al.	361/785
5,339,178	8/1994	Phelps, III et al.	359/42
5,349,504	9/1994	Simms et al.	362/32





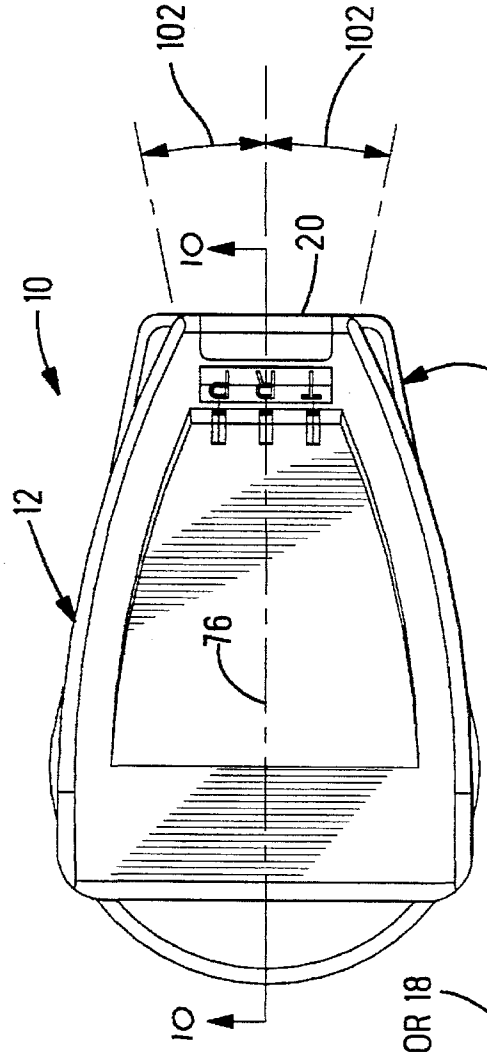


FIG. 2

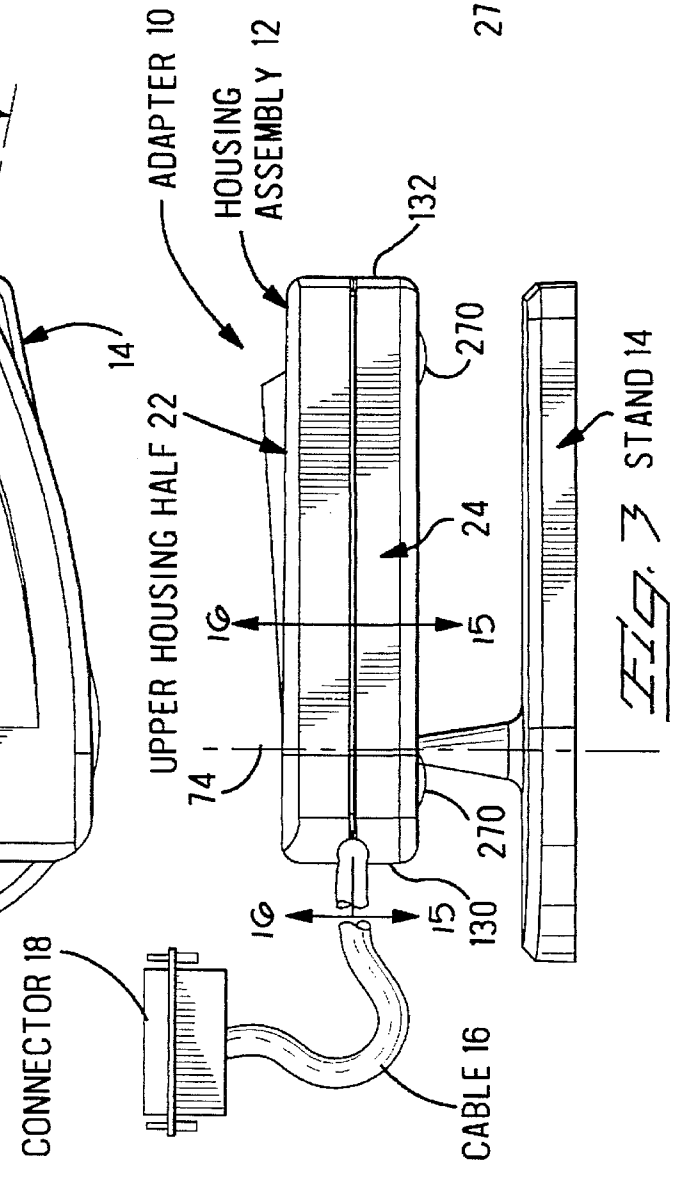
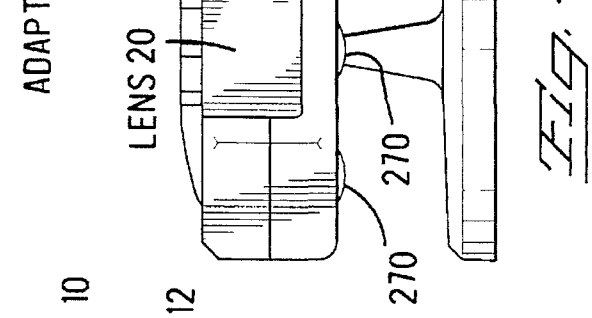


FIG. 3



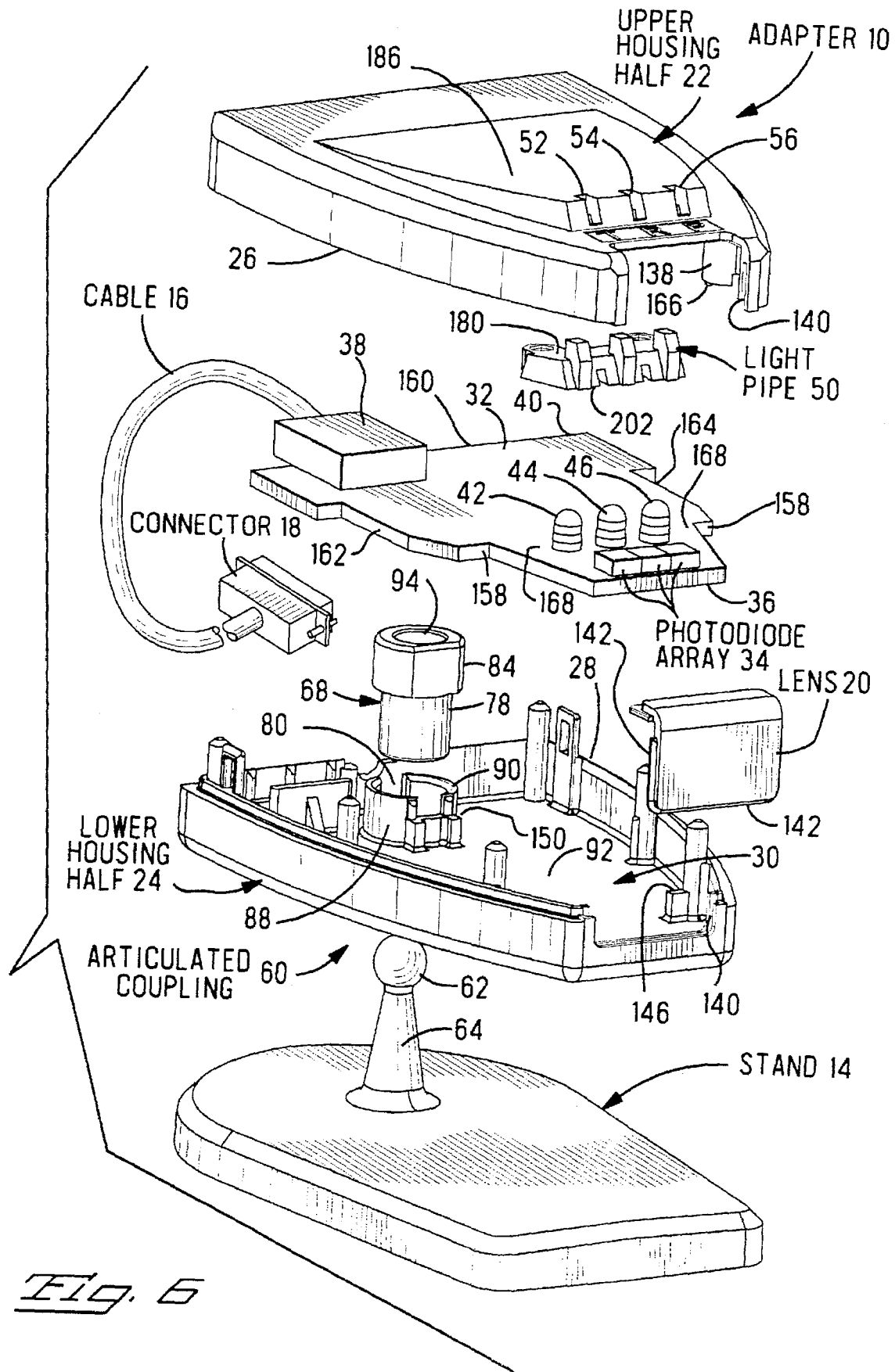


Fig. 6

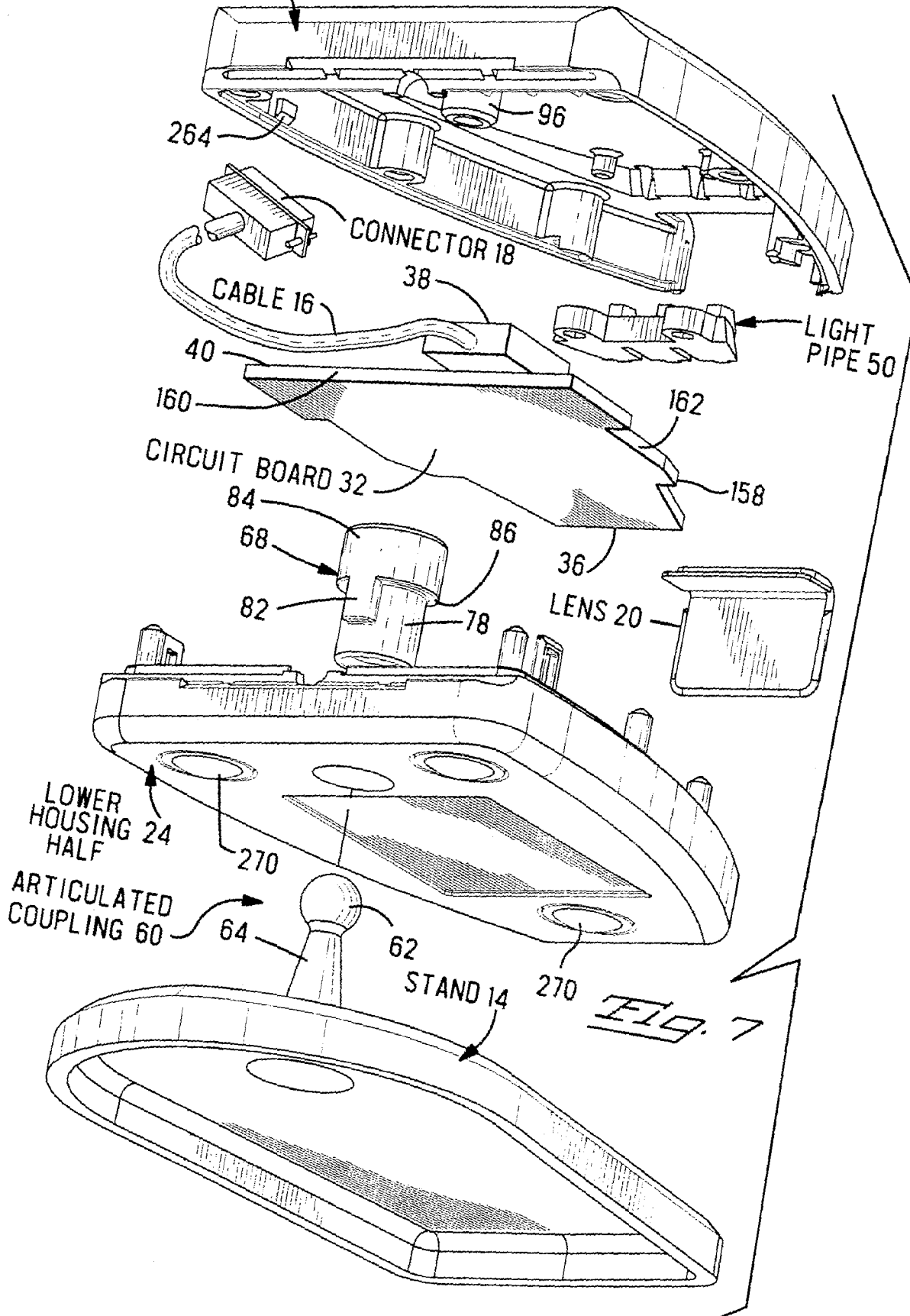


FIG. 7

Explore Litigation Insights

Docket Alarm provides insights to develop a more informed litigation strategy and the peace of mind of knowing you're on top of things.

Real-Time Litigation Alerts



Keep your litigation team up-to-date with **real-time alerts** and advanced team management tools built for the enterprise, all while greatly reducing PACER spend.

Our comprehensive service means we can handle Federal, State, and Administrative courts across the country.

Advanced Docket Research



With over 230 million records, Docket Alarm's cloud-native docket research platform finds what other services can't. Coverage includes Federal, State, plus PTAB, TTAB, ITC and NLRB decisions, all in one place.

Identify arguments that have been successful in the past with full text, pinpoint searching. Link to case law cited within any court document via Fastcase.

Analytics At Your Fingertips



Learn what happened the last time a particular judge, opposing counsel or company faced cases similar to yours.

Advanced out-of-the-box PTAB and TTAB analytics are always at your fingertips.

API

Docket Alarm offers a powerful API (application programming interface) to developers that want to integrate case filings into their apps.

LAW FIRMS

Build custom dashboards for your attorneys and clients with live data direct from the court.

Automate many repetitive legal tasks like conflict checks, document management, and marketing.

FINANCIAL INSTITUTIONS

Litigation and bankruptcy checks for companies and debtors.

E-DISCOVERY AND LEGAL VENDORS

Sync your system to PACER to automate legal marketing.