



US007232073B1

(12) **United States Patent
de Jong**

(10) **Patent No.: US 7,232,073 B1**
(45) **Date of Patent: Jun. 19, 2007**

- (54) **SMART CARD WITH MULTIPLE APPLICATIONS**
- (75) Inventor: **Eduard de Jong**, Dyfed (GB)
- (73) Assignee: **Sun Microsystems, Inc.**, Santa Clara, CA (US)
- (*) Notice: Subject to any disclaimer, the term of this patent is extended or adjusted under 35 U.S.C. 154(b) by 380 days.
- (21) Appl. No.: **11/019,833**
- (22) Filed: **Dec. 21, 2004**

2003/0078866	A1	4/2003	Richards et al.	705/35
2003/0212896	A1	11/2003	Kisliakov	713/193
2004/0024735	A1	2/2004	Yap et al.	707/1
2004/0255081	A1	12/2004	Arnouse	711/115
2005/0038741	A1	2/2005	Bonalle et al.	705/40
2005/0091544	A1	4/2005	Lambert	713/202
2005/0097550	A1	5/2005	Schwabe et al.	717/178
2005/0138354	A1	6/2005	Saltz	713/153
2005/0149926	A1	7/2005	Saltz	718/1
2005/0178833	A1*	8/2005	Kisliakov	235/441
2005/0184163	A1	8/2005	de Jong	235/492
2005/0184164	A1	8/2005	de Jong	235/492
2005/0188360	A1	8/2005	de Jong	717/136

- (51) **Int. Cl.**
G06K 19/00 (2006.01)
- (52) **U.S. Cl.** **235/487; 235/494; 235/382; 711/115; 717/163**
- (58) **Field of Classification Search** **235/382, 235/487, 494; 711/115; 717/163**
See application file for complete search history.

OTHER PUBLICATIONS

Sun Microsystems, Inc., "Java Card™ 2.2 Runtime Environment (JCRE) Specification", Palo Alto, CA, pp. 1-110, [Online] Jun. 2002. (XP002325473).

Sun Microsystems, Inc., "Java Card™ 2.2 Application Programming Interface", Palo Alto, CA, pp. 1-90, [Online] Sep. 2002. (XP002325474).

(56) **References Cited**

U.S. PATENT DOCUMENTS

5,530,232	A	6/1996	Taylor	235/380
5,590,038	A	12/1996	Pitroda	395/241
5,857,079	A	1/1999	Claus et al.	704/33
5,889,941	A *	3/1999	Tushie et al.	726/26
6,005,942	A	12/1999	Chan et al.	380/25
6,024,286	A	2/2000	Bradley et al.	235/492
6,032,136	A	2/2000	Brake, Jr. et al.	705/41
6,101,477	A	8/2000	Hohle et al.	705/1
6,199,762	B1	3/2001	Hohle	235/492
6,308,317	B1	10/2001	Wilkinson et al.	717/5
6,390,374	B1	5/2002	Carper et al.	235/492
6,418,554	B1	7/2002	Delo et al.	717/11
6,477,702	B1	11/2002	Yellin et al.	717/126
6,481,632	B2	11/2002	Wentker et al.	235/492
6,631,849	B2	10/2003	Blossom	235/492
6,915,957	B2	7/2005	Kisliakov	235/492
6,976,635	B2	12/2005	Ashizawa et al.	235/492
2002/0083322	A1	6/2002	Lagosanto et al.	713/172
2002/0134843	A1	9/2002	Ashizawa et al.	235/492

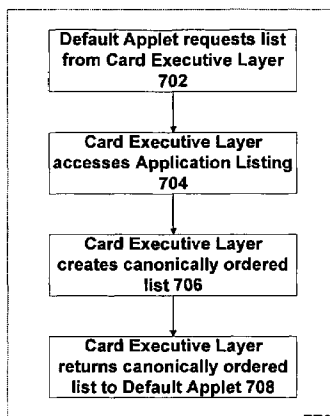
(Continued)

Primary Examiner—Karl D. Frech
(74) *Attorney, Agent, or Firm*—Gunnison, McKay & Hodgson, L.L.P.; Forrest Gunnison

(57) **ABSTRACT**

One embodiment of the invention provides a smart card having multiple applications installed thereon. One of the multiple applications is designated as a default application which is activated whenever the card is reset. The default application is required to implement a first operation to provide a canonically ordered listing of the multiple applications on the card. The default application may further implement a second operation to allow one of the multiple applications to be selected for activation via an index into the listing.

69 Claims, 15 Drawing Sheets



OTHER PUBLICATIONS

Sun Microsystems, Inc., "User's Guide, Wireless Toolkit, Version 2.1, Java™ 2 Platform, Micro Edition", Sana Clara, CA, pp. 7-17, 73-75, [Online] Dec. 2003. (XP002325476).

OSS-J Architecture Board, "OSS Through Java™ J2EE Design Guidelines", *OSS Through Java™*, pp. 1-116, [Online] Oct. 31, 2001. (XP002325475).

* cited by examiner

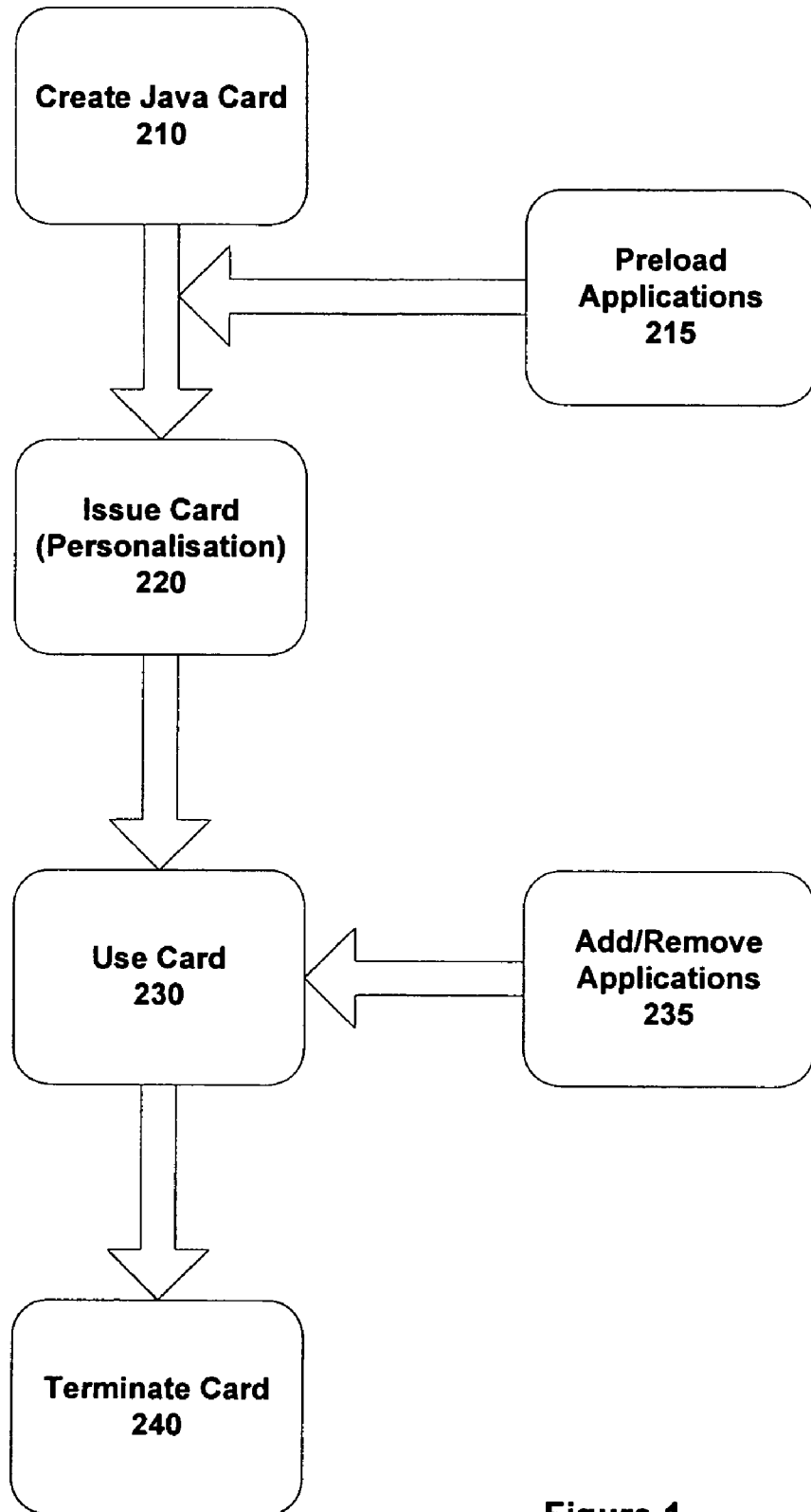


Figure 1

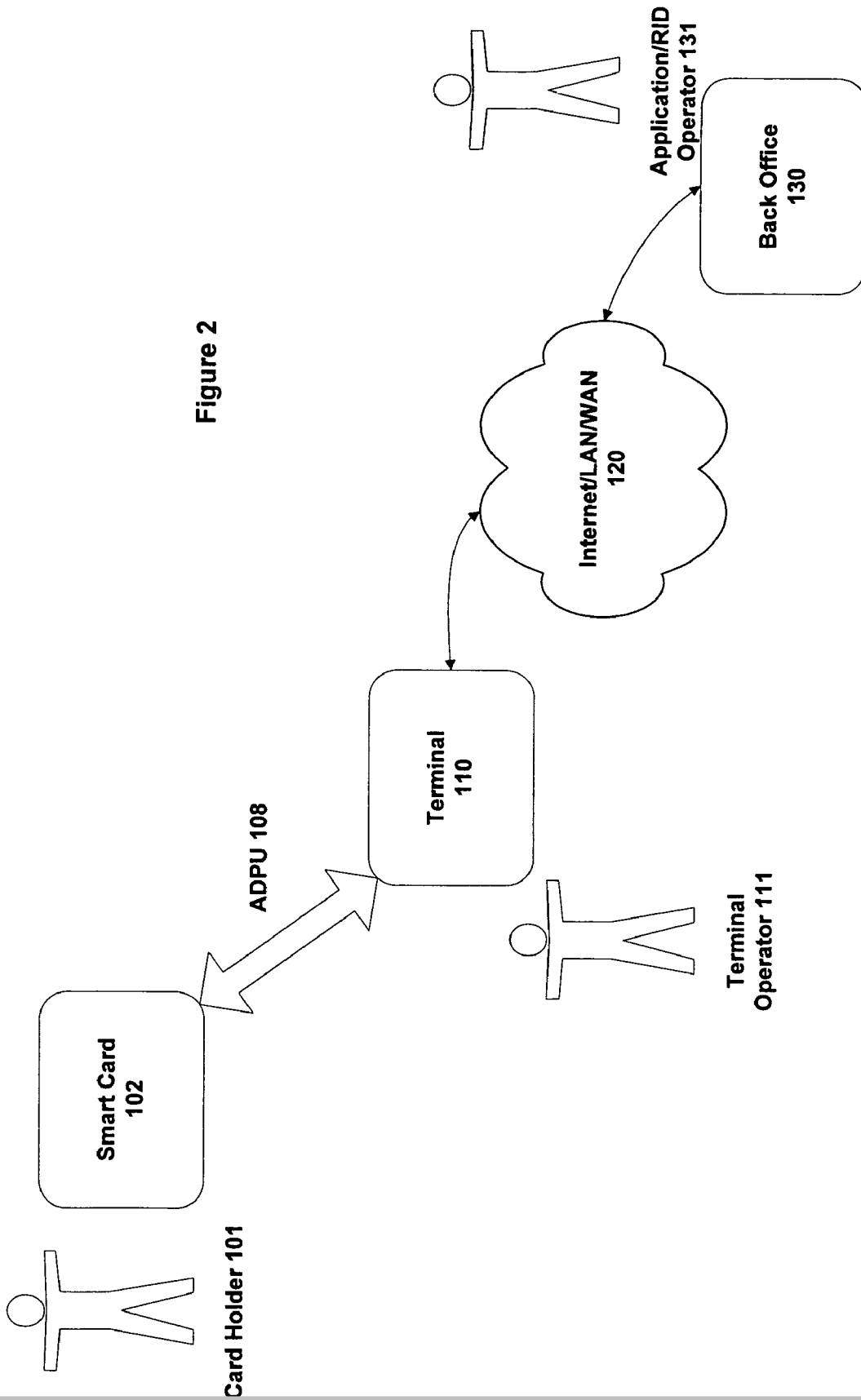


Figure 2

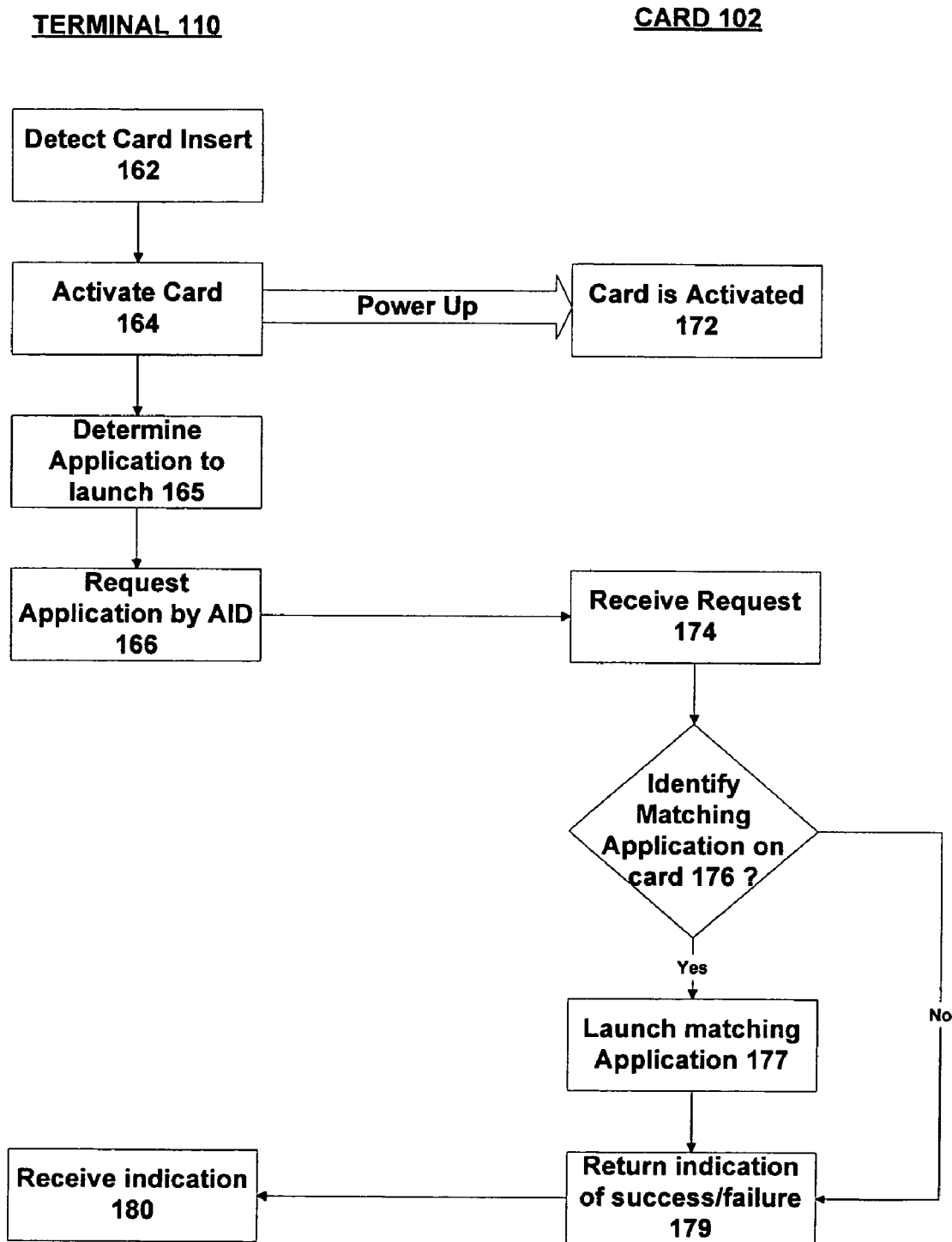


Figure 2A

Explore Litigation Insights

Docket Alarm provides insights to develop a more informed litigation strategy and the peace of mind of knowing you're on top of things.

Real-Time Litigation Alerts



Keep your litigation team up-to-date with **real-time alerts** and advanced team management tools built for the enterprise, all while greatly reducing PACER spend.

Our comprehensive service means we can handle Federal, State, and Administrative courts across the country.

Advanced Docket Research



With over 230 million records, Docket Alarm's cloud-native docket research platform finds what other services can't. Coverage includes Federal, State, plus PTAB, TTAB, ITC and NLRB decisions, all in one place.

Identify arguments that have been successful in the past with full text, pinpoint searching. Link to case law cited within any court document via Fastcase.

Analytics At Your Fingertips



Learn what happened the last time a particular judge, opposing counsel or company faced cases similar to yours.

Advanced out-of-the-box PTAB and TTAB analytics are always at your fingertips.

API

Docket Alarm offers a powerful API (application programming interface) to developers that want to integrate case filings into their apps.

LAW FIRMS

Build custom dashboards for your attorneys and clients with live data direct from the court.

Automate many repetitive legal tasks like conflict checks, document management, and marketing.

FINANCIAL INSTITUTIONS

Litigation and bankruptcy checks for companies and debtors.

E-DISCOVERY AND LEGAL VENDORS

Sync your system to PACER to automate legal marketing.