

Programmed death 1 signaling on chronic myeloid leukemia-specific T cells results in T-cell exhaustion and disease progression

Sabine Mumprecht,¹ Christian Schürch,¹ Juerg Schwaller,² Max Solenthaler,³ and Adrian F. Ochsenbein^{1,4}

¹Tumor Immunology, Department of Clinical Research, University of Berne, Berne; ²Department of Research, Childhood Leukemia, University of Basel, Basel; and ³Department of Hematology and Central Hematology Laboratory and ⁴Institute for Medical Oncology, Inselspital, Berne, Switzerland

Chronic myeloid leukemia (CML) is a malignant myeloproliferative disease with a characteristic chronic phase (cp) of several years before progression to blast crisis (bc). The immune system may contribute to disease control in CML. We analyzed leukemia-specific immune responses in cpCML and bcCML in a retroviral-induced murine CML model. In the presence of cpCML and bcCML expressing the glycoprotein of lymphocytic cho-

riomeningitis virus as a model leukemia antigen, leukemia-specific cytotoxic T lymphocytes (CTLs) became exhausted. They maintained only limited cytotoxic activity, and did not produce interferon- γ or tumor necrosis factor- α or expand after restimulation. CML-specific CTLs were characterized by high expression of programmed death 1 (PD-1), whereas CML cells expressed PD-ligand 1 (PD-L1). Blocking the PD-1/PD-L1 interaction by

generating bcCML in PD-1-deficient mice or by repetitive administration of α PD-L1 antibody prolonged survival. In addition, we found that PD-1 is up-regulated on CD8⁺ T cells from CML patients. Taken together, our results suggest that blocking the PD-1/PD-L1 interaction may restore the function of CML-specific CTLs and may represent a novel therapeutic approach for CML. (Blood. 2009;114:1528-1536)

Introduction

Chronic myeloid leukemia (CML) is a clonal myeloproliferative disorder resulting from the neoplastic transformation of a hematopoietic stem cell.¹ The disease is bi- or triphasic, comprising a chronic, an accelerated, and a terminal blast phase in which the patients develop an acute leukemia of either myeloid (AML) or, less often, lymphoid (ALL) cell type. More than 90% of all CML cases are associated with the presence of the Philadelphia chromosome, which results from a reciprocal translocation between chromosomes 9 and 22 forming the breakpoint cluster region/Abelson protein tyrosine kinase (BCR/ABL) fusion protein, a constitutively activated tyrosine kinase.^{2,3} Depending on the precise breakpoints in the BCR gene, different forms of BCR/ABL fusion protein with different molecular weights can be generated (p190BCR/ABL, p210BCR/ABL, and p230BCR/ABL). CML patients predominantly express p210BCR/ABL.¹

Currently, BCR/ABL-selective tyrosine kinase inhibitors are the standard treatment for CML. However, resistant clones often develop during treatment. At present, the only curative treatment for CML is allogeneic hematopoietic stem cell transplantation.⁴

Several earlier studies suggested that the immune system plays an important role in the control of CML. CML cells are susceptible to lysis by CD8⁺ T cells⁵ and natural killer (NK) cells in vitro.⁶ For unknown reasons, CML is the most graft-versus-leukemia-sensitive leukemia.⁷ In addition, cytotoxic T lymphocytes (CTLs) directed against leukemia antigens are found in CML patients without hematopoietic stem cell transplantation, including CTLs specific for BCR/ABL, overexpressed self-proteins such as proteinase-3, and Wilms tumor 1 protein.^{5,8} However, the physiologic relevance of these leukemia-specific CTL responses in the control of CML is unknown. The presence of CTL escape mechanisms

during CML disease progression to blast crisis suggests that CTLs are involved in the control of the chronic phase of the disease. Documented escape mechanisms include the expression of Fas ligand during blast crisis,⁹ the deletion of high-avidity CTLs specific for a leukemia-associated self-antigen,¹⁰ and the development of functional blocks in the caspase activation pathway in AML cells.¹¹

Coinhibitory molecules are essential for the maintenance of T-cell homeostasis, self-tolerance, and tolerance to chronic infections. Programmed death 1 (PD-1) is a member of the immunoglobulin (Ig) superfamily, which is inducibly expressed on T cells, B cells, and activated monocytes.¹² To mediate inhibitory signals through PD-1, the binding of either of the 2 ligands to the receptor is necessary. PD-ligand 1 (PD-L1, B7-H1) is expressed constitutively on resting T cells, B cells, dendritic cells (DCs), macrophages, mesenchymal stem cells, some parenchymal cells, and cultured bone marrow-derived mast cells. PD-L1 expression is further up-regulated after activation.¹³ PD-ligand 2 (PD-L2, B7-DC) is only inducibly expressed on DCs, macrophages, and cultured bone marrow-derived mast cells.¹³ Recently, PD-1 signaling has been identified as an important mechanism of antigen-specific T-cell dysfunction in chronic infections such as lymphocytic choriomeningitis virus (LCMV) infection in mice¹⁴ or HIV¹⁵ and hepatitis C virus (HCV)¹⁶ infections in humans. In addition, it has been shown that PD-1 leads to functional impairment of tumor-infiltrating T cells in solid tumors.¹⁷ In contrast, mechanisms determining the function of leukemia-specific CTLs have not yet been analyzed in detail.

In the present study, we analyzed the immunosurveillance of chronic phase CML (cpCML) and blast crisis CML (bcCML) in a

Submitted September 16, 2008; accepted April 25, 2009. Prepublished online as *Blood* First Edition paper, May 6, 2009; DOI 10.1182/blood-2008-09-179697.

An Inside *Blood* analysis of this article appears at the front of this issue.

The publication costs of this article were defrayed in part by page charge payment. Therefore, and solely to indicate this fact, this article is hereby marked "advertisement" in accordance with 18 USC section 1734.

© 2009 by The American Society of Hematology

murine retroviral bone marrow transduction and transplantation model.¹⁸ We found that leukemia-specific CTLs were functionally exhausted and phenotypically characterized by high expression of PD-1, in both cpCML and bcCML. Blocking PD-1 signal transduction by using PD-1-deficient recipient mice or by administration of α PD-L1 antibody reversed CML-specific T-cell tolerance, and the time to disease progression was increased.

Methods

Mice

C57BL/6 mice were purchased from Harlan. The p14 T-cell receptor (TCR) transgenic mice¹⁹ and H8 transgenic mice²⁰ were obtained from the Institute for Laboratory Animals. CD45.1⁺ mice were obtained from C. Mueller (University of Berne). PD-1-deficient mice²¹ were provided by T. Honjo (Kyoto University). Animal experiments were performed with sex- and age-matched mice and approved by the Experimental Animal Committee of the Canton of Berne and performed according to Swiss laws for animal protection.

Viruses, peptide, and retroviral vectors

LCMV, strain WE, and Docile were provided by R. M. Zinkernagel (University Hospital, Zurich) and propagated, as described.^{22,23} The LCMV-GP, amino acids 33-41 (glycoprotein [gp]33, KAVYNFATM), was purchased from NeoMPS SA. The retroviral vectors pMSCV-p210 BCR/ABL-IRES-GFP, pMSCV-p210 BCR/ABL-pgk-neo, and pMSCV-NUP98/HOXA9-IRES-GFP (MSCV, mouse stem cell virus; IRES, internal ribosomal entry site; GFP, green fluorescent protein; neo, neomycin) were a gift from D. G. Gilliland (Harvard Medical School), and the packaging vector pIK6 was purchased from Cell Genesys.²⁴⁻²⁶

⁵¹Cr-release assay

Spleens were isolated and analyzed after 5 days of in vitro restimulation in a standard ⁵¹Cr-release assay, as described.²⁷ The cytotoxicity assay of ex vivo isolated p14 T cells was performed as follows: 6×10^5 CD45.1⁺ cells, purified by magnetic cell sorting (MACS; Miltenyi Biotec), were either used directly or restimulated for 5 days with 3×10^5 irradiated gp33-pulsed naive C57BL/6 splenocytes in the presence of 50 U/mL murine interleukin (IL)-2.

Cells and retroviral particle production

Retroviral particles were generated by transient cotransfection of 293-T cells with the respective MSCV vector and pIK6, using Superfect transfection reagent (Qiagen), according to the manufacturer's protocol. After 48 hours, virus-containing supernatant was harvested. For determination of retroviral titers, BA/F3 cells were infected with different amounts of retroviral supernatant using polybrene transfection reagent (10 μ g/mL; Sigma-Aldrich). After 48 hours, retroviral titers were determined by enumerating GFP-positive cells by flow cytometry. Alternatively, to assess virus titers of the vector containing a neocassette, BA/F3 cells were infected and then cultivated for 5 days in the presence or absence of 0.8 mg/mL G-418 sulfate (Gibco). Surviving cells were assessed with trypan blue staining.

CML model

Bone marrow donor mice were pretreated with 150 mg/kg 5-fluorouracil intraperitoneally (Sigma-Aldrich). After 6 days, the bone marrow was flushed out from femurs and tibias. Erythrocytes were removed and the bone marrow cells were incubated in transplant media (RPMI/10% fetal calf serum with recombinant murine IL-3 [6 ng/mL; BD Biosciences], recombinant murine stem cell factor [10 ng/mL; Biocoba], and recombinant human IL-6 [10 ng/mL; BD Biosciences]) for 24 hours. A total of 4×10^6

retroviral particles with polybrene (6.7 μ g/mL) and 0.01 M HEPES (N-2-hydroxyethylpiperazine-N'-2-ethanesulfonic acid) through spin infection (90 minutes at 1258g, 30°C). A total of 10^5 transduced bone marrow cells was injected intravenously into previously irradiated (4.5, 6.5, or 9.5 Gy) syngeneic recipient mice (transduction efficiency: $24.0\% \pm 9.8\%$).

Antibodies and flow cytometry

α CD8-allophycocyanin (APC), α CD4-biotin, α B220-biotin, α A^b-major histocompatibility complex (MHC) class II-biotin, α CD45.1-phycoerythrin (PE) and -APC, α CD11c-biotin, α interferon (IFN)- γ -PE, α tumor necrosis factor (TNF)- α -PE, streptavidin-PE and APC, α NK1.1-biotin, α PD-1-biotin, α PD-L1-biotin, α PD-L2-biotin, rat IgG2a isotype-biotin, and human α PD-1-PE were obtained from eBioscience. α GR-1-PE, α CD8-peridinin chlorophyll protein (PerCP)-Cy5.5, α CD4-PerCP-Cy5.5, α PD-1-PerCP-Cy5.5, α V α 2-biotin and PE, α Sca-1-APC, α MAC-1-PE-Cy7, α C-kit-PE-Cy7, mouse IgG1-PE isotype control, human α CD8-fluorescein isothiocyanate, and human α CD45-PerCP-Cy5.5 were obtained from BD Pharmingen. MHC class I (H-2^b) tetramer-PE complexed with gp33 or nuclear protein (np)396 was obtained from ProImmune and used according to the manufacturer's protocol. Intracellular staining was performed, as described.²⁸ Relative fluorescence intensities were measured on a BD LSRII flow cytometer (BD Biosciences) and analyzed using FlowJo software (TreeStar). The frequency of IFN- γ - and TNF- α -producing CD8⁺ T cells was calculated as gp33-pulsed minus nonpulsed samples.

Adoptive transfer experiments and reisolation of transferred CD8⁺ T cells

$P14 \times CD45.1$ T cells were isolated and purified by MACS for CD8⁺V α 2⁺ T cells. A total of 2.5 to 4×10^6 CD8⁺V α 2⁺CD45.1⁺ cells was injected intravenously into CML mice, naive C57BL/6 control mice, C57BL/6 mice that were infected with 10^4 plaque-forming units (pfu) of LCMV-WE, and C57BL/6 mice chronically infected with 10^7 pfu of LCMV Docile (all recipient mice were CD45.1⁻). CML disease progress was monitored by fluorescence-activated cell sorter (FACS) analysis of blood, and on the days indicated, CD45.1⁺ T cells from CML mice, naive C57BL/6 mice, and C57BL/6 mice infected with LCMV were isolated by MACS.

Proliferation assays

For ex vivo proliferation of transferred p14 T cells, 2×10^5 CD45.1⁺ cells were restimulated for 4 days with 2×10^5 irradiated gp33-pulsed or nonpulsed naive C57BL/6 splenocytes. For in vitro proliferation, naive p14 CD8⁺ T cells and $p14 \times PD-1^{-/-}$ CD8⁺ T cells (2×10^5) were restimulated with irradiated (50 Gy) FACS-sorted H8-cpCML cells (BCR/ABL-GFP⁺), FACS-sorted H8-bcCML cells (NUP98/HOXA9-GFP⁺), H8 splenocytes, or C57BL/6 splenocytes (0.4×10^5). ³H-thymidine incorporation assay was performed, as described.²² The proliferation index was calculated as the ratio between gp33-pulsed and nonpulsed samples (ex vivo proliferation assay) and as the ratio between H8-CML cells or H8 splenocytes and C57BL/6 splenocytes used as stimulators (in vitro proliferation assay).

Cytometric bead array assay

A total of 1.5×10^5 CD45.1⁺ cells was restimulated for 18 hours with 3×10^5 irradiated gp33-pulsed or nonpulsed naive C57BL/6 splenocytes. Cytokine production in supernatant was analyzed with a mouse T helper cell 1/2 cytokine cytometric bead array assay according to the manufacturer's protocol (BD Biosciences).

PD-L1 blockade

bcCML mice were treated intraperitoneally every third day with 200 μ g of α PD-L1 monoclonal antibody (clone 2G9; BioXCell) or IgG from rat serum (I8015; Sigma-Aldrich) starting on the day of transplantation.

CD8 depletion

bcCML mice were treated intraperitoneally on day 0 and day 2, and from

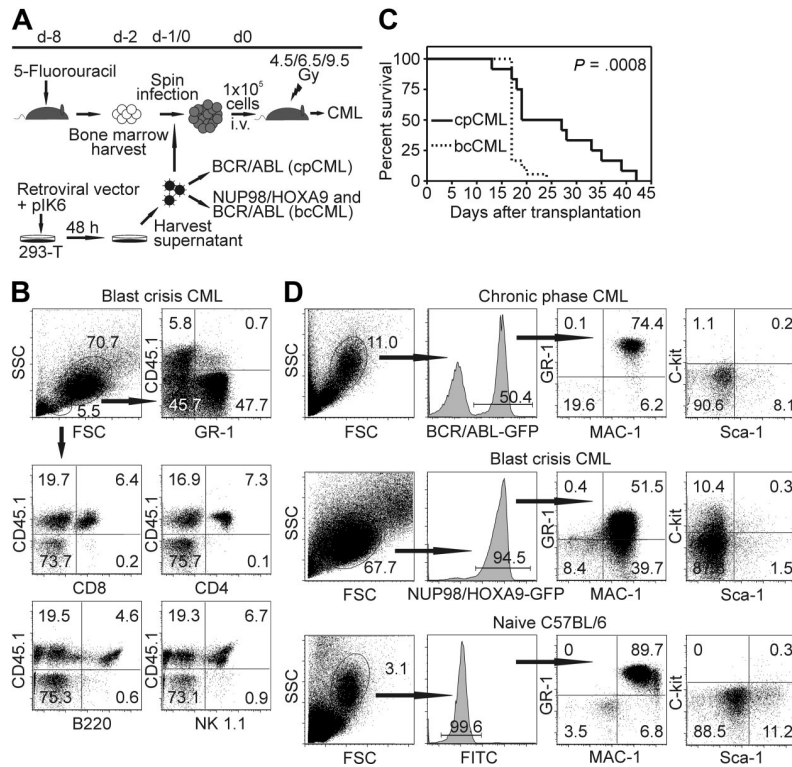


Figure 1. Model of CML-like disease in mice. (A) Schema of retroviral bone marrow transduction and transplantation to irradiated recipient mice. (B) Donor bone marrow (CD45.2⁺) was transferred into CD45.1⁺ recipient mice (irradiated with 4.5 Gy). Twenty days later, PBMCs were stained for GR-1, CD8, CD4, B220, and NK1.1, and analyzed by flow cytometry. Representative dot plots of 1 of 6 mice are shown. (C) Survival of cpCML (—, n = 12) and bcCML (·····, n = 18) mice is shown in Kaplan-Meier plots. Statistical comparison was performed with the log-rank test. (D) Phenotypical characterization of GFP⁺ leukemic cells in cpCML and bcCML mice. Cells were gated on granulocytes in control C57BL/6 mice and on transduced granulocyte populations in cpCML and bcCML mice. One representative staining of 5 is shown.

The treatment depletes CD8⁺ T cells to below the detection limit of flow cytometry analysis (data not shown).

CML patients

Human blood sample collections were approved by the ethical committee of the Canton of Berne, Switzerland, and patients gave their written informed consent in accordance with the Declaration of Helsinki. The average age of healthy donors was 40.6 ± 13.8 years (3 [female] and 5 [male]) and of cpCML patients 46.0 ± 12.2 years (3 [female] and 5 [male]). All cpCML patients expressed p210BCR/ABL.

Statistical analysis

Data are presented as the mean plus or minus SEM. The significance of the differences in Kaplan-Meier survival curves was determined using the log-rank test (2-tailed). The significance between groups of human samples was determined by using unpaired Student *t* test (2-tailed) and the correlation with the Spearman correlation (2-tailed, $\alpha = .05$).

Results

CML-like disease in immunocompetent mice

It has been shown previously that BCR/ABL expression in bone marrow cells leads to cpCML in mice.²⁹ Coexpression of NUP98/HOXA9 leads to accumulation of immature myeloid cells and progression to blast crisis.¹⁸ Therefore, we transduced bone marrow from C57BL/6 mice with retroviral particles expressing p210BCR/ABL alone, or cotransduced bone marrow cells with p210BCR/ABL and NUP98/HOXA9 retroviral particles. Transduced bone marrow cells were adoptively transferred into irradiated syngeneic recipient mice (Figure 1A).

In previous studies, recipient mice were lethally irradiated.^{2,29,30} This completely prevented a leukemia-specific immune response

of CML. In this study, we titrated the irradiation dose and the number of retroviral particles NUP98/HOXA9 and BCR/ABL needed to generate cpCML and bcCML originating from donor bone marrow cells in a host with a largely intact immune system. To address whether immune cells for the control of the leukemia originate from recipient or donor bone marrow, transduced bone marrow cells were transferred into CD45.1⁺ recipient mice. CD8⁺ and CD4⁺ T cells, B cells, and NK cells were found to originate from donor bone marrow (CD45.1⁻) when recipient mice were irradiated with 9.5 Gy (data not shown). In contrast, when recipient mice were irradiated with 4.5 Gy (Figure 1B) or 6.5 Gy (data not shown), immune cells were found to originate from the recipient mouse, whereas the leukemia cells (GR-1⁺) originated from the cotransduced donor bone marrow.

Transduction of bone marrow with BCR/ABL retroviral particles alone (10⁵ U) or cotransduction with NUP98/HOXA9 (10⁶ U) regularly induced cpCML or bcCML, respectively. In contrast, transduction with NUP98/HOXA9 retroviral particles alone did not induce leukemia up to 3 months after transplantation. bcCML rapidly progressed and animals died within 3 weeks, whereas cpCML mice lived up to 6 weeks (Figure 1C). Because the retroviral vectors BCR/ABL in cpCML and NUP98/HOXA9 in bcCML coexpressed the fluorescent dye GFP, the development of CML-like disease was followed with flow cytometry of peripheral blood (Figure 1D). The majority of granulocytes were GFP positive, indicating that these cells expressed BCR/ABL in cpCML or NUP98/HOXA9 in bcCML. In addition, the granulocyte population in the blood of cpCML and bcCML mice was increased to 9 × 10⁷ granulocytes/mL blood compared with the C57BL/6 control (< 2 × 10⁶ granulocytes/mL blood; data not shown). Immature myeloid blast cells (MAC-1⁺, GR-1⁺, c-kit⁺) were detectable in bcCML. In contrast, all transduced GFP⁺ leukemic

(MAC-1⁺, GR-1⁺, c-kit⁻) comparable with untransduced granulocytes in naive C57BL/6 mice (Figure 1D). Therefore, by reducing the dose of irradiation given to recipient mice (4.5 or 6.5 Gy) and by administering defined amounts of retroviral particles, it was possible to reproducibly induce cpCML and bcCML in recipient mice with a largely intact immune system.

Leukemia-specific CTLs are not detectable in CML disease progression

To analyze antigen-specific immune responses *in vivo*, bone marrow from H8 transgenic mice was transduced with the retroviral particles. In this experimental setup, all leukemia cells expressed the immunodominant CTL epitope gp33 of LCMV on MHC class I molecules as a model leukemia antigen (H8-CML mice). The leukemia-specific CTL response was analyzed in H8-CML mice at different time points after bone marrow transplantation. Transduction of bone marrow with 0.01×10^6 U of BCR/ABL or cotransduction with 0.01×10^6 U of BCR/ABL and 0.1×10^6 U of NUP98/HOXA9 retroviral particles induced a transient increase of GFP-positive granulocytes in recipient mice, but by day 30 all leukemia cells were eliminated (data not shown). Tetramer staining revealed that recipient mice that eliminated CML developed a LCMV-gp33-specific CTL response (Figure 2A). In contrast, if bone marrow cells were transduced with 0.1×10^6 U of BCR/ABL alone or together with 10^6 U of NUP98/HOXA9 retroviral particles, H8-cpCML and H8-bcCML persisted and progressed to the death of the animals (disease kinetics comparable with Figure 1C). In H8-cpCML and H8-bcCML mice, LCMV-gp33-specific CTLs were not detectable by tetramer staining (Figure 2A) or by intracellular staining for IFN- γ or TNF- α after *in vitro* restimulation with gp33 (Figure 2B). In addition, CTLs isolated from cpCML and bcCML mice were not able to lyse gp33 peptide-pulsed target cells *ex vivo* after 5 days of *in vitro* restimulation (Figure 2C). Naive C57BL/6 mice and LCMV-immune mice that have been infected 8 weeks previously with 200 pfu of LCMV-WE were used as controls (Figure 2A-C).

To test whether gp33-specific CTLs can be activated in mice with CML-like disease, H8-cpCML, H8-bcCML mice, and control C57BL/6 mice were infected with 200 pfu of LCMV. Eight days later, the frequencies of CML-specific CTLs (gp33) and of CTLs specific for an unrelated viral epitope (np396) were analyzed by tetramer staining. In H8-cpCML and H8-bcCML mice, np396-specific CTLs, but not gp33-specific CTLs, were detectable (Figure 2D). In contrast, naive C57BL/6 mice infected with LCMV mounted gp33- and np396-specific CTL responses. These results demonstrate that (a) leukemia cells were able to induce a specific CTL response, and (b) in the presence of CML-like disease with high leukocytes counts, leukemia antigen-specific CTLs were not present.

CML-specific CTLs have residual effector functions

To study CML-specific CTL responses in more detail, purified p14 TCR transgenic CD8⁺ T cells (CD45.1⁺CD8⁺V α 2⁺) specific for LCMV-gp33 were adoptively transferred to H8-bcCML mice and to naive and LCMV-infected control mice. After transfer to H8-bcCML mice, p14 CD8⁺ T cells rapidly expanded in blood (Figure 3A) and spleen (Figure 3B). The specific CTLs reached a frequency of 25% of total lymphocytes 6 days after transfer. Thereafter, their number rapidly declined, reaching a stable frequency of approximately 2.8% (\pm 1.9%), which is slightly above

mice. In addition, the leukemia-specific TCR chain V α 2 was down-regulated on CML-specific CTLs in blood (mean V α 2⁺ p14 CD8⁺ T cells: CML, 42.1% \pm 25.8%; naive C57BL/6, 92.3% \pm 3.5%; LCMV-infected, 79.2% \pm 16.8%; Figure 3C) and spleen (data not shown), indicating TCR ligation and CTL activation. P14 CD8⁺ T cells transferred to C57BL/6 control mice did not proliferate or down-regulate the specific TCR, whereas p14 CD8⁺ T cells transferred to LCMV-infected mice rapidly expanded. Due to the large number of transferred specific CTLs, LCMV-WE was rapidly eliminated and V α 2 expression was already reconstituted in most animals at day 3 after transfer (Figure 3A-C). The down-regulation of the TCR V α 2 did not correlate with the percentage of leukemic GFP⁺ granulocytes when analyzed in blood (Spearman correlation, $P = .49$, $r = -0.17$; Figure 3D). We concluded that naive specific CTLs in H8-bcCML mice were initially activated after TCR ligation and expanded. However, the majority of these CML-specific CTLs were deleted, and only a small fraction persisted long-term.

Memory CD8⁺ T cells in chronic infections with persisting antigen are either physically deleted or functionally impaired, a process termed exhaustion.³¹ To analyze the degree of functional impairment of specific CD8⁺ T cells in the presence of H8-bcCML, adoptively transferred p14 CD8⁺ T cells were isolated from spleens of H8-bcCML mice and of naive and LCMV-infected control mice 6 days after transfer. P14 CTLs isolated from H8-bcCML mice produced hardly any proinflammatory cytokines such as IFN- γ , TNF- α , or IL-2 after *in vitro* restimulation (Figure 4A). In contrast, p14 CTLs isolated from LCMV-infected mice produced high amounts of IFN- γ and TNF- α (Figure 4A). In addition, p14 CTLs isolated from H8-bcCML mice did not lyse peptide-pulsed target cells directly *ex vivo* (data not shown), and had only limited lytic capacity after 5 days of *in vitro* restimulation (Figure 4B). Therefore, the cytokine profile and lytic function of LCMV-specific CD8⁺ T cells define effector CTLs, whereas the characteristic of CML-specific CD8⁺ T cells is consistent with partial exhaustion.

To analyze whether the lytic function of the transferred CTLs is sufficient to influence the leukemia load, we followed the frequency of GFP⁺ granulocytes before and 6 days after the transfer of p14 CD8⁺ T cells. In most animals, the frequency of GFP⁺ granulocytes was at least transiently reduced (Figure 4C). This indicates that the transferred naive p14 CD8⁺ T cells acquired effector function *in vivo* sufficient to transiently reduce the leukemia load.

To assess the proliferative capacity of the isolated p14 CD8⁺ T cells, ³H-thymidine incorporation was measured after *in vitro* restimulation. P14 CTLs from C57BL/6 control mice with a naive phenotype proliferated vigorously in contrast to effector p14 CTLs isolated from acute LCMV-infected mice (Figure 4A-B,D). P14 CTLs isolated from H8-bcCML mice neither expanded efficiently *in vitro* (Figure 4D) nor exhibited effector functions (Figure 4A-B). Thus, CML-specific CTLs are partially exhausted with limited residual effector functions.

Myeloid leukemia cells suppress T-cell proliferation through PD-1/PD-L1 interaction

CTLA-4 and PD-1 are 2 well-known coinhibitory molecules that are of importance in the maintenance of peripheral tolerance.³² Therefore, we analyzed their expression on total and on CML-specific CD8⁺ T cells. In H8-bcCML mice, PD-1 was highly expressed on the transferred CML-specific p14 CTLs in the blood

expressed on transferred p14 CD8⁺ T cells in C57BL/6 control mice, and was only expressed at low levels on p14 CTLs in acutely LCMV-WE-infected mice. However, as shown previously,¹⁴ PD-1 expression was high on p14 CTLs in mice chronically infected with LCMV Docile. The expression of PD-1 on transferred p14 CTLs in H8-bcCML mice was substantially higher than in mice with persistent LCMV infection (Figure 5A). Surprisingly, a large fraction of total CD8⁺ T cells expressed PD-1 (93.5% ± 1.8% in

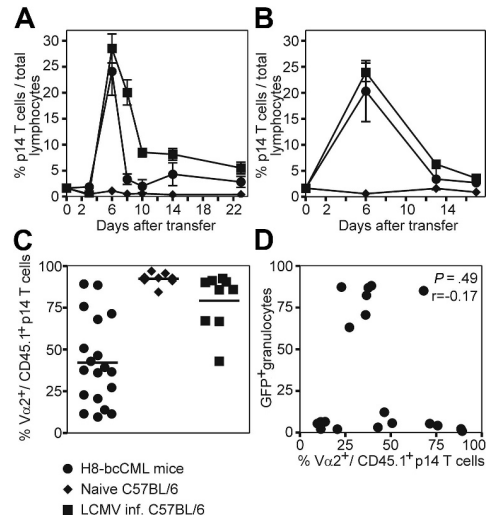
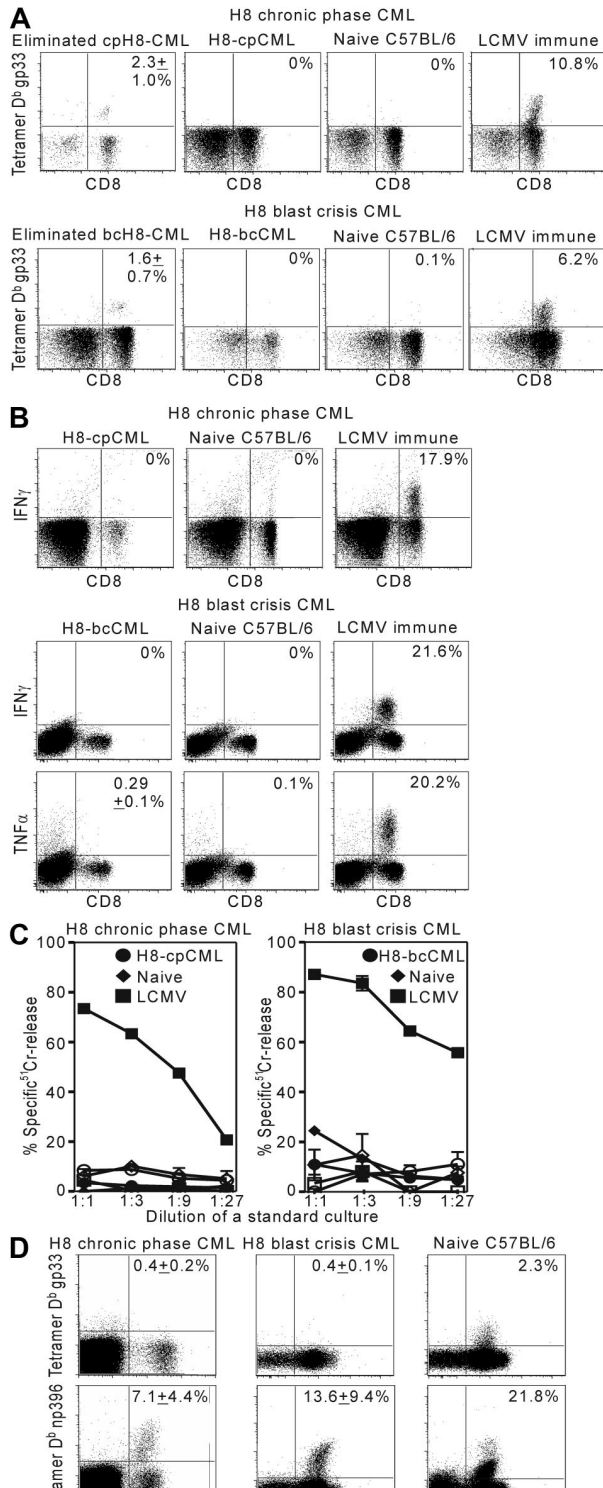


Figure 3. Adoptive transfer of leukemia-specific TCR transgenic CD8⁺ T cells to H8-bcCML mice. Purified p14 CD8⁺ T cells (CD45.1⁺CD8⁺Vα2⁺) were adoptively transferred to H8-bcCML mice (●), to naive C57BL/6 control mice (◆), and to C57BL/6 mice infected with 10⁴ pfu of LCMV (■). (A-B) The expansion of the transferred p14 CD8⁺ T cells (CD45.1⁺) was analyzed in the blood (A) and spleen (B) by flow cytometry analysis. (C) The expression of the leukemia-specific TCR Vα2 on the transferred p14 CD8⁺ T cells (CD45.1⁺) was analyzed in blood 3 days after transfer by flow cytometry analysis. (D) The expression of the TCR Vα2 was compared with the percentage of leukemic granulocytes (GFP⁺) in the blood 3 days after transfer. Results are pooled from 5 independent experiments. Statistical comparison was made using the Spearman correlation.

H8-CML mice; data not shown). In contrast, CTLA-4 was not expressed on transferred CML-specific CTLs in blood (data not shown) and spleen (Figure 5B) in H8-bcCML mice.

The observation of high rates of PD-1 expression on total CD8⁺ T cells prompted us to analyze the expression of PD-1 on non-leukemia-specific CTLs. Therefore, cpCML and bcCML from C57BL/6 bone marrow donors were induced in p14 recipient mice. In this experimental setup, 60% of CD8⁺ T cells express the TCR Vα2 and are non-leukemia specific. PD-1 was expressed on 3.4% (± 2.3%) of p14 CD8⁺ T cells in cpCML and on 7.9% (± 3.2%) in bcCML (Figure 5C). Therefore, PD-1 expression in cpCML and in bcCML is not restricted to leukemia-specific CTLs. However, the majority of leukemia-specific CTLs expressed PD-1 (Figure 5A).

We next investigated the expression of both PD-Ls on granulocytes in various organs, such as bone marrow, spleen, inguinal and mesenteric lymph nodes, thymus, and peripheral blood. PD-L1 was up-regulated on leukemic (GFP⁺) granulocytes in H8-cpCML and H8-bcCML in spleen (H8-cpCML, 38%; H8-bcCML, 100%) and bone marrow compared with the granulocyte population of naive C57BL/6 mice (Figure 5D). In contrast, PD-L2 was not expressed on leukemic cells in H8-cpCML and H8-bcCML mice (Figure 5D).

Figure 2. Presence of leukemia-specific CTLs in CML. Bone marrow from H8 mice was transduced with BCR/ABL-GFP or cotransduced with NUP98/HOXA9-GFP and BCR/ABL-neo and injected into 4.5 Gy irradiated C57BL/6 mice. (A-B) The frequency of gp33-specific CTLs was analyzed by tetramer staining (A) and intracellular IFN-γ and TNF-α staining (B) in the blood of mice that eliminated H8-cpCML and H8-bcCML, in mice with progressive H8-cpCML and H8-bcCML, in naive C57BL/6, and in LCMV-immune mice. (C) Splenocytes of H8-cpCML and H8-bcCML mice were isolated 20 days after BMT and analyzed in a standard ⁵¹Cr-release assay (gp33-pulsed target cells [filled symbols]; nonpulsed target cells [open symbols]). CTL activity is given as mean ± SEM of 4 CML mice (●), naive C57BL/6 (◆), and LCMV-immune mice (■). (D) H8-cpCML and H8-bcCML mice and C57BL/6 controls were infected with 200 pfu of LCMV intravenously. Eight days after LCMV infection,

Explore Litigation Insights

Docket Alarm provides insights to develop a more informed litigation strategy and the peace of mind of knowing you're on top of things.

Real-Time Litigation Alerts



Keep your litigation team up-to-date with **real-time alerts** and advanced team management tools built for the enterprise, all while greatly reducing PACER spend.

Our comprehensive service means we can handle Federal, State, and Administrative courts across the country.

Advanced Docket Research



With over 230 million records, Docket Alarm's cloud-native docket research platform finds what other services can't. Coverage includes Federal, State, plus PTAB, TTAB, ITC and NLRB decisions, all in one place.

Identify arguments that have been successful in the past with full text, pinpoint searching. Link to case law cited within any court document via Fastcase.

Analytics At Your Fingertips



Learn what happened the last time a particular judge, opposing counsel or company faced cases similar to yours.

Advanced out-of-the-box PTAB and TTAB analytics are always at your fingertips.

API

Docket Alarm offers a powerful API (application programming interface) to developers that want to integrate case filings into their apps.

LAW FIRMS

Build custom dashboards for your attorneys and clients with live data direct from the court.

Automate many repetitive legal tasks like conflict checks, document management, and marketing.

FINANCIAL INSTITUTIONS

Litigation and bankruptcy checks for companies and debtors.

E-DISCOVERY AND LEGAL VENDORS

Sync your system to PACER to automate legal marketing.