

DECLARATION OF NATHANIEL E FRANK-WHITE

1. I am a Records Request Processor at the Internet Archive, located in San Francisco, California. I make this declaration of my own personal knowledge.
2. The Internet Archive is a website that provides access to a digital library of Internet sites and other cultural artifacts in digital form. Like a paper library, we provide free access to researchers, historians, scholars, and the general public. The Internet Archive has partnered with and receives support from various institutions, including the Library of Congress.
3. The Internet Archive has created a service known as the Wayback Machine. The Wayback Machine makes it possible to browse more than 450 billion pages stored in the Internet Archive's web archive. Visitors to the Wayback Machine can search archives by URL (i.e., a website address). If archived records for a URL are available, the visitor will be presented with a display of available dates. The visitor may select one of those dates, and begin browsing an archived version of the Web. Links on archived files in the Wayback Machine point to other archived files (whether HTML pages or other file types), if any are found for the URL indicated by a given link. For instance, the Wayback Machine is designed such that when a visitor clicks on a hyperlink on an archived page that points to another URL, the visitor will be served the archived file found for the hyperlink's URL with the closest available date to the initial file containing the hyperlink.
4. The archived data made viewable and browseable by the Wayback Machine is obtained by use of web archiving software that automatically stores copies of files available via the Internet, each file preserved as it existed at a particular point in time.
5. The Internet Archive assigns a URL on its site to the archived files in the format `http://web.archive.org/web/[Year in yyyy][Month in mm][Day in dd][Time code in hh:mm:ss]/[Archived URL]` aka an "extended URL". Thus, the extended URL `http://web.archive.org/web/19970126045828/http://www.archive.org/` would be the URL for the record of the Internet Archive home page HTML file (`http://www.archive.org/`) archived on January 26, 1997 at 4:58 a.m. and 28 seconds (1997/01/26 at 04:58:28). The date indicated by an extended URL applies to a preserved instance of a file for a given URL, but not necessarily to any other files linked therein. Thus, in the case of a page constituted by a primary HTML file and other separate files (e.g., files with images, audio, multimedia, design elements, or other embedded content) linked within that primary HTML file, the primary HTML file and the other files will each have their own respective extended URLs and may not have been archived on the same dates.
6. Attached hereto as Exhibit A are true and accurate copies of screenshots of the Internet Archive's records of the archived files for the URLs and the dates specified in the attached coversheet of each printout.



7. I declare under penalty of perjury that the foregoing is true and correct.

DATE: March 24, 2022

Nathaniel E Frank-White
Nathaniel E Frank-White

EXHIBIT A

<https://web.archive.org/web/20120422111453/http://www.nejm.org/doi/full/10.1056/NEJMoa1103849>

9



ORIGINAL ARTICLE
BRIEF REPORT

Chimeric Antigen Receptor–Modified T Cells in Chronic Lymphoid Leukemia

David L. Porter, M.D., Bruce L. Levine, Ph.D., Michael Kalos, Ph.D., Adam Bagg, M.D., and Carl H. June, M.D.
N Engl J Med 2011; 365:725-733 | August 25, 2011

Abstract Article References Citing Articles (67) Letters

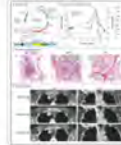
We designed a lentiviral vector expressing a chimeric antigen receptor with specificity for the B-cell antigen CD19, coupled with CD137 (a costimulatory receptor in T cells [4-1BB]) and CD3-zeta (a signal-transduction component of the T-cell antigen receptor) signaling domains. A low dose (approximately 1.5×10^5 cells per kilogram of body weight) of autologous chimeric antigen receptor–modified T cells reinfused into a patient with refractory chronic lymphocytic leukemia (CLL) expanded to a level that was more than 1000 times as high as the initial engraftment level in vivo, with delayed development of the tumor lysis syndrome and with complete remission. Apart from the tumor lysis syndrome, the only other grade 3/4 toxic effect related to chimeric antigen receptor T cells was lymphopenia. Engineered cells persisted at high levels for 6 months in the blood and bone marrow and continued to express the chimeric antigen receptor. A specific immune response was detected in the bone marrow, accompanied by loss of normal B cells and leukemia cells that express CD19. Remission was ongoing 10 months after treatment. Hypogammaglobulinemia was an expected chronic toxic effect.

Full Text of ...

Read the Full Article...

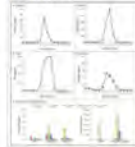
MEDIA IN THIS ARTICLE

FIGURE 1



Clinical Response in the Patient.

FIGURE 2



Serum and Bone Marrow Cytokines before and after Chimeric Antigen Receptor T-Cell Infusion.

ARTICLE ACTIVITY

67 articles have cited this article »

TOOLS

- PDF
- Print
- Download Citation
- Slide Set
- Supplementary Material
- E-Mail
- Save
- Article Alert
- Reprints & Permissions
- Share/Bookmark

RELATED ARTICLES

EDITORIAL
Redirecting T Cells
August 25, 2011 | W.J. Urbia and D.L. Longo

CORRESPONDENCE
Chimeric Antigen Receptor–Modified T Cells in CLL
November 17, 2011

TOPICS

Cancer ▾
Leukemia/
Lymphoma ▾

MORE IN

Research ▾
August 25, 2011 ▾

ADVERTISEMENT

TRENDS: MOST VIEWED (Last Week)

Dengue
April 12, 2012

A Reader's Guide to 200 Years of the *New England Journal of Medicine*
January 5, 2012

Whistling in the Dark
April 12, 2012

[More Trends »](#)

FREE Weekly Table of Contents

[Sign Up](#)

INTRODUCING THE
NEJM iPad Edition!
Try it today



Explore Litigation Insights

Docket Alarm provides insights to develop a more informed litigation strategy and the peace of mind of knowing you're on top of things.

Real-Time Litigation Alerts



Keep your litigation team up-to-date with **real-time alerts** and advanced team management tools built for the enterprise, all while greatly reducing PACER spend.

Our comprehensive service means we can handle Federal, State, and Administrative courts across the country.

Advanced Docket Research



With over 230 million records, Docket Alarm's cloud-native docket research platform finds what other services can't. Coverage includes Federal, State, plus PTAB, TTAB, ITC and NLRB decisions, all in one place.

Identify arguments that have been successful in the past with full text, pinpoint searching. Link to case law cited within any court document via Fastcase.

Analytics At Your Fingertips



Learn what happened the last time a particular judge, opposing counsel or company faced cases similar to yours.

Advanced out-of-the-box PTAB and TTAB analytics are always at your fingertips.

API

Docket Alarm offers a powerful API (application programming interface) to developers that want to integrate case filings into their apps.

LAW FIRMS

Build custom dashboards for your attorneys and clients with live data direct from the court.

Automate many repetitive legal tasks like conflict checks, document management, and marketing.

FINANCIAL INSTITUTIONS

Litigation and bankruptcy checks for companies and debtors.

E-DISCOVERY AND LEGAL VENDORS

Sync your system to PACER to automate legal marketing.