



US005565843A

United States Patent [19] Meyvis

[11] **Patent Number:** 5,565,843
[45] **Date of Patent:** Oct. 15, 1996

[54] **GARAGE DOOR MESSAGE DISPLAY SYSTEM**

4,821,024 4/1989 Bayha 340/545
4,835,520 5/1989 Aiello 340/525
4,955,315 9/1990 Lee 116/28 R

[75] Inventor: **Daniel V. Meyvis**, Bloomfield Hills, Mich.

Primary Examiner—Jeffery Hofsass
Assistant Examiner—Julie B. Lieu
Attorney, Agent, or Firm—Young & Basile, P.C.

[73] Assignee: **Stanley Home Automation**, Novi, Mich.

[21] Appl. No.: **409,592**

[57] **ABSTRACT**

[22] Filed: **Mar. 24, 1995**

A visual display panel is mounted on the exterior surface of a power-operated garage door to display messages for viewing by occupants of a departing automobile after the garage door has closed. The display panel may be part of an integrated home automation system (IHAS) so that, in addition to pre-programmed messages, the operational status of household devices included in the IHAS are presented on the display panel. Actuation of the garage door operator to open the garage door can also cause the IHAS to direct changes in the operation of one or more of the included devices.

[51] Int. Cl.⁶ **G08B 13/08**

[52] U.S. Cl. **340/545; 340/330; 340/326; 49/25; 49/31; 49/13; 341/176**

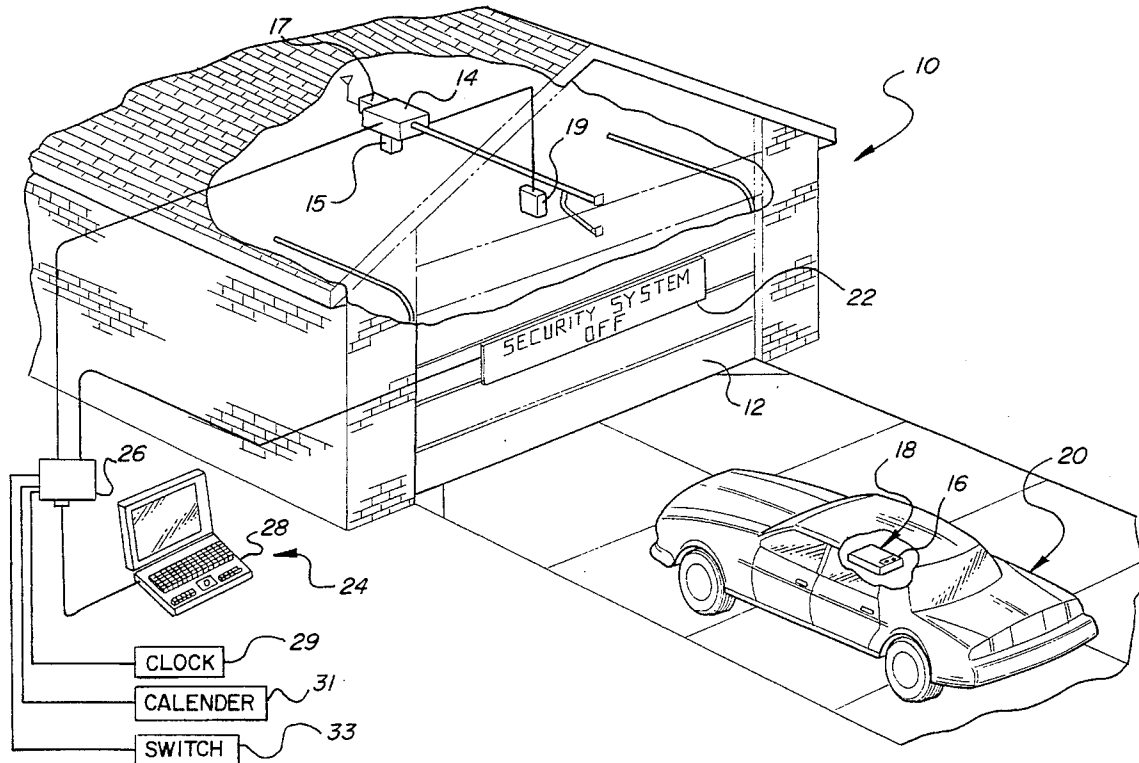
[58] **Field of Search** 340/815.4, 815.6, 340/330, 326, 825.69, 825.72, 545, 932.2, 332; 341/176; 49/25, 31, 13; 116/28 R; 45/451

[56] **References Cited**

U.S. PATENT DOCUMENTS

4,464,651 8/1984 Duhamel 340/521

16 Claims, 2 Drawing Sheets



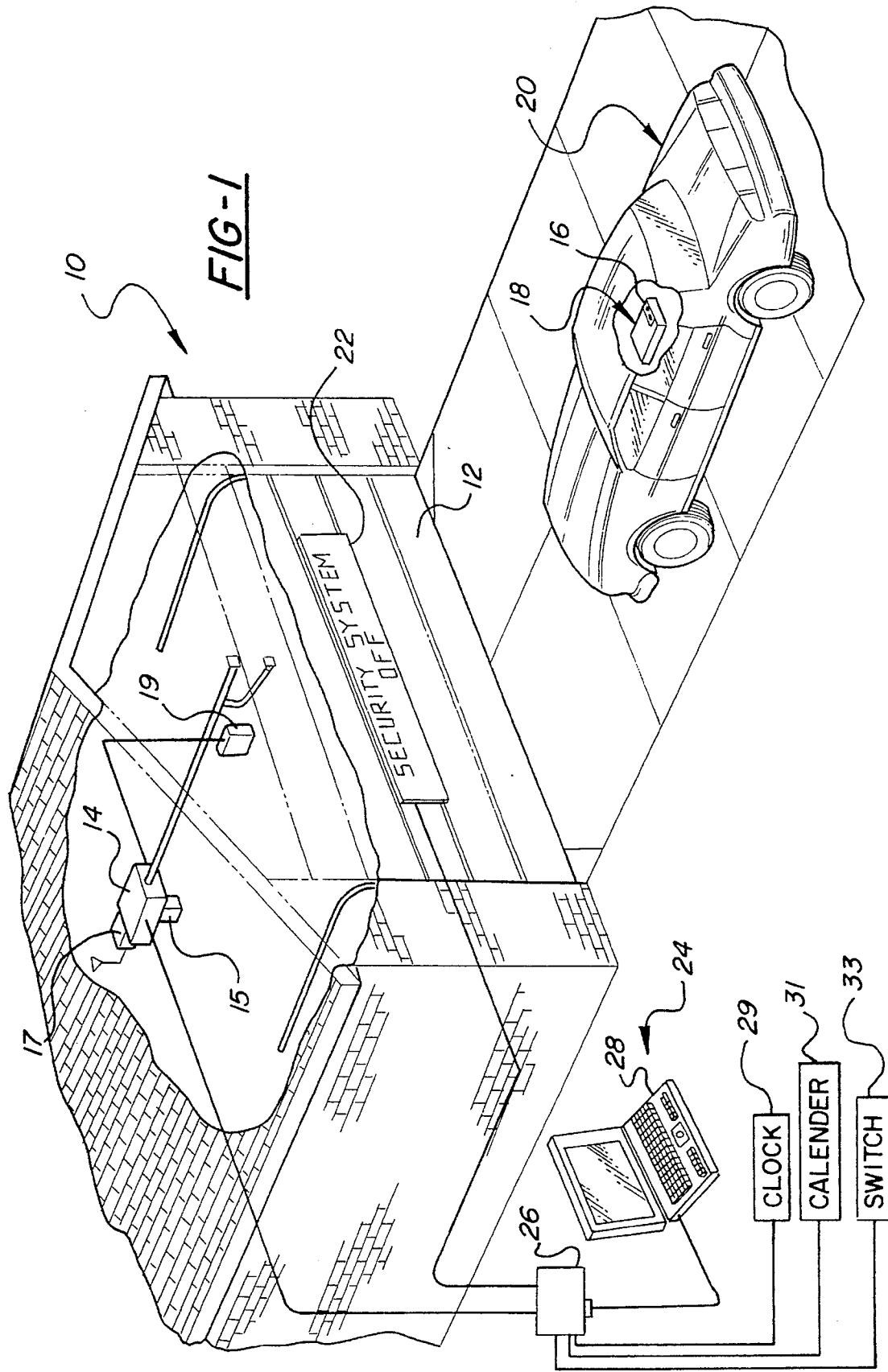


FIG - 3

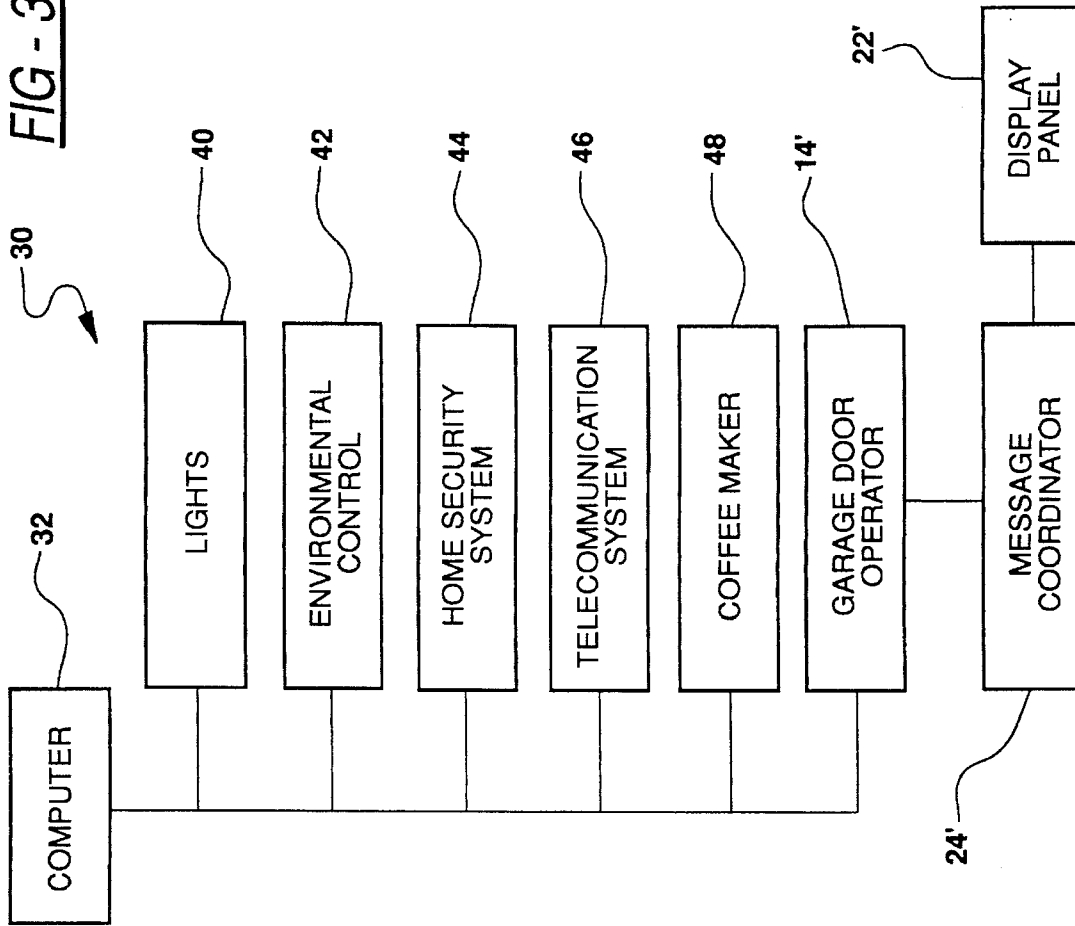
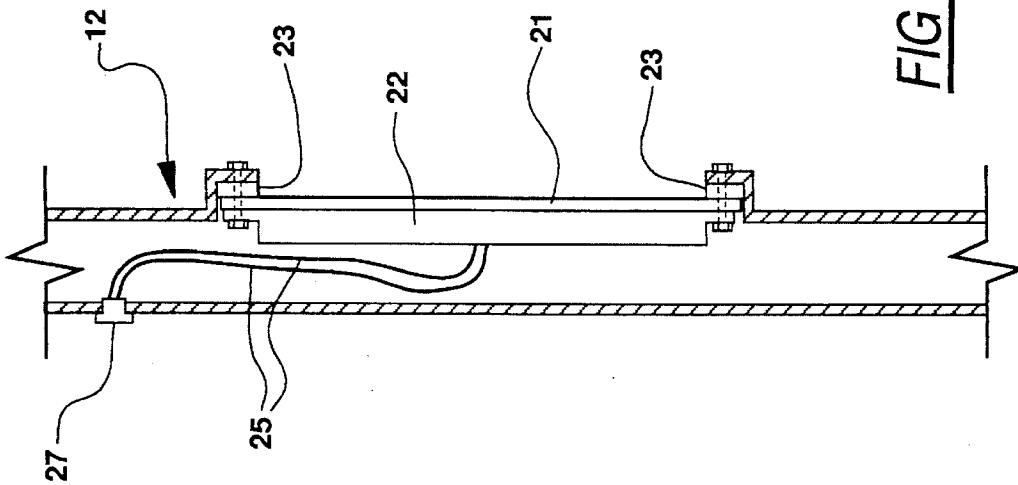


FIG - 2



GARAGE DOOR MESSAGE DISPLAY SYSTEM

FIELD OF THE INVENTION

The present invention relates to a garage door mounted visual display panel for the display of messages to the occupants of an automobile when the garage door is in the closed position. More specifically, the present invention relates to such a garage door display panel operating as part of an integrated home automation system.

BACKGROUND OF THE INVENTION

Home security systems, environment control systems, telephone answering machines, lights and appliances found in the home can be controlled by microprocessor based, programmable control systems. Several commercially available systems provide the capability to connect electrically operated appliances and lights in a house-wide network. Such a network is known as an integrated home automation system (IHAS). These systems provide centralized, programmable control over any and all of the devices making up the network.

One such system is TotalHome, made by Honeywell. A description of this system is given in the May 1992 issue of "Popular Science" magazine on page 48. TotalHome includes a wall-mounted microprocessor-based control unit and provides the ability to control up to ten lights or appliances, ten points of security, and home temperature. In TotalHome and other similar systems, the existing household electrical wiring into which appliances are plugged for power is used to provide electronic communication between those appliances and the control unit. In a system configured in this manner a person may program the control unit to start, stop or otherwise alter the operation of various appliances at the appropriate time throughout a daily, weekly, or monthly schedule. The program may be reviewed and the operational status of any appliance monitored by means of a small visual display located on the control unit.

Electrically powered garage door operators are widely used in American homes and may be remotely actuated, usually by means of a radio frequency transmitter, to open and close a garage door. One such garage door operator is described in U.S. Pat. No. 4,025,809 the disclosure of which is incorporated herein by reference.

Personal computers may be used as planning and scheduling tools, with many companies selling software packages which allow a person to maintain an electronic calendar of upcoming appointments and events. The user can update the computer data base as necessary and thereby reduce the likelihood of forgetting any of these commitments. One practical limitation on the usefulness of a schedule maintained on a computer data base is that in order to be reminded of a scheduled event a user must have access to the computer and consult the data base in some fashion, i.e., must enter commands through a keyboard or the like to call up the information on a personal computer display screen.

An effective time to remind a computerized schedule user of events scheduled for a particular day is before the user departs his/her home at the start of that day. This is also an appropriate time to alert that person to any important information about the status of household systems or devices. Assuming that the person leaves home by way of a garage, the exterior surface of the garage door provides, when in the closed position, an area clearly visible to occupants of a

SUMMARY OF THE INVENTION

It is an objective of the present invention to provide a system by which messages may be presented to the occupants of a vehicle immediately after it has exited a garage equipped with a power door operator. This is accomplished by mounting a display panel to the garage door so that the panel is visible from a vehicle located outside the garage when the garage door is closed. The display panel is electronically interfaced with message generator means which produces visual displays on the panel. The message generator means may consist of a personal computer, a clock, and/or any other electronic device or combination of devices capable of providing the necessary data and presenting it to the display in usable form. The message generator means is triggered when a garage door operator is actuated to move the garage door from an open position to its closed position so that the display panel is only activated when the door closes, and then only for a programmed length of time.

In a preferred embodiment of the present invention, both the garage door operator and the garage door mounted display panel are components of an integrated home automation system (IHAS). A computer directs operation of the household electrical devices which make up the IHAS and also collects information regarding the status of the devices and transfers it to the display panel for presentation. Any other information stored in the computer, such as scheduled events, may also be presented on the panel.

BRIEF DESCRIPTION OF THE DRAWINGS

FIG. 1 is a perspective view showing the major components of the first embodiment of the present invention;

FIG. 2 is a cross sectional view of a garage door having a built-in display panel; and

FIG. 3 is a schematic diagram of the second embodiment of the present invention.

DETAILED DESCRIPTION OF THE PREFERRED EMBODIMENT

FIG. 1 shows a garage 10 with a garage door 12 which is movable between its open and closed positions by a mechanically conventional power-driven garage door operator 14 such as that of U.S. Pat. No. 3,825,809 titled "Garage Door Power Operator Having Partial Open Capability", issued Jul. 23, 1979, the disclosure of which is incorporated herein by reference. Garage door operator 14 may be actuated to open and close garage door 12 by means of a remote control transmitter 18, usually carried in an automobile 20, which emits a radio frequency signal when an open/close button 16 is depressed. A receiver 17 associated with door operator 14 actuates door operator 14 when the signal emitted by transmitter 18 is received. Alternatively, the operator 14 may be actuated by a push button switch 19 which is hard-wired to the operator. The operator 14 may be chain, cable or screw drive or any other suitable design for raising and lowering a garage door on demand.

In accordance with the invention, an electronic display panel 22 is mounted on the exterior surface of garage door 12 in a position so that it may be viewed by occupants of automobile 20 when it is outside of garage 10 and garage door 12 is closed.

In the preferred embodiment shown in FIG. 2, display panel 22 and garage door 12 are constructed as an integrated

and visible through an opening formed in the door's exterior surface. A pane **21** of transparent, impact-resistant plastic or the like covers display panel **22**, and gasket **23** surrounds the opening in door **12** to provide a weather-proof seal. Electrical wires **25** associated with panel **22** are routed through the interior of door **12**, terminating at a connector **27** located on the interior of door **12**. Alternatively, display panel **22** may be constructed as a self contained, weather-sealed unit and attached to the exterior of an existing garage door with screws, adhesive or other suitable fastening means.

Display panel **22** is capable of displaying alphanumeric and other graphic symbols and may be any of the several types of electronically controlled displays commonly used in computer peripheral devices, among these being liquid crystal displays, light emitting diode displays, plasma displays, or flat panel cathode ray displays. The size and brightness of the symbols presented on display panel **22** must be at least sufficient to be readable by occupants of automobile **20** when it is stopped immediately outside of garage **10**. Symbology should therefore be a minimum of from 2 to 6 inches high. For some applications, the system owner may wish to be able to read messages on display panel **22** from a greater distance away, such as from the end of a long driveway, and so symbology on the order of up to 12 inches high may be used. Consequently, the optimum type and size of display may vary with different specific applications, but a display of approximately 12 inches high by 36 inches long is adequate for most uses. Note that a display panel **22** of a given size will be capable of presenting either a single line of large text or multiple lines of smaller sized text.

As shown in FIG. 1, display panel **22** and garage door operator **14** are electronically coupled to a microprocessor-based message generator system **24**. Message generator system **24** includes a message coordinator **26** which serves as a "driver" for display panel **22**, generating the electronic signals necessary to produce visual displays. Message coordinator **26** also provides means to collect and integrate electronic information from several sources including a computer **28**, a 24 hour clock **29**, a calendar **31**, and a condition-control switch **33**. In principle, any compatible electronic device may serve as a source of information, switch **33** serving to represent such devices as relays, alarms, door switches, window switches, accessory and appliance power switches and the like.

Actuation of door operator **14** to move garage door **12** from the open position to the closed position triggers message generator **26** to accept information from one or more of the sources and generate an appropriate display on panel **22**. The display generated may relate to the condition of switch **33**, alerting automobile occupants with messages such as: FRONT DOOR AJAR, ALARM NOT ACTIVE, OVEN ON, etc. Message coordinator **26** may be programmed by the system user to take into account time-of-day and day-of-week inputs from clock **29** and calendar **31**. For example, the system user may program message coordinator **26** to only display home alarm status when a departure from home, as indicated by the closing of garage door **12**, occurs after 5:00 p.m. on weekdays or all day on weekends. Similarly, the system user may program message coordinator **26** with a message importance hierarchy, instructing the sequence in which multiple messages are to be presented. Message coordinator **26** can arrange multiple messages into a queue in accordance with the hierarchy and step through the queue, causing each one to be presented for user-programmed length of time. Alternatively, message coordinator **24** may be programmed to present multiple messages by scrolling them across the display panel.

In a preferred embodiment of the invention, computer **28** consists of a personal computer such as an IBM PC® or the equivalent, and is programmed to execute any of the several commercially available software packages directed toward personal planning and scheduling, such as the calendar/reminder feature present in Wordperfect for Windows® sold by WordPerfect Corporation. These software packages allow a user to store information in a "calendar" format with the aim of providing reminders of planned events. Whenever door operator **14** is actuated to close garage door **12**, messages stored in computer **28** that are appropriate for the particular day and time will be relayed to message coordinator **24** and presented on display panel **22**. Examples of the types of messages/reminders that may be useful are: GARBAGE DAY, MORNING MEETING, MOTHER'S BIRTHDAY, LAST DAY OF THE MONTH, PAY GAS BILL, etc.

If there are no pertinent messages to be displayed on panel **22**, the current time and date as supplied by clock **29** and calendar **31** may be displayed, or the system user may program a default message such as GOODBYE or SECURITY ALARM SET. If the system user desires, a message such as SECURITY ALARM SET may be displayed at all times the garage door is closed to act as a deterrent to would-be thieves.

As described in the aforementioned U.S. Pat. No. 3,825,809, garage door operator **14** includes a reversible electric motor (not shown) to drive garage door **12** between the open and closed positions and limit switches which shut off the electric motor when garage door **12** has reached its fully open or closed positions. The deenergization of the electric motor by the closed position limit switch **15** acts as a trigger to cause message coordinator **24** to generate appropriate messages for display on panel **22**. Alternatively, the energization of the electric motor at the beginning of the downward motion of garage door **12** may serve as the trigger.

In a second embodiment of the present invention, shown schematically in FIG. 3, display panel **22'**, message coordinator **24'**, and garage door operator **14'** are in operative communication with and form part of a network of household devices which together constitute an integrated home automation system (IHAS) **30**. In the IHAS **30** depicted, a central computer **32** is programmed to control the operation of household appliances such as lights **40**, an environmental control system **42** which may include heating and air conditioning units, a home security system **44** which may include intruder and fire detection functions, a telecommunications system **46** which may include a telephone answering machine or voice mail system, and individual appliances such as a coffee maker **48**. As is well known in the home automation field, an IHAS may be configured to permit electronic communication between computer **32** and the devices included in the network by means of the household electrical wiring from which the devices receive electrical power. This eliminates the need for the addition of special wiring in an existing house in which an IHAS is to be installed.

The IHAS operating program contained in and executed by computer **32** will include instructions controlling the display of messages on panel **22'**. A typical set of instructions may be to present information related to the operational status of any of the household devices if such status may indicate an unsafe condition. For example, messages may be presented to alert the departing resident that an electrical appliance such as coffee maker **48** has been left on or that home security system **44** is not functioning properly. These messages give the resident a chance to reenter the house and correct the described condition if he or she so desires.

The basic appliance control functions of computer **32** may be accomplished with a small, microprocessor-based control

Explore Litigation Insights

Docket Alarm provides insights to develop a more informed litigation strategy and the peace of mind of knowing you're on top of things.

Real-Time Litigation Alerts



Keep your litigation team up-to-date with **real-time alerts** and advanced team management tools built for the enterprise, all while greatly reducing PACER spend.

Our comprehensive service means we can handle Federal, State, and Administrative courts across the country.

Advanced Docket Research



With over 230 million records, Docket Alarm's cloud-native docket research platform finds what other services can't. Coverage includes Federal, State, plus PTAB, TTAB, ITC and NLRB decisions, all in one place.

Identify arguments that have been successful in the past with full text, pinpoint searching. Link to case law cited within any court document via Fastcase.

Analytics At Your Fingertips



Learn what happened the last time a particular judge, opposing counsel or company faced cases similar to yours.

Advanced out-of-the-box PTAB and TTAB analytics are always at your fingertips.

API

Docket Alarm offers a powerful API (application programming interface) to developers that want to integrate case filings into their apps.

LAW FIRMS

Build custom dashboards for your attorneys and clients with live data direct from the court.

Automate many repetitive legal tasks like conflict checks, document management, and marketing.

FINANCIAL INSTITUTIONS

Litigation and bankruptcy checks for companies and debtors.

E-DISCOVERY AND LEGAL VENDORS

Sync your system to PACER to automate legal marketing.