



(12) **United States Patent**
Hayes, Jr. et al.

(10) **Patent No.:** **US 6,295,448 B1**
(45) **Date of Patent:** **Sep. 25, 2001**

(54) **SHORT DISTANCE COMMUNICATION AND REMOTE CONTROL CAPABILITY FOR MOBILE TELEPHONES**

(75) Inventors: **John Joseph Hayes, Jr.**, Wake Forest;
Ted Gilbert Ericsson, Cary, both of NC (US)

(73) Assignee: **Telefonaktiebolaget LM Ericsson (publ) (SE)**

(*) Notice: Subject to any disclaimer, the term of this patent is extended or adjusted under 35 U.S.C. 154(b) by 0 days.

(21) Appl. No.: **09/158,025**

(22) Filed: **Sep. 21, 1998**

(51) **Int. Cl.**⁷ **H04M 3/00**; H04Q 7/20; G08C 19/00

(52) **U.S. Cl.** **455/420**; 455/454; 455/556; 340/825.72

(58) **Field of Search** 455/375, 403, 455/414, 462, 415, 420, 450, 454, 550, 552, 553, 556, 151.4; 379/110.01, 38, 102.03, 56.3, 355, 142, 93.23; 240/825.69, 825.72

(56) **References Cited**

U.S. PATENT DOCUMENTS

3,337,992	8/1967	Tolson .	
5,109,222	4/1992	Welty .	
5,138,649	* 8/1992	Krisbergh et al.	455/420
5,201,067	4/1993	Grube et al. .	
5,335,276	8/1994	Thompson et al. .	
5,450,438	* 9/1995	Landry et al.	375/222
5,491,831	2/1996	Williams et al. .	
5,608,778	* 3/1997	Partridge, III 455/411	
5,671,267	* 9/1997	August et al.	1/1
5,739,748	* 4/1998	Flick 340/426	

5,802,467	* 9/1998	Salazar et al.	455/420
5,909,183	* 6/1999	Borgstahl et al.	340/825.22
5,963,624	* 10/1999	Pope	379/110.01
6,061,324	* 5/2000	Arai et al.	369/112
6,061,435	* 5/2000	Grundvig et al.	379/102.03
6,161,005	* 12/2000	Pinzon	455/403
6,195,548	* 2/2001	Schultheiss	455/419
6,223,029	* 4/2001	Stenman et al.	455/420

FOREIGN PATENT DOCUMENTS

09037345	* 2/1997	(JP)	H04Q/7/38
94/01963	* 1/1994	(WO) .	

* cited by examiner

Primary Examiner—Vivian Chang

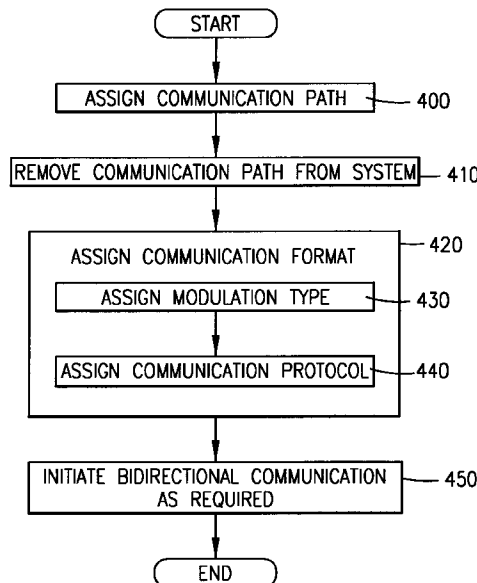
Assistant Examiner—Charles N. Appiah

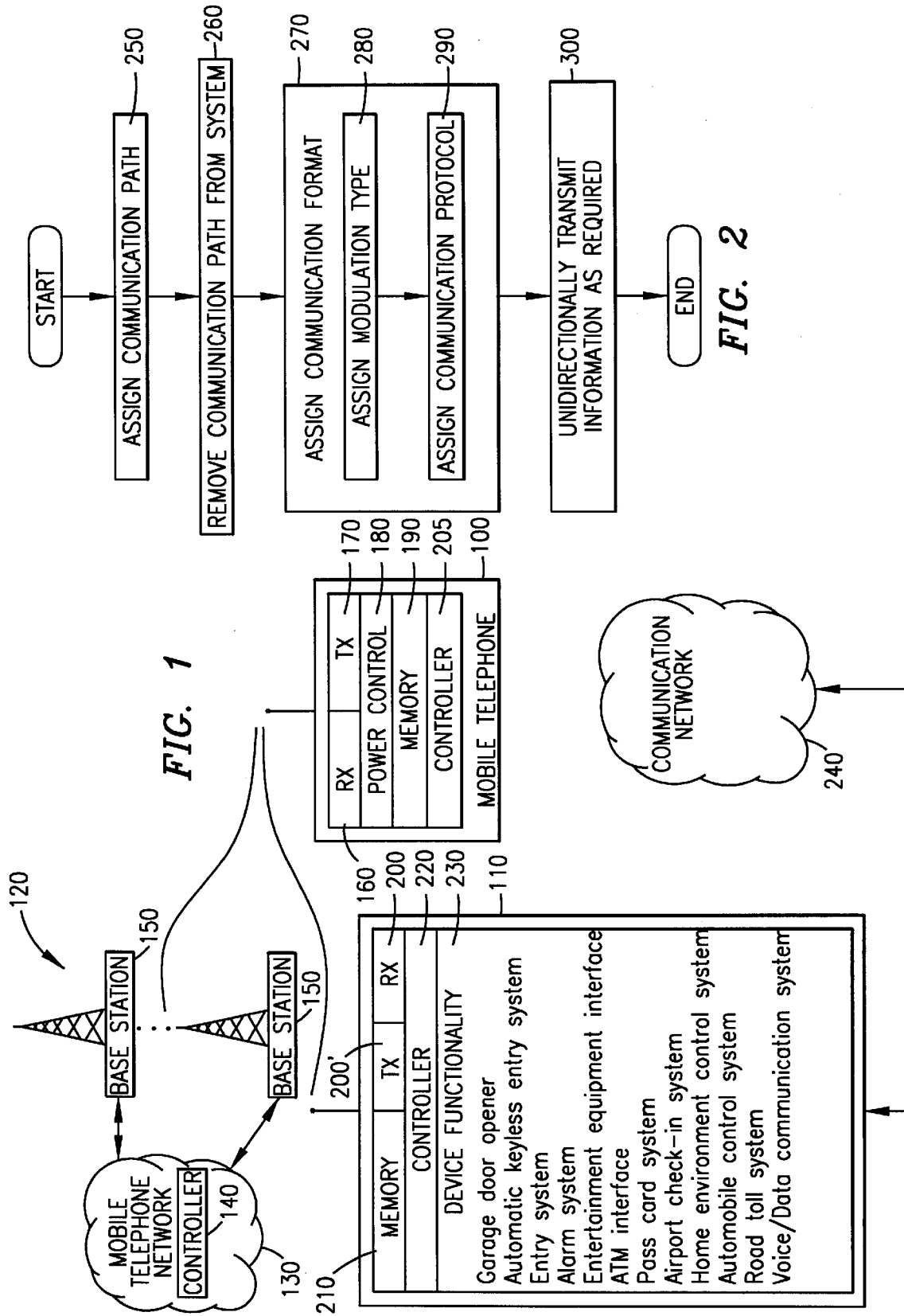
(74) *Attorney, Agent, or Firm*—Jenkins & Gilchrist

(57) **ABSTRACT**

A method and apparatus for effectuating unidirectional and bidirectional communication directly between a mobile telephone and another device without the use of a mobile telephone system to carry the communication. A communication path and a communication format are assigned to the mobile telephone and the device either through a fixed preassignment or dynamically by the mobile telephone system. The communication path constitutes a portion of a radio spectrum assigned to the mobile telephone system, and the communication format includes a modulation type and a communication protocol. The communication path is removed from a set of communication paths allocated for use by the mobile telephone system and the communication path and communication format are stored in separate memories located in the mobile telephone and the device. Controllers located within the mobile telephone and the device initiate communication directly between the mobile telephone and the other device on the assigned communication path using the assigned communication format.

21 Claims, 4 Drawing Sheets





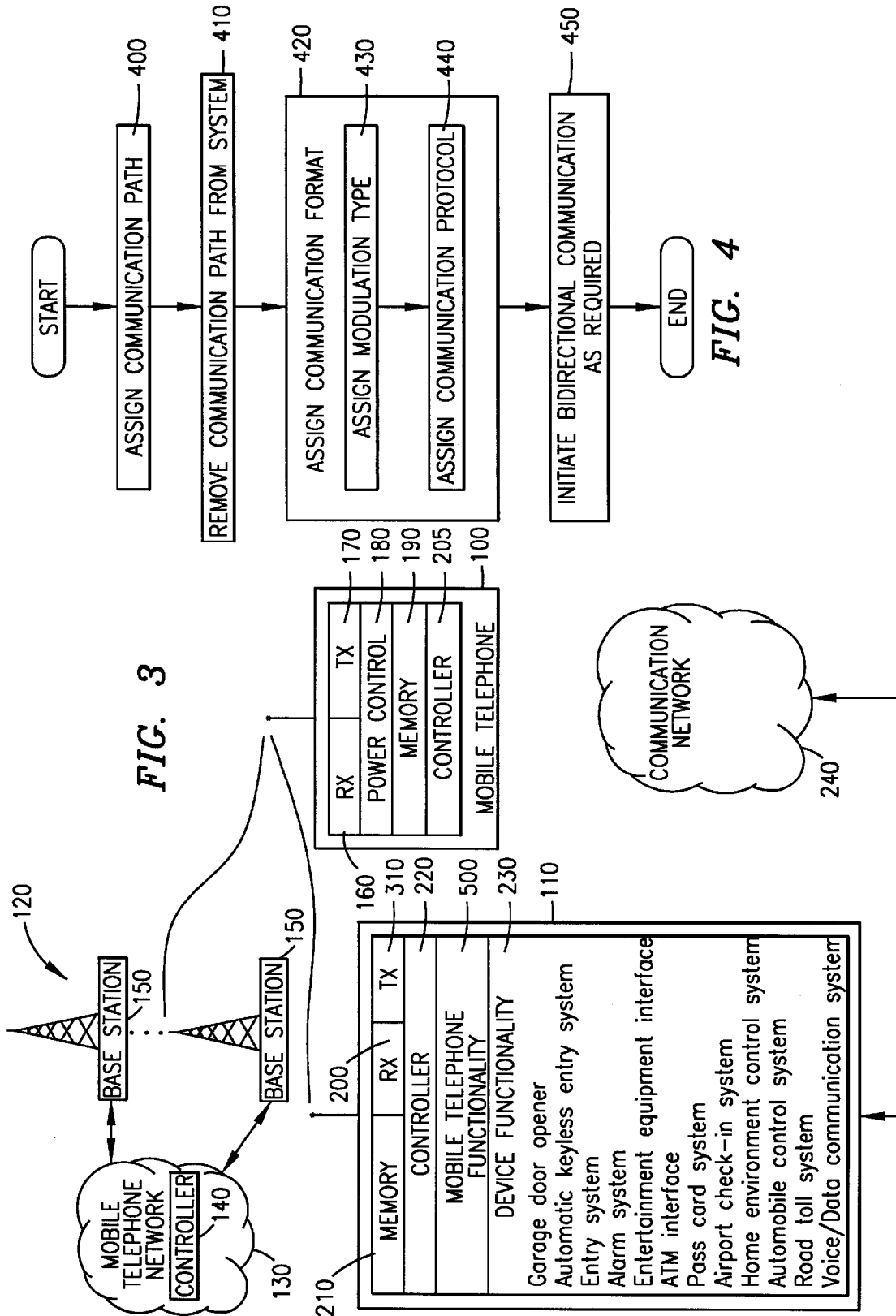


FIG. 3

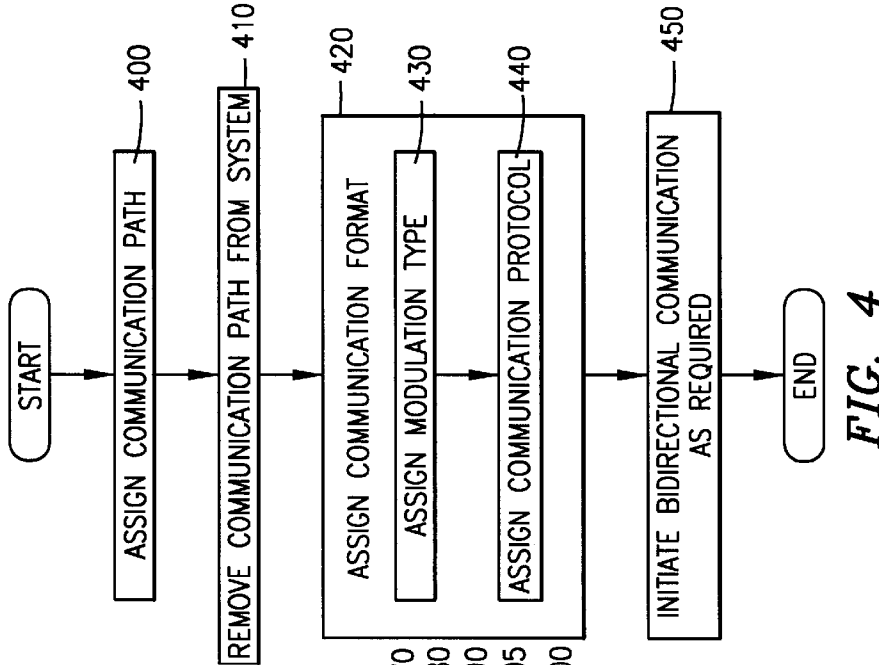


FIG. 4

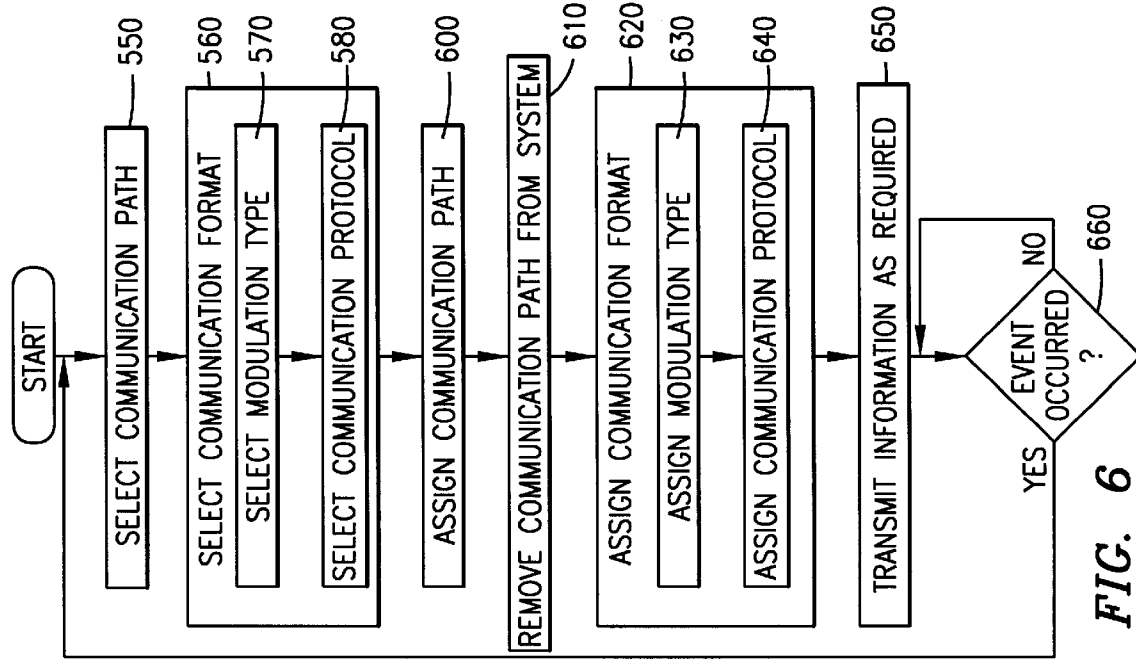


FIG. 6

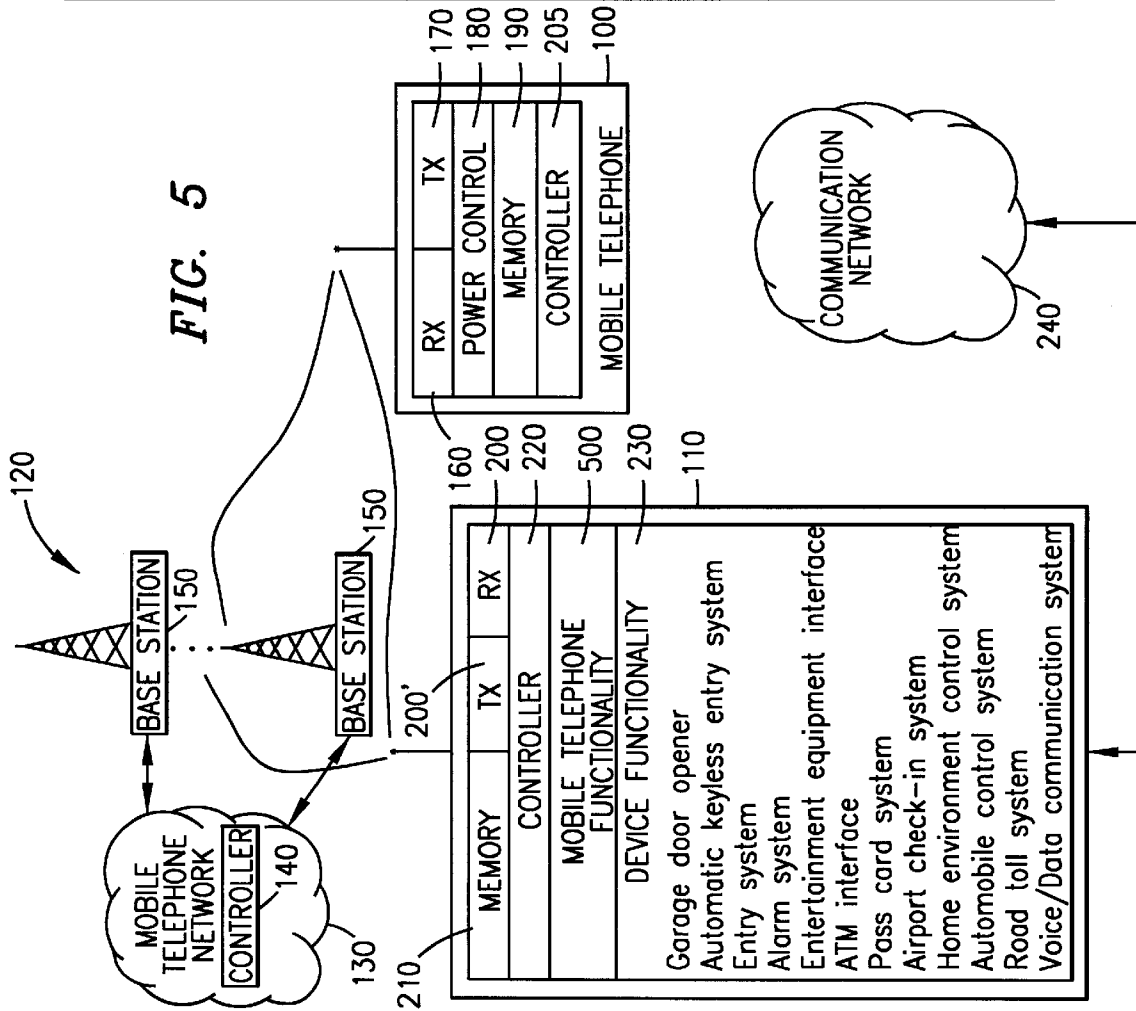


FIG. 5

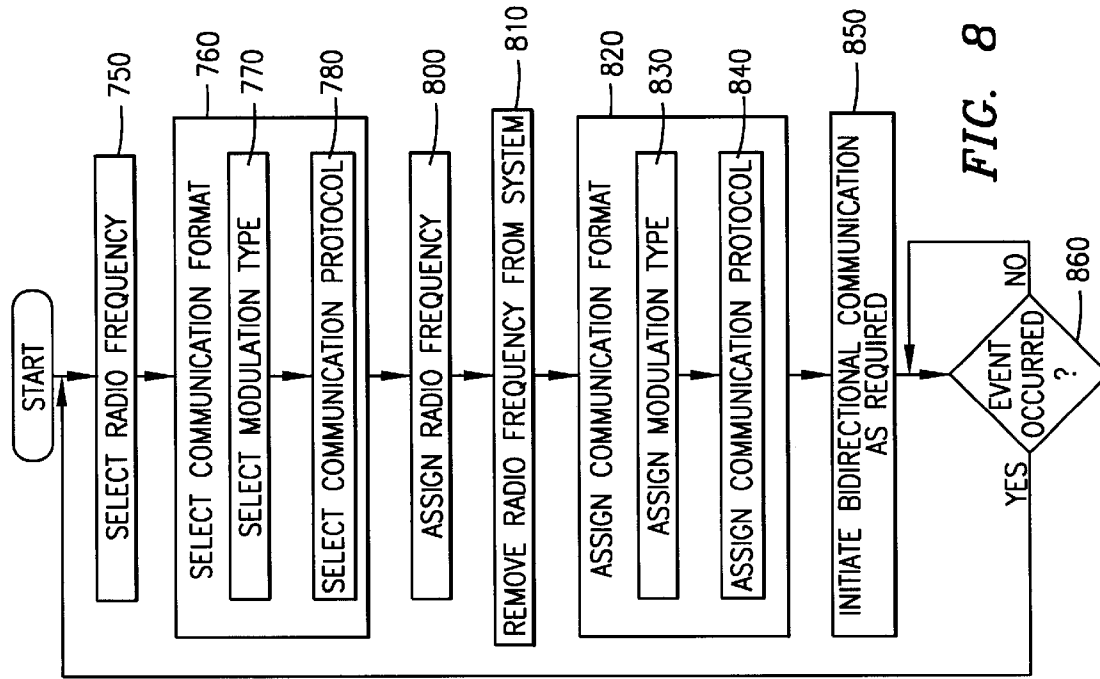


FIG. 8

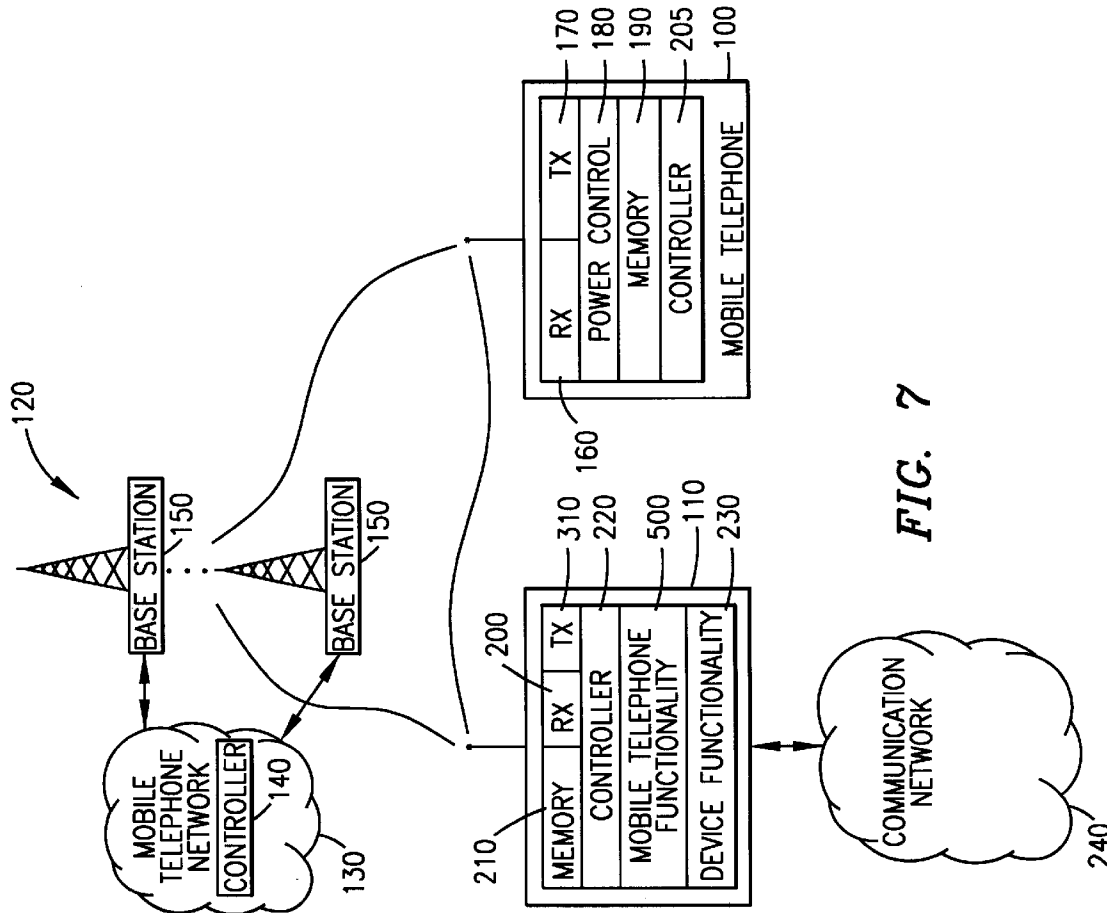


FIG. 7

Explore Litigation Insights

Docket Alarm provides insights to develop a more informed litigation strategy and the peace of mind of knowing you're on top of things.

Real-Time Litigation Alerts



Keep your litigation team up-to-date with **real-time alerts** and advanced team management tools built for the enterprise, all while greatly reducing PACER spend.

Our comprehensive service means we can handle Federal, State, and Administrative courts across the country.

Advanced Docket Research



With over 230 million records, Docket Alarm's cloud-native docket research platform finds what other services can't. Coverage includes Federal, State, plus PTAB, TTAB, ITC and NLRB decisions, all in one place.

Identify arguments that have been successful in the past with full text, pinpoint searching. Link to case law cited within any court document via Fastcase.

Analytics At Your Fingertips



Learn what happened the last time a particular judge, opposing counsel or company faced cases similar to yours.

Advanced out-of-the-box PTAB and TTAB analytics are always at your fingertips.

API

Docket Alarm offers a powerful API (application programming interface) to developers that want to integrate case filings into their apps.

LAW FIRMS

Build custom dashboards for your attorneys and clients with live data direct from the court.

Automate many repetitive legal tasks like conflict checks, document management, and marketing.

FINANCIAL INSTITUTIONS

Litigation and bankruptcy checks for companies and debtors.

E-DISCOVERY AND LEGAL VENDORS

Sync your system to PACER to automate legal marketing.