

(12) **United States Patent**
Moore et al.

(10) **Patent No.:** **US 6,577,855 B1**
 (45) **Date of Patent:** **Jun. 10, 2003**

(54) **LOW IF RECEIVER**

(75) Inventors: **Paul A. Moore**, Seaford (GB); **Michael E. Barnard**, Redhill (GB); **Astrid Paula Maria Schweer**, Nürnberg (DE)

(73) Assignee: **U.S. Philips Corporation**, New York, NY (US)

(*) Notice: Subject to any disclaimer, the term of this patent is extended or adjusted under 35 U.S.C. 154(b) by 0 days.

(21) Appl. No.: **09/377,357**

(22) Filed: **Aug. 19, 1999**

(30) **Foreign Application Priority Data**

Aug. 25, 1998 (GB) 9818397

(51) **Int. Cl.⁷** **H04B 1/26**

(52) **U.S. Cl.** **455/324; 455/303**

(58) **Field of Search** 455/303, 324, 455/255, 257-259, 265, 192.1, 192.2, 302; 348/235

(56) **References Cited**

U.S. PATENT DOCUMENTS

5,003,621	A *	3/1991	Gailus	455/209
5,398,080	A *	3/1995	Sakashita et al.	348/735
5,548,619	A *	8/1996	Horiike et al.	375/344
5,584,068	A *	12/1996	Mohindra	455/324
5,715,529	A *	2/1998	Kianush et al.	455/266
6,148,181	A *	11/2000	Otaka	455/86

OTHER PUBLICATIONS

By RF Design, Rod Green & Richard Hosking, "High Performance Direct Conversion" *Electronic World*, Jan. 1996, pp. 18-22.

* cited by examiner

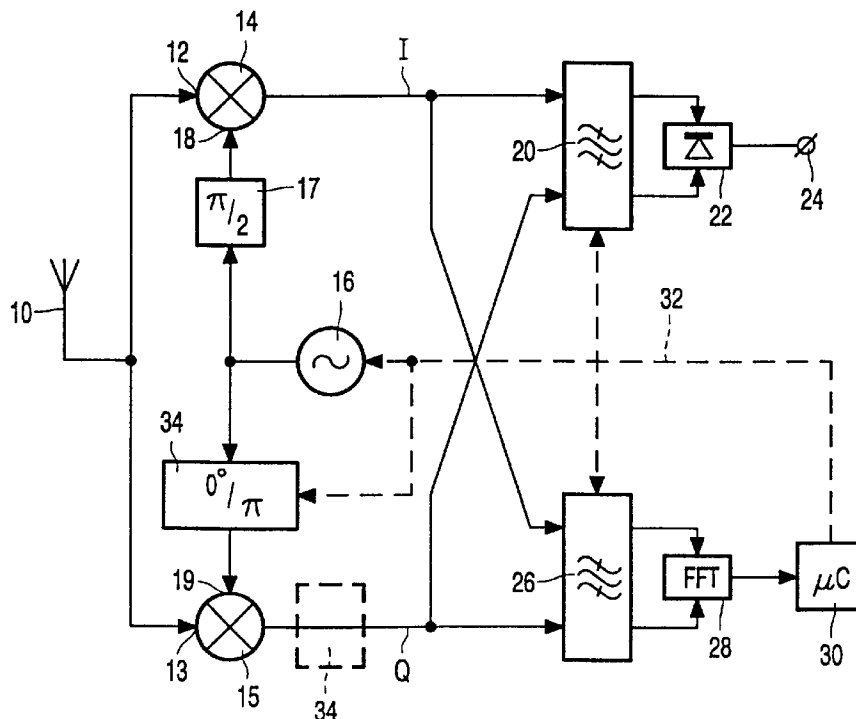
Primary Examiner—Nguyen T. Vo

Assistant Examiner—Nghị H. Ly

(57) **ABSTRACT**

A low IF receiver suitable for use in cellular and cordless telephones and TV tuners, comprises input signal receiving means(10), quadrature related frequency down conversion means including first and second mixing means(14, 15) having first inputs(12, 13) coupled to the input signal receiving means and a local oscillator means(16) for generating a local oscillator signal having a frequency offset from a nominal centre frequency of the input signal coupled to second inputs(18, 19) of the first and second mixing means, a channel selectivity polyphase filtering means(20) for selecting a wanted channel signal from outputs of the first and second mixing means, means(26, 28, 30) for detecting when the quality of the frequency down converted signal becomes unacceptable due a large adjacent channel interfering component and means responsive to said detection for changing the local oscillator frequency by at least twice the low IF or one channel bandwidth to displace the large interfering component outside the bandwidth of the channel selectivity polyphase filtering means(20) and simultaneously changing the centre frequency of the polyphase filter.

11 Claims, 4 Drawing Sheets



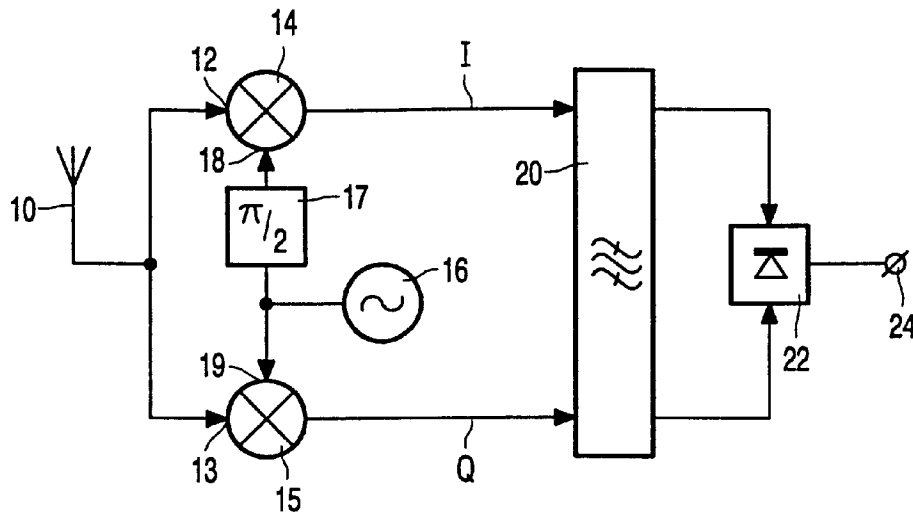


FIG. 1

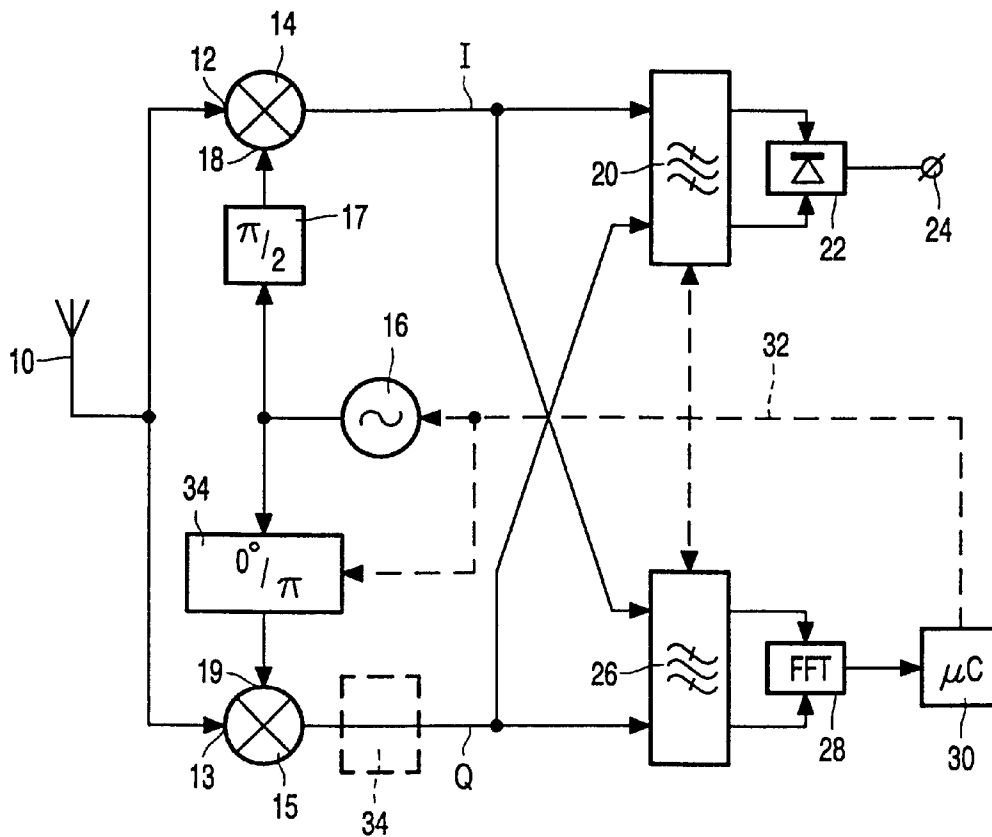


FIG. 2

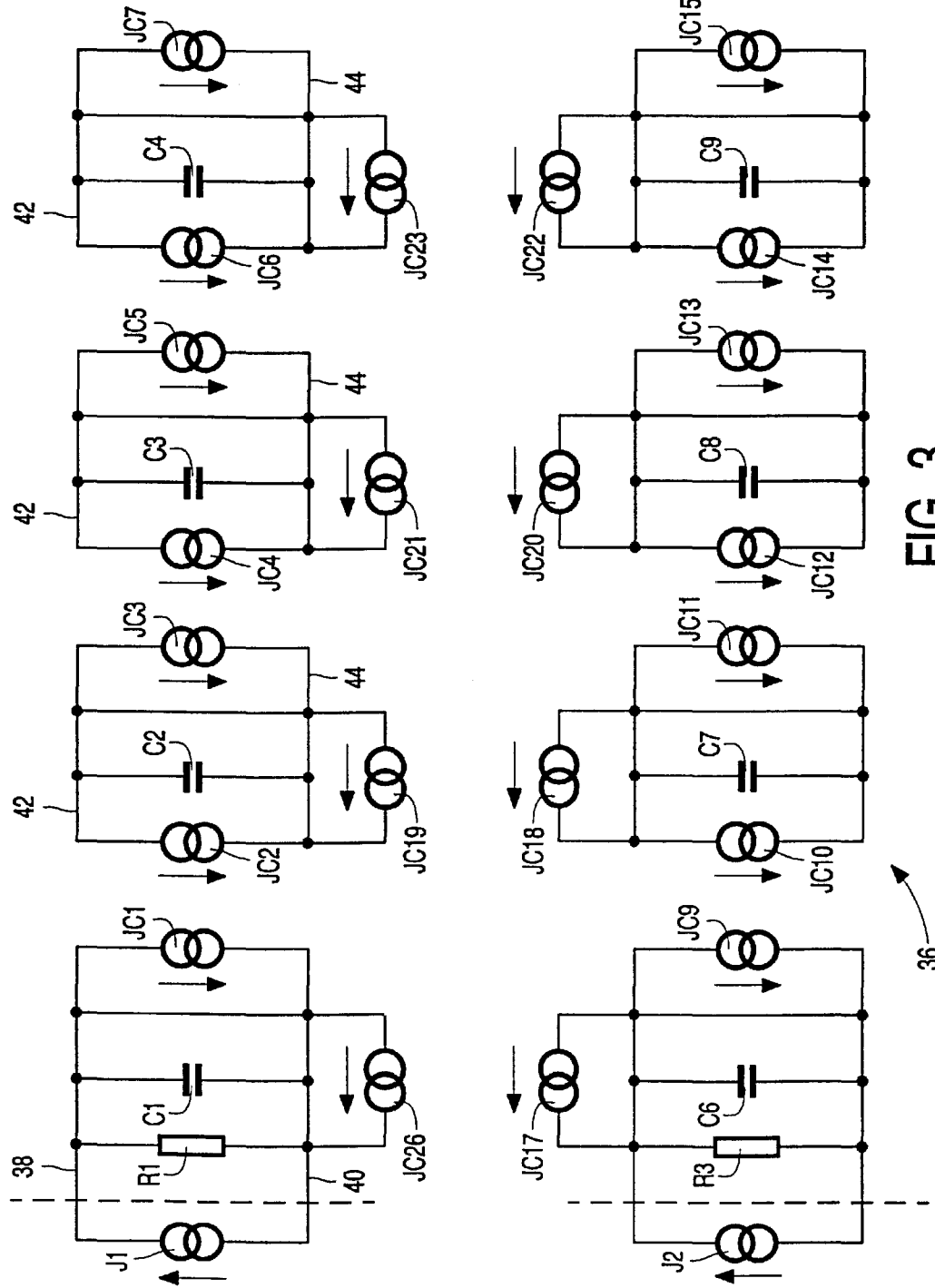


FIG. 3

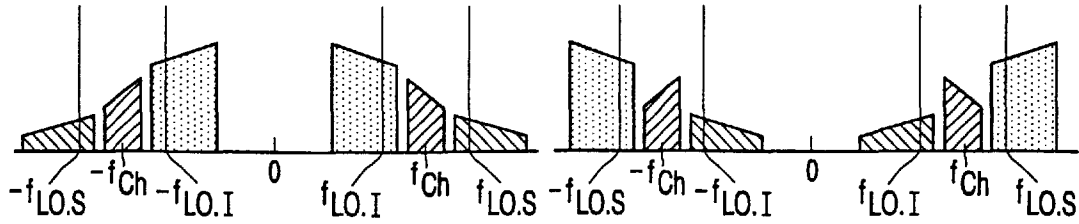


FIG. 4A

FIG. 4B

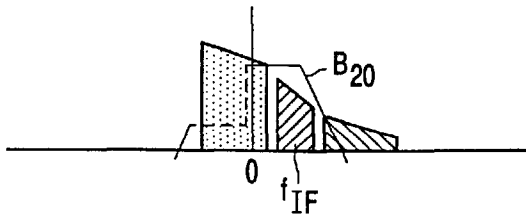


FIG. 5A

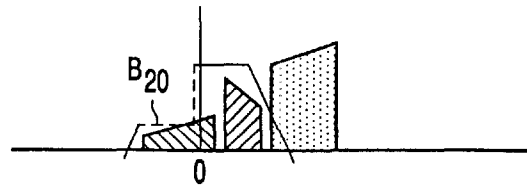


FIG. 5B

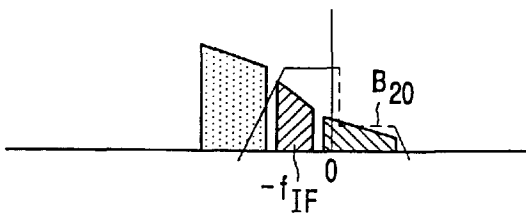


FIG. 6A

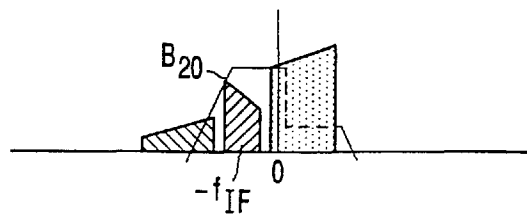


FIG. 6B

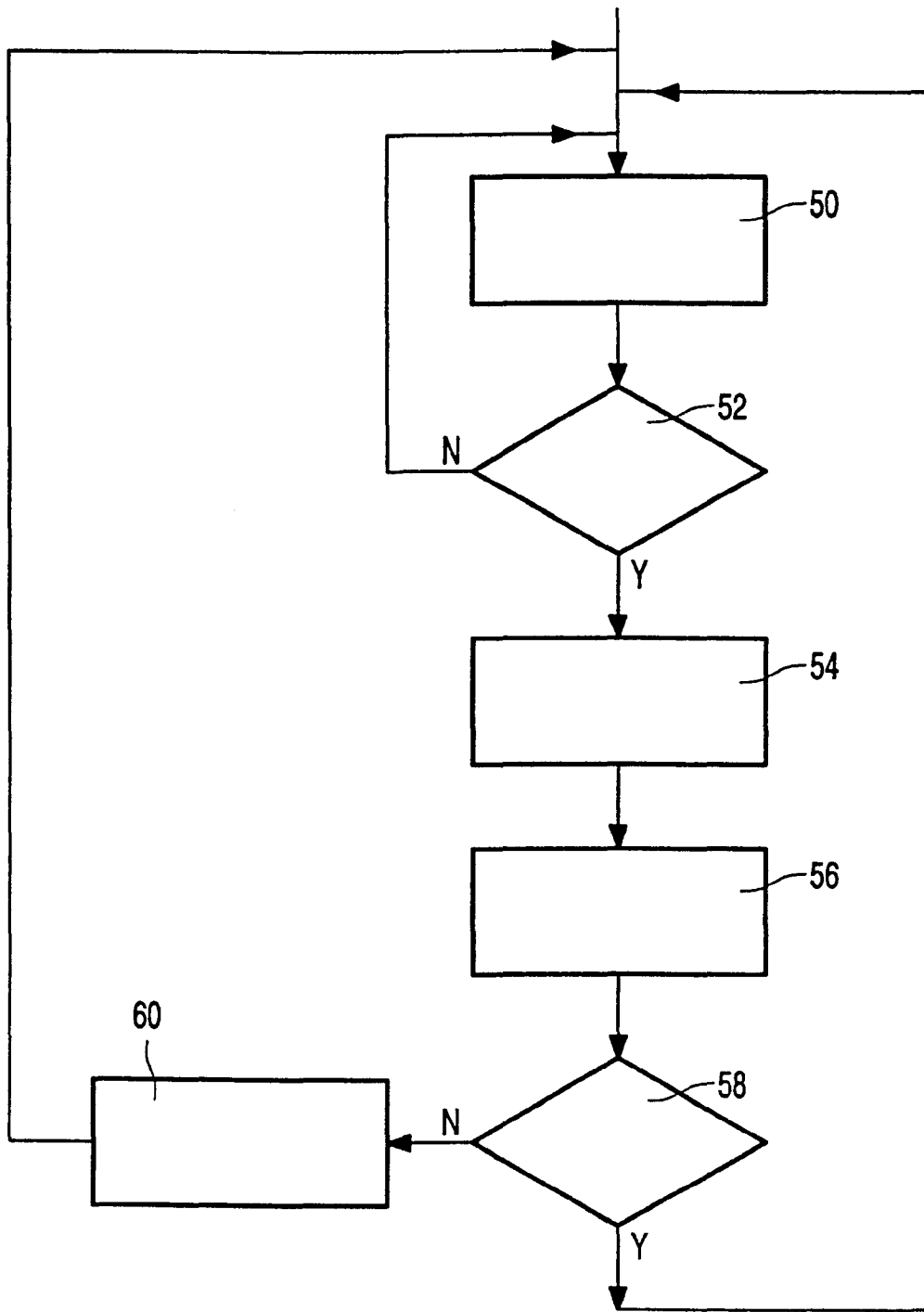


FIG. 7

Explore Litigation Insights

Docket Alarm provides insights to develop a more informed litigation strategy and the peace of mind of knowing you're on top of things.

Real-Time Litigation Alerts



Keep your litigation team up-to-date with **real-time alerts** and advanced team management tools built for the enterprise, all while greatly reducing PACER spend.

Our comprehensive service means we can handle Federal, State, and Administrative courts across the country.

Advanced Docket Research



With over 230 million records, Docket Alarm's cloud-native docket research platform finds what other services can't. Coverage includes Federal, State, plus PTAB, TTAB, ITC and NLRB decisions, all in one place.

Identify arguments that have been successful in the past with full text, pinpoint searching. Link to case law cited within any court document via Fastcase.

Analytics At Your Fingertips



Learn what happened the last time a particular judge, opposing counsel or company faced cases similar to yours.

Advanced out-of-the-box PTAB and TTAB analytics are always at your fingertips.

API

Docket Alarm offers a powerful API (application programming interface) to developers that want to integrate case filings into their apps.

LAW FIRMS

Build custom dashboards for your attorneys and clients with live data direct from the court.

Automate many repetitive legal tasks like conflict checks, document management, and marketing.

FINANCIAL INSTITUTIONS

Litigation and bankruptcy checks for companies and debtors.

E-DISCOVERY AND LEGAL VENDORS

Sync your system to PACER to automate legal marketing.