

# REVIEWS IN BASIC AND CLINICAL GASTROENTEROLOGY AND HEPATOLOGY

Douglas J. Robertson and Vincent W. Yang, Section Editors

## Mechanisms, Evaluation, and Management of Chronic Constipation



Adil E. Bharucha<sup>1</sup> and Brian E. Lacy<sup>2</sup>

<sup>1</sup>Division of Gastroenterology and Hepatology, Mayo Clinic, Rochester, Minnesota and <sup>2</sup>Division of Gastroenterology and Hepatology, Mayo Clinic, Jacksonville, Florida

With a worldwide prevalence of 15%, chronic constipation is one of the most frequent gastrointestinal diagnoses made in ambulatory medicine clinics, and is a common source cause for referrals to gastroenterologists and colorectal surgeons in the United States. Symptoms vary among patients; straining, incomplete evacuation, and a sense of anorectal blockage are just as important as decreased stool frequency. Chronic constipation is either a primary disorder (such as normal transit, slow transit, or defecatory disorders) or a secondary one (due to medications or, in rare cases, anatomic alterations). Colonic sensorimotor disturbances and pelvic floor dysfunction (such as defecatory disorders) are the most widely recognized pathogenic mechanisms. Guided by efficacy and cost, management of constipation should begin with dietary fiber supplementation and stimulant and/or osmotic laxatives, as appropriate, followed, if necessary, by intestinal secretagogues and/or prokinetic agents. Peripherally acting  $\mu$ -opioid antagonists are another option for opioid-induced constipation. Anorectal tests to evaluate for defecatory disorders should be performed in patients who do not respond to over-the-counter agents. Colonic transit, followed if necessary with assessment of colonic motility with manometry and/or a barostat, can identify colonic dysmotility. Defecatory disorders often respond to biofeedback therapy. For specific patients, slow-transit constipation may necessitate a colectomy. No studies have compared inexpensive laxatives with newer drugs with different mechanisms. We review the mechanisms, evaluation, and management of chronic constipation. We discuss the importance of meticulous analyses of patient history and physical examination, advantages and disadvantages of diagnostic testing, guidance for individualized treatment, and management of medically refractory patients.

The prevalence of chronic constipation (CC) among adults is approximately 15%, making it the sixth most common gastrointestinal symptom. CC often results in visits to ambulatory clinics and gastroenterology referrals.<sup>1–3</sup> Although the prevalence is greater in non-Caucasians than Caucasians, in women (median female to male ratio of 1.5:1), and in institutionalized rather than community-living elderly persons, symptoms can affect all ages, races, socioeconomic groups, and nationalities.

### Definition and Classification

Chronic constipation is either primary or secondary (attributed to another disease), determined from patient

history and results from examinations and laboratory tests (Table 1).<sup>4</sup> The Rome IV criteria for primary constipation are based on results from anorectal tests and categorize patients as having functional constipation (FC), constipation-predominant irritable bowel syndrome (IBS-C), or defecatory disorders (DDs) (Supplementary Figure 1).<sup>5</sup> FC and IBS-C are primarily defined by symptoms alone (Table 2). DDs are defined by symptoms (such as FC or IBS-C) and results from anorectal tests that indicate impaired rectal evacuation. Prior American Gastroenterological Association reviews and this update classify patients with constipation based on assessments of colonic transit and anorectal function; the classifications are normal transit constipation (NTC), slow transit constipation (STC), and pelvic floor dysfunction or DDs (Supplementary Figure 1).<sup>4,6</sup>

Patients with constipation have infrequent stools (fewer than 3 bowel movements per week) and, more importantly, straining at stool, a feeling of incomplete evacuation, a need for digital assistance to evacuate stool, bloating, and hard or lumpy stools.<sup>7</sup> The Rome IV criteria are predominantly symptom-based and as such require that patients with a diagnosis of FC have 2 or more of these symptoms, which affect >25% of bowel movements for at least 6 months and active symptoms for the past 3 months (Table 1). By contrast, IBS-C is defined by abdominal pain that is associated with 2 of 3 features: altered stool form, altered stool frequency, or relief of abdominal pain with defecation. Although patients with CC also have abdominal pain, the pain is not, in contrast to the definition for IBS-C, associated with the symptoms mentioned. In (real-world) clinical practice, it is more useful to conceptualize FC and IBS-C along a spectrum; it is sometimes difficult to distinguish FC from IBS-C and to determine which patients are true

**Abbreviations used in this paper:** BET, balloon expulsion test; CC, chronic constipation; DD, defecatory disorder; DRE, digital rectal examination; FC, functional constipation; FDA, US Food and Drug Administration; HAPC, high-amplitude propagated contraction; HRM, high-resolution anorectal manometry; IBS, irritable bowel syndrome; IBS-C, constipation-predominant irritable bowel syndrome; MR, magnetic resonance; NTC, normal transit constipation; PEG, polyethylene glycol; STC, slow transit constipation.

Most current article

© 2020 by the AGA Institute  
0016-5085/\$36.00

<https://doi.org/10.1053/j.gastro.2019.12.034>

**Table 1.** Common Medical Conditions Associated With Constipation

Cause	Comments
Drug effects	See <a href="#">Supplementary Table 1</a>
Mechanical obstruction: colon cancer, external compression from malignant lesion, strictures (diverticular or post ischemic), rectocele (if large), megacolon, anal fissure	Often associated with alarm clinical features or laboratory tests, apparent on digital rectal examination (fissure) or x-ray image of the abdomen, or preceded by the primary event (diverticulitis)
Metabolic conditions: diabetes mellitus, hypothyroidism, hypercalcemia, hypokalemia, hypomagnesemia, uremia, heavy metal poisoning, uremia, heavy metal poisoning	All are associated with/can be diagnosed by abnormal results from laboratory tests, which should be performed only when there is a high index of suspicion (such as in patients on diuretics)
Myopathies: amyloidosis, scleroderma	Typically associated with other clinical features of these conditions
Neuropathies: Parkinson’s disease, spinal cord injury or tumor, cerebrovascular disease, and multiple sclerosis	Constipation, either due to slow colon transit and/or DD, is common in patients with these disorders, which have many other features
Other conditions: depression, degenerative joint disease, autonomic neuropathy, cognitive impairment, immobility, cardiac disease	The disorder and/or medications may contribute to constipation

medication responders using the definitions used in clinical trials (see [Table 2](#)). IBS-C patients are more likely to predominantly have abdominal pain, heightened rectal sensation,<sup>8</sup> upper gastrointestinal symptoms (eg, heartburn, dyspepsia), anxiety and depression, and urinary symptoms.<sup>9,10</sup> However, blurring the distinction between FC and IBS-C, 1 study found that approximately 90% of patients with IBS-C also met criteria for FC and 44% of the FC patients also met criteria for IBS-C.<sup>11</sup> In approximately one-third of patients, symptoms shift over time between FC and IBS-C.<sup>11</sup> In individual patients, a diagnosis of either FC or IBS-C is possible only because the Rome criteria specify that patients with symptoms of IBS-C and FC be designated as IBS-C not FC.

This limitation can be overcome by classifying constipated patients, based on the presence or absence of moderate to severe abdominal pain, into 1 of 2 categories, such as painful or painless constipation ([Supplementary Figure 2](#)).<sup>9,10</sup> In contrast to the Rome IV criteria for IBS-C, these definitions do not specify the temporal relationship, or lack thereof, between abdominal pain and bowel habits. Similar to the differences for FC and IBS-C, compared to mild pain constipation, patients with painful constipation have more prominent bowel, upper gastrointestinal (such as dyspepsia), anorectal, urinary and sexual symptoms, anxiety and depression, and slower rectosigmoid transit. The widespread symptoms in painful constipation could partly reflect increased perception of visceral sensations. Symptom-based criteria for discriminating between painful and mild-pain constipation have been proposed but require finalization.

**Physiology of Colonic Motor Functions**

The right colon is a reservoir that mixes and stores contents.<sup>12-14</sup> The left colon functions primarily as a conduit. The rectum and anal canal enable defecation and maintain fecal continence. Our understanding of motor activity, which is derived mostly from studies with non-high-resolution manometry catheters in which sensors were separated by 7.5 cm or more,<sup>13</sup> suggest that most colonic motor activity is irregular and nonpropagated and serves to

segment and mix intraluminal contents. By comparison, newer high-resolution catheters have sensors separated by 1–2.5 cm and are more accurate for detecting propagated motor events ([Supplementary Figure 3](#)).<sup>15</sup> Colonic motor patterns are diverse, and include individual or rhythmic events, which may be simultaneous or propagated (antegrade or retrograde), and have low or high amplitude.<sup>13</sup> Of these patterns, the gastrocolonic response to a meal and high-amplitude propagated contractions are arguably the most physiologically important. The gastrocolonic response begins shortly, often within a few seconds, after eating and may last for up to 2<sup>1</sup>/<sub>2</sub> hours.<sup>16</sup> Although a 1000-kcal meal invariably elicits a response, 600 kcal is probably equivalent.<sup>17</sup> Propagated contractions, categorized as low (5–40 mmHg) or high-amplitude propagated contractions (HAPCs, >75 mmHg), occur an average of 6 times per day, originate predominantly in the cecum or ascending colon, cause mass movement of colon contents, and often precede defecation.<sup>18</sup> HAPCs occur more frequently after awakening and after meals and can account for the urge to defecate in healthy subjects and in patients with IBS. HAPCs occur spontaneously, occasionally in response to luminal distention, or can be induced by glycerol, bisacodyl, oleic acid, and the cholinesterase inhibitor neostigmine.

**Pathophysiology**

Colonic sensorimotor disturbances and pelvic floor dysfunction are the most widely recognized causes. Other factors, such as reduced caloric intake, disturbances of the microbiome, anatomical issues, or medications, can also contribute.

*Colonic Sensorimotor Dysfunctions and the Microbiome*

Isolated slow-transit constipation (eg, no DD) is used as a marker of colonic motor dysfunction(s), perhaps due to reductions in colonic intrinsic nerves and interstitial cells of Cajal.<sup>19,20</sup> Manometry can reveal colonic motor disturbances, such as reduced propagated and nonpropagated activity and reduced phasic contractile responses to a meal

Table 2. Definitions of Constipation

Rome IV criteria		Criteria used in studies of pharmacologic agents	
FC	IBS-C	FC <sup>169</sup>	IBS-C <sup>170</sup>
<p>Symptoms for <math>\geq 6</math> mo and 2 or more of the following symptoms for <math>&gt;25\%</math> of defecations during past 3 mo:</p> <ul style="list-style-type: none"> <li>o Straining</li> <li>o Lumpy or hard stools</li> <li>o Sensation of incomplete evacuation</li> <li>o Sensation of anorectal obstruction/blockade</li> <li>o Manual maneuvers to facilitate defecations;</li> <li>o <math>&lt;3</math> defecations/wk</li> <li>o Loose stools are not present, and there are insufficient criteria for IBS</li> </ul>	<p>Recurrent abdominal pain at least 1 d/wk in the past 3 mo associated with 2 or more of the following:</p> <ul style="list-style-type: none"> <li>o Related to defecation</li> <li>o Onset associated with change in frequency of stool</li> <li>o Onset associated with change in form (appearance) of stool</li> <li>o <math>&gt;25\%</math> of bowel movements were hard and <math>&lt;25\%</math> were loose stools</li> </ul>	<p><math>&lt;3</math> SBMs/wk and 1 or more of the following symptoms for at least 12 wk during the preceding 12 mo</p> <ul style="list-style-type: none"> <li>o Straining in <math>&gt;25\%</math> of defecations</li> <li>o Lumpy or hard stools in <math>&gt;25\%</math> of defecations</li> <li>o Sensation of incomplete evacuation in <math>&gt;25\%</math> of defecations</li> <li>o No loose or watery SBMs (Bristol Stool Form Scale scores of 6 or 7)</li> </ul>	<p>Abdominal pain associated with 2 or more of the following:</p> <ul style="list-style-type: none"> <li>o Related to defecation</li> <li>o Onset associated with change in frequency of stool</li> <li>o Onset associated with change in form and (appearance) of stool</li> <li>o <math>&lt;3</math> SBMs and <math>&lt;3</math> CSBMs/wk; and at least 1 additional symptom</li> <li>o Straining in <math>\geq 25\%</math> of defecations</li> <li>o Lumpy or hard stools in <math>\geq 25\%</math> of defecations</li> <li>o Sensation of incomplete evacuation in <math>\geq 25\%</math> of defecations</li> </ul>

CSBM, complete spontaneous bowel movements; SBM, spontaneous bowel movement.

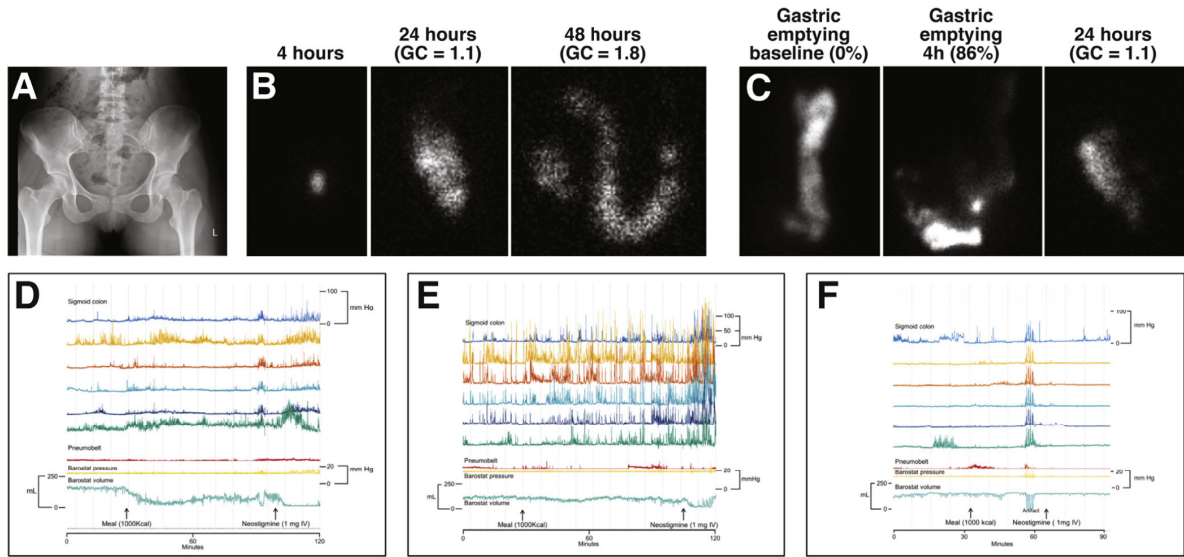
and/or to bisacodyl or neostigmine, in patients with STC.<sup>21–23</sup> Manometry catheters only measure phasic pressure activity. A barostat balloon device also records colonic tone; fasting tone and tonic contractile responses to a meal and/or neostigmine are reduced in STC (Figure 1).<sup>21–23</sup> Colonic inertia, which represents profound motor dysfunction, can only be identified by manometry or a barostat and is defined by reduced or absent contractile response to a meal and to pharmacologic stimuli (such as bisacodyl or neostigmine).<sup>23,24</sup>

Unfortunately, NTC and STC are imperfect markers of normal and impaired colonic motor function, respectively. For example, fasting and/or postprandial colonic tone and/or compliance were reduced in 40% of patients with NTC, 47% in patients with STC, 53% in patients with DD and normal transit, and 42% in patients with DD and slow transit.<sup>23</sup> Similarly, 43% of patients with STC had normal fasting colonic motility and motor responses to a meal and bisacodyl.<sup>25</sup> Patients with NTC might have symptoms of FC or IBS-C; 23% of patients with FC or IBS-C had delayed colonic transit.<sup>26,27</sup> Some patients have increased perception of rapid distention and reduced perception of slow distention.<sup>28</sup> Increased rectal sensitivity is associated with abdominal pain and bloating, suggestive of IBS.<sup>29–31</sup>

Germ-free mice colonized with the fecal microbiome from patients with constipation developed slow colonic transit.<sup>32,33</sup> Slow colon transit correlates inversely with colonic serotonin content, associates with a decreased relative abundance of Firmicutes and increased Bacteroidetes, and associates with altered fecal content of short-chain fatty acids and bile acids.<sup>32</sup> In humans, CC is associated with alterations in colonic mucosal microbiota, especially more plentiful phylum Bacteroidetes, resulting from a greater abundance of Flavobacterium.<sup>34</sup> Adjusted for colonic transit, the colonic mucosal microbiome discriminated patients with constipation from controls with 94% accuracy, even after adjusting for diet and colonic transit. By contrast, fecal microbiomes were associated with colonic transit and increased methane in breath samples, but not with constipation.

### Defecatory Disorders

DDs (also called functional outlet obstruction, anorectal dyssynergia, or pelvic floor dysfunction) are caused by reduced rectal propulsive forces and/or increased resistance to evacuation (Figure 2).<sup>35</sup> Increased resistance results from high anal resting pressure (anismus) or paradoxical contraction or incomplete relaxation<sup>36</sup> of the pelvic floor and external anal sphincters (dyssynergia).<sup>37</sup> These patterns are not associated with specific clinical patterns or the response to pelvic floor retraining.<sup>38</sup> DDs primarily develop via maladaptive pelvic floor contraction during defecation.<sup>39</sup> Other abnormalities, especially reduced rectal sensation and structural deformities (such as rectoceles and excessive perineal descent), can coexist and be primary or secondary to constipation.<sup>14,40–44</sup> Reduced rectal sensation could reduce desire to defecate<sup>40,45</sup>; as many as 50% of patients with



**Figure 1.** Patterns of colonic motor dysfunctions in patients with CC. The pronounced reduction in sigmoid colonic balloon volume indicates a normal tonic response to a meal (D) in a patient with excess colonic stool burden (A). Anorectal tests (not shown) identified a DD. During scintigraphy, colonic transit is usually measured using an isotope<sup>111</sup> coated with a pH-sensitive methacrylate that dissolves in the terminal ileum. In (B), the isotope is in an intact capsule (left) observed in the ascending colon at 24 hours (center panel) and then in the transverse colon at 48 hours (right panel). The geometric center (GC), which is the weighted distribution of the isotope throughout the colon, indicates slow colon transit; normal values are 1.4–3.6 at 24 hours and 2.1–4.9 at 48 hours. In this patient, the colonic manometry (E) depicts considerable phasic pressure activity during the fasting period, increased phasic activity after a meal, and more so after intravenous neostigmine. However, the tonic contractile response to the meal was reduced. (C) shows a patient with delayed colonic transit with normal gastric emptying. In this patient, the colonic manometry (F) reveals sparse phasic pressure activity and tonic or phasic contractile responses to a meal.

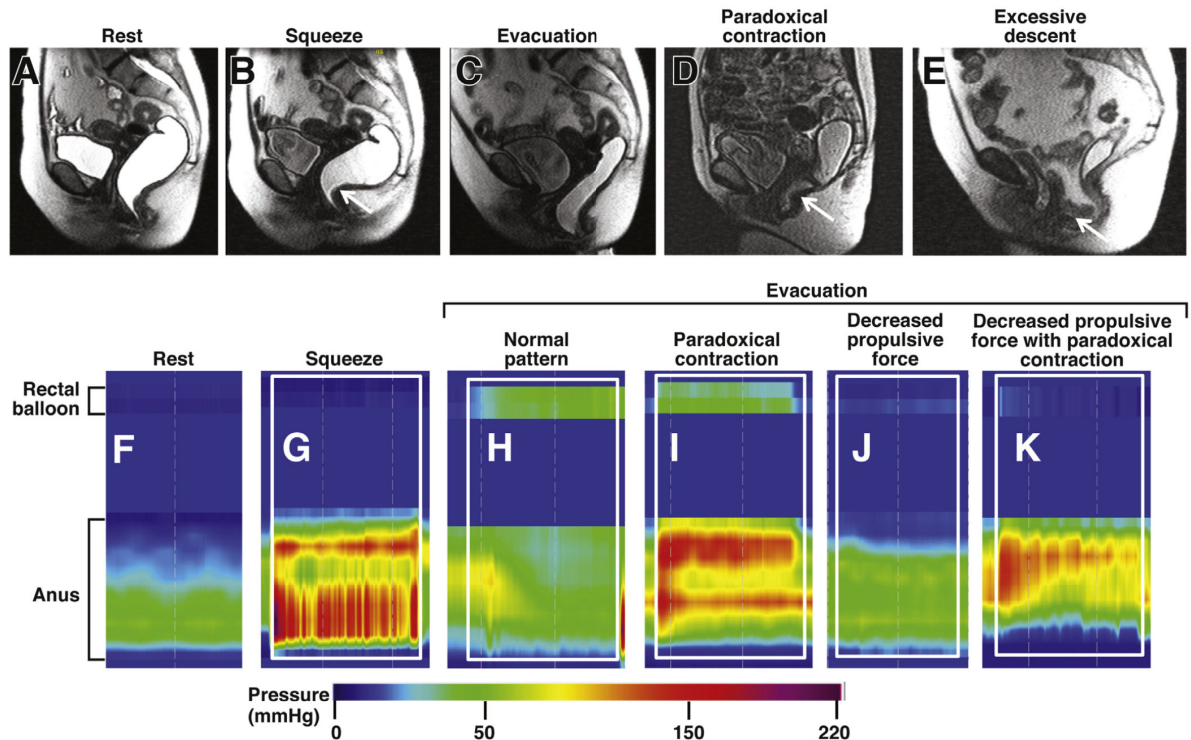
constipation have delayed colonic transit.<sup>23,37,46</sup> Beside colonic motor dysfunction unrelated to DD,<sup>22</sup> retained stool can physically obstruct passage of contents or evoke rectocolonic inhibitory reflexes.<sup>47</sup> Over time, excessive straining can weaken the pelvic floor, increasing risk for excessive perineal descent, rectal intussusception, solitary rectal ulcer syndrome, and pudendal neuropathy. Pudendal neuropathy can weaken anal sphincters, increasing risk for fecal incontinence.<sup>45,48–50</sup>

The precise contribution of dyssynergia to impaired evacuation is unclear because dyssynergia has been reported in asymptomatic people as well as patients with rectal pain.<sup>38,51,52</sup> This might be because it is a challenge to simulate defecation in the laboratory. When dyssynergia and structural abnormalities (such as large rectoceles) overlap, it is difficult to determine the contributions of each to the symptoms (Figure 2). Some features (such as delayed colonic transit) are consequences of DD and improve after biofeedback therapy.<sup>53</sup> Other factors, particularly stool form, affect development of symptoms in patients with DD.<sup>54,55</sup> The pathogenesis of DD is unclear. DDs are believed to result from maladaptive learning of sphincter contraction, possibly initiated by avoidance of pain, or trauma,<sup>56</sup> or even neglecting the call to defecate. One-third of children with constipation continued to have severe symptoms beyond puberty.<sup>57</sup> There is no evidence for an association between obstetric trauma and DD.<sup>58</sup>

### Clinical Evaluation

The bowel symptom questionnaire is a quick and effective tool for evaluating symptoms of constipation (Table 1). Questionnaires provide a snapshot of symptoms, whereas a 2-week bowel diary provides a more refined assessment of day-to-day variations and the relationship between stool form and other symptoms.<sup>54</sup> Analyses of bowel diaries recorded by patients when they are off laxatives can help determine contribution of laxatives to symptoms (such as bloating). It is also important to collect information on prior bowel habits, when bowel habits changed, and what patients consider as normal, because perceptions, influenced by societal and cultural norms, influence symptom reporting. Some patients report constipation because they do not, perhaps in contrast to a spouse, pass a daily bowel movement. Other patients, in retrospect, have had mild and/or intermittent symptoms for longer than initially acknowledged (such as since childhood). Inadvertent withholding, perhaps secondary to an aversion to using public toilets, or constipation after recent surgery, medication changes, or coexistent urinary symptoms, are not uncommon. Addressing the most bothersome symptoms of constipation can increase patients' quality of life.<sup>59</sup>

Colonic transit affects fecal form, which is assessed using the Bristol Stool Form Scale and ranges from liquid, to semi-formed, to pellet-like stools.<sup>60–62</sup> Abdominal pain and its relationship to bowel movements can differentiate patients



**Figure 2.** Normal and abnormal anorectal evacuation. Evacuation was recorded by MR imaging (*top row*) and high-resolution manometry (*bottom row*). MR imaging shows anorectum filled with gel at rest (A), increased puborectalis indentation during squeeze (B, *arrow*) and normal relaxation of the puborectalis, perineal descent, opening of the anal canal, and evacuation of ultrasound gel during evacuation (C). In patients with constipation, during evacuation, there is paradoxical contraction of the puborectalis (D, *arrow*) and exaggerated perineal descent with an enterocele (E, *arrow*). High-resolution manometry shows anal pressure at rest (F) and increased anal pressure during squeeze (G) compared to rest (F). The *white rectangle* demarcates the duration of squeeze (G) and evacuation (H–K). Note the increased rectal pressure with anal relaxation during evacuation in a healthy person (H). By contrast during evacuation in constipated patients, note increased rectal pressure with paradoxical anal contraction (I), no change in rectal pressure vs rest (J), and no change in rectal pressure with paradoxical anal contraction (K). Reproduced from Bharucha and Wald,<sup>72</sup> with permission.

with CC from patients with IBS-C. Co-existing gastrointestinal symptoms should be identified; constipated patients frequently have bloating, which can be due to the underlying disorder and/or medications—especially fiber and osmotic laxatives. The presence of multiple other gastrointestinal symptoms (such as dyspepsia), especially in a younger patient without warning signs, supports a functional cause of symptoms.<sup>63</sup> However, distinct mechanisms can cause dyspepsia (such as impaired gastric accommodation) and constipation in the same patients.<sup>64</sup> In constipated patients, fecal impaction, perhaps compounded by laxative-induced overflow diarrhea, increases the risk for fecal incontinence.<sup>65</sup> It is important to ask patients about diet (for adequate fiber intake, intake of calories, and poorly absorbed carbohydrates that contribute to bloating),<sup>66</sup> lifestyle (such as level of activity), toileting habits, medical conditions, obstetric history, and surgery (Table 1). At the appropriate time, patients should be asked whether they have a history of abuse, which is common in patients with DD.<sup>67</sup> Medications and supplements should be reviewed (Supplementary Table 1). Warning signs, such as

unintentional weight loss >10% of body weight, anemia, rectal bleeding, a family history of colorectal cancer, and polyposis syndromes should be identified, which have low predictive values in patients with CC.<sup>68</sup>

A meticulous and directed physical examination is essential for several reasons. Considered in isolation, symptoms (such as straining vs infrequent bowel movements) do not discriminate between DD and other causes of CC.<sup>38,69</sup> Examinations can identify an organic cause for constipation, such as an abdominal mass, whereas dry skin is associated with hypothyroidism. Examinations also reassure patients that their concerns are taken seriously.

Digital rectal examinations (DREs) identify not only structural disorders (such as anal fissures, hemorrhoids, fecal impactions, descending perineum syndrome, or anorectal cancer), but also pelvic floor dyssynergia, which is treated differently.<sup>70</sup> Although DREs are recommended by many different societies, many providers do not perform them for constipated patients.<sup>71</sup> DREs identified patients with dyssynergia with 75% sensitivity and 87% specificity when manometry was used as the reference standard.<sup>70</sup>

Compared with the rectal balloon expulsion test (BET), the sensitivity and specificity of a DRE were 80% and 56%, respectively. For some people with normal pelvic floor function, it is a challenge to simulate defecation during a DRE. This might account for the lower specificity compared with a BET. A normal result from a DRE is more useful than an abnormal result from an examination.<sup>70</sup> Nonetheless, patients with persistent symptoms and a normal finding from DRE should be referred for anorectal testing to exclude DDs.

Thereafter, in the absence of warning signs, patients should receive a diagnosis of CC. A complete blood count is helpful in making a diagnosis, but other laboratory studies are unnecessary.<sup>4,5,72</sup> Colonoscopies are only necessary for patients with alarm symptoms, or as required for age-appropriate screening. Physicians and their patients should discuss the benign nature of CCs, treatment options, and their efficacy, safety, and cost; questions about special tests should be answered.

### Diagnostic Tests

Anorectal testing with manometry and BET are recommended for patients who have not responded to a high-fiber diet and/or simple laxatives.<sup>4,73,74</sup> Because access to anorectal testing is not universal, some practitioners treat patients empirically with prescription laxatives before anorectal testing. However, <25% of patients with IBS-C report being very satisfied with prescription laxatives, perhaps partly because they have a DD. This observation supports the need for anorectal testing.<sup>75</sup>

During anorectal tests, maintenance of privacy will facilitate cooperation and reduce embarrassment, which can account for false-positive results from tests in asymptomatic and constipated patients.<sup>52</sup> Results should be interpreted along with clinical features. There is no criterion standard diagnostic test, or symptom, for a diagnosis of DD. Although different tests provide different information about individual patients,<sup>14,44</sup> overall, the results of anorectal high-resolution anorectal manometry (HRM), BET, and magnetic resonance (MR) imaging are significantly correlated with each other, which substantiates the criterion validity of these tests,<sup>44</sup> even though these tests are performed in different positions, with or without rectal filling. Therefore, the Rome IV criteria propose that a diagnosis of DD be confirmed by abnormal findings from 2 of 4 tests (such as manometry, rectal BET, surface electromyography, or barium or MR defecography). Taking all factors (such as diagnostic utility, usability, availability, risk, and expense) into consideration, the rectal BET is the most useful test to make a diagnosis of DD.

### Balloon Expulsion Test

The BET is a simple procedure generally performed in conjunction with anorectal manometry to evaluate the time required to evacuate a 50-mL water-filled balloon (warm tap water) in the seated position. The normal values depend

on the type of rectal balloon used for the test.<sup>76-78</sup> Most centers use a party or commercial balloon, for which the upper limit of normal is 1 minute. For a Foley catheter inflated to 50 mL, which is above the manufacturer-recommended limit of 30 mL, the upper limit of normal is 2 minutes.<sup>76</sup> Even with the 2-minute cutoff, 25% of healthy people would be misclassified as abnormal because they require more than 2 minutes.<sup>79</sup>

Among 106 patients with FC and 24 patients with DD, the BET identified those with DD, documented with defecography, with 88% sensitivity and 89% specificity; positive and negative predictive values were 64% and 97% for diagnosis of DD, respectively.<sup>80</sup> However, this uncontrolled study excluded patients with secondary (such as medication-induced) CC. The rectal balloon was inflated not to a fixed volume but until patients experienced the desire to defecate, averaging 183 mL, which may compensate for reduced rectal sensation identified in some patients with DD.<sup>41</sup>

### Anorectal Manometry

Conventional catheters that incorporate water-perfused, air-charged, or solid-state sensors, HRM, or high-definition manometry can be used.<sup>81-83</sup> HRM and high-definition anorectal manometry catheters have more closely spaced sensors that straddle the entire anal canal. They provide better spatial resolution, and allow pressures to be assessed without a pull-through maneuver (Figure 2). Although conventional and HRM catheters measure anal pressures with comparable levels of precision, pressures are much higher with HRM or high-definition anorectal manometry than conventional catheters.<sup>84</sup> Anorectal pressures vary among techniques, so they must be compared with normal values measured by the same technique. Compared with healthy individuals, patients with DD have lower rectoanal pressure gradients (rectal-anal pressure) during evacuation. The rectoanal pressure pattern can also indicate causes of DD, such as decreased propulsive force, paradoxical contraction, or both.<sup>69</sup> However, the rectoanal gradient measured by HRM is negative in many asymptomatic people, which limits the utility of this parameter for making a diagnosis of DD.<sup>52,82,85</sup> Anorectal manometry is best performed in a seated rather than a left lateral, recumbent position.<sup>86</sup> Other features of DD include a higher anal resting pressure (anismus) and/or reduced voluntary augmentation during pelvic floor contraction.

### Barium and Magnetic Resonance Defecography

Some practitioners prefer defecography to the BET. Others use defecography as a backup method, when the other anorectal tests produce results that are inconsistent with clinical findings, to identify anatomic abnormalities, or for patients with persistent symptoms after biofeedback therapy.<sup>87-90</sup> Abnormalities include inadequate (such as a spastic disorder) or excessive (such as in descending perineum syndrome) widening of the anorectal angle and/or perineal descent during defecation. Internal

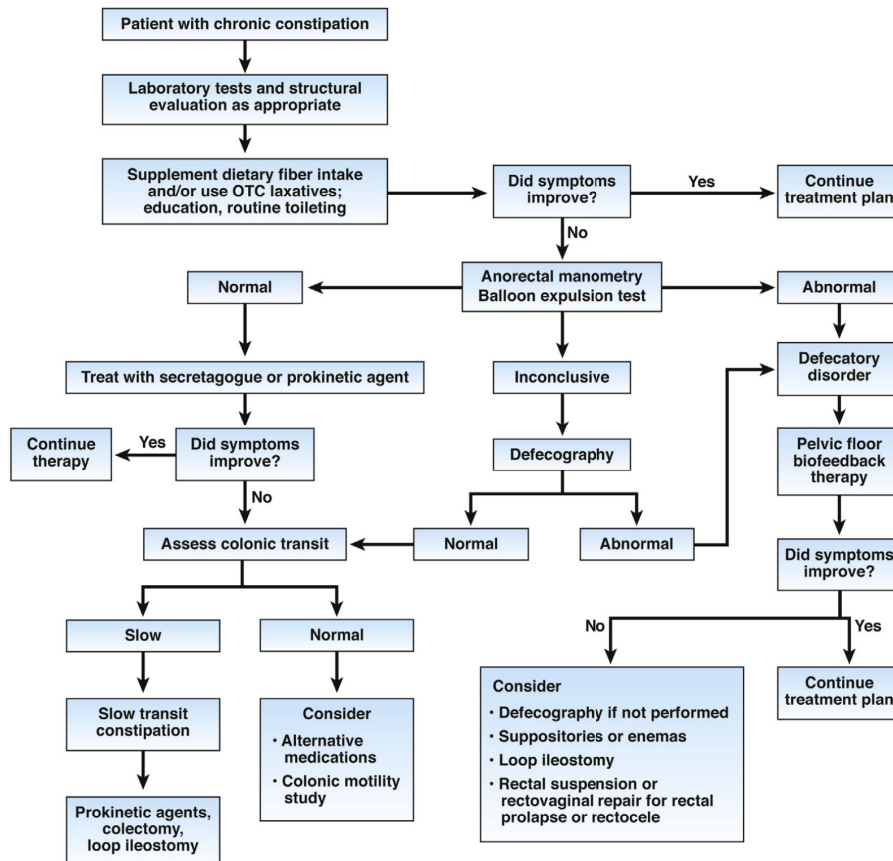


Figure 3. Treatment algorithm for CC.

intussusception, solitary rectal ulcers, rectoceles, and rectal prolapse are also observed.<sup>91</sup> Enteroceles, bladder, and uterovaginal prolapse can be visualized when the vagina and small intestine are opacified.

The techniques for barium defecography are incompletely standardized; some radiologists have limited enthusiasm for the test.<sup>88</sup> Asymptomatic subjects have features of DD. Methodological limitations to barium defecography (such as limited reproducibility of anorectal angle measurements) can be minimized by using standardized techniques.<sup>14,92</sup> In contrast to barium defecography, MR defecography is performed in the supine position but avoids radiation exposure and can be better for visualizing pelvic organ prolapse and the bony landmarks, which are necessary to measure pelvic floor motion.<sup>40,74,93,94</sup> MR defecography is especially useful for patients who are believed to have DDs with a normal BET; this group includes >90% of patients with a large rectocele, enterocele, peritoneocele, and/or peritoneocele (Figure 2).<sup>40,44</sup> Average anal electromyographic activity is recorded by electrodes mounted on an acrylic anal plug or taped to the perianal skin, and is used to identify dyssynergia,<sup>88</sup> and to provide biofeedback training for DD.<sup>95,96</sup> Reduction of  $\geq 20\%$  in anal electromyographic activity during evacuation is considered normal.

By contrast, impaired reduction is considered abnormal and is correlated with rectoanal dyssynergia, identified by manometry and abnormal results from a BET.<sup>76</sup>

### Colon Transit and Intraluminal Measurements of Motor Activity

As many as 50% of patients with DD have slow colon transit, so slow transit does not preclude the need for anorectal testing. The algorithm recommends assessment of anorectal functions before colonic transit (Figure 3). DDs are treated with pelvic biofeedback regardless of colonic transit, so colonic transit should be assessed, using radiopaque markers, colon scintigraphy, colonic manometry, or the wireless motility capsule, only when indicated after anorectal testing, and after discontinuing medications that can affect colonic transit (Figures 2 and 3). Stool frequency is not, although stool form is, modestly correlated with colonic transit.<sup>62</sup> Radiopaque marker studies (Sitz-Mark, Konsyl Pharmaceuticals, Fort Worth, TX) are inexpensive, readily available, easy to perform, and entail modest radiation exposure.<sup>97</sup>

Of the techniques for assessing colonic transit, the simplest entails checking an abdominal x-ray image at 120

hours after 20 or 24 markers are ingested. Colonic transit is normal if >80% of markers have been passed. However, the actual transit time is not estimated. With the Metcalf method, a plain x-ray image is obtained on day 4 after ingesting 24 markers on each of 3 days; the maximum detectable colonic transit time is 72 hours. The number of markers provides the total colonic transit time; <62 hours is probably normal (personal communication, Michel Bouchoucha). The number of markers in each segment (right, left, and rectosigmoid colon) provides the segmental transit time. In patients with delayed colonic transit, the actual transit time can be more accurately quantified from a single x-ray image on day 7 after ingestion of 12 markers on days 1–6; the maximum detectable colonic transit time is 144 hours.<sup>97</sup>

Assessments of colonic transit are reproducible in patients with simple constipation,<sup>61</sup> but less so in patients with DD or STC.<sup>98</sup> Colonic transit should therefore be reevaluated to confirm the diagnosis of STC before surgery. Contrary to older studies, a more recent multicenter study observed that the distribution of markers in the rectosigmoid colon is not associated with DD.<sup>99</sup> However, rectal gas volume, measured with computed tomography, is greater in patients with vs without a rectal evacuation disorder.<sup>100</sup>

Less widely used and more expensive approaches include radionuclide gamma scintigraphy<sup>26,101</sup> or a wireless pH-pressure capsule, which can concurrently measure gastric emptying and small intestinal transit.<sup>102,103</sup> Scintigraphy, performed only at a few select academic centers, requires 24 or 48 hours of measurement compared to 5–7 days for radiopaque marker tests (Figure 1).<sup>104</sup> Colonic transit measured using radiopaque markers correlates well with scintigraphy<sup>61</sup> and the wireless motility-pH capsule.<sup>102</sup> The capsule also measures colonic motor activity.<sup>103</sup> Bowel cleansing shortens colonic transit but is unnecessary because it does not affect the characterization of patients as having normal or slow colon transit.<sup>105</sup>

Although all 3 techniques are equally accurate for measuring colonic transit, only radio-opaque markers and scintigraphy assess regional colonic transit. Of these techniques, the radio-opaque marker method is the simplest and least expensive, and is therefore the best way to measure colonic transit. Scintigraphy or the motility pH capsule should be used when it is also necessary to measure gastric emptying and/or small intestinal transit. If patients can only discontinue medications for a few days, scintigraphy is preferred. The ability to distinguish normal from slow transit can aid in determining the need for colectomy.

Colonic phasic motor activity recorded with manometry varies even in healthy people. Few centers offer to assess colonic tone and phasic pressure activity with a barostat manometry assembly, for which extensive normal values are available.<sup>23</sup> For some patients with medically refractory STC, it is useful to evaluate colonic motility with colonic manometry or barostat manometry and document colonic motor dysfunction; findings can support the decision to proceed with subtotal colectomies for patients who do not have pelvic floor dysfunction (Figure 1).<sup>21</sup> This approach is more widely used in children than adults with STC.

### Putting It All Together

At the conclusion of the initial clinical evaluation, it should be possible to tentatively classify patients with symptoms of constipation as NTC, STC when pelvic floor function is normal, DDs (anismus/dyssynergia-failure of relaxation; or descending perineal syndrome and other flaccid disorders), or a combination of these (see Figure 3). Patients could also have organic constipation (mechanical obstruction or drug side effect; see Table 1 and Supplementary Table 1). The severity of pain can be used to characterize patients as mild pain/painless constipation or painful constipation (see Supplementary Figure 1).

### Management

Management options for patients differ in ease of use, availability, cost, mechanism, efficacy, and safety (Table 3). Some, but not all, have been studied in large, randomized, controlled trials. Others, although commonly used, have not been carefully scrutinized (such as cascara). The aim of treatment is to correct bowel disturbances in patients with CC or IBS-C and reduce abdominal pain in patients with IBS-C. A treatment algorithm has been developed, based on factors that include efficacy, availability, ease of use, and cost, but not validated. Each patient requires an individual treatment plan; it is important to remember many patients in gastroenterology clinics have already been failed by over-the-counter agents, so prescription medications might be the logical first choice after DDs are excluded (for specific measures for opioid-induced constipation, see Luthra et al<sup>106</sup>).

It is important to educate patients about CC and its progression; patients' questions, concerns, and goals should all be addressed. Caloric intake should be estimated because caloric restriction might cause constipation.<sup>107</sup> Patients should be encouraged to consume 25–30 g fiber daily as fresh fruit, fresh vegetables, legumes, and whole grains, because fiber adds bulk to stool and stimulates intestinal transit.<sup>108</sup> Although exercise is generally beneficial, its effects on constipation are unclear.<sup>109,110</sup> Taking advantage of the gastrocolic reflex, bathroom time should be scheduled after meals. There is no evidence that drinking more water is beneficial for constipation.<sup>109</sup>

### Fiber

Soluble (such as psyllium or ispaghula) but not insoluble dietary fiber (such as wheat bran) supplements improve symptoms in patients with CC<sup>108</sup> or IBS-C.<sup>111</sup> Of 4 trials of fiber, the largest enrolled 201 patients with CC<sup>112</sup> and 3 gave patients psyllium, but only for 4 weeks.<sup>108</sup> In a meta-analysis of 17 trials, soluble fiber improved symptoms in IBS-C but had variable effects on abdominal pain.<sup>111</sup> In a randomized trial of 275 primary care patients with IBS-C given psyllium (10 g, twice daily) or bran, only psyllium was more effective than placebo after 1 month.<sup>113</sup> At 3 months, bran was more effective placebo. More than 60% of patients given bran or psyllium reported adverse effects, primarily constipation or diarrhea. However, 29% and 40% of patients dropped out by 2 and 3 months of follow-up.



**Table 3.** Medical Management of Chronic Constipation

Treatment and frequency	Dose	Number needed to treat for CC and IBS-C	Cost/mo, US\$ (2019)	Comments
Bulking agents, psyllium, daily	CC: Variable dose IBS-C: Variable dose	CC: 2 (95% CI, 1–3) <sup>79</sup> IBS-C: 10 (95% CI, 6–33) <sup>79</sup>	8.34	Start with low dose and increase gradually.
PEG, daily	CC: 17 g IBS-C: 17 g	CC: 3 (95% CI, 2–4) <sup>2</sup> IBS-C: NA	30.90	More evidence from studies of CC than IBS-C. Improved bowel symptoms but not abdominal pain in patients with IBS-C. <sup>80</sup>
Lactulose, daily	20 g	NA	11.20	Can produce bloating and distension.
Bisacodyl, daily	CC: 10 mg IBS-C: 10 mg	CC: 4 (95% CI, NA) <sup>81</sup> IBS-C: NA	5.17	Available as suppository, preferably administered 30 min after breakfast.
Senna, daily	17.2–34.4 mg	—	5.90	Widely used anthraquinone laxative
Prucalopride, daily	CC: 2 mg IBS-C: NA	CC: 6 (95% CI, 5–9) <sup>2</sup> IBS-C: NA	395.67	Approved in the United States; available in Mexico, Canada, and Europe.
Linaclotide, daily	CC: 72 µg IBS-C: 290 µg	CC: 72 µg, 12 (95% CI, 6–29); 145 µg, 10 (95% CI, 6–19) <sup>78</sup> IBS-C: 290 µg, 6 (95% CI, 4–16)	395.41	Reduces abdominal pain, bloating, and overall symptoms of IBS in patients with IBS-C.
Lubiprostone, twice daily	CC: 24 µg IBS-C: 8 µg	CC: 24 µg, 4 (95% CI, 3–6) <sup>79</sup> IBS-C: 8 µg, 12 (95% CI, 8–25)	342.92	Also reduces abdominal bloating, discomfort, and severity of constipation in patients with opioid-induced constipation. <sup>82</sup>
Plecanatide, daily	CC: 3 mg or 6 mg IBS-C: 6 mg <sup>a</sup>	CC: 3 mg, 11 (95% CI, 8–19) 6 mg, 12 (95% CI, 8–23) <sup>78</sup> IBS-C: 3 mg, 9 (95% CI, 6–16) 6 mg, 9 (95% CI, 6–17)	384.36	Similar to linaclotide.
Tenapanor, twice daily	CC: NA IBS-C: 50 mg	IBS-C: NA	NA	Only studied in patients with IBS-C and only approved in the United States. Diarrhea is the most frequent side effect. Safety analysis underway in 2 phase 3 trials

NOTE. Modified from Bharucha and Wald,<sup>72</sup> with permission. CI, confidence interval; NA, not available.

<sup>a</sup>FDA-approved dose for CC and IBS-C is 3 mg daily.

The potential therapeutic effects, low cost, safety profile, and other potential health benefits of dietary fiber justify increasing dietary fiber intake, either as a standardized supplement or with foods, as a first step for patients with CC—particularly those in primary care. In contrast to NTC, patients with drug-induced or STC are unlikely to respond to fiber supplementation.<sup>114</sup> Patients should be instructed to begin with 5 g fiber daily, divided in 2 doses, to be taken with fluids and/or meals and gradually increase at 1- to 2-week intervals up to 10–15 g daily. Unlike a purgative, the response may take several weeks to be evident. Fiber supplements may increase gaseousness but the symptoms often decrease after several days. Sometimes gaseousness can be reduced by switching to another fiber supplement.

#### Osmotic and Stimulant Laxatives

Osmotic agents include polyethylene glycol (PEG)-based solutions, magnesium citrate-based products, sodium

phosphate-based products, and nonabsorbable carbohydrates. Through osmosis, these hypertonic products extract fluid into the intestinal lumen to soften stools and accelerate colon transit. By contrast, the PEG and electrolyte lavage solution used for colonic cleansing, typically not for CC, is iso-osmotic with plasma; bowel evacuation is by high-volume lavage.

The osmotic laxatives are consistently better than placebo for improving the symptoms of CC.<sup>115</sup> The strongest evidence exists for PEG, which has been evaluated in 19 trials, mostly compared to placebo, followed by lactulose and tegaserod.<sup>115,116</sup> In the largest study (304 patients treated for 6 months), patients given PEG had more bowel movements per week than patients given placebo.<sup>117</sup> One controlled trial with PEG was of 6 months' duration.<sup>115</sup> In a retrospective series study, its efficacy was maintained for up to 24 months, which is longer than the 7-day recommended trial.<sup>117,118</sup> Patients prefer PEG preparations without electrolyte supplements,<sup>119</sup> which are necessary when a large volume is used.<sup>120</sup>

Although magnesium hydroxide and other salts are sparingly absorbed and generally safe, these have not been tested in randomized controlled trials. Severe hypermagnesemia may occur in patients with renal impairment.<sup>121</sup> Sodium phosphate-based bowel cleansing preparations should be avoided because they are associated with hyperphosphatemia, hypocalcemia, and hypokalemia, and in fewer than 1 in 1000 individuals, with acute phosphate nephropathy.<sup>121,122</sup> A Cochrane review of 10 randomized trials concluded that PEG was superior to lactulose for improving stool frequency, stool consistency, and abdominal pain.<sup>123</sup> Among nonabsorbable carbohydrates, lactulose and sorbitol had similar laxative effects, but lactulose was associated with more nausea in a randomized crossover study of 30 men<sup>124</sup>; sorbitol is less sweet than lactulose and accelerates proximal colonic emptying.<sup>125,126</sup> Dosing of prescription laxatives varies from patient to patient and from agent to agent. The general goal is to improve predominant symptoms reported by patients. Bacterial metabolism of unabsorbed carbohydrate leads to gas production and abdominal cramping, which can limit long-term use. There have been no large studies of lactitol, mannitol, or sorbitol for treating constipation.

### Stimulant Laxatives

Stimulant laxatives, which include diphenylmethane derivatives (bisacodyl and sodium picosulfate) and anthraquinone derivatives (senna, aloe, cascara sagrada), are often used on a rescue basis, such as for patients who have not defecated for 2–3 days. Bisacodyl and sodium picosulfate are converted, respectively, by mucosa deacetylase enzymes and desulfatases of the colonic microflora to the same active metabolite, bis-(p-hydroxyphenyl)-pyridyl-2-methane, which has anti-absorptive secretory effects and induces colonic HAPCs.<sup>18,127</sup> The anthraquinones also increase colonic motility, perhaps following epithelial damage, and alter colonic absorption and secretion.<sup>128</sup> Two 4-week double-blind, randomized controlled trials demonstrated that sodium picosulfate (10 mg/d) or bisacodyl (10 mg/d) were more effective than placebo in 367 and 247 patients, respectively, with FC.<sup>129,130</sup> However, there have been no long-term studies or comparisons with other drugs. Use is often limited by side effects of abdominal pain and diarrhea.

An ionic surfactant, docusate sodium, decreases the surface tension at the stool oil–water interface, allowing water to penetrate the stool. Although it is frequently recommended, there are few data to support its use. In a double-blind, randomized, controlled trial of 170 patients with constipation, docusate sodium (100 mg twice daily) was less effective than psyllium.<sup>131</sup>

### Secretagogues

The US Food and Drug Administration (FDA) and the European Medicines Evaluation Agency approved lubiprostone, linaclotide, and plecanatide for treatment of CC and IBS-C. The US FDA also approved tenapanor for treatment of

IBS-C in September 2019. These secretagogues stimulate net efflux of ions and water into the intestinal lumen, likely accelerate transit, and facilitate ease of defecation.

By activating channels on the apical (luminal) enterocyte surface, these secretagogues increase intestinal chloride secretion. Other ion channels and transporters secrete sodium into the intestine to maintain electroneutrality; water secretion follows. Lubiprostone is a bicyclic fatty acid derived from prostaglandin E<sub>1</sub> that activates type 2 chloride channels on the apical membrane of epithelial cells. In a 4-week, randomized trial, lubiprostone was more effective than placebo in improving bowel symptoms in patients with CC.<sup>132</sup> Nausea, typically mild, was the most common adverse event. Linaclotide and plecanatide are guanylate cyclase C activators that induce fluid secretion into the gastrointestinal tract via an increase in cyclic guanosine monophosphate and subsequent activation of the cystic fibrosis transmembrane regulator. These drugs are similar to endogenous peptides, primarily expressed in the small (uroguanylin) or large (guanylin) intestine, that also activate guanylate cyclase C.<sup>133</sup> Fasting and/or postprandial levels of prouroguanylin and uroguanylin are reduced in patients with CC and IBS-C, which might impair fluid and electrolyte secretion to cause constipation. Increased cyclic guanosine monophosphate improved abdominal pain in an animal model of visceral pain.<sup>134</sup>

In two 12-week, double-blind, randomized controlled trials, comprising 1276 patients with CC, linaclotide (290 µg or 145 µg, once daily) reduced symptoms more effectively than placebo.<sup>135</sup> A lower dose (72 µg, once daily) was also more effective than placebo and has been approved by the FDA for treatment of CC.<sup>135,136</sup> Plecanatide (3- and 6-mg doses) was more effective than placebo in 2 phase 3 randomized trials comprising 2804 adults with CC; the 3-mg dose has been approved by the FDA.<sup>137,138</sup>

Diarrhea, the most common adverse event of linaclotide or plecanatide therapy, necessitated discontinuation of treatment in <5% of patients.<sup>135–138</sup> Linaclotide and plecanatide are of similar efficacy and tolerability for treatment of CC.<sup>139</sup> Tenapanor, a small-molecule inhibitor of the gastrointestinal sodium-hydrogen exchanger-3, was superior to placebo in improving constipation symptoms in a phase 2 study<sup>140,141</sup> and in 2 phase 3 trials. In these trials, 12 weeks (610 patients) and 26 weeks (593 patients) of tenapanor (50 mg, twice daily) were more effective than placebo in patients with IBS-C.<sup>142</sup>

### Prokinetic and Other Agents

Prucalopride, a dihydrodibenzofurancarboxamide derivative, is a selective agonist of serotonin 5-HT<sub>4</sub> receptors, which are found throughout the gastrointestinal tract, including the colon.<sup>143</sup> Multicenter, double-blind, randomized trials of prucalopride in patients with CC differed in sample size, study duration (4–24 weeks), and dose (1 mg, 2 mg, or 4 mg vs placebo).<sup>143</sup> In 6 of 7 studies, prucalopride was more effective than placebo. The only 24-week study did not find a statistically significant difference between effects of prucalopride and placebo.<sup>144</sup> The most

frequent, generally transient, side effects were headache, nausea, and diarrhea. There were no significant cardiovascular side effects. The European Medicines Agency and the FDA have approved prucalopride for treatment of CC. Based on 3 pivotal studies in 3199 patients, the 5-HT<sub>4</sub> agonist tegaserod was approved for treatment of IBS-C and then voluntarily withdrawn from the market in 2007 after a greater number of cardiovascular events were observed in a database of 18,000 patients given tegaserod (n = 13; 0.11%) or placebo (n = 1; 0.01%).<sup>145</sup> In April 2019, the FDA reviewed extensive supplementary data and approved the use of tegaserod in women younger than 65 years of age who do not have a history of ischemic cardiovascular disease and who have no more than 1 risk factor for cardiovascular disease.

A systematic review found that probiotics (*Bifidobacterium lactis* DN173010, *Lactobacillus casei* Shirota, *Lactobacillus casei* YIT) can increase mean stool frequency.<sup>146</sup> However, the assessment was limited by a high risk of bias in these studies. Prunes (approximately 6 twice daily) might reduce symptoms of CC via their combination of fiber and fructose.<sup>147</sup> Hemp seed extract might also be effective in some patients.<sup>148</sup>

### Comparison of Agents

In the absence of rigorous, direct comparisons of drugs,<sup>117,149</sup> the relative efficacy of these agents can be assessed by comparing the number needed to treat among trials or through network meta-analyses of CC<sup>150,151</sup> and IBS-C.<sup>141</sup> Although these comparisons are useful, they are limited by differences in patient populations, definitions of end points and adverse events, and durations of treatment. Nonetheless, lubiprostone, linaclotide, and prucalopride are all more effective than placebo and of comparable efficacy, with estimated numbers needed to treat of 4, 6, and 6, respectively, based on end points of complete spontaneous bowel movements and increases in complete spontaneous bowel movements compared with baseline.<sup>150</sup>

Plecanatide had not been rigorously evaluated when this analysis was performed. More recently, a network meta-analysis by Luthra et al<sup>151</sup> found that stimulant diphenyl methane laxatives were most effective at 4 weeks, although prucalopride (2 and 4 mg) and linaclotide (290 µg) had similar efficacies at 12 weeks. There have been no direct comparisons of the secretagogues or prucalopride vs over-the-counter laxatives. Little is known about the incremental effects, if any, of these agents vs more inexpensive laxatives.

### Management of Defecatory Disorders

DDs should be managed with biofeedback-aided pelvic floor retraining.<sup>152</sup> Through visual or auditory feedback of anorectal and pelvic floor muscle activity, which is recorded with surface electromyographic sensors or manometry, patients learn to increase intra-abdominal pressure and relax the pelvic floor muscles during defecation. Subsequently, patients practice by expelling an air-filled balloon. Sensory retraining, in which patients learn to recognize

weaker sensations of rectal filling, may also be provided to patients with reduced rectal sensation. Although therapy may also include Kegel exercises, the emphasis is on appropriately coordinating abdominal and pelvic floor motion during evacuation.

Regrettably, biofeedback therapy is underused, perhaps because its benefits are not widely recognized and the expertise is not widely available. Contrary to findings from a previous study,<sup>153</sup> pelvic floor retraining was found to be more effective for DD than in isolated STC.<sup>53</sup> Colonic transit normalized after biofeedback therapy in 65% of patients with DD, but in only 8% of patients with STC, indicating that delayed colonic transit could be secondary to pelvic floor dysfunction.<sup>53</sup> In controlled studies that provided 5–6 training sessions lasting 30–60 minutes at 2-week intervals, biofeedback therapy was more effective than PEG,<sup>95</sup> sham feedback,<sup>154</sup> or diazepam.<sup>96</sup> Alternatively, daily sessions can be provided. The skill and experience of therapists and patients' motivation affect responses to biofeedback therapy. Dietitians and behavioral psychologists should also be involved, as necessary. Third-party coverage for biofeedback therapy in DD has improved but is suboptimal.

### Management of Chronic Constipation Refractive to Medical Therapy

Refractory symptoms, practically defined by a 4-week trial of pharmacologic therapy to each drug or a 3-month trial of pelvic floor behavioral therapy, are not uncommon.<sup>155</sup> A systematic review of colectomy for CC found that most studies were of ileorectal anastomosis.<sup>156</sup> Although the studies were limited by inconsistent reporting and heterogeneity, an average of 86% of patients benefited at 1 year or more after surgery. When the Cleveland Clinic Constipation scoring system was used, patients' scores decreased from a preoperative mean of 20 points or more, indicating severe constipation, to a low to normal range of 2–3. However, 18.2% of patients had persistent constipation after a colectomy. Others had diarrhea and fecal incontinence (5%–15% of patients), abdominal pain (30%–50% of patients), or bloating (10%–40%). When abdominal pain and/or bloating are predominant symptoms, the decision to perform a colectomy should be made carefully. If a colectomy is to be performed, it might be preceded by temporary loop ileostomy to determine whether symptoms emanate from the small intestine or colon. Outcomes after colectomy are poorer in patients with generalized intestinal, rather than isolated colonic, dysmotility and in some but not all patients with DD.

Patients with DD should therefore undergo biofeedback therapy before colectomy. Guided by regional measurements of colonic transit, segmental resection (such as left hemicolectomy) has been proposed but does not perform better than an ileorectal anastomosis. Approximately 20%–30% of patients have perioperative complications, primarily ileus and early or late small bowel obstruction. In some studies, these complications were less frequent after laparoscopic vs open surgery.

Therapeutic options for patients with DD refractory to biofeedback therapy are limited. Although enemas or suppositories are frequently used by patients, there have been no controlled studies of their utility or safety in patients with DD. The adrenergic  $\alpha_1$  receptor antagonist alfuzosin, which probably relaxes the internal anal sphincter, reduced anal pressures in healthy people and patients with DD, but did not improve symptoms of DD.<sup>55,157</sup> Sacral nerve stimulation increases pancolonic antegrade propagating sequence frequency in patients with STC.<sup>158</sup> Contrary to findings from uncontrolled studies,<sup>159</sup> findings from more rigorous studies<sup>160-162</sup> and from a double-blind study of 45 patients with constipation are less encouraging.<sup>163</sup> Sacral nerve stimulation is therefore not recommended for treating refractory constipation. Poor-quality studies found that rectal suspension procedures, a form of rectopexy, might improve symptoms and also be accompanied by healing of prolapse-associated solitary rectal ulcer syndrome in patients with refractory constipation and rectal intussusception.<sup>164</sup> A systematic review of rectovaginal reinforcement procedures in patients with constipation and a large rectocele found limited evidence to support the efficacy of these procedures; most evidence was derived from observational studies and comparisons.<sup>165</sup>

Percutaneous endoscopic cecostomy is used for colonic irrigation in patients with sigmoid volvulus, chronic intestinal pseudo-obstruction, or CC.<sup>155</sup> Performed under local anesthesia and conscious sedation, it is a less-invasive alternative to surgery. Among 12 reports, the procedure was successful in 122 of 127 patients with medically refractory constipation, of which 56% had procedure-related complications (chronic pain [15%], granulation tissue at stoma site [12%], and local-site infections [10%]); only 1 patient developed peritonitis. Assessments of efficacy, albeit suboptimal, found symptoms to improve in >50% of patients. Further studies are necessary before this procedure can be recommended.

During transanal irrigation, a device is used to lavage the colon with water (volumes of 70–1000 mL). In 7 uncontrolled, mostly retrospective reports of transanal irrigation (comprising 254 patients with constipation), 30%–65% of patients reported a positive outcome.<sup>166</sup> A separate retrospective study analyzed outcome questionnaires given to 102 of 148 consecutive patients who used transanal irrigation for an average duration of 60.5 weeks.<sup>167</sup> Overall satisfaction was increased in 67% of patients; 39% reported being moderately better and 28% reported being very much better. Prospective controlled studies are underway<sup>168</sup> to evaluate different methods of irrigation and the cost-effectiveness of transanal irrigation.

## Summary and Future Directions

An algorithm is useful for managing CC. Identifying the predominant symptom and a meticulous DRE are essential. Aside from a complete blood count, no tests are necessary in the absence of alarm symptoms; age-appropriate colonic structural evaluations should be performed. If feasible, medications that can cause constipation, especially opioids,

should be discontinued. Thereafter, an empiric trial of fiber with osmotic and/or stimulant laxatives is advisable. Many patients obtain symptom relief with these measures, which are safe for long-term use. For patients who do not respond, anorectal testing is necessary; biofeedback therapy is the cornerstone for managing DD. Assessment of colonic transit will identify STC, which should be treated initially with laxatives and, if necessary, with secretagogues or prokinetic agents. Patients who do not respond to these treatments should be considered for surgery or other less-invasive options, although few will qualify after careful physiologic evaluation. Psychological conditions should be considered as contributing factors. Future trials of patients with IBS-C or FC should assess for and exclude patients with DD, compare newer therapeutic agents with over-the-counter laxatives, and evaluate the clinical effectiveness and cost-effectiveness of the management algorithm presented.

## Supplementary Material

Note: To access the supplementary material accompanying this article, visit the online version of *Gastroenterology* at [www.gastrojournal.org](http://www.gastrojournal.org), and at <http://dx.doi.org/10.1053/j.gastro.2019.12.034>.

## References

- Mugie SM, Benninga MA, Di Lorenzo C. Epidemiology of constipation in children and adults: a systematic review. *Best Pract Res Clin Gastroenterol* 2011;25:3–18.
- Lacy BE, Levenick JM. Epidemiology of constipation. In: Talley NJ, Locke GR, Moayyedi P, et al, eds. *GI Epidemiology: Diseases and Clinical Methodology*. Hoboken, NJ: Blackwell, 2014:235–248.
- Peery AF, Crockett SD, Murphy CC, et al. Burden and cost of gastrointestinal, liver, and pancreatic diseases in the United States: update 2018. *Gastroenterology* 2019; 156:254–272.e11.
- Bharucha AE, Pemberton JH, Locke GR 3rd. American Gastroenterological Association technical review on constipation. *Gastroenterology* 2013;144:218–238.
- Mearin F, Lacy BE, Chang L, et al. Bowel disorders. *Gastroenterology* 2016;18:18.
- Locke GR 3rd, Pemberton JH, Phillips SF. AGA technical review on constipation. *American Gastroenterological Association. Gastroenterology* 2000; 119:1766–1778.
- Pare P, Ferrazzi S, Thompson WG, et al. An epidemiological survey of constipation in Canada: definitions, rates, demographics, and predictors of health care seeking. *Am J Gastroenterol* 2001;96:3130–3137.
- Whitehead WE, Palsson OS, Simren M. Biomarkers to distinguish functional constipation from irritable bowel syndrome with constipation. *Neurogastroenterol Motil* 2016;28:783–792.
- Bharucha AE, Sharma M. Painful and painless constipation: all roads lead to (a change in) Rome. *Dig Dis Sci* 2018;63:1671–1674.

10. Bouchoucha M, Devroede G, Mary F, et al. Painful or mild-pain constipation? A clinically useful alternative to classification as irritable bowel syndrome with constipation versus functional constipation. *Dig Dis Sci* 2018;63:1763–1773.
11. Wong RK, Palsson OS, Turner MJ, et al. Inability of the Rome III criteria to distinguish functional constipation from constipation-subtype irritable bowel syndrome. *Am J Gastroenterol* 2010;105:2228–2234.
12. Bharucha AE, Camilleri M. Physiology of the colon and its measurement. In: Yeo CJ, DeMeester SR, McFadden DW, et al, eds. *Shackelford's Surgery of the Alimentary Tract. Volume 2, The Colon*. 8th ed. Philadelphia: Elsevier, 2018:1728–1739.
13. Corsetti M, Costa M, Bassotti G, et al. First “translational” consensus on terminology and definition of colonic motility as studied in humans and animals by means of manometric and non-manometric techniques. *Nat Clin Pract Gastroenterol Hepatol* 2019;16:559–579.
14. Palit S, Thin N, Knowles CH, et al. Diagnostic disagreement between tests of evacuatory function: a prospective study of 100 constipated patients. *Neurogastroenterol Motil* 2016;28:1589–1598.
15. Dinning PG, Wiklendt L, Gibbins I, et al. Low-resolution colonic manometry leads to a gross misinterpretation of the frequency and polarity of propagating sequences: initial results from fiber-optic high-resolution manometry studies. *Neurogastroenterol Motil* 2013;25:e640–e649.
16. Narducci F, Bassotti G, Granata MT, et al. Colonic motility and gastric emptying in patients with irritable bowel syndrome. Effect of pretreatment with octylonium bromide. *Dig Dis Sci* 1986;31:241–246.
17. Scott SM. Manometric techniques for the evaluation of colonic motor activity: current status. *Neurogastroenterol Motil* 2003;15:483–513.
18. Bharucha AE. High amplitude propagated contractions. *Neurogastroenterol Motil* 2012;24:977–982.
19. He CL, Burgart L, Wang L, et al. Decreased interstitial cell of cajal volume in patients with slow-transit constipation. *Gastroenterology* 2000;118:14–21.
20. Farrugia G. Interstitial cells of Cajal in health and disease. *Neurogastroenterol Motil* 2008;20(Suppl 1):54–63.
21. Camilleri M, Bharucha AE, di Lorenzo C, et al. American Neurogastroenterology and Motility Society consensus statement on intraluminal measurement of gastrointestinal and colonic motility in clinical practice. *Neurogastroenterol Motil* 2008;20:1269–1282.
22. Dinning PG, Smith TK, Scott SM. Pathophysiology of colonic causes of chronic constipation. *Neurogastroenterol Motil* 2009;21(Suppl 2):20–30.
23. Ravi K, Bharucha AE, Camilleri M, et al. Phenotypic variation of colonic motor functions in chronic constipation. *Gastroenterology* 2010;138:89–97.
24. Bassotti G. If it is inert, why does it move? *Neurogastroenterol Motil* 2004;16:395–396.
25. Herve S, Savoye G, Behbahani A, et al. Results of 24-h manometric recording of colonic motor activity with endoluminal instillation of bisacodyl in patients with severe chronic slow transit constipation. [see comment]. *Neurogastroenterol Motil* 2004;16:397–402.
26. Manabe N, Wong BS, Camilleri M, et al. Lower functional gastrointestinal disorders: evidence of abnormal colonic transit in a 287 patient cohort. *Neurogastroenterol Motil* 2010;22:293.e82.
27. Hadley SJ, Walsh BT. Gastrointestinal disturbances in anorexia nervosa and bulimia nervosa. *Curr Drug Targets CNS Neurol Disord* 2003;2:1–9.
28. Mertz H, Naliboff B, Mayer E. Physiology of refractory chronic constipation. *Am J Gastroenterol* 1999;94:609–615.
29. Lanfranchi GA, Bazzocchi G, Brignola C, et al. Different patterns of intestinal transit time and anorectal motility in painful and painless chronic constipation. *Gut* 1984;25:1352–1357.
30. Posserud I, Syrous A, Lindstrom L, et al. Altered rectal perception in irritable bowel syndrome is associated with symptom severity. *Gastroenterology* 2007;133:1113–1123.
31. Mertz H, Naliboff B, Mayer EA. Symptoms and physiology in severe chronic constipation. *Am J Gastroenterol* 1999;94:131–138.
32. Cao H, Liu X, An Y, et al. Dysbiosis contributes to chronic constipation development via regulation of serotonin transporter in the intestine. *Sci Rep* 2017;7:10322.
33. Ge X, Zhao W, Ding C, et al. Potential role of fecal microbiota from patients with slow transit constipation in the regulation of gastrointestinal motility. *Sci Rep* 2017;7:441.
34. Parthasarathy G, Chen J, Chen X, et al. Relationship between colonic vs fecal microbiota and symptoms, colonic transit, and methane production in female patients with chronic constipation. *Gastroenterology* 2016;150:367–379.e1.
35. Rao SS, Bharucha AE, Chiarioni G, et al. Functional anorectal disorders. *Gastroenterology* 2016;25:25.
36. Preston DM, Lennard-Jones JE. Anismus in chronic constipation. *Dig Dis Sci* 1985;30:413–418.
37. Rao SS, Welcher KD, Leistikow JS. Obstructive defecation: a failure of rectoanal coordination. *Am J Gastroenterol* 1998;93:1042–1050.
38. Rao SS, Mudipalli RS, Stessman M, et al. Investigation of the utility of colorectal function tests and Rome II criteria in dyssynergic defecation (anismus). *Neurogastroenterol Motil* 2004;16:589–596.
39. Palit S, Lunniss PJ, Scott SM. The physiology of human defecation. *Dig Dis Sci* 2012;57:1445–1464.
40. Bharucha AE, Fletcher JG, Seide B, et al. Phenotypic variation in functional disorders of defecation. *Gastroenterology* 2005;128:1199–1210.
41. Gladman MA, Lunniss PJ, Scott SM, et al. Rectal hyposensitivity. *Am J Gastroenterol* 2006;101:1140–1151.
42. Burgell RE, Lelic D, Carrington EV, et al. Assessment of rectal afferent neuronal function and brain activity in patients with constipation and rectal hyposensitivity. *Neurogastroenterol Motil* 2013;25:260–267; e167–e168.
43. Palit S, Bhan C, Lunniss PJ, et al. Evacuation proctography: a reappraisal of normal variability. *Colorectal Dis* 2014;16:538–546.

44. Prichard DO, Lee T, Parthasarathy G, et al. High-resolution anorectal manometry for identifying defecatory disorders and rectal structural abnormalities in women. *Clin Gastroenterol Hepatol* 2017;15:412–420.
45. Henry MM, Parks AG, Swash M. The pelvic floor musculature in the descending perineum syndrome. *Br J Surg* 1982;69:470–472.
46. Preston DM, Lennard-Jones JE. Severe chronic constipation of young women: "idiopathic slow transit constipation." *Gut* 1986;27:41–48.
47. Law NM, Bharucha AE, Zinsmeister AR. Rectal and colonic distension elicit viscerovisceral reflexes in humans. *Am J Physiol Gastrointest Liver Physiol* 2002;283:G384–G389.
48. Schweiger M, Alexander-Williams J. Solitary-ulcer syndrome of the rectum: its association with occult rectal prolapse. *Lancet* 1977;309:170–171.
49. Parks AG, Swash M, Urich H. Sphincter denervation in anorectal incontinence and rectal prolapse. *Gut* 1977;18:656–665.
50. Bartram CI, Turnbull GK, Lennard-Jones JE. Evacuation proctography: an investigation of rectal expulsion in 20 subjects without defecatory disturbance. *Gastrointest Radiol* 1988;13:72–80.
51. Chiarioni G, Nardo A, Vantini I, et al. Biofeedback is superior to electrogalvanic stimulation and massage for treatment of levator ani syndrome. *Gastroenterology* 2010;138:1321–1329.
52. Oblizajek NR, Gandhi S, Sharma M, et al. Anorectal pressures measured with high-resolution manometry in healthy people—normal values and asymptomatic pelvic floor dysfunction. *Neurogastroenterol Motil* 2019;0:e13597.
53. Chiarioni G, Salandini L, Whitehead WE. Biofeedback benefits only patients with outlet dysfunction, not patients with isolated slow transit constipation. *Gastroenterology* 2005;129:86–97.
54. Bharucha AE, Seide BM, Zinsmeister AR, et al. Insights into normal and disordered bowel habits from bowel diaries. *Am J Gastroenterol* 2008;103:692–698.
55. Chakraborty S, Feuerhak K, Muthyala A, et al. Effects of alfuzosin, an  $\alpha_1$  adrenergic antagonist, on anal pressures and bowel habits, in women with and without defecatory disorders. *Clin Gastroenterol Hepatol* 2019;17:1138–1147.e3.
56. Whitehead WE, di Lorenzo C, Leroi AM, et al. Conservative and behavioural management of constipation. *Neurogastroenterol Motil* 2009;21(Suppl 2):55–61.
57. van Ginkel R, Reitsma JB, Buller HA, et al. Childhood constipation: longitudinal follow-up beyond puberty. *Gastroenterology* 2003;125:357–363.
58. Klingele CJ, Bharucha AE, Fletcher JG, et al. Pelvic organ prolapse in defecatory disorders. *Obstet Gynecol* 2005;106:315–320.
59. Wald A, Scarpignato C, Kamm MA, et al. The burden of constipation on quality of life: results of a multinational survey. *Aliment Pharmacol Ther* 2007;26:227–236.
60. Barnett JL, Hasler WL, Camilleri M. American Gastroenterological Association Medical position statement on anorectal testing techniques. *Gastroenterology* 1999;116:732–760.
61. Degen LP, Phillips SF. How well does stool form reflect colonic transit? *Gut* 1996;39:109–113.
62. Saad RJ, Rao SSC, Koch KL, et al. Do stool form and frequency correlate with whole-gut and colonic transit? Results from a multicenter study in constipated individuals and healthy controls. *Am J Gastroenterol* 2010;105:403–411.
63. Locke GR 3rd, Zinsmeister AR, Fett SL, et al. Overlap of gastrointestinal symptom complexes in a US community. *Neurogastroenterol Motil* 2005;17:29–34.
64. Bharucha AE, Chakraborty S, Sletten CD. Common functional gastroenterological disorders associated with abdominal pain. *Mayo Clin Proc* 2016;91:1118–1132.
65. Cauley CE, Savitt LR, Weinstein M, et al. A quality-of-life comparison of two fecal incontinence phenotypes: isolated fecal incontinence versus concurrent fecal incontinence with constipation. *Dis Colon Rectum* 2019;62:63–70.
66. Skoog SM, Bharucha AE. Dietary fructose and gastrointestinal symptoms: a review. *Am J Gastroenterol* 2004;99:2046–2050.
67. Noelting J, Eaton JE, Choung RS, et al. The incidence rate and characteristics of clinically diagnosed defecatory disorders in the community. *Neurogastroenterol Motil* 2016;28:1690–1697.
68. Adelstein B-A, Macaskill P, Chan SF, et al. Most bowel cancer symptoms do not indicate colorectal cancer and polyps: a systematic review. *BMC Gastroenterol* 2011;11:65.
69. Ratuapli SK, Bharucha AE, Noelting J, et al. Phenotypic identification and classification of functional defecatory disorders using high resolution anorectal manometry. *Gastroenterology* 2013;144:314–322.e2.
70. Tantiplachiva K, Rao P, Attaluri A, et al. Digital rectal examination is a useful tool for identifying patients with dyssynergia. *Clin Gastroenterol Hepatol* 2010;8:955–960.
71. Wong RK, Drossman DA, Bharucha AE, et al. The digital rectal examination: a multicenter survey of physicians' and students' perceptions and practice patterns. *Am J Gastroenterol* 2012;107:1157–1163.
72. Bharucha AE, Wald A. Chronic constipation. *Mayo Clin Proc* 2019;28:28.
73. Wald A. Constipation: advances in diagnosis and treatment. *JAMA* 2016;315:185–191.
74. Wald A, Bharucha AE, Cosman BC, et al. ACG clinical guidelines: management of benign anorectal disorders. *Am J Gastroenterol* 2014;109:1141–1157.
75. Rangan V, Patel R, Nee J, et al. Medication utilization and satisfaction in irritable bowel syndrome: insight from the IBS in America Survey. *Gastroenterology* 2019;156:S189–S190.
76. Chiarioni G, Kim SM, Vantini I, et al. Validation of the balloon evacuation test: reproducibility and agreement with findings from anorectal manometry and electromyography. *Clin Gastroenterol Hepatol* 2014;12:2049–2054.

77. Rao SS, Hatfield R, Soffer E, et al. Manometric tests of anorectal function in healthy adults. *Am J Gastroenterol* 1999;94:773–783.
78. Ratuapli S, Bharucha AE, Harvey D, et al. Comparison of rectal balloon expulsion test in seated and left lateral positions. *Neurogastroenterol Motil* 2013;25:e813–e820.
79. Mazor Y, Prott G, Jones M, et al. Anorectal physiology in health: a randomized trial to determine the optimum catheter for the balloon expulsion test. *Neurogastroenterol Motil* 2019;31:e13552.
80. Minguez M, Herreros B, Sanchiz V, et al. Predictive value of the balloon expulsion test for excluding the diagnosis of pelvic floor dyssynergia in constipation. *Gastroenterology* 2004;126:57–62.
81. Bharucha AE, Stroetz R, Feuerhak K, et al. A novel technique for bedside anorectal manometry in humans. *Neurogastroenterol Motil* 2015;1504–1508.
82. Lee TH, Bharucha AE. How to perform and interpret a high-resolution anorectal manometry test. *J Neurogastroenterol Motil* 2016;22:46–59.
83. Basilisco G, Bharucha AE. High-resolution anorectal manometry: an expensive hobby or worth every penny? *Neurogastroenterol Motil* 2017;29(8).
84. Gosling J, Plumb A, Taylor SA, et al. High-resolution anal manometry: repeatability, validation, and comparison with conventional manometry. *Neurogastroenterol Motil* 2019;31:e13591.
85. Grossi U, Carrington EV, Bharucha AE, et al. Diagnostic accuracy study of anorectal manometry for diagnosis of dyssynergic defecation. *Gut* 2016;65:447–455.
86. Wu GJ, Xu F, Lin L, et al. Anorectal manometry: should it be performed in a seated position? *Neurogastroenterol Motil* 2017;29(5).
87. Shorvon PJ, McHugh S, Diamant NE, et al. Defecography in normal volunteers: results and implications. *Gut* 1989;30:1737–1749.
88. Diamant NE, Kamm MA, Wald A, et al. American Gastroenterological Association medical position statement on anorectal testing techniques. *Gastroenterology* 1999;116:732–760.
89. Bharucha AE, Wald A, Enck P, et al. Functional anorectal disorders. *Gastroenterology* 2006;130:1510–1518.
90. Bharucha AE. Update of tests of colon and rectal structure and function. *J Clin Gastroenterol* 2006;40:96–103.
91. Agachan F, Pfeifer J, Wexner SD. Defecography and proctography. Results of 744 patients. *Dis Colon Rectum* 1996;39:899–905.
92. Noelting J, Bharucha AE, Lake DS, et al. Semi-automated vectorial analysis of anorectal motion by magnetic resonance defecography in healthy subjects and fecal incontinence. *Neurogastroenterol Motil* 2012;24:e467–e475.
93. Reiner CS, Tutuian R, Solopova AE, et al. MR defecography in patients with dyssynergic defecation: spectrum of imaging findings and diagnostic value. *Br J Radiol* 2011;84:136–144.
94. Tirumanisetty P, Prichard D, Fletcher JG, et al. Normal values for assessment of anal sphincter morphology, anorectal motion, and pelvic organ prolapse with MRI in healthy women. *Neurogastroenterol Motil* 2018;30:e13314.
95. Chiarioni G, Whitehead WE, Pezza V, et al. Biofeedback is superior to laxatives for normal transit constipation due to pelvic floor dyssynergia. *Gastroenterology* 2006;130:657–664.
96. Heymen S, Scarlett Y, Jones K, et al. Randomized, controlled trial shows biofeedback to be superior to alternative treatments for patients with pelvic floor dyssynergia-type constipation. *Dis Colon Rectum* 2007;50:428–441.
97. Bharucha AE, Anderson B, Bouchoucha M. More movement with evaluating colonic transit in humans. *Neurogastroenterol Motil* 2019;31:e13541.
98. Nam YS, Pikarsky AJ, Wexner SD, et al. Reproducibility of colonic transit study in patients with chronic constipation. *Dis Colon Rectum* 2001;44:86–92.
99. Staller K, Barshop K, Ananthakrishnan AN, et al. Rectosigmoid localization of radiopaque markers does not correlate with prolonged balloon expulsion in chronic constipation: results from a multicenter cohort. *Am J Gastroenterol* 2015;110:1049–1055.
100. Park SY, Khemani D, Nelson AD, et al. Rectal gas volume measured by computerized tomography identifies evacuation disorders in patients with constipation. *Clin Gastroenterol Hepatol* 2017;15:543–552.e4.
101. Burton DD, Camilleri M, Mullan BP, et al. Colonic transit scintigraphy labeled activated charcoal compared with ion exchange pellets. *J Nucl Med* 1997;38:1807–1810.
102. Rao SS, Kuo B, McCallum RW, et al. Investigation of colonic and whole gut transit with wireless motility capsule and radioopaque markers in constipation. *Clin Gastroenterol Hepatol* 2009;7:537–544.
103. Hasler WL, Saad RJ, Rao SS, et al. Heightened colon motor activity measured by a wireless capsule in patients with constipation: relation to colon transit and IBS. *Am J Physiol Gastrointest Liver Physiol* 2009;297:G1107–G1114.
104. Metcalf AM, Phillips SF, Zinsmeister AR, et al. Simplified assessment of segmental colonic transit. *Gastroenterology* 1987;92:40–47.
105. Sloots CEJ, Felt-Bersma RJF. Effect of bowel cleansing on colonic transit in constipation due to slow transit or evacuation disorder. *Neurogastroenterol Motil* 2002;14:55–61.
106. Luthra P, Burr NE, Brenner DM, et al. Efficacy of pharmacological therapies for the treatment of opioid-induced constipation: systematic review and network meta-analysis. *Gut* 2018;5(5).
107. Chun AB, Sokol MS, Kaye WH, et al. Colonic and anorectal function in constipated patients with anorexia nervosa. *Am J Gastroenterol* 1997;92:1879–1883.
108. Soares NC, Ford AC. Systematic review: the effects of fibre in the management of chronic idiopathic constipation. *Aliment Pharmacolo Ther* 2011;33:895–901.
109. Muller-Lissner SA, Kamm MA, Scarpignato C, et al. Myths and misconceptions about chronic constipation. *Am J Gastroenterol* 2005;100:232–242.

110. Tantawy SA, Kamel DM, Abdelbasset WK, et al. Effects of a proposed physical activity and diet control to manage constipation in middle-aged obese women. *Diabetes Metab Syndr Obes* 2017;10:513–519.
111. Bijkerk CJ, Muris JWM, Knottnerus JA, et al. Systematic review: the role of different types of fibre in the treatment of irritable bowel syndrome. *Aliment Pharmacol Ther* 2004;19:245–251.
112. Fenn GC, Wilkinson PD, Lee CE, et al. A general practice study of the efficacy of Regularin in functional constipation. *Br J Clin Pract* 1986;40:192–197.
113. Bijkerk CJ, de Wit NJ, Muris JWM, et al. Soluble or insoluble fibre in irritable bowel syndrome in primary care? Randomised placebo controlled trial. *BMJ* 2009;339:b3154.
114. Voderholzer WA, Schatke W, Muhldorfer BE, et al. Clinical response to dietary fiber treatment of chronic constipation. *Am J Gastroenterol* 1997;92:95–98.
115. Ford A, Suares N. Effect of laxatives and pharmacological therapies in chronic idiopathic constipation: systematic review and meta-analysis. *Gut* 2011;60:209–218.
116. Pare P, Fedorak RN. Systematic review of stimulant and nonstimulant laxatives for the treatment of functional constipation. *Can J Gastroenterol Hepatol* 2014;28:549–557.
117. DiPalma JA, Cleveland MV, McGowan J, et al. A randomized, multicenter, placebo-controlled trial of polyethylene glycol laxative for chronic treatment of chronic constipation. *Am J Gastroenterol* 2007;102:1436–1441.
118. Migeon-Duballet I, Chabin M, Gautier A, et al. Long-term efficacy and cost-effectiveness of polyethylene glycol 3350 plus electrolytes in chronic constipation: a retrospective study in a disabled population. *Curr Med Res Opin* 2006;22:1227–1235.
119. Szojda MM, Mulder CJJ, Felt-Bersma RJF. Differences in taste between two polyethylene glycol preparations. *J Gastrointest Liver Dis* 2007;16:379–381.
120. DiPalma JA, Smith JR, Cleveland MV. Overnight efficacy of polyethylene glycol laxative. *Am J Gastroenterol* 2002;97:1776–1779.
121. Nyberg C, Hendel J, Nielsen OH. The safety of osmotically acting cathartics in colonic cleansing. *Nat Rev Gastroenterol Hepatol* 2010;7:557–564.
122. Ainley EJ, Winwood PJ, Begley JP. Measurement of serum electrolytes and phosphate after sodium phosphate colonoscopy bowel preparation: an evaluation. *Dig Dis Sci* 2005;50:1319–1323.
123. Lee-Robichaud H, Thomas K, Morgan J, et al. Lactulose versus polyethylene glycol for chronic constipation. *Cochrane Database Syst Rev* 2010;7:CD007570.
124. Lederle FA, Busch DL, Mattox KM, et al. Cost-effective treatment of constipation in the elderly: a randomized double-blind comparison of sorbitol and lactulose. *Am J Med* 1990;89:597–601.
125. Wesselius-De Casparis A, Braadbaart S, Bergh-Bohlken GE, et al. Treatment of chronic constipation with lactulose syrup: results of a double-blind study. *Gut* 1968;9:84–86.
126. Skoog SM, Bharucha AE, Camilleri M, et al. Effects of an osmotically active agent on colonic transit. *Neurogastroenterol Motil* 2006;18:300–306.
127. Ewe K, Holker B. [The effect of a diphenolic laxative (Bisacodyl) on water- and electrolyte transport in the human colon (author's transl)]. *Klin Wochenschr* 1974;52:827–833.
128. van Gorkom BA, de Vries EG, Karrenbeld A, et al. Review article: anthranoid laxatives and their potential carcinogenic effects. *Aliment Pharmacol Ther* 1999;13:443–452.
129. Mueller-Lissner S, Kamm MA, Wald A, et al. Multicenter, 4-week, double-blind, randomized, placebo-controlled trial of sodium picosulfate in patients with chronic constipation. *Am J Gastroenterol* 2010;105:897–903.
130. Kamm MA, Mueller-Lissner S, Wald A, et al. Oral bisacodyl is effective and well-tolerated in patients with chronic constipation. *Clin Gastroenterol Hepatol* 2011;9:577–583.
131. McRorie JW, Daggy BP, Morel JG, et al. Psyllium is superior to docusate sodium for treatment of chronic constipation. *Aliment Pharmacol Ther* 1998;12:491–497.
132. Johanson JF, Ueno R. Lubiprostone, a locally acting chloride channel activator, in adult patients with chronic constipation: a double-blind, placebo-controlled, dose-ranging study to evaluate efficacy and safety.[see comment]. *Aliment Pharmacol Ther* 2007;25:1351–1361.
133. Waldman SA, Tenenbaum R, Foehl HC, et al. Blunted evoked prouroguanylin endocrine secretion in chronic constipation. *Clin Transl Gastroenterol* 2019;10:e00016.
134. Castro J, Harrington AM, Hughes PA, et al. Linaclotide inhibits colonic nociceptors and relieves abdominal pain via guanylate cyclase-C and extracellular cyclic guanosine 3',5'-monophosphate. *Gastroenterology* 2013;145:1334–1346; e1–e11.
135. Lembo AJ, Schneier HA, Shiff SJ, et al. Two randomized trials of linaclotide for chronic constipation. *N Engl J Med* 2011;365:527–536.
136. Schoenfeld P, Lacy BE, Chey WD, et al. Low-dose linaclotide (72 µg) for chronic idiopathic constipation: a 12-week, randomized, double-blind, placebo-controlled trial. *Am J Gastroenterol* 2018;113:105–114.
137. DeMicco M, Barrow L, Hickey B, et al. Randomized clinical trial: efficacy and safety of plecanatide in the treatment of chronic idiopathic constipation. *Therap Adv Gastroenterol* 2017;10:837–851.
138. Miner PB Jr, Koltun WD, Wiener GJ, et al. A randomized phase III clinical trial of plecanatide, a uroguanylin analog, in patients with chronic idiopathic constipation. *Am J Gastroenterol* 2017;112:613–621.
139. Shah ED, Kim HM, Schoenfeld P. Efficacy and tolerability of guanylate cyclase-C agonists for irritable bowel syndrome with constipation and chronic idiopathic constipation: a systematic review and meta-analysis. *Am J Gastroenterol* 2018;113:329–338.
140. Chey WD, Lembo AJ, Rosenbaum DP. Tenapanor treatment of patients with constipation-predominant irritable bowel syndrome: a phase 2, randomized, placebo-controlled efficacy and safety trial. *Am J Gastroenterol* 2017;112:763–774.



141. Black CJ, Burr NE, Quigley EMM, et al. Efficacy of secretagogues in patients with irritable bowel syndrome with constipation: systematic review and network meta-analysis. *Gastroenterology* 2018;155:1753–1763.
142. Ardelyx Receives FDA Approval for IBSRELA® (Tenapanor), an NHE3 sodium transport inhibitor, for the treatment of irritable bowel syndrome with constipation. Available at: <https://www.prnewswire.com/news-releases/ardelyx-receives-fda-approval-for-ibsrela-tenapanor-an-nhe3-sodium-transport-inhibitor-for-the-treatment-of-irritable-bowel-syndrome-with-constipation-300917407.html>. Published September 12, 2019. Accessed February 23, 2020.
143. Omer A, Quigley EMM. An update on prucalopride in the treatment of chronic constipation. *Therap Adv Gastroenterol* 2017;10:877–887.
144. Piessevaux H, Corazziari E, Rey E, et al. A randomized, double-blind, placebo-controlled trial to evaluate the efficacy, safety, and tolerability of long-term treatment with prucalopride. *Neurogastroenterol Motil* 2015;27:805–815.
145. US Food and Drug Administration, Sloan Pharma. ZELNORM™ (tegaserod maleate): For the treatment of Irritable Bowel Syndrome with Constipation (IBS-C). FDA Joint Meeting of the Gastrointestinal Drugs Advisory Committee and Drug Safety and Risk Management Advisory Committee Briefing Document. Sloan Pharma, US WorldMeds. Available at: <https://www.fda.gov/media/119013/download>. Published October 17, 2018. Accessed February 23, 2020.
146. Ford AC, Quigley EM, Lacy BE, et al. Efficacy of prebiotics, probiotics, and synbiotics in irritable bowel syndrome and chronic idiopathic constipation: systematic review and meta-analysis. *Am J Gastroenterol* 2014;109:1547–1561; quiz 1546, 1562.
147. Attaluri A, Donahoe R, Valestin J, et al. Randomised clinical trial: dried plums (prunes) vs. psyllium for constipation. *Aliment Pharmacol Ther* 2011;33:822–828.
148. Cheng CW, Bian ZX, Zhu LX, et al. Efficacy of a Chinese herbal proprietary medicine (hemp seed pill) for functional constipation. *Am J Gastroenterol* 2011;106:120–129.
149. Zhong LLD, Cheng CW, Kun W, et al. Efficacy of MaZiRenWan, a Chinese herbal medicine, in patients with functional constipation in a randomized controlled trial. *Clin Gastroenterol Hepatol* 2019;17:1303–1310. e18.
150. Nelson AD, Camilleri M, Chirapongsathorn S, et al. Comparison of efficacy of pharmacological treatments for chronic idiopathic constipation: a systematic review and network meta-analysis. *Gut* 2017;66:1611–1622.
151. Luthra P, Camilleri M, Burr NE, et al. Efficacy of drugs in chronic idiopathic constipation: a systematic review and network meta-analysis. *Lancet Gastroenterol Hepatol* 2019;29:29.
152. Narayanan SP, Bharucha AE. A practical guide to biofeedback therapy for pelvic floor disorders. *Curr Gastroenterol Rep* 2019;21(5):21.
153. Chiotakakou-Faliakou E, Kamm MA, Roy AJ, et al. Biofeedback provides long-term benefit for patients with intractable, slow and normal transit constipation. *Gut* 1998;42:517–521.
154. Rao SS, Seaton K, Miller M, et al. Randomized controlled trial of biofeedback, sham feedback, and standard therapy for dyssynergic defecation. *Clin Gastroenterol Hepatol* 2007;5:331–338.
155. Wilkinson-Smith V, Bharucha AE, Emmanuel A, et al. When all seems lost: management of refractory constipation—surgery, rectal irrigation, percutaneous endoscopic colostomy, and more. *Neurogastroenterol Motil* 2018;30:e13352.
156. Knowles CH, Grossi U, Chapman M, et al. Surgery for constipation: systematic review and practice recommendations: results I: colonic resection. *Colorectal Dis* 2017;19(Suppl 3):17–36.
157. Muthyala A, Feuerhak KJ, Harmsen WS, et al. Effects of psychosensory stimulation on anal pressures: effects of alfuzosin. *Neurogastroenterol Motil* 2019;31:e13618.
158. Dinning PG, Fuentealba SE, Kennedy ML, et al. Sacral nerve stimulation induces pan-colonic propagating pressure waves and increases defecation frequency in patients with slow-transit constipation. *Colorectal Dis* 2007;9:123–132.
159. Pilkington SA, Emmett C, Knowles CH, et al. Surgery for constipation: systematic review and practice recommendations: Results V: sacral nerve stimulation. *Colorectal Dis* 2017;19(Suppl 3):92–100.
160. Dinning PG, Hunt L, Patton V, et al. Treatment efficacy of sacral nerve stimulation in slow transit constipation: a two-phase, double-blind randomized controlled crossover study. *Am J Gastroenterol* 2015;110:733–740.
161. Patton V, Stewart P, Lubowski DZ, et al. Sacral nerve stimulation fails to offer long-term benefit in patients with slow-transit constipation. *Dis Colon Rectum* 2016;59:878–885.
162. Zerbib F, Siproudhis L, Lehur PA, et al. Randomized clinical trial of sacral nerve stimulation for refractory constipation. *Br J Surg* 2017;104:205–213.
163. Yiannakou Y, Etherson K, Close H, et al. A randomized double-blinded sham-controlled cross-over trial of tined-lead sacral nerve stimulation testing for chronic constipation. *Eur J Gastroenterol Hepatol* 2019;31:653–660.
164. Grossi U, Knowles CH, Mason J, et al. Surgery for constipation: systematic review and practice recommendations: results II: hitching procedures for the rectum (rectal suspension). *Colorectal Dis* 2017;19(Suppl 3):37–48.
165. Grossi U, Horrocks EJ, Mason J, et al. Surgery for constipation: systematic review and practice recommendations: Results IV: recto-vaginal reinforcement procedures. *Colorectal Dis* 2017;19(Suppl 3):73–91.
166. Emmett CD, Close HJ, Yiannakou Y, et al. Trans-anal irrigation therapy to treat adult chronic functional constipation: systematic review and meta-analysis. *BMC Gastroenterol* 2015;15:139.

167. Etherson KJ, Minty I, Bain IM, et al. Transanal irrigation for refractory chronic idiopathic constipation: patients perceive a safe and effective therapy. *Gastroenterol Res Pract* 2017;2017:3826087.
168. Emmett C, Close H, Mason J, et al. Low-volume versus high-volume initiated trans-anal irrigation therapy in adults with chronic constipation: study protocol for a randomised controlled trial. *Trials* 2017;18:151.
169. Lembo AJ, Kurtz CB, MacDougall JE, et al. Efficacy of linaclotide for patients with chronic constipation. *Gastroenterology* 2010;138:886–895.
170. Rao S, Lembo AJ, Shiff SJ, et al. A 12-week, randomized, controlled trial with a 4-week randomized withdrawal period to evaluate the efficacy and safety of linaclotide in irritable bowel syndrome with constipation. *Am J Gastroenterol* 2012;107:1714–1724; quiz 1725.

---

Received August 2, 2019. Accepted December 24, 2019.

**Correspondence**

Address correspondence to: Adil E. Bharucha, MBBS, MD, AGAF, Division of Gastroenterology and Hepatology, Mayo Clinic, 200 First Street SW, Rochester, Minnesota 55905. e-mail: [bharucha.adil@mayo.edu](mailto:bharucha.adil@mayo.edu); fax: 507-538-5820.

**Acknowledgments**

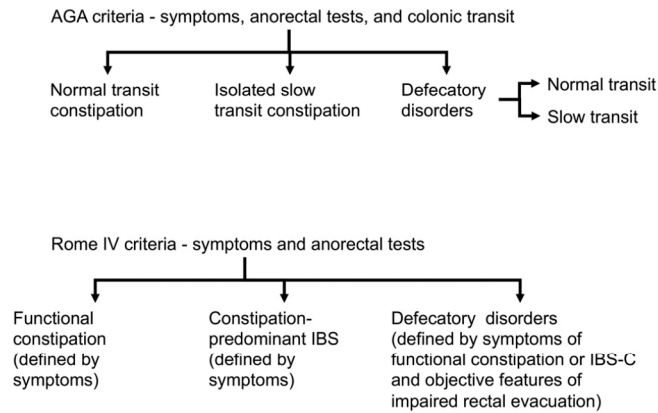
Author contributions: Drs Bharucha and Lacy jointly drafted the manuscript and approved the final version. 2019 Mayo Foundation for Medical Education and Research.

**Conflicts of interest**

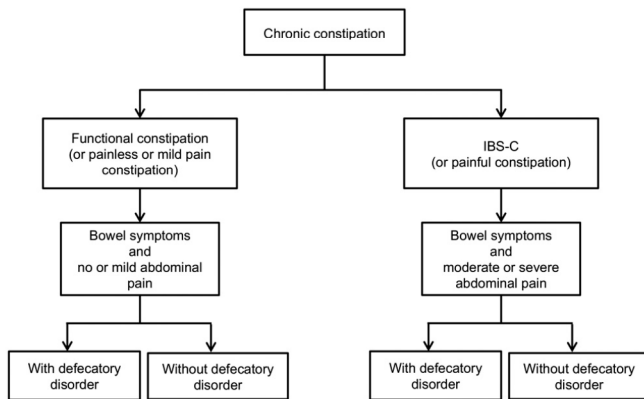
The authors disclose the following: Adil E. Bharucha: Intellectual property and royalties (Medspira, Medtronic). Brian Lacy: Scientific advisory boards (Salix, Ironwood, Takeda), consultant (Viver).

**Funding**

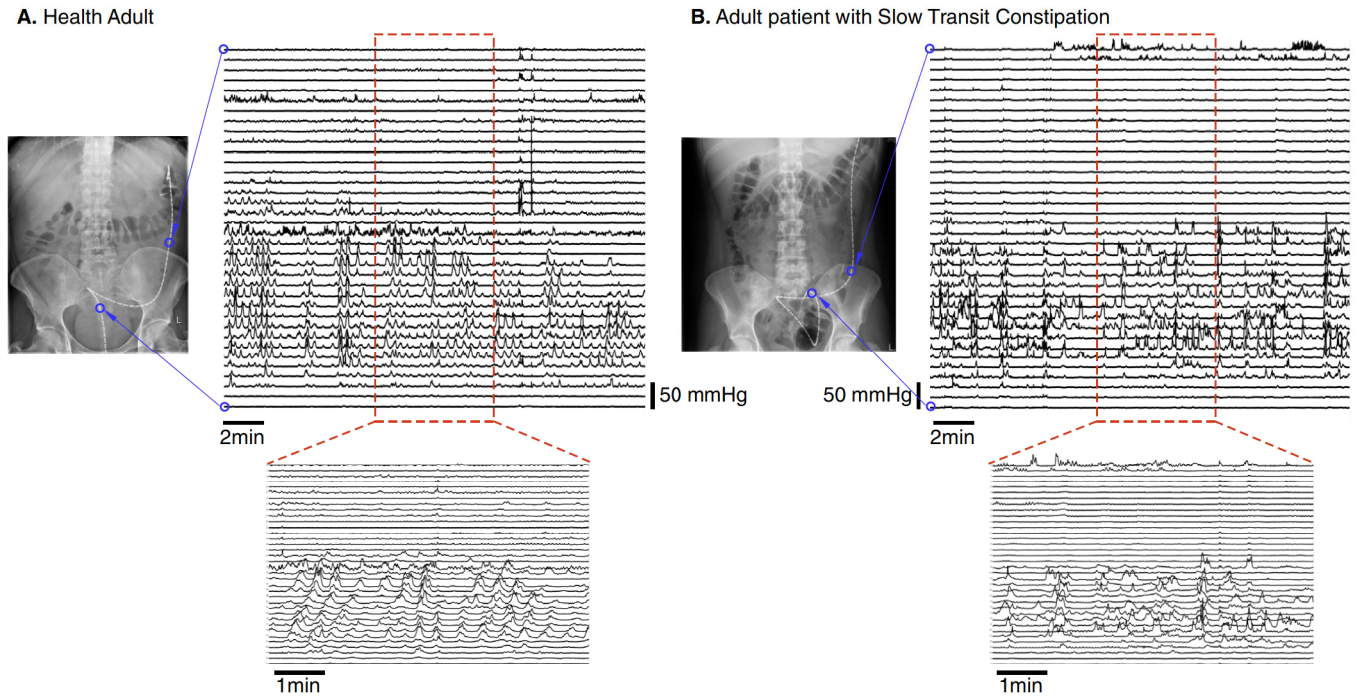
This work was supported in part by US Public Health Service grant R01 DK78924.



**Supplementary Figure 1.** American Gastroenterological Association (AGA) (*upper panel*) and Rome IV classifications (*lower panel*) of chronic constipation.



**Supplementary Figure 2.** Revised classification of chronic constipation into painless and painful constipation.



**Supplementary Figure 3.** Comparison of colonic high-resolution manometry tracings in a healthy person (*left panel*) and a constipated patient (*right panel*). Both tracings were recorded approximately 40 minutes after the meal. Observe nicely coordinated, propagating events occurring at approximately 2–3 cpm in the healthy person. In the patient, there is more chaotic activity at 2–3 cpm activity. Courtesy of Dr Phil Dinning.

**Supplementary Table 1.** Medications Associated With Constipation

Class	Examples
5-HT <sub>3</sub> -receptor antagonists	Ondansetron
Analgesics	
Opiates <sup>a</sup>	Morphine
Nonsteroidal anti-inflammatory agents <sup>a</sup>	Ibuprofen
Anticholinergic agents	Librax, belladonna
Tricyclic antidepressants <sup>a</sup>	Amitriptyline > nortriptyline
Antiparkinsonian drugs	Benzatropine
Antipsychotics	Chlorpromazine
Antispasmodics <sup>a</sup>	Dicyclomine
Antihistamine <sup>a</sup>	Diphenhydramine
Anticonvulsants <sup>a</sup>	Carbamazepine
Antihypertensives	
Calcium channel blockers	Verapamil, nifedipine
Diuretics <sup>a,b</sup>	Furosemide
Centrally acting	Clonidine
Antiarrhythmics	Amiodarone
$\beta$ -adrenoceptor antagonist	Atenolol
Bile acid sequestrants	Cholestyramine, colestipol
Cation-containing agents	
Aluminum <sup>a</sup>	Antacids, sucralfate
Calcium	Antacids, supplements
Bismuth	
Iron supplements	Ferrous sulfate
Lithium	
Chemotherapy agents	
Vinca alkaloids	Vincristine
Alkylating agents	Cyclophosphamide
Miscellaneous compounds	Barium sulfate, oral contraceptives, polystyrene resins
Endocrine medications	Pamidronate and alendronic acid
Other antidepressants	Monoamine oxidase inhibitors
Other antipsychotics	Clozapine, haloperidol, risperidone
Other antiparkinsonian drugs	Dopamine agonists
Other antispasmodics	Mebeverine, peppermint oil
Sympathomimetics	Ephedrine, terbutaline

NOTE. From Bharucha et al,<sup>4</sup> adapted with permission.

5-HT, 5-hydroxytryptamine.

<sup>a</sup>Drugs associated with constipation in community-based studies.<sup>157,158</sup>

<sup>b</sup>Perhaps related to electrolyte disturbances.