



(12) **United States Patent**  
**Knudsen et al.**

(10) **Patent No.:** **US 6,458,924 B2**  
(45) **Date of Patent:** **\*Oct. 1, 2002**

(54) **DERIVATIVES OF GLP-1 ANALOGS**  
(75) Inventors: **Liselotte Bjerre Knudsen, Valby (DK); Per Olaf Huusfeldt, København K (DK); Per Franklin Nielsen, Værløse (DK)**

5,614,492 A 3/1997 Habener ..... 514/12  
5,869,602 A \* 2/1999 Jonassen ..... 530/308  
5,912,229 A 6/1999 Thim et al. .... 514/12

(73) Assignee: **Novo Nordisk A/S, Bagsvaerd (DK)**  
(\* ) Notice: Subject to any disclaimer, the term of this patent is extended or adjusted under 35 U.S.C. 154(b) by 0 days.

**FOREIGN PATENT DOCUMENTS**

EP	0 619 322 A2	10/1994
EP	0 658 568	6/1995
EP	0 708 179	4/1996
GB	1 202 607	8/1970
WO	WO 87/06941	11/1987
WO	WO 90/11296	10/1990
WO	WO 91/11457	8/1991
WO	WO 95/07931	3/1995
WO	WO 95/31214	11/1995
WO	WO 95/32730	12/1995
WO	96/29342	* 9/1996
WO	WO 96/29342	9/1996
WO	WO 96/29344	9/1996
WO	WO 97/31943	9/1997
WO	WO 98/08871	3/1998
WO	98/08871	* 3/1998
WO	WO 98/08873	3/1998
WO	WO 98/08531	5/1998
WO	WO 98/19698	5/1998

This patent is subject to a terminal disclaimer.

(21) Appl. No.: **09/398,111**

(22) Filed: **Sep. 16, 1999**

**Related U.S. Application Data**

(63) Continuation-in-part of application No. 09/265,141, filed on Mar. 8, 1999, now Pat. No. 6,384,016, and a continuation-in-part of application No. 09/258,750, filed on Feb. 26, 1999, now Pat. No. 6,268,343, which is a continuation-in-part of application No. 09/038,432, filed on Mar. 11, 1998, now abandoned, which is a continuation-in-part of application No. 08/918,810, filed as application No. PCT/DK97/00340 on Aug. 22, 1997, now abandoned.  
(60) Provisional application No. 60/035,904, filed on Jan. 24, 1997, provisional application No. 60/036,226, filed on Jan. 25, 1997, provisional application No. 60/036,255, filed on Jan. 24, 1997, provisional application No. 60/078,422, filed on Mar. 18, 1998, provisional application No. 60/082,478, filed on Apr. 21, 1998, provisional application No. 60/082,479, filed on Apr. 21, 1998, provisional application No. 60/082,480, filed on Apr. 21, 1998, provisional application No. 60/082,802, filed on Apr. 23, 1998, and provisional application No. 60/084,357, filed on May 5, 1998.

**Foreign Application Priority Data**

Aug. 30, 1996	(DK)	0931/96
Nov. 8, 1996	(DK)	1259/96
Dec. 20, 1996	(DK)	1470/96
Feb. 27, 1998	(DK)	0263/98
Feb. 27, 1998	(DK)	0264/98
Feb. 27, 1998	(DK)	0268/98
Feb. 27, 1998	(DK)	0272/98
Feb. 27, 1998	(DK)	0274/98
Mar. 13, 1998	(EP)	98610006
Apr. 8, 1998	(DK)	0508/98
Apr. 8, 1998	(DK)	0509/98
Apr. 8, 1998	(DK)	1998 00507

(51) **Int. Cl.**<sup>7</sup> ..... **A61K 38/16; A61K 38/26**

(52) **U.S. Cl.** ..... **530/324; 530/345; 514/2; 514/12**

(58) **Field of Search** ..... **514/2, 12; 530/324, 530/345**

(56) **References Cited**

**U.S. PATENT DOCUMENTS**

5,118,666 A	6/1992	Habener	514/12
5,120,712 A	6/1992	Habener	514/12
5,380,872 A	1/1995	Sugg et al.	548/498
5,512,549 A	4/1996	Chen et al.	514/12
5,545,618 A	8/1996	Buckley et al.	514/12

**OTHER PUBLICATIONS**

Broderick, *Diabetologia* (1995) vol. 38, No. Suppl. 1, pp. A171. Meeting Info.: 31st Annual Meeting of the European Association for the Study of Diabetes Stockholm, Sweden Sep. 12-16, 1995.\*  
M. Gutniak et al., *Antidiabetogenic Effect of Glucagon-Like Peptide (7-36) Amide in Normal Subjects and Patients with Diabetes with Diabetes Mellitus.*  
M. Navarro et al., *Changes in Food Intake Induced by GLP-1(7-36) Amide In the Rat, Abstracts of the 15<sup>th</sup> International Diabetes Federation Congress, Nov. 6-11, 1194 Kobe, poster presentation 11A SPP1295 Issued 1994.*  
R. Schick et al., "Glucagon-like peptide 1—a novel brain peptide Involved in feeding regulation "Obesity in Europe 1993, Chapter 53, pp. 363-367.  
P.D. Lambert et al., "A Role for GLP-1(7-36)NH<sub>2</sub> in the Central Control Of Feeding Behavior" *Digestion* 1994; vol. 54. pp. 360-361.  
B. Willms et al., "Gastric Emptying, Glucose Responses, and Insulin Secretion after a Liquid Test Meal:Effects of Exogenous Glucagon-Like Peptide-1 (GLP-1) (7-36) Amide in Type 2 (Noninsulin-Dependent) Diabetic Patients" *Journal of Clinical Endocrinology and Metabolism* vol. 8 No. 1 (1996) pp. 327-332.

(List continued on next page.)

*Primary Examiner*—Christopher S. F. Low  
*Assistant Examiner*—David Lukton  
(74) *Attorney, Agent, or Firm*—Reza Green, Esq.; Richard Bork, Esq.

(57) **ABSTRACT**

The present invention relates to a pharmaceutical composition comprising a GLP-1 derivative having a lipophilic substituent; and a surfactant.

**20 Claims, 1 Drawing Sheet**

## OTHER PUBLICATIONS

- M. Tang-Christensen et al., "Central Administration of GLP-1 (7-36) Amide Inhibits Food and Water Intake in Rats", The American Physiological Society (1996) 271:R848-R856.
- Zhili Wang et al., "Glucagon-like Peptide-1 Is a Physiological Incretin in Rat" J. Clin. Invest. The American Society for Clin vol. 95. pp. 417-421, Jan. (1995).
- C. Ørskov, "Glucagon-like peptide-1, a new hormone of the entero-insular Axis" Diabetologia vol. 35:pp. 701-711 (1992).
- Gutzwiller et al., Abstract "Glucagon-like peptide-1 is a physiologic regulator of food intake in human" Gastroenterology (1997) vol. 12 (4, Supp.S):PA1153.
- Ranganath et al., "Attenuated GLP-1 secretion in obesity:cause or con-Sequence" Gur vol. 38: pp. 916-919 (1996).
- Marx J. "Obesity gene discover may help solve weighty problem" [news]. Science, (Dec. 2, 1994) 266 (5190) pp. 1477-1478.
- Zhang et al. "Positional cloning of the mouse obese gene and its human Homologue". Nature, (Dec. 1, 1994) 372 (6505) pp. 425-432.
- Rink T.J., "In search of a satiety factor". Nature, (Dec. 1, 1994) 372 (6505) pp. 406-407.
- Woods et al., "Signals that regulate food intake and energy Homeostasis". Science, 280:1378-1383, May 29, 1998.
- Thorens T. "Glucagon-like peptide-1 and control of insulin secretion". Diabete & Metabolisme (Paris). 1995, 21, pp. 311-318.
- Henriksen et al. Peptide amidation by chemical protein engineering A combination of enzymic and photochemical synthesis. J. AM Chem. Soc. (1992), 114 (5), pp. 1876-1877.
- Wang et al. "Glucagon-like peptide-1 is a physiological incretin in rat". J. Clin. Invest., (Jan 1995) (1) 417-21.
- Bell et al. "Exon duplication and divergence in the human Proglucagon gene". Nature, (Jul. 28-Aug. 3, 1983).
- Wettergren et al. "Truncated GLP-1 (proglucagon 78-107-amide) inhibits gastric and pancreatic functions in man". Digest. Dis. Sci., (Apr. 1993) 38 (4) 665-73.
- Suzuki et al. "Comparison of the effects of various C-terminal and N-terminal fragment peptides of glucagons-like peptide-1 on insulin and glucagons release from the isolated perfused rat pancreas". Endocrinology, (Dec. 1989) 125(6) 3109-14.
- Navarro et al., Journal of Neurochemistry, vol. 67, No. 5, pp. 1982-1991 (Nov. 1996).
- Turton et al., Nature, vol. 379, pp. 69-72 (Jan. 4, 1996).
- Kim et al., (1994) J. of Pharma. Sciences 83(8):1175-1180.
- Clodfelter et al., (1998) Pharmaceutical Res. 15(2):254-262.
- W.B. Gratzer et al., "Relation Between Conformation and Association State" The Journal of Biological Chemistry, 244, No. 24, Dec. 25, 1969, pp. 6675-6679.
- Sasaki et al., "X-Ray Analysis of Glucagon and Its Relationship to Receptor Binding", Nature Vo. 257, Oct. 30, 1975, pp. 751-757.
- Wagman et al., "Proton NMR Studies Of The Association And Folding of Glucagon In Solution", Elsevier/North-Holland Biomedical Press, vol. 119, No. 2, Oct. 1980, pp. 265-270.
- Epand et al., "Molecular Interactions In The Model Lipoprotein Complex Formed Between Glucagon and Dimyristoylglycerophosphocholine", Biochemistry vol. 16, No. 20, 1977.
- Schneider et al., "Polypeptide Hormone Interaction" (Glucagon Binding To Lysolecithin), The Journal of Biological Chemistry, Vo. 247, No. 16, Aug. 25, 1972, pp. 4986-4991.
- Schneider et al., "Polypeptide Hormone Interaction" (Conformational Changes of Glucagon Bound To Lysolecithin), The Journal of Biological Chemistry, Vo. 247, No. 16, Aug. 25, 1972, pp. 4992-4995.
- Robinson et al., "Lipid-Induced Conformational Changes in Glucagon, Secretin, and Vasoactive Intestinal Peptide", Biopolymers, vol. 21, 1982, pp. 1217-1228.
- Hamed et al., "Behavior of Amphipathic Helices on Analysis Via Matrix Methods, With Application to Glucagon, Secretin, and Vasoactive Intestinal Peptide", Biopolymers, vol. 22, 1983, pp. 1003-1021.
- Wu et al., "Helical Conformation of Glucagon in Surfactant Solutions", American Chemical Society, 1980, pp. 2117-2122.
- Bösch et al., "Physicochemical Characterization of Glucagon-Containing Lipid Micelles" Biochimic et Biophysica Acta, 603 (1980) pp. 298-312.
- Thornton et al., Structure of Glucagon-Like Peptide(7-36) Amide in a Dodecylphosphocholine Micelle as Determined by 2D NMR, Biochemistry 1994, 33, pp. 3532-3539.

\* cited by examiner

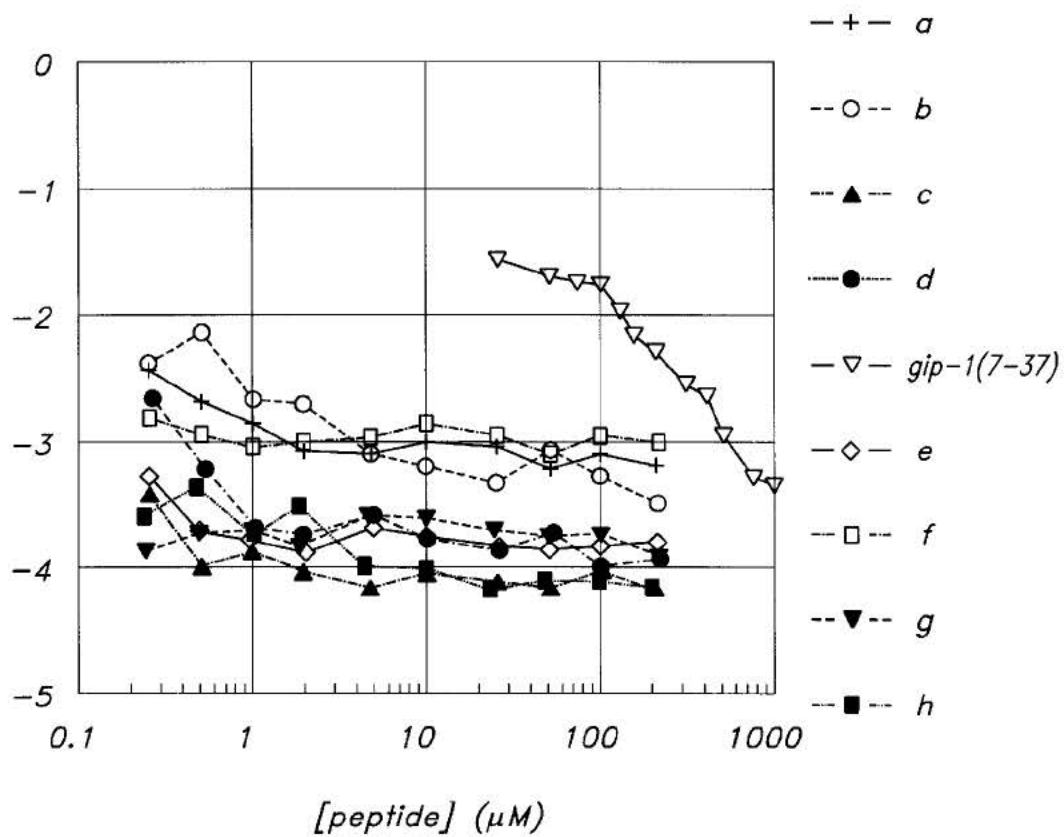


FIG. 1

## DERIVATIVES OF GLP-1 ANALOGS

## CROSS-REFERENCE TO RELATED APPLICATIONS

This application is a continuation-in-part of Ser. No. 09/265,141 filed Mar. 8, 1999 now U.S. Pat. No. 6,384,016 and of Ser. No. 09/258,750 filed Feb. 26, 1999 now U.S. Pat. No. 6,268,343 which is a continuation-in-part of Ser. No. 09/038,432 filed Mar. 11, 1998 now abandoned which is a continuation-in-part of Ser. No. 08/918,810 filed Aug. 26, 1997 now abandoned, which is a 371 and of PCT application Ser. No. PCT/DK97/00340 filed Aug. 22, 1997, and claims priority of U.S. provisional application Ser. Nos. 60/035,904, 60/036,226, 60/036,255, 60/078,422, 60/082,478, 60/082,479, 60/082,480, 60/082,802, and 60/084,357 filed Jan. 24, 1997, Jan. 25, 1997, Jan. 24, 1997, Mar. 18, 1998, Apr. 21, 1998, Apr. 21, 1998, Apr. 21, 1998, Apr. 23, 1998, and May 5, 1998, respectively, and of Danish application serial nos. 0931/96, 1259/96, 1470/96, 0263/98, 0264/98, 0268/98, 0272/98, 0274/98, 0507/98, 0508/98, and 0509/98 filed Aug. 30, 1996, Nov. 8, 1996, Dec. 20, 1996, Feb. 27, 1998, Feb. 27, 1998, Feb. 27, 1998, Feb. 27, 1998, Feb. 27, 1998, Apr. 8, 1998, Apr. 8, 1998 and Apr. 8, 1998, respectively, and of European application no. 98610006.3 filed Mar. 13, 1998, the contents of each of which is fully incorporated herein by reference.

## FIELD OF THE INVENTION

The present invention relates to novel derivatives of human glucagon-like peptide-1 (GLP-1) and fragments and/or analogues thereof which have a protracted profile of action and to methods of making and using them.

## BACKGROUND OF THE INVENTION

Peptides are widely used in medical practice, and since they can be produced by recombinant DNA technology it can be expected that their importance will increase also in the years to come. When native peptides or analogues thereof are used in therapy it is generally found that they have a high clearance. A high clearance of a therapeutic agent is inconvenient in cases where it is desired to maintain a high blood level thereof over a prolonged period of time since repeated administrations will then be necessary. Examples of peptides which have a high clearance are: ACTH, corticotropin-releasing factor, angiotensin, calcitonin, insulin, glucagon, glucagon-like peptide-1, glucagon-like peptide-2, insulin-like growth factor-1, insulin-like growth factor-2, gastric inhibitory peptide, growth hormone-releasing factor, pituitary adenylate cyclase activating peptide, secretin, enterogastrin, somatostatin, somatotropin, somatomedin, parathyroid hormone, thrombopoietin, erythropoietin, hypothalamic releasing factors, prolactin, thyroid stimulating hormones, endorphins, enkephalins, vasopressin, oxytocin, opioids and analogues thereof, superoxide dismutase, interferon, asparaginase, arginase, arginine deaminase, adenosine deaminase and ribonuclease. In some cases it is possible to influence the release profile of peptides by applying suitable pharmaceutical compositions, but this approach has various shortcomings and is not generally applicable.

The hormones regulating insulin secretion belong to the so-called enteroinsular axis, designating a group of hormones, released from the gastrointestinal mucosa in response to the presence and absorption of nutrients in the gut, which promote an early and potentiated release of insulin. The enhancing effect on insulin secretion, the

so-called incretin effect, is probably essential for a normal glucose tolerance. Many of the gastrointestinal hormones, including gastrin and secretin (cholecystokinin is not insulinotropic in man), are insulinotropic, but the only physiologically important ones, those that are responsible for the incretin effect, are the glucose-dependent insulinotropic polypeptide, GIP, and glucagon-like peptide-1 (GLP-1). Because of its insulinotropic effect, GIP, isolated in 1973 (1) immediately attracted considerable interest among diabetologists. However, numerous investigations carried out during the following years clearly indicated that a defective secretion of GIP was not involved in the pathogenesis of insulin dependent diabetes mellitus (IDDM) or non insulin-dependent diabetes mellitus (NIDDM) (2). Furthermore, as an insulinotropic hormone, GIP was found to be almost ineffective in NIDDM (2). The other incretin hormone, GLP-1 is the most potent insulinotropic substance known (3). Unlike GIP, it is surprisingly effective in stimulating insulin secretion in NIDDM patients. In addition, and in contrast to the other insulinotropic hormones (perhaps with the exception of secretin) it also potently inhibits glucagon secretion. Because of these actions it has pronounced blood glucose lowering effects particularly in patients with NIDDM.

GLP-1, a product of the proglucagon (4), is one of the youngest members of the secretin-VIP family of peptides, but is already established as an important gut hormone with regulatory function in glucose metabolism and gastrointestinal secretion and metabolism (5). The glucagon gene is processed differently in the pancreas and in the intestine. In the pancreas (9), the processing leads to the formation and parallel secretion of 1) glucagon itself, occupying positions 33-61 of proglucagon (PG); 2) an N-terminal peptide of 30 amino acids (PG (1-30)) often called glicentin-related pancreatic peptide, GRPP (10, 11); 3) a hexapeptide corresponding to PG (64-69); 4) and, finally, the so-called major proglucagon fragment (PG (72-158)), in which the two glucagon-like sequences are buried (9). Glucagon seems to be the only biologically active product. In contrast, in the intestinal mucosa, it is glucagon that is buried in a larger molecule, while the two glucagon-like peptides are formed separately (8). The following products are formed and secreted in parallel: 1) glicentin, corresponding to PG (1-69), with the glucagon sequence occupying residues Nos. 33-61 (12); 2) GLP-1(7-36)amide (PG (78-107))amide (13), not as originally believed PG (72-107)amide or 108, which is inactive). Small amounts of C-terminally glycine-extended but equally bioactive GLP-1(7-37), (PG (78-108)) are also formed (14); 3) intervening peptide-2 (PG (111-122)amide) (15); and 4) GLP-2 (PG (126-158)) (15, 16). A fraction of glicentin is cleaved further into GRPP (PG (1-30)) and oxyntomodulin (PG (33-69)) (17, 18). Of these peptides, GLP-1, has the most conspicuous biological activities.

Being secreted in parallel with glicentin/enteroglucagon, it follows that the many studies of enteroglucagon secretion (6, 7) to some extent also apply to GLP-1 secretion, but GLP-1 is metabolised more quickly with a plasma half-life in humans of 2 min (19). Carbohydrate or fat-rich meals stimulate secretion (20), presumably as a result of direct interaction of yet unabsorbed nutrients with the microvilli of the open-type L-cells of the gut mucosa. Endocrine or neural mechanisms promoting GLP-1 secretion may exist but have not yet been demonstrated in humans.

The incretin function of GLP-1(29-31) has been clearly illustrated in experiments with the GLP-1 receptor antagonist, exendin 9-39, which dramatically reduces the

3

incretin effect elicited by oral glucose in rats (21, 22). The hormone interacts directly with the  $\beta$  cells via the GLP-1 receptor (23) which belongs to the glucagon/VIP/calcitonin family of G-protein-coupled 7-transmembrane spanning receptors. The importance of the GLP-1 receptor in regulating insulin secretion was illustrated in recent experiments in which a targeted disruption of the GLP-1 receptor gene was carried out in mice. Animals homozygous for the disruption had greatly deteriorated glucose tolerance and fasting hyperglycaemia, and even heterozygous animals were glucose intolerant (24). The signal transduction mechanism (25) primarily involves activation of adenylate cyclase, but elevations of intracellular  $\text{Ca}^{2+}$  are also essential (25, 26). The action of the hormone is best described as a potentiation of glucose stimulated insulin release (25), but the mechanism that couples glucose and GLP-1 stimulation is not known. It may involve a calcium-induced calcium release (26, 27). As already mentioned, the insulinotropic action of GLP-1 is preserved in diabetic  $\beta$ -cells. The relation of the latter to its ability to convey "glucose competence" to isolated insulin-secreting cells (26, 28), which respond poorly to glucose or GLP-1 alone, but fully to a combination of the two, is also not known. Equally importantly, however, the hormone also potently inhibits glucagon secretion (29). The mechanism is not known, but seems to be paracrine, via neighbouring insulin or somatostatin cells (25). Also the glucagonostatic action is glucose-dependent, so that the inhibitory effect decreases as blood glucose decreases. Because of this dual effect, if the plasma GLP-1 concentrations increase either by increased secretion or by exogenous infusion the molar ratio of insulin to glucagon in the blood that reaches the liver via the portal circulation is greatly increased, whereby hepatic glucose production decreases (30). As a result blood glucose concentrations decrease. Because of the glucose dependency of the insulinotropic and glucagonostatic actions, the glucose lowering effect is self-limiting, and the hormone, therefore, does not cause hypoglycaemia regardless of dose (31). The effects are preserved in patients with diabetes mellitus (32), in whom infusions of slightly supraphysiological doses of GLP-1 may completely normalise blood glucose values in spite of poor metabolic control and secondary failure to sulphonylurea (33). The importance of the glucagonostatic effect is illustrated by the finding that GLP-1 also lowers blood glucose in type-1 diabetic patients without residual  $\beta$ -cell secretory capacity (34).

In addition to its effects on the pancreatic islets, GLP-1 has powerful actions on the gastrointestinal tract. Infused in physiological amounts, GLP-1 potently inhibits pentagastrin-induced as well as meal-induced gastric acid secretion (35, 36). It also inhibits gastric emptying rate and pancreatic enzyme secretion (36). Similar inhibitory effects on gastric and pancreatic secretion and motility may be elicited in humans upon perfusion of the ileum with carbohydrate- or lipid-containing solutions (37, 38). Concomitantly, GLP-1 secretion is greatly stimulated, and it has been speculated that GLP-1 may be at least partly responsible for this so-called "ileal-brake" effect (38). In fact, recent studies suggest that, physiologically, the ileal-brake effects of GLP-1 may be more important than its effects on the pancreatic islets. Thus, in dose response studies GLP-1 influences gastric emptying rate at infusion rates at least as low as those required to influence islet secretion (39).

GLP-1 seems to have an effect on food intake. Intravenous administration of GLP-1 profoundly inhibits food intake in rats (40, 42). This effect seems to be highly

4

specific. Thus, N-terminally extended GLP-1(PG 72-107) amide is inactive and appropriate doses of the GLP-1 antagonist, exendin 9-39, abolish the effects of GLP-1(41). Acute, peripheral administration of GLP-1 does not inhibit food intake acutely in rats (41, 42). However, it remains possible that GLP-1 secreted from the intestinal L-cells may also act as a satiety signal.

Not only the insulinotropic effects but also the effects of GLP-1 on the gastrointestinal tract are preserved in diabetic patients (43), and may help curtailing meal-induced glucose excursions, but, more importantly, may also influence food intake. Administered intravenously, continuously for one week, GLP-1 at 4 ng/kg/min has been demonstrated to dramatically improve glycaemic control in NIDDM patients without significant side effects (44). The peptide is fully active after subcutaneous administration (45), but is rapidly degraded mainly due to degradation by dipeptidyl peptidase IV-like enzymes (46, 47).

The amino acid sequence of GLP-1 is given i.a. by Schmidt et al. (*Diabetologia* 28 704-707 (1985)). Human GLP-1 is a 37 amino acid residue peptide originating from proglucagon which is synthesised, i.a. in the L-cells in the distal ileum, in the pancreas and in the brain. Processing of proglucagon to GLP-1(7-36)amide, GLP-1(7-37) and GLP-2 occurs mainly in the L-cells. Although the interesting pharmacological properties of GLP-1(7-37) and analogues thereof have attracted much attention in recent years only little is known about the structure of these molecules. The secondary structure of GLP-1 in micelles has been described by Thorton et al. (*Biochemistry* 33 3532-3539 (1994)), but in normal solution, GLP-1 is considered a very flexible molecule. Surprisingly, we found that derivatisation of this relatively small and very flexible molecule resulted in compounds whose plasma profile were highly protracted and still had retained activity.

GLP-1 and analogues of GLP-1 and fragments thereof are useful i.a. in the treatment of Type 1 and Type 2 diabetes and obesity.

WO 87/06941 discloses GLP-1 fragments, including GLP-1(7-37), and functional derivatives thereof and to their use as an insulinotropic agent.

WO 90/11296 discloses GLP-1 fragments, including GLP-1(7-36), and functional derivatives thereof which have an insulinotropic activity which exceeds the insulinotropic activity of GLP-1(1-36) or GLP-1(1-37) and to their use as insulinotropic agents.

The amino acid sequence of GLP-1(7-36) and GLP-1(7-37) is (SEQ ID NO: 1):

```

7  8  9 10 11 12 13 14 15 16 17      (I)
His-Ala-Glu-Gly-Thr-Phe-Thr-Ser-Asp-Val-Ser-
18 19 20 21 22 23 24 25 26 27 28
Ser-Tyr-Leu-Glu-Gly-Gln-Ala-Ala-Lys-Glu-Phe-
29 30 31 32 33 34 35 36
Ile-Ala-Trp-Leu-Val-Lys-Gly-Arg-X

```

wherein X is  $\text{NH}_2$  for GLP-1(7-36) and X is Gly for GLP-1(7-37).

WO 91/11457 discloses analogues of the active GLP-1 peptides 7-34, 7-35, 7-36, and 7-37 which can also be useful as GLP-1 moieties.

EP 0708179-A2 (Eli Lilly & Co.) discloses GLP-1 analogues and derivatives that include an N-terminal imidazole group and optionally an unbranched  $\text{C}_6$ - $\text{C}_{10}$  acyl group in attached to the lysine residue in position 34.

EP 0699686-A2 (Eli Lilly & Co.) discloses certain N-terminal truncated fragments of GLP-1 that are reported to be biologically active.

Unfortunately, the high clearance limits the usefulness of these compounds. Thus there still is a need for improvements in this field.

Accordingly, it is an object of the present invention to provide derivatives of GLP-1 and analogues thereof which have a protracted profile of action relative to GLP-1(7-37).

It is a further object of the invention to provide derivatives of GLP-1 and analogues thereof which have a lower clearance than GLP-1(7-37).

It is a further object of the invention to provide a pharmaceutical composition with improved solubility and stability.

#### References

- Pederson RA. Gastric Inhibitory Polypeptide. In Walsh JH, Dockray GJ (eds) Gut peptides: Biochemistry and Physiology. Raven Press, New York 1994, pp. 217-259.
- Krarup T. Immunoreactive gastric inhibitory polypeptide. *Endocr Rev* 1988; 9: 122-134.
- Ørskov C. Glucagon-like peptide-1, a new hormone of the enteroinsular axis. *Diabetologia* 1992; 35:701-711.
- Bell GI, Sanchez-Pescador R, Laybourn PJ, Najarian RC. Exon duplication and divergence in the human proglucagon gene. *Nature* 1983; 304: 368-371.
- Holst JJ. Glucagon-like peptide-1 (GLP-1)—a newly discovered GI hormone. *Gastroenterology* 1994; 107: 1848-1855.
- Holst JJ. Gut glucagon, enteroglucagon, gut GLI, glicentin—current status. *Gastroenterology* 1983; 84:1602-1613.
- Holst JJ, Ørskov C. Glucagon and other proglucagon-derived peptides. In Walsh JH, Dockray GJ, eds. Gut peptides: Biochemistry and Physiology. Raven Press, New York, pp. 305-340, 1993.
- Ørskov C, Hoist JJ, Knuhtsen S, Baldissera FGA, Poulsen SS, Nielsen OV. Glucagon-like peptides GLP-1 and GLP-2, predicted products of the glucagon gene, are secreted separately from the pig small intestine, but not pancreas. *Endocrinology* 1986; 119:1467-1475.
- Hoist JJ, Bersani M, Johnsen AH, Kofod H, Hartmann B, Ørskov C. Proglucagon processing in porcine and human pancreas. *J Biol Chem*, 1994; 269: 18827-1883.
- Moody AJ, Hoist JJ, Thim L, Jensen SL. Relationship of glicentin to proglucagon and glucagon in the porcine pancreas. *Nature* 1981; 289: 514-516.
- Thim L, Moody AJ. Purification and chemical characterisation of a glicentin-related pancreatic peptide (proglucagon fragment) from porcine pancreas. *Biochim Biophys Acta* 1982; 703:134-141.
- Thim L, Moody AJ. The primary structure of glicentin (proglucagon). *Regul Pept* 1981; 2:139-151.
- Ørskov C, Bersani M, Johnsen AH, Højrup P, Holst JJ. Complete sequences of glucagon-like peptide-1 (GLP-1) from human and pig small intestine. *J. Biol. Chem.* 1989; 264:12826-12829.
- Ørskov C, Rabenhøj L, Kofod H, Wettergren A, Holst JJ. Production and secretion of amidated and glycine-extended glucagon-like peptide-I (GLP-1) in man. *Diabetes* 1991; 43: 535-539.
- Buhl T, Thim L, Kofod H, Ørskov C, Harling H, & Holst JJ: Naturally occurring products of proglucagon 111-160 in the porcine and human small intestine. *J. Biol. Chem.* 1988; 263:8621-8624.
- Ørskov C, Buhl T, Rabenhøj L, Kofod H, Holst JJ: Carboxypeptidase-B-like processing of the C-terminus of glucagon-like peptide-2 in pig and human small intestine. *FEBS letters*, 1989; 247:193-106.
- Holst JJ. Evidence that enteroglucagon (II) is identical with the C-terminal sequence (residues 33-69) of glicentin. *Biochem J.* 1980; 187:337-343.
- Bataille D, Tatemoto K, Gespach C, Jörnvall H, Rosselin G, Mutt V. Isolation of glucagon-37 (bioactive enteroglucagon/oxyntomodulin) from porcine jejunum. Characterisation of the peptide. *FEBS Lett* 1982; 146:79-86.
- Ørskov C, Wettergren A, Holst JJ. The metabolic rate and the biological effects of GLP-1 7-36amide and GLP-1 7-37 in healthy volunteers are identical. *Diabetes* 1993; 42:658-661.
- Elliott RM, Morgan LM, Tredger JA, Deacon S, Wright J, Marks V. Glucagon-like peptide-1 (7-36)amide and glucose-dependent insulinotropic polypeptide secretion in response to nutrient ingestion in man: acute post-prandial and 24-h secretion patterns. *J Endocrinol* 1993; 138: 159-166.
- Kolligs F, Fehmann HC, Göke R, Göke B. Reduction of the incretin effect in rats by the glucagon-like peptide-1 receptor antagonist exendin (9-39)amide. *Diabetes* 1995; 44: 16-19.
- Wang Z, Wang RM, Owji AA, Smith DM, Ghatei M, Bloom SR. Glucagon-like peptide-1 is a physiological incretin in rat. *J. Clin. Invest.* 1995; 95: 417-421.
- Thorens B. Expression cloning of the pancreatic b cell receptor for the gluco-incretin Is hormone glucagon-like peptide 1. *Proc Natl Acad Sci* 1992; 89:8641-4645.
- Scrocchi L, Auerbach AB, Joyner AL, Drucker DJ. Diabetes in mice with targeted disruption of the GLP-1 receptor gene. *Diabetes* 1996; 45: 21A.
- Fehmann HC, Göke R, Göke B. Cell and molecular biology of the incretin hormones glucagon-like peptide-I (GLP-1) and glucose-dependent insulin releasing polypeptide (GIP). *Endocrine Reviews*, 1995; 16: 390-410.
- Gromada J, Dissing S, Bokvist K, Renström E, Frøjaer-Jensen J, Wulff BS, Rorsman P. Glucagon-like peptide I increases cytoplasmic calcium in insulin-secreting bTC3-cells by enhancement of intracellular calcium mobilisation. *Diabetes* 1995; 44: 767-774.
- Holz GG, Leech CA, Habener JF. Activation of a cAMP-regulated Ca<sup>2+</sup>-signaling pathway in pancreatic β-cells by the insulinotropic hormone glucagon-like peptide-1. *J Biol Chem*, 1996; 270: 17749-17759.
- Holz GG, Kühltreiber WM, Habener JF. Pancreatic beta-cells are rendered glucose competent by the insulinotropic hormone glucagon-like peptide-1(7-37). *Nature* 1993; 361:362-365.
- Ørskov C, Holst JJ, Nielsen OV: Effect of truncated glucagon-like peptide-1 (proglucagon 78-107 amide) on endocrine secretion from pig pancreas, antrum and stomach. *Endocrinology* 1988; 123:2009-2013.
- Hvidberg A, Toft Nielsen M, Hilsted J, Ørskov C, Hoist JJ. Effect of glucagon-like peptide-1 (proglucagon 78-107 amide) on hepatic glucose production in healthy man. *Metabolism* 1994; 43:104-108.
- Qualmann C, Nauck M, Hoist JJ, Ørskov C, Creutzfeldt W. Insulinotropic actions of intravenous glucagon-like peptide-1 [7-36 amide] in the fasting state in healthy subjects. *Acta Diabetologica*, 1995; 32: 13-16.
- Nauck MA, Heimesaat MM, Ørskov C, Hoist JJ, Ebert R, Creutzfeldt W. Preserved incretin activity of GLP-1 (7-36 amide) but not of synthetic human GIP in patients with type 2-diabetes mellitus. *J Clin Invest* 1993; 91:301-307.

33. Nauck MA, Kleine N, Ørskov C, Hoist JJ, Willms B, Creutzfeldt W. Normalisation of fasting hyperglycaemia by exogenous GLP-1(7-36 amide) in type 2-diabetic patients. *Diabetologia* 1993; 36:741-744.
34. Creutzfeldt W, Kleine N, Willms B, Ørskov C, Hoist JJ, Nauck MA. Glucagonostatic actions and reduction of fasting hyperglycaemia by exogenous glucagon-liem, peptide-1 (7-36 amide) in type I diabetic patients. *Diabetes Care* 1996; 19: 580-586.
35. Schjoldager BTG, Mortensen PE, Christiansen J, Ørskov C, Hoist JJ. GLP-1 (glucagon-like peptide-1) and truncated GLP-1, fragments of human proglucagon, inhibit gastric acid secretion in man. *Dig. Dis. Sci.* 1989; 35:703-708.
36. Wettergren A, Schjoldager B, Mortensen PE, Myhre J, Christiansen J, Holst JJ. Truncated GLP-1(proglucagon 72-107 amide) inhibits gastric and pancreatic functions in man. *Dig Dis Sci* 1993; 38:665-673.
37. Layer P, Hoist JJ, Grandt D, Goebell H: Ileal release of glucagon-like peptide-1 (GLP-1): association with inhibition of gastric acid in humans. *Dig Dis Sci* 1995; 40: 1074-1082.
38. Layer P, Holst JJ. GLP-1: A humoral mediator of the ileal brake in humans? *Digestion* 1993; 54: 385-386.
39. Nauck M, Ettl R, Niedereichholz U, Ørskov C, Hoist JJ, Schmiegel W. Inhibition of gastric emptying by GLP-1(7-36 amide) or (7-37): effects on postprandial glycaemia and insulin secretion. *Abstract. Gut* 1995; 37 (suppl. 2): A124.
40. Schick RR, vorm Walde T, Zimmermann JP, Schusdziarra V, Classen M. Glucagon-like peptide 1—a novel brain peptide involved in feeding regulation. in Ditschuneit H, Gries FA, Hauner H, Schusdziarra V, Wechsler JG (eds.) *Obesity in Europe*. John Libbey & Company Ltd, 1994; pp. 363-367.
41. Tang-Christensen M, Larsen PJ, Gøke R, Fink-Jensen A, Jessop DS, Møller M, Sheikh S. Brain GLP-1(7-36) amide receptors play a major role in regulation of food and water intake. *Am. J. Physiol.*, 1996, in press.
42. Turton MD, O'Shea D, Gunn I, Beak SA, Edwards CMB, Meeran K, et al. A role for glucagon-like peptide-1 in the regulation of feeding. *Nature* 1996; 379: 69-72.
43. Willms B, Werner J, Creutzfeldt W, Ørskov C, Holst JJ, Nauck M. Inhibition of gastric emptying by glucagon-like peptide-1 (7-36 amide) in patients with type-2-diabetes mellitus. *Diabetologia* 1994; 37, suppl.1: A118.
44. Larsen J, Jallad N, Damsbo P. One-week continuous infusion of GLP-1(7-37) improves glycaemic control in NIDDM. *Diabetes* 1996; 45, suppl. 2: 233A.
45. Ritzel R, Ørskov C, Hoist JJ, Nauck MA. Pharmacokinetic, insulinotropic, and glucagonostatic properties of GLP-1 [7-36 amide] after subcutaneous injection in healthy volunteers. Dose-response relationships. *Diabetologia* 1995; 38: 720-725.
46. Deacon CF, Johnsen AH, Hoist JJ. Degradation of glucagon-like peptide-1 by human plasma in vitro yields an N-terminally truncated peptide that is a major endogenous metabolite in vivo. *J Clin Endocrinol Metab* 1995; 80: 952-957.
47. Deacon CF, Nauck MA, Toft-Nielsen M, Pridal L, Willms B, Holst JJ. 1995. Both subcutaneous and intravenously administered glucagon-like peptide-1 are rapidly degraded from the amino terminus in type II diabetic patients and in healthy subjects. *Diabetes* 44: 1126-1131.

#### SUMMARY OF THE INVENTION

The present invention relates to a pharmaceutical composition with improved solubility and stability comprising

derivatives of GLP-1(1-45) and analogs and/or fragments thereof. The GLP-1 derivatives of the present invention have interesting pharmacological properties, in particular they have a more protracted profile of action than the parent peptides. The GLP-1 derivatives of the present invention also have insulinotropic activity, ability to decrease glucagon, ability to suppress gastric motility, ability to restore glucose competency to beta-cells, and/or ability to suppress appetite/reduce weight.

#### BRIEF DESCRIPTION OF THE FIGURES

FIG. 1 shows the results of Circular Dichroism (CD) at 222 nm as a function of peptide concentration for native GLP-1(7-37) and various GLP-1 derivatives of the present invention.

#### DETAILED DESCRIPTION OF THE INVENTION

A simple system is used to describe fragments and analogues of GLP-1. For example, Gly<sup>8</sup>GLP-1(7-37) designates a peptide which relates to GLP-1 by the deletion of the amino acid residues at positions. 1 to 6 and substituting the naturally occurring amino acid residue in position 8 (Ala) by Gly. Similarly, Lys<sup>34</sup>(N<sup>68</sup>-tetradecanoyl) GLP-1(7-37) designates GLP-1(7-37) wherein the ε-amino group of the Lys residue in position 34 has been tetradecanoylated. Where reference in this text is made to C-terminally extended GLP-1 analogues, the amino acid residue in position 38 is Arg unless otherwise indicated, the amino acid residue in position 39 is also Arg unless otherwise indicated and the optional amino acid residue in position 40 is Asp unless otherwise indicated. Also, if a C-terminally extended analogue extends to position 41, 42, 43, 44 or 45, the amino acid sequence of this extension is as in the corresponding sequence in human proglucagon unless otherwise indicated.

#### GLP-1 Analogs

The term "an analogue" is defined herein as a peptide wherein one or more amino acid residues of the parent peptide have been substituted by another amino acid residue. In a preferred embodiment, the total number of different amino acids between the GLP-1 derivative and the corresponding native form of GLP-1 is up to fifteen, preferably up to ten amino acid residues, and most preferably up to six amino acid residues.

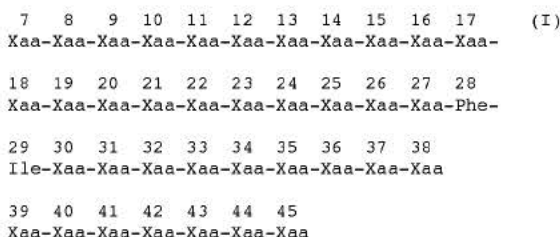
The total number of different amino acids between the derivative of the GLP-1 analog and the corresponding native form of GLP-1 preferably does not exceed six. Preferably, the number of different amino acids is five. More preferably, the number of different amino acids is four. Even more preferably, the number of different amino acids is three. Even more preferably, the number of different amino acids is two. Most preferably, the number of different amino acids is one. In order to determine the number of different amino acids, one should compare the amino acid sequence of the GLP-1 derivative of the present invention with the corresponding native GLP-1. For example, there are two different amino acids between the derivative Gly<sup>8</sup>Arg<sup>26</sup>Lys<sup>34</sup>(N<sup>68</sup>-(7-deoxycholoyl)) GLP-1(7-40) and the corresponding native GLP-1(i.e., GLP-1(7-40)). The differences are located at positions 8 and 26. Similarly, there is only one different amino acid between the derivative Lys<sup>26</sup>(N<sup>68</sup>-(7-deoxycholoyl))Arg<sup>34</sup>GLP-1(7-40) and the corresponding native GLP-1. The difference is located at position 34.

In a preferred embodiment, the present invention relates to a GLP-1 derivative wherein the parent peptide is GLP-1

9

(1-45) or an analogue thereof. In a further preferred embodiment, the parent peptide is GLP-1(1-35), GLP-1(1-36), GLP-1(1-36)amide, GLP-1(1-37), GLP-1(1-38), GLP-1(1-39), GLP-1(1-40), GLP-1(1-41) or an analogue thereof.

In a preferred embodiment, the present invention relates to derivatives of GLP-1 analogues of formula I (SEQ ID NO:2):



wherein

Xaa at position 7 is His, a modified amino acid or is deleted,

Xaa at position 8 is Ala, Gly, Ser, Thr, Leu, Ile, Val, Glu, Asp, or Lys, or is deleted,

Xaa at position 9 is Glu, Asp, or Lys, or is deleted,

Xaa at position 10 is Gly or is deleted,

Xaa at position 11 is Thr, Ala, Gly, Ser, Leu, Ile, Val, Glu, Asp, or Lys, or is deleted,

Xaa at position 12 is Phe or is deleted,

Xaa at position 13 is Thr or is deleted,

Xaa at position 14 is Ser, Ala, Gly, Thr, Leu, Ile, Val, Glu, Asp, or Lys, or is deleted,

Xaa at position 15 is Asp or is deleted,

Xaa at position 16 is Val, Ala, Gly, Ser, Thr, Leu, Ile, Tyr, Glu, Asp, or Lys, or is deleted,

Xaa at position 17 is Ser, Ala, Gly, Thr, Leu, Ile, Val, Glu, Asp, or Lys, or is deleted,

Xaa at position 18 is Ser, Ala, Gly, Thr, Leu, Ile, Val, Glu, Asp, or Lys,

Xaa at position 19 is Tyr, Phe, Trp, Glu, Asp, or Lys,

Xaa at position 20 is Leu, Ala, Gly, Ser, Thr, Leu, Ile, Val, Glu, Asp, or Lys,

Xaa at position 21 is Glu, Asp, or Lys,

Xaa at position 22 is Gly, Ala, Ser, Thr, Leu, Ile, Val, Glu, Asp, or Lys,

Xaa at position 23 is Gln, Asn, Arg, Glu, Asp, or Lys,

Xaa at position 24 is Ala, Gly, Ser, Thr, Leu, Ile, Val, Arg, Glu, Asp, or Lys,

Xaa at position 25 is Ala, Gly, Ser, Thr, Leu, Ile, Val, Glu, Asp, or Lys,

Xaa at position 26 is Lys, Arg, Gln, Glu, Asp, or His,

Xaa at position 27 is Glu, Asp, or Lys,

Xaa at position 30 is Ala, Gly, Ser, Thr, Leu, Ile, Val, Glu, Asp, or Lys,

Xaa at position 31 is Trp, Phe, Tyr, Glu, Asp, or Lys,

Xaa at position 32 is Leu, Gly, Ala, Ser, Thr, Ile, Val, Glu, Asp, or Lys,

Xaa at position 33 is Val, Gly, Ala, Ser, Thr, Leu, Ile, Glu, Asp, or Lys,

Xaa at position 34 is Lys, Arg, Glu, Asp, or His,

Xaa at position 35 is Gly, Ala, Ser, Thr, Leu, Ile, Val, Glu, Asp, or Lys,

Xaa at position 36 is Arg, Lys, Glu, Asp, or His,

Xaa at position 37 is Gly, Ala, Ser, Thr, Leu, Ile, Val, Glu, Asp, or Lys, or is deleted,

Xaa at position 38 is Arg, Lys, Glu, Asp, or His, or is deleted,

10

Xaa at position 39 is Arg, Lys, Glu, Asp, or His, or is deleted,

Xaa at position 40 is Asp, Glu, or Lys, or is deleted,

Xaa at position 41 is Phe, Trp, Tyr, Glu, Asp, or Lys, or is deleted,

Xaa at position 42 is Pro, Lys, Glu, or Asp, or is deleted,

Xaa at position 43 is Glu, Asp, or Lys, or is deleted,

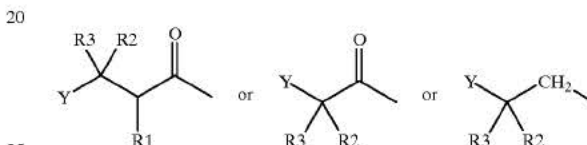
Xaa at position 44 is Glu, Asp, or Lys, or is deleted, and

Xaa at position 45 is Val, Glu, Asp, or Lys, or is deleted,

or

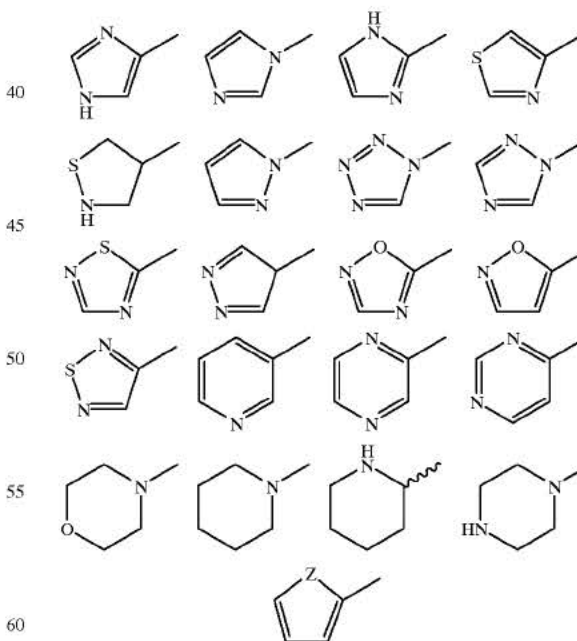
(a) a C-1-6-ester thereof, (b) amide, C-1-6-alkylamide, or C-1-6-dialkylamide thereof and/or (c) a pharmaceutically acceptable salt thereof, provided that when the amino acid at position 37, 38, 39, 40, 41, 42, 43 or 44 is deleted, then each amino acid downstream of the amino acid is also deleted and when the amino acid at position 8, 9, 10, 11, 12, 13, 14, 15, 16 or 17 is deleted then each amino acid upstream of the amino acid is also deleted.

The term "modified amino acid" is defined herein as A is:



25

wherein R<sup>1</sup>, R<sup>2</sup> and R<sup>3</sup> are independently H, lower alkyl, optionally substituted phenyl, NH<sub>2</sub>, NH—CO-(lower alkyl), —OH, lower alkoxy, halogen, SO<sub>2</sub>-(lower alkyl) or CF<sub>3</sub>, wherein said phenyl is optionally substituted with at least one group selected from NH<sub>2</sub>, —OH, lower alkyl or lower alkoxy having 1-6 carbon atoms, halogen, SO<sub>2</sub>-(lower alkyl), NH—CO-(lower alkyl) or CF<sub>3</sub>, or R<sup>1</sup> and R<sup>2</sup> may together form a bond; and Y is a five or six membered ring system selected from the group consisting of:



60

wherein Z is N, O or S, and said ring system is optionally substituted with one or more functional groups selected from the group consisting of NH<sub>2</sub>, NO<sub>2</sub>, OH, lower alkyl, lower alkoxy, halogen, CF<sub>3</sub> and aryl (i.e., optionally substituted phenyl, as defined above), provided that A is not histidine;

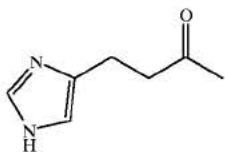
65



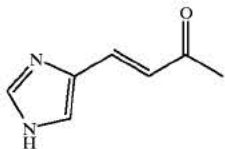
## 11

The terms "lower alkyl" and "lower alkoxy" refer to an alkyl or alkoxy group, respectively, having 1-6 carbon atoms.

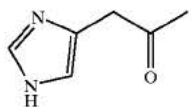
In a preferred embodiment, A is:



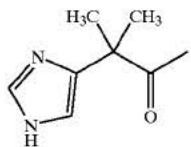
In another preferred embodiment, A is:



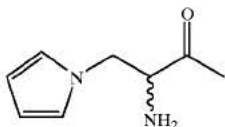
In another preferred embodiment, A is:



In another preferred embodiment, A is:



In another preferred embodiment, A is:



In another preferred embodiment, A is 4-imidazopropionyl.

In another preferred embodiment, A is 4-imidazoacetyl.

In another preferred embodiment, A is 4-imidazo- $\alpha,\alpha$ -dimethyl-acetyl.

The GLP-1 derivatives of the present invention preferably have only one or two Lys wherein the  $\epsilon$ -amino group of one or both Lys is substituted with a lipophilic substituent. Preferably, the GLP-1 derivatives of the present invention have only one Lys. In a more preferred embodiment, there is only one Lys which is located at the carboxy terminus of the derivative of the GLP-1 analogs. In an even more preferred embodiment, the GLP-1 derivatives of the present invention have only one Lys and Glu or Asp is adjacent to Lys.

In a preferred embodiment, the amino acids at positions 37-45 are absent.

In another preferred embodiment, the amino acids at positions 38-45 are absent.

In another preferred embodiment, the amino acids at positions 39-45 are absent.

## 12

In another preferred embodiment, the amino acid at position 7 is deleted.

In another preferred embodiment, the amino acids at positions 7 and 8 are deleted.

5 In another preferred embodiment, the amino acids at positions 7-9 are deleted.

In another preferred embodiment, the amino acids at positions 7-10 are deleted.

10 In another preferred embodiment, the amino acids at positions 7-11 are deleted.

In another preferred embodiment, the amino acids at positions 7-12 are deleted.

In another preferred embodiment, the amino acids at positions 7-13 are deleted.

15 In another preferred embodiment, the amino acids at positions 7-14 are deleted.

In another preferred embodiment, the amino acids at positions 7-15 are deleted.

20 In another preferred embodiment, the amino acids at positions 7-16 are deleted.

In another preferred embodiment, the amino acids at positions 7-17 are deleted.

In another preferred embodiment, Xaa at position 7 is His.

25 In another preferred embodiment, Xaa at position 8 is Ala, Gly, Ser, Thr, or Val.

In another preferred embodiment, Xaa at position 9 is Glu.

In another preferred embodiment, Xaa at position 10 is Gly.

30 In another preferred embodiment, Xaa at position 11 is Thr.

In another preferred embodiment, Xaa at position 12 is Phe.

35 In another preferred embodiment, Xaa at position 13 is Thr.

In another preferred embodiment, Xaa at position 14 is Ser.

In another preferred embodiment, Xaa at position 15 is Asp.

40 In another preferred embodiment, Xaa at position 16 is Val.

In another preferred embodiment, Xaa at position 17 is Ser.

45 In another preferred embodiment, Xaa at position 18 is Ser, Lys, Glu, or Asp.

In another preferred embodiment, Xaa at position 19 is Tyr, Lys, Glu, or Asp.

In another preferred embodiment, Xaa at position 20 is Leu, Lys, Glu, or Asp.

50 In another preferred embodiment, Xaa at position 21 is Glu, Lys, or Asp.

In another preferred embodiment, Xaa at position 22 is Gly, Glu, Asp, or Lys.

55 In another preferred embodiment, Xaa at position 23 is Gln, Glu, Asp, or Lys.

In another preferred embodiment, Xaa at position 24 is Ala, Glu, Asp, or Lys.

In another preferred embodiment, Xaa at position 25 is Ala, Glu, Asp, or Lys.

60 In another preferred embodiment, Xaa at position 26 is Lys, Glu, Asp, or Arg.

In another preferred embodiment, Xaa at position 27 is Glu, Asp, or Lys.

65 In another preferred embodiment, Xaa at position 30 is Ala, Glu, Asp, or Lys.

In another preferred embodiment, Xaa at position 31 is Trp, Glu, Asp, or Lys.



each of Xaa at positions 37–45 is deleted, and each of the other Xaa is the amino acid in native GLP-1(8-36).

In another preferred embodiment, Xaa at position 7 is a modified amino acid or is deleted, Xaa at position 34 is Arg, each of Xaa at positions 38–45 is deleted, and each of the other Xaa is the amino acid in native GLP-1(8-37).

In another preferred embodiment, Xaa at position 7 is a modified amino acid or is deleted, Xaa at position 34 is Arg, each of Xaa at positions 39–45 is deleted, and each of the other Xaa is the amino acid in native GLP-1(8-38).

In another preferred embodiment, Xaa at position 7 is a modified amino acid or is deleted, Xaa at positions 26 and 34 is Arg, Xaa at position 36 is Lys, each of Xaa at positions 37–45 is deleted, and each of the other Xaa is the amino acid in native GLP-1(8-36).

In another preferred embodiment, Xaa at position 7 is a modified amino acid or is deleted, Xaa at positions 26 and 34 is Arg, Xaa at position 36 is Lys, each of Xaa at positions 38–45 is deleted, and each of the other Xaa is the amino acid in native GLP-1(8-37).

In another preferred embodiment, Xaa at position 7 is a modified amino acid or is deleted, Xaa at positions 26 and 34 is Arg, Xaa at position 36 is Lys, each of Xaa at positions 39–45 is deleted, and each of the other Xaa is the amino acid in native GLP-1(8-38).

In another preferred embodiment, Xaa at position 7 is a modified amino acid or is deleted, Xaa at positions 26 and 34 is Arg, Xaa at position 38 is Lys, each of Xaa at positions 39–45 is deleted, and each of the other Xaa is the amino acid in native GLP-1(8-38).

In another preferred embodiment, Xaa at position 7 is a modified amino acid or is deleted, Xaa at position 8 is Thr, Ser, Gly or Val, Xaa at position 37 is Glu, Xaa at position 36 is Lys, each of Xaa at positions 38–45 is deleted, and each of the other Xaa is the amino acid in native GLP-1(8-37).

In another preferred embodiment, Xaa at position 7 is a modified amino acid or is deleted, Xaa at position 8 is Thr, Ser, Gly or Val, Xaa at position 37 is Glu, Xaa at position 36 is Lys, each of Xaa at positions 39–45 is deleted, and each of the other Xaa is the amino acid in native GLP-1(8-38).

In another preferred embodiment, Xaa at position 7 is a modified amino acid or is deleted, Xaa at position 8 is Thr, Ser, Gly or Val, Xaa at position 37 is Glu, Xaa at position 38 is Lys, each of Xaa at positions 39–45 is deleted, and each of the other Xaa is the amino acid in native GLP-1(8-38).

In another preferred embodiment, Xaa at position 7 is a modified amino acid or is deleted, Xaa at position 18, 23 or 27 is Lys, and Xaa at positions 26 and 34 is Arg, each of Xaa at positions 37–45 is deleted, and each of the other Xaa is the amino acid in native GLP-1(8-36).

In another preferred embodiment, Xaa at position 7 is a modified amino acid or is deleted, Xaa at position 18, 23 or 27 is Lys, and Xaa at positions 26 and 34 is Arg, each of Xaa at positions 38–45 is deleted, and each of the other Xaa is the amino acid in native GLP-1(8-37).

In another preferred embodiment, Xaa at position 7 is a modified amino acid or is deleted, Xaa at position 18, 23 or 27 is Lys, and Xaa at positions 26 and 34 is Arg, each of Xaa at positions 39–45 is deleted, and each of the other Xaa is the amino acid in native GLP-1(8-38).

In another preferred embodiment, Xaa at position 7 is a modified amino acid or is deleted, Xaa at position 8 is Thr, Ser, Gly, or Val, Xaa at position 18, 23 or 27 is Lys, and Xaa at position 26 and 34 is Arg, each of Xaa at positions 37–45 is deleted, and each of the other Xaa is the amino acid in native GLP-1(8-36).

In another preferred embodiment, Xaa at position 7 is a modified amino acid or is deleted, Xaa at position 8 is Thr,

Ser, Gly, or Val, Xaa at position 18, 23 or 27 is Lys, and Xaa at position 26 and 34 is Arg, each of Xaa at positions 38–45 is deleted, and each of the other Xaa is the amino acid in native GLP-1(8-37).

In another preferred embodiment, Xaa at position 7 is a modified amino acid or is deleted, Xaa at position 8 is Thr, Ser, Gly, or Val, Xaa at position 18, 23 or 27 is Lys, and Xaa at position 26 and 34 is Arg, each of Xaa at positions 39–45 is deleted, and each of the other Xaa is the amino acid in native GLP-1(8-38).

#### Derivatives

The term “derivative” is defined as a modification of one or more amino acid residues of a peptide by chemical means, either with or without an enzyme, e.g., by alkylation, acylation, ester formation, or amide formation.

#### Lipophilic Substituents

To obtain a satisfactory protracted profile of action of the GLP-1 derivative, one or more lipophilic substituents are attached to a GLP-1 moiety. The lipophilic substituents preferably comprises 4–40 carbon atoms, in particular 8–25 carbon atoms. The lipophilic substituent may be attached to an amino group of the GLP-1 moiety by means of a carboxyl group of the lipophilic substituent which forms an amide bond with an amino group of the amino acid residue to which it is attached. Preferably, the GLP-1 derivatives have three, more preferably two, and most preferably one lipophilic substituent.

In a preferred embodiment, the present invention relates to a GLP-1 derivative wherein at least one amino acid residue of the parent peptide has a lipophilic substituent attached with the proviso that if only one lipophilic substituent is present and this substituent is attached to the N-terminal or to the C-terminal amino acid residue of the parent peptide then this substituent is an alkyl group or a group which has an  $\omega$ -carboxylic acid group.

In another preferred embodiment, the present invention relates to a GLP-1 derivative having only one lipophilic substituent which substituent is an alkyl group or a group which has an  $\omega$ -carboxylic acid group and is attached to the N-terminal amino acid residue of the parent peptide.

In another preferred embodiment, the present invention relates to a GLP-1 derivative having only one lipophilic substituent which substituent is an alkyl group or a group which has an  $\omega$ -carboxylic acid group and is attached to the C-terminal amino acid residue of the parent peptide.

In another preferred embodiment, the present invention relates to a GLP-1 derivative having only one lipophilic substituent which substituent can be attached to any one amino acid residue which is not the N-terminal or C-terminal amino acid residue of the parent peptide.

In another preferred embodiment, the present invention relates to a GLP-1 derivative wherein two lipophilic substituents are present, one being attached to the N-terminal amino acid residue while the other is attached to the C-terminal amino acid residue.

In another preferred embodiment, the present invention relates to a GLP-1 derivative wherein two lipophilic substituents are present, one being attached to the N-terminal amino acid residue while the other is attached to an amino acid residue which is not N-terminal or the C-terminal amino acid residue.

In another preferred embodiment, the present invention relates to a GLP-1 derivative wherein two lipophilic substituents are present, one being attached to the C-terminal amino acid residue while the other is attached to an amino acid residue which is not the N-terminal or the C-terminal amino acid residue.

A lipophilic substituent may be attached to an amino acid residue in such a way that a carboxyl group of the lipophilic substituent forms an amide bond with an amino group of the amino acid residue. Alternatively, a lipophilic substituent may be attached to an amino acid residue in such a way that an amino group of the lipophilic substituent forms an amide bond with a carboxyl group of the amino acid residue.

In a further preferred embodiment, the present invention relates to a GLP-1 derivative wherein a lipophilic substituent is attached to the parent peptide by means of a spacer. For example, the lipophilic substituent may be attached to the GLP-1 moiety by means of a spacer in such a way that a carboxyl group of the spacer forms an amide bond with an amino group of the GLP-1 moiety.

In a most preferred embodiment, the lipophilic substituent is attached—optionally via a spacer—to the  $\epsilon$ -amino group of a Lys residue contained in the parent peptide.

In a preferred embodiment, the spacer is an  $\alpha,\omega$ -amino acid. Examples of suitable spacers are succinic acid, Lys, Glu or Asp, or a dipeptide such as Gly-Lys. When the spacer is succinic acid, one carboxyl group thereof may form an amide bond with an amino group of the amino acid residue, and the other carboxyl group thereof may form an amide bond with an amino group of the lipophilic substituent. When the spacer is Lys, Glu or Asp, the carboxyl group thereof may form an amide bond with an amino group of the amino acid residue, and the amino group thereof may form an amide bond with a carboxyl group of the lipophilic substituent. When Lys is used as the spacer, a further spacer may in some instances be inserted between the  $\epsilon$ -amino group of Lys and the lipophilic substituent. In one preferred embodiment, such a further spacer is succinic acid which forms an amide bond with the  $\epsilon$ -amino group of Lys and with an amino group present in the lipophilic substituent. In another preferred embodiment such a further spacer is Glu or Asp which forms an amide bond with the  $\epsilon$ -amino group of Lys and another amide bond with a carboxyl group present in the lipophilic substituent, that is, the lipophilic substituent is a  $N^{\epsilon}$ -acylated lysine residue. Other preferred spacers are  $N^{\epsilon}$ -( $\gamma$ -L-glutamyl),  $N^{\epsilon}$ -( $\beta$ -L-asparagyl),  $N^{\epsilon}$ -glycyl, and  $N^{\epsilon}$ -( $\alpha$ -( $\gamma$ -aminobutanoyl).

In another preferred embodiment of the present invention, the lipophilic substituent has a group which can be negatively charged. One preferred such group is a carboxylic acid group.

In a further preferred embodiment, the lipophilic substituent comprises from 4 to 40 carbon atoms, more preferred from 8 to 25 carbon atoms.

In a further preferred embodiment, the lipophilic substituent is attached to the parent peptide by means of a spacer which is an unbranched alkane  $\alpha,\omega$ -dicarboxylic acid group having from 1 to 7 methylene groups, preferably two methylene groups which spacer forms a bridge between an amino group of the parent peptide and an amino group of the lipophilic substituent.

In a further preferred embodiment, the lipophilic substituent is attached to the parent peptide by means of a spacer which is an amino acid residue except Cys, or a dipeptide such as Gly-Lys. The expression "a dipeptide such as Gly-Lys" is defined herein as a dipeptide wherein the C-terminal amino acid residue is Lys, His or Trp, preferably Lys, and wherein the N-terminal amino acid residue is selected from the group comprising Ala, Arg, Asp, Asn, Gly, Glu, Gln, Ile, Leu, Val, Phe and Pro.

In a further preferred embodiment, the lipophilic substituent is attached to the parent peptide by means of a spacer which is an amino acid residue except Cys, or is a dipeptide

such as Gly-Lys and wherein a carboxyl group of the parent peptide forms an amide bond with an amino group of a Lys residue or a dipeptide containing a Lys residue, and the other amino group of the Lys residue or a dipeptide containing a Lys residue forms an amide bond with a carboxyl group of the lipophilic substituent.

In a further preferred embodiment, the lipophilic substituent is attached to the parent peptide by means of a spacer which is an amino acid residue except Cys, or is a dipeptide such as Gly-Lys and wherein an amino group of the parent peptide forms an amide bond with a carboxylic group of the amino acid residue or dipeptide spacer, and an amino group of the amino acid residue or dipeptide spacer forms an amide bond with a carboxyl group of the lipophilic substituent.

In a further preferred embodiment, the lipophilic substituent is attached to the parent peptide by means of a spacer which is an amino acid residue except Cys, or is a dipeptide such as Gly-Lys and wherein a carboxyl group of the parent peptide forms an amide bond with an amino group of the amino acid residue spacer or dipeptide spacer, and the carboxyl group of the amino acid residue spacer or dipeptide spacer forms an amide bond with an amino group of the lipophilic substituent.

In a further preferred embodiment, the lipophilic substituent is attached to the parent peptide by means of a spacer which is an amino acid residue except Cys, or is a dipeptide such as Gly-Lys, and wherein a carboxyl group of the parent peptide forms an amide bond with an amino group of a spacer which is Asp or Glu, or a dipeptide spacer containing an Asp or Glu residue, and a carboxyl group of the spacer forms an amide bond with an amino group of the lipophilic substituent.

In a further preferred embodiment, the lipophilic substituent is a partially or completely hydrogenated cyclophenanthrene skeleton.

In a further preferred embodiment, the lipophilic substituent is a straight-chain or branched alkyl group.

In a further preferred embodiment, the lipophilic substituent is the acyl group of a straight-chain or branched fatty acid.

In a further preferred embodiment, the lipophilic substituent is an acyl group of the formula  $\text{CH}_3(\text{CH}_2)_n\text{CO}-$ , wherein  $n$  is an integer from 4 to 38, preferably an integer from 4 to 24, more preferably  $\text{CH}_3(\text{CH}_2)_6\text{CO}-$ ,  $\text{CH}_3(\text{CH}_2)_8\text{CO}-$ ,  $\text{CH}_3(\text{CH}_2)_{10}\text{CO}-$ ,  $\text{CH}_3(\text{CH}_2)_{12}\text{CO}-$ ,  $\text{CH}_3(\text{CH}_2)_{14}\text{CO}-$ ,  $\text{CH}_3(\text{CH}_2)_{16}\text{CO}-$ ,  $\text{CH}_3(\text{CH}_2)_{18}\text{CO}-$ ,  $\text{CH}_3(\text{CH}_2)_{20}\text{CO}-$  or  $\text{CH}_3(\text{CH}_2)_{22}\text{CO}-$ .

In a further preferred embodiment, the lipophilic substituent is an acyl group of a straight-chain or branched alkane  $\alpha,\omega$ -dicarboxylic acid.

In a further preferred embodiment, the lipophilic substituent is an acyl group of the formula  $\text{HOOC}(\text{CH}_2)_m\text{CO}-$ , wherein  $m$  is an integer from 4 to 38, preferably an integer from 4 to 24, more preferably  $\text{HOOC}(\text{CH}_2)_{14}\text{CO}-$ ,  $\text{HOOC}(\text{CH}_2)_{16}\text{CO}-$ ,  $\text{HOOC}(\text{CH}_2)_{18}\text{CO}-$ ,  $\text{HOOC}(\text{CH}_2)_{20}\text{CO}-$  or  $\text{HOOC}(\text{CH}_2)_{22}\text{CO}-$ .

In a further preferred embodiment, the lipophilic substituent is a group of the formula  $\text{CH}_3(\text{CH}_2)_p((\text{CH}_2)_q\text{COOH})\text{CHNH}-\text{CO}(\text{CH}_2)_2\text{CO}-$ , wherein  $p$  and  $q$  are integers and  $p+q$  is an integer of from 8 to 33, preferably from 12 to 28.

In a further preferred embodiment, the lipophilic substituent is a group of the formula  $\text{CH}_3(\text{CH}_2)_r\text{CO}-\text{NHCH}(\text{COOH})(\text{CH}_2)_2\text{CO}-$ , wherein  $r$  is an integer of from 10 to 24.

In a further preferred embodiment, the lipophilic substituent is a group of the formula  $\text{CH}_3(\text{CH}_2)_s\text{CO}-\text{NHCH}((\text{CH}_2)_2\text{COOH})\text{CO}-$ , wherein  $s$  is an integer of from 8 to 24.

In a further preferred embodiment, the lipophilic substituent is a group of the formula  $\text{COOH}(\text{CH}_2)_t\text{CO}$ — wherein  $t$  is an integer of from 8 to 24.

In a further preferred embodiment, the lipophilic substituent is a group of the formula  $\text{—NHCH}(\text{COOH})(\text{CH}_2)_4\text{NH—CO}(\text{CH}_2)_u\text{CH}_3$ , wherein  $u$  is an integer of from 8 to 18.

In a further preferred embodiment, the lipophilic substituent is a group of the formula  $\text{CH}_3(\text{CH}_2)_v\text{CO—NH}(\text{CH}_2)_z\text{—CO}$ , wherein  $n$  is an integer of from 8 to 24 and  $z$  is an integer of from 1 to 6.

In a further preferred embodiment, the lipophilic substituent is a group of the formula  $\text{—NHCH}(\text{COOH})(\text{CH}_2)_4\text{NH—COCH}((\text{CH}_2)_2\text{COOH})\text{NH—CO}(\text{CH}_2)_w\text{CH}_3$ , wherein  $w$  is an integer of from 10 to 16.

In a further preferred embodiment, the lipophilic substituent is a group of the formula  $\text{—NHCH}(\text{COOH})(\text{CH}_2)_4\text{NH—CO}(\text{CH}_2)_2\text{CH}(\text{COOH})\text{NH—CO}(\text{CH}_2)_x\text{CH}_3$ , wherein  $x$  is an integer of from 10 to 16.

In a further preferred embodiment, the lipophilic substituent is a group of the formula  $\text{—NHCH}(\text{COOH})(\text{CH}_2)_4\text{NH—CO}(\text{CH}_2)_2\text{CH}(\text{COOH})\text{NHCO}(\text{CH}_2)_y\text{CH}_3$ , wherein  $y$  is zero or an integer of from 1 to 22.

In a further preferred embodiment, the lipophilic substituent contains a group that can be negatively charged. Such a lipophilic substituent can for example be a substituent which has a carboxyl group.

#### Other Derivatives

The derivatives of GLP-1 analogues of the present invention may be in the form of one or more of (a) a C-1-6-ester, (b) an amide, C-1-6-alkylamide, or C-1-6-dialkylamide, and (c) a pharmaceutical salt. In a preferred embodiment, the derivatives of GLP-1 analogues are in the form of an acid addition salt or a carboxylate salt, most preferably in the form of an acid addition salt.

#### Preferred Derivatives of GLP-1 Analogues of the Present Invention

In a preferred embodiment, a parent peptide for a derivative of the invention is  $\text{Arg}^{26}\text{GLP-1}(7-37)$ ;  $\text{Arg}^{34}\text{GLP-1}(7-37)$ ;  $\text{Lys}^{36}\text{GLP-1}(7-37)$ ;  $\text{Arg}^{26, 34}\text{Lys}^{36}\text{GLP-1}(7-37)$ ;  $\text{Arg}^{26, 34}\text{Lys}^{38}\text{GLP-1}(7-38)$ ;  $\text{Arg}^{26, 34}\text{Lys}^{39}\text{GLP-1}(7-39)$ ;  $\text{Arg}^{26, 34}\text{Lys}^{40}\text{GLP-1}(7-40)$ ;  $\text{Arg}^{26}\text{Lys}^{36}\text{GLP-1}(7-37)$ ;  $\text{Arg}^{34}\text{Lys}^{36}\text{GLP-1}(7-37)$ ;  $\text{Arg}^{26}\text{Lys}^{36,39}\text{GLP-1}(7-39)$ ;  $\text{Arg}^{34}\text{Lys}^{36,40}\text{GLP-1}(7-40)$ ;  $\text{Arg}^{26, 34}\text{Lys}^{36,39}\text{GLP-1}(7-39)$ ;  $\text{Arg}^{26, 34}\text{Lys}^{36,40}\text{GLP-1}(7-40)$ ;  $\text{Gly}^8\text{Arg}^{26}\text{GLP-1}(7-37)$ ;  $\text{Gly}^8\text{Lys}^{36}\text{GLP-1}(7-37)$ ;  $\text{Gly}^8\text{Arg}^{26, 34}\text{Lys}^{36}\text{GLP-1}(7-37)$ ;  $\text{Gly}^8\text{Arg}^{26, 34}\text{Lys}^{39}\text{GLP-1}(7-39)$ ;  $\text{Gly}^8\text{Arg}^{26, 34}\text{Lys}^{40}\text{GLP-1}(7-40)$ ;  $\text{Gly}^8\text{Arg}^{26}\text{Lys}^{36}\text{GLP-1}(7-37)$ ;  $\text{Gly}^8\text{Arg}^{34}\text{Lys}^{36}\text{GLP-1}(7-37)$ ;  $\text{Gly}^8\text{Arg}^{26}\text{Lys}^{36,39}\text{GLP-1}(7-39)$ ;  $\text{Gly}^8\text{Arg}^{34}\text{Lys}^{36,40}\text{GLP-1}(7-40)$ ;  $\text{Gly}^8\text{Arg}^{26, 34}\text{Lys}^{36,39}\text{GLP-1}(7-39)$ ; or  $\text{Gly}^8\text{Arg}^{26, 34}\text{Lys}^{36,40}\text{GLP-1}(7-40)$ .

In a further preferred embodiment, the parent peptide is  $\text{Arg}^{26, 34}\text{Lys}^{38}\text{GLP-1}(7-38)$ ;  $\text{Arg}^{26, 34}\text{Lys}^{39}\text{GLP-1}(7-39)$ ;  $\text{Arg}^{26, 34}\text{Lys}^{40}\text{GLP-1}(7-40)$ ;  $\text{Arg}^{26, 34}\text{Lys}^{41}\text{GLP-1}(7-41)$ ;  $\text{Arg}^{26, 34}\text{Lys}^{42}\text{GLP-1}(7-42)$ ;  $\text{Arg}^{26, 34}\text{Lys}^{43}\text{GLP-1}(7-43)$ ;  $\text{Arg}^{26, 34}\text{Lys}^{44}\text{GLP-1}(7-44)$ ;  $\text{Arg}^{26, 34}\text{Lys}^{45}\text{GLP-1}(7-45)$ ;  $\text{Arg}^{26, 34}\text{Lys}^{38}\text{GLP-1}(1-38)$ ;  $\text{Arg}^{26, 34}\text{Lys}^{39}\text{GLP-1}(1-39)$ ;  $\text{Arg}^{26, 34}\text{Lys}^{40}\text{GLP-1}(1-40)$ ;  $\text{Arg}^{26, 34}\text{Lys}^{41}\text{GLP-1}(1-41)$ ;  $\text{Arg}^{26, 34}\text{Lys}^{42}\text{GLP-1}(1-42)$ ;  $\text{Arg}^{26, 34}\text{Lys}^{43}\text{GLP-1}(1-43)$ ;  $\text{Arg}^{26, 34}\text{Lys}^{44}\text{GLP-1}(1-44)$ ;  $\text{Arg}^{26, 34}\text{Lys}^{45}\text{GLP-1}(1-45)$ ;  $\text{Arg}^{26, 34}\text{Lys}^{38}\text{GLP-1}(2-38)$ ;  $\text{Arg}^{26, 34}\text{Lys}^{39}\text{GLP-1}(2-39)$ ;  $\text{Arg}^{26, 34}\text{Lys}^{40}\text{GLP-1}(2-40)$ ;  $\text{Arg}^{26, 34}\text{Lys}^{41}\text{GLP-1}(2-41)$ ;  $\text{Arg}^{26, 34}\text{Lys}^{42}\text{GLP-1}(2-42)$ ;  $\text{Arg}^{26, 34}\text{Lys}^{43}\text{GLP-1}(2-43)$ ;  $\text{Arg}^{26, 34}\text{Lys}^{44}\text{GLP-1}(2-44)$ ;  $\text{Arg}^{26, 34}\text{Lys}^{45}\text{GLP-1}(2-45)$ ;  $\text{Arg}^{26, 34}\text{Lys}^{38}\text{GLP-1}(3-38)$ ;  $\text{Arg}^{26, 34}\text{Lys}^{39}\text{GLP-1}(3-39)$ ;  $\text{Arg}^{26, 34}\text{Lys}^{40}\text{GLP-1}(3-40)$ ;  $\text{Arg}^{26, 34}\text{Lys}^{41}\text{GLP-1}(3-41)$ ;  $\text{Arg}^{26, 34}\text{Lys}^{42}\text{GLP-1}(3-42)$ ;  $\text{Arg}^{26, 34}\text{Lys}^{43}\text{GLP-1}(3-43)$ ;

$\text{Arg}^{26, 34}\text{Lys}^{44}\text{GLP-1}(3-44)$ ;  $\text{Arg}^{26, 34}\text{Lys}^{45}\text{GLP-1}(3-45)$ ;  $\text{Arg}^{26, 34}\text{Lys}^{38}\text{GLP-1}(4-38)$ ;  $\text{Arg}^{26, 34}\text{Lys}^{39}\text{GLP-1}(4-39)$ ;  $\text{Arg}^{26, 34}\text{Lys}^{40}\text{GLP-1}(4-40)$ ;  $\text{Arg}^{26, 34}\text{Lys}^{41}\text{GLP-1}(4-41)$ ;  $\text{Arg}^{26, 34}\text{Lys}^{42}\text{GLP-1}(4-42)$ ;  $\text{Arg}^{26, 34}\text{Lys}^{43}\text{GLP-1}(4-43)$ ;  $\text{Arg}^{26, 34}\text{Lys}^{44}\text{GLP-1}(4-44)$ ;  $\text{Arg}^{26, 34}\text{Lys}^{45}\text{GLP-1}(4-45)$ ;  $\text{Arg}^{26, 34}\text{Lys}^{38}\text{GLP-1}(5-38)$ ;  $\text{Arg}^{26, 34}\text{Lys}^{39}\text{GLP-1}(5-39)$ ;  $\text{Arg}^{26, 34}\text{Lys}^{40}\text{GLP-1}(5-40)$ ;  $\text{Arg}^{26, 34}\text{Lys}^{41}\text{GLP-1}(5-41)$ ;  $\text{Arg}^{26, 34}\text{Lys}^{42}\text{GLP-1}(5-42)$ ;  $\text{Arg}^{26, 34}\text{Lys}^{43}\text{GLP-1}(5-43)$ ;  $\text{Arg}^{26, 34}\text{Lys}^{44}\text{GLP-1}(5-44)$ ;  $\text{Arg}^{26, 34}\text{Lys}^{45}\text{GLP-1}(5-45)$ ;  $\text{Arg}^{26, 34}\text{Lys}^{38}\text{GLP-1}(6-38)$ ;  $\text{Arg}^{26, 34}\text{Lys}^{39}\text{GLP-1}(6-39)$ ;  $\text{Arg}^{26, 34}\text{Lys}^{40}\text{GLP-1}(6-40)$ ;  $\text{Arg}^{26, 34}\text{Lys}^{41}\text{GLP-1}(6-41)$ ;  $\text{Arg}^{26, 34}\text{Lys}^{42}\text{GLP-1}(6-42)$ ;  $\text{Arg}^{26, 34}\text{Lys}^{43}\text{GLP-1}(6-43)$ ;  $\text{Arg}^{26, 34}\text{Lys}^{44}\text{GLP-1}(6-44)$ ;  $\text{Arg}^{26, 34}\text{Lys}^{45}\text{GLP-1}(6-45)$ ;  $\text{Arg}^{26}\text{Lys}^{38}\text{GLP-1}(1-38)$ ;  $\text{Arg}^{34}\text{Lys}^{38}\text{GLP-1}(1-38)$ ;  $\text{Arg}^{26, 34}\text{Lys}^{36,38}\text{GLP-1}(1-38)$ ;  $\text{Arg}^{26}\text{Lys}^{36,38}\text{GLP-1}(7-38)$ ;  $\text{Arg}^{26, 34}\text{Lys}^{36,38}\text{GLP-1}(7-38)$ ;  $\text{Arg}^{26, 34}\text{Lys}^{38}\text{GLP-1}(7-38)$ ;  $\text{Arg}^{26}\text{Lys}^{36,38}\text{GLP-1}(1-39)$ ;  $\text{Arg}^{34}\text{Lys}^{36,38}\text{GLP-1}(1-39)$ ;  $\text{Arg}^{26, 34}\text{Lys}^{36,39}\text{GLP-1}(1-39)$ ;  $\text{Arg}^{26}\text{Lys}^{39}\text{GLP-1}(7-39)$ ;  $\text{Arg}^{34}\text{Lys}^{39}\text{GLP-1}(7-39)$  or  $\text{Arg}^{26, 34}\text{Lys}^{36,39}\text{GLP-1}(7-39)$ .

In a further preferred embodiment, the present invention relates to a GLP-1 derivative wherein the parent peptide is  $\text{Arg}^{26}\text{GLP-1}(7-37)$ ,  $\text{Arg}^{34}\text{GLP-1}(7-37)$ ,  $\text{Lys}^{36}\text{GLP-1}(7-37)$ ,  $\text{Arg}^{26, 34}\text{Lys}^{36}\text{GLP-1}(7-37)$ ,  $\text{Arg}^{26}\text{Lys}^{36}\text{GLP-1}(7-37)$ ,  $\text{Arg}^{34}\text{Lys}^{36}\text{GLP-1}(7-37)$ ,  $\text{Gly}^8\text{Arg}^{26}\text{GLP-1}(7-37)$ ,  $\text{Gly}^8\text{Arg}^{34}\text{GLP-1}(7-37)$ ,  $\text{Gly}^8\text{Lys}^{36}\text{GLP-1}(7-37)$ ,  $\text{Gly}^8\text{Arg}^{26, 34}\text{Lys}^{36}\text{GLP-1}(7-37)$ ,  $\text{Gly}^8\text{Arg}^{26, 34}\text{Lys}^{39}\text{GLP-1}(7-39)$  or  $\text{Gly}^8\text{Arg}^{26, 34}\text{Lys}^{36,39}\text{GLP-1}(7-39)$ .

In a further preferred embodiment, the present invention relates to a GLP-1 derivative wherein the parent peptide is  $\text{Arg}^{26}\text{Lys}^{38}\text{GLP-1}(7-38)$ ,  $\text{Arg}^{26, 34}\text{Lys}^{38}\text{GLP-1}(7-38)$ ,  $\text{Arg}^{26, 34}\text{Lys}^{36,38}\text{GLP-1}(7-38)$ ,  $\text{Gly}^8\text{Arg}^{26}\text{Lys}^{38}\text{GLP-1}(7-38)$  or  $\text{Gly}^8\text{Arg}^{26, 34}\text{Lys}^{36,38}\text{GLP-1}(7-38)$ .

In a further preferred embodiment, the present invention relates to a GLP-1 derivative wherein the parent peptide is  $\text{Arg}^{26}\text{Lys}^{39}\text{GLP-1}(7-39)$ ,  $\text{Arg}^{26, 34}\text{Lys}^{36,39}\text{GLP-1}(7-39)$ ,  $\text{Gly}^8\text{Arg}^{26}\text{Lys}^{39}\text{GLP-1}(7-39)$  or  $\text{Gly}^8\text{Arg}^{26, 34}\text{Lys}^{36,39}\text{GLP-1}(7-39)$ .

In a further preferred embodiment, the present invention relates to a GLP-1 derivative wherein the parent peptide is  $\text{Arg}^{34}\text{Lys}^{40}\text{GLP-1}(7-40)$ ,  $\text{Arg}^{26, 34}\text{Lys}^{36,40}\text{GLP-1}(7-40)$ ,  $\text{Gly}^8\text{Arg}^{34}\text{Lys}^{40}\text{GLP-1}(7-40)$  or  $\text{Gly}^8\text{Arg}^{26, 34}\text{Lys}^{36,40}\text{GLP-1}(7-40)$ .

In a further preferred embodiment, the present invention relates to a GLP-1 derivative wherein the parent peptide is  $\text{Arg}^{26}\text{GLP-1}(7-36)$ ;  $\text{Arg}^{34}\text{GLP-1}(7-36)$ ;  $\text{Arg}^{26, 34}\text{Lys}^{36}\text{GLP-1}(7-36)$ ;  $\text{Arg}^{26}\text{GLP-1}(7-36)$ amide;  $\text{Arg}^{34}\text{GLP-1}(7-36)$ amide;  $\text{Arg}^{26, 34}\text{Lys}^{36}\text{GLP-1}(7-36)$ amide;  $\text{Arg}^{26}\text{GLP-1}(7-37)$ ;  $\text{Arg}^{34}\text{GLP-1}(7-37)$ ;  $\text{Arg}^{26, 34}\text{Lys}^{36}\text{GLP-1}(7-37)$ ;  $\text{Arg}^{26}\text{GLP-1}(7-38)$ ;  $\text{Arg}^{34}\text{GLP-1}(7-38)$ ;  $\text{Arg}^{26, 34}\text{Lys}^{38}\text{GLP-1}(7-38)$ ;  $\text{Arg}^{26}\text{GLP-1}(7-39)$ ;  $\text{Arg}^{34}\text{GLP-1}(7-39)$ ;  $\text{Arg}^{26, 34}\text{Lys}^{39}\text{GLP-1}(7-39)$ ;

$\text{Gly}^8\text{Arg}^{26}\text{GLP-1}(7-36)$ ;  $\text{Gly}^8\text{Arg}^{34}\text{GLP-1}(7-36)$ ;  $\text{Gly}^8\text{Arg}^{26, 34}\text{Lys}^{36}\text{GLP-1}(7-36)$ ;  $\text{Gly}^8\text{Arg}^{26}\text{GLP-1}(7-36)$ amide;  $\text{Gly}^8\text{Arg}^{34}\text{GLP-1}(7-36)$ amide;  $\text{Gly}^8\text{Arg}^{26, 34}\text{Lys}^{36}\text{GLP-1}(7-36)$ amide;  $\text{Gly}^8\text{Arg}^{26}\text{GLP-1}(7-37)$ ;  $\text{Gly}^8\text{Arg}^{34}\text{GLP-1}(7-37)$ ;  $\text{Gly}^8\text{Arg}^{26, 34}\text{Lys}^{36}\text{GLP-1}(7-37)$ ;  $\text{Gly}^8\text{Arg}^{26}\text{GLP-1}(7-38)$ ;  $\text{Gly}^8\text{Arg}^{34}\text{GLP-1}(7-38)$ ;  $\text{Gly}^8\text{Arg}^{26, 34}\text{Lys}^{38}\text{GLP-1}(7-38)$ ;  $\text{Gly}^8\text{Arg}^{26}\text{GLP-1}(7-39)$ ;  $\text{Gly}^8\text{Arg}^{34}\text{GLP-1}(7-39)$ ;  $\text{Gly}^8\text{Arg}^{26, 34}\text{Lys}^{39}\text{GLP-1}(7-39)$ ;  $\text{Val}^8\text{Arg}^{26}\text{GLP-1}(7-36)$ ;  $\text{Val}^8\text{Arg}^{34}\text{GLP-1}(7-36)$ ;  $\text{Val}^8\text{Arg}^{26, 34}\text{Lys}^{36}\text{GLP-1}(7-36)$ ;  $\text{Val}^8\text{Arg}^{26}\text{GLP-1}(7-36)$ amide;  $\text{Val}^8\text{Arg}^{34}\text{GLP-1}(7-36)$ amide;  $\text{Val}^8\text{Arg}^{26, 34}\text{Lys}^{36}\text{GLP-1}(7-36)$ amide;  $\text{Val}^8\text{Arg}^{26}\text{GLP-1}(7-37)$ ;  $\text{Val}^8\text{Arg}^{34}\text{GLP-1}(7-37)$ ;  $\text{Val}^8\text{Arg}^{26, 34}\text{Lys}^{36}\text{GLP-1}(7-37)$ ;  $\text{Val}^8\text{Arg}^{26}\text{GLP-1}(7-38)$ ;  $\text{Val}^8\text{Arg}^{34}\text{GLP-1}(7-38)$ ;  $\text{Val}^8\text{Arg}^{26, 34}\text{Lys}^{38}\text{GLP-1}(7-38)$ ;  $\text{Val}^8\text{Arg}^{26}\text{GLP-1}(7-39)$ ;  $\text{Val}^8\text{Arg}^{34}\text{GLP-1}(7-39)$ ;  $\text{Val}^8\text{Arg}^{26, 34}\text{Lys}^{39}\text{GLP-1}(7-39)$ ;



38); Ser<sup>8</sup>Asp<sup>24</sup>Arg<sup>26, 34</sup>Lys<sup>23</sup>GLP-1(7-36); Ser<sup>8</sup>Asp<sup>22</sup>Arg<sup>26, 34</sup>Lys<sup>23</sup>GLP-1(7-36); Ser<sup>8</sup>Asp<sup>24</sup>Arg<sup>26, 34</sup>Lys<sup>23</sup>GLP-1(7-36)amide; Ser<sup>8</sup>Asp<sup>22</sup>Arg<sup>26, 34</sup>Lys<sup>23</sup>GLP-1(7-36)amide; Ser<sup>8</sup>Asp<sup>24</sup>Arg<sup>26, 34</sup>Lys<sup>23</sup>GLP-1(7-37); Ser<sup>8</sup>Asp<sup>24</sup>Arg<sup>26, 34</sup>Lys<sup>23</sup>GLP-1(7-38); Ser<sup>8</sup>Asp<sup>22</sup>Arg<sup>26, 34</sup>Lys<sup>23</sup>GLP-1(7-38); Arg<sup>26, 34</sup>Lys<sup>27</sup>GLP-1(7-36); Arg<sup>26, 34</sup>Lys<sup>27</sup>GLP-1(7-36)amide; Arg<sup>26, 34</sup>Lys<sup>27</sup>GLP-1(7-37); Arg<sup>26, 34</sup>Lys<sup>27</sup>GLP-1(7-38); Ser<sup>8</sup>Asp<sup>28</sup>Arg<sup>26, 34</sup>Lys<sup>27</sup>GLP-1(7-36); Ser<sup>8</sup>Asp<sup>28</sup>Arg<sup>26, 34</sup>Lys<sup>27</sup>GLP-1(7-36)amide; Ser<sup>8</sup>Asp<sup>26</sup>Arg<sup>26, 34</sup>Lys<sup>27</sup>GLP-1(7-36)amide; Ser<sup>8</sup>Asp<sup>28</sup>Arg<sup>26, 34</sup>Lys<sup>27</sup>GLP-1(7-37); Ser<sup>8</sup>Asp<sup>28</sup>Arg<sup>26, 34</sup>Lys<sup>27</sup>GLP-1(7-38); Ser<sup>8</sup>Asp<sup>26</sup>Arg<sup>26, 34</sup>Lys<sup>27</sup>GLP-1(7-38); Arg<sup>26, 34</sup>Lys<sup>18</sup>GLP-1(7-36); Arg<sup>26, 34</sup>Lys<sup>18</sup>GLP-1(7-36)amide; Arg<sup>26, 34</sup>Lys<sup>18</sup>GLP-1(7-37); Arg<sup>26, 34</sup>Lys<sup>18</sup>GLP-1(7-38); Thr<sup>8</sup>Asp<sup>19</sup>Arg<sup>26, 34</sup>Lys<sup>18</sup>GLP-1(7-36); Thr<sup>8</sup>Asp<sup>19</sup>Arg<sup>26, 34</sup>Lys<sup>18</sup>GLP-1(7-36)amide; Thr<sup>8</sup>Asp<sup>17</sup>Arg<sup>26, 34</sup>Lys<sup>18</sup>GLP-1(7-36)amide; Thr<sup>8</sup>Asp<sup>19</sup>Arg<sup>26, 34</sup>Lys<sup>18</sup>GLP-1(7-37); Thr<sup>8</sup>Asp<sup>19</sup>Arg<sup>26, 34</sup>Lys<sup>18</sup>GLP-1(7-38); Thr<sup>8</sup>Asp<sup>17</sup>Arg<sup>26, 34</sup>Lys<sup>18</sup>GLP-1(7-38); Arg<sup>26, 34</sup>Lys<sup>23</sup>GLP-1(7-36); Arg<sup>26, 34</sup>Lys<sup>23</sup>GLP-1(7-36)amide; Arg<sup>26, 34</sup>Lys<sup>23</sup>GLP-1(7-37); Arg<sup>26, 34</sup>Lys<sup>23</sup>GLP-1(7-38); Thr<sup>8</sup>Asp<sup>24</sup>Arg<sup>26, 34</sup>Lys<sup>23</sup>GLP-1(7-36); Thr<sup>8</sup>Asp<sup>22</sup>Arg<sup>26, 34</sup>Lys<sup>23</sup>GLP-1(7-36)amide; Thr<sup>8</sup>Asp<sup>24</sup>Arg<sup>26, 34</sup>Lys<sup>23</sup>GLP-1(7-37); Thr<sup>8</sup>Asp<sup>24</sup>Arg<sup>26, 34</sup>Lys<sup>23</sup>GLP-1(7-38); Thr<sup>8</sup>Asp<sup>22</sup>Arg<sup>26, 34</sup>Lys<sup>23</sup>GLP-1(7-38); Arg<sup>26, 34</sup>Lys<sup>27</sup>GLP-1(7-36); Arg<sup>26, 34</sup>Lys<sup>27</sup>GLP-1(7-36)amide; Arg<sup>26, 34</sup>Lys<sup>27</sup>GLP-1(7-37); Arg<sup>26, 34</sup>Lys<sup>27</sup>GLP-1(7-38); Thr<sup>8</sup>Asp<sup>28</sup>Arg<sup>26, 34</sup>Lys<sup>27</sup>GLP-1(7-36); Thr<sup>8</sup>Asp<sup>28</sup>Arg<sup>26, 34</sup>Lys<sup>27</sup>GLP-1(7-36)amide; Thr<sup>8</sup>Asp<sup>26</sup>Arg<sup>26, 34</sup>Lys<sup>27</sup>GLP-1(7-36)amide; Thr<sup>8</sup>Asp<sup>28</sup>Arg<sup>26, 34</sup>Lys<sup>27</sup>GLP-1(7-37); Thr<sup>8</sup>Asp<sup>28</sup>Arg<sup>26, 34</sup>Lys<sup>27</sup>GLP-1(7-38); or Thr<sup>8</sup>Asp<sup>26</sup>Arg<sup>26, 34</sup>Lys<sup>27</sup>GLP-1(7-38).

In a further preferred embodiment, the present invention relates to a GLP-1 derivative wherein the parent peptide is: Arg<sup>26</sup>Lys<sup>36</sup>GLP-1(7-36); Arg<sup>34</sup>Lys<sup>36</sup>GLP-1(7-36); Arg<sup>26</sup>Lys<sup>36</sup>GLP-1(7-37); Arg<sup>34</sup>Lys<sup>36</sup>GLP-1(7-37); Arg<sup>26</sup>Lys<sup>37</sup>GLP-1(7-37); Arg<sup>34</sup>Lys<sup>37</sup>GLP-1(7-37); Arg<sup>26</sup>Lys<sup>39</sup>GLP-1(7-39); Arg<sup>34</sup>Lys<sup>39</sup>GLP-1(7-39); Arg<sup>26, 34</sup>Lys<sup>36,39</sup>GLP-1(7-39); Arg<sup>26</sup>Lys<sup>18</sup>GLP-1(7-36); Arg<sup>34</sup>Lys<sup>18</sup>GLP-1(7-36); Arg<sup>26</sup>Lys<sup>18</sup>GLP-1(7-37); Arg<sup>34</sup>Lys<sup>18</sup>GLP-1(7-37); Arg<sup>26</sup>Lys<sup>18</sup>GLP-1(7-38); Arg<sup>34</sup>Lys<sup>18</sup>GLP-1(7-38); Arg<sup>26</sup>Lys<sup>18</sup>GLP-1(7-39); Arg<sup>34</sup>Lys<sup>18</sup>GLP-1(7-39); Arg<sup>26</sup>Lys<sup>23</sup>GLP-1(7-36); Arg<sup>34</sup>Lys<sup>23</sup>GLP-1(7-36); Arg<sup>26</sup>Lys<sup>23</sup>GLP-1(7-37); Arg<sup>34</sup>Lys<sup>23</sup>GLP-1(7-37); Arg<sup>26</sup>Lys<sup>23</sup>GLP-1(7-38); Arg<sup>34</sup>Lys<sup>23</sup>GLP-1(7-38); Arg<sup>26</sup>Lys<sup>23</sup>GLP-1(7-39); Arg<sup>34</sup>Lys<sup>23</sup>GLP-1(7-39); Arg<sup>26</sup>Lys<sup>27</sup>GLP-1(7-36); Arg<sup>34</sup>Lys<sup>27</sup>GLP-1(7-36); Arg<sup>26</sup>Lys<sup>27</sup>GLP-1(7-37); Arg<sup>34</sup>Lys<sup>27</sup>GLP-1(7-37); Arg<sup>26</sup>Lys<sup>27</sup>GLP-1(7-38); Arg<sup>34</sup>Lys<sup>27</sup>GLP-1(7-38); Arg<sup>26</sup>Lys<sup>27</sup>GLP-1(7-39); Arg<sup>34</sup>Lys<sup>27</sup>GLP-1(7-39); Arg<sup>26, 34</sup>Lys<sup>18,36</sup>GLP-1(7-36); Arg<sup>26, 34</sup>Lys<sup>18</sup>GLP-1(7-37); Arg<sup>26, 34</sup>Lys<sup>18,37</sup>GLP-1(7-37); Arg<sup>26, 34</sup>Lys<sup>18,38</sup>GLP-1(7-38); Arg<sup>26, 34</sup>Lys<sup>18,39</sup>GLP-1(7-39); Arg<sup>26, 34</sup>Lys<sup>23,36</sup>GLP-1(7-36); Arg<sup>26, 34</sup>Lys<sup>23,37</sup>GLP-1(7-37); Arg<sup>26, 34</sup>Lys<sup>23,38</sup>GLP-1(7-38); Arg<sup>26, 34</sup>Lys<sup>23,39</sup>GLP-1(7-39); Arg<sup>26, 34</sup>Lys<sup>23,36</sup>GLP-1(7-39); Arg<sup>26, 34</sup>Lys<sup>23,37</sup>GLP-1(7-39); Arg<sup>26, 34</sup>Lys<sup>23,38</sup>GLP-1(7-39); Arg<sup>26, 34</sup>Lys<sup>23,39</sup>GLP-1(7-39); Arg<sup>26, 34</sup>Lys<sup>27,36</sup>GLP-1(7-36); Arg<sup>26, 34</sup>Lys<sup>27,37</sup>GLP-1(7-37); Arg<sup>26, 34</sup>Lys<sup>27,38</sup>GLP-1(7-38); Arg<sup>26, 34</sup>Lys<sup>27,39</sup>GLP-1(7-39); Gly<sup>8</sup>GLP-1(7-36); Gly<sup>8</sup>GLP-1(7-37); Gly<sup>8</sup>GLP-1(7-38); Gly<sup>8</sup>GLP-1(7-39);

Gly<sup>8</sup>Arg<sup>26</sup>Lys<sup>36</sup>GLP-1(7-36); Gly<sup>8</sup>Arg<sup>34</sup>Lys<sup>36</sup>GLP-1(7-36); Gly<sup>8</sup>Arg<sup>26</sup>Lys<sup>36</sup>GLP-1(7-37); Gly<sup>8</sup>Arg<sup>34</sup>Lys<sup>36</sup>GLP-1(7-37); Gly<sup>8</sup>Arg<sup>26</sup>Lys<sup>37</sup>GLP-1(7-37); Gly<sup>8</sup>Arg<sup>34</sup>Lys<sup>37</sup>GLP-1(7-37); Gly<sup>8</sup>Arg<sup>26</sup>Lys<sup>39</sup>GLP-1(7-39); Gly<sup>8</sup>Arg<sup>34</sup>Lys<sup>39</sup>GLP-1(7-39); Gly<sup>8</sup>Arg<sup>26, 34</sup>Lys<sup>36,39</sup>GLP-1(7-39); Gly<sup>8</sup>Arg<sup>26</sup>Lys<sup>18</sup>GLP-1(7-36); Gly<sup>8</sup>Arg<sup>34</sup>Lys<sup>18</sup>GLP-1(7-36); Gly<sup>8</sup>Arg<sup>26</sup>Lys<sup>18</sup>GLP-1(7-37); Gly<sup>8</sup>Arg<sup>34</sup>Lys<sup>18</sup>GLP-1(7-37); Gly<sup>8</sup>Arg<sup>26</sup>Lys<sup>18</sup>GLP-1(7-38); Gly<sup>8</sup>Arg<sup>34</sup>Lys<sup>18</sup>GLP-1(7-38); Gly<sup>8</sup>Arg<sup>26</sup>Lys<sup>18</sup>GLP-1(7-39); Gly<sup>8</sup>Arg<sup>34</sup>Lys<sup>18</sup>GLP-1(7-39); Gly<sup>8</sup>Arg<sup>26</sup>Lys<sup>23</sup>GLP-1(7-36); Gly<sup>8</sup>Arg<sup>34</sup>Lys<sup>23</sup>GLP-1(7-36); Gly<sup>8</sup>Arg<sup>26</sup>Lys<sup>23</sup>GLP-1(7-37); Gly<sup>8</sup>Arg<sup>34</sup>Lys<sup>23</sup>GLP-1(7-37); Gly<sup>8</sup>Arg<sup>26</sup>Lys<sup>23</sup>GLP-1(7-38); Gly<sup>8</sup>Arg<sup>34</sup>Lys<sup>23</sup>GLP-1(7-38); Gly<sup>8</sup>Arg<sup>26</sup>Lys<sup>23</sup>GLP-1(7-39); Gly<sup>8</sup>Arg<sup>34</sup>Lys<sup>23</sup>GLP-1(7-39); Gly<sup>8</sup>Arg<sup>26</sup>Lys<sup>27</sup>GLP-1(7-36); Gly<sup>8</sup>Arg<sup>34</sup>Lys<sup>27</sup>GLP-1(7-36); Gly<sup>8</sup>Arg<sup>26</sup>Lys<sup>27</sup>GLP-1(7-37); Gly<sup>8</sup>Arg<sup>34</sup>Lys<sup>27</sup>GLP-1(7-37); Gly<sup>8</sup>Arg<sup>26</sup>Lys<sup>27</sup>GLP-1(7-38); Gly<sup>8</sup>Arg<sup>34</sup>Lys<sup>27</sup>GLP-1(7-38); Gly<sup>8</sup>Arg<sup>26</sup>Lys<sup>27</sup>GLP-1(7-39); Gly<sup>8</sup>Arg<sup>34</sup>Lys<sup>27</sup>GLP-1(7-39); Gly<sup>8</sup>Arg<sup>26, 34</sup>Lys<sup>18,36</sup>GLP-1(7-36); Gly<sup>8</sup>Arg<sup>26, 34</sup>Lys<sup>18,37</sup>GLP-1(7-37); Gly<sup>8</sup>Arg<sup>26, 34</sup>Lys<sup>18,38</sup>GLP-1(7-38); Gly<sup>8</sup>Arg<sup>26, 34</sup>Lys<sup>18,39</sup>GLP-1(7-39); Gly<sup>8</sup>Arg<sup>26, 34</sup>Lys<sup>23,36</sup>GLP-1(7-36); Gly<sup>8</sup>Arg<sup>26, 34</sup>Lys<sup>23,37</sup>GLP-1(7-37); Gly<sup>8</sup>Arg<sup>26, 34</sup>Lys<sup>23,38</sup>GLP-1(7-38); Gly<sup>8</sup>Arg<sup>26, 34</sup>Lys<sup>23,39</sup>GLP-1(7-39); Gly<sup>8</sup>Arg<sup>26, 34</sup>Lys<sup>27,36</sup>GLP-1(7-36); Gly<sup>8</sup>Arg<sup>26, 34</sup>Lys<sup>27,37</sup>GLP-1(7-37); Gly<sup>8</sup>Arg<sup>26, 34</sup>Lys<sup>27,38</sup>GLP-1(7-38); Gly<sup>8</sup>Arg<sup>26, 34</sup>Lys<sup>27,39</sup>GLP-1(7-39); Val<sup>8</sup>GLP-1(7-36); Val<sup>8</sup>GLP-1(7-37); Val<sup>8</sup>GLP-1(7-38); Val<sup>8</sup>GLP-1(7-39); Val<sup>8</sup>Arg<sup>26</sup>Lys<sup>36</sup>GLP-1(7-36); Val<sup>8</sup>Arg<sup>34</sup>Lys<sup>36</sup>GLP-1(7-36); Val<sup>8</sup>Arg<sup>26</sup>Lys<sup>36</sup>GLP-1(7-37); Val<sup>8</sup>Arg<sup>34</sup>Lys<sup>36</sup>GLP-1(7-37); Val<sup>8</sup>Arg<sup>26</sup>Lys<sup>37</sup>GLP-1(7-37); Val<sup>8</sup>Arg<sup>34</sup>Lys<sup>37</sup>GLP-1(7-37); Val<sup>8</sup>Arg<sup>26</sup>Lys<sup>39</sup>GLP-1(7-39); Val<sup>8</sup>Arg<sup>34</sup>Lys<sup>39</sup>GLP-1(7-39); Val<sup>8</sup>Arg<sup>26, 34</sup>Lys<sup>36,39</sup>GLP-1(7-39); Val<sup>8</sup>Arg<sup>26</sup>Lys<sup>18</sup>GLP-1(7-36); Val<sup>8</sup>Arg<sup>34</sup>Lys<sup>18</sup>GLP-1(7-36); Val<sup>8</sup>Arg<sup>26</sup>Lys<sup>18</sup>GLP-1(7-37); Val<sup>8</sup>Arg<sup>34</sup>Lys<sup>18</sup>GLP-1(7-37); Val<sup>8</sup>Arg<sup>26</sup>Lys<sup>18</sup>GLP-1(7-38); Val<sup>8</sup>Arg<sup>34</sup>Lys<sup>18</sup>GLP-1(7-38); Val<sup>8</sup>Arg<sup>26</sup>Lys<sup>18</sup>GLP-1(7-39); Val<sup>8</sup>Arg<sup>34</sup>Lys<sup>18</sup>GLP-1(7-39); Val<sup>8</sup>Arg<sup>26</sup>Lys<sup>23</sup>GLP-1(7-36); Val<sup>8</sup>Arg<sup>34</sup>Lys<sup>23</sup>GLP-1(7-36); Val<sup>8</sup>Arg<sup>26</sup>Lys<sup>23</sup>GLP-1(7-37); Val<sup>8</sup>Arg<sup>34</sup>Lys<sup>23</sup>GLP-1(7-37); Val<sup>8</sup>Arg<sup>26</sup>Lys<sup>23</sup>GLP-1(7-38); Val<sup>8</sup>Arg<sup>34</sup>Lys<sup>23</sup>GLP-1(7-38); Val<sup>8</sup>Arg<sup>26</sup>Lys<sup>23</sup>GLP-1(7-39); Val<sup>8</sup>Arg<sup>34</sup>Lys<sup>23</sup>GLP-1(7-39); Val<sup>8</sup>Arg<sup>26</sup>Lys<sup>27</sup>GLP-1(7-36); Val<sup>8</sup>Arg<sup>34</sup>Lys<sup>27</sup>GLP-1(7-36); Val<sup>8</sup>Arg<sup>26</sup>Lys<sup>27</sup>GLP-1(7-37); Val<sup>8</sup>Arg<sup>34</sup>Lys<sup>27</sup>GLP-1(7-37); Val<sup>8</sup>Arg<sup>26</sup>Lys<sup>27</sup>GLP-1(7-38); Val<sup>8</sup>Arg<sup>34</sup>Lys<sup>27</sup>GLP-1(7-38); Val<sup>8</sup>Arg<sup>26</sup>Lys<sup>27</sup>GLP-1(7-39); Val<sup>8</sup>Arg<sup>34</sup>Lys<sup>27</sup>GLP-1(7-39); Val<sup>8</sup>Arg<sup>26, 34</sup>Lys<sup>18,36</sup>GLP-1(7-36); Val<sup>8</sup>Arg<sup>26, 34</sup>Lys<sup>18</sup>GLP-1(7-37); Val<sup>8</sup>Arg<sup>26, 34</sup>Lys<sup>18,37</sup>GLP-1(7-37); Val<sup>8</sup>Arg<sup>26, 34</sup>Lys<sup>18,38</sup>GLP-1(7-38); Val<sup>8</sup>Arg<sup>26, 34</sup>Lys<sup>18,39</sup>GLP-1(7-39); Val<sup>8</sup>Arg<sup>26, 34</sup>Lys<sup>23,36</sup>GLP-1(7-36); Val<sup>8</sup>Arg<sup>26, 34</sup>Lys<sup>23,37</sup>GLP-1(7-37); Val<sup>8</sup>Arg<sup>26, 34</sup>Lys<sup>23,38</sup>GLP-1(7-38); Val<sup>8</sup>Arg<sup>26, 34</sup>Lys<sup>23,39</sup>GLP-1(7-39); Val<sup>8</sup>Arg<sup>26, 34</sup>Lys<sup>27,36</sup>GLP-1(7-36); Val<sup>8</sup>Arg<sup>26, 34</sup>Lys<sup>27,37</sup>GLP-1(7-37); Val<sup>8</sup>Arg<sup>26, 34</sup>Lys<sup>27,38</sup>GLP-1(7-38); or Val<sup>8</sup>Arg<sup>26, 34</sup>Lys<sup>27,39</sup>GLP-1(7-39).

In a further preferred embodiment, the parent peptide is: Arg<sup>26</sup>GLP-1(7-37); Arg<sup>34</sup>GLP-1(7-37); Lys<sup>36</sup>GLP-1(7-37); Arg<sup>26, 34</sup>Lys<sup>36</sup>GLP-1(7-37); Arg<sup>26, 34</sup>Lys<sup>38</sup>GLP-1(7-38); Arg<sup>26, 34</sup>Lys<sup>39</sup>GLP-1(7-39); Arg<sup>26, 34</sup>Lys<sup>40</sup>GLP-1(7-40); Arg<sup>26</sup>Lys<sup>36</sup>GLP-1(7-37); Arg<sup>34</sup>Lys<sup>36</sup>GLP-1(7-37); Arg<sup>26</sup>Lys<sup>39</sup>GLP-1(7-39); Arg<sup>34</sup>Lys<sup>40</sup>GLP-1(7-40); Arg<sup>26, 34</sup>Lys<sup>36,39</sup>GLP-1(7-39); Arg<sup>26, 34</sup>Lys<sup>36,40</sup>GLP-1(7-40); Gly<sup>8</sup>Arg<sup>26</sup>GLP-1(7-37); Gly<sup>8</sup>Arg<sup>34</sup>GLP-1(7-37); Gly<sup>8</sup>Lys<sup>36</sup>GLP-1(7-37); Gly<sup>8</sup>Arg<sup>26, 34</sup>Lys<sup>36</sup>GLP-1(7-37);

Gly<sup>8</sup>Arg<sup>26, 34</sup>Lys<sup>39</sup>GLP-1(7-39); Gly<sup>8</sup>Arg<sup>26, 34</sup>Lys<sup>40</sup>GLP-1(7-40); Gly<sup>8</sup>Arg<sup>26</sup>Lys<sup>36</sup>GLP-1(7-37); Gly<sup>8</sup>Arg<sup>34</sup>Lys<sup>36</sup>GLP-1(7-37); Gly<sup>8</sup>Arg<sup>26</sup>Lys<sup>39</sup>GLP-1(7-39); Gly<sup>8</sup>Arg<sup>34</sup>Lys<sup>40</sup>GLP-1(7-40); Gly<sup>8</sup>Arg<sup>26, 34</sup>Lys<sup>36,39</sup>GLP-1(7-39); or Gly<sup>8</sup>Arg<sup>26, 34</sup>Lys<sup>36,40</sup>GLP-1(7-40).

In a further preferred embodiment, the parent peptide is: Arg<sup>26, 34</sup>Lys<sup>38</sup>GLP-1(7-38); Arg<sup>26, 34</sup>Lys<sup>39</sup>GLP-1(7-39); Arg<sup>26, 34</sup>Lys<sup>40</sup>GLP-1(7-40); Arg<sup>26, 34</sup>Lys<sup>41</sup>GLP-1(7-41); Arg<sup>26, 34</sup>Lys<sup>42</sup>GLP-1(7-42); Arg<sup>26, 34</sup>Lys<sup>43</sup>GLP-1(7-43); Arg<sup>26, 34</sup>Lys<sup>44</sup>GLP-1(7-44); Arg<sup>26, 34</sup>Lys<sup>45</sup>GLP-1(7-45); Arg<sup>26</sup>Lys<sup>38</sup>GLP-1(7-38); Arg<sup>34</sup>Lys<sup>38</sup>GLP-1(7-38); Arg<sup>26, 34</sup>Lys<sup>36,38</sup>GLP-1(7-38); Arg<sup>26, 34</sup>Lys<sup>38</sup>GLP-1(7-38); Arg<sup>26</sup>Lys<sup>39</sup>GLP-1(7-39); Arg<sup>34</sup>Lys<sup>39</sup>GLP-1(7-39); or Arg<sup>26, 34</sup>Lys<sup>36,39</sup>GLP-1(7-39).

In a further preferred embodiment, the parent peptide is Arg<sup>26</sup>GLP-1(7-37), Arg<sup>34</sup>GLP-1(7-37), Lys<sup>36</sup>GLP-1(7-37), Arg<sup>26, 34</sup>Lys<sup>36</sup>GLP-1(7-37), Arg<sup>26</sup>Lys<sup>36</sup>GLP-1(7-37), Arg<sup>34</sup>Lys<sup>36</sup>GLP-1(7-37), Gly<sup>8</sup>Arg<sup>26</sup>GLP-1(7-37), Gly<sup>8</sup>Arg<sup>34</sup>GLP-1(7-37), Gly<sup>8</sup>Lys<sup>36</sup>GLP-1(7-37), Gly<sup>8</sup>Arg<sup>26, 34</sup>Lys<sup>36</sup>GLP-1(7-37), Gly<sup>8</sup>Arg<sup>26, 34</sup>Lys<sup>36</sup>GLP-1(7-37) or Gly<sup>8</sup>Arg<sup>34</sup>Lys<sup>36</sup>GLP-1(7-37).

In a further preferred embodiment, the parent peptide is Arg<sup>26</sup>Lys<sup>38</sup>GLP-1(7-38), Arg<sup>26, 34</sup>Lys<sup>38</sup>GLP-1(7-38), Arg<sup>26, 34</sup>Lys<sup>36,38</sup>GLP-1(7-38), Gly<sup>8</sup>Arg<sup>26</sup>Lys<sup>38</sup>GLP-1(7-38) or Gly<sup>8</sup>Arg<sup>26, 34</sup>Lys<sup>36,38</sup>GLP-1(7-38).

In a further preferred embodiment, the parent peptide is Arg<sup>26</sup>Lys<sup>39</sup>GLP-1(7-39), Arg<sup>26, 34</sup>Lys<sup>36,39</sup>GLP-1(7-39), Gly<sup>8</sup>Arg<sup>26</sup>Lys<sup>39</sup>GLP-1(7-39) or Gly<sup>8</sup>Arg<sup>26, 34</sup>Lys<sup>36,39</sup>GLP-1(7-39).

In a further preferred embodiment, the parent peptide is Arg<sup>34</sup>Lys<sup>40</sup>GLP-1(7-40), Arg<sup>26, 34</sup>Lys<sup>36,40</sup>GLP-1(7-40), Gly<sup>8</sup>Arg<sup>34</sup>Lys<sup>40</sup>GLP-1(7-40) or Gly<sup>8</sup>Arg<sup>26, 34</sup>Lys<sup>36,40</sup>GLP-1(7-40).

In a further preferred embodiment, the parent peptide is: Arg<sup>26</sup>GLP-1(7-36); Arg<sup>34</sup>GLP-1(7-36); Arg<sup>26, 34</sup>Lys<sup>36</sup>GLP-1(7-36); Arg<sup>26</sup>GLP-1(7-36)amide; Arg<sup>34</sup>GLP-1(7-36)amide; Arg<sup>26, 34</sup>Lys<sup>36</sup>GLP-1(7-36)amide; Arg<sup>26</sup>GLP-1(7-37); Arg<sup>34</sup>GLP-1(7-37); Arg<sup>26, 34</sup>Lys<sup>36</sup>GLP-1(7-37); Arg<sup>26</sup>GLP-1(7-38); Arg<sup>34</sup>GLP-1(7-38); Arg<sup>26, 34</sup>Lys<sup>38</sup>GLP-1(7-38); Arg<sup>26</sup>GLP-1(7-39); Arg<sup>34</sup>GLP-1(7-39); Arg<sup>26, 34</sup>Lys<sup>39</sup>GLP-1(7-39); Gly<sup>8</sup>Arg<sup>26</sup>GLP-1(7-36); Gly<sup>8</sup>Arg<sup>34</sup>GLP-1(7-36); Gly<sup>8</sup>Arg<sup>26</sup>GLP-1(7-36)amide; Gly<sup>8</sup>Arg<sup>34</sup>GLP-1(7-36)amide; Gly<sup>8</sup>Arg<sup>26</sup>GLP-1(7-37); Gly<sup>8</sup>Arg<sup>34</sup>GLP-1(7-37); Gly<sup>8</sup>Arg<sup>26, 34</sup>Lys<sup>36</sup>GLP-1(7-37); Gly<sup>8</sup>Arg<sup>26, 34</sup>Lys<sup>36</sup>GLP-1(7-38); Gly<sup>8</sup>Arg<sup>26, 34</sup>Lys<sup>36</sup>GLP-1(7-38); Gly<sup>8</sup>Arg<sup>26</sup>GLP-1(7-39); Gly<sup>8</sup>Arg<sup>34</sup>GLP-1(7-39); Gly<sup>8</sup>Arg<sup>26, 34</sup>Lys<sup>39</sup>GLP-1(7-39); Val<sup>8</sup>Arg<sup>26</sup>GLP-1(7-36); Val<sup>8</sup>Arg<sup>34</sup>GLP-1(7-36); Val<sup>8</sup>Arg<sup>26, 34</sup>Lys<sup>36</sup>GLP-1(7-36)amide; Val<sup>8</sup>Arg<sup>26, 34</sup>Lys<sup>36</sup>GLP-1(7-36)amide; Val<sup>8</sup>Arg<sup>26</sup>GLP-1(7-37); Val<sup>8</sup>Arg<sup>34</sup>GLP-1(7-37); Val<sup>8</sup>Arg<sup>26, 34</sup>Lys<sup>36</sup>GLP-1(7-37); Val<sup>8</sup>Arg<sup>26</sup>GLP-1(7-38); Val<sup>8</sup>Arg<sup>34</sup>GLP-1(7-38); Val<sup>8</sup>Arg<sup>26, 34</sup>Lys<sup>36</sup>GLP-1(7-38); Val<sup>8</sup>Arg<sup>26</sup>GLP-1(7-39); Val<sup>8</sup>Arg<sup>34</sup>GLP-1(7-39); Val<sup>8</sup>Arg<sup>26, 34</sup>Lys<sup>39</sup>GLP-1(7-39); Ser<sup>8</sup>Arg<sup>26</sup>GLP-1(7-36); Ser<sup>8</sup>Arg<sup>34</sup>GLP-1(7-36); Ser<sup>8</sup>Arg<sup>26, 34</sup>Lys<sup>36</sup>GLP-1(7-36); Ser<sup>8</sup>Arg<sup>26</sup>GLP-1(7-36)amide; Ser<sup>8</sup>Arg<sup>34</sup>GLP-1(7-36)amide; Ser<sup>8</sup>Arg<sup>26, 34</sup>Lys<sup>36</sup>GLP-1(7-36)amide; Ser<sup>8</sup>Arg<sup>26</sup>GLP-1(7-37); Ser<sup>8</sup>Arg<sup>34</sup>GLP-1(7-37); Ser<sup>8</sup>Arg<sup>26, 34</sup>Lys<sup>36</sup>GLP-1(7-37); Ser<sup>8</sup>Arg<sup>26</sup>GLP-1(7-38); Ser<sup>8</sup>Arg<sup>34</sup>GLP-1(7-38); Ser<sup>8</sup>Arg<sup>26, 34</sup>Lys<sup>38</sup>GLP-1(7-38); Ser<sup>8</sup>Arg<sup>26</sup>GLP-1(7-39); Ser<sup>8</sup>Arg<sup>34</sup>GLP-1(7-39); Ser<sup>8</sup>Arg<sup>26, 34</sup>Lys<sup>39</sup>GLP-1(7-39); Thr<sup>8</sup>Arg<sup>26</sup>GLP-1(7-36); Thr<sup>8</sup>Arg<sup>34</sup>GLP-1(7-36); Thr<sup>8</sup>Arg<sup>26, 34</sup>Lys<sup>36</sup>GLP-1(7-36); Thr<sup>8</sup>Arg<sup>26</sup>GLP-1(7-36)amide;

Thr<sup>8</sup>Arg<sup>34</sup>GLP-1(7-36)amide; Thr<sup>8</sup>Arg<sup>26, 34</sup>Lys<sup>36</sup>GLP-1(7-36)amide; Thr<sup>8</sup>Arg<sup>26</sup>GLP-1(7-37); Thr<sup>8</sup>Arg<sup>34</sup>GLP-1(7-37); Thr<sup>8</sup>Arg<sup>26, 34</sup>Lys<sup>36</sup>GLP-1(7-38); Thr<sup>8</sup>Arg<sup>26, 34</sup>Lys<sup>39</sup>GLP-1(7-38); Thr<sup>8</sup>Arg<sup>26</sup>GLP-1(7-38); Thr<sup>8</sup>Arg<sup>34</sup>GLP-1(7-38); Thr<sup>8</sup>Arg<sup>26, 34</sup>Lys<sup>38</sup>GLP-1(7-38); Thr<sup>8</sup>Arg<sup>26</sup>GLP-1(7-39); Thr<sup>8</sup>Arg<sup>34</sup>GLP-1(7-39); Thr<sup>8</sup>Arg<sup>26, 34</sup>Lys<sup>39</sup>GLP-1(7-39); Val<sup>8</sup>Glu<sup>35</sup>Arg<sup>26, 34</sup>Lys<sup>36</sup>GLP-1(7-36); Val<sup>8</sup>Glu<sup>35</sup>Arg<sup>26, 34</sup>Lys<sup>36</sup>GLP-1(7-36)amide; Val<sup>8</sup>Glu<sup>36</sup>Arg<sup>26, 34</sup>Lys<sup>36</sup>GLP-1(7-37); Val<sup>8</sup>Glu<sup>37</sup>Arg<sup>26, 34</sup>Lys<sup>36</sup>GLP-1(7-37); Val<sup>8</sup>Glu<sup>37</sup>Arg<sup>26, 34</sup>Lys<sup>38</sup>GLP-1(7-38); Val<sup>8</sup>Glu<sup>38</sup>Arg<sup>26, 34</sup>Lys<sup>36</sup>GLP-1(7-36); Val<sup>8</sup>Glu<sup>35</sup>Arg<sup>26, 34</sup>Lys<sup>36</sup>GLP-1(7-36)amide; Val<sup>8</sup>Glu<sup>36</sup>Arg<sup>26, 34</sup>Lys<sup>37</sup>GLP-1(7-37); Val<sup>8</sup>Glu<sup>37</sup>Arg<sup>26, 34</sup>Lys<sup>38</sup>GLP-1(7-38); Val<sup>8</sup>Glu<sup>38</sup>Arg<sup>26, 34</sup>Lys<sup>39</sup>GLP-1(7-39); Val<sup>8</sup>Asp<sup>35</sup>Arg<sup>26, 34</sup>Lys<sup>36</sup>GLP-1(7-36); Val<sup>8</sup>Asp<sup>35</sup>Arg<sup>26, 34</sup>Lys<sup>36</sup>GLP-1(7-36)amide; Val<sup>8</sup>Asp<sup>36</sup>Arg<sup>26, 34</sup>Lys<sup>36</sup>GLP-1(7-37); Val<sup>8</sup>Asp<sup>37</sup>Arg<sup>26, 34</sup>Lys<sup>36</sup>GLP-1(7-37); Val<sup>8</sup>Asp<sup>38</sup>Arg<sup>26, 34</sup>Lys<sup>36</sup>GLP-1(7-36); Val<sup>8</sup>Asp<sup>35</sup>Arg<sup>26, 34</sup>Lys<sup>36</sup>GLP-1(7-36)amide; Val<sup>8</sup>Asp<sup>36</sup>Arg<sup>26, 34</sup>Lys<sup>36</sup>GLP-1(7-36)amide; Val<sup>8</sup>Asp<sup>37</sup>Arg<sup>26, 34</sup>Lys<sup>36</sup>GLP-1(7-37); Val<sup>8</sup>Asp<sup>38</sup>Arg<sup>26, 34</sup>Lys<sup>36</sup>GLP-1(7-36); Ser<sup>8</sup>Glu<sup>35</sup>Arg<sup>26, 34</sup>Lys<sup>36</sup>GLP-1(7-36); Ser<sup>8</sup>Glu<sup>35</sup>Arg<sup>26, 34</sup>Lys<sup>36</sup>GLP-1(7-36)amide; Ser<sup>8</sup>Glu<sup>36</sup>Arg<sup>26, 34</sup>Lys<sup>37</sup>GLP-1(7-37); Ser<sup>8</sup>Glu<sup>37</sup>Arg<sup>26, 34</sup>Lys<sup>38</sup>GLP-1(7-38); Ser<sup>8</sup>Glu<sup>38</sup>Arg<sup>26, 34</sup>Lys<sup>39</sup>GLP-1(7-39); Ser<sup>8</sup>Glu<sup>35</sup>Arg<sup>26, 34</sup>Lys<sup>36</sup>GLP-1(7-36); Ser<sup>8</sup>Glu<sup>35</sup>Arg<sup>26, 34</sup>Lys<sup>36</sup>GLP-1(7-36)amide; Ser<sup>8</sup>Glu<sup>36</sup>Arg<sup>26, 34</sup>Lys<sup>36</sup>GLP-1(7-37); Ser<sup>8</sup>Glu<sup>37</sup>Arg<sup>26, 34</sup>Lys<sup>38</sup>GLP-1(7-38); Ser<sup>8</sup>Glu<sup>38</sup>Arg<sup>26, 34</sup>Lys<sup>39</sup>GLP-1(7-39); Ser<sup>8</sup>Asp<sup>35</sup>Arg<sup>26, 34</sup>Lys<sup>36</sup>GLP-1(7-36); Ser<sup>8</sup>Asp<sup>35</sup>Arg<sup>26, 34</sup>Lys<sup>36</sup>GLP-1(7-36)amide; Ser<sup>8</sup>Asp<sup>36</sup>Arg<sup>26, 34</sup>Lys<sup>36</sup>GLP-1(7-37); Ser<sup>8</sup>Asp<sup>37</sup>Arg<sup>26, 34</sup>Lys<sup>36</sup>GLP-1(7-37); Ser<sup>8</sup>Asp<sup>38</sup>Arg<sup>26, 34</sup>Lys<sup>36</sup>GLP-1(7-36); Ser<sup>8</sup>Asp<sup>35</sup>Arg<sup>26, 34</sup>Lys<sup>36</sup>GLP-1(7-36)amide; Ser<sup>8</sup>Asp<sup>36</sup>Arg<sup>26, 34</sup>Lys<sup>36</sup>GLP-1(7-36)amide; Ser<sup>8</sup>Asp<sup>37</sup>Arg<sup>26, 34</sup>Lys<sup>36</sup>GLP-1(7-37); Ser<sup>8</sup>Asp<sup>38</sup>Arg<sup>26, 34</sup>Lys<sup>36</sup>GLP-1(7-39); Thr<sup>8</sup>Glu<sup>35</sup>Arg<sup>26, 34</sup>Lys<sup>36</sup>GLP-1(7-36); Thr<sup>8</sup>Glu<sup>35</sup>Arg<sup>26, 34</sup>Lys<sup>36</sup>GLP-1(7-36)amide; Thr<sup>8</sup>Glu<sup>36</sup>Arg<sup>26, 34</sup>Lys<sup>36</sup>GLP-1(7-37); Thr<sup>8</sup>Glu<sup>37</sup>Arg<sup>26, 34</sup>Lys<sup>38</sup>GLP-1(7-38); Thr<sup>8</sup>Glu<sup>38</sup>Arg<sup>26, 34</sup>Lys<sup>39</sup>GLP-1(7-39); Thr<sup>8</sup>Glu<sup>35</sup>Arg<sup>26, 34</sup>Lys<sup>36</sup>GLP-1(7-36)amide; Thr<sup>8</sup>Glu<sup>36</sup>Arg<sup>26, 34</sup>Lys<sup>36</sup>GLP-1(7-37); Thr<sup>8</sup>Glu<sup>37</sup>Arg<sup>26, 34</sup>Lys<sup>38</sup>GLP-1(7-38); Thr<sup>8</sup>Glu<sup>38</sup>Arg<sup>26, 34</sup>Lys<sup>39</sup>GLP-1(7-39); Thr<sup>8</sup>Asp<sup>35</sup>Arg<sup>26, 34</sup>Lys<sup>36</sup>GLP-1(7-36); Thr<sup>8</sup>Asp<sup>35</sup>Arg<sup>26, 34</sup>Lys<sup>36</sup>GLP-1(7-36)amide; Thr<sup>8</sup>Asp<sup>36</sup>Arg<sup>26, 34</sup>Lys<sup>36</sup>GLP-1(7-36)amide; Thr<sup>8</sup>Asp<sup>37</sup>Arg<sup>26, 34</sup>Lys<sup>36</sup>GLP-1(7-37); Thr<sup>8</sup>Asp<sup>38</sup>Arg<sup>26, 34</sup>Lys<sup>36</sup>GLP-1(7-39); Thr<sup>8</sup>Asp<sup>35</sup>Arg<sup>26, 34</sup>Lys<sup>36</sup>GLP-1(7-36); Thr<sup>8</sup>Asp<sup>35</sup>Arg<sup>26, 34</sup>Lys<sup>36</sup>GLP-1(7-36)amide; Thr<sup>8</sup>Asp<sup>36</sup>Arg<sup>26, 34</sup>Lys<sup>36</sup>GLP-1(7-36)amide; Thr<sup>8</sup>Asp<sup>37</sup>Arg<sup>26, 34</sup>Lys<sup>36</sup>GLP-1(7-37); Thr<sup>8</sup>Asp<sup>38</sup>Arg<sup>26, 34</sup>Lys<sup>36</sup>GLP-1(7-39); Gly<sup>8</sup>Glu<sup>35</sup>Arg<sup>26, 34</sup>Lys<sup>36</sup>GLP-1(7-36); Gly<sup>8</sup>Glu<sup>35</sup>Arg<sup>26, 34</sup>Lys<sup>36</sup>GLP-1(7-36)amide; Gly<sup>8</sup>Glu<sup>36</sup>Arg<sup>26, 34</sup>Lys<sup>36</sup>GLP-1(7-37); Gly<sup>8</sup>Glu<sup>37</sup>Arg<sup>26, 34</sup>Lys<sup>38</sup>GLP-1(7-38); Gly<sup>8</sup>Glu<sup>38</sup>Arg<sup>26, 34</sup>Lys<sup>39</sup>GLP-1(7-39); Gly<sup>8</sup>Glu<sup>35</sup>Arg<sup>26, 34</sup>Lys<sup>36</sup>GLP-1(7-36); Gly<sup>8</sup>Glu<sup>35</sup>Arg<sup>26, 34</sup>Lys<sup>36</sup>GLP-1(7-36)amide; Gly<sup>8</sup>Glu<sup>36</sup>Arg<sup>26, 34</sup>Lys<sup>36</sup>GLP-1(7-36)amide; Gly<sup>8</sup>Glu<sup>37</sup>Arg<sup>26, 34</sup>Lys<sup>38</sup>GLP-1(7-38); Gly<sup>8</sup>Glu<sup>38</sup>Arg<sup>26, 34</sup>Lys<sup>39</sup>GLP-1(7-39); Gly<sup>8</sup>Asp<sup>35</sup>Arg<sup>26, 34</sup>Lys<sup>36</sup>GLP-1(7-36); Gly<sup>8</sup>Asp<sup>35</sup>Arg<sup>26, 34</sup>Lys<sup>36</sup>GLP-1(7-36)amide; Gly<sup>8</sup>Asp<sup>36</sup>Arg<sup>26, 34</sup>Lys<sup>36</sup>GLP-1(7-36)amide; Gly<sup>8</sup>Asp<sup>37</sup>Arg<sup>26, 34</sup>Lys<sup>36</sup>GLP-1(7-37); Gly<sup>8</sup>Asp<sup>38</sup>Arg<sup>26, 34</sup>Lys<sup>36</sup>GLP-1(7-39); Gly<sup>8</sup>Asp<sup>35</sup>Arg<sup>26, 34</sup>Lys<sup>36</sup>GLP-1(7-36); Gly<sup>8</sup>Asp<sup>35</sup>Arg<sup>26, 34</sup>Lys<sup>36</sup>GLP-1(7-36)amide; Gly<sup>8</sup>Asp<sup>36</sup>Arg<sup>26, 34</sup>Lys<sup>36</sup>GLP-1(7-36)amide; Gly<sup>8</sup>Asp<sup>37</sup>Arg<sup>26, 34</sup>Lys<sup>36</sup>GLP-1(7-37); Gly<sup>8</sup>Asp<sup>38</sup>Arg<sup>26, 34</sup>Lys<sup>36</sup>GLP-1(7-39); Arg<sup>26, 34</sup>Lys<sup>18</sup>GLP-1(7-36); Arg<sup>26, 34</sup>Lys<sup>18</sup>GLP-1(7-36)amide;





1(7-39); Gly<sup>8</sup>Arg<sup>34</sup>Lys<sup>27</sup>GLP-1(7-39); Gly<sup>8</sup>Arg<sup>26, 34</sup>Lys<sup>18, 36</sup>GLP-1(7-36); Gly<sup>8</sup>Arg<sup>26, 34</sup>Lys<sup>18</sup>GLP-1(7-37); Gly<sup>8</sup>Arg<sup>26, 34</sup>Lys<sup>18,37</sup>GLP-1(7-37); Gly<sup>8</sup>Arg<sup>26, 34</sup>Lys<sup>18, 39</sup>GLP-1(7-38); Gly<sup>8</sup>Arg<sup>26, 34</sup>Lys<sup>18,39</sup>GLP-1(7-39); Gly<sup>8</sup>Arg<sup>26, 34</sup>Lys<sup>23,36</sup>GLP-1(7-36); Gly<sup>8</sup>Arg<sup>26, 34</sup>Lys<sup>23</sup>GLP-1(7-37); Gly<sup>8</sup>Arg<sup>26, 34</sup>Lys<sup>23,37</sup>GLP-1(7-37); Gly<sup>8</sup>Arg<sup>26, 34</sup>Lys<sup>23,38</sup>GLP-1(7-38); Gly<sup>8</sup>Arg<sup>26, 34</sup>Lys<sup>23, 39</sup>GLP-1(7-39); Gly<sup>8</sup>Arg<sup>26, 34</sup>Lys<sup>27,36</sup>GLP-1(7-36); Gly<sup>8</sup>Arg<sup>26, 34</sup>Lys<sup>27</sup>GLP-1(7-37); Gly<sup>8</sup>Arg<sup>26, 34</sup>Lys<sup>27,37</sup>GLP-1(7-37); Gly<sup>8</sup>Arg<sup>26, 34</sup>Lys<sup>27,38</sup>GLP-1(7-38); Gly<sup>8</sup>Arg<sup>26, 34</sup>Lys<sup>27,39</sup>GLP-1(7-39); Val<sup>8</sup>GLP-1(7-36); Val<sup>8</sup>GLP-1(7-37); Val<sup>8</sup>GLP-1(7-38); Val<sup>8</sup>GLP-1(7-39); Val<sup>8</sup>Arg<sup>26</sup>Lys<sup>36</sup>GLP-1(7-36); Val<sup>8</sup>Arg<sup>34</sup>Lys<sup>36</sup>GLP-1(7-36); Val<sup>8</sup>Arg<sup>26</sup>Lys<sup>36</sup>GLP-1(7-37); Val<sup>8</sup>Arg<sup>34</sup>Lys<sup>36</sup>GLP-1(7-37); Val<sup>8</sup>Arg<sup>26</sup>Lys<sup>37</sup>GLP-1(7-37); Val<sup>8</sup>Arg<sup>34</sup>Lys<sup>37</sup>GLP-1(7-37); Val<sup>8</sup>Arg<sup>26</sup>Lys<sup>39</sup>GLP-1(7-39); Val<sup>8</sup>Arg<sup>34</sup>Lys<sup>39</sup>GLP-1(7-39); Val<sup>8</sup>Arg<sup>26, 34</sup>Lys<sup>36,39</sup>GLP-1(7-39); Val<sup>8</sup>Arg<sup>26</sup>Lys<sup>18</sup>GLP-1(7-36); Val<sup>8</sup>Arg<sup>34</sup>Lys<sup>18</sup>GLP-1(7-36); Val<sup>8</sup>Arg<sup>26</sup>Lys<sup>18</sup>GLP-1(7-37); Val<sup>8</sup>Arg<sup>34</sup>Lys<sup>18</sup>GLP-1(7-37); Val<sup>8</sup>Arg<sup>26</sup>Lys<sup>18</sup>GLP-1(7-38); Val<sup>8</sup>Arg<sup>34</sup>Lys<sup>18</sup>GLP-1(7-38); Val<sup>8</sup>Arg<sup>26</sup>Lys<sup>18</sup>GLP-1(7-39); Val<sup>8</sup>Arg<sup>34</sup>Lys<sup>18</sup>GLP-1(7-39); Val<sup>8</sup>Arg<sup>26</sup>Lys<sup>23</sup>GLP-1(7-36); Val<sup>8</sup>Arg<sup>34</sup>Lys<sup>23</sup>GLP-1(7-36); Val<sup>8</sup>Arg<sup>26</sup>Lys<sup>23</sup>GLP-1(7-37); Val<sup>8</sup>Arg<sup>34</sup>Lys<sup>23</sup>GLP-1(7-37); Val<sup>8</sup>Arg<sup>26</sup>Lys<sup>23</sup>GLP-1(7-38); Val<sup>8</sup>Arg<sup>34</sup>Lys<sup>23</sup>GLP-1(7-38); Val<sup>8</sup>Arg<sup>26</sup>Lys<sup>23</sup>GLP-1(7-39); Val<sup>8</sup>Arg<sup>34</sup>Lys<sup>23</sup>GLP-1(7-39); Val<sup>8</sup>Arg<sup>26</sup>Lys<sup>27</sup>GLP-1(7-36); Val<sup>8</sup>Arg<sup>34</sup>Lys<sup>27</sup>GLP-1(7-36); Val<sup>8</sup>Arg<sup>26</sup>Lys<sup>27</sup>GLP-1(7-37); Val<sup>8</sup>Arg<sup>34</sup>Lys<sup>27</sup>GLP-1(7-37); Val<sup>8</sup>Arg<sup>26</sup>Lys<sup>27</sup>GLP-1(7-38); Val<sup>8</sup>Arg<sup>34</sup>Lys<sup>27</sup>GLP-1(7-38); Val<sup>8</sup>Arg<sup>26</sup>Lys<sup>27</sup>GLP-1(7-39); Val<sup>8</sup>Arg<sup>34</sup>Lys<sup>27</sup>GLP-1(7-39); Val<sup>8</sup>Arg<sup>26, 34</sup>Lys<sup>18,36</sup>GLP-1(7-36); Val<sup>8</sup>Arg<sup>26, 34</sup>Lys<sup>18</sup>GLP-1(7-37); Val<sup>8</sup>Arg<sup>26, 34</sup>Lys<sup>18,37</sup>GLP-1(7-37); Val<sup>8</sup>Arg<sup>26, 34</sup>Lys<sup>18,38</sup>GLP-1(7-38); Val<sup>8</sup>Arg<sup>26, 34</sup>Lys<sup>18, 39</sup>GLP-1(7-39); Val<sup>8</sup>Arg<sup>26, 34</sup>Lys<sup>23,36</sup>GLP-1(7-36); Val<sup>8</sup>Arg<sup>26, 34</sup>Lys<sup>23,37</sup>GLP-1(7-37); Val<sup>8</sup>Arg<sup>26, 34</sup>Lys<sup>23,38</sup>GLP-1(7-38); Val<sup>8</sup>Arg<sup>26, 34</sup>Lys<sup>23,39</sup>GLP-1(7-39); Val<sup>8</sup>Arg<sup>26, 34</sup>Lys<sup>27,36</sup>GLP-1(7-36); Val<sup>8</sup>Arg<sup>26, 34</sup>Lys<sup>27</sup>GLP-1(7-37); Val<sup>8</sup>Arg<sup>26, 34</sup>Lys<sup>27,37</sup>GLP-1(7-37); Val<sup>8</sup>Arg<sup>26, 34</sup>Lys<sup>27,38</sup>GLP-1(7-38); or Val<sup>8</sup>Arg<sup>26, 34</sup>Lys<sup>27,39</sup>GLP-1(7-39).

In a further preferred embodiment, the present invention relates to a GLP-1 derivative wherein the parent peptide is: Arg<sup>26</sup>GLP-1(8-37); Arg<sup>34</sup>GLP-1(8-37); Lys<sup>36</sup>GLP-1(8-37); Arg<sup>26, 34</sup>Lys<sup>36</sup>GLP-1(8-37); Arg<sup>26, 34</sup>Lys<sup>38</sup>GLP-1(8-38); Arg<sup>26, 34</sup>Lys<sup>39</sup>GLP-1(8-39); Arg<sup>26, 34</sup>Lys<sup>40</sup>GLP-1(8-40); Arg<sup>26</sup>Lys<sup>36</sup>GLP-1(8-37); Arg<sup>34</sup>Lys<sup>36</sup>GLP-1(8-37); Arg<sup>26</sup>Lys<sup>39</sup>GLP-1(8-39); Arg<sup>34</sup>Lys<sup>40</sup>GLP-1(8-40); Arg<sup>26, 34</sup>Lys<sup>36,39</sup>GLP-1(8-39); Arg<sup>26, 34</sup>Lys<sup>36,40</sup>GLP-1(8-40); Gly<sup>8</sup>Arg<sup>26</sup>GLP-1(8-37); Gly<sup>8</sup>Arg<sup>34</sup>GLP-1(8-37); Gly<sup>8</sup>Lys<sup>36</sup>GLP-1(8-37); Gly<sup>8</sup>Arg<sup>26, 34</sup>Lys<sup>36</sup>GLP-1(8-37); Gly<sup>8</sup>Arg<sup>26, 34</sup>Lys<sup>39</sup>GLP-1(8-39); Gly<sup>8</sup>Arg<sup>26, 34</sup>Lys<sup>40</sup>GLP-1(8-40); Gly<sup>8</sup>Arg<sup>26, 34</sup>Lys<sup>36,39</sup>GLP-1(8-39); or Gly<sup>8</sup>Arg<sup>26, 34</sup>Lys<sup>36,40</sup>GLP-1(8-40).

In a further preferred embodiment, the parent peptide is: Arg<sup>26, 34</sup>Lys<sup>38</sup>GLP-1(8-38); Arg<sup>26, 34</sup>Lys<sup>39</sup>GLP-1(8-39); Arg<sup>26, 34</sup>Lys<sup>40</sup>GLP-1(8-40); Arg<sup>26, 34</sup>Lys<sup>41</sup>GLP-1(8-41); Arg<sup>26, 34</sup>Lys<sup>42</sup>GLP-1(8-42); Arg<sup>26, 34</sup>Lys<sup>43</sup>GLP-1(8-43); Arg<sup>26, 34</sup>Lys<sup>44</sup>GLP-1(8-44); Arg<sup>26, 34</sup>Lys<sup>45</sup>GLP-1(8-45); Arg<sup>26</sup>Lys<sup>38</sup>GLP-1(8-38); Arg<sup>34</sup>Lys<sup>38</sup>GLP-1(8-38); Arg<sup>26, 34</sup>Lys<sup>36,38</sup>GLP-1(8-38); Arg<sup>26, 34</sup>Lys<sup>38</sup>GLP-1(8-38); Arg<sup>26</sup>Lys<sup>39</sup>GLP-1(8-39); Arg<sup>34</sup>Lys<sup>39</sup>GLP-1(8-39); or Arg<sup>26, 34</sup>Lys<sup>36,39</sup>GLP-1(8-39).

In a further preferred embodiment, the parent peptide is Arg<sup>26</sup>GLP-1(8-37), Arg<sup>34</sup>GLP-1(8-37) Lys<sup>36</sup>GLP-1(8-37), Arg<sup>26, 34</sup>Lys<sup>36</sup>GLP-1(8-37), Arg<sup>26</sup>Lys<sup>36</sup>GLP-1(8-37), Arg<sup>34</sup>Lys<sup>36</sup>GLP-1(8-37), Gly<sup>8</sup>Arg<sup>26</sup>GLP-1(8-37),

Gly<sup>8</sup>Arg<sup>34</sup>GLP-1(8-37), Gly<sup>8</sup>Lys<sup>36</sup>GLP-1(8-37), Gly<sup>8</sup>Arg<sup>26, 34</sup>Lys<sup>36</sup>GLP-1(8-37), Gly<sup>8</sup>Arg<sup>26</sup>Lys<sup>36</sup>GLP-1(8-37), or Gly<sup>8</sup>Arg<sup>34</sup>Lys<sup>36</sup>GLP-1(8-37).

In a further preferred embodiment, the parent peptide is Arg<sup>26</sup>Lys<sup>38</sup>GLP-1(8-38), Arg<sup>26, 34</sup>Lys<sup>38</sup>GLP-1(8-38), Arg<sup>26, 34</sup>Lys<sup>36,38</sup>GLP-1(8-38), Gly<sup>8</sup>Arg<sup>26</sup>Lys<sup>38</sup>GLP-1(8-38) or Gly<sup>8</sup>Arg<sup>26, 34</sup>Lys<sup>36,38</sup>GLP-1(8-38).

In a further preferred embodiment, the parent peptide is Arg<sup>26</sup>Lys<sup>39</sup>GLP-1(8-39), Arg<sup>26, 34</sup>Lys<sup>36,39</sup>GLP-1(8-39), Gly<sup>8</sup>Arg<sup>26</sup>Lys<sup>39</sup>GLP-1(8-39) or Gly<sup>8</sup>Arg<sup>26, 34</sup>Lys<sup>36,39</sup>GLP-1(8-39).

In a further preferred embodiment, the present invention relates to a GLP-1 derivative wherein the parent peptide is Arg<sup>34</sup>Lys<sup>40</sup>GLP-1(8-40), Arg<sup>26, 34</sup>Lys<sup>36,40</sup>GLP-1(8-40), Gly<sup>8</sup>Arg<sup>34</sup>Lys<sup>40</sup>GLP-1(8-40) or Gly<sup>8</sup>Arg<sup>26, 34</sup>Lys<sup>36,40</sup>GLP-1(8-40).

In a further preferred embodiment, the present invention relates to a GLP-1 derivative wherein the parent peptide is: Arg<sup>26</sup>GLP-1(8-36); Arg<sup>34</sup>GLP-1(8-36); Arg<sup>26, 34</sup>Lys<sup>36</sup>GLP-1(8-36); Arg<sup>26</sup>GLP-1(8-36)amide; Arg<sup>34</sup>GLP-1(8-36)amide; Arg<sup>26, 34</sup>Lys<sup>36</sup>GLP-1(8-36)amide; Arg<sup>26</sup>GLP-1(8-37); Arg<sup>34</sup>GLP-1(8-37); Arg<sup>26, 34</sup>Lys<sup>36</sup>GLP-1(8-37); Arg<sup>26</sup>GLP-1(8-38); Arg<sup>34</sup>GLP-1(8-38); Arg<sup>26, 34</sup>Lys<sup>38</sup>GLP-1(8-38); Arg<sup>26</sup>GLP-1(8-39); Arg<sup>34</sup>GLP-1(8-39); Arg<sup>26, 34</sup>Lys<sup>39</sup>GLP-1(8-39); Gly<sup>8</sup>Arg<sup>26</sup>GLP-1(8-36); Gly<sup>8</sup>Arg<sup>34</sup>GLP-1(8-36); Gly<sup>8</sup>Arg<sup>26</sup>GLP-1(8-36)amide; Gly<sup>8</sup>Arg<sup>34</sup>GLP-1(8-36)amide; Gly<sup>8</sup>Arg<sup>26, 34</sup>Lys<sup>36</sup>GLP-1(8-36)amide; Gly<sup>8</sup>Arg<sup>26</sup>GLP-1(8-37); Gly<sup>8</sup>Arg<sup>34</sup>GLP-1(8-37); Gly<sup>8</sup>Arg<sup>26, 34</sup>Lys<sup>36</sup>GLP-1(8-37); Gly<sup>8</sup>Arg<sup>26</sup>GLP-1(8-38); Gly<sup>8</sup>Arg<sup>34</sup>GLP-1(8-38); Gly<sup>8</sup>Arg<sup>26, 34</sup>Lys<sup>38</sup>GLP-1(8-38); Gly<sup>8</sup>Arg<sup>26</sup>GLP-1(8-39); Gly<sup>8</sup>Arg<sup>34</sup>GLP-1(8-39); Gly<sup>8</sup>Arg<sup>26, 34</sup>Lys<sup>39</sup>GLP-1(8-39); Val<sup>8</sup>Arg<sup>26, 34</sup>Lys<sup>36</sup>GLP-1(8-36); Val<sup>8</sup>Arg<sup>34</sup>GLP-1(8-36); Val<sup>8</sup>Arg<sup>26</sup>GLP-1(8-36)amide; Val<sup>8</sup>Arg<sup>34</sup>GLP-1(8-36)amide; Val<sup>8</sup>Arg<sup>26, 34</sup>Lys<sup>36</sup>GLP-1(8-36)amide; Val<sup>8</sup>Arg<sup>26</sup>GLP-1(8-37); Val<sup>8</sup>Arg<sup>34</sup>GLP-1(8-37); Val<sup>8</sup>Arg<sup>26, 34</sup>Lys<sup>36</sup>GLP-1(8-37); Val<sup>8</sup>Arg<sup>26</sup>GLP-1(8-38); Val<sup>8</sup>Arg<sup>34</sup>GLP-1(8-38); Val<sup>8</sup>Arg<sup>26, 34</sup>Lys<sup>38</sup>GLP-1(8-38); Val<sup>8</sup>Arg<sup>26</sup>GLP-1(8-39); Val<sup>8</sup>Arg<sup>34</sup>GLP-1(8-39); Val<sup>8</sup>Arg<sup>26, 34</sup>Lys<sup>39</sup>GLP-1(8-39); Ser<sup>8</sup>Arg<sup>26</sup>GLP-1(8-36); Ser<sup>8</sup>Arg<sup>34</sup>GLP-1(8-36); Ser<sup>8</sup>Arg<sup>26, 34</sup>Lys<sup>36</sup>GLP-1(8-36); Ser<sup>8</sup>Arg<sup>26</sup>GLP-1(8-36)amide; Ser<sup>8</sup>Arg<sup>34</sup>GLP-1(8-36)amide;

Ser<sup>8</sup>Arg<sup>26, 34</sup>Lys<sup>36</sup>GLP-1(8-36)amide; Ser<sup>8</sup>Arg<sup>26</sup>GLP-1(8-37); Ser<sup>8</sup>Arg<sup>34</sup>GLP-1(8-37); Ser<sup>8</sup>Arg<sup>26, 34</sup>Lys<sup>36</sup>GLP-1(8-37); Ser<sup>8</sup>Arg<sup>26</sup>GLP-1(8-38); Ser<sup>8</sup>Arg<sup>34</sup>GLP-1(8-38); Ser<sup>8</sup>Arg<sup>26, 34</sup>Lys<sup>38</sup>GLP-1(8-38); Ser<sup>8</sup>Arg<sup>26</sup>GLP-1(8-39); Ser<sup>8</sup>Arg<sup>34</sup>GLP-1(8-39); Ser<sup>8</sup>Arg<sup>26, 34</sup>Lys<sup>39</sup>GLP-1(8-39); Thr<sup>8</sup>Arg<sup>26</sup>GLP-1(8-36); Thr<sup>8</sup>Arg<sup>34</sup>GLP-1(8-36); Thr<sup>8</sup>Arg<sup>26, 34</sup>Lys<sup>36</sup>GLP-1(8-36)amide; Thr<sup>8</sup>Arg<sup>26</sup>GLP-1(8-36)amide; Thr<sup>8</sup>Arg<sup>26, 34</sup>Lys<sup>36</sup>GLP-1(8-36)amide; Thr<sup>8</sup>Arg<sup>26</sup>GLP-1(8-37); Thr<sup>8</sup>Arg<sup>34</sup>GLP-1(8-37); Thr<sup>8</sup>Arg<sup>26, 34</sup>Lys<sup>36</sup>GLP-1(8-37); Thr<sup>8</sup>Arg<sup>26</sup>GLP-1(8-38); Thr<sup>8</sup>Arg<sup>34</sup>GLP-1(8-38); Thr<sup>8</sup>Arg<sup>26, 34</sup>Lys<sup>38</sup>GLP-1(8-38); Thr<sup>8</sup>Arg<sup>26</sup>GLP-1(8-39); Thr<sup>8</sup>Arg<sup>34</sup>GLP-1(8-39); Thr<sup>8</sup>Arg<sup>26, 34</sup>Lys<sup>39</sup>GLP-1(8-39); Val<sup>8</sup>Glu<sup>35</sup>Arg<sup>26, 34</sup>Lys<sup>36</sup>GLP-1(8-36)amide; Val<sup>8</sup>Glu<sup>36</sup>Arg<sup>26, 34</sup>Lys<sup>37</sup>GLP-1(8-37); Val<sup>8</sup>Glu<sup>37</sup>Arg<sup>26, 34</sup>Lys<sup>38</sup>GLP-1(8-38); Val<sup>8</sup>Glu<sup>38</sup>Arg<sup>26, 34</sup>Lys<sup>39</sup>GLP-1(8-39); Val<sup>8</sup>Glu<sup>35</sup>Arg<sup>26, 34</sup>Lys<sup>36</sup>GLP-1(8-36); Val<sup>8</sup>Glu<sup>35</sup>Arg<sup>26, 34</sup>Lys<sup>36</sup>GLP-1(8-36)amide; Val<sup>8</sup>Glu<sup>36</sup>Arg<sup>26, 34</sup>Lys<sup>37</sup>GLP-1(8-37); Val<sup>8</sup>Glu<sup>37</sup>Arg<sup>26, 34</sup>Lys<sup>38</sup>GLP-1(8-38); Val<sup>8</sup>Glu<sup>38</sup>Arg<sup>26, 34</sup>Lys<sup>39</sup>GLP-1(8-39); Val<sup>8</sup>Asp<sup>35</sup>Arg<sup>26, 34</sup>Lys<sup>36</sup>GLP-1(8-36); Val<sup>8</sup>Asp<sup>35</sup>Arg<sup>26, 34</sup>Lys<sup>36</sup>GLP-1(8-36)amide; Val<sup>8</sup>Asp<sup>36</sup>Arg<sup>26, 34</sup>Lys<sup>37</sup>GLP-1(8-37); Val<sup>8</sup>Asp<sup>37</sup>Arg<sup>26, 34</sup>Lys<sup>38</sup>GLP-1(8-38); Val<sup>8</sup>Asp<sup>38</sup>Arg<sup>26, 34</sup>Lys<sup>39</sup>GLP-1(8-39).

















Other preferred embodiments will be described using the following abbreviations:

Glut=N<sup>ε</sup>-(γ-L-glutamyl)  
 Aspa=N<sup>ε</sup>-(β-L-asparagyl)  
 Glyc=N<sup>ε</sup>-glycyl  
 GAB=N<sup>ε</sup>-(α-(γ-aminobutanoyl)  
 ADod=N<sup>α</sup>-dodecanoyl  
 ATet=N<sup>α</sup>-tetradecanoyl  
 AHex=N<sup>α</sup>-hexadecanoyl  
 AOct=N<sup>α</sup>-octadecanoyl  
 ALit=N<sup>α</sup>-lithocholyl  
 GDod=N<sup>γ</sup>-dodecanoyl  
 GTet=N<sup>γ</sup>-tetradecanoyl  
 GHex=N<sup>γ</sup>-hexadecanoyl  
 GOct=N<sup>γ</sup>-octadecanoyl  
 GLit=N<sup>γ</sup>-lithocholyl

Other preferred GLP-1 derivatives of the present invention are:

Arg<sup>26</sup>Lys<sup>34</sup>-(Glut-ADod) GLP-1(7-36); Arg<sup>34</sup>Lys<sup>26</sup>-(Glut-ADod) GLP-1(7-36); Arg<sup>26,34</sup>Lys<sup>36</sup>-(Glut-ADod) GLP-1(7-36); Arg<sup>26</sup>Lys<sup>34</sup>-(Glut-ADod) GLP-1(7-36)amide; Arg<sup>34</sup>Lys<sup>26</sup>-(Glut-ADod) GLP-1(7-36)amide; Arg<sup>26,34</sup>Lys<sup>36</sup>-(Glut-ADod) GLP-1(7-36)amide; Arg<sup>26</sup>Lys<sup>34</sup>-(Glut-ADod) GLP-1(7-37); Arg<sup>34</sup>Lys<sup>26</sup>-(Glut-ADod) GLP-1(7-37); Arg<sup>26,34</sup>Lys<sup>36</sup>-(Glut-ADod) GLP-1(7-37); Arg<sup>26</sup>Lys<sup>34</sup>-(Glut-ADod) GLP-1(7-38); Arg<sup>34</sup>Lys<sup>26</sup>-(Glut-ADod) GLP-1(7-38); Arg<sup>26,34</sup>Lys<sup>38</sup>-(Glut-ADod) GLP-1(7-38); Arg<sup>26</sup>Lys<sup>34</sup>-(Glut-ADod) GLP-1(7-39); Arg<sup>34</sup>Lys<sup>26</sup>-(Glut-ADod) GLP-1(7-39); Arg<sup>26,34</sup>Lys<sup>39</sup>-(Glut-ADod) GLP-1(7-39); Gly<sup>8</sup>Arg<sup>26</sup>Lys<sup>34</sup>-(Glut-ADod) GLP-1(7-36); Gly<sup>8</sup>Arg<sup>34</sup>Lys<sup>26</sup>-(Glut-ADod) GLP-1(7-36); Gly<sup>8</sup>Arg<sup>26,34</sup>Lys<sup>36</sup>-(Glut-ADod) GLP-1(7-36); Gly<sup>8</sup>Arg<sup>26,34</sup>Lys<sup>38</sup>-(Glut-ADod) GLP-1(7-36)amide; Gly<sup>8</sup>Arg<sup>34</sup>Lys<sup>26</sup>-(Glut-ADod) GLP-1(7-36)amide; Gly<sup>8</sup>Arg<sup>26,34</sup>Lys<sup>36</sup>-(Glut-ADod) GLP-1(7-36)amide; Gly<sup>8</sup>Arg<sup>26,34</sup>Lys<sup>38</sup>-(Glut-ADod) GLP-1(7-37); Gly<sup>8</sup>Arg<sup>34</sup>Lys<sup>26</sup>-(Glut-ADod) GLP-1(7-37); Gly<sup>8</sup>Arg<sup>26,34</sup>Lys<sup>36</sup>-(Glut-ADod) GLP-1(7-37); Gly<sup>8</sup>Arg<sup>26,34</sup>Lys<sup>38</sup>-(Glut-ADod) GLP-1(7-38); Gly<sup>8</sup>Arg<sup>34</sup>Lys<sup>26</sup>-(Glut-ADod) GLP-13(7-38); Gly<sup>8</sup>Arg<sup>26,34</sup>Lys<sup>38</sup>-(Glut-ADod) GLP-1(7-38); Gly<sup>8</sup>Arg<sup>26</sup>Lys<sup>34</sup>-(Glut-ADod) GLP-1(7-39); Gly<sup>8</sup>Arg<sup>34</sup>Lys<sup>26</sup>-(Glut-ADod) GLP-1(7-39); Gly<sup>8</sup>Arg<sup>26,34</sup>Lys<sup>39</sup>-(Glut-ADod) GLP-1(7-39); Val<sup>8</sup>Arg<sup>26</sup>Lys<sup>34</sup>-(Glut-ADod) GLP-1(7-36); Val<sup>8</sup>Arg<sup>34</sup>Lys<sup>26</sup>-(Glut-ADod) GLP-1(7-36); Val<sup>8</sup>Arg<sup>26,34</sup>Lys<sup>36</sup>-(Glut-ADod) GLP-1(7-36); Val<sup>8</sup>Arg<sup>26,34</sup>Lys<sup>38</sup>-(Glut-ADod) GLP-1(7-36)amide; Val<sup>8</sup>Arg<sup>34</sup>Lys<sup>26</sup>-(Glut-ADod) GLP-1(7-36)amide; Val<sup>8</sup>Arg<sup>26,34</sup>Lys<sup>36</sup>-(Glut-ADod) GLP-1(7-36)amide; Val<sup>8</sup>Arg<sup>26,34</sup>Lys<sup>38</sup>-(Glut-ADod) GLP-1(7-37); Val<sup>8</sup>Arg<sup>34</sup>Lys<sup>26</sup>-(Glut-ADod) GLP-1(7-37); Val<sup>8</sup>Arg<sup>26,34</sup>Lys<sup>36</sup>-(Glut-ADod) GLP-1(7-37); Val<sup>8</sup>Arg<sup>26,34</sup>Lys<sup>38</sup>-(Glut-ADod) GLP-1(7-38); Val<sup>8</sup>Arg<sup>34</sup>Lys<sup>26</sup>-(Glut-ADod) GLP-1(7-38); Val<sup>8</sup>Arg<sup>26,34</sup>Lys<sup>36</sup>-(Glut-ADod) GLP-1(7-39); Val<sup>8</sup>Arg<sup>34</sup>Lys<sup>26</sup>-(Glut-ADod) GLP-1(7-39); Val<sup>8</sup>Arg<sup>26,34</sup>Lys<sup>39</sup>-(Glut-ADod) GLP-1(7-39); Ser<sup>8</sup>Arg<sup>26</sup>Lys<sup>34</sup>-(Glut-ADod) GLP-1(7-36); Ser<sup>8</sup>Arg<sup>34</sup>Lys<sup>26</sup>-(Glut-ADod) GLP-1(7-36); Ser<sup>8</sup>Arg<sup>26,34</sup>Lys<sup>36</sup>-(Glut-ADod) GLP-1(7-36); Ser<sup>8</sup>Arg<sup>26,34</sup>Lys<sup>38</sup>-(Glut-ADod) GLP-1(7-36)amide; Ser<sup>8</sup>Arg<sup>34</sup>Lys<sup>26</sup>-(Glut-ADod) GLP-1(7-36)amide; Ser<sup>8</sup>Arg<sup>26,34</sup>Lys<sup>36</sup>-(Glut-ADod) GLP-1(7-36)amide; Ser<sup>8</sup>Arg<sup>26,34</sup>Lys<sup>38</sup>-(Glut-ADod) GLP-1(7-37); Ser<sup>8</sup>Arg<sup>34</sup>Lys<sup>26</sup>-(Glut-ADod) GLP-1(7-37); Ser<sup>8</sup>Arg<sup>26,34</sup>Lys<sup>36</sup>-(Glut-ADod) GLP-1(7-37); Ser<sup>8</sup>Arg<sup>26,34</sup>Lys<sup>38</sup>-(Glut-ADod) GLP-1(7-38); Ser<sup>8</sup>Arg<sup>34</sup>Lys<sup>26</sup>-(Glut-ADod) GLP-1(7-38); Ser<sup>8</sup>Arg<sup>26,34</sup>Lys<sup>38</sup>-(Glut-ADod) GLP-1(7-38); Ser<sup>8</sup>Arg<sup>26</sup>Lys<sup>34</sup>-(Glut-ADod) GLP-1(7-39); Ser<sup>8</sup>Arg<sup>34</sup>Lys<sup>26</sup>-(Glut-ADod) GLP-1(7-39);

Ser<sup>8</sup>Arg<sup>34</sup>Lys<sup>26</sup>-(Glut-ADod) GLP-1(7-39); Ser<sup>8</sup>Arg<sup>26,34</sup>Lys<sup>39</sup>-(Glut-ADod) GLP-1(7-39); Thr<sup>8</sup>Arg<sup>26</sup>Lys<sup>34</sup>-(Glut-ADod) GLP-1(7-36); Thr<sup>8</sup>Arg<sup>34</sup>Lys<sup>26</sup>-(Glut-ADod) GLP-1(7-36); Thr<sup>8</sup>Arg<sup>26,34</sup>Lys<sup>36</sup>-(Glut-ADod) GLP-1(7-36)amide; Thr<sup>8</sup>Arg<sup>26,34</sup>Lys<sup>38</sup>-(Glut-ADod) GLP-1(7-36)amide; Thr<sup>8</sup>Arg<sup>34</sup>Lys<sup>26</sup>-(Glut-ADod) GLP-1(7-37); Thr<sup>8</sup>Arg<sup>26,34</sup>Lys<sup>36</sup>-(Glut-ADod) GLP-1(7-37); Thr<sup>8</sup>Arg<sup>26,34</sup>Lys<sup>38</sup>-(Glut-ADod) GLP-1(7-38); Thr<sup>8</sup>Arg<sup>34</sup>Lys<sup>26</sup>-(Glut-ADod) GLP-1(7-38); Thr<sup>8</sup>Arg<sup>26,34</sup>Lys<sup>38</sup>-(Glut-ADod) GLP-1(7-38); Thr<sup>8</sup>Arg<sup>26</sup>Lys<sup>34</sup>-(Glut-ADod) GLP-1(7-39); Thr<sup>8</sup>Arg<sup>34</sup>Lys<sup>26</sup>-(Glut-ADod) GLP-1(7-39); Thr<sup>8</sup>Arg<sup>26,34</sup>Lys<sup>39</sup>-(Glut-ADod) GLP-1(7-39); Gly<sup>8</sup>Glu<sup>35</sup>Arg<sup>26,34</sup>Lys<sup>36</sup>-(Glut-ADod) GLP-1(7-36); Gly<sup>8</sup>Glu<sup>35</sup>Arg<sup>26,34</sup>Lys<sup>36</sup>-(Glut-ADod) GLP-1(7-36)amide; Gly<sup>8</sup>Glu<sup>36</sup>Arg<sup>26,34</sup>Lys<sup>37</sup>-(Glut-ADod) GLP-1(7-37); Gly<sup>8</sup>Glu<sup>37</sup>Arg<sup>26,34</sup>Lys<sup>38</sup>-(Glut-ADod) GLP-1(7-38); Gly<sup>8</sup>Glu<sup>38</sup>Arg<sup>26,34</sup>Lys<sup>39</sup>-(Glut-ADod) GLP-1(7-39); Gly<sup>8</sup>Glu<sup>35</sup>Arg<sup>26,34</sup>Lys<sup>36</sup>-(Glut-ADod) GLP-1(7-36)amide; Gly<sup>8</sup>Glu<sup>36</sup>Arg<sup>26,34</sup>Lys<sup>37</sup>-(Glut-ADod) GLP-1(7-37); Gly<sup>8</sup>Glu<sup>37</sup>Arg<sup>26,34</sup>Lys<sup>38</sup>-(Glut-ADod) GLP-1(7-38); Gly<sup>8</sup>Glu<sup>38</sup>Arg<sup>26,34</sup>Lys<sup>39</sup>-(Glut-ADod) GLP-1(7-39); Gly<sup>8</sup>Asp<sup>35</sup>Arg<sup>26,34</sup>Lys<sup>36</sup>-(Glut-ADod) GLP-1(7-36); Gly<sup>8</sup>Asp<sup>35</sup>Arg<sup>26,34</sup>Lys<sup>36</sup>-(Glut-ADod) GLP-1(7-36)amide; Gly<sup>8</sup>Asp<sup>36</sup>Arg<sup>26,34</sup>Lys<sup>37</sup>-(Glut-ADod) GLP-1(7-37); Gly<sup>8</sup>Asp<sup>37</sup>Arg<sup>26,34</sup>Lys<sup>38</sup>-(Glut-ADod) GLP-1(7-38); Gly<sup>8</sup>Asp<sup>38</sup>Arg<sup>26,34</sup>Lys<sup>39</sup>-(Glut-ADod) GLP-1(7-39); Gly<sup>8</sup>Asp<sup>35</sup>Arg<sup>26,34</sup>Lys<sup>36</sup>-(Glut-ADod) GLP-1(7-36); Gly<sup>8</sup>Asp<sup>35</sup>Arg<sup>26,34</sup>Lys<sup>36</sup>-(Glut-ADod) GLP-1(7-36)amide; Gly<sup>8</sup>Asp<sup>36</sup>Arg<sup>26,34</sup>Lys<sup>37</sup>-(Glut-ADod) GLP-1(7-37); Gly<sup>8</sup>Asp<sup>37</sup>Arg<sup>26,34</sup>Lys<sup>38</sup>-(Glut-ADod) GLP-1(7-38); Gly<sup>8</sup>Asp<sup>38</sup>Arg<sup>26,34</sup>Lys<sup>39</sup>-(Glut-ADod) GLP-1(7-39); Val<sup>8</sup>Glu<sup>35</sup>Arg<sup>26,34</sup>Lys<sup>36</sup>-(Glut-ADod) GLP-1(7-36); Val<sup>8</sup>Glu<sup>35</sup>Arg<sup>26,34</sup>Lys<sup>36</sup>-(Glut-ADod) GLP-1(7-36)amide; Val<sup>8</sup>Glu<sup>36</sup>Arg<sup>26,34</sup>Lys<sup>37</sup>-(Glut-ADod) GLP-1(7-37); Val<sup>8</sup>Glu<sup>37</sup>Arg<sup>26,34</sup>Lys<sup>38</sup>-(Glut-ADod) GLP-1(7-38); Val<sup>8</sup>Glu<sup>38</sup>Arg<sup>26,34</sup>Lys<sup>39</sup>-(Glut-ADod) GLP-1(7-39); Val<sup>8</sup>Glu<sup>35</sup>Arg<sup>26,34</sup>Lys<sup>36</sup>-(Glut-ADod) GLP-1(7-36); Val<sup>8</sup>Glu<sup>35</sup>Arg<sup>26,34</sup>Lys<sup>36</sup>-(Glut-ADod) GLP-1(7-36)amide; Val<sup>8</sup>Glu<sup>36</sup>Arg<sup>26,34</sup>Lys<sup>37</sup>-(Glut-ADod) GLP-1(7-37); Val<sup>8</sup>Glu<sup>37</sup>Arg<sup>26,34</sup>Lys<sup>38</sup>-(Glut-ADod) GLP-1(7-38); Val<sup>8</sup>Glu<sup>38</sup>Arg<sup>26,34</sup>Lys<sup>39</sup>-(Glut-ADod) GLP-1(7-39); Val<sup>8</sup>Asp<sup>35</sup>Arg<sup>26,34</sup>Lys<sup>36</sup>-(Glut-ADod) GLP-1(7-36); Val<sup>8</sup>Asp<sup>35</sup>Arg<sup>26,34</sup>Lys<sup>36</sup>-(Glut-ADod) GLP-1(7-36)amide; Val<sup>8</sup>Asp<sup>36</sup>Arg<sup>26,34</sup>Lys<sup>37</sup>-(Glut-ADod) GLP-1(7-37); Val<sup>8</sup>Asp<sup>37</sup>Arg<sup>26,34</sup>Lys<sup>38</sup>-(Glut-ADod) GLP-1(7-38); Val<sup>8</sup>Asp<sup>38</sup>Arg<sup>26,34</sup>Lys<sup>39</sup>-(Glut-ADod) GLP-1(7-39); Val<sup>8</sup>Asp<sup>35</sup>Arg<sup>26,34</sup>Lys<sup>36</sup>-(Glut-ADod) GLP-1(7-36); Ser<sup>8</sup>Glu<sup>35</sup>Arg<sup>26,34</sup>Lys<sup>36</sup>-(Glut-ADod) GLP-1(7-36)amide; Ser<sup>8</sup>Glu<sup>36</sup>Arg<sup>26,34</sup>Lys<sup>37</sup>-(Glut-ADod) GLP-1(7-37); Ser<sup>8</sup>Glu<sup>37</sup>Arg<sup>26,34</sup>Lys<sup>38</sup>-(Glut-ADod) GLP-1(7-38); Ser<sup>8</sup>Glu<sup>38</sup>Arg<sup>26,34</sup>Lys<sup>39</sup>-(Glut-ADod) GLP-1(7-39); Ser<sup>8</sup>Glu<sup>35</sup>Arg<sup>26,34</sup>Lys<sup>36</sup>-(Glut-ADod) GLP-1(7-36); Ser<sup>8</sup>Glu<sup>35</sup>Arg<sup>26,34</sup>Lys<sup>36</sup>-(Glut-ADod) GLP-1(7-36)amide; Ser<sup>8</sup>Glu<sup>36</sup>Arg<sup>26,34</sup>Lys<sup>37</sup>-(Glut-ADod) GLP-1(7-37); Ser<sup>8</sup>Glu<sup>37</sup>Arg<sup>26,34</sup>Lys<sup>38</sup>-(Glut-ADod) GLP-1(7-38); Ser<sup>8</sup>Glu<sup>38</sup>Arg<sup>26,34</sup>Lys<sup>39</sup>-(Glut-ADod) GLP-1(7-39); Ser<sup>8</sup>Asp<sup>35</sup>Arg<sup>26,34</sup>Lys<sup>36</sup>-(Glut-ADod) GLP-1(7-36); Ser<sup>8</sup>Asp<sup>35</sup>Arg<sup>26,34</sup>Lys<sup>36</sup>-(Glut-ADod) GLP-1(7-36)amide;











































































