

[54] **RECHARGEABLE TISSUE STIMULATING SYSTEM**

[75] Inventor: **Joseph H. Schulman**, Los Angeles, Calif.

[73] Assignee: **G. D. Searle & Co.**, Skokie, Ill.

[22] Filed: **July 26, 1974**

[21] Appl. No.: **491,974**

Related U.S. Application Data

[63] Continuation of Ser. No. 401,406, Sept. 27, 1973, abandoned.

[52] U.S. Cl. **128/419 PS**

[51] Int. Cl.² **A61N 1/36**

[58] Field of Search 128/2.05 S, 2.06 E, 2.1 A, 128/418, 419 C, 419 EP, 419 PG, 419 PS, 419 R, 420, 421, 422, 423, 419 PT; 307/91; 320/31, 32, 37, 39; 328/84; 336/84

References Cited

UNITED STATES PATENTS

3,195,540	7/1965	Waller	128/419 PG
3,409,007	11/1968	Fuller	128/2.06 E
3,426,748	2/1969	Bowers	128/419 PS
3,454,012	7/1969	Raddi	128/419 PG
3,612,041	10/1971	Ragsdale	128/2.06 A

FOREIGN PATENTS OR APPLICATIONS

87,174	5/1966	France	128/419 PS
--------	--------	--------------	------------

OTHER PUBLICATIONS

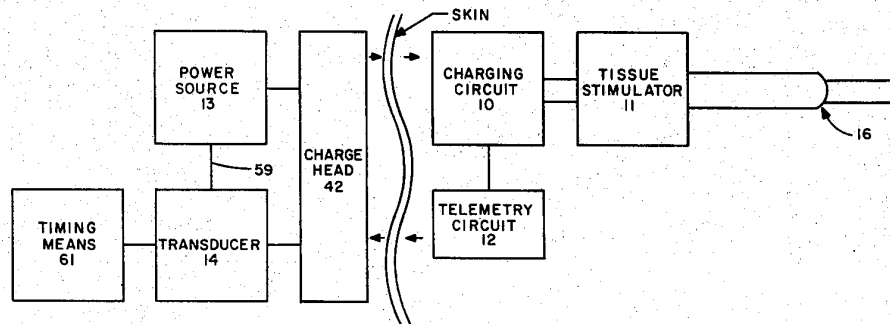
Evalenko et al., "Medical Instrumentation," Mar-Apr., 1967, pp. 13-16.

Primary Examiner—William E. Kamm
Attorney, Agent, or Firm—Walter C. Ramm; Charles H. Thomas, Jr.; Peter J. Sgarbossa

[57] **ABSTRACT**

A rechargeable tissue stimulating system with a telemetry controlled power source. A constant current power source acting through an induction coil externally located with respect to a living patient is used to induce current flow in a charging circuit located beneath the skin of the patient. The charging circuit, in turn, recharges a battery which powers an electronic generator used for applying electrical pulses to stimulate living tissue in order to maintain bodily functions in the patient. A telemetry circuit connected to the charging circuit provides a magnetic output signal controlling externally located means associated with the power source. Such external means in response to this signal modulate the strength of the charging magnetic field, as well as provide visual or audio indication of proper charging as well as the proper positioning of the external power source with respect to the implanted charging circuit, completion of the proper charging interval to restore the amount of current used, and improper charging.

11 Claims, 12 Drawing Figures



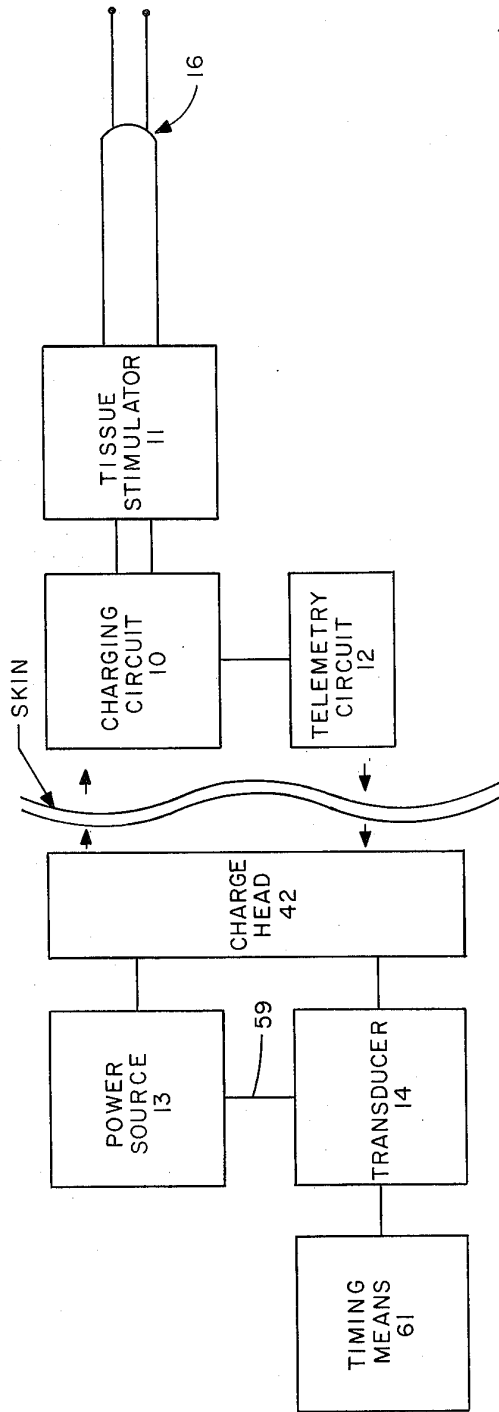


FIG. 1

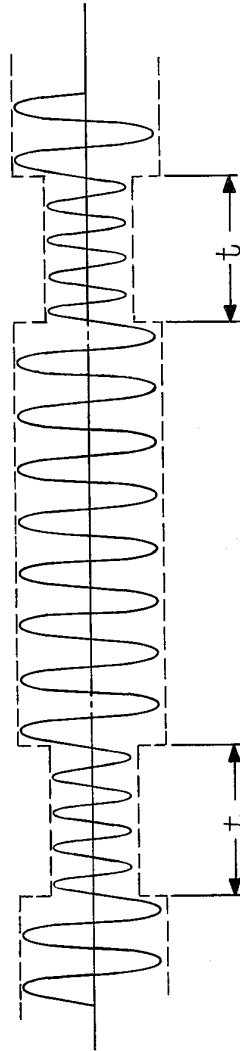


FIG. 9

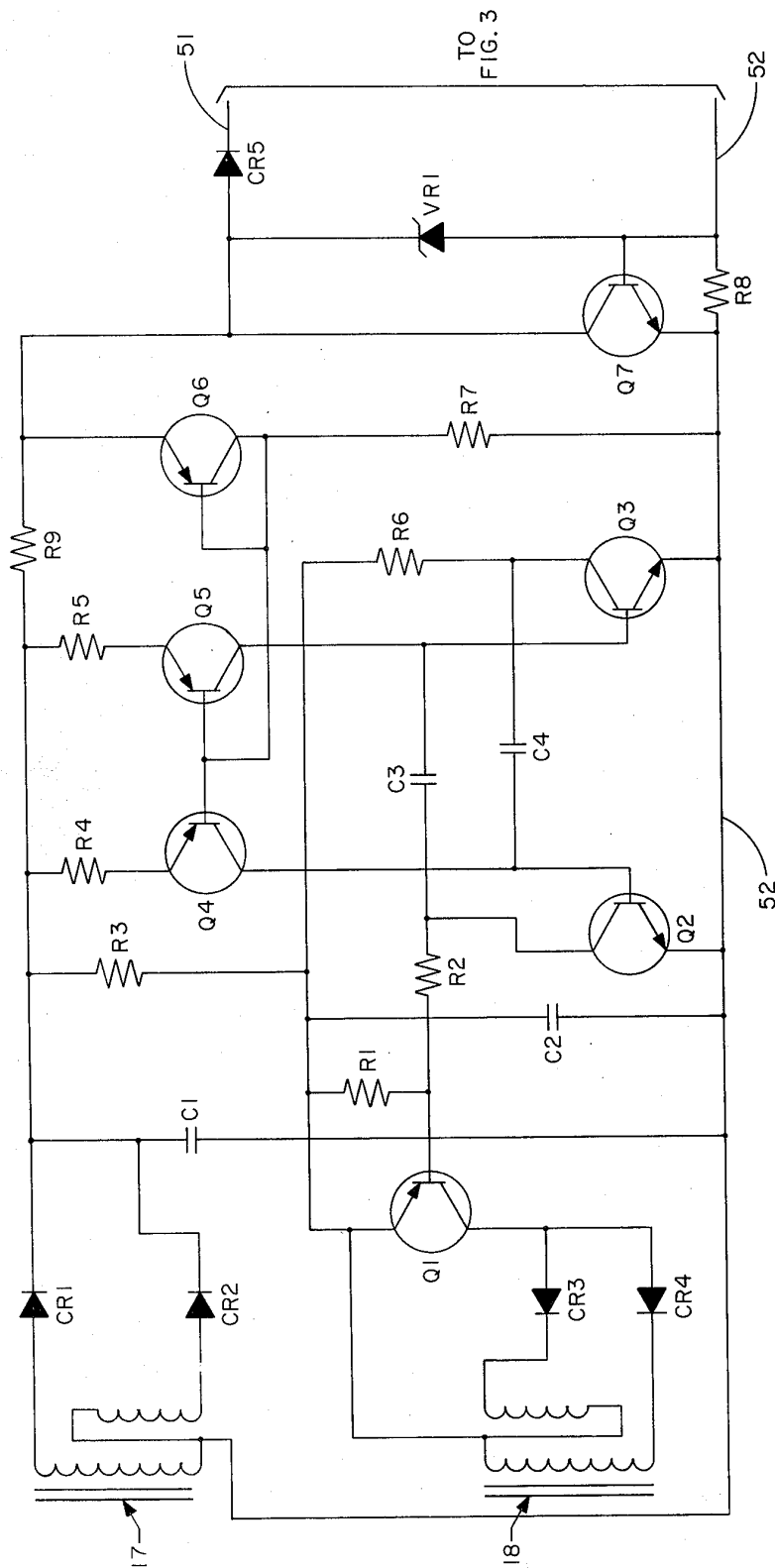
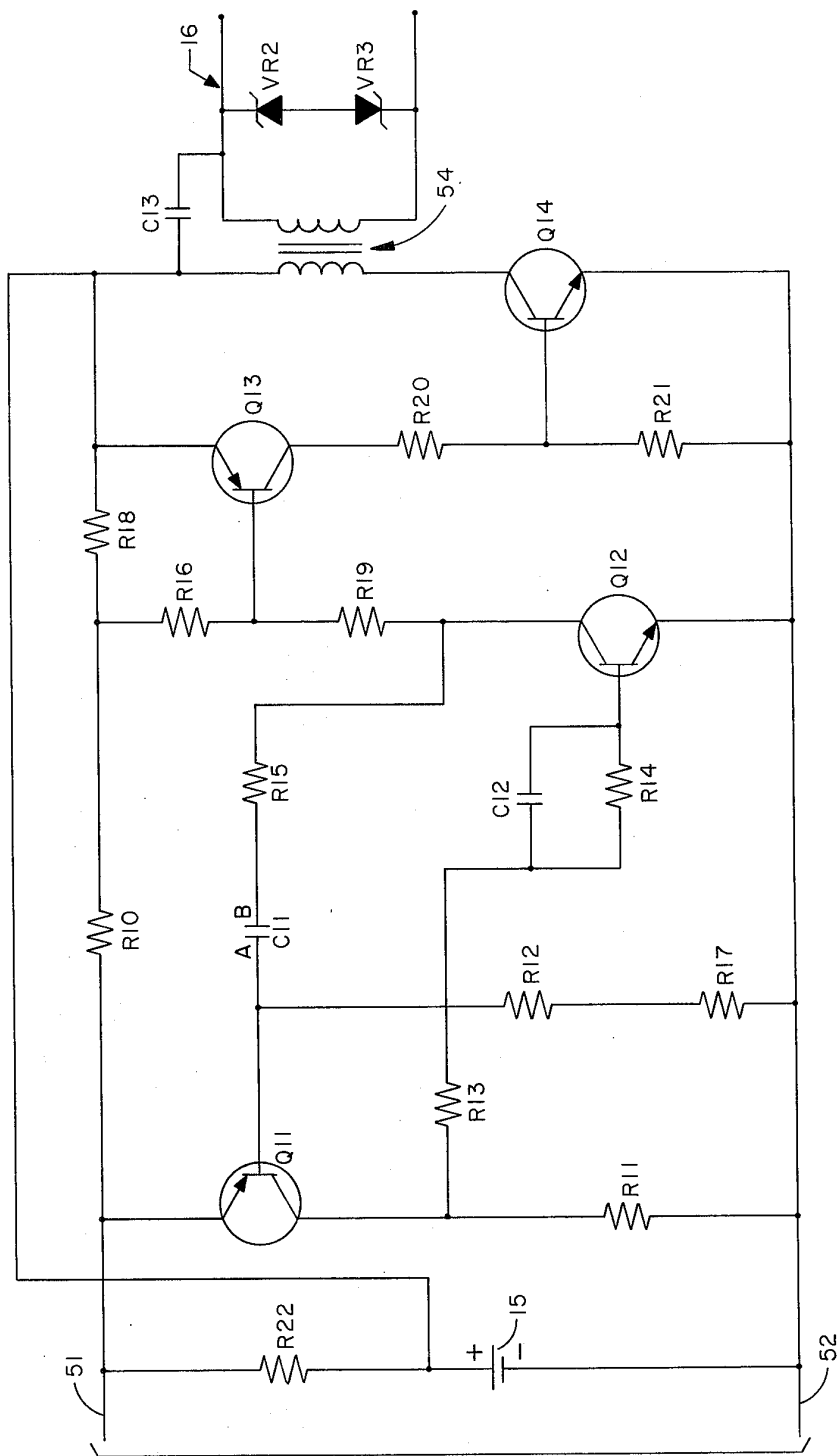


FIG. 2



FROM
FIG. 2

TISSUE STIMULATOR

FIG. 3

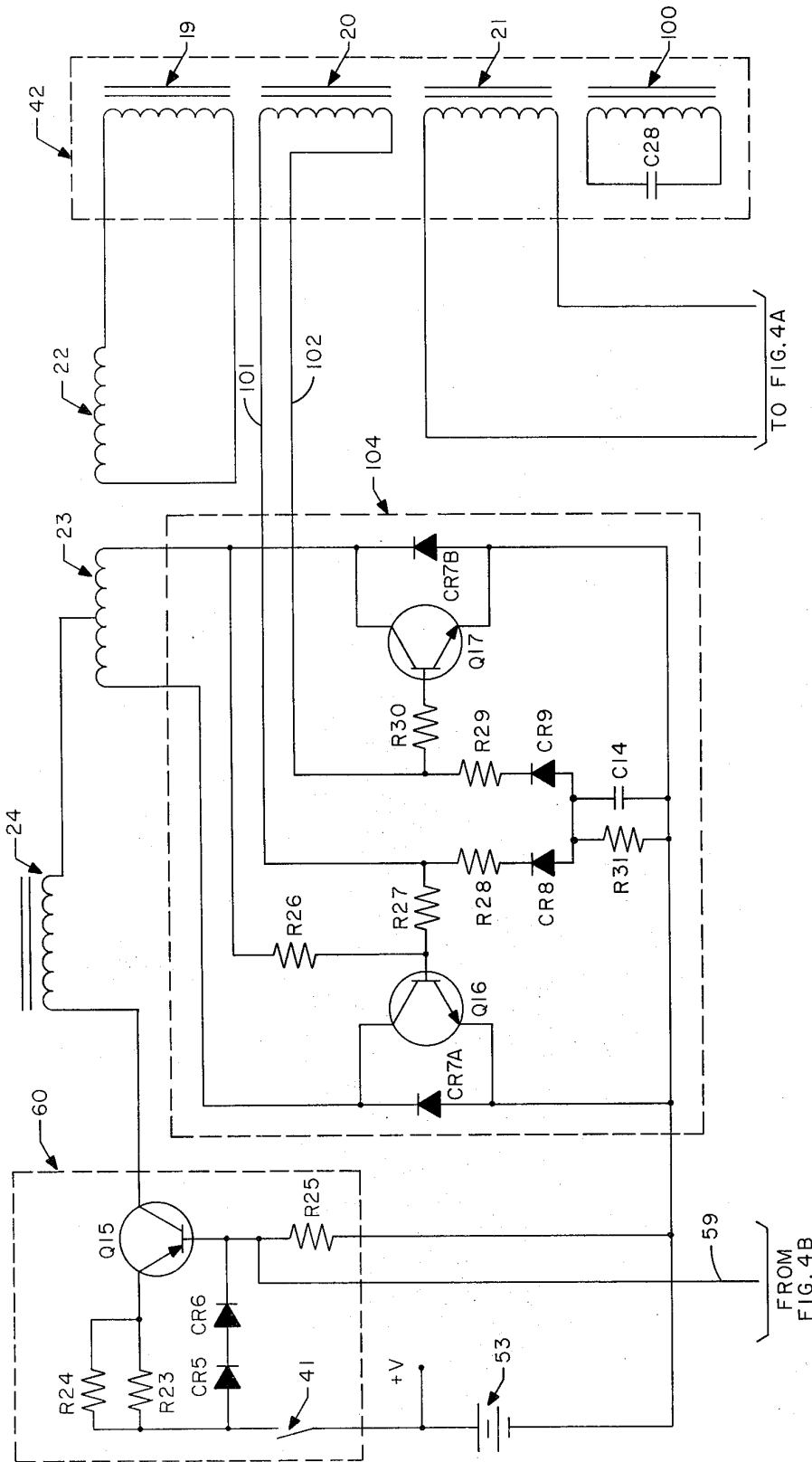


FIG. 4

Explore Litigation Insights

Docket Alarm provides insights to develop a more informed litigation strategy and the peace of mind of knowing you're on top of things.

Real-Time Litigation Alerts



Keep your litigation team up-to-date with **real-time alerts** and advanced team management tools built for the enterprise, all while greatly reducing PACER spend.

Our comprehensive service means we can handle Federal, State, and Administrative courts across the country.

Advanced Docket Research



With over 230 million records, Docket Alarm's cloud-native docket research platform finds what other services can't. Coverage includes Federal, State, plus PTAB, TTAB, ITC and NLRB decisions, all in one place.

Identify arguments that have been successful in the past with full text, pinpoint searching. Link to case law cited within any court document via Fastcase.

Analytics At Your Fingertips



Learn what happened the last time a particular judge, opposing counsel or company faced cases similar to yours.

Advanced out-of-the-box PTAB and TTAB analytics are always at your fingertips.

API

Docket Alarm offers a powerful API (application programming interface) to developers that want to integrate case filings into their apps.

LAW FIRMS

Build custom dashboards for your attorneys and clients with live data direct from the court.

Automate many repetitive legal tasks like conflict checks, document management, and marketing.

FINANCIAL INSTITUTIONS

Litigation and bankruptcy checks for companies and debtors.

E-DISCOVERY AND LEGAL VENDORS

Sync your system to PACER to automate legal marketing.