



US007110580B2

(12) **United States Patent**  
**Bostrom**

(10) **Patent No.:** **US 7,110,580 B2**

(45) **Date of Patent:** **Sep. 19, 2006**

(54) **DISTRIBUTED BIOMETRIC ACCESS CONTROL METHOD AND APPARATUS**

*Primary Examiner*—Vikram Bali

(74) *Attorney, Agent, or Firm*—Nixon Peabody, LLP

(75) **Inventor:** **Susan J. Bostrom**, San Antonio, TX (US)

(57) **ABSTRACT**

(73) **Assignee:** **NextgenID, Inc.**, San Antonio, TX (US)

(\*) **Notice:** Subject to any disclaimer, the term of this patent is extended or adjusted under 35 U.S.C. 154(b) by 0 days.

The present invention is directed to an access control apparatus and method. Enrollment is conducted at a centralized server and enrollment data, such as identification data is downloaded to plural local access units at respective entrances to a restricted area. The local access units then collect data of a person upon an attempted entry in to the area and compare the data with downloaded enrollment data to determine if the person is authorized for access. If the person is authorized, an access control device is operated to open a door, gate, or the like of the entrance. The enrollment data can be primary biometric data or primary and secondary biometric data, said secondary biometric data can be collected at the local access units. If a secondary type of biometric data is collected at the local access units and is correlated to data stored on the local access unit, data of the same type is compared to the downloaded data for access control. The primary enrollment data can be non-environmentally affected data, such as fingerprint parameter data and the secondary type of data can be environmentally affected data, such as facial parameter data. In cases where the primary biometric data does not correspond to stored primary biometric data, secondary biometric data can be collected and authenticated and new primary biometric data collected for potential addition to a user's primary biometric enrollments.

(21) **Appl. No.:** **10/384,070**

(22) **Filed:** **Mar. 10, 2003**

(65) **Prior Publication Data**

US 2004/0036574 A1 Feb. 26, 2004

(51) **Int. Cl.**  
**G06K 9/00** (2006.01)

(52) **U.S. Cl.** ..... **382/124**; 382/118; 382/116

(58) **Field of Classification Search** ..... 382/115–119, 382/124–127; 902/3–6; 235/380, 382, 382.5; 713/182, 186; 340/5.2, 5.53, 5.1, 5.8, 5.83  
See application file for complete search history.

(56) **References Cited**

U.S. PATENT DOCUMENTS

4,993,068	A *	2/1991	Piosenka et al. ....	713/186
5,802,199	A *	9/1998	Pare et al. ....	382/115
6,160,903	A *	12/2000	Hamid et al. ....	382/115
6,496,595	B1 *	12/2002	Puchek et al. ....	382/124

\* cited by examiner

**4 Claims, 4 Drawing Sheets**

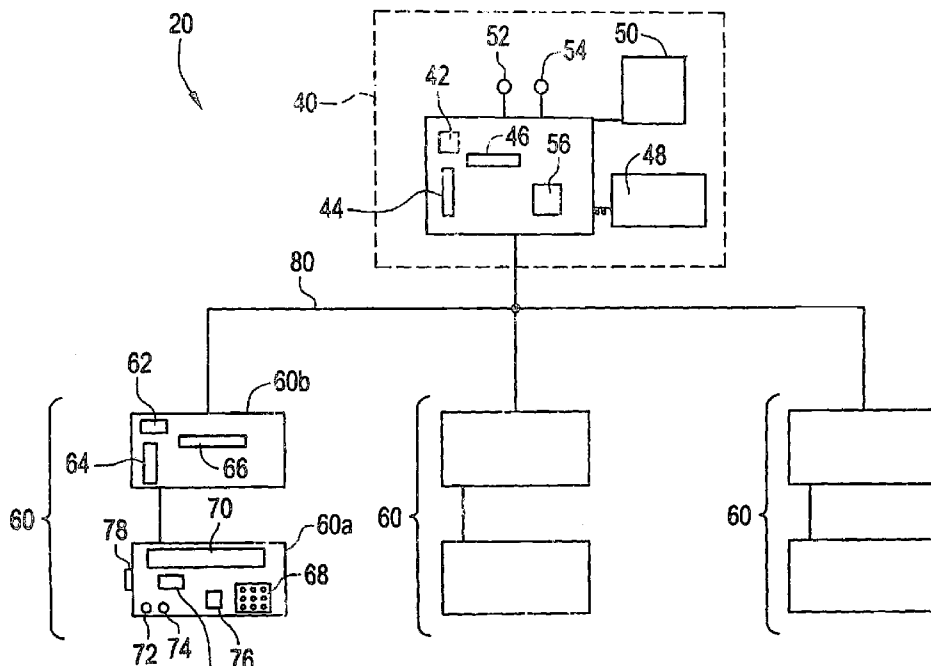


FIG. 1

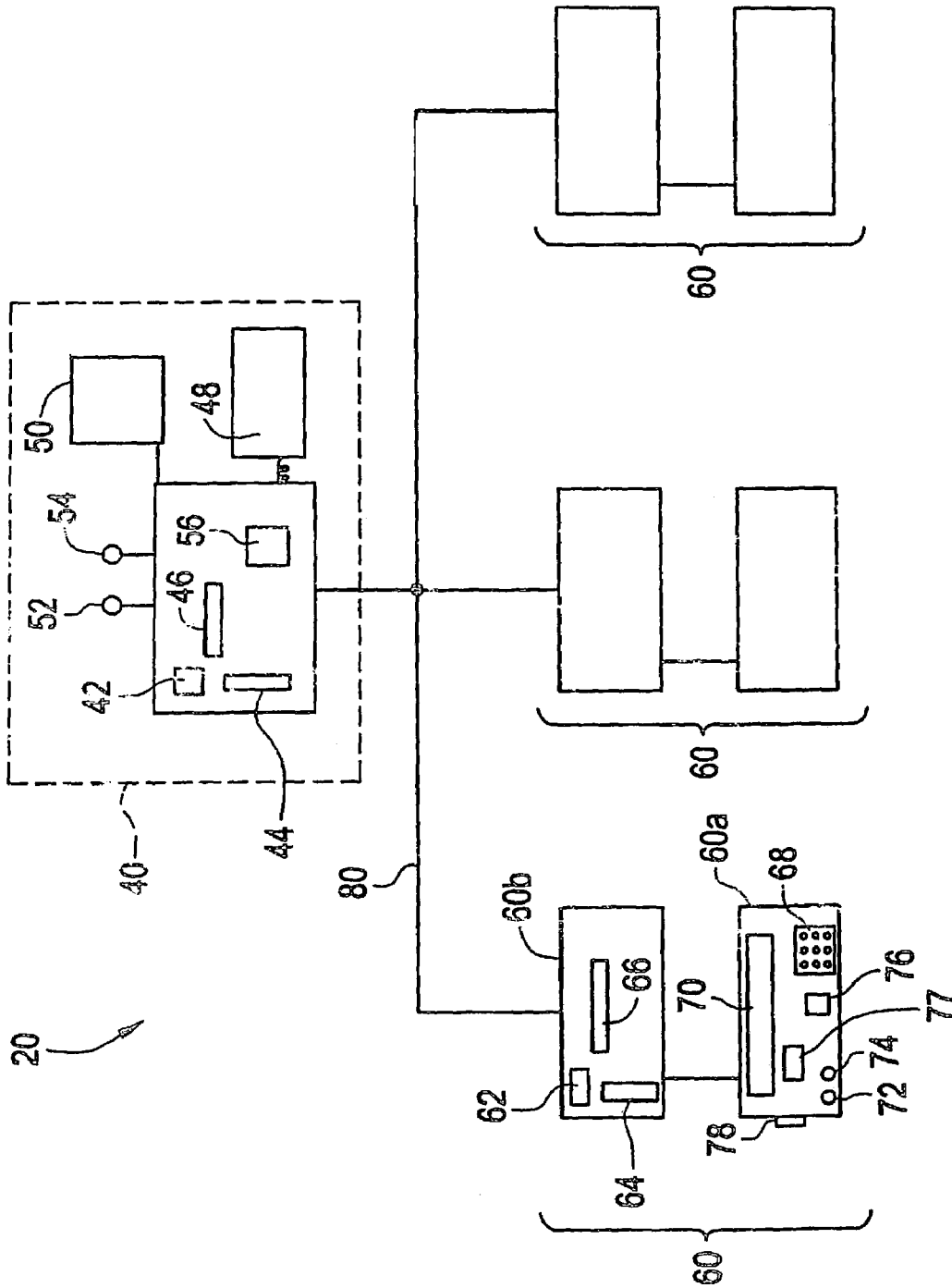


FIG. 2

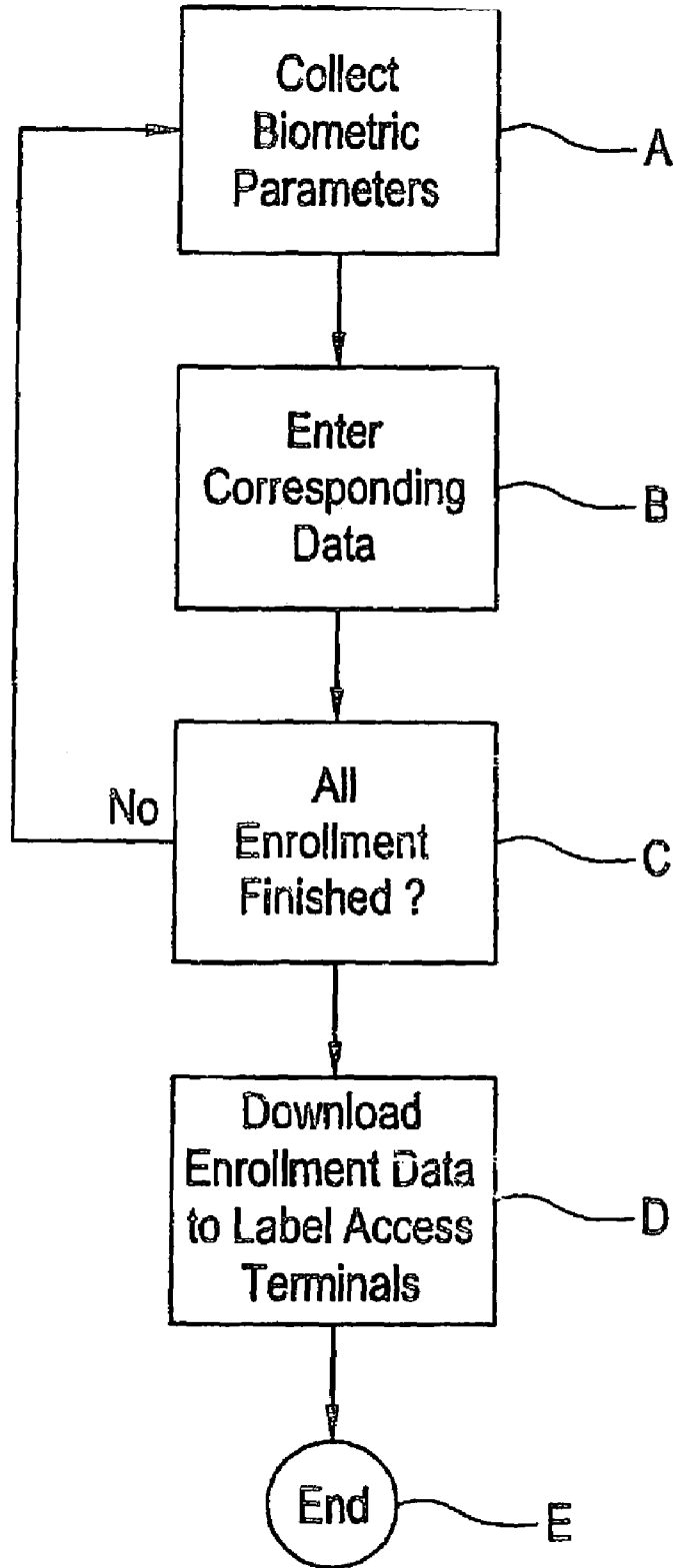
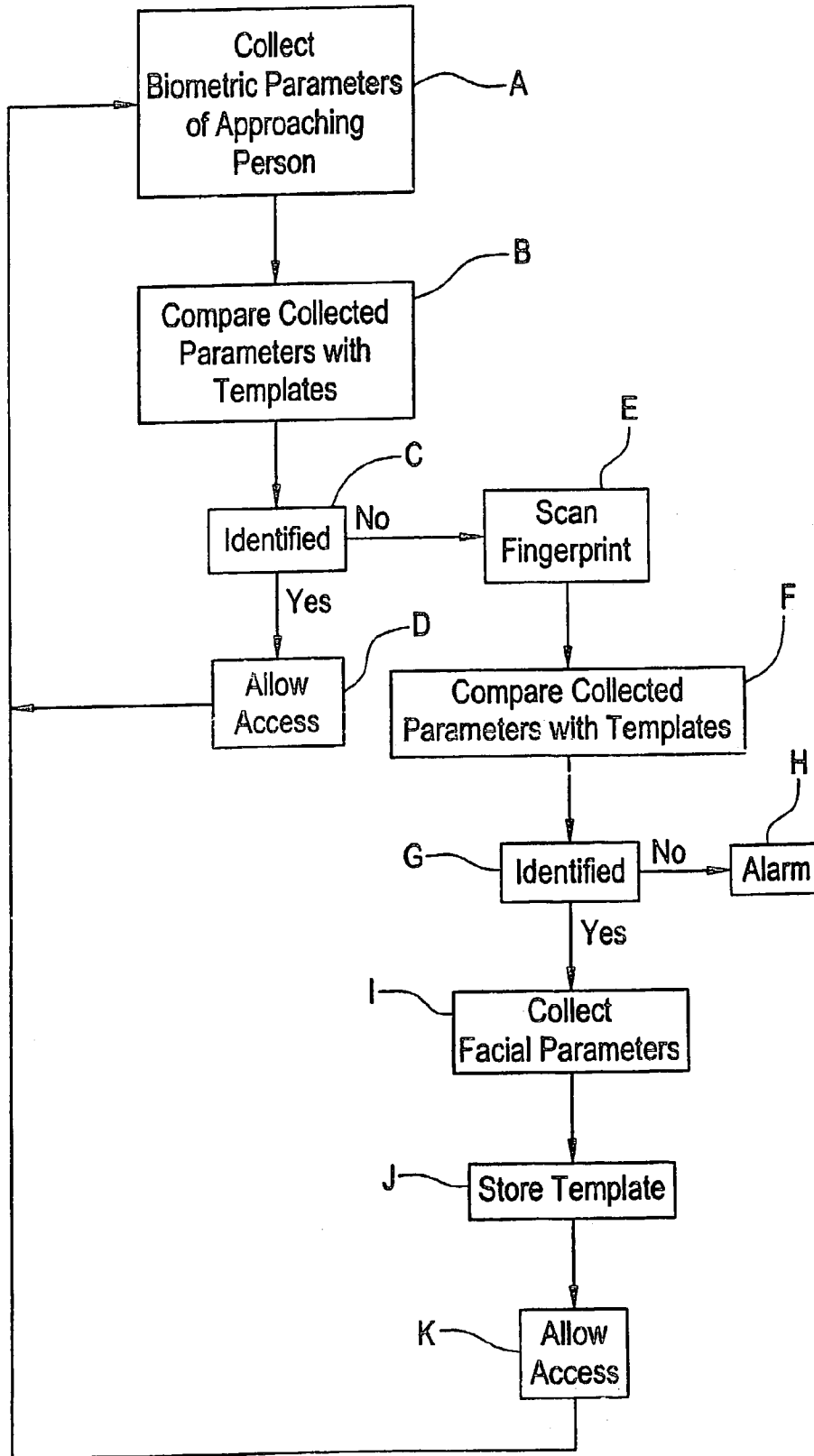
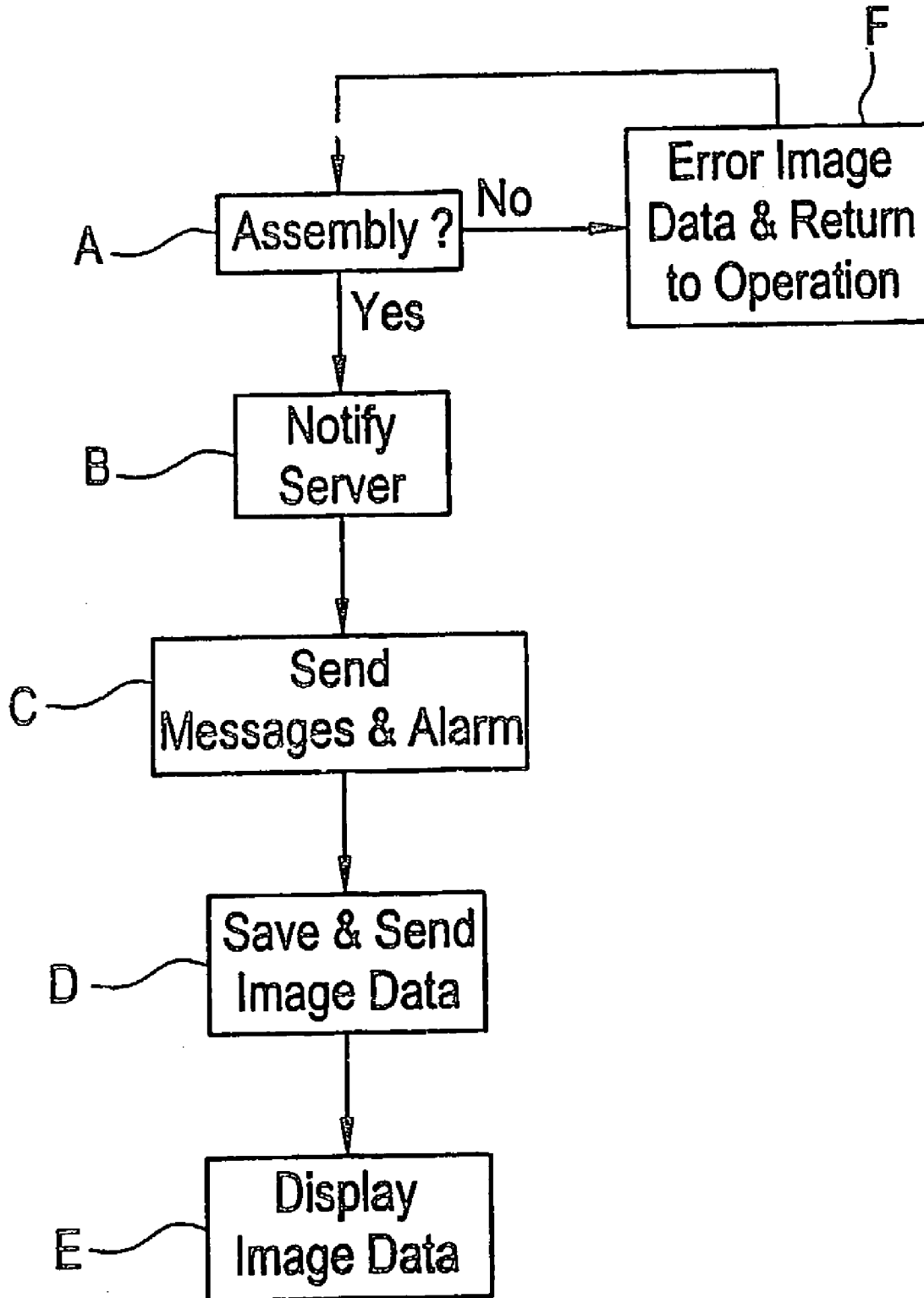


FIG. 3



# FIG. 4



# Explore Litigation Insights

Docket Alarm provides insights to develop a more informed litigation strategy and the peace of mind of knowing you're on top of things.

## Real-Time Litigation Alerts



Keep your litigation team up-to-date with **real-time alerts** and advanced team management tools built for the enterprise, all while greatly reducing PACER spend.

Our comprehensive service means we can handle Federal, State, and Administrative courts across the country.

## Advanced Docket Research



With over 230 million records, Docket Alarm's cloud-native docket research platform finds what other services can't. Coverage includes Federal, State, plus PTAB, TTAB, ITC and NLRB decisions, all in one place.

Identify arguments that have been successful in the past with full text, pinpoint searching. Link to case law cited within any court document via Fastcase.

## Analytics At Your Fingertips



Learn what happened the last time a particular judge, opposing counsel or company faced cases similar to yours.

Advanced out-of-the-box PTAB and TTAB analytics are always at your fingertips.

## API

Docket Alarm offers a powerful API (application programming interface) to developers that want to integrate case filings into their apps.

## LAW FIRMS

Build custom dashboards for your attorneys and clients with live data direct from the court.

Automate many repetitive legal tasks like conflict checks, document management, and marketing.

## FINANCIAL INSTITUTIONS

Litigation and bankruptcy checks for companies and debtors.

## E-DISCOVERY AND LEGAL VENDORS

Sync your system to PACER to automate legal marketing.