



US007404086B2

(12) **United States Patent**
Sands et al.

(10) **Patent No.:** **US 7,404,086 B2**
(45) **Date of Patent:** **Jul. 22, 2008**

(54) **METHOD AND APPARATUS FOR BIOMETRIC AUTHENTICATION**

(75) Inventors: **Justin M. Sands**, Reston, VA (US);
Christopher A. Sands, Herndon, VA (US); **Arthur J. Sands, Jr.**, Falls Church, VA (US)

(73) Assignee: **AC Technology, Inc.**, Herndon, VA (US)

(*) Notice: Subject to any disclaimer, the term of this patent is extended or adjusted under 35 U.S.C. 154(b) by 806 days.

(21) Appl. No.: **10/350,003**

(22) Filed: **Jan. 24, 2003**

(65) **Prior Publication Data**

US 2004/0148526 A1 Jul. 29, 2004

(51) **Int. Cl.**
H04L 9/32 (2006.01)

(52) **U.S. Cl.** **713/186**

(58) **Field of Classification Search** 713/186
See application file for complete search history.

(56) **References Cited**

U.S. PATENT DOCUMENTS

6,256,737 B1 * 7/2001 Bianco et al. 713/186

| | | | |
|-------------------|---------|--------------------|---------|
| 7,003,670 B2 * | 2/2006 | Heaven et al. | 713/186 |
| 7,039,812 B2 * | 5/2006 | Kawan et al. | 713/186 |
| 2002/0174347 A1 * | 11/2002 | Ting | 713/186 |
| 2003/0154382 A1 * | 8/2003 | Vicard | 713/186 |

* cited by examiner

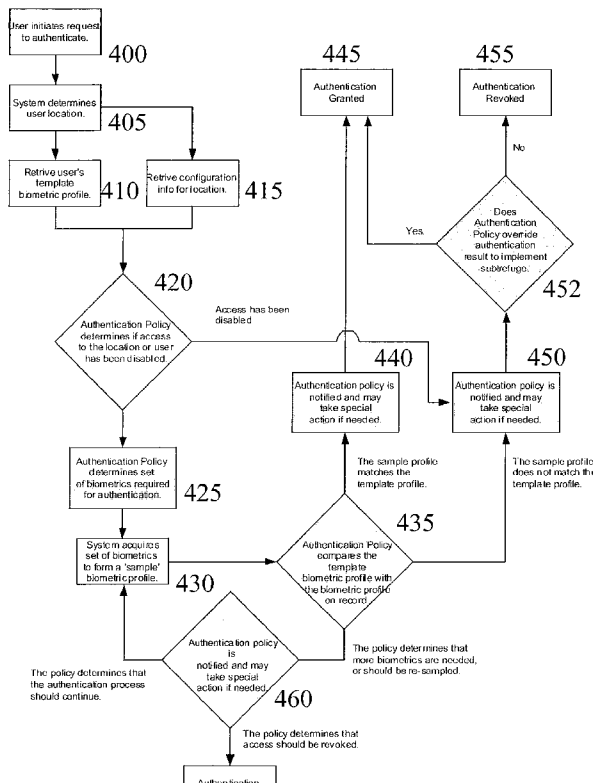
Primary Examiner—Matthew B Smithers

(74) *Attorney, Agent, or Firm*—Bingham McCutchen LLP

(57) **ABSTRACT**

A biometric authentication method and system may be implemented in a client server architecture to provide substantial access control security and ease of administration. Users are enrolled in the system by providing multiple biometric measurements which are stored in a database as part of the user's biometric profile. Upon attempted access of a computer, the biometric authentication engine determines which biometrics are required and what the biometric matching criteria are based on the location of the computer, time of day and other security conditions. If the user is determined not to be authentic, a security policy may cause an action to occur such as revoking the user's access privileges or causing the login attempt to appear to be successful while the authorities are summoned.

57 Claims, 4 Drawing Sheets



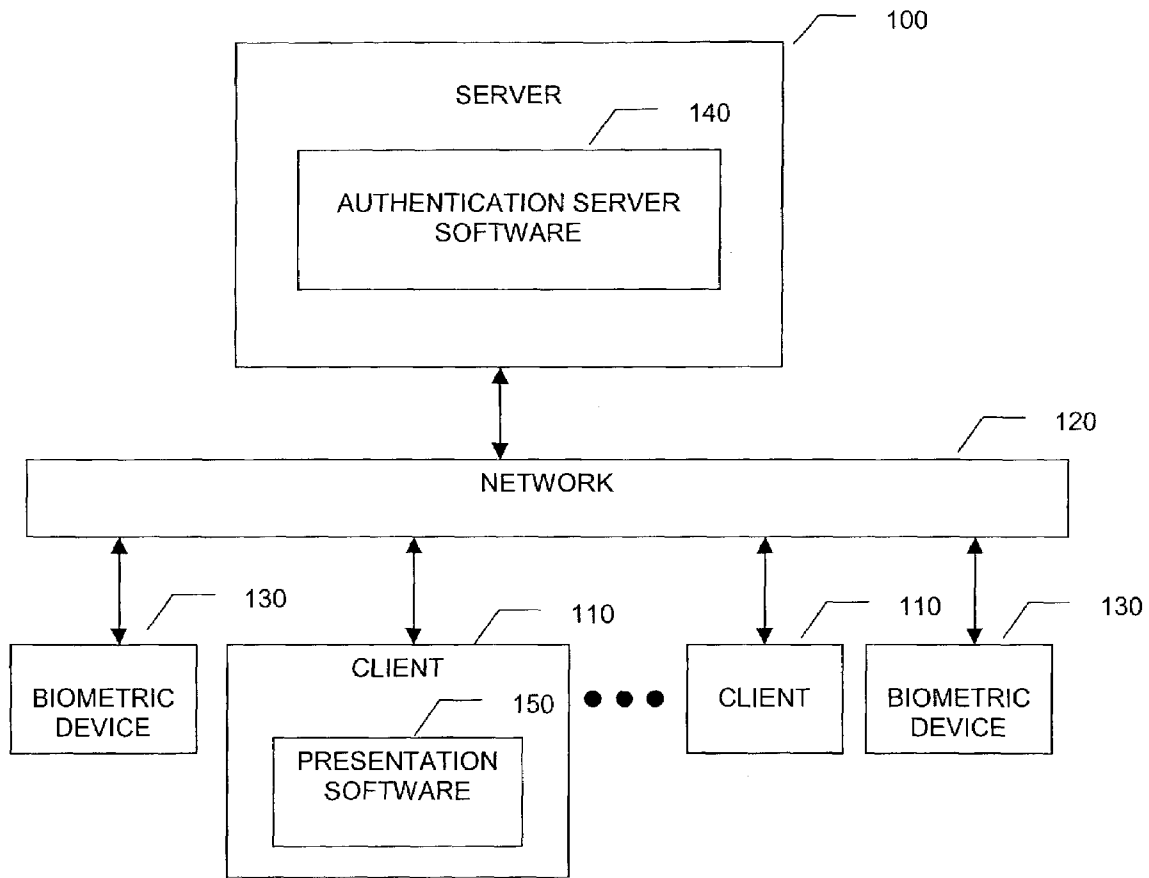


FIGURE 1

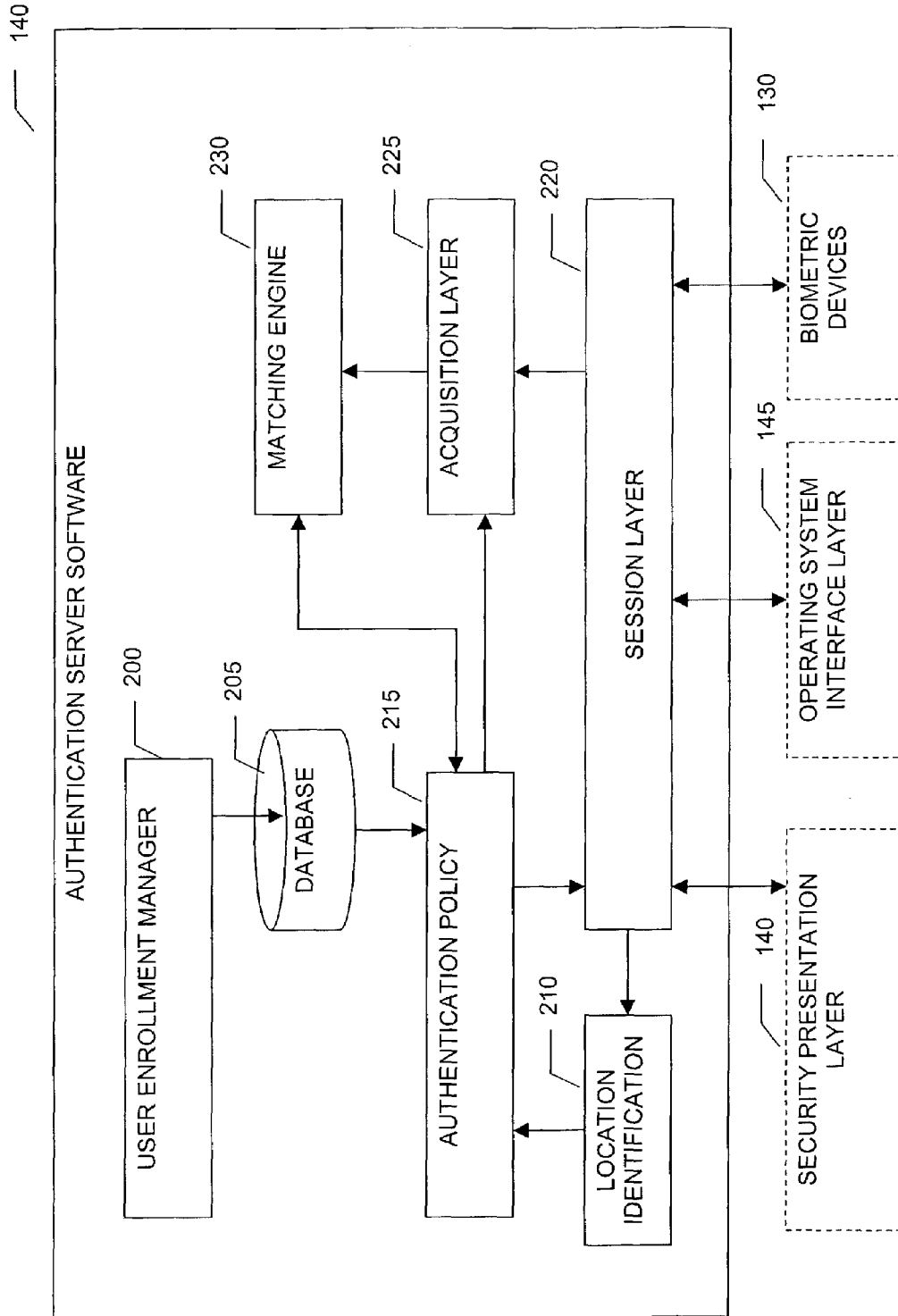


FIGURE 2

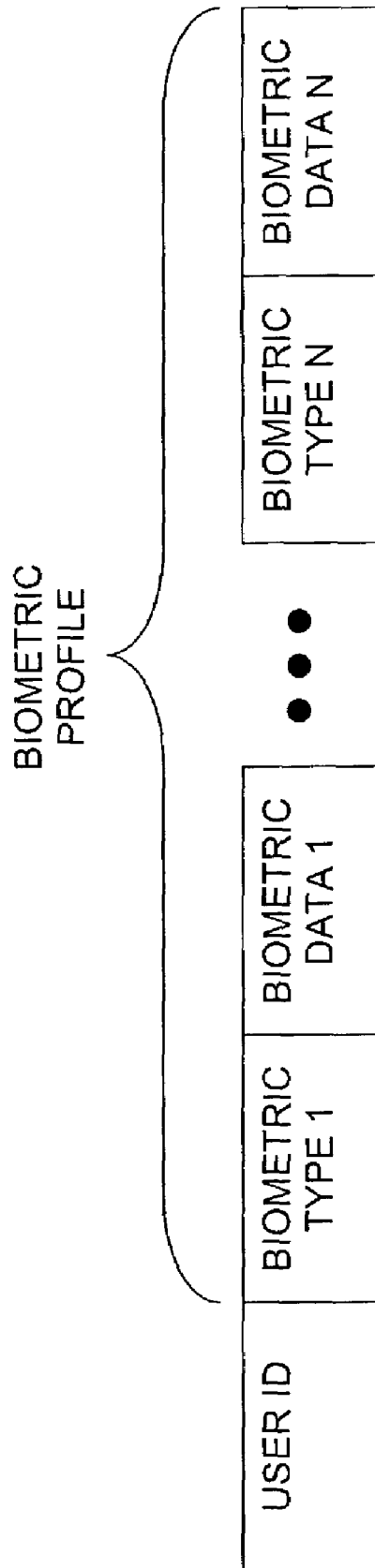
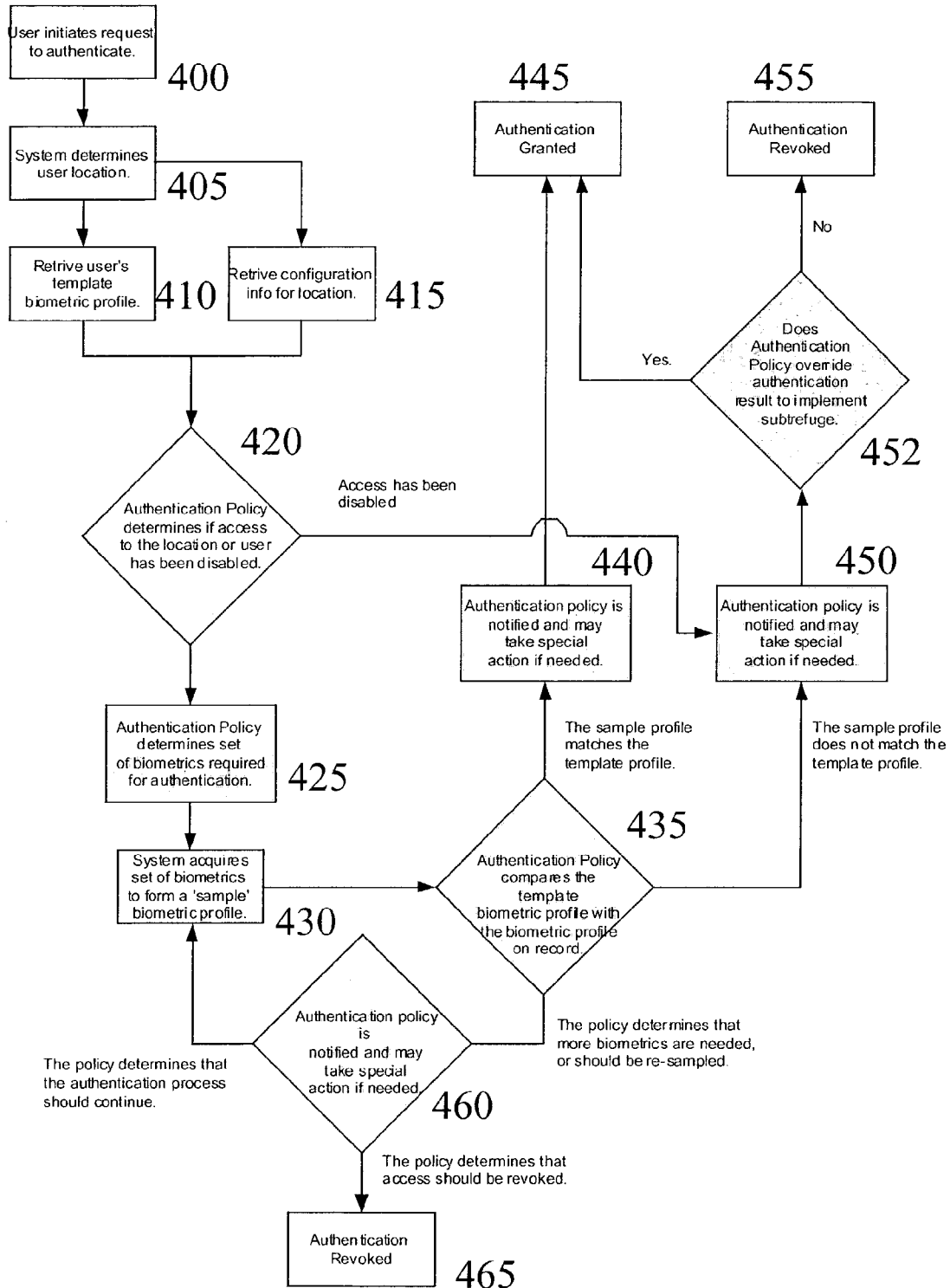


FIGURE 3

FIGURE 4



Explore Litigation Insights

Docket Alarm provides insights to develop a more informed litigation strategy and the peace of mind of knowing you're on top of things.

Real-Time Litigation Alerts



Keep your litigation team up-to-date with **real-time alerts** and advanced team management tools built for the enterprise, all while greatly reducing PACER spend.

Our comprehensive service means we can handle Federal, State, and Administrative courts across the country.

Advanced Docket Research



With over 230 million records, Docket Alarm's cloud-native docket research platform finds what other services can't. Coverage includes Federal, State, plus PTAB, TTAB, ITC and NLRB decisions, all in one place.

Identify arguments that have been successful in the past with full text, pinpoint searching. Link to case law cited within any court document via Fastcase.

Analytics At Your Fingertips



Learn what happened the last time a particular judge, opposing counsel or company faced cases similar to yours.

Advanced out-of-the-box PTAB and TTAB analytics are always at your fingertips.

API

Docket Alarm offers a powerful API (application programming interface) to developers that want to integrate case filings into their apps.

LAW FIRMS

Build custom dashboards for your attorneys and clients with live data direct from the court.

Automate many repetitive legal tasks like conflict checks, document management, and marketing.

FINANCIAL INSTITUTIONS

Litigation and bankruptcy checks for companies and debtors.

E-DISCOVERY AND LEGAL VENDORS

Sync your system to PACER to automate legal marketing.