

(12) **United States Patent**  
**Hamid et al.**

(10) **Patent No.:** **US 6,877,097 B2**  
 (45) **Date of Patent:** **Apr. 5, 2005**

(54) **SECURITY ACCESS METHOD AND APPARATUS**

(75) Inventors: **Larry Hamid**, Ottawa (CA); **Derek Bouius**, Ottawa (CA); **Albert Hum**, Ottawa (CA)

(73) Assignee: **ActivCard, Inc.**, Fremont, CA (US)

(\*) Notice: Subject to any disclaimer, the term of this patent is extended or adjusted under 35 U.S.C. 154(b) by 913 days.

(21) Appl. No.: **09/812,833**

(22) Filed: **Mar. 21, 2001**

(65) **Prior Publication Data**

US 2002/0138767 A1 Sep. 26, 2002

(51) **Int. Cl.**<sup>7</sup> ..... **H04L 9/32**

(52) **U.S. Cl.** ..... **713/186; 713/200; 713/202; 713/182; 713/185; 382/115; 382/124; 382/116; 382/125; 340/5.8; 340/5.82; 340/10.42; 340/523; 340/541; 340/572.4; 902/3; 705/5; 705/54; 707/3; 707/6**

(58) **Field of Search** ..... **713/186, 185, 713/200, 201, 202, 182; 382/115, 116, 124, 125; 340/5.8, 5.82, 10.42, 541, 572.4, 572.7, 523; 902/3; 707/3, 6; 705/54, 5**

(56) **References Cited**

**U.S. PATENT DOCUMENTS**

6,047,281 A \* 4/2000 Wilson et al. .... 707/3  
 6,122,394 A \* 9/2000 Neukermans et al. .... 382/124  
 6,219,439 B1 \* 4/2001 Burger ..... 382/115  
 6,311,272 B1 \* 10/2001 Gressel ..... 713/186

6,317,544 B1 \* 11/2001 Diehl et al. .... 385/115  
 6,320,974 B1 \* 11/2001 Glaze et al. .... 382/115  
 6,327,376 B1 \* 12/2001 Harkin ..... 382/124  
 6,484,260 B1 \* 11/2002 Scott et al. .... 713/186  
 6,628,810 B1 \* 9/2003 Harkin ..... 382/116  
 6,720,874 B2 \* 4/2004 Fufido et al. .... 340/541  
 6,751,734 B1 \* 6/2004 Uchida ..... 713/186  
 6,798,898 B1 \* 9/2004 Patton et al. .... 382/128

\* cited by examiner

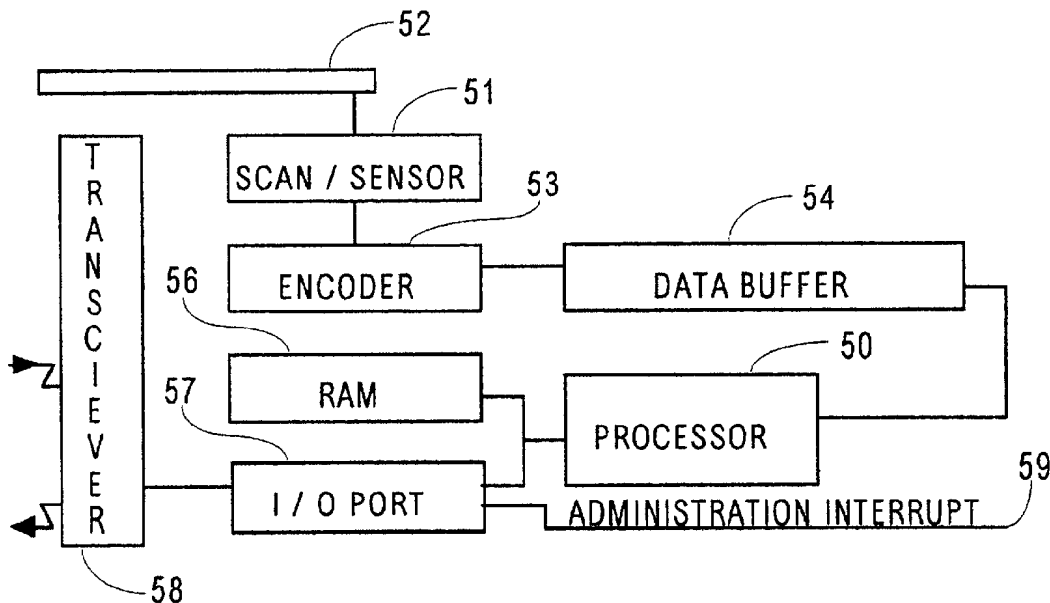
*Primary Examiner*—Ly V. Hua

(74) *Attorney, Agent, or Firm*—Freedman & Associates

(57) **ABSTRACT**

A portable biometric device enables a designated person to unlock any one portal exclusive of other portals of a secure entity and or a secure service by choosing which of their personal biometric characteristics is presented to the portable biometric device. The portable biometric device includes a biometric sensor such that a biometric characteristic of a person for example a finger pattern is read dependent upon the person presenting the biometric characteristic to the biometric sensor. The reading is encoded in order for a processor to determine if the biometric characteristic has been predesignated for access via a predesignated one of the plurality of portals. If so, the processor selects an appropriate authorization code which is communicated by wireless transmission for unlocking the predesignated one of the portals, to the exclusion of any other of the portals. In an alternate example the processor is a central controller remote from the biometric device. The central controller is responsive to a wireless transmission of the encoded reading, from the portable biometric device, for determining which one if any of the predesignated portals is to be unlocked.

**24 Claims, 4 Drawing Sheets**



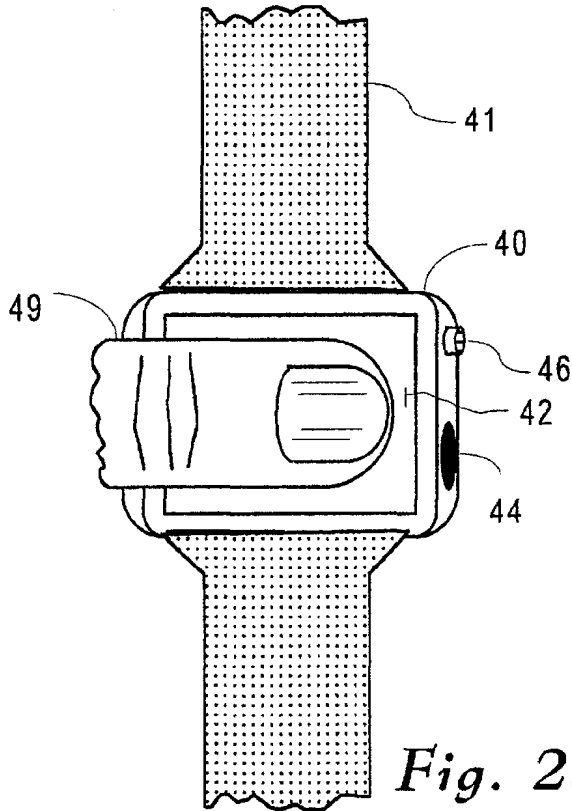


Fig. 2a

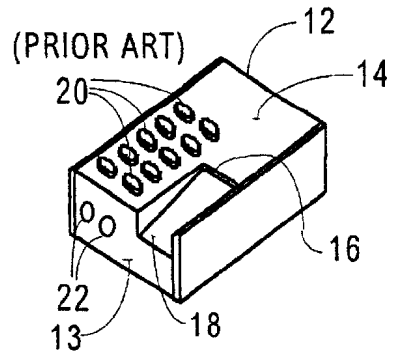


Fig. 1

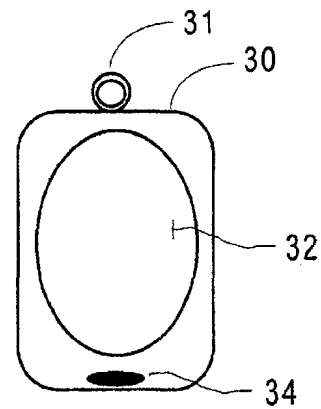


Fig. 2

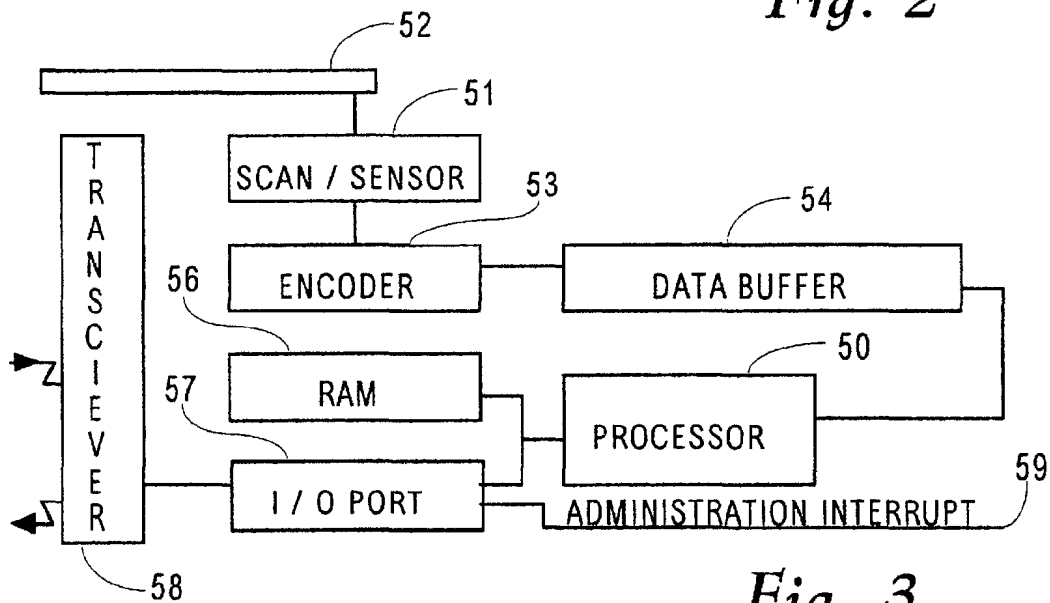


Fig. 3

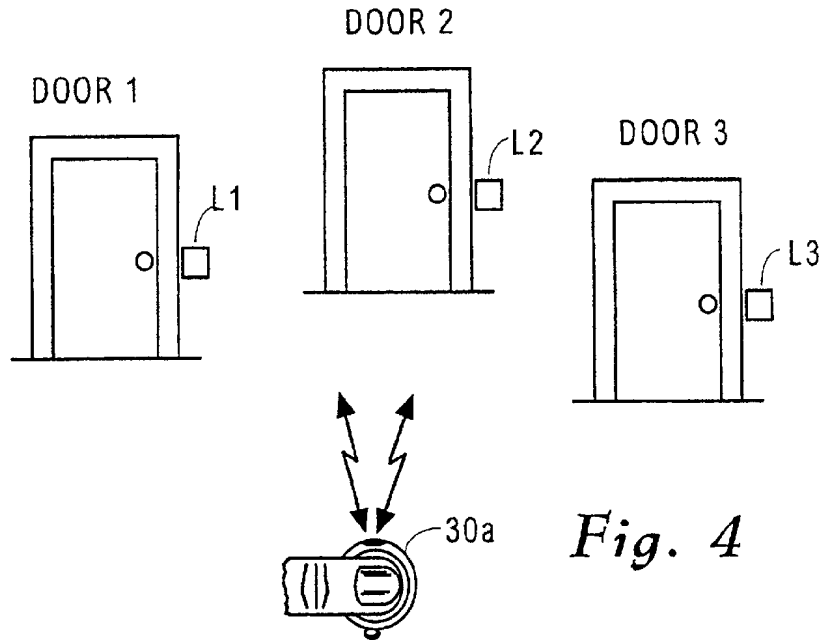


Fig. 4

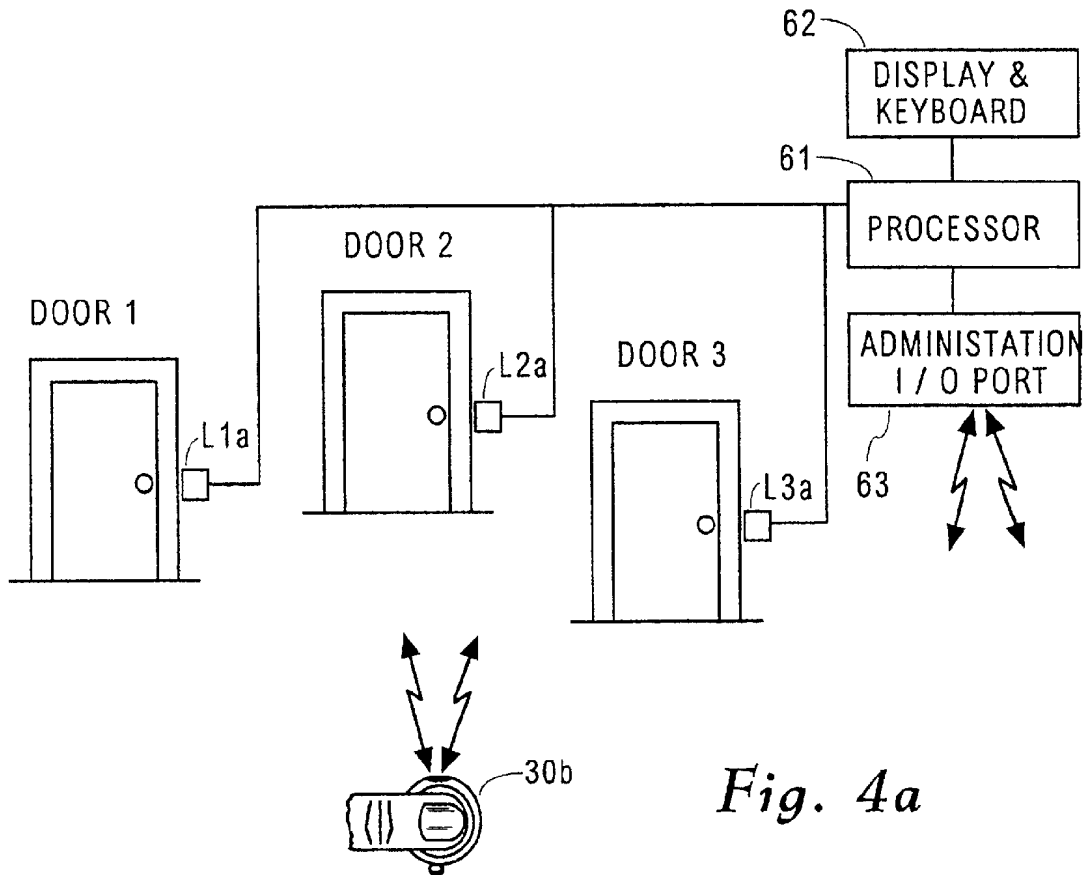


Fig. 4a

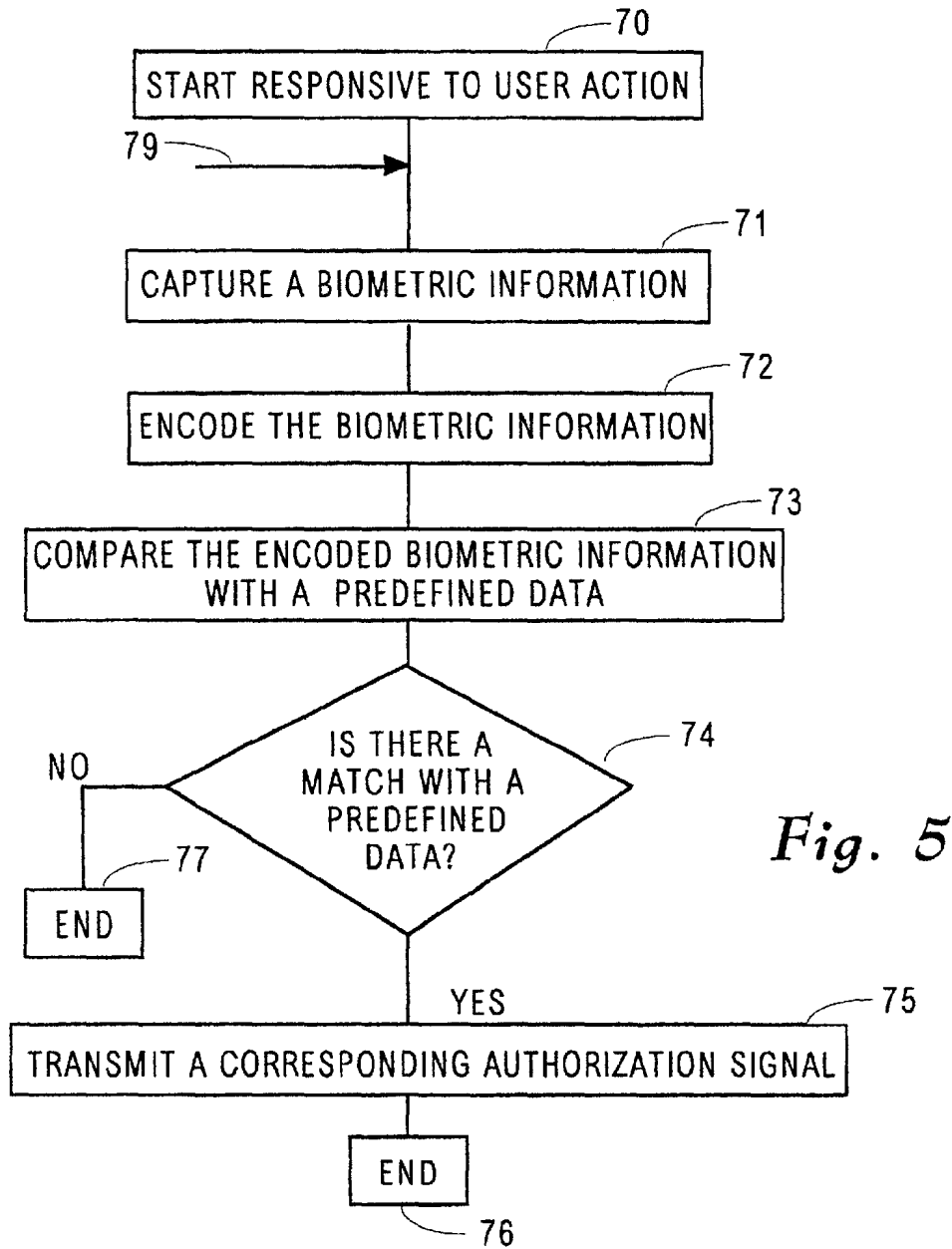


Fig. 5

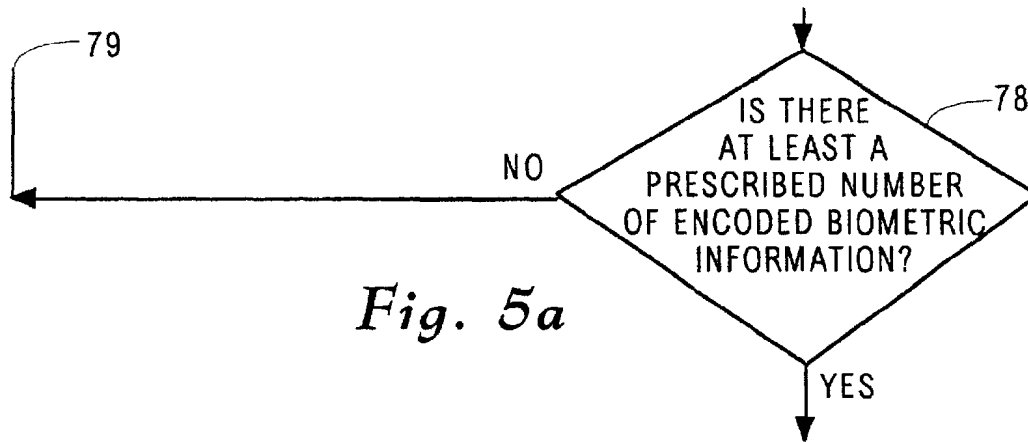


Fig. 5a

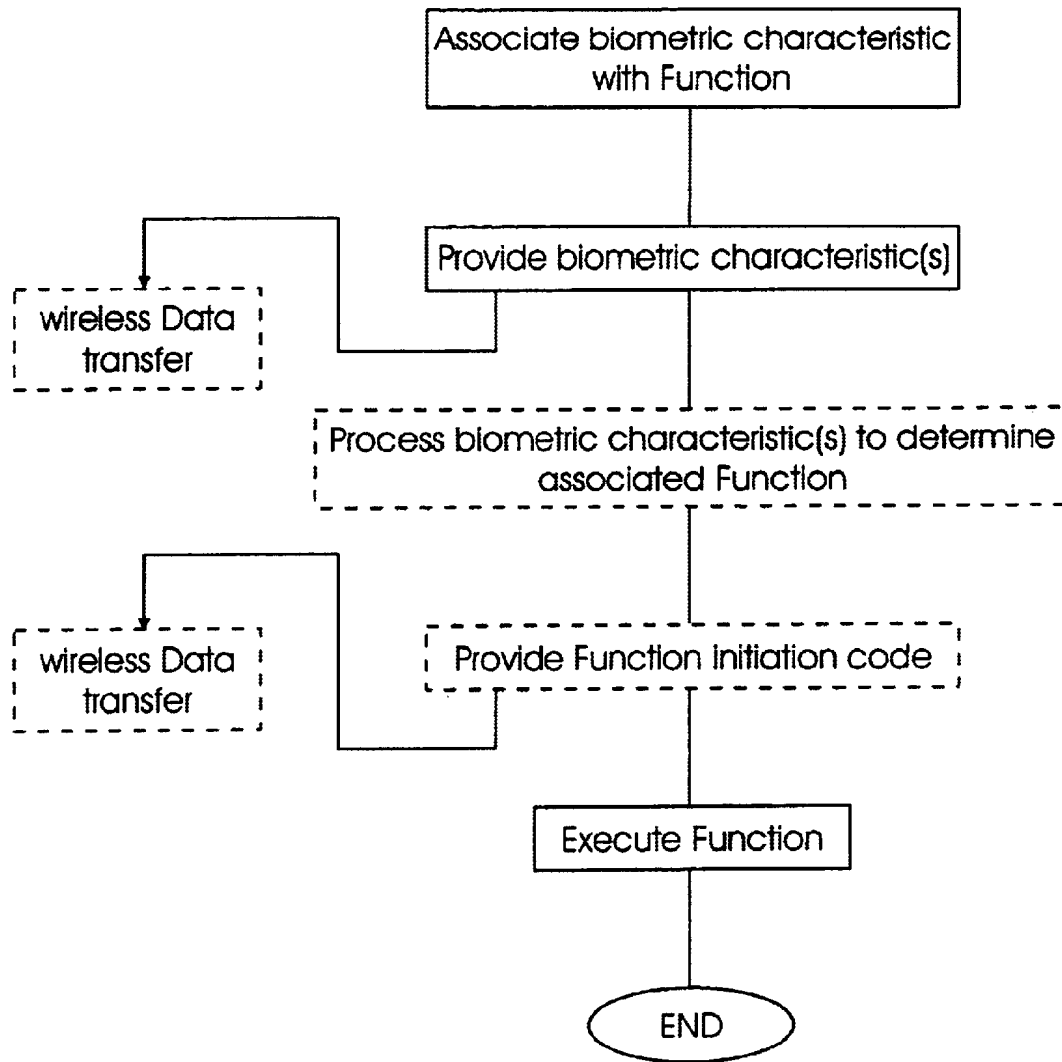


Fig. 6

# Explore Litigation Insights

Docket Alarm provides insights to develop a more informed litigation strategy and the peace of mind of knowing you're on top of things.

## Real-Time Litigation Alerts



Keep your litigation team up-to-date with **real-time alerts** and advanced team management tools built for the enterprise, all while greatly reducing PACER spend.

Our comprehensive service means we can handle Federal, State, and Administrative courts across the country.

## Advanced Docket Research



With over 230 million records, Docket Alarm's cloud-native docket research platform finds what other services can't. Coverage includes Federal, State, plus PTAB, TTAB, ITC and NLRB decisions, all in one place.

Identify arguments that have been successful in the past with full text, pinpoint searching. Link to case law cited within any court document via Fastcase.

## Analytics At Your Fingertips



Learn what happened the last time a particular judge, opposing counsel or company faced cases similar to yours.

Advanced out-of-the-box PTAB and TTAB analytics are always at your fingertips.

## API

Docket Alarm offers a powerful API (application programming interface) to developers that want to integrate case filings into their apps.

## LAW FIRMS

Build custom dashboards for your attorneys and clients with live data direct from the court.

Automate many repetitive legal tasks like conflict checks, document management, and marketing.

## FINANCIAL INSTITUTIONS

Litigation and bankruptcy checks for companies and debtors.

## E-DISCOVERY AND LEGAL VENDORS

Sync your system to PACER to automate legal marketing.