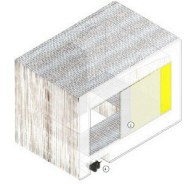
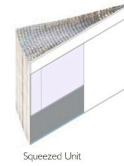
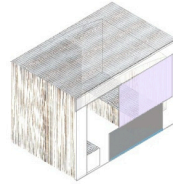
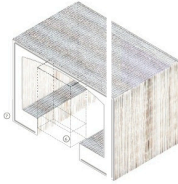
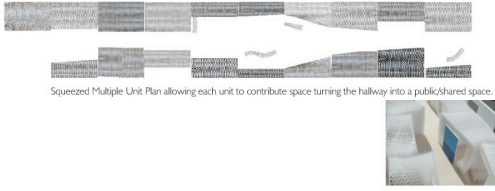
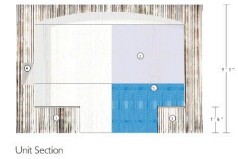
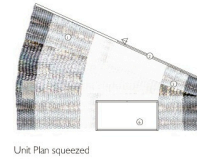
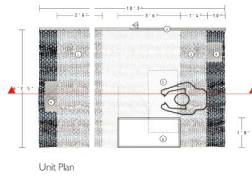
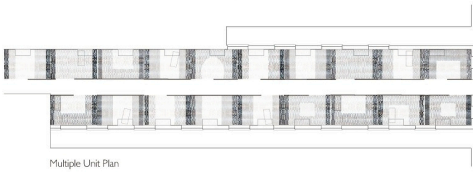


https://web.archive.org/web/20031106051417/http://www.commonground.org/org_info/media/press_releases/soft.jpg

First Step **Soft** Housing



- 1 Integral beech polyethylene fiber sheet in elastic honeycomb (Evo) matrix.
- 2 Sliding door within facing panel. (Home) rigid honeycomb panel.
- 3 Integral lounger (chair).
- 4 Niche storage areas which can be cut into honeycomb matrix within walls, under bed, and under lounger.
- 5 Pull out desk/table: birch or maple plywood.
- 6 Storage cabinet: birch or maple plywood.
- 7 (Kleber) fastenings attach unit to perimeter wall.

