

- [54] ENERGY CONSERVING INSULATIVE WINDOW SHADE
- [75] Inventor: John J. Anderson, Ramsey, N.J.
- [73] Assignee: Anmar Industries, Inc., Hackensack, N.J.
- [21] Appl. No.: 215,710
- [22] Filed: Dec. 12, 1980

3,443,860	5/1969	Luboshez	160/84 R
3,465,806	9/1969	Sulkes	160/84 R
3,725,981	4/1973	Pickney	24/127.3
3,887,739	6/1975	Kromrey	428/117
3,899,326	8/1975	Frost et al.	428/116

FOREIGN PATENT DOCUMENTS

6508988	1/1967	Netherlands	160/84 R
11493	of 1906	United Kingdom	160/84 R
756270	9/1956	United Kingdom	160/84 R

Related U.S. Application Data

- [63] Continuation-in-part of Ser. No. 879,356, Feb. 21, 1978.
- [51] Int. Cl.³ A47H 5/00
- [52] U.S. Cl. 160/84 R; 428/116; 160/5
- [58] Field of Search 160/84 R, 168, 172, 160/238, 266, 269, 271, 273, 5; 24/122.3, 122.6, 129 D, 143 R, 143 A; 428/73, 116, 117, 118

References Cited

U.S. PATENT DOCUMENTS

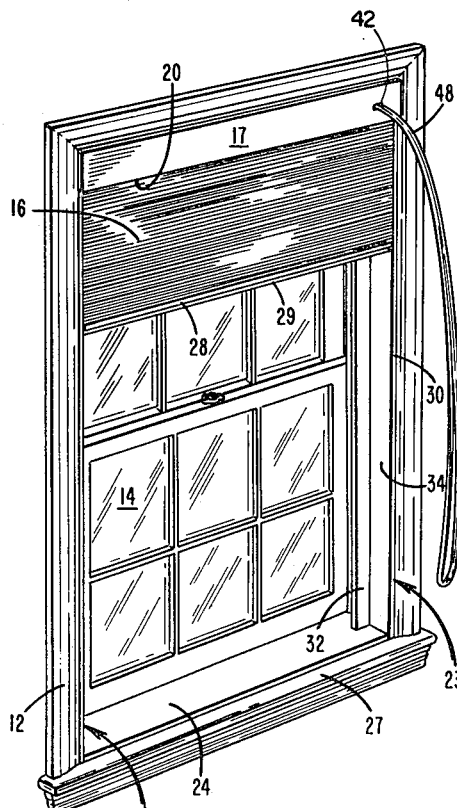
1,942,989	1/1934	Thomson	428/117
2,170,877	8/1939	Simon	160/271 X
2,477,852	8/1949	Bacon	428/116
2,548,041	4/1951	Morse	160/269 X
2,551,736	5/1951	Guarcello	160/172 X
2,869,205	1/1959	Kacowski	24/143 R
3,225,509	12/1965	May	428/118
3,231,006	1/1966	Fisher et al.	160/269 X
3,256,931	6/1966	Öjjerholm	160/84 R X
3,294,151	12/1966	Hartley et al.	160/5
3,294,152	12/1966	Kuitvenhover	160/5

Primary Examiner—Philip C. Kannan

[57] ABSTRACT

Window shade structure for reducing heat loss or heat gain through a window or other "thermal opening" wherein the shade body is drawable over the window and is collapsible into a reduced storage volume. The shade body comprises opposed walls of thin, sheet-like layers of flexible and resilient material joined together along spaced parallel adhesion lines to form a plurality of contiguous and parallel channels in the shade body. A strip-like sealing slat on the surfaces of the window frame which oppose the edge portions of the shade body, and a slot-like recess formed in the opposite edges of the shade body and extending the full length thereof receive the edge portions and portions of the lateral surfaces of the sealing slat, with the free edges of the sheet-like layers being flexed against the lateral surfaces of the sealing slat to insure against convective air flow and provide an effective convective seal.

22 Claims, 32 Drawing Figures



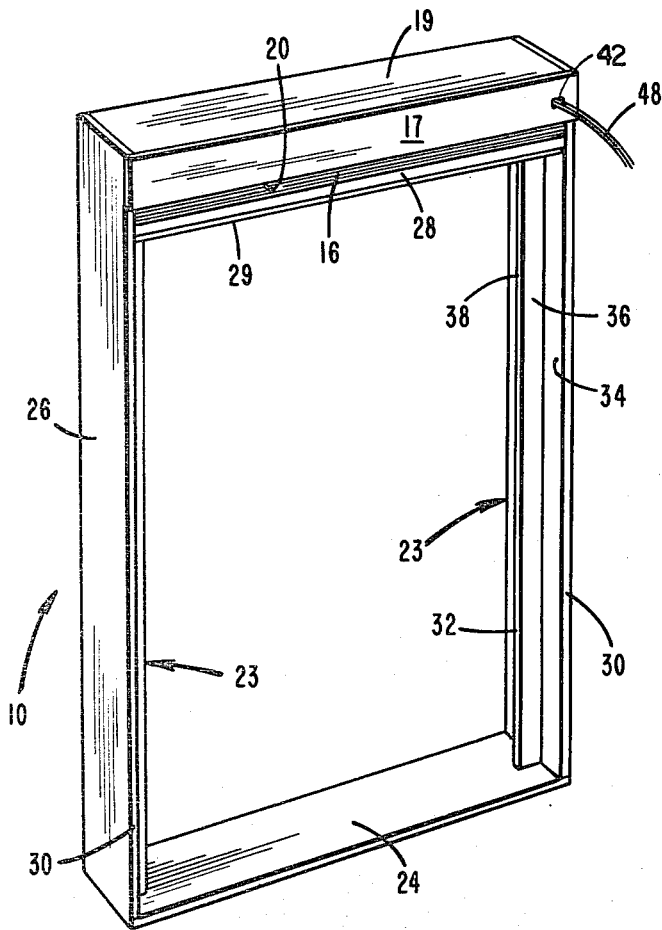


FIG. 4

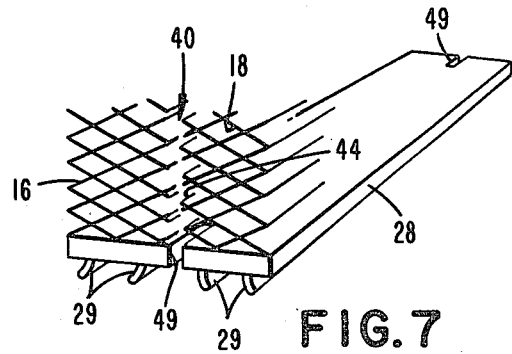


FIG. 7

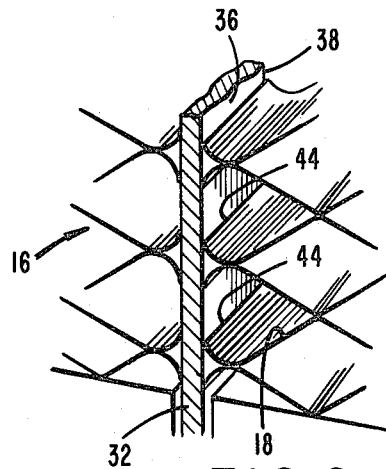


FIG. 6

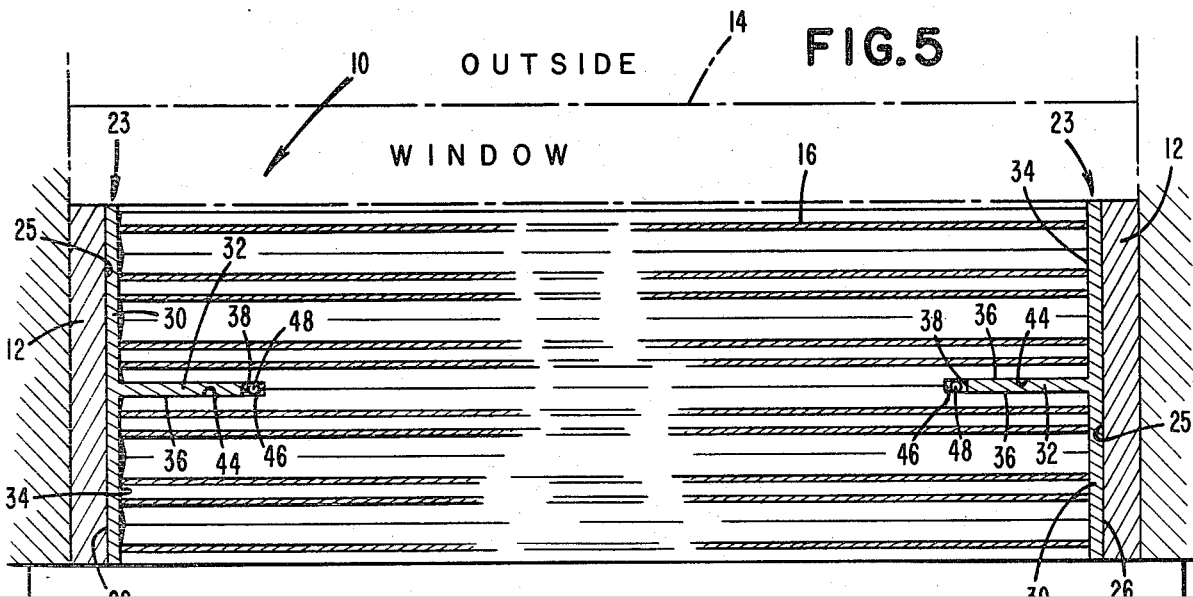


FIG. 5

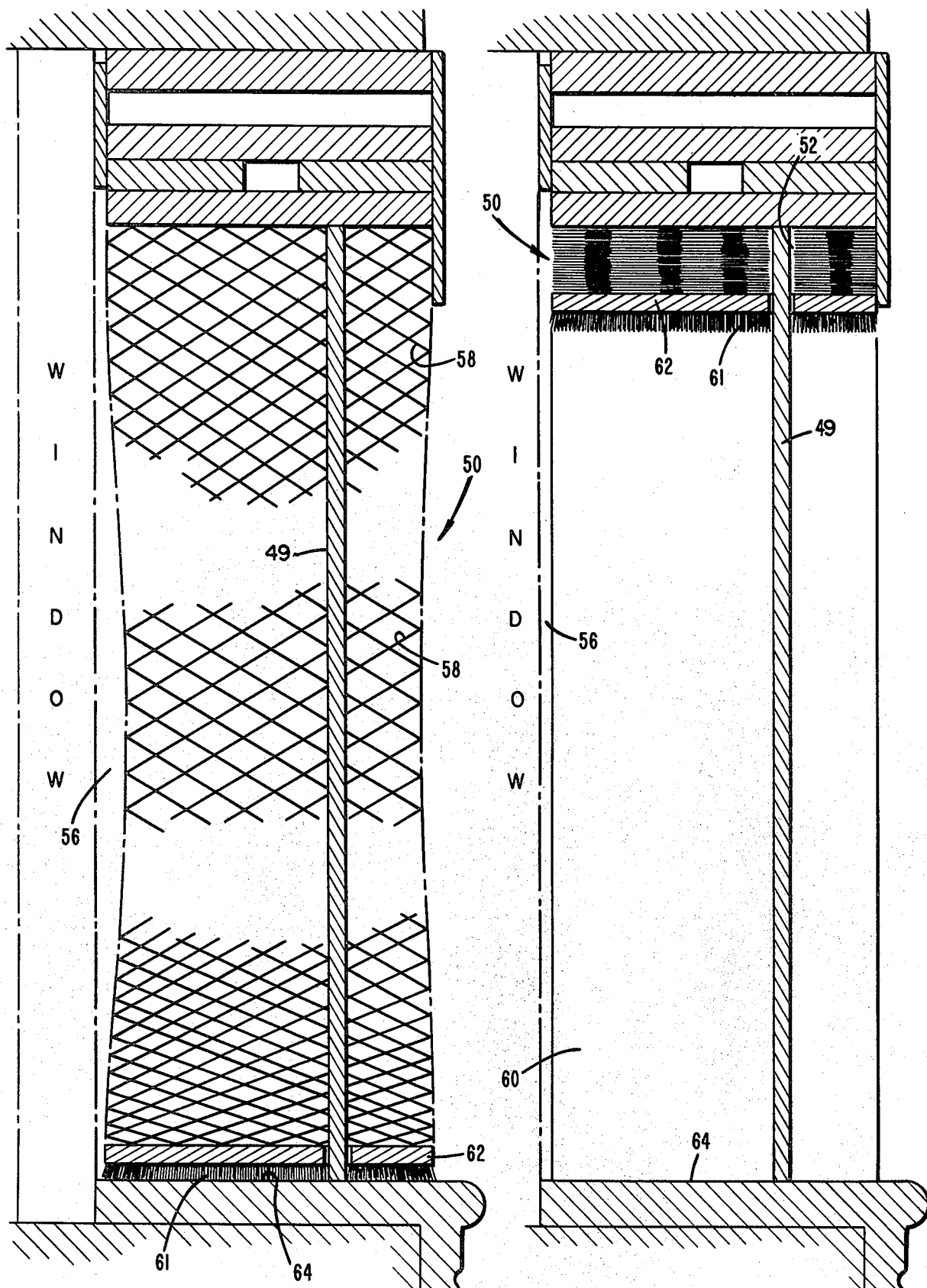


FIG. 9a

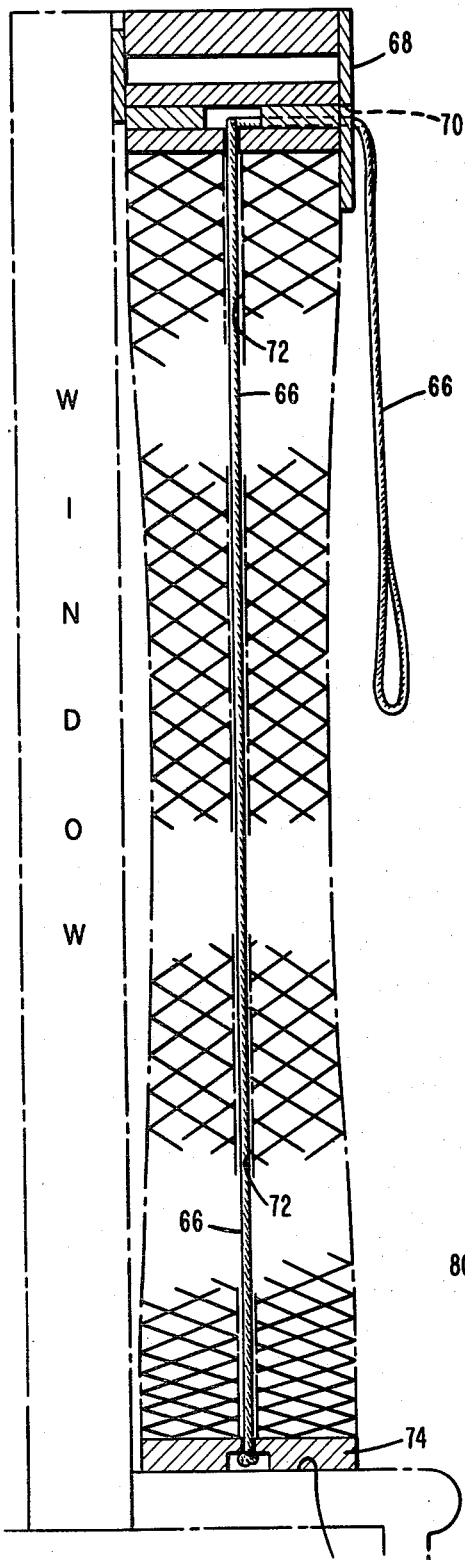


FIG. 9b

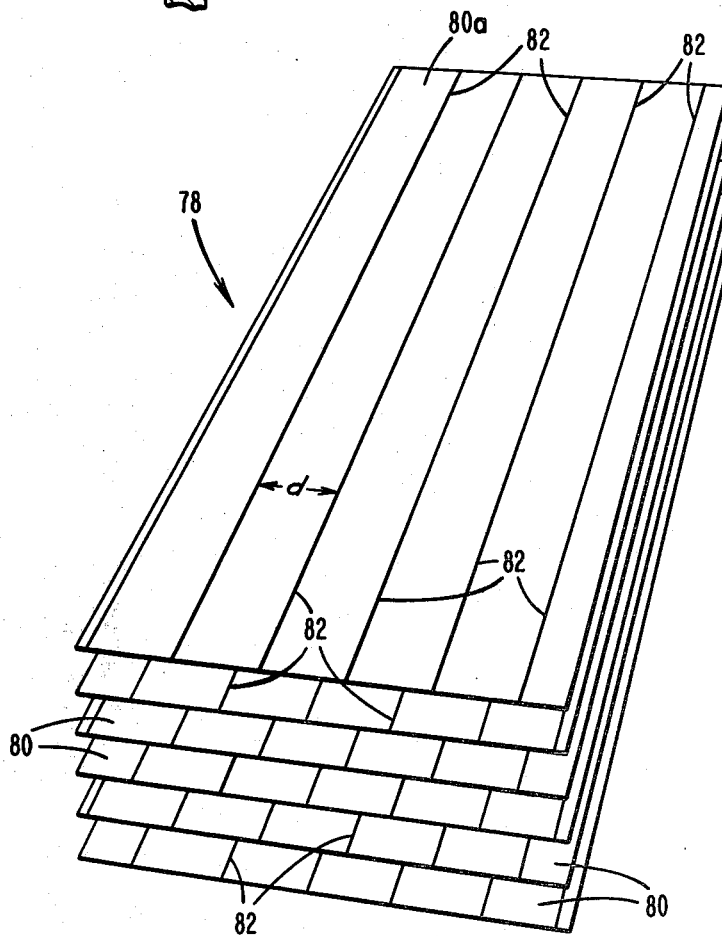
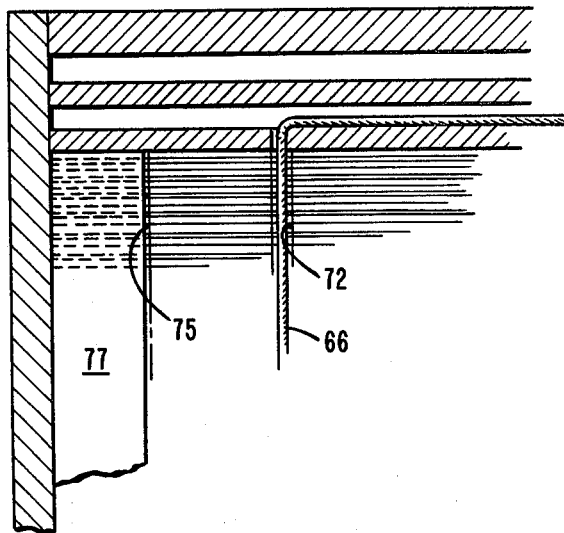


FIG. 10

Explore Litigation Insights

Docket Alarm provides insights to develop a more informed litigation strategy and the peace of mind of knowing you're on top of things.

Real-Time Litigation Alerts



Keep your litigation team up-to-date with **real-time alerts** and advanced team management tools built for the enterprise, all while greatly reducing PACER spend.

Our comprehensive service means we can handle Federal, State, and Administrative courts across the country.

Advanced Docket Research



With over 230 million records, Docket Alarm's cloud-native docket research platform finds what other services can't. Coverage includes Federal, State, plus PTAB, TTAB, ITC and NLRB decisions, all in one place.

Identify arguments that have been successful in the past with full text, pinpoint searching. Link to case law cited within any court document via Fastcase.

Analytics At Your Fingertips



Learn what happened the last time a particular judge, opposing counsel or company faced cases similar to yours.

Advanced out-of-the-box PTAB and TTAB analytics are always at your fingertips.

API

Docket Alarm offers a powerful API (application programming interface) to developers that want to integrate case filings into their apps.

LAW FIRMS

Build custom dashboards for your attorneys and clients with live data direct from the court.

Automate many repetitive legal tasks like conflict checks, document management, and marketing.

FINANCIAL INSTITUTIONS

Litigation and bankruptcy checks for companies and debtors.

E-DISCOVERY AND LEGAL VENDORS

Sync your system to PACER to automate legal marketing.