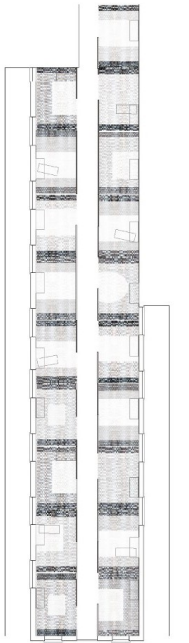
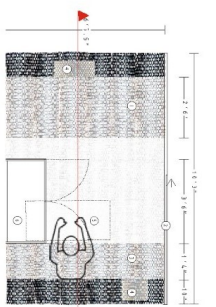


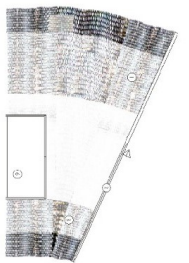
First Step **Soft** Housing



Multiple Unit Plan



Unit Plan

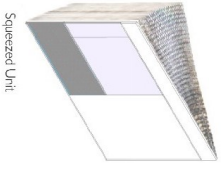
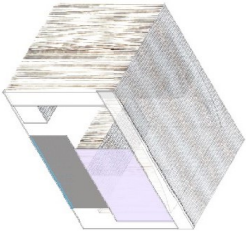
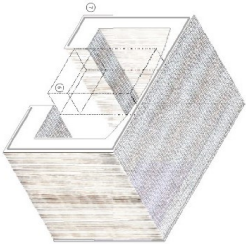
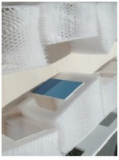


Unit Plan squeezed

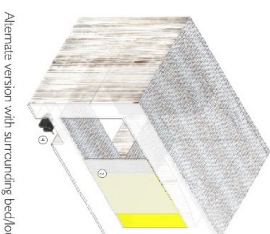


Unit Section

Squeezed Multiple Unit Plan allowing each unit to contribute space turning the hallway into a public/shared space.



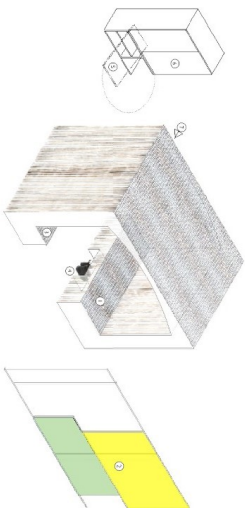
Squeezed Unit



Alternative version with surrounding bed/floor



- 1) Impact heat polystyrene base sheet + duct tape + wood panel
- 2) Sticky floor with high particle (Norelco) high temperature panel
- 3) Ingress of light & air
- 4) High strength and add surface high temperature marks when the material is under stress
- 5) Fall out reliable bed or night table
- 6) Storage cabinet (bed) or night table
- 7) (Color) Warning: Attach unit to perimeter wall



Full recording of transparent structure using clear paper



COMMON GROUND

505 Eighth Avenue, 15th Floor, New York, NY 10018

Contact: Deborah Samuelson
Director of Communications
dsamuelson@commonground.org
Tel: 212.389.9334
Fax: 212.389.9312

News Release

COMMON GROUND AND THE ARCHITECTURAL LEAGUE OF NEW YORK ANNOUNCE WINNERS OF OPEN DESIGN COMPETITION

180 Submitted Designs for "First Step Housing" Competition

Exhibition Featuring Entries and Winning Designs Opens November 12th

Design Jury included Michael Bell, Julie Eizenberg, Andrew Freear, Steven Holl and Toshiko Mori

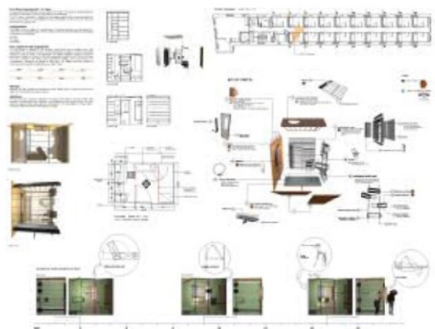
The winners of the First Step Housing Competition are:



"Soft House"
Forsythe + MacAllen Design, Vancouver
British Columbia
Stephanie Forsythe and Todd MacAllen



"Nesting"
Harvard Design School, Cambridge,
Massachusetts
Students David Gwinn, Basil Lee and Tom
McMahon



"Kit of Parts"
LifeForm, New York, New York
Rafi Elbaz, Nanna Wulping and Julia Tate