



STATE OF NEW YORK

)
)
)
)

COUNTY OF NEW YORK

ss

CERTIFICATION

I, the undersigned Edward Jacob, Project Manager for Divergent Language Solutions, LLC, hereby certify that the document, Design Beyond East & West - Collection of Winning Works of DBEW International Design Contest dated March, 2004 is to the best of my knowledge and belief a true and accurate translation from Chinese into English.

Edward J. Jacob
Divergent Language Solutions, LLC

State of New York

County of New York

Subscribed to and sworn before me this 31st day of January, 2022

by Edward J. Jacob.

Notary Public

MATTHEW C. ZELAK
NOTARY PUBLIC, STATE OF NEW YORK
Registration No. 01ZE6350239
Qualified in Kings County
Commission Expires November 7, 2024



183 Madison Avenue, Suite 416 | New York, NY 10016 | p 917.979.4513 | f 415.525.4313
600 California Street, 11th Floor | San Francisco, CA 94108 | p 415.400.4538 | f 415.525.4313

divergent@divergentls.com | www.divergentls.com

East

West

Design Beyond East & West — Collection of Winning Works of DBEW International Design Contest

Design Beyond East & West — Collection of Winning Works of DBEW International Design Competition

Edited by "Interior Architecture of China" magazine Zhuyu Communication Book Studio

TIANJIN UNIVERSITY PRESS

9 787302 022223

Design Beyond East & West
— Collection of Winning Works of DBEW
International Design Contest

DESIGN BEYOND EAST & WEST

Collection of Winning Works of
DBEW International Design Competition
Edited by "Interior Architecture of China" magazine · Zhiyu
Communication Book Studio

ISBN 7-309-04812-2
TIANJIN UNIVERSITY PRESS

Cataloging of Books in Publication (CIP) data

Design Beyond East & West—Collection of Winning Works of DBEW International Design Contest
/ Edited by "Interior Architecture of China" magazine Zhuyu
Communication Book Studio
—Tianjin: Tianjin University Press, 2004.3
ISBN 7-5618-1914-5

1. Super... II.①China...②Architecture... III. Architectural Design—Collection of Works—World IV. TU206

Chinese Version Library CIP Data Verification Number
(2004) 013335

Draft-organizing editor: Enchang Pang
Editors in charge: Enchang Pang, Yun Wang
Cover design: Xin Zhou
Layout design: Xin Zhou, Weiwei Yan
Technical design: Junwei You

Published and released by: Tianjin University Press
Publisher: Fenghe Yang
Address: Inside Tianjin University, No. 92, Weijin Road, Tianjin City
Tel: Issuing Department: 022-27403647
Mail order department: 022-27402742
Postal code: 300072
Printing: Beijing Fangjia Color Printing Co., Ltd.
Distribution: Xinhua Bookstores all over the country
Format: 285 mm × 285 mm
Unit of printing paper: 24
Word count: 840,000 words
Edition: 1st Edition, March 2004
Printing time: 1st printing in March 2004
Quantity printed: 1-4000
Pricing: \$330.00

Foreword

First of all, I would like to express my heartfelt thanks to "Interior Architecture of China" magazine for editing and compiling the materials of "Design Beyond East & West" — DBEW International Design Contest into a book.

Since the reform and opening up of China, the whole society has undergone tremendous changes, and all areas of social life are constantly developing and advancing. The fields of architecture, interior design, and home furnishing have also undergone tremendous changes. However, for a period of time, copying of western designs has become a trend, resulting in many designs that match western food culture and living spaces. People have to live in such spaces to "enjoy" interior designs that are not suitable for their own cultural background.

We all know that the living environment and food culture of the East and the West are very different, and the understanding of and feeling about life are also very different. Therefore, eastern society is not suitable for the direct introduction of western architecture, interior decoration, home furnishings and so on. We hold the DBEW international design contest to provide a platform for designers from all over the world to communicate, so that they can learn from foreign designs, pay attention to local culture, and truly design excellent works that meet the needs of their own lives.

HASSEM Furniture Co., Ltd. aims to serve the oriental people, and is committed to providing household products suitable for them. At the same time, it strives to promote design exchanges and development between the east and the west. Holding the DBEW international design contest is one aspect of this effort.

Beijing successfully won the right to host the 2008 Olympic Games and successfully won the right to host the 2010 Shanghai World Expo. It can be seen that China has become an object of the world's attention, and China is also taking steps to become the new center of the world. It is estimated that in the future the world economy will be centered on Asia, especially in Northeast Asia such as China, Japan, and South Korea, etc., which means that China and South Korea will have broader space for cooperation and development. Therefore, we hope to cooperate more closely with "Interior Architecture of China" magazine, so that we can make the DBEW international design contest better and better!

Yanghe Cui
President of HASSEM Furniture Company

Foreword

First, I'd like to express my gratitude to magazine Interior Architecture of China that has edited the materials of the international competition of Design Beyond East and West into a book.

Ever since the reform and opening to the outside world, China has seen a tremendous change, with diversified spheres of the society changed, in particular that of architecture, household design and home appliances. However, during a period of time in the past, the barely copy of that in the west had been in fashion, which resulted in the appearances of designs that suit the food style and living space of westerners; the Chinese had to stay there which were against their cultural background. As we all know, the living space and food culture between the west and east are totally different and so are the understanding and feeling towards life.

Therefore, it is noted that those in the west won't find their places in the eastern societies. The competition is aimed at offering a bed for designers from all over the world to present their perfect works for their own nationalities, while learning from others. HASSEM company, upholding the spirit of serving the east, has been engaged in providing home appliances for them and, at the same time, strives to promote the exchange and development between the east and west, such as holding DBEW International Competition.

Beijing's success in hosting the 2008 Olympic Game and that of Shanghai in bidding the 2010 Expo show that China has drawn the attention from all over the whole world, and China is also stepping forward the center of the world. It is forecast that the world economy will develop, by taking Asia, in particular China, Japan and Korea as centers, which means a broader cooperation and development space for China and Korea. Therefore, we hope to cooperate with the magazine more closely to make the competition better and better.

President of HASSEM Company

Foreword

Design Beyond East & West (DBEW) International Design Competition, sponsored by HASSEM Group, was launched firstly in 2001. As one of the worldwide activities, the competition highlighted novelty themes, sound run works and professional operation. The so-called "Design Beyond East & West, as far as I understand, demands the competitors to handle properly the balance of heritage and innovation; on basis of the understanding of the existing physical and cultural environment, to get acquainted with questions facing the people, to seek the directions, routes and measures with latest ideas and angles, for the purposes of guiding them in establishing ideal homes and leading a healthy life. All the participants in these competitions achieved remarkably, it should be mentioned as following:

The first, Competitors pay attention to the harmonious coexistence of human and nature, and the sustained development between the two, presenting diversified precedents of cycle, regeneration and utilization of natural sources. Such as the superlative reward winner in 2001. It cherished the integration of the external and internal space, creating an ecological environment at home where people enjoy a life as if in the embrace of the nature. Also take the gold reward won by Ben Andy in 2003. It highlighted the variety of houses among skyscrapers in cities, in terms of time and space. The house's components, which compose a space interface, can be dismantled or moved freely that diversify the space by means of size and shape. It is of longer service time, flexible structure and fewer costs. By applying high-tech means and strengthened materials, the house has a better automatic structure and the space interfaces can automatically open, close and readjust, where the free energy-sunlight and air-shines or flows sufficiently.

The second, The competitors pay more attention to the conditions of regional culture and material means, merging the factors in the east and west and home design, making modern designs carry the personality of traditional culture. All this resulted in a better living room for the people. For example the gold reward winner of Stephanie Forsythe in 2003. Instead of applying the traditional decoration means, he employed new materials, techniques and manners to build home space. The new one does not display any Japanese features, but the semi-transparent walls established a dreamy space which alternates virtually and really. The design reminds people the Japanese space which is made up of wood frames and semi-transparent paper. Still another

one is the superlative reward winner of 2+1 town house of 2003. The designer introduced the space ideas of Chinese traditional alley and courtyard house. By developing external and internal space for town house and mobile one for kid, it perfectly related the links among kids, parents and neighbors. It solved the problem of the only child to communicate with society, keeping them away from loneliness and helping build a healthy emotional world.

The third, The achievements in the modern world have been upgrading the technical contents of human life, facilitating the changes of family mix and living ways which result in the steep progress of home design accordingly. The rewarded works deserve the following three characteristics:

1. Along with the popularization of the Internet and the commonness of digital and intelligent devices at homes, the working space there is expanding and the private and public space is improving. 2. More attention is paid to the living space of kids. In order to satisfy them with physical and emotional gifts, designers concentrate on that of the net devices and furniture, for the better performance of constitution, personality and power of kids. 3. In some regions and countries, people like open kitchen where they meet during much of their home time. Its intelligent and cultural degrees are lifting, which has become the focus of home design and decoration. These are barely some of my feelings, which is likely incorrect. The overall ideas and perspective design deserve the comments from masses and what I said here is for casting a brick to attract jade.

The judging panel for the 2003 competition consisted of four who were from Italy, Korea, Japan and China each and I was among them. The rationality, fairness and scholarship of the competition deeply impressed me and it was also one of the significances of the competition.

The panel earnestly read the more than 300 works from 44 countries and the superlative and gold winners won the unanimous praises of them. The superlative reward work of the townhouse 2 +1 attracted them the most. Besides the above-mentioned features, it is perfect in energy effect, height balance, proper density and color match.

I was glad to know that the designer is Chinese. I believe that those who master the inside mix and development logics of Chinese culture, borrow that from abroad, so to get matured in the process of accumulation will make their preeminent contributions to the modern design.

ZHANG Shili
professor of the Academy of Arts and Design, Tsinghua University
President of CIID

Preamble

The International Interior Design Contest "Design Beyond East & West" hosted by HASSEM Group in South Korea has been successfully held three times from 2001 to 2003, and it is a high-level world interior design contest. The high level is mainly reflected in the theme of the contest design, the level of the entries of works and the very standardized operation. About the so-called design beyond the East and the West, my understanding is that the participants are asked to grasp the issues of inheritance and innovation, on the basis of the existing material and cultural environment of human beings, to understand the problems faced by the living environment of human beings today, and to seek to continue to improve the quality of human life in the direction, way and methods using new concepts and perspective, and to strive to guide people to establish an ideal home and a healthy lifestyle.

Looking at the winning works of the three contests, they all focus on the design theme of the contest, and carry out deep studies on related issues. The works reflect the design theme from different angles and have achieved gratifying results. I think they are mainly reflected in the following aspects:

1. Focus on the study of the harmonious coexistence of man and nature and the sustainable development of human society, and create examples of ecological resource recycling, regeneration and consumption-free energy utilization from different perspectives. For example, the design of the 2001 Grand Prize works pursues the integration of internal space and external space, and introduces the ecological environment into the interior, so that people can live in the natural environment. Another example is the 2003 Gold Prize work by Ben Andy, which is a residential design with time and space variables in a city with many buildings, wherein the spatial interface composed of components can be disassembled and displaced, and the composition space can vary in size and shape, which not only has a long service life and great flexibility, but also conforms to the principle of resource conservation. The application of high-tech means and high-strength materials has improved the automatic performance of the structure, and the direction of the space interface can be automatically opened, closed and adjusted, so that energy that is not consumed—sunlight and air, etc. can be fully utilized.

2. Pay attention to the study of regional culture and material conditions, integrate eastern and western architectural and interior design elements, incorporate the characteristics of traditional culture into modern design, and design a better living environment for human beings. For example: the design of the 2003 Gold Prize work by Stephanie abandoned the application of traditional decorative techniques, and used new materials, new technologies and new ways to create interior spaces. The new space form does not have the traditional Japanese design language, but the translucent space dividers constitute a space with virtual and real changes and with a dreamlike feeling, which is reminiscent of the Japanese interior space separated by the Japanese wooden frame and the translucent paper interface. Another example is the 2+1 plan of the townhouse of the Grand Prize work in 2003. The author introduced the space concept of traditional Chinese alleys and courtyards in the design, created the interior and exterior space of the connected house and mobile living space for children, obtained an ingenious connection between the children's space and the parents and the neighborhood space, solved the problem of the only child and social interaction, and tried to form an environment that avoids the loneliness of the only child, which is conducive to cultivating children's healthy spiritual world.

3. Today, the achievements of modern civilization in the world have promoted the improvement of scientific and technological content in people's living environment, and promoted the change of family structure and lifestyle. The interior design of residential buildings has developed greatly. The interior design of the award-winning works this time has three notable features: First, with the widespread use of the Internet, digital and intelligent facilities have entered the home, the space for work in the home has gradually expanded, and the private space and public activity space have become better and better. Second, more and more attention is paid to the design of children's living space. In order to meet the spiritual and material needs of children's growth, attention is paid to the careful design of audio-visual network facilities and furniture, and efforts are made to cultivate children's physique, personality and ability. Third, in some countries and regions, the family kitchen space is designed to be open, and it is a cultural square for family and friends to gather for dinner. Its intelligence level and cultural taste are getting higher and higher, and it has become the focus of residential interior design and decoration.

The above contents are only personal feelings, and there will be great limitations. The comprehensive design ideas and forward-looking significance shall be commented on by the readers themselves, and here I just want to initiate further considerations and comments.

In 2003, there were four judges in the "Design Beyond East & West" international interior design contest: One from Italy, one from South Korea, one from China and one from Japan. I was invited to participate in the review work as a China judge. I was deeply impressed by the normative, fair and academic nature of the review work, which is one aspect of the high level of the contest. The judges carefully interpreted more than 300 works from 44 countries around the world, and the works granted the Grand Prize and Gold Prize were unanimously complimented by the judges. The Grand Prize work of townhouse public housing 2+1 first attracted the attention of the judges. In addition to integrating Chinese traditional space design concepts with modern technology, and proposing to solve the needs of the life and social problems of the Chinese people, its townhouses are also excellent in terms of energy conservation, high and low building shapes, dense and loose arrangements in harmony, bright colors and other aspects in harmony with the environment. After the prizes were announced, I learned that the winner of the Grand Prize was Chinese. I was very excited and happy for the growth of young Chinese designers. I believe that Chinese designers who grasp the internal structure and development logic of China's own national culture and learn from the characteristics of foreign cultures will make outstanding contributions to the establishment of modern China design culture.

[signature: Shili Zhang]

Professor of Academy of Fine Arts, Tsinghua University
President of the Interior Design Branch of the Architectural Society of China

CONTENTS

Table of Contents

	2002 DBEW International Design Contest Introduction	4
Special Prize 13	2+1 Residential housing	13
Gold Prize 19	Component explosion "Soft" housing	19
Silver Prize 29	"Grass" house Material relationships and life Home gaming How to get close to the ground Lightweight housing for single-child families Limited housing Game housing Two-bedroom housing Inside and outside housing Plug-in housing	29 31 41 45 51 57 63 65 71 77 83 89
2003		
	Introduction of DBEW International Design Contest 2002	94
Special Prize 97	Nest housing	97
Gold Prize 103	Living spaces that promote change Dialogue between public and private spaces Built-in apartment units	103 109 115
Silver Prize 121	Inside and outside the home FLo home Time-based space The "new" apartments Complete homes Vertical spread Sustainable-deep living experiences Sustainable-deep living experiences and life Space economic efficient apartments Prefabricated housing New houses for mobile families	121 127 133 135 139 145 151 157 163 169 175 181
2002		
	Introduction of 2001 DBEW International Design Contest	190
Special Prize 193	"Hard" Living, "Soft" Housing	193
Gold Prize 199	Tools of life Bunker of the times About "Love" bedroom furniture	199 205 211
Silver Prize 215	Walls as entities Rotating dwelling engine Confusing system Variable housing Adaptive interior Adaptive housing Bright eyes Cloud house Family profile image Sustainable housing Modulo house Spiritual assasin	215 219 225 231 235 241 247 253 259 265 271 277
2001		

2003

Award: Gold Prize
Nationality: Canada
Type: Class B / Japanese style
Author: Stephanie Forsythe

“Soft” housing

Comments from the judges:

Mandini: The most distinctive aspect of this work is its interior design. Through free design techniques and transparent materials, the room becomes poetic and sensitive. At first glance, people will say this design work must be by a woman. In general, the room is full of a woman's flavor. Furniture, ceilings and floors are all highly variable. That is what makes this piece of work unique, you can change them according to the seasons and the time of day. The entire home exudes a cozy, dreamlike atmosphere. Actually, in reality it is difficult to actually build such a house, but with the help of some means it is still within the scope of constructability.

Shili Zhang: This work presents a new concept. It is a new space design that breaks the existing interior design concept. Through new materials and new processing techniques, the winner has achieved a novel design that allows for multiple divisions of the space. In the interior design mode of the work, you can adjust the space according to your own preferences, which can be large or small, to achieve a diverse space scale and flexible design. Occupants can freely arrange the space according to the changing seasons and needs. The materials used in the design are transparent and can be folded, compressed and resized.

If there is a ray of sunlight or lamp light shining in it, then the effect of the interior design is doubly better. It can generate an artistic atmosphere that can satisfy people's inner demands. Since the interior design also pursues privacy, I think it is more suitable for Japanese people, because Japanese people really like separate spaces, such as space enclosed by furniture. Considering the divisibility of its space and the concept of the

work, I think its interior design makes the Japanese prefer it. It's also very modern.

Seok-cheol Kim: Most of the interior designs displayed in the contest, or in other words, the works in the eight categories, are to determine the spatial layout of the house first, and then carry out the interior decoration. However, this work is different because it does not carry out any layout, but instead, it displays the interior design. The designer did not simply stop at the decoration of the given space, but went a step forward and created a new space in the given space. I like this point very much. In Japan, the traditional housing form consists of corridors forming a basic frame, and then uses transparent paper partitions to create private spaces. In this work, some of the atmosphere and culture produced by traditional construction methods are well displayed with modern technology. In category B, this work is a good representative of the contest's theme Design Beyond East & West, because it expands the role of interior design and fully demonstrates a truly Japanese-style space using modern new technologies.

Kazuyo Sejima: During this contest, we have three categories of works. I found that these three areas are reflected in this work. The material is like a curtain, but its use goes beyond three dimensions. Therefore, it acts as a partition that separates the rooms, and at the same time uses its elements to create a diverse interior environment. It can be understood in any way, the size of rooms can be changed and new spaces can be created.

Stephanie Forsythe

Soft Housing

Design Beyond East & West

The main idea of soft housing is to provide a flexible, inventive relationship between the open gathering space of the family and the private rooms for sleep, study, contemplation and play. The bedrooms/private rooms are soft, flexible honeycomb structures, each made from 500 layers of a light, strong white paper-like material (see report for description). This soft relationship allows for making the most of space, energy and material resources.



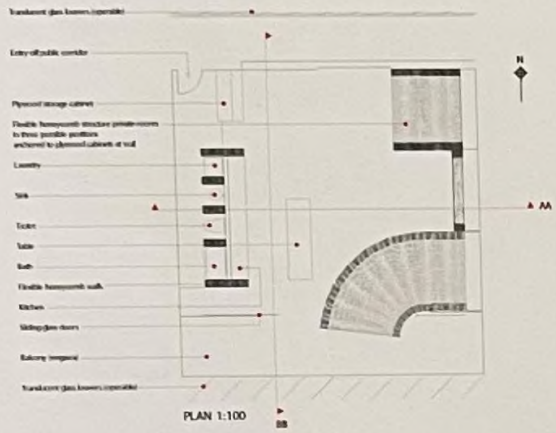
Explanation about the design

The main idea of "soft" housing is to provide a flexible and creative relationship between the family's open gathering spaces and private spaces for sleeping, study, contemplation and play. Bedrooms or private spaces are flexible and soft honeycomb structures, each made from 500 layers of light, strong, white paper-like material. These soft structures allow for making the most of space, energy and material resources. The pattern of light (from the sun and light fixtures) entering the interior space through the deep honeycomb ceiling is very similar to the light spots seen through a tree canopy. The tubular structure of the honeycomb acts as a field of small light pipes. Sunlight, bouncing off a light shelf on the facade, rakes across the top surface of the rooms, enters the honeycomb tubes, and is internally reflected and absorbed through the depth of ceiling and walls. The space is illuminated with an ever-shifting blend of sunspots from direct light and soft luminance reradiating from the 'paper-like' structure. It is interesting that the pattern of electric light falling through the honeycomb lattice subconsciously triggers a sense or memory of sunlight. We have hung replicas of these ceilings on a workbench in our studio and were pleasantly surprised by such a psychological effect. The multi-layered honeycomb walls are excellent for sound absorption, creating a private and tranquil sense of enclosure. Niches and alcoves built into the walls show their depth in the shadows. There is also an opportunity for LED or fluorescent lighting to be located within the thickness of the walls. Light from windows and lamps falls on the walls and is absorbed by multiple layers of material, creating a glowing effect similar to chunks of snow or ice. This adds another dimension to the perception of room interior space. We knew that we could not make the private rooms large but we can accomplish something more important, a quality of space and light that has life and a unique sense of private enclosure to inspire the creativity of a child with gentleness and infinite possibility.

Next is the family gathering space, the center of which is the kitchen. Complementing the private room, it is also very flexible in terms of space. Children or adults can shape the residential space in an organized or random manner. The same material is used for flexible partition walls; the bedrooms are located at either end of the kitchen, so the environment can be divided freely, or a sculptural wall can be pulled out to cover the kitchen work area, which allows the room to be compressed for use as a work space or to hide a messy kitchen for more formal dinner occasions in the house. The honeycomb partition wall allows each function, including laundry, sink, toiletry and bath, to have its own independent space with a sculptural effect. At night, the bedrooms are like giant carved paper lamps inside the main family space, especially when only the children's room is expanded and parents are winding down from their day, in the main space.

At the same time as this report was submitted, we carried out material testing using a full-scale model to probe the flame retardation properties of the white tissue paper (see the demo board). We wanted to emulate the softness of light, structure and space created with tissue paper, but with a more durable and easy-to-maintain material. Together with the manufacturer, we experimented with making honeycomb structures out of thin polyethylene fibers pressed into films. This material is lightweight, strong, smooth to the touch, low in flying particles, breathable, containing water and chemicals, and is resistant to punctures, abrasions and tears. The glossy, fine-fiber polyethylene film is translucent and has a texture very close to paper (see the detailed picture of the demo). It is made from recyclable materials and is 100% recyclable. The polyethylene sheets can be fire retardant treated to meet a flame spread of 20. A sample film is attached to this report.

We hope that this work contributes to the discussion and imagination of those participating in the "Design Beyond East & West" contest, and makes them find this design worthy of further study.



PLAN 1:100



EAST - WEST SECTION AA 1:100



NORTH - SOUTH SECTION BB 1:100



one bedroom expanded onto balcony



kitchen concealed with honeycomb wall



three bedrooms expanded

Plan views of model showing transformations in the space layout



Private Room Section scale 1:50



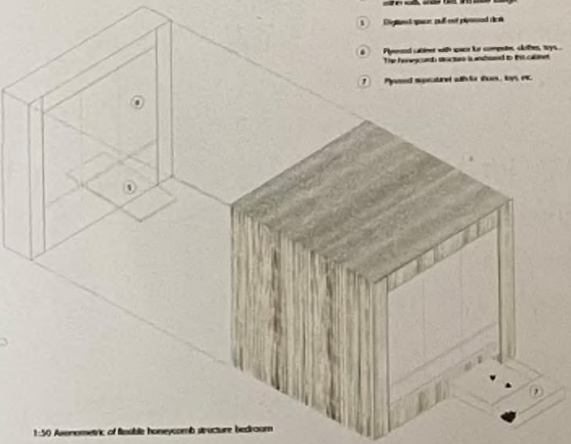
Private Room Plan scale 1:50



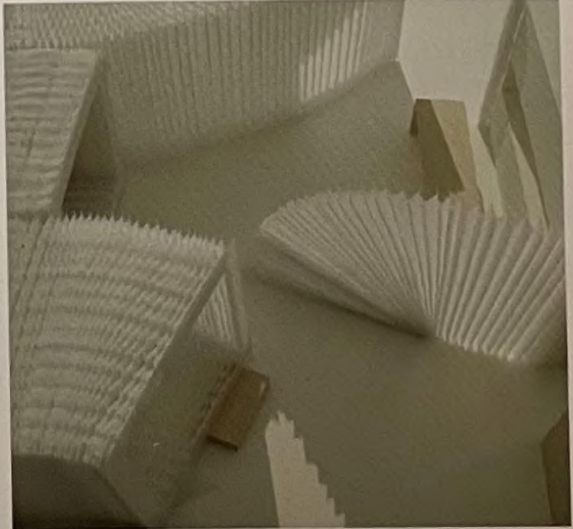
Unit Plan expanded scale 1:50

A Creative Environment
Children and Adults
play, learn, work, live

1. Integral bed, however the floor mattress rests on honeycomb structure
2. Facing panel of (flexible) rigid honeycomb with sliding bed structure
3. Integral storage (chair)
4. Kitchen and storage areas which can be cut into honeycomb system, either with, under, next, and under storage
5. Disposed space: still not planned desk
6. Plywood cabinet with space for computer, clothes, toys... The honeycomb structure is anchored to this cabinet
7. Plywood apparatus wall for shoes, toys, etc.



1:50 Isometrics of flexible honeycomb structure bedroom



bedrooms and partition walls can be opened freely in any direction



Blankets of honeycomb tissue being opened up into walls - full size material explorations



Light transmittance and soft touch
Water/stain resistant, air permeable
Recyclable



Integrating lighting/luminosity



Sound and light absorbed within cells



Shape memory



Resistance to tearing and puncture



Lightweight - less material for structure



Contracting



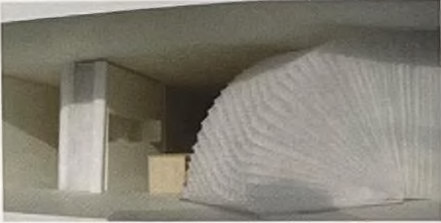
Expanding



Flexibility



Full-size mock-up of honeycomb structure using tissue paper



child's room latched open like a tent onto the balcony



view from inside bedroom



view of family gathering space with table, kitchen is covered with one of the honeycomb walls.

Editor in charge: Enchang Pang, Yun Wang
Cover design: Xin Zhou
Layout design: Xin Zhou, Weiwei Yan

East

Design Beyond East & West — Collection of Winning Works of DBEW International Design Contest

Design Beyond East & West — Collection of Winning Works of DBEW International Design Contest

This book is a collection of winning works of the previous "Design Beyond East & West" — Collection of Winning Works of DBEW International Design Contest", including all the winning works of previous contests. This is a high-level world interior design contest. The entries of works are completed by emerging designers from all over the world, showcasing the forward-looking, creative and practical aspects of contemporary design. Due to the different cultural backgrounds, growth experience and practical experience of the designers, the entries of works are colorful, showing the in-depth thinking of international young designers to solve practical problems while carrying forward the avant-garde spirit of interior design, which will give us multi-level and multi-angle inspiration.

West

ISBN 7-5618-1914-5



9 787561 819142 >

ISBN 7-5618-1914-5

Pricing: \$330.00 (The book comes with a CD-ROM.)



超越东西方的设计 — DBEW国际设计竞赛获奖作品集

Design Beyond East & West — Collection of Winning Works of DBEW International Design Competition

《中国建筑装饰装修》杂志·筑语传播图书工作室 编

天津大学出版社
TIANJIN UNIVERSITY PRESS

超越东西方的设计

——DBEW 国际设计竞赛获奖作品集

DESIGN BEYOND EAST & WEST

Collection of Winning Works of
DBEW International Design Competition

《中国建筑装饰装修》杂志 · 筑语传播图书工作室 编

天津大学出版社
TIANJIN UNIVERSITY PRESS

图书在版编目(CIP)数据

超越东西方的设计——DBEW国际设计竞赛获奖作品集 / 《中国建筑装饰装修》杂志, 筑语传播图书工作室编. —天津: 天津大学出版社, 2004.3
ISBN 7-5618-1914-5

I. 超… II. ①中…②筑… III. 建筑设计—作品集—世界 IV. TU206

中国版本图书馆 CIP 数据核字(2004)第 013335 号

组稿编辑: 庞恩昌
责任编辑: 庞恩昌 王 云
封面设计: 周 鑫
版式设计: 周 鑫 闫薇薇
技术设计: 油俊伟

出版发行: 天津大学出版社
出版人: 杨风和
地址: 天津市卫津路 92 号天津大学内
电话: 发行部 022-27403647
邮购部 022-27402742
邮编: 300072
印刷: 北京方嘉彩色印刷有限责任公司
经销: 全国各地新华书店
开本: 285mm × 285mm
印张: 24
字数: 840 千字
版次: 2004 年 3 月第 1 版
印次: 2004 年 3 月第 1 次
印数: 1-4000
定价: 330.00 元

前言

首先，本人衷心感谢《中国建筑装饰装修》杂志将“超越东西方的设计”——DBEW国际设计竞赛的资料编辑整理成书。

自中国改革开放以来，整个社会经历了巨大的变化，社会生活的各个领域都在不断地发展中前进。建筑、室内设计、家居等领域也发生了翻天覆地的变化。然而，在一段时期内，照搬西方的设计成为一种潮流，于是产生了许多多配合西方饮食文化及生活空间的设计，人们只好生活在此类空间中“享受”并不适合自己文化背景的室内设计。

我们都知道，东西方的居住环境与饮食文化大相径庭，对生活的理解和感受的差异也很大。因此，东方社会并不适合直接引进西方的建筑、室内装饰、家居等。我们举办DBEW国际设计竞赛，目的是为世界各地的设计师提供一个交流的平台，使其在学习借鉴外来设计的同时，关注本土文化，真正设计出适合本民族生活需要的优秀作品。

汉森家具公司以服务于东方人为宗旨，致力于提供适合东方人的家居产品，同时努力推动东西方的设计交流与发展，举办DBEW国际设计竞赛就是这种努力的一个方面。

北京成功获得2008年奥运会举办权及2010年上海世博会申办成功，可知中国已经成为全世界所关注的对象，而中国也正在迈出成为世界新中心的步伐。估计今后世界经济将以亚洲为中心，尤其以中、日、韩等东北亚地区为中心发展，那将意味着中韩两国有更广泛的合作发展空间。因此，我们希望能与《中国建筑装饰装修》杂志更加紧密地合作，以便我们能把DBEW国际设计竞赛越办越好！

崔杨河

HASSEM家具公司总裁

Foreword

First, I'd like to express my gratitude to magazine Interior Architecture of China that has edited the materials of the international competition of Design Beyond East and West into a book.

Ever since the reform and opening to the outside world, China has seen a tremendous change, with diversified spheres of the society changed, in particular that of architecture, household design and home appliances. However, during a period of time in the past, the barely copy of that in the west had been in fashion, which resulted in the appearances of designs that suit the food style and living space of westerners; the Chinese had to stay there which were against their cultural background. As we all know, the living space and food culture between the west and east are totally different and so are the understanding and feeling towards life.

Therefore, it is noted that those in the west won't find their places in the eastern societies. The competition is aimed at offering a bed for designers from all over the world to present their perfect works for their own nationalities, while learning from others. HASSEM company, upholding the spirit of serving the east, has been engaged in providing home appliances for them and, at the same time, strives to promote the exchange and development between the east and west, such as holding DBEW International Competition.

Beijing's success in hosting the 2008 Olympic Game and that of Shanghai in bidding the 2010 Expo show that China has drawn the attention from all over the whole world, and China is also stepping forward the center of the world. It is forecast that the world economy will develop, by taking Asia, in particular China, Japan and Korea as centers, which means a broader cooperation and development space for China and Korea. Therefore, we hope to cooperate with the magazine more closely to make the competition better and better.

President of HASSEM Company

Foreword

Design Beyond East & West (DBEW) International Design Competition, sponsored by HASSEM Group, was launched firstly in 2001. As one of the worldwide activities, the competition highlighted novelty themes, sound run works and professional operation. The so-called "Design Beyond East & West, as far as I understand, demands the competitors to handle properly the balance of heritage and innovation; on basis of the understanding of the existing physical and cultural environment, to get acquainted with questions facing the people, to seek the directions, routes and measures with latest ideas and angles, for the purposes of guiding them in establishing ideal homes and leading a healthy life. All the participants in three competitions achieved remarkably. It should be mentioned as following:

The first, Competitors pay attention to the harmonious coexistence of human and nature, and the sustained development between the two, presenting diversified precedents of cycle, regeneration and utilization of natural sources. Such as the superfine reward winner in 2001. It cherished the integration of the external and internal space, creating an ecological environment at home where people enjoy a life as if in the embrace of the nature. Also take the gold reward won by Ben Andy in 2003. It highlighted the variety of houses among skyscrapers in cities, in terms of time and space. The house's components, which compose a space interface, can be dismantled or moved freely that diversify the space by means of size and shape. It is of longer service time, flexible structure and fewer costs. By applying high-tech means and strengthened materials, the house has a better automatic structure and the space interfaces can automatically open, close and readjust, where the free energy--sunlight and air--shines or flows sufficiently.

The second, The competitors pay more attention to the conditions of regional culture and material means, merging the factors in the east and west and home design, making modern designs carry the personality of traditional culture. All this resulted in a better living room for the people. For example the gold reward winner of Stephanie Forsythe in 2003. Instead of applying the traditional decoration means, he employed new materials, techniques and manners to build home space. The new one does not display any Japanese features, but the semi-transparent walls established a dreamy space which alternates virtually and really. The design reminds people the Japanese space which is made up of wood frames and semi-transparent paper. Still another

one is the superfine reward winner of 2+1 town house of 2003. The designer introduced the space ideas of Chinese traditional alley and courtyard house. By developing external and internal space for town house and mobile one for kid, it perfectly related the links among kids, parents and neighbors. It solved the problem of the only child to communicate with society, keeping them away from loneliness and helping build a healthy emotional world.

The third, The achievements in the modern world have been upgrading the technical contents of human life, facilitating the changes of family mix and living ways which result in the steep progress of home design accordingly. The rewarded works deserve the following three characteristics:

1. Along with the popularization of the Internet and the commonness of digital and intelligent devices at homes, the working space there is expanding and the private and public space is improving. 2. More attention is paid to the living space of kids. In order to satisfy them with physical and emotional gifts, designers concentrate on that of the net devices and furniture, for the better performance of constitution, personality and power of kids. 3. In some regions and countries, people like open kitchen where they meet during much of their home time. Its intelligent and cultural degrees are lifting, which has become the focus of home design and decoration. These are barely some of my feelings, which is likely incorrect. The overall ideas and perspective design deserve the comments from masses and what I said here is for casting a brick to attract jade.

The judging panel for the 2003 competition consisted of four who were from Italy, Korea, Japan and China each and I was among them. The rationality, fairness and scholarship of the competition deeply impressed me and it was also one of the significances of the competition.

The panel earnestly read the more than 300 works from 44 countries and the superfine and gold winners won the unanimous praises of them. The superfine reward work of the townhouse 2 +1 attracted them the most. Besides the above-mentioned features, it is perfect in energy effect, height balance, proper density and color match.

I was glad to know that the designer is Chinese. I believe that those who, master the inside mix and development logics of Chinese culture, borrow that from abroad, so to get matured in the process of accumulation will make their preeminent contributions to the modern design.

ZHANG Shili

professor of the Academy of Arts and Design, Tsinghua University
President of CIID

序言

韩国汉森集团主办的《超越东西方的设计》国际室内设计大赛2001~2003年已成功地举办了三次，是世界上高水平的室内设计大赛。高水平主要体现在竞赛设计主题、参赛作品的水平以及十分规范的运作上。所谓超越东西方的设计，我体会就是要求参赛者把握好继承与创新的问题，在人类已有的物质环境和文化环境的基础上，认识当今人类生活环境面临的问题，以全新的观念和视角寻求继续提高人类生活质量的方向、途径和方法，努力引导人们建立理想的家园和健康的生活方式。

综观三次大赛的获奖作品，都围绕大赛的设计主题，展开相关问题的研究，作品从不同的角度反映设计的主题，取得了可喜的成绩，我认为主要表现在以下方面：

一、注重人与自然和谐共存以及人类社会可持续发展的研究，从不同角度创造生态资源循环、再生和无消耗能源利用的范例。例如：2001年特等奖作品设计追求内部空间与外部空间融合，把生态环境引入室内，使人生活在自然环抱之中。又例如2003年本·埃迪的金奖作品是在楼宇林立的城市之中具有时间上、空间上变数的住宅设计，由一个个构件组成的空间界面可以拆卸移位，构成空间可以有大小及不同形态的变化，不仅使用寿命长、灵活性大，而且符合资源节约的原则。高科技手段及高强材料的应用，使结构自动化性能提高，空间界面可以自动开敞、关闭和调节方向，使无消耗的能源——阳光以及空气等能够得到充分利用。

二、注重地域文化及物质条件的研究，融合东西方建筑及室内设计元素，把传统文化的特质蕴含于现代设计之中，设计出人类更加美好的生活环境。例如：2003年斯蒂芬尼金奖作品的设计抛弃了传统装饰手法的应用，利用新材料、新技术、新方式创造室内空间。新的空间形态没有日本传统的设计语言，但是半透明的空间间隔体构成虚实变化、具有梦幻般感觉的空间，令人联想起日本木框架糊半透明纸界面分隔的日式室内空间。又例如2003年特等奖作品连排住宅2+1方案，作者在设计中引入中国传统巷子和四合院的空间理念，创造了连排住宅的内外空间和移动式的儿童生活空间，取得儿童空间与父母、邻里空间的巧妙联系，解决了独生子与社会交往的问题，力图形成避免独生子女孤独感的环境，有利于培养孩子健康的精神世界。

三、今天世界现代文明成果促进了人们生活环境中科技含量的提高，促进家庭结构和生活方式的变化，住宅室内设计已有很大的发展，这次获奖作品的室内设计有三个显著特点：其一，随着网络的广泛使用，数字化、智能化设施进入家庭，家庭中从事工作的空间逐渐扩大，私密空间和公共活动空间越来越完善。其二，对子女生活空间的设计越来越重视，为了满足子女成长精神上物质上的需要，注重视听网络设施及家具的精心设计，着力培养子女体质、个性、能力。其三，在有些国家和地区，家庭厨房空间设计开敞，是亲友聚餐的文化广场，其智能化水平和文化品位越来越高，成为住宅室内设计、装修的重点。

上述内容仅是个人的感受，会有很大的局限性，全面的设计思想和前瞻性的意义广大读者自有评述，这里只是抛砖引玉吧。

2003年《超越东西方的设计》国际室内设计大赛评委共四位：意大利、韩国、中国、日本各一位，我应邀作为中国评委参加评审工作。这次评审工作的规范性、公正性、学术性给我很深的印象，这是大赛高水平的一个方面。评委们对来自世界44个国家300多件作品进行了认真的解读，特等奖和金奖作品获得了评委们的一致认可。特等奖作品连排公共住宅2+1首先吸引评委的注意，它除了结合现代科技引入中国传统空间设计理念，提出了解决中国大众生活需要和社会问题以外，其连排住宅在节约能源、建筑形体高低错落、疏密有致、色彩鲜亮等方面与环境协调方面也是优秀的。奖项揭晓后得知特等奖得主是中国人，我十分兴奋，为中国青年设计师的成长而高兴。我相信把握自己民族文化的内在结构和发展逻辑，并借鉴外来文化特质，从而在自己文化积累过程中成熟起来的中国设计师会为建树中国现代设计文化做出杰出的贡献。



清华大学美术学院教授
中国建筑学会室内设计分会会长

CONTENTS

目录

2003

	4	2003年DBEW国际设计竞赛介绍
	>	
特奖 13	13	2 + 1 住宅
	>	
金奖 19	19	构件爆炸
	25	"软"住宅
	>	
银奖 29	29	"草"住宅
	35	摆动的住宅
	41	材料·关系·生活
	45	家庭游戏
	51	如何靠近地面
	57	独子家庭可能的住宅
	63	无限住宅
	65	游戏住宅
	71	二居室住宅
	77	内外住宅
	83	垂直纸面
	89	插件式住宅

2002

	94	2002年DBEW国际设计竞赛介绍
	>	
特奖 97	97	巢式住宅
	>	
金奖 103	103	促进变化的生活空间
	109	公共空间和私密空间的平衡
	115	嵌入式公寓单元
	>	
银奖 121	121	内外之家
	127	FLÖ 之家
	133	基于时间的空间
	139	"环"系统之家
	145	完全之家
	151	垂直蔓延
	157	可持续的深度生活经验
	163	适应自然和生活的小型文化广场
	169	空间经济的公寓
	175	组装式住宅
	181	为流动家庭而建的新住宅

2001

	190	2001年DBEW国际设计竞赛介绍
	>	
特奖 193	193	"硬"生活,"软"家庭
	>	
金奖 199	199	生活的工具
	205	时代的掩体
	211	关于"爱"的卧室家具
	>	
银奖 215	215	画布为墙
	219	旋转的居住发动机
	225	易于迷惑的系统
	231	可变住宅
	235	常开之门
	241	适应性住宅
	247	秋波
	253	云之宅
	259	家庭侧面像
	265	甜蜜的婚礼
	271	模数之家
	277	精神刺客

2003

奖项：金奖
国籍：加拿大
种类：B类 / 日本风格
作者：Stephanie Forsythe

“软”住宅

评委评述

曼迪尼：本作品最与众不同的地方在于它的室内设计。通过自由的设计手法和透明的材料，房间变得诗意而敏感。人们一看就会说这一定是女人的设计作品。总的说，房间充满了女人的气息。家具、天花板以及地板的可变性都非常强。这就是使该作品与众不同的地方：你可以根据季节和每天时间的变化改变他们。整个住宅散发着惬意、梦幻般的气氛。实际上，在现实中很难真正建造这样一个住宅，但是在一些手段的帮助下它仍然是在可建造范围之内。

张世礼：该作品展示了一个新概念。它是一个打破了现有内部设计概念的新空间设计。通过新材料和新的处理技术，获奖者实现了一个允许对空间进行多种分隔的新颖设计。在作品的内部设计模式中，你可以根据自己的爱好来调整空间，可大可小，来实现一个多样化的空间尺度和灵活的设计。居住者可以根据季节和需要的变化来自由地安排空间。设计中内部运用的材料是透明的，而且可以进行折叠、压缩、调整尺寸。

如果有一束阳光或者灯光照射，那么内部设计的效果就加倍地好了。它可以产生能够满足人们心里的艺术氛围。由于内部设计同样追求私密性，我认为它更适合日本人，因为他们非常喜欢独立的空间，比如通过家具围合的空间。考虑到其空间的可分割性和作品的

概念，我认为它的内部设计让日本人更喜欢。它也非常现代。

金锡澈：竞赛展示出来的大部分的内部设计，或者说B类中的作品，都是先决定住宅的空间布局，再进行内部装修。然而，这个作品却不一样，因为它没有进行任何的布局，而是代之以内部设计的展示。设计者没有简单地停留在对给定空间的装修上，而是前进一步，在给定的空间中来创造一个新空间。我非常喜欢这一点。在日本，传统的住宅形式是由走廊构成一个基本框架，再由透明的纸隔断来制造私密空间。在这个作品中，一些由传统建造方法所产生的气氛和文化用现代的技术得到了很好的展示。在B类中，本作品是此次竞赛主题超越东西方设计的很好代表，因为它扩展了内部设计的作用并且充分展示了一个运用现代新技术的真正日本风格的空间。

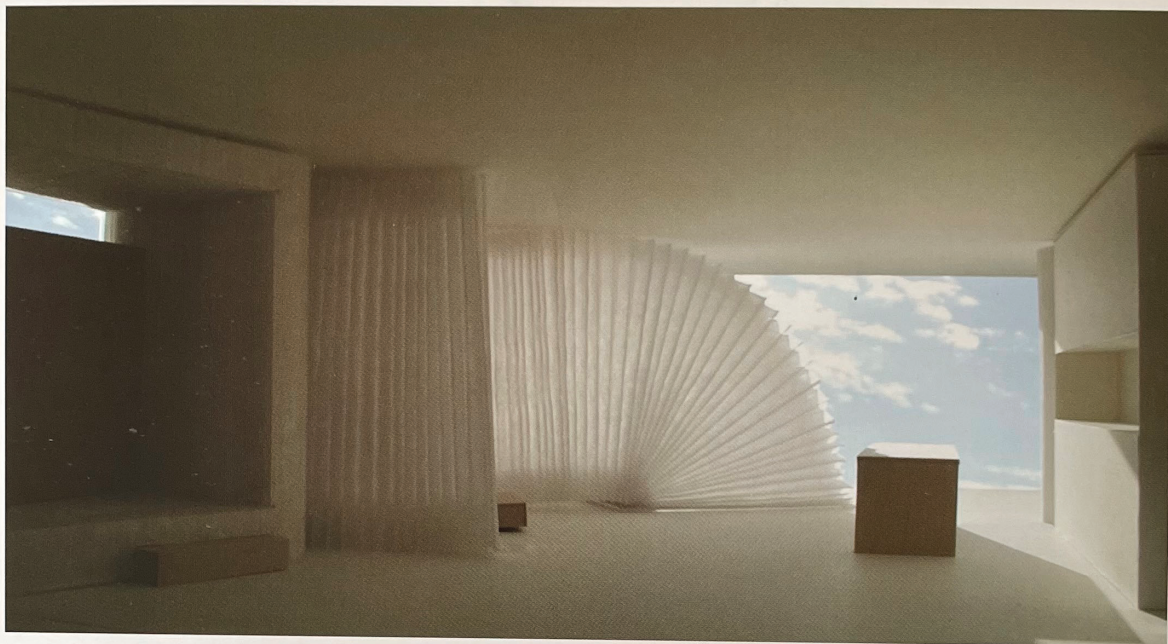
妹岛和世：此次竞赛，我们有三类作品。我发现，这三个领域在本作品中都有体现。材料像是一个窗帘，但是它的运用超越了三维。因此，它作为分隔房间的隔断，同时又运用它的元素，来创造一个多样化的内部环境。它可以以任何方式理解，房间的大小可以改变，新的空间也可以创造。

Stephanie Forsythe

Soft Housing

Design Beyond East & West

The main idea of soft housing is to provide a flexible, inventive relationship between the open gathering space of the family and the private rooms for sleep, study, contemplation and play. The bedrooms/private rooms are soft, flexible honeycomb structures, each made from 500 layers of a light, strong, white paper like material (see report for description). This soft relationship allows for making the most of space, energy and material resources.



设计说明

“软”住宅的主要理念是在家庭开放聚集空间和供睡觉、学习、沉思和游戏等私人空间之间提供灵活的和富有创造性的关系。卧室或私人空间是柔性灵活的蜂巢结构，每一个蜂巢是利用500层轻的、强韧的、白色的纸状材料制成。这些柔性结构可用作绝大部分空间、能源和材料的来源。

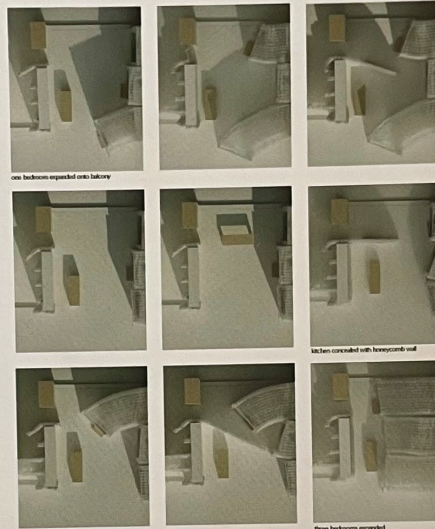
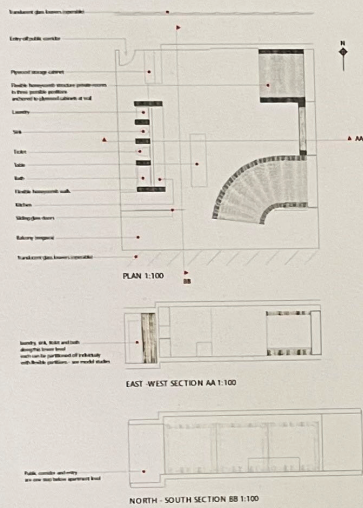
通过深深的蜂巢天花板射入内部空间的光（来自太阳和灯具）形成的图案与透过树冠的光斑非常相似。蜂巢的管状结构充当了小块光导管的功能。阳光穿过房屋立面的轻质隔板，掠过房间顶部的表面，进入蜂巢并通过天花板和墙壁在内部被反射和集中。空间被不断移动的太阳直射光形成的混合斑点和纸状结构再辐射形成的柔和光照射。有趣的是，灯光落在蜂巢格子上形成的图案会使人下意识地唤起对日光的感觉和回忆。我们曾在工作室的工作台上悬挂起这些天花板的仿制品，并为这样一个心理效果而惊喜。多层蜂巢墙壁具有良好的吸声效果，可创造出私密、安静的围合氛围。嵌入墙壁的壁龛和凹室在阴影里显示出它们的深度。很厚的墙壁甚至可以让发光二极管和荧光灯具藏身其中。来自窗户和灯具的光线洒落在墙壁上，被多层材料吸收，可以产生类似于大块的雪或者冰的发光效果。这为感知房间内部空间增加了另一个维度。我们知道我们不能扩大私人空间，但我们可以实现更为重要的事情——就是空间和光线的品质，使它们具有生命，具有一种独一无二的私人围合感，它温柔并无限可能地激发儿童的

创造性。

接着就是家庭的聚会空间，它的中心是厨房。作为私密房间的补充，它的空间也非常的灵活。儿童或成人可以有组织或随意地塑造住宅空间。灵活的隔断墙使用相同的材料，卧室位于厨房的两端，因此环境可以自由划分，或是拉出一面雕刻般的墙遮住厨房工作区，这可以使房间被压缩用作工作空间或是在家庭中较为正式晚餐场合来掩盖凌乱的厨房。蜂巢的隔断墙可以使洗衣、水槽、盥洗和洗浴的每个功能拥有它自己的独立空间并且有着雕刻般的效果。在夜晚，卧室在主要的家庭空间内部就像是巨大的雕刻纸灯，尤其是当只有孩子的房间被扩大而父母正在从一天的劳累中解放出来的时候。

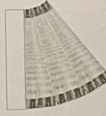
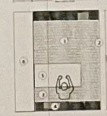
在提交这个报告的同时，我们进行了材料的试验，利用足尺模型探测白色棉纸的延燃性能（见于演示板）。我们希望效仿用棉纸材料创造出的光线、结构和空间柔和的特性，但是使用更为耐用便于维修的材料。与制造商一起，我们试验用细聚乙稀纤维压成的薄膜制作蜂巢结构。这种材料轻质强韧，触感光滑，低飞絮，透气，包括水、化学制品，不易被刺破、磨损和撕裂。有光泽的细纤维的聚乙烯薄膜呈半透明，质感非常接近纸张（请见演示的细部图片）。它用可回收材料制成并可以100%回收。聚乙烯薄膜着火时可以延迟燃烧20分钟。此报告附有一张薄膜样品。

我们希望这项工作有助于参加“超越东西方的设计”竞赛的人们的讨论和想像，并且发现这项设计是值得深入研究的。



Plan views of model showing transformations in the space layout

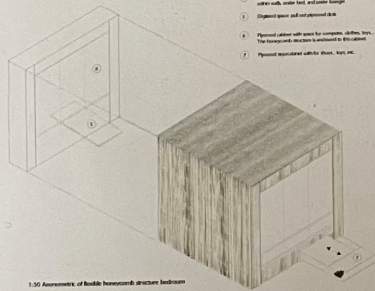
A Creative Environment
Children and Adults
play, learn, work, live



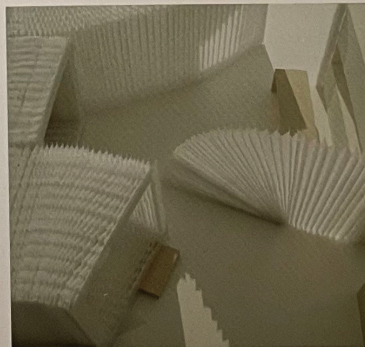
Private Room Section scale 1:50

Private Room Plan scale 1:50

Unit Plan expanded scale 1:50



1. Honeycomb lattice for honeycomb with honeycomb structure
2. Honeycomb structure right honeycomb with honeycomb structure
3. Honeycomb lattice
4. Kitchen and living storage area with honeycomb wall, honeycomb wall, honeycomb storage
5. Honeycomb wall and honeycomb wall
6. Honeycomb wall with honeycomb structure, honeycomb structure, honeycomb structure
7. Honeycomb structure with honeycomb structure, honeycomb structure



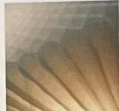
bedrooms and partition walls can be opened back in any direction



Elements of honeycomb tissue being opened up into walls - full size material explorations



Light transmittance and soft touch
Water stain resistant, air permeable
flexible



Integral lighting/luminosity



Sound and light absorbed within cells



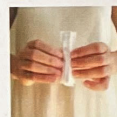
Shape memory



Resistance to tearing and puncture



Lightweight - less material for structure



Contracting



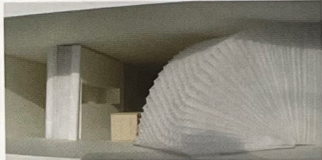
Expanding



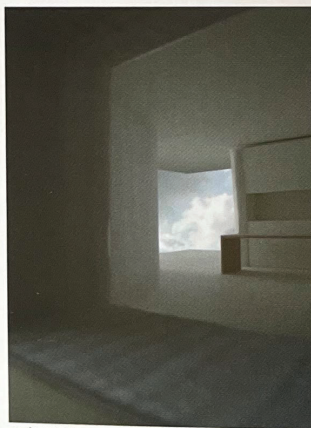
Flexibility



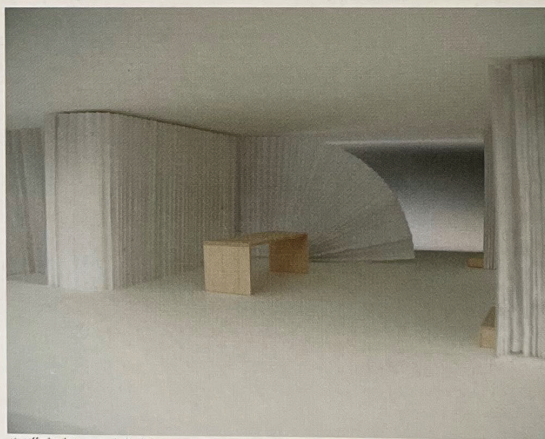
Full-size mock-up of honeycomb structure using tissue paper



child's room barred open like a tent onto the kitchen



view from inside bedroom



view of family gathering space with table, kitchen is covered with one of the honeycomb walls.

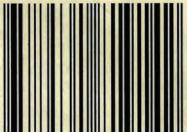
责任编辑：庞恩昌 王 云
封面设计：周 鑫
版式设计：周 鑫 白薇薇

超越东西方的设计 —— DBEW 国际设计竞赛获奖作品集

Design Beyond East & West — Collection of Winning Works of DBEW International Design Contest

本书为历届“超越东西方的设计”——DBEW国际设计竞赛的获奖作品集，囊括了历届大赛的全部获奖作品。此项大赛为世界高水平的室内设计大赛，参赛作品由来自世界各地的新锐设计师完成，展现出当代设计的前瞻性、创造性及实用性。因设计者文化背景、成长经历和实践经验的差异，参赛作品异彩纷呈，表现了国际青年设计师在发扬室内设计的前卫精神的同时对实际问题进行的深入思考，将给我们以多层次多角度的启迪。

ISBN 7-5618-1914-5



9 787561 819142 >

ISBN 7-5618-1914-5

定价：330.00元 (随书附赠光盘)