



US 20060170629A1

(19) **United States**

(12) **Patent Application Publication**
Baek

(10) **Pub. No.: US 2006/0170629 A1**

(43) **Pub. Date: Aug. 3, 2006**

(54) **DISPLAY DRIVER CIRCUIT, CURRENT SAMPLE/HOLD CIRCUIT AND DISPLAY DRIVING METHOD USING THE DISPLAY DRIVER CIRCUIT**

Publication Classification

(51) **Int. Cl.**
G09G 3/30 (2006.01)
(52) **U.S. Cl.** **345/76**

(75) Inventor: **Jong-Hak Baek, Yongin-si (KR)**

(57) **ABSTRACT**

Correspondence Address:
HARNES, DICKEY & PIERCE, P.L.C.
P.O. BOX 8910
RESTON, VA 20195 (US)

A display driver circuit may include, a shift register configured to shift a first clock signal to generate at least one second clock signal, a digital-to-analog conversion unit configured to convert digital gray-scale data to an analog gray-scale signal, a first sample/hold output circuit configured to sample/hold the analog gray-scale signal in response to the at least one second clock signal, and configured to provide the sampled/hold analog gray-scale signal to a plurality of first channels in response to a first latch enable signal, and a second sample/hold output circuit configured to sample/hold the analog gray-scale signal in response to the second clock signal, and configured to provide the sample/hold analog gray-scale signal to a plurality of second channels in response to a second latch enable signal.

(73) Assignee: **Samsung Electronics Co., LTD**

(21) Appl. No.: **11/340,705**

(22) Filed: **Jan. 27, 2006**

(30) **Foreign Application Priority Data**

Jan. 31, 2005 (KR) 2005-8629

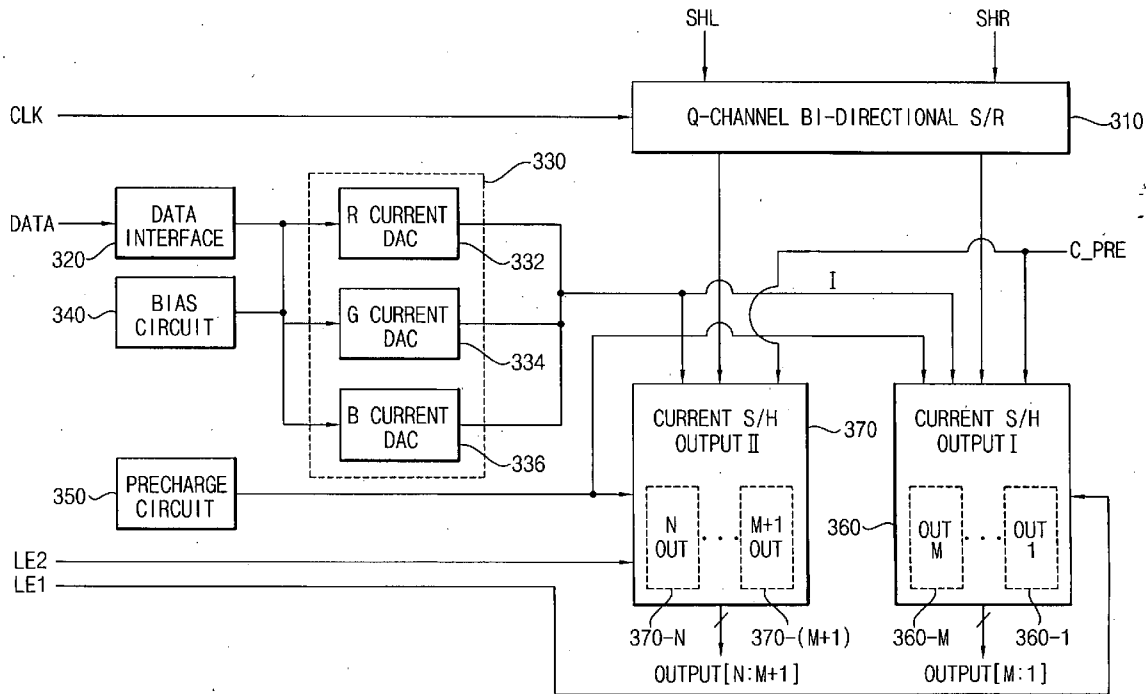


FIG. 1
(PRIOR ART)

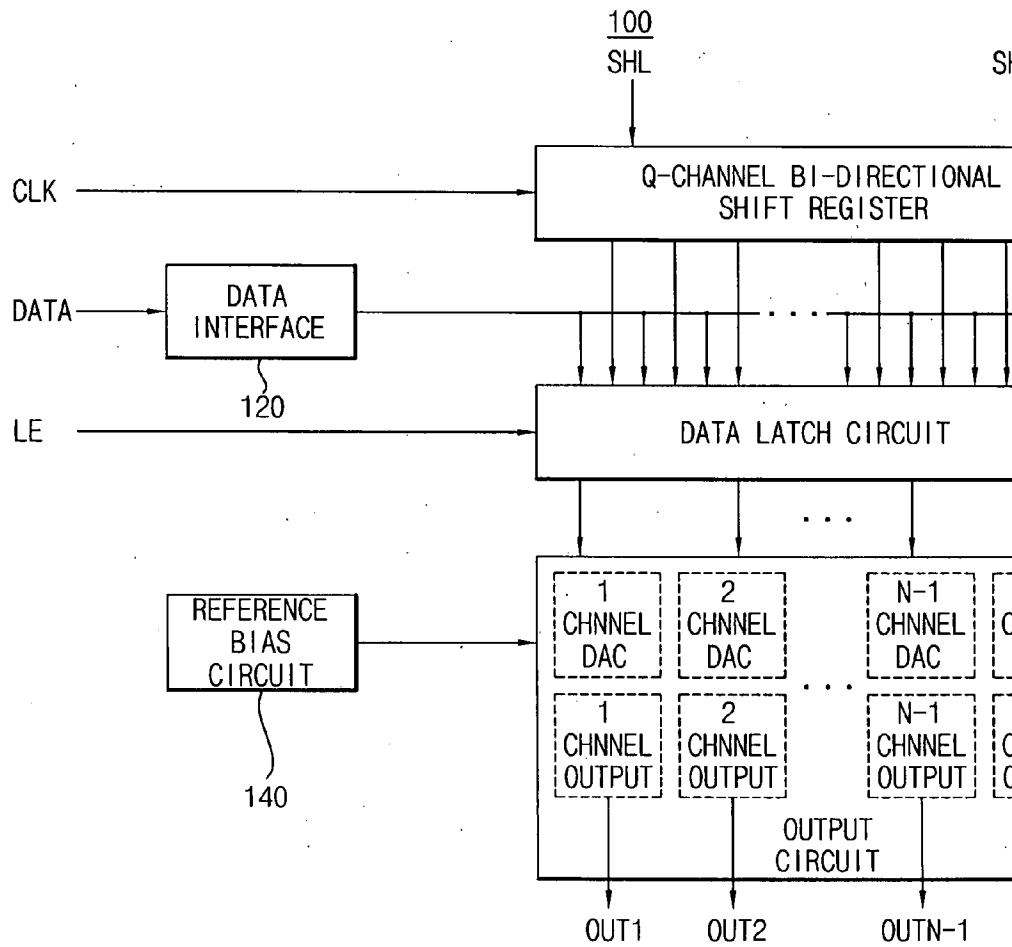


FIG. 2
(PRIOR ART)

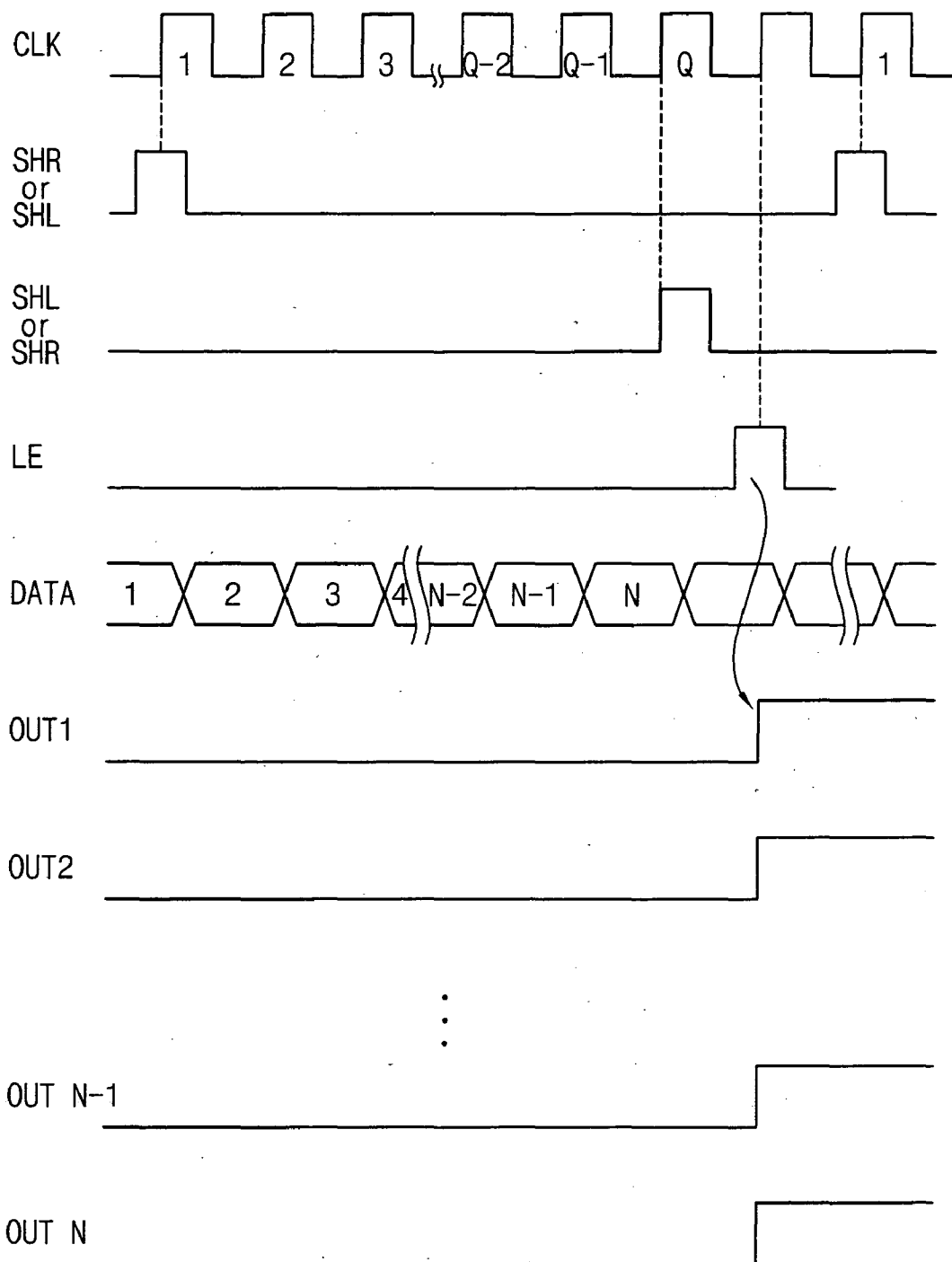


FIG. 3

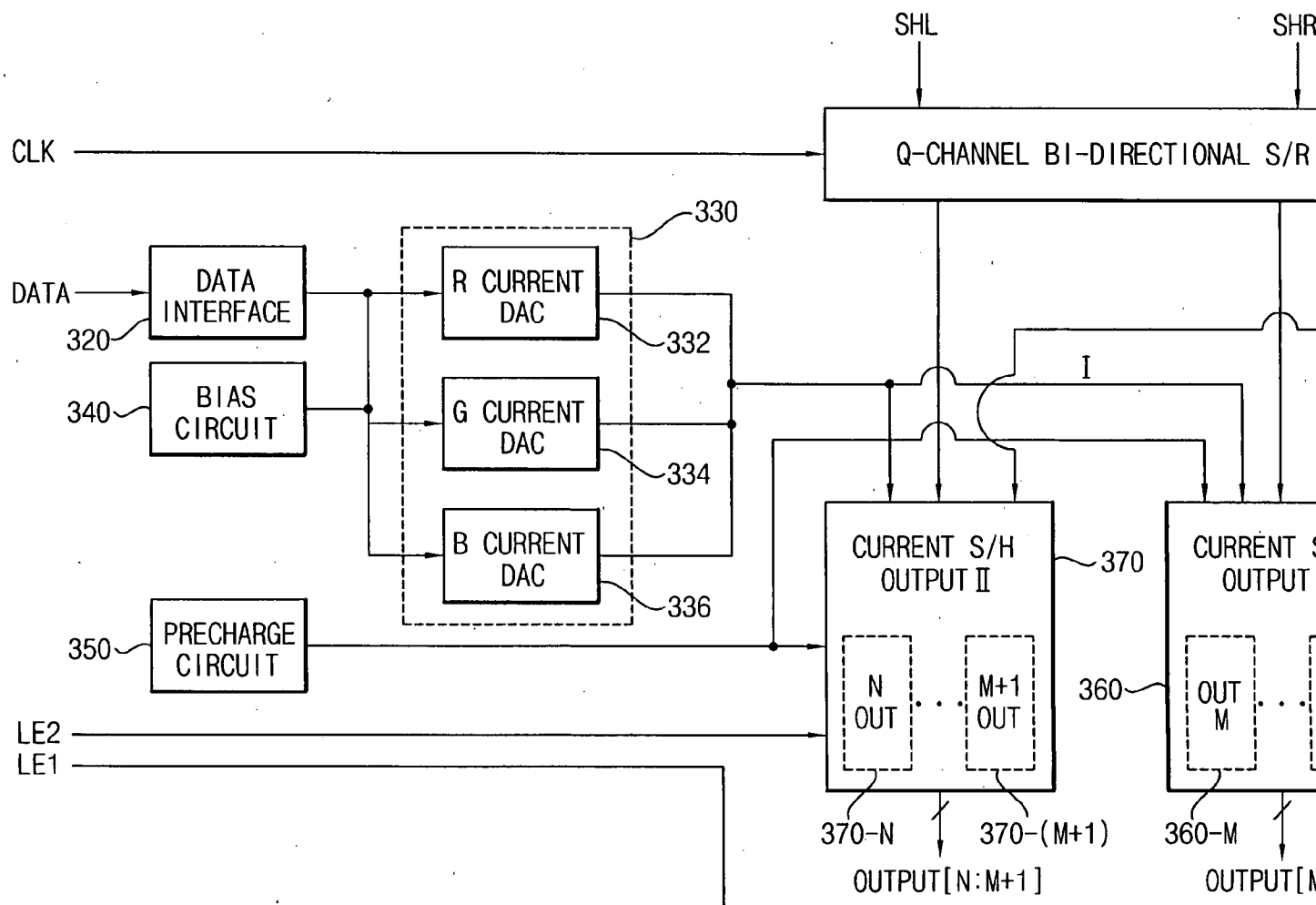
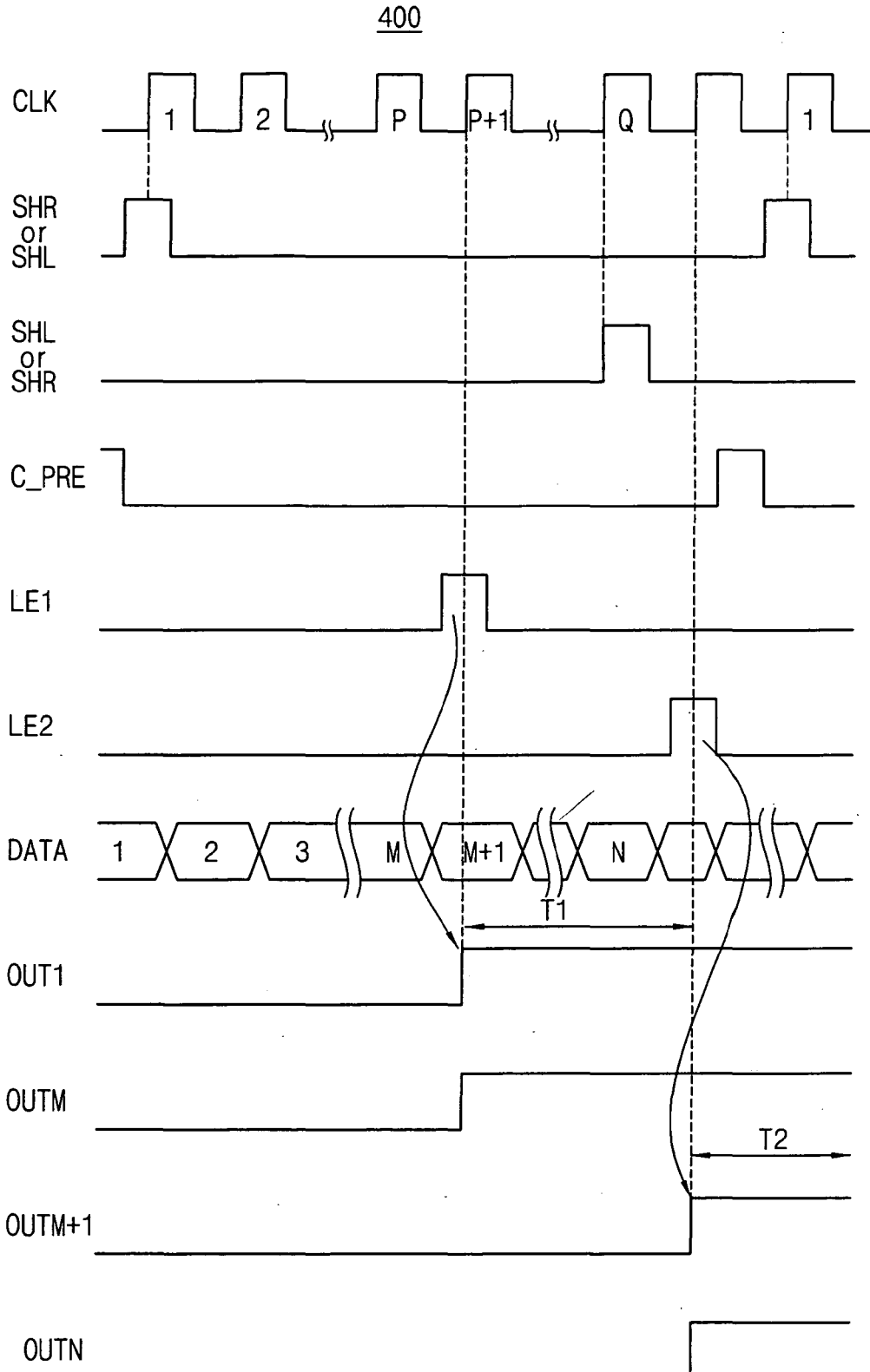


FIG. 4



Explore Litigation Insights

Docket Alarm provides insights to develop a more informed litigation strategy and the peace of mind of knowing you're on top of things.

Real-Time Litigation Alerts



Keep your litigation team up-to-date with **real-time alerts** and advanced team management tools built for the enterprise, all while greatly reducing PACER spend.

Our comprehensive service means we can handle Federal, State, and Administrative courts across the country.

Advanced Docket Research



With over 230 million records, Docket Alarm's cloud-native docket research platform finds what other services can't. Coverage includes Federal, State, plus PTAB, TTAB, ITC and NLRB decisions, all in one place.

Identify arguments that have been successful in the past with full text, pinpoint searching. Link to case law cited within any court document via Fastcase.

Analytics At Your Fingertips



Learn what happened the last time a particular judge, opposing counsel or company faced cases similar to yours.

Advanced out-of-the-box PTAB and TTAB analytics are always at your fingertips.

API

Docket Alarm offers a powerful API (application programming interface) to developers that want to integrate case filings into their apps.

LAW FIRMS

Build custom dashboards for your attorneys and clients with live data direct from the court.

Automate many repetitive legal tasks like conflict checks, document management, and marketing.

FINANCIAL INSTITUTIONS

Litigation and bankruptcy checks for companies and debtors.

E-DISCOVERY AND LEGAL VENDORS

Sync your system to PACER to automate legal marketing.