



[54] **METHOD FOR EXPLICIT DATA RATE CONTROL IN A PACKET COMMUNICATION ENVIRONMENT WITHOUT DATA RATE SUPERVISION**

[75] Inventor: **Robert L. Packer**, Los Gatos, Calif.

[73] Assignee: **Packeteer, Inc.**, Cupertino, Calif.

[*] Notice: This patent issued on a continued prosecution application filed under 37 CFR 1.53(d), and is subject to the twenty year patent term provisions of 35 U.S.C. 154(a)(2).

[21] Appl. No.: **08/742,994**

[22] Filed: **Nov. 1, 1996**

[51] **Int. Cl.⁷** **H04L 12/26**

[52] **U.S. Cl.** **370/231; 370/232; 370/235**

[58] **Field of Search** **370/229-238**

[56] **References Cited**

U.S. PATENT DOCUMENTS

5,042,029	8/1991	Hayakawa	370/60
5,193,151	3/1993	Jain	
5,359,593	10/1994	Derby et al.	
5,426,635	6/1995	Mitra et al.	
5,455,826	10/1995	Ozveren et al.	

OTHER PUBLICATIONS

Balakrishnan, H., et al., "Improving TCP/IP Performance Over Wireless Networks", Proc. of 1st ACM Conf. on Mobile Computing and Networking, Berkeley, CA, Nov. 1995, 10 pages.
RFC 793, "Transmission Control Protocol—DARPA Internet Program Protocol Specification", Postel, ed., 1981, 87 pages.

RFC 1122, "Requirements for Internet Hosts", Branden, ed., 1989, 116 pages.

20.3 Sliding Windows, *TCP/IP Illustrated*, vol. I, pp. 280-284.

10 Protocol Layering, *TCP/IP*, vol. I, pp. 139-144.

2.5 The Idea Behind Sliding Windows, *TCP/IP*, vol. I, pp. 175-177.

12.10 Variable Window Size and Flow Control, *TCP/IP*, vol. I, pp. 182-194.

14 TCP: Flow Control and Adaptive Retransmission, *TCP/IP*, vol. II, pp. 261-283.

Thomas, Stephen A., "IPng and the TCP/IP Protocols", John Wiley & Sons, Inc., pp. 239-240, 1996.

Fengmin Gong et al., "Study of a two-level flow control scheme and buffering strategies", INFOCOM'94. Networking for Global Communications., 13th Proceedings IEEE (94CH3401-7), vol. 3, pp. 1224-1233, Jun. 1994.

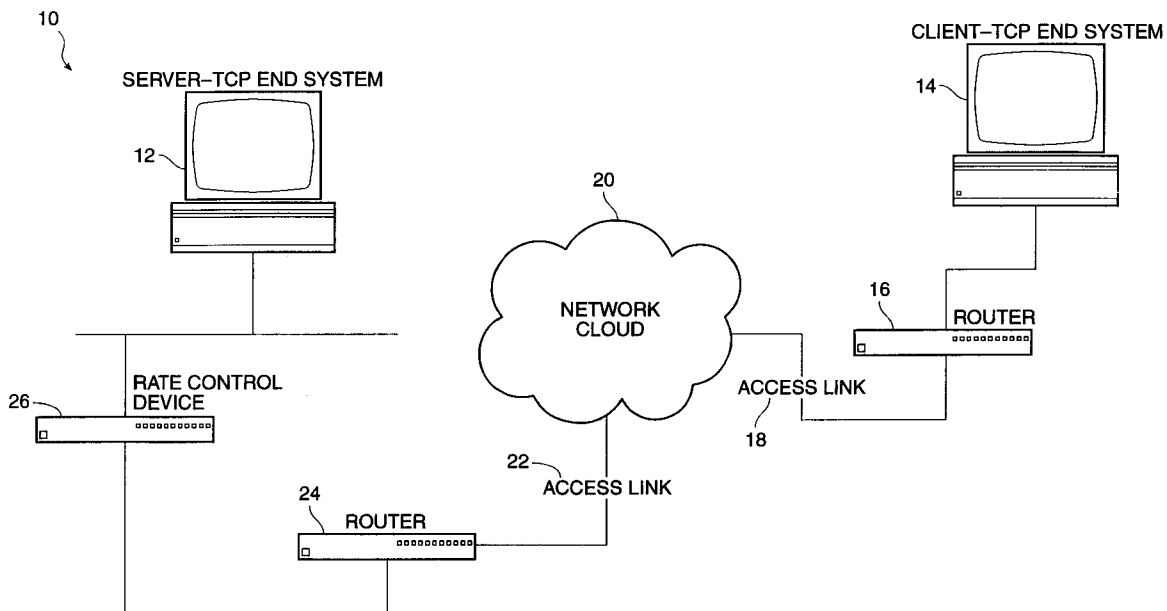
Roberts, Lawrence G. "Explicit Rate Flow Control." Apr. 1997, lroberts@ziplink.net; <http://www.ziplink.net/~lroberts/Ex...ate/Explicit-Rate-Flow-Control.htm>; pp. 1-14.

Primary Examiner—Melvin Marcelo
Attorney, Agent, or Firm—Townsend and Townsend and Crew LLP; Kenneth R. Allen

[57] **ABSTRACT**

A method for explicit data rate control is introduced into a packet communication environment (10) which does not have data rate supervision by adding latency to the acknowledgment (ACK) packet and by adjusting the size of the flow control window associated with the packet in order to directly control the data rate of the source data at the station (12 or 14) originating the packet.

19 Claims, 10 Drawing Sheets



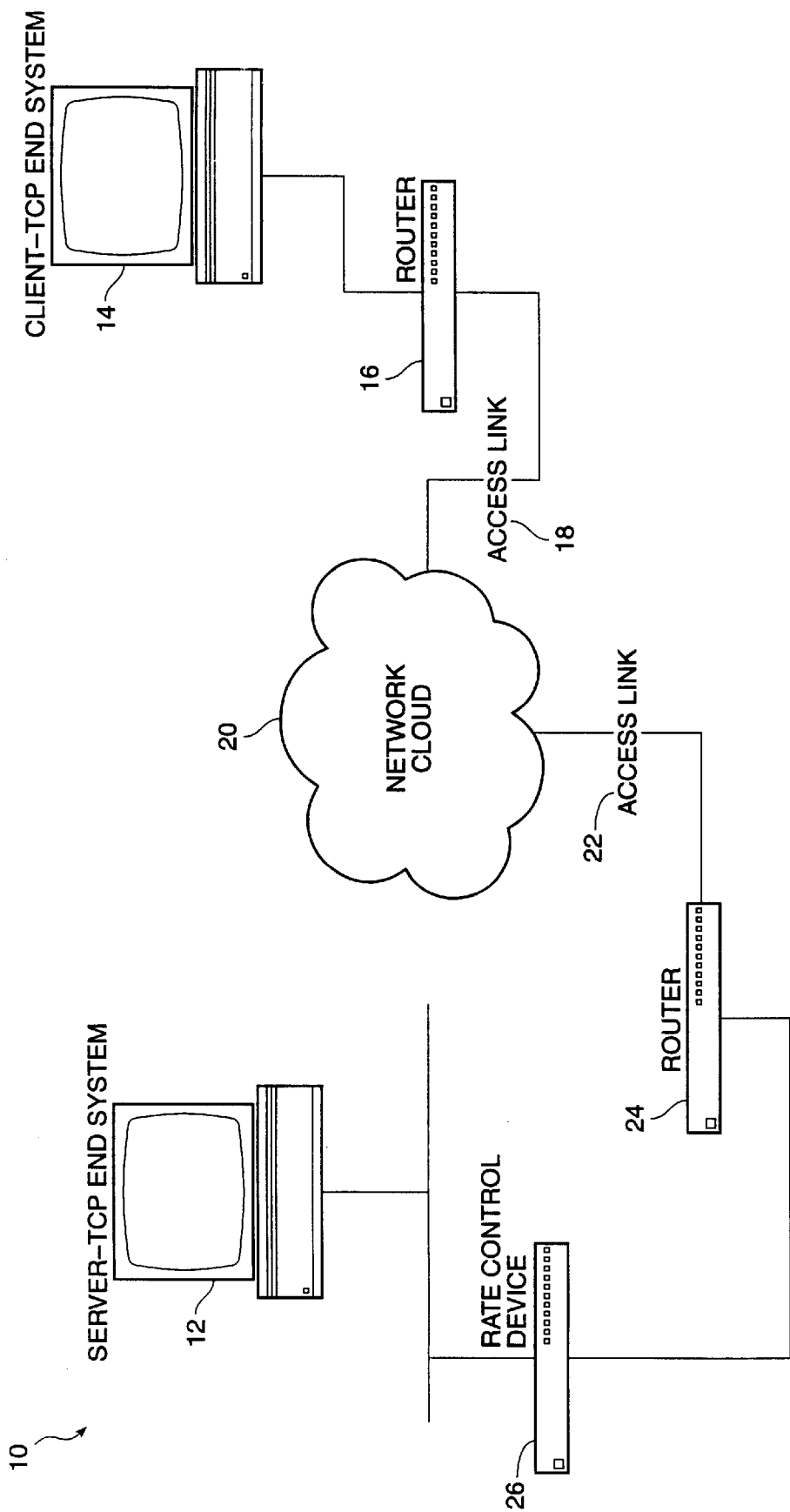


FIG. 1

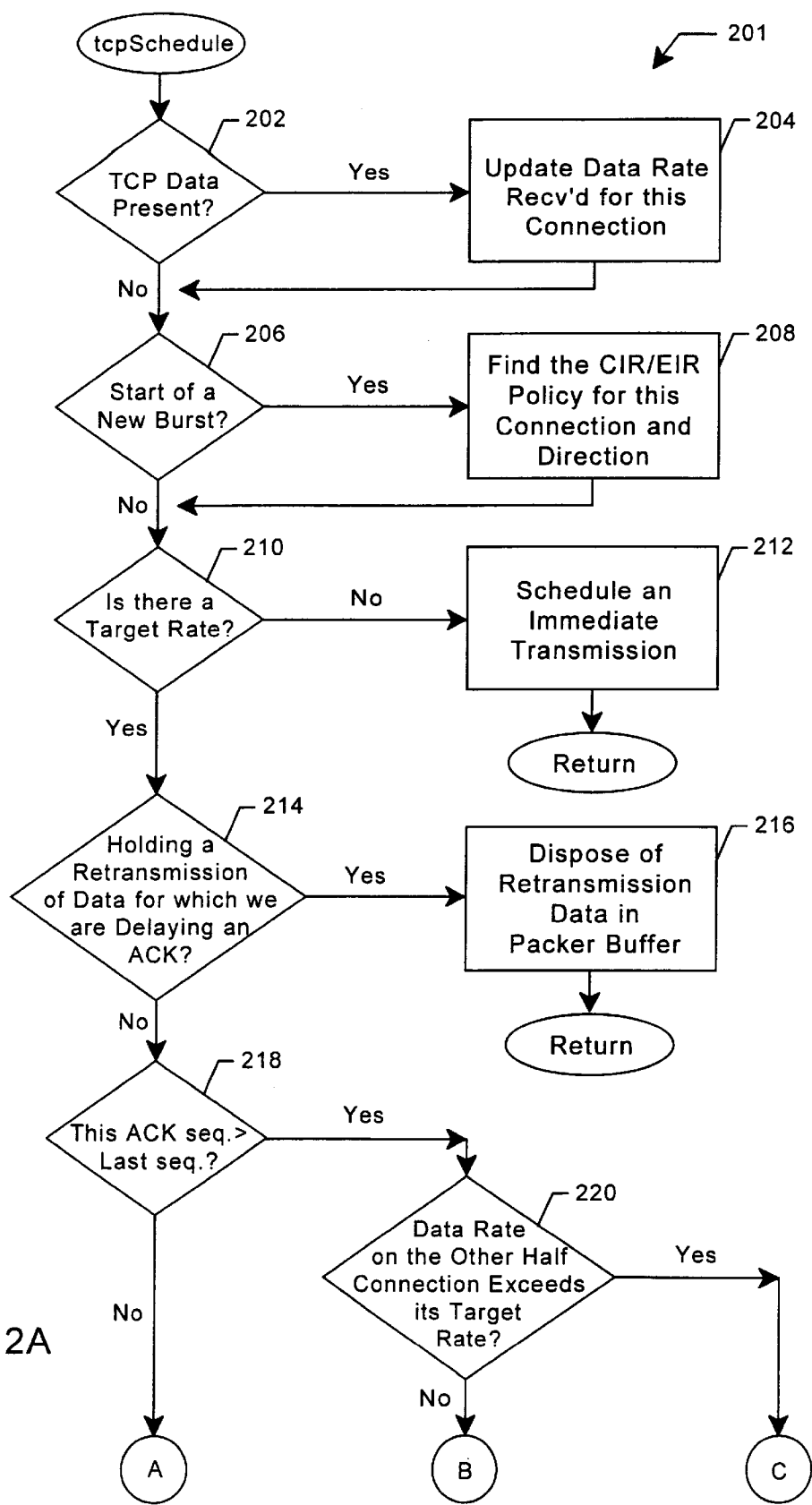


Fig. 2A

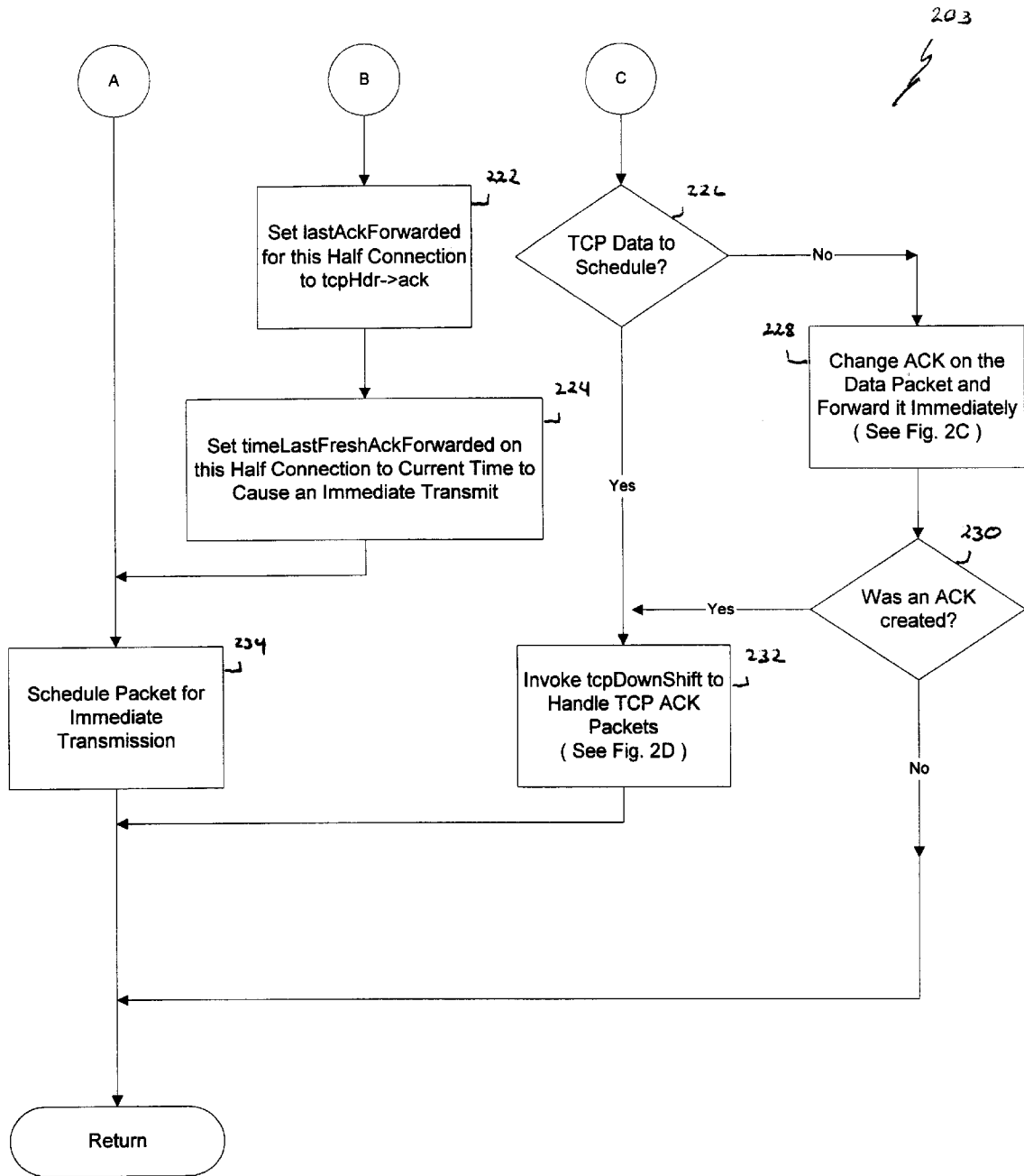


Fig. 2B

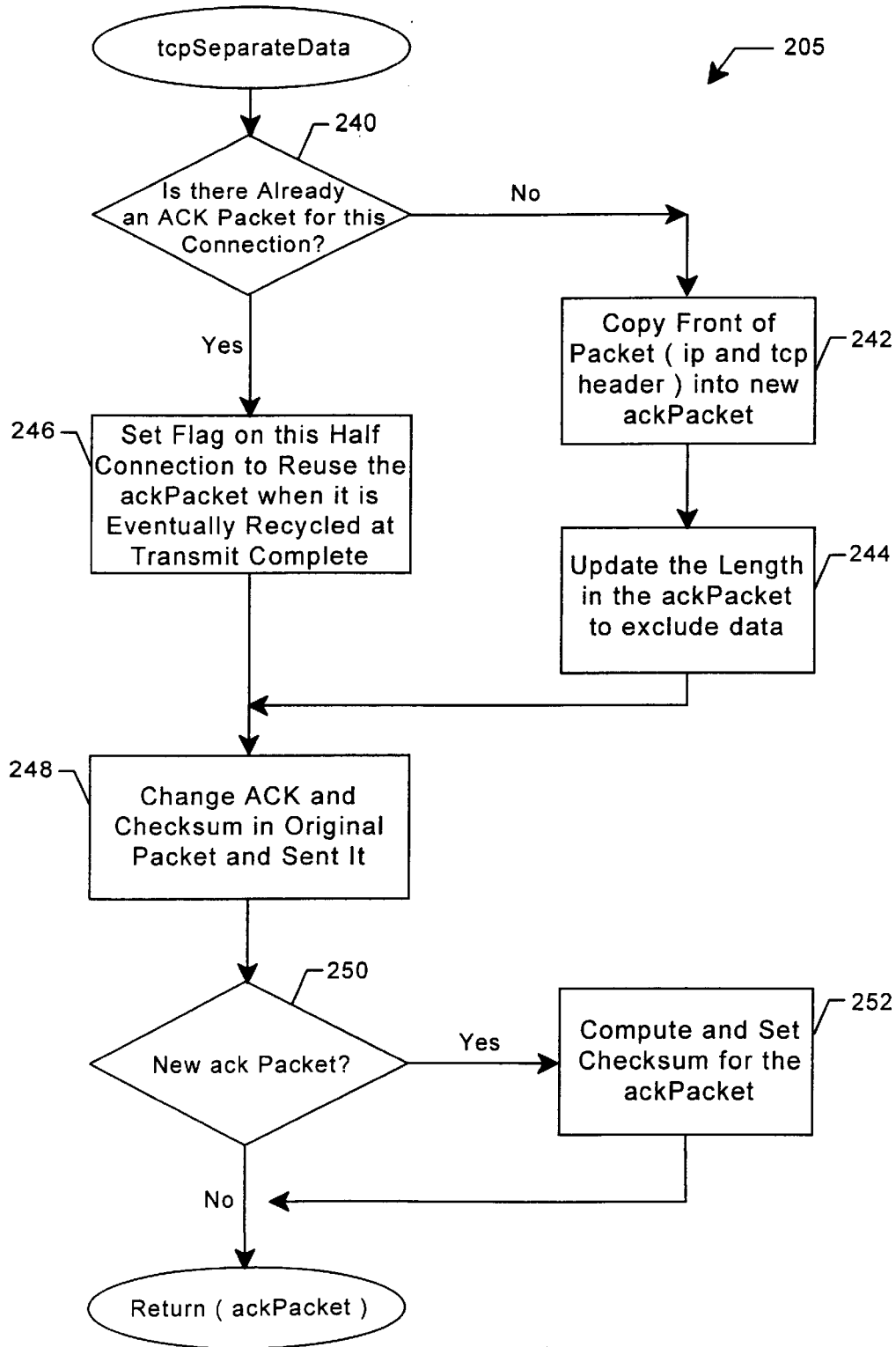


Fig. 2C
(Step 228 of Fig. 2B)

Explore Litigation Insights

Docket Alarm provides insights to develop a more informed litigation strategy and the peace of mind of knowing you're on top of things.

Real-Time Litigation Alerts



Keep your litigation team up-to-date with **real-time alerts** and advanced team management tools built for the enterprise, all while greatly reducing PACER spend.

Our comprehensive service means we can handle Federal, State, and Administrative courts across the country.

Advanced Docket Research



With over 230 million records, Docket Alarm's cloud-native docket research platform finds what other services can't. Coverage includes Federal, State, plus PTAB, TTAB, ITC and NLRB decisions, all in one place.

Identify arguments that have been successful in the past with full text, pinpoint searching. Link to case law cited within any court document via Fastcase.

Analytics At Your Fingertips



Learn what happened the last time a particular judge, opposing counsel or company faced cases similar to yours.

Advanced out-of-the-box PTAB and TTAB analytics are always at your fingertips.

API

Docket Alarm offers a powerful API (application programming interface) to developers that want to integrate case filings into their apps.

LAW FIRMS

Build custom dashboards for your attorneys and clients with live data direct from the court.

Automate many repetitive legal tasks like conflict checks, document management, and marketing.

FINANCIAL INSTITUTIONS

Litigation and bankruptcy checks for companies and debtors.

E-DISCOVERY AND LEGAL VENDORS

Sync your system to PACER to automate legal marketing.