



[Sign up](#) | [Upload](#) | [Places](#) | [Tags](#)

[Forum](#) | [Blog](#) | [Sign in](#) | [Help](#)

## Panoramio Help

Search Panoramio help articles.

### Help topics

[Help home](#)  
[Viewing photos](#)  
[Adding photos to Panoramio](#)  
[Tagging photos](#)  
[Understanding popularity in Panoramio](#)  
[Getting your photos into Google Earth](#)  
[Changing previously posted photos](#)  
[Showing your photos to friends](#)  
[Sharing and community](#)

### Embedding a Panoramio map into your web page

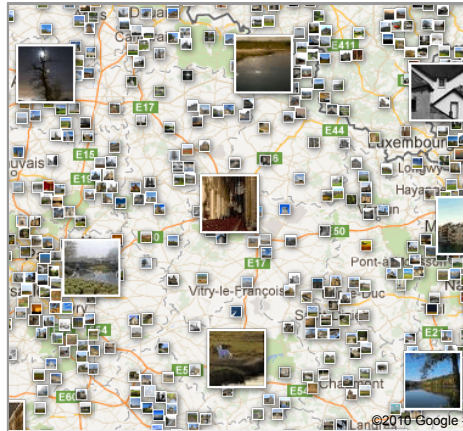
[Format for your code](#)  
[Tips on writing the code](#)

[Usernames, passwords, and accounts](#)  
[Getting more involved with Panoramio](#)  
[Becoming a Panoramio translator](#)  
[Troubleshooting](#)  
[Panoramio policies and legalities](#)  
[Spam in comments](#)  
[Suggesting a new cool place](#)

## Embedding a Panoramio map into your web page

Add a bit of Panoramio to your website or blog! It's a nice way to show off your vacation photos, photos of the place you're visiting, and so on. With just a snippet of code, your page can display a small map of the world or a portion of the world with up to twenty photos. Here's an example.

Embedded Panoramio map



To embed a Panoramio map in your web page or blog, you'll need to enter a bit of HTML code, as the next sections explain. The embedded map isn't quite the same as the regular Panoramio map. You specify the area you want to show and the embedded Panoramio shows just the photos in the specified map area. If you change the location on the map, no photos appear.

On your own website or blog, a Panoramio icon will appear in the lower right corner.

### Format for your code

Following is the format of the code that inserts the embedded Panoramio map. You can enter this into your website's HTML code or into your blog, replacing each value in colored italics with your own values.

If you use Blogger, write the code above in the **Edit HTML** tab.

The code is shown in multiple lines to make it easy to read, but your own line of code do not need to have any line breaks.

```
<iframe src="http://www.panoramio.com/plugin/?
  lt="latitude"&ln=longitude&z="zoom"&k="map-type"&
  user="user-ID" width="widthpx" height="heightpx">
</iframe>
```

In this format:

- *latitude* is the latitude of the center of the map, in decimal format.
- *longitude* is the longitude to show at the center of the map, in decimal format.
- *zoom* is the zoom level of the map. The available range depends on the location where you've centered the map. Lower numbers indicate a closer look, such as -2 or -3, which is the closest view of a city. Level 7 indicates the approximate size of a country, and level 15 indicates the entire world.
- *map-type* is one of the following numbers:
  - 0 (zero) creates a plain map
  - 1 creates a satellite map
  - 2 creates a hybrid map with both a satellite view and a plain view
- *user-ID* is the ID of the user whose photos you want to show. To show photos from all users, omit this parameter.
- *width* and *height* specify the size of the frame in pixels. Try experimenting with this parameter to determine how wide you want the map. You can create a map of any square or rectangular size, but the map might behave differently at different sizes.

Here's some example code to use for experimenting. Copy it and put it into an HTML page to show the world in an embedded Panoramio frame.

```
<iframe src="http://www.panoramio.com/plugin/?lt=28&ln=-33&z=17&k=2" width="250px" height="250px">
```

## Panoramio - Help - Embedding a Panoramio map into your web page

In this example:

- The latitude is 28.
- The longitude is -33.
- The zoom level is 17.
- The map type is 2 (hybrid).
- The user is omitted so photos from all users will appear.
- The map is 250 pixels high and 250 pixels wide.

**Tips on writing the code**

To find information to help you write your code:

1. In Panoramio, display the world map.
2. Search for a place, and adjust the zoom level the way you like it.
3. In the browser address bar, note the URL. You'll see values for the latitude (l value) , longitude (ln value) , zoom level (z value) and map type (k value). For example, a map of Central Park, New York might have the following URL:

```
http://www.panoramio.com/map/#lt=40.782719&ln=-73.964767&z=3&k=1&a=1&tab=1
```

In this example, the latitude is 40.782719, the longitude is -73.964767, the zoom level is 3, and the map type (kind of map) is 1. The last two attributes are not available for use with the embedded Panoramio map.

4. Put the code on your website. Here's the code that you'd use for the previous example, with line breaks added for readability in this document:

```
<iframe src="http://www.panoramio.com/plugin/?  
    lt="40.782719"&ln="-73.964767"&z="3"&k="1"&  
    width="500px" height="500px">  
</iframe>
```

To show only the photos from a specific person, include the person's user number, as it appears in the URL of his or her personal page. For example, here's an example that shows just the photos of user <http://www.panoramio.com/user/7>:

```
<iframe src="http://www.panoramio.com/plugin/?lt=28&ln=-33&z=17&user=7&k=1"  
    width="450px" height="450px"></iframe>
```