



## OTHER PUBLICATIONS

- Mihalcea, R. and Moldovan, D. "Semantic Indexing using WordNet Senses", Proceedings of the ACL Workshop on IR and NLP Oct. 2000.\*
- Budanitsky, A. "Lexical Semantic Relatedness and its Application in Natural Language Processing", Technical Report CSRG-390, Computer Systems Research Group, University of Toronto, Aug. 1999.\*
- Resnick, P. "Semantic Similarity in a Taxonomy: An Information-Based Measure and its Application to Problems of Ambiguity in Natural Language", Journal of Artificial Intelligence Research, vol. 11, Jul. 1999.\*
- Smeaton, A.F. and Quigley, I. "Experiments on Using Semantic Distances Between Words in Image Caption Retrieval", Proceedings of the 19<sup>th</sup> International Conference on Research and Development in Information Retrieval, Aug. 1996. pp. 174-180.\*
- Sutcliffe, R.F.E. et al. "Beyond Keywords: Accurate Retrieval from Full Text Documents", Proceedings of the 2<sup>nd</sup> Language Engineering Convention, Oct. 16-18, 1995.\*
- Chakravarthy, A.S. and Haase, K.B. "NetSerf: Using Semantic Knowledge to Find Internet Information Archives", Proceedings of the 18<sup>th</sup> Annual International ACM SIGIR Conference on Research and Development in Information Retrieval, Jul. 1995, pp. 4-11.\*
- Sutcliffe, R.F.E. et al. "The Automatic Acquisition of a Board-Coverage Semantic Lexicon for use in Information Retrieval", Proc of the AAAI Symp 'Representation and Acquisition of Lexical Knowledge: Polysemy, Ambiguity and Generativity, Mar. 27-29, 1995.\*
- St-Onge, D. "Detecting and Correcting Malapropisms with Lexical Chains", M.S. Thesis, University of Toronto, Mar. 1995.\*
- Richardson, R., Smeaton, A.F. and Murphy, J. "Using Wordnet for Conceptual Distance Measurement", roc. of the 16<sup>th</sup> Research Colloquium of the BCS-IRSG, 1994. pp. 100-123.\*
- Buckley, C. et al. "Automatic Query Expansion Using SMART: TREC-3", Proceedings of the Text Retrieval Conference (TREC3), Nov. 1994, pp. 69-81.\*
- Voorhees, E.M. "Query Expansion Using Lexical-Semantic Relations", Proceedings of the 17<sup>th</sup> Annual International ACM-SIGIR Conference on Research and Development in Information Retrieval, Jul. 1994, pp. 61-69.\*
- Rada, R. et al. "Development and Application of a Metric on Semantic Nets", IEEE Transactions of Systems, Man and Cybernetics, vol. 19, No. 1, Jan./Feb./ 1989, pp. 17-30.\*
- Brachman, R.J. and Schmolze, J.G. "An Overview of the KL-ONE Knowledge Representation System", Cognitive Science, vol. 9, 1985, pp 171-216.\*
- Collins, A.M. and Loftus, E.F. "A Spreading-Activation Theory of Semantic Processing", Psychological Review, vol. 82, No. 6, 1975, pp. 407-428.\*

\* cited by examiner

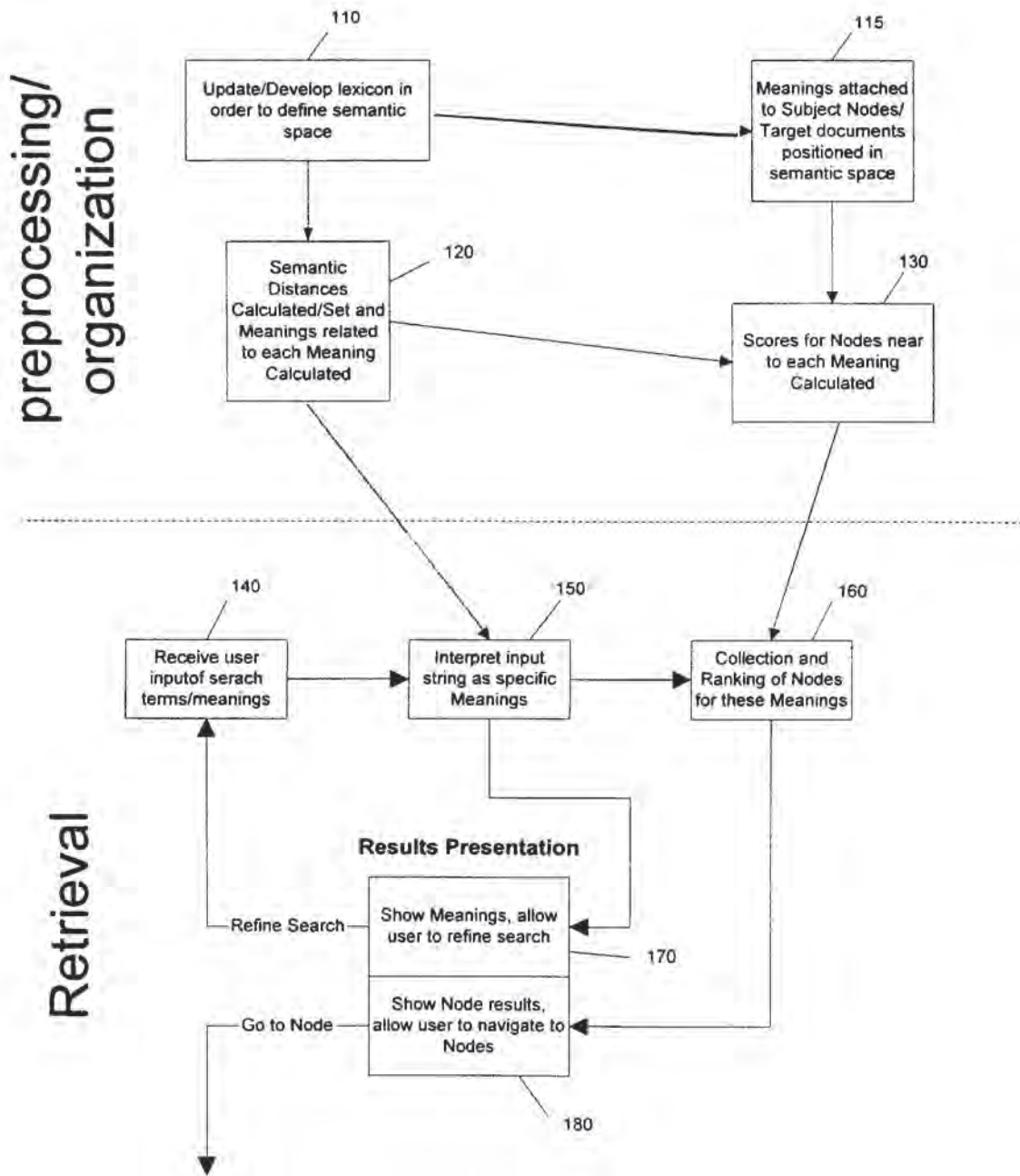
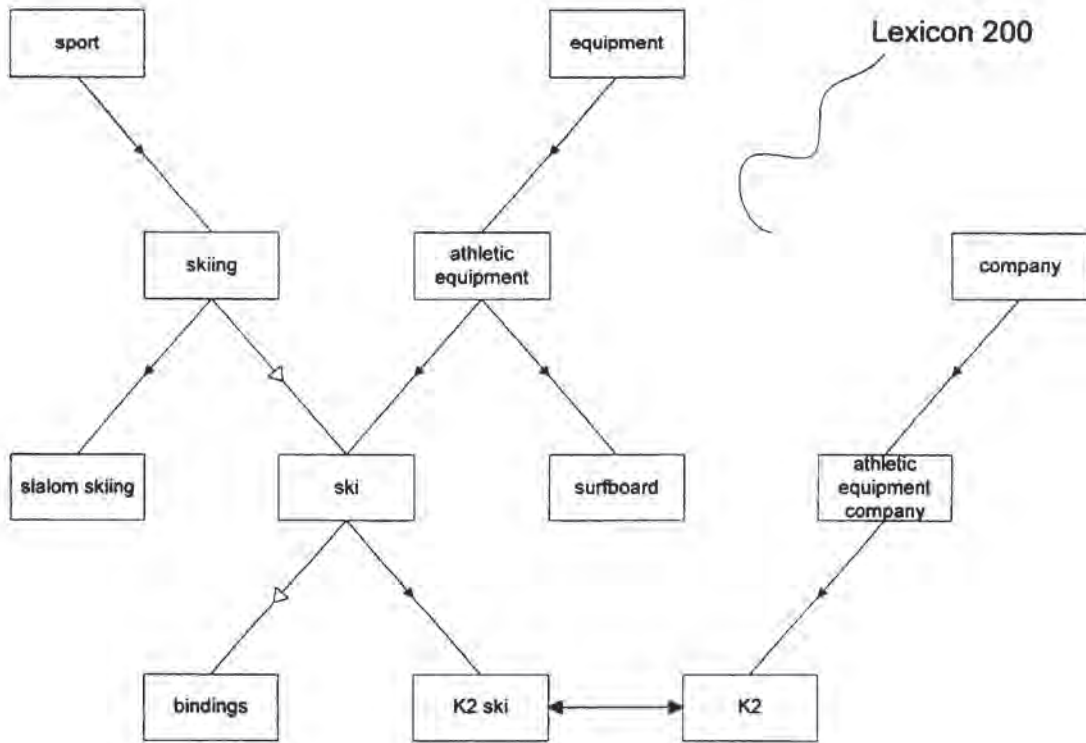


FIGURE 1

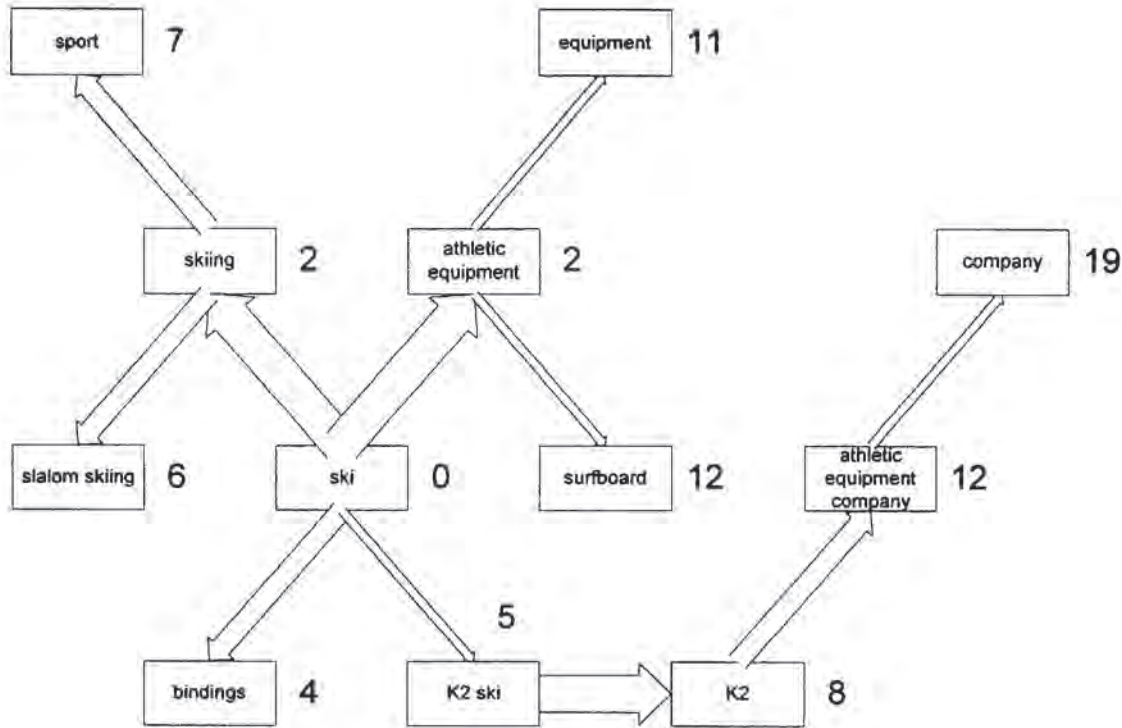




LEGEND:

- ▷— "part of" relationship
- ▶— "kind of" relationship
- ◄—▶ lateral bond relationship

FIGURE 2



LEGEND:

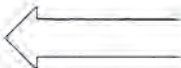
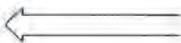

-  strong relationship
-  medium relationship
-  weak relationship
- X distance from "ski"

FIGURE 3

# Explore Litigation Insights

Docket Alarm provides insights to develop a more informed litigation strategy and the peace of mind of knowing you're on top of things.

## Real-Time Litigation Alerts



Keep your litigation team up-to-date with **real-time alerts** and advanced team management tools built for the enterprise, all while greatly reducing PACER spend.

Our comprehensive service means we can handle Federal, State, and Administrative courts across the country.

## Advanced Docket Research



With over 230 million records, Docket Alarm's cloud-native docket research platform finds what other services can't. Coverage includes Federal, State, plus PTAB, TTAB, ITC and NLRB decisions, all in one place.

Identify arguments that have been successful in the past with full text, pinpoint searching. Link to case law cited within any court document via Fastcase.

## Analytics At Your Fingertips



Learn what happened the last time a particular judge, opposing counsel or company faced cases similar to yours.

Advanced out-of-the-box PTAB and TTAB analytics are always at your fingertips.

## API

Docket Alarm offers a powerful API (application programming interface) to developers that want to integrate case filings into their apps.

## LAW FIRMS

Build custom dashboards for your attorneys and clients with live data direct from the court.

Automate many repetitive legal tasks like conflict checks, document management, and marketing.

## FINANCIAL INSTITUTIONS

Litigation and bankruptcy checks for companies and debtors.

## E-DISCOVERY AND LEGAL VENDORS

Sync your system to PACER to automate legal marketing.