



US007231379B2

(12) **United States Patent**
Parikh et al.

(10) **Patent No.:** **US 7,231,379 B2**

(45) **Date of Patent:** **Jun. 12, 2007**

(54) **NAVIGATION IN A HIERARCHICAL
STRUCTURED TRANSACTION
PROCESSING SYSTEM**

(75) Inventors: **Prashant Parikh**, New York, NY (US);
Stanley Peters, Menlo Park, CA (US)

(73) Assignee: **Noema, Inc.**, New York, NY (US)

(*) Notice: Subject to any disclaimer, the term of this
patent is extended or adjusted under 35
U.S.C. 154(b) by 485 days.

(21) Appl. No.: **10/299,359**

(22) Filed: **Nov. 19, 2002**

(65) **Prior Publication Data**

US 2004/0098381 A1 May 20, 2004

(51) **Int. Cl.**
G06F 17/30 (2006.01)

(52) **U.S. Cl.** 707/2; 707/6; 707/3; 707/4

(58) **Field of Classification Search** 707/1,
707/2, 3, 4, 5, 6, 7, 8, 9, 10, 100, 101, 102,
707/103, 104.1

See application file for complete search history.

(56) **References Cited**

U.S. PATENT DOCUMENTS

5,812,134 A * 9/1998 Pooser et al. 707/102

6,038,560 A * 3/2000 Wical 707/5

6,405,188 B1 6/2002 Schwartz et al.

6,408,290 B1 * 6/2002 Thiesson et al. 706/52

6,510,406 B1 1/2003 Marchisio

6,654,731 B1 * 11/2003 Mahesh 706/45

6,675,159 B1 1/2004 Lin et al.

6,678,677 B2 * 1/2004 Roux et al. 707/3

6,859,212 B2 2/2005 Kumar et al.

* cited by examiner

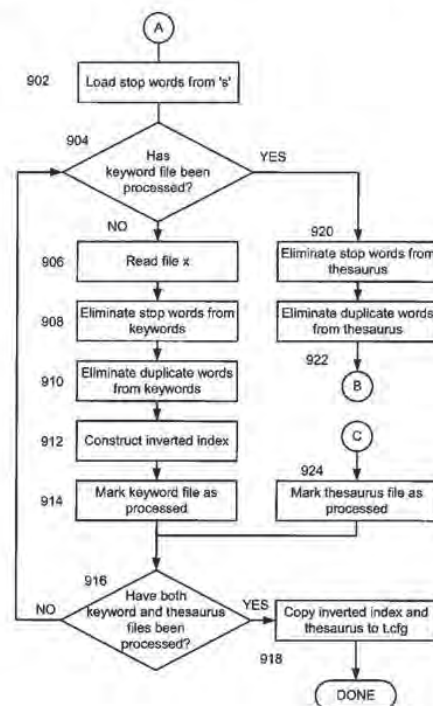
Primary Examiner—Yicun Wu

(74) *Attorney, Agent, or Firm*—Morgan & Finnegan LLP

(57) **ABSTRACT**

A method performed in a system having multiple navigable nodes interconnected in a hierarchical arrangement involves receiving an input containing at least one word identifiable with at least one keyword, identifying at least one node, other than the first node, not directly connected to the first node, but associated with the at least one keyword, and jumping to the identified node. A transaction processing system having a hierarchical arrangement of nodes and is configured for user navigation among the nodes. The system has an inverted index correlating keywords with at least some nodes in the arrangement so that when the user provides an input in response to a verbal description and the response includes a meaningful word correlatable with a keyword, the system will identify at least one node correlated to the meaningful word by the inverted index and jump to that node without first traversing any other node.

7 Claims, 11 Drawing Sheets



PETITIONERS - EXHIBIT 1001

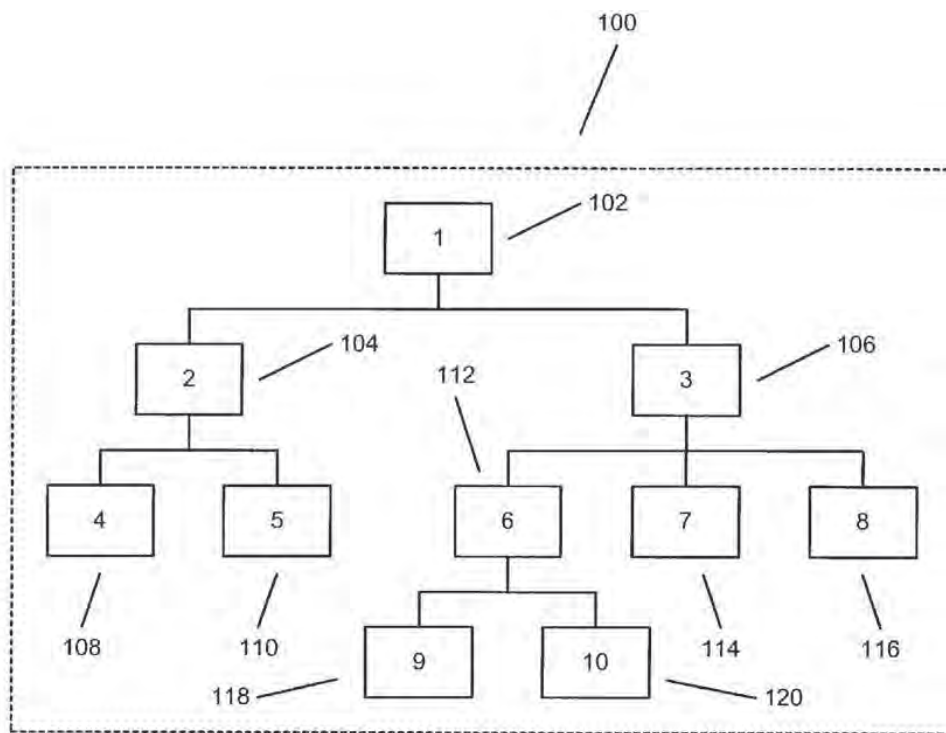


FIG. 1

FIG. 2

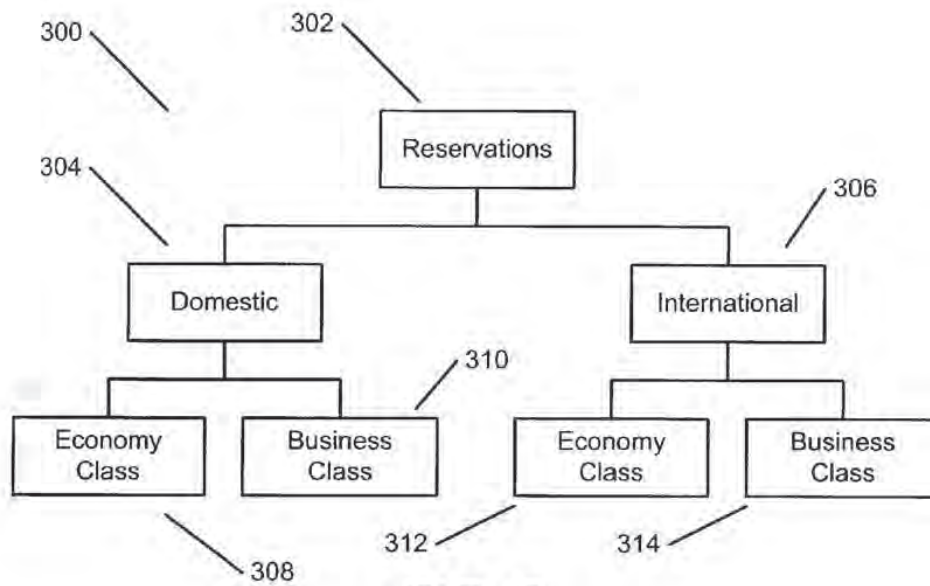
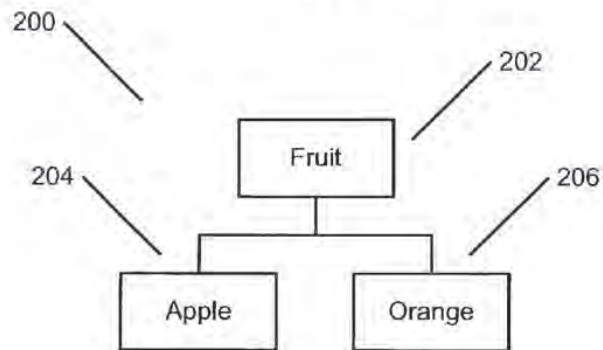


FIG. 3

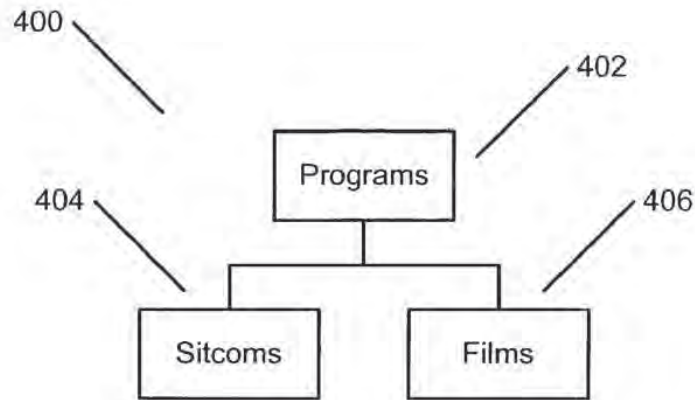


FIG. 4

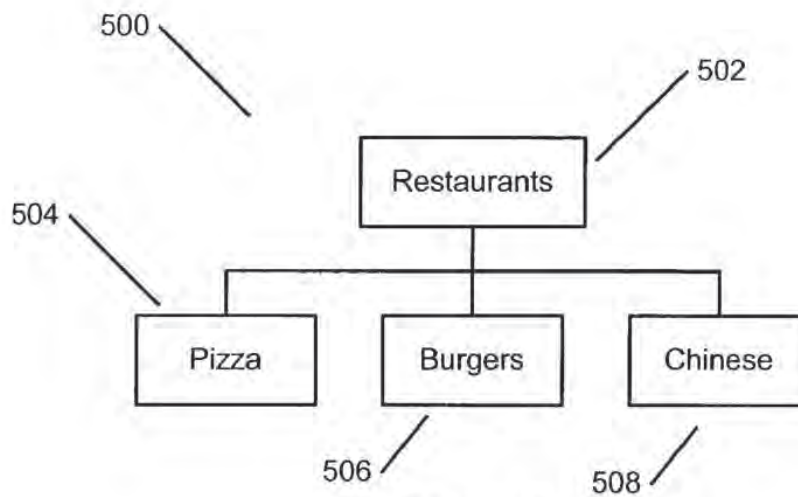


FIG. 5

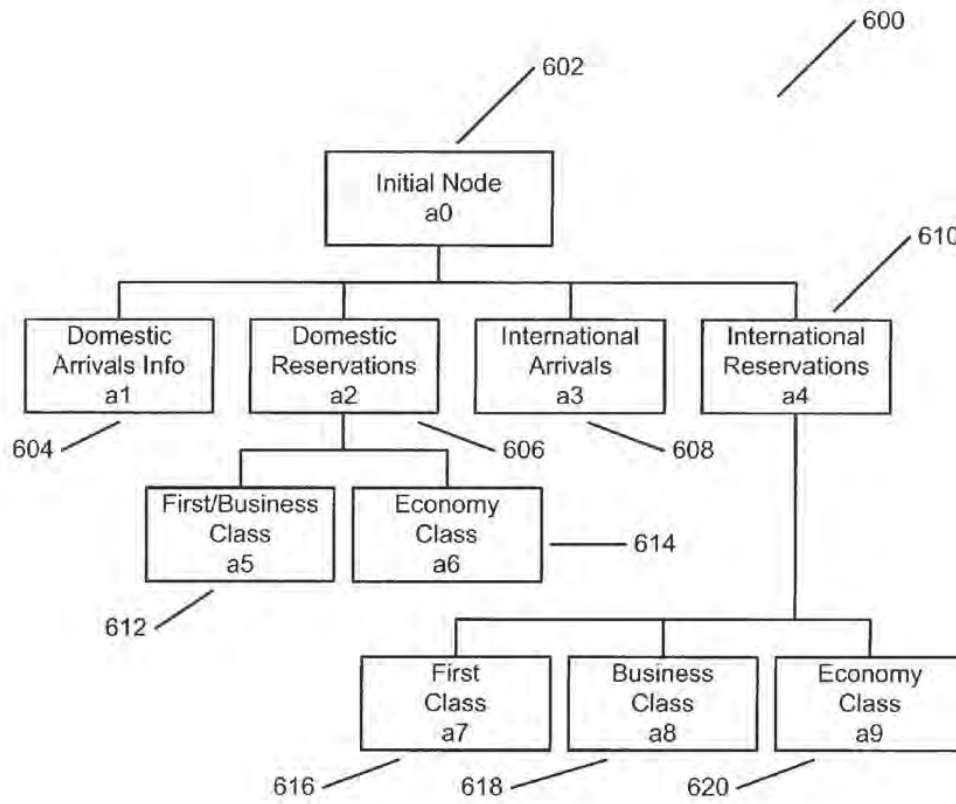


FIG. 6

Explore Litigation Insights

Docket Alarm provides insights to develop a more informed litigation strategy and the peace of mind of knowing you're on top of things.

Real-Time Litigation Alerts



Keep your litigation team up-to-date with **real-time alerts** and advanced team management tools built for the enterprise, all while greatly reducing PACER spend.

Our comprehensive service means we can handle Federal, State, and Administrative courts across the country.

Advanced Docket Research



With over 230 million records, Docket Alarm's cloud-native docket research platform finds what other services can't. Coverage includes Federal, State, plus PTAB, TTAB, ITC and NLRB decisions, all in one place.

Identify arguments that have been successful in the past with full text, pinpoint searching. Link to case law cited within any court document via Fastcase.

Analytics At Your Fingertips



Learn what happened the last time a particular judge, opposing counsel or company faced cases similar to yours.

Advanced out-of-the-box PTAB and TTAB analytics are always at your fingertips.

API

Docket Alarm offers a powerful API (application programming interface) to developers that want to integrate case filings into their apps.

LAW FIRMS

Build custom dashboards for your attorneys and clients with live data direct from the court.

Automate many repetitive legal tasks like conflict checks, document management, and marketing.

FINANCIAL INSTITUTIONS

Litigation and bankruptcy checks for companies and debtors.

E-DISCOVERY AND LEGAL VENDORS

Sync your system to PACER to automate legal marketing.