

ventional trial has yet investigated whether the addition of EPA to conventional statin treatment would yield an incremental clinical benefit. The Japan EPA Lipid Intervention Study (JELIS) tests the hypothesis that long-term use of EPA is effective in reduction of major coronary events in Japanese hypercholesterolaemic patients given statins.

Methods

Study design and patients

We did a prospective, randomised open-label, blinded endpoint evaluation (PROBE).²⁶ Our study design, and inclusion and exclusion criteria are described in detail elsewhere.²⁷ We recruited 19 466 hypercholesterolaemic patients through local physicians from all regions of Japan between November, 1996, and November, 1999. Figure 1 shows the trial profile. The participants consisted of 5859 men (aged 40–75 years) and 12 786 postmenopausal women (aged up to 75 years), with or without coronary artery disease, which was defined as previous myocardial infarction, coronary interventions, or confirmed angina pectoris. Informed written consent was obtained from all eligible patients before random assignment to either the EPA treatment or control groups.

Eligibility criteria were total cholesterol concentration of 6.5 mmol/L or greater, which corresponded to a LDL cholesterol of 4.4 mmol/L or greater. Exclusion criteria were: acute myocardial infarction within the past 6 months, unstable angina pectoris, a history or complication of serious heart disease (such as severe arrhythmia, heart failure, cardiomyopathy, valvular disease, or congenital disease), cardiovascular reconstruction within the past 6 months, cerebrovascular disorders within the past 6 months, complications of serious hepatic or renal disease, malignant disease, uncontrollable diabetes, hyperlipidaemia due to other disorders, hyperlipidaemia caused by drugs such as steroid hormones, haemorrhage (including haemophilia, capillary fragility, gastrointestinal ulcer, urinary tract haemorrhage, haemoptysis, and vitreous haemorrhage), haemorrhagic diathesis, hypersensitivity to the study drug formulation, patients' intention to undergo surgery, and judgment by the physician in charge that a patient was inappropriate for the study.

The primary endpoint was any major coronary event, including sudden cardiac death, fatal and non-fatal myocardial infarction, and other non-fatal events including unstable angina pectoris, angioplasty, stenting, or coronary artery bypass grafting. Secondary endpoints (all-cause mortality, mortality and morbidity of coronary artery disease, stroke, peripheral artery disease, and cancer) are not reported here.

Procedures

We used the statistical coordination centre at the Toyama Medical and Pharmaceutical University to manage patient registration (including confirmation of eligibility

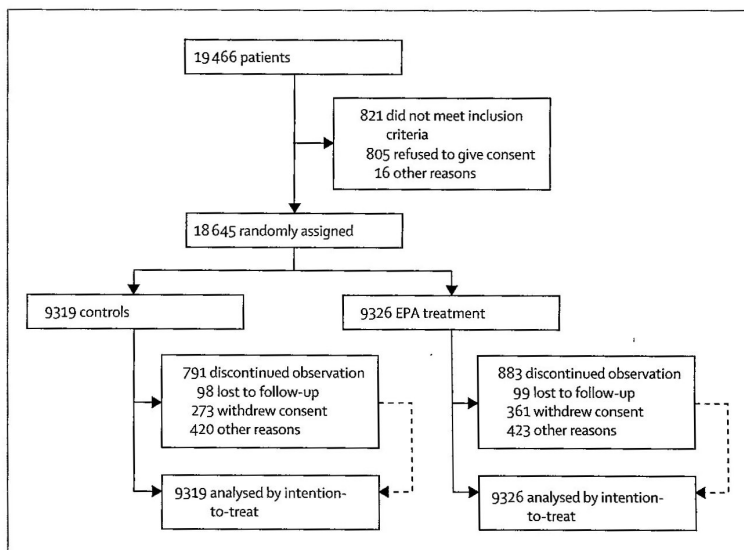


Figure 1: Trial profile

criteria), operation of the randomisation scheme, and data management. We used permuted-block randomisation with a block size of four. Blocks were assigned according to the number of participants enrolled at each centre. Patients were divided into two subgroups: one with coronary artery disease (secondary prevention; n=3664) and one without (primary prevention; n=14 981), and stratified accordingly. Patients were randomly assigned to receive EPA with statin (EPA group) or statin alone (controls). All patients first underwent 4–8 weeks of washout from antihyperlipidaemic drugs. Patients also received appropriate dietary advice.

All patients received 10 mg of pravastatin or 5 mg of simvastatin once daily as first-line treatment. These statins were available in Japan at the initiation of this study, and these doses were recommended by the Ministry of Health, Labour, and Welfare. For serious hypercholesterolaemia (defined as uncontrolled), this daily dose was increased to 20 mg pravastatin or 10 mg simvastatin. No treatment with other antihyperlipidaemic drugs was allowed during the study. EPA was given at a dose of 600 mg, three times a day after meals (to a total of 1800 mg per day). We used capsules that contained 300 mg of highly purified (>98%) EPA ethyl ester (Mochida Pharmaceuticals, Tokyo, Japan).

Local physicians monitored compliance with dietary advice and medication, and noted adverse events at every clinic visit. Clinical endpoints and severe adverse events reported by local physicians were checked by members of a regional organising committee in a blinded fashion. Then, an endpoints adjudication committee (see webappendix), consisting of three expert cardiologists and one expert neurologist, confirmed them once a year without knowledge of the

See Online for webappendix

	Controls (n=9319)	EPA treatment (n=9326)
Age (years)	61 (9)	61 (8)
Male	2908 (31%)	2951 (32%)
BMI (kg/m ²)	24 (3)	24 (3)
Cardiovascular history		
Myocardial infarction	502 (5%)	548 (6%)
Angina	1484 (16%)	1419 (15%)
CABG or PTCA	433 (5%)	462 (5%)
Risk factors		
Smoking	1700 (18%)	1830 (20%)
Diabetes	1524 (16%)	1516 (16%)
Hypertension	3282 (35%)	3329 (36%)
Serum lipid values		
Total cholesterol (mmol/L)	7.11 (0.68)	7.11 (0.67)
LDL-cholesterol (mmol/L)	4.70 (0.75)	4.69 (0.76)
HDL-cholesterol (mmol/L)	1.51 (0.44)	1.52 (0.46)
Triglyceride (mmol/L)*	1.74 (1.25-2.49)	1.73 (1.23-2.48)
Blood pressure		
Systolic (mm Hg)	135 (21)	135 (21)
Diastolic (mm Hg)	79 (13)	79 (13)
HMG CoA RI		
Pravastatin	5553 (60%)	5523 (60%)
Simvastatin	3417 (37%)	3272 (36%)
Other statin	128 (1%)	110 (1%)
Medication use		
Antiplatelet agent	1342 (14%)	1258 (13%)
Calcium antagonist	2837 (30%)	2796 (30%)
β blocker	791 (8%)	794 (9%)
Other antihypertensive agents	2424 (26%)	2366 (25%)
Nitrate	926 (10%)	863 (9%)
Hypoglycaemic agents	1126 (12%)	1081 (12%)

Data are number of patients (%) or mean (SD), unless otherwise indicated. CABG=coronary-artery bypass grafting. PTCA=percutaneous transluminal coronary angioplasty. LDL=low-density lipoprotein. HDL=high-density lipoprotein. IQR=interquartile range. HMG CoA RI=3-hydroxy-3-methylglutaryl coenzyme A reductase inhibitor. BMI=body-mass index, which is weight in kg divided by the square of height in metres. *Median (IQR).

Table 1: Baseline characteristics

See Online for webtable

treatment allocation. The study was approved by an external data and safety monitoring board, by institutional review boards at all hospitals, and by regional organising committees. The data and safety monitoring board also monitored the rate of endpoints twice during the study, in March, 2002, and March, 2004. The study was followed up until November, 2004, because both interim analyses did not reach the stopping boundary.

We sampled blood to measure serum lipid at 6 and 12 months, and then every year until the final follow-up visits. Plasma total fatty acid concentrations for all patients who gave informed consent were measured with capillary gas chromatography every year at a central laboratory.

Statistical analysis

We used a two-sided test at the 5% significance level to estimate that the number of enrolled patients would give the study a statistical power of 80% for detection of a relative reduction of 25% in the primary endpoint rate, when the EPA group was compared with controls. The event rate of the primary endpoint in the control group was assumed to be 0.58% per year for primary prevention and 2.13% per year for secondary prevention; the proportion of primary and secondary prevention strata was assumed to be 4:1. The accrual period was assumed to be 3 years with a follow-up of 5 years for all patients. All analyses were based on the intention-to-treat principle. Time-to-event data were analysed with the Kaplan–Meier method and the log-rank test. The hazard ratio and its 95% confidence interval were computed with the Cox proportional hazard model. We did subgroup analyses with a model that included an interaction term corresponding to the test for heterogeneity in effects. Changes in lipid values were compared by repeated measures of ANOVA. Data were analysed with SAS statistical software (version 8.12).

Role of the funding source

The sponsor had no role in the study design, data collection, data analysis, data interpretation, or writing of the report. The JELIS steering committee had full access to all the data in the study and had final responsibility for the decision to submit for publication.

Results

Patients were monitored for an average of 4.6 years (SD 1.1). Table 1 shows baseline characteristics of the treatment groups. The mean age of all patients was 61 years and 12 786 patients (69%) were women. Mean concentrations of total cholesterol and triglyceride were 7.1 mmol/L and 1.7 mmol/L; and mean LDL and HDL cholesterol concentrations were 4.7 mmol/L and 1.5 mmol/L, respectively. The webtable shows baseline characteristics for primary and secondary prevention subgroups. Of 3664 patients with documented coronary artery disease, 1050 had a history of myocardial infarction, 2903 of angina pectoris, and 895 angioplasty, stenting, or coronary artery bypass grafting.

Average doses were pravastatin 10.0 mg daily (SD 9.1) and simvastatin 5.6 mg daily (1.8). 16 449 (90%) patients took 10 mg pravastatin or 5 mg simvastatin. The 5-year follow-up rate was 16 971 (91%). Similar proportions of participants remained compliant in each treatment group. Study drug regimens were maintained until trial termination by 6151 (73%) of controls and in the treatment group 5883 (71%) of patients continued to take EPA and 6136 (74%) continued to take statin.

586 patients (262 assigned to EPA and 324 controls) reached the composite primary endpoint. Figure 2 shows Kaplan–Meier curves for the primary endpoint. The 5-year cumulative rate of major coronary events

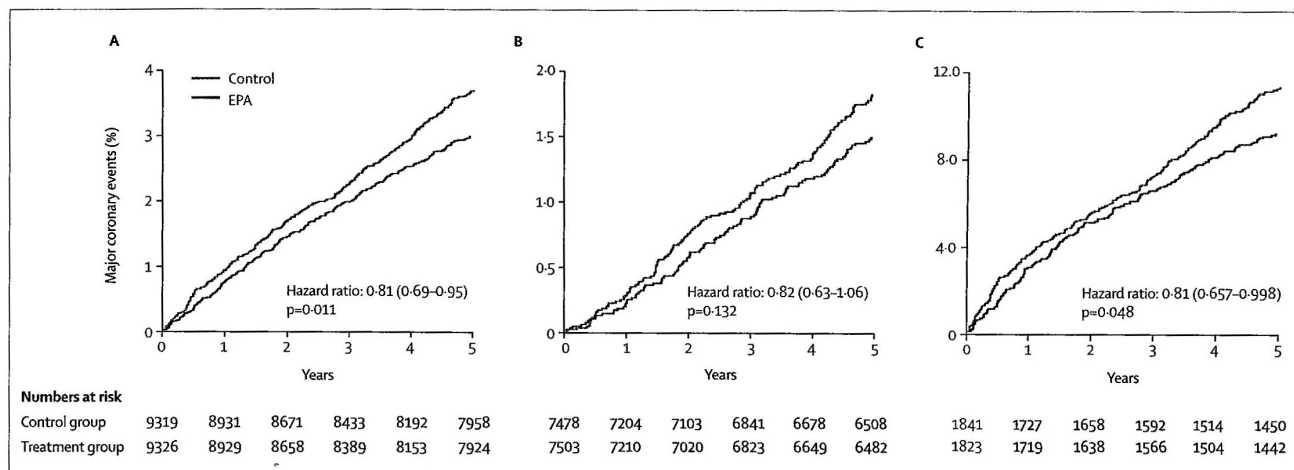


Figure 2: Kaplan-Meier estimates of incidence of coronary events in the total study population (panel A), the primary prevention arm (panel B) and the secondary prevention arm (panel C)

was 2.8% in the EPA group and 3.5% in controls, resulting in a significant relative risk reduction of 19% in the EPA group ($p=0.011$). Figure 3 shows that EPA treatment was associated with a significant reduction of 24% in the frequency of unstable angina. The occurrence of coronary death or myocardial infarction was not significantly lower (22%) in the EPA group than in controls. The frequency of fatal or non-fatal myocardial infarction was not significantly reduced (23%) in the EPA group; however, that of non-fatal coronary events (including non-fatal myocardial infarction, unstable angina, and events of angioplasty, stenting, or coronary artery bypass grafting) was significantly lower (19%) in the EPA group than in controls.

Table 2 sets out major coronary events in the two treatment groups for comparison with specific background characteristics of all populations. For example, we grouped patients according to their LDL cholesterol at baseline. The relative reduction in major coronary events risk in the EPA group was of a similar magnitude in patients with different ranges of LDL cholesterol values, suggesting that LDL cholesterol is not an important factor in reduction of risk for major coronary events.

In the primary prevention subgroup, EPA treatment was associated with a non-significant 18% reduction in major coronary events. Figure 3 shows the non-significant reductions of 18%, 21%, and 20% in coronary death or non-fatal myocardial infarction, fatal or non-fatal myocardial infarction, and non-fatal coronary events, respectively. In the secondary prevention subgroup, allocation to the EPA treatment was associated with a significant 19% reduction in major coronary events. EPA treatment was also associated with a significant 28% reduction in the incidence of unstable angina. This treatment also produced non-significant reductions of 25%, 25%, and 18% in coronary

death or myocardial infarction, fatal or non-fatal myocardial infarction, and non-fatal coronary events, respectively.

In the other analyses, stroke occurred in 162 (1.7%) controls and 166 (1.8%) patients given EPA. Figure 3 shows that the frequency of ischaemic and haemorrhagic strokes did not differ between the two treatment groups, and neither did all-cause mortality.

Figure 4 summarises the change in lipid values after treatment. Total and LDL cholesterol at the last clinic visit decreased significantly by 19% and 25% from baseline in both groups, respectively. Triglyceride decreased significantly by 9% from baseline in the EPA group and by 4% in controls ($p<0.0001$ between groups). Both treatments produced only small changes in HDL cholesterol. The fatty acid concentrations at baseline were the average values for all patients who gave informed consent in the control group ($n=8076$) and the EPA group ($n=8321$). Plasma EPA at baseline was 2.9% of total molecules of fatty acids (mol %). To assess the effect of EPA treatment, plasma fatty acid values were compared for all patients who were still compliant after 5 years of observation (controls: $n=4854$, EPA group: $n=4970$). Plasma EPA concentration and the ratio of EPA to arachidonic acid at baseline were 93 mg/L and 0.60 in controls, and 97 mg/L and 0.63 in the EPA group, respectively. Plasma EPA concentration and the ratio of EPA to arachidonic acid at year 5 were 93 mg/L and 0.59 in controls. On the other hand, plasma EPA concentration at year 5 was 169 mg/L in the EPA group, which was a 70% increase from baseline. The ratio of EPA to arachidonic acid increased two-fold from 0.63 to 1.23 in the EPA group. Similar results were reported previously.^{11,28}

Table 3 shows that a quarter of patients in the EPA group had adverse experiences related to treatment, compared with about a fifth of controls. Rates of

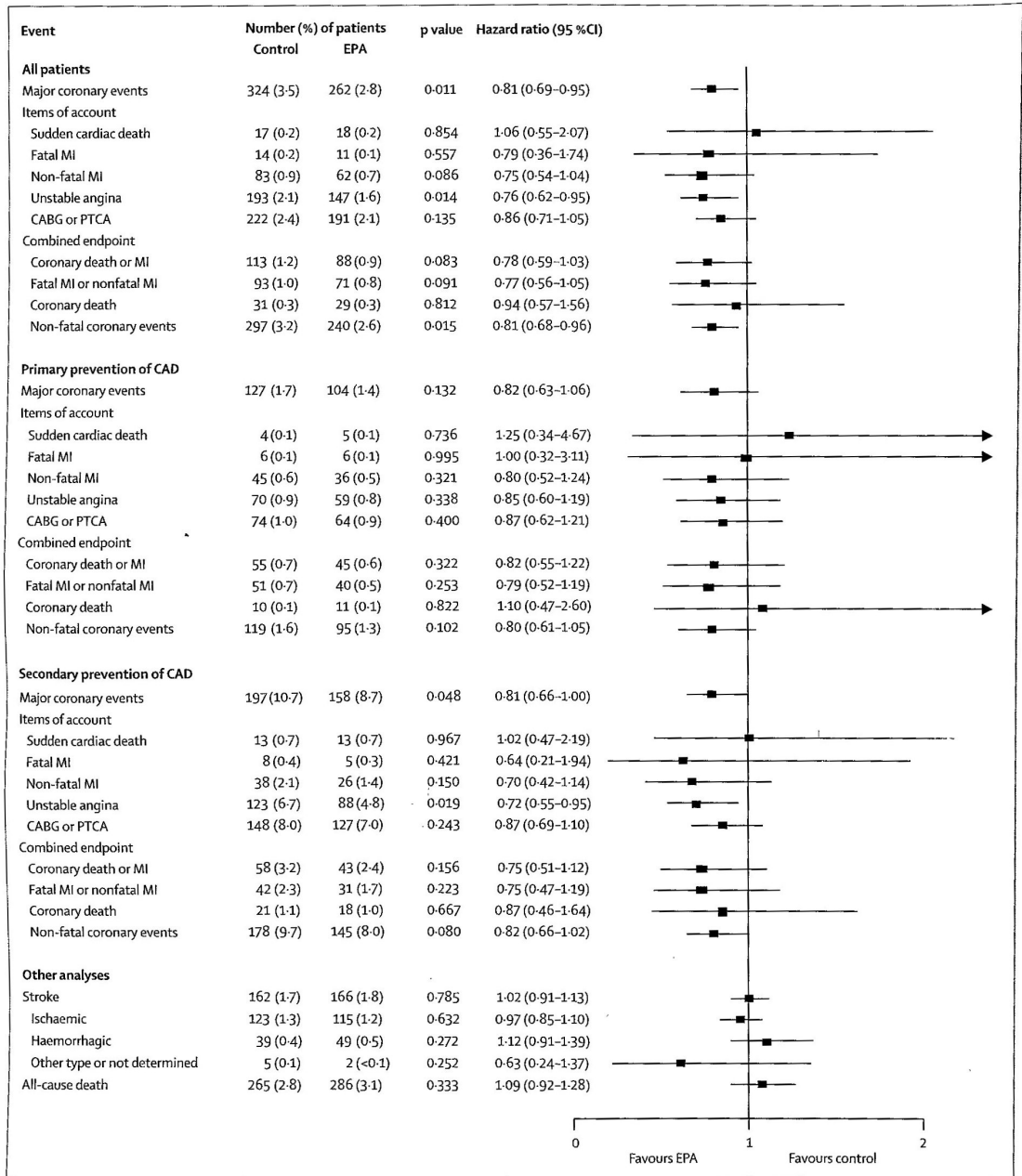


Figure 3: Estimated hazard ratios of clinical endpoints stratified by prevention stratum
MI=myocardial infarction. CABG=coronary-artery bypass grafting. PTCA=percutaneous transluminal coronary angioplasty. CAD=coronary-artery disease.

discontinuation because of treatment-related adverse events were 1087 (11.7%) in the EPA group and 673 (7.2%) in the control group. Most adverse effects attributable to EPA allocation were regarded as mild. The following factors were more common in the EPA group than in controls: abnormal laboratory data;

gastrointestinal disturbances such as nausea, diarrhoea, or epigastric discomfort; skin abnormalities such as eruption, itching, exanthema, or eczema; and haemorrhages such as cerebral and fundal bleedings, epistaxis, and subcutaneous bleeding. The frequency of new cancers did not differ.

Discussion

Our results show that EPA treatment reduced the frequency of major coronary events. The composite frequency of the primary endpoint in all patients for the EPA group was 19% lower than in controls. The risks of unstable angina and non-fatal coronary events were also substantially reduced, by 24% and 19%, respectively. The beneficial effects of EPA seemed much the same in both the secondary prevention and the primary prevention subgroups, although they were significant only in the EPA group because of greater numbers of events.

We showed that the reduced risk associated with EPA treatment was confined to non-fatal coronary events. However, the reduced risk did not apply to coronary death or sudden cardiac death in any of our study populations or secondary prevention subgroup studies. This finding differs from the results of previous interventional and observational studies.²⁹ Most observational studies report that fish intake only once or twice a week or a small intake of fish about 30–60 g per day is associated with a 30–60% reduction in the risk of fatal coronary events or sudden cardiac deaths, but not of non-fatal coronary events.^{13–57} Secondary prevention trials for coronary heart disease report that a modest intake of fatty fish (200–400 g/week) or supplemental intake of EPA plus DHA (1 g/d) reduces coronary mortality by about 20–30% in patients who have already had a myocardial infarction.^{8,9} Experimental and epidemiological studies suggest that fish oil at low doses might prevent sudden cardiac death by an antiarrhythmic effect.³⁰

Our findings accord with a cohort study by the Japan Public Health Centre, which used a food-frequency questionnaire.³¹ Iso and co-workers³¹ reported that, compared with a small intake of fish (once a week or about 20 g per day), a high intake (eight times per week, or about 180 g per day) was associated with a substantially reduced risk of coronary heart disease, especially non-fatal cardiac events, in middle-aged Japanese men and women. This finding suggests that two protective mechanisms of EPA or n-3 polyunsaturated fatty acids affect the risk of coronary events: reduction of mortality from coronary artery disease and sudden cardiac death with a low intake of n-3 polyunsaturated fatty acid, and reduction of all coronary events with a high intake of n-3 polyunsaturated fatty acids. Our patients could possibly all have had intakes of fish that were above the threshold for prevention of fatal coronary events or sudden cardiac death.⁴ One potential explanation for the strong inverse association with non-fatal coronary events in our study population, but not in other study populations of non-Japanese patients, is that EPA might affect risk only at very high levels of fish intake, such as those common in Japan.

n-3 polyunsaturated fatty acids have antiarrhythmic effects and other beneficial effects,^{32,33} such as reduced

	Control (n=9319)	EPA (n=9326)	Hazard ratio (95% CI)	Interaction p
Age (years)				
<61	117/4380 (2.7)	87/4275 (2.0)	0.76 (0.57–1.00)	0.57
≥61	207/4939 (4.2)	175/5051 (3.5)	0.84 (0.68–1.02)	
Sex				
Female	126/6411 (2.0)	109/6375 (1.7)	0.87 (0.68–1.13)	0.43
Male	198/2908 (6.8)	153/2951 (5.2)	0.76 (0.62–0.94)	
BMI				
<24	136/4404 (3.1)	109/4386 (2.5)	0.80 (0.62–1.03)	0.88
≥24	148/4021 (3.7)	123/4078 (3.0)	0.82 (0.65–1.05)	
Previous CAD				
Absent	127/7478 (1.7)	104/7503 (1.4)	0.82 (0.63–1.06)	0.95
Present	197/1841 (10.7)	158/1823 (8.7)	0.81 (0.66–1.00)	
Smoking				
Non-smoker	216/7619 (2.8)	170/7496 (2.3)	0.80 (0.66–0.98)	0.89
Smoker	108/1700 (6.4)	92/1830 (5.0)	0.78 (0.59–1.04)	
Diabetes				
Absent	221/7795 (2.8)	175/7810 (2.2)	0.79 (0.65–0.96)	0.62
Present	103/1524 (6.8)	87/1516 (5.7)	0.86 (0.65–1.15)	
Hypertension				
Absent	167/6037 (2.8)	139/5997 (2.3)	0.85 (0.68–1.06)	0.57
Present	157/3282 (4.8)	123/3329 (3.7)	0.77 (0.61–0.97)	
Total cholesterol (mmol/L)				
<7.0	167/4700 (3.6)	145/4751 (3.1)	0.86 (0.69–1.08)	0.46
≥7.0	156/4608 (3.4)	117/4550 (2.6)	0.76 (0.60–0.97)	
Triglyceride (mmol/L)				
<1.7	130/4555 (2.9)	105/4635 (2.3)	0.79 (0.61–1.02)	0.75
≥1.7	188/4648 (4.0)	153/4563 (3.4)	0.84 (0.68–1.04)	
HDL-cholesterol (mmol/L)				
<1.5	206/4316 (4.8)	154/4149 (3.7)	0.78 (0.64–0.96)	0.26
≥1.5	91/4285 (2.1)	91/4491 (2.0)	0.96 (0.72–1.28)	
LDL-cholesterol (mmol/L)				
<4.7	129/4160 (3.1)	108/4251 (2.5)	0.82 (0.64–1.06)	0.83
≥4.7	156/4157 (3.8)	131/4097 (3.2)	0.86 (0.68–1.08)	

Data are number of patients (%) or hazard ratio (95% CI). p values are for the test of heterogeneity. CAD=coronary artery disease. BMI=body-mass index, which is weight in kg divided by the square of height in metres. LDL=low-density lipoprotein. HDL=high-density lipoprotein. There is a deficit of clinical data in some patients with the events.

Table 2: Subgroup analysis

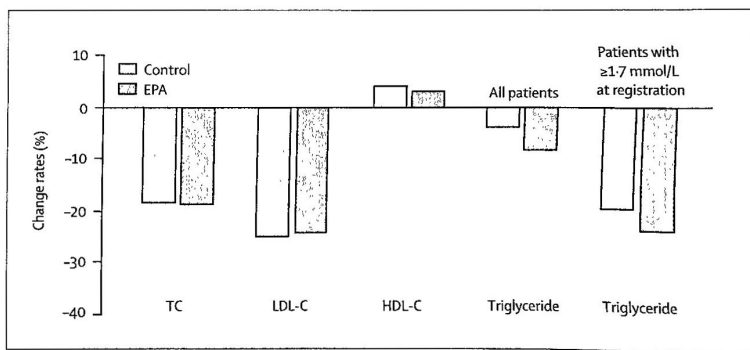


Figure 4: Percentage changes from baseline in serum lipid profile
TC=total cholesterol. LDL C=low-density lipoprotein cholesterol. HDL C=high-density lipoprotein cholesterol.

	Control (n=9319)	EPA (n=9326)	p value
Total number of adverse experiences (%)	2004 (21.7%)	2334 (25.3%)	<0.0001
Newly diagnosed cancer			
Total	218 (2.4%)	242 (2.6%)	0.26
Stomach	37 (0.4%)	53 (0.6%)	0.09
Lung	37 (0.4%)	32 (0.3%)	0.54
Colorectal	29 (0.3%)	26 (0.3%)	0.68
Breast	21 (0.2%)	16 (0.2%)	0.41
Common adverse experiences			
Pain (joint pain, lumbar pain, muscle pain)	180 (2.0%)	144 (1.6%)	0.04
Gastrointestinal disturbance (nausea, diarrhoea, epigastric discomfort)	155 (1.7%)	352 (3.8%)	<0.0001
Skin abnormality (eruption, itching, exanthema, eczema)	65 (0.7%)	160 (1.7%)	<0.0001
Haemorrhage (cerebral, fundal, epistaxis, subcutaneous)	60 (0.6%)	105 (1.1%)	0.0006
Abnormal laboratory data			
Total	322 (3.5%)	378 (4.1%)	0.03
CPK increased	116 (1.2%)	126 (1.4%)	0.52
GOT increased	38 (0.4%)	59 (0.6%)	0.03
Sugar blood level increased	27 (0.3%)	38 (0.4%)	0.17

CPK=creatine phosphokinase. GOT=glutamic oxaloacetic transaminase.

Table 3: Adverse experiences

platelet aggregation,^{10,11} vasodilation,^{12,13} antiproliferation,¹⁴ plaque-stabilisation,¹⁵ and a reduction in lipid action.^{16,17} One clinical study examined the morphology of endoarterectomised carotid specimens and showed that fish-oil supplementation increased the stability of atherosclerotic plaque.^{15,34} Atherosclerotic plaque is vulnerable to rupture because it has a thin fibrous cap that covers a large lipid core, and an increased number of inflammatory cells such as macrophages. n-3 polyunsaturated fatty acids reduce the expression of adhesion molecules on endothelial cells³⁵ and macrophages.³⁶ Dietary fish oil reduces the production of chemoattractants, including leukotriene B₄,³⁷ platelet-derived growth factor,³⁸ and monocyte chemoattractant protein-1.³⁹ These mechanisms reduce the passage of monocytes and macrophages into the plaque. Thus, EPA and DHA reduce the numbers of macrophages in the atherosclerotic plaque. Thrombus formation in the ruptured plaque leads to acute cardiovascular events.

Our study has some specific characteristics. First, we used highly purified EPA rather than n-3 polyunsaturated fatty acids or fish oils. This trial is a pharmacological intervention rather than a food-based or nutrient trial. Nutritional data are difficult to extrapolate to pharmacological intervention because fish oil contains many fatty acids other than EPA and DHA. Although both EPA and DHA are biologically active, we do not know whether they have differential effects on cardiovascular protection. Second, our population was exclusively Japanese. In Japan, death from coronary artery disease is rare and the average dietary intake of

fish is about five times higher than that in other countries.²⁸ We did not use a food-frequency questionnaire to measure fish intake; instead, at baseline, we measured plasma fatty acid concentrations that indicate fish consumption and EPA intake. Plasma EPA was 2.9 mol% at baseline in our study population, which is similar to reports by Iso and co-workers⁴⁰ that serum EPA composition was 4.1 mol% in rural Japanese and 2.4 mol% in urban Japanese; these values are much higher than those recorded in the USA, which are about 0.3 mol%.

Our trial has several limitations. First, we used an open interventional design, with blinded clinical endpoint assessment (PROBE design) to keep bias to a minimum.²³ The PROBE design has the advantages of low costs and similarity to standard clinical practice, which should make the results easily applicable in routine medical care; however, we cannot exclude the possibility of bias in some of the physician-initiated endpoints, such as coronary revascularisation and hospital treatment for unstable angina.

Second, we prescribed either pravastatin or simvastatin for all participants as the first-line treatment, in part because these were the two statins available in the Japanese market at the start of this study. We used the low doses of statins that are recommended by Japan's Ministry of Health, Labour, and Welfare. Such low doses have been reported to control serum lipid concentrations and major coronary events in Japanese patients.^{41,42} We did not use a true placebo group.

Third, this trial was substantially underpowered for analysis of subgroups. Death associated with coronary artery disease in the Japanese population is about 22–26 per 100 000 person-years, which is very low in comparison with that in the USA and northern Europe.²⁸ This difference is thought to be partly due to differences in dietary habits, including fish consumption. About two-thirds of patients in our study were women, who have an incidence of coronary events that is 2.3 times lower than that for men.⁴¹ This low ratio of men to women and the Japanese study population could have contributed to the overall low rate of coronary events, including coronary death, which failed to detect a significant effect on primary prevention outcomes.

Studies show that use of high-dose statin treatment can produce an extra reduction in cardiac events, by achievement of the maximum lowering of LDL cholesterol.⁴³ Similar benefits could arguably be obtained if the dose of statin was increased without the addition of EPA; however, we noted that EPA did not affect LDL cholesterol concentrations and that this 19% reduction in major coronary events in the EPA group was not related to serum LDL cholesterol. This finding suggests that EPA exerts its effects via mechanisms that are independent of a reduction in LDL cholesterol.

We adopted the most widely used therapeutic dose of EPA (1800 mg per day), which is approved by Japan's Ministry of Health, Labour, and Welfare. We noted no significant difference in all-cause mortality between the treatment and control groups. There was no difference in the rate of cancer and stroke, including cerebral bleeding, subarachnoidal bleeding, or both. We do not know whether lower or higher doses of EPA would produce different effects from those noted at the dose used in our study.

The beneficial effects of EPA could have stemmed from many biological effects that lead to the attenuation of thrombosis, inflammation, and arrhythmia in addition to a reduction of triglycerides. Overall, this study shows that EPA, at a dose of 1800 mg per day, is a very promising regimen for prevention of major coronary events, especially since EPA seems to act through several biological mechanisms. Because our population was exclusively Japanese, we cannot generalise our results to other populations. We need to investigate whether EPA is effective for prevention of major coronary events in hypercholesterolaemic patients without or with coronary artery disease in other countries.

Contributors

Investigators on the steering committee of the study designed, conducted, analysed, and interpreted the present study. A statistical coordination centre collected, managed, and analysed the data. All authors have participated in the data analysis and reporting stage of this manuscript. The principal investigator prepared the first draft, and all members of the JELIS Steering Committee contributed to writing, and have seen and approved the final version.

Conflict of interest statement

The committee members and investigators received no remuneration for conducting this study. M Yokoyama received travel costs from Mochida Pharmaceutical Co Ltd, Tokyo, Japan, to participate in the scientific meeting. Other authors have no conflicts of interest.

Acknowledgments

This study was supported by grants from Mochida Pharmaceutical Co Ltd, Tokyo, Japan. The results were presented in part at the late-breaking clinical trials of the American Heart Association Annual Meeting, Dallas, TX, USA, Nov, 13–16, 2005. We thank all trial participants and the large numbers of doctors, nurses, and hospital staff who made long-term commitments to the study.

References

- Kromhout D, Bosschieter EB, de Lezenne Coulander C. The inverse relation between fish consumption and 20-year mortality from coronary heart disease. *N Engl J Med* 1985; 312: 1205–09.
- Siscovick DS, Raghunathan TE, King I, et al. Dietary intake and cell membrane levels of long-chain n-3 polyunsaturated fatty acids and the risk of primary cardiac arrest. *JAMA* 1995; 274: 1363–67.
- Daviglus ML, Stamler J, Orenca AJ, et al. Fish consumption and the 30-year risk of fatal myocardial infarction. *N Engl J Med* 1997; 336: 1046–53.
- Albert CM, Hennekens CH, O'Donnell CJ, et al. Fish consumption and risk of sudden cardiac death. *JAMA* 1998; 279: 23–28.
- Albert CM, Campos H, Stampfer MJ, et al. Blood levels of long-chain n-3 fatty acids and the risk of sudden death. *N Engl J Med* 2002; 346: 1113–18.
- Hu FB, Bronner L, Willett WC, et al. Fish and omega-3 fatty acid intake and risk of coronary heart disease in women. *JAMA* 2002; 287: 1815–21.
- Lemaitre RN, King IB, Mozaffarian D, Kuller LH, Tracy RP, Siscovick DS. n-3 polyunsaturated fatty acids, fatal ischemic heart disease, and nonfatal myocardial infarction in older adults: the Cardiovascular Health Study. *Am J Clin Nutr* 2003; 77: 319–25.
- Burr ML, Fehily AM, Gilbert JF, et al. Effects of changes in fat, fish, and fibre intakes on death and myocardial reinfarction: diet and reinfarction trial (DART). *Lancet* 1989; 2: 757–61.
- GISSI-Prevenzione Investigators. Dietary supplementation with n-3 polyunsaturated fatty acids and vitamin E after myocardial infarction: results of the GISSI-Prevenzione trial. Gruppo Italiano per lo Studio della Sopravvivenza nell'Infarto miocardico. *Lancet* 1999; 354: 447–55.
- Hirai A, Terano T, Hamazaki T, et al. The effects of the oral administration of fish oil concentrate on the release and the metabolism of [14C]arachidonic acid and [14C]eicosapentaenoic acid by human platelets. *Thromb Res* 1982; 28: 285–98.
- Tamura Y, Hirai A, Terano T, et al. Clinical and epidemiological studies of eicosapentaenoic acid (EPA) in Japan. *Prog Lipid Res* 1986; 25: 461–66.
- Hamazaki T, Hirai A, Terano T, et al. Effects of orally administered ethyl ester of eicosapentaenoic acid (EPA; C20:5, omega-3) on PG12-like substance production by rat aorta. *Prostaglandins* 1982; 23: 557–67.
- Okuda Y, Kawashima K, Sawada T, et al. Eicosapentaenoic acid enhances nitric oxide production by cultured human endothelial cells. *Biochem Biophys Res Commun* 1997; 232: 487–91.
- Terano T, Shiina T, Tamura Y. Eicosapentaenoic acid suppressed the proliferation of vascular smooth muscle cells through modulation of various steps of growth signals. *Lipids* 1996; 31: 301–04.
- Kawano H, Yano T, Mizuguchi K, Mochizuki H, Saito Y. Changes in aspects such as the collagenous fiber density and foam cell size of atherosclerotic lesions composed of foam cells, smooth muscle cells and fibrous components in rabbits caused by all-cis-5, 8, 11, 14, 17-icosapentaenoic acid. *J Atheroscler Thromb* 2002; 9: 170–77.
- Nozaki S, Matsuzawa Y, Hirano K, Sakai N, Kubo M, Tarui S. Effects of purified eicosapentaenoic acid ethyl ester on plasma lipoproteins in primary hypercholesterolemia. *Int J Vitam Nutr Res* 1992; 62: 256–60.
- Ando M, Sanaka T, Nihei H. Eicosapentaenoic acid reduces plasma levels of remnant lipoproteins and prevents in vivo peroxidation of LDL in dialysis patients. *J Am Soc Nephrol* 1999; 10: 2177–84.
- Scandinavian Simvastatin Survival Study Group. Randomised trial of cholesterol lowering in 4444 patients with coronary heart disease: the Scandinavian Simvastatin Survival Study (4S). *Lancet* 1994; 344: 1383–89.
- Shepherd J, Cobbe SM, Ford I, et al. Prevention of coronary heart disease with pravastatin in men with hypercholesterolemia. West of Scotland Coronary Prevention Study Group. *N Engl J Med* 1995; 333: 1301–07.
- Downs JR, Clearfield M, Weis S, et al. Primary prevention of acute coronary events with lovastatin in men and women with average cholesterol levels: results of AFCAPS/TexCAPS. Air Force/Texas Coronary Atherosclerosis Prevention Study. *JAMA* 1998; 279: 1615–22.
- Heart Protection Study Collaborative Group. MRC/BHF Heart Protection Study of cholesterol lowering with simvastatin in 20 536 high-risk individuals: a randomized placebo-controlled trial. *Lancet* 2002; 360: 7–22.
- Grundy SM, Cleeman JI, Merz CN, et al. Implications of recent clinical trials for the National Cholesterol Education Program Adult Treatment Panel III guidelines. *Circulation* 2004; 110: 227–39.
- Mataki H, Watsuji Y, Iseki O, et al. Effect of eicosapentaenoic acid in combination with HMG-CoA Reductase Inhibitor on lipid metabolism. *J Intern Med* 1998; 5: 35–36.
- Nakamura N, Hamazaki T, Ohta M, et al. Joint effects of HMG-CoA reductase inhibitors and eicosapentaenoic acids on serum lipid profile and plasma fatty acid concentrations in patients with hyperlipidemia. *Int J Clin Lab Res* 1999; 29: 22–25.
- Durrington PN, Bhatnagar D, Mackness MI, et al. An omega-3 polyunsaturated fatty acid concentrate administered for one year decreased triglycerides in simvastatin treated patients with coronary heart disease and persisting hypertriglyceridaemia. *Heart* 2001; 85: 544–48.

- 26 Hansson L, Hedner T, Dahlöf B. Prospective randomized open blinded end-point (PROBE) study. A novel design for intervention trials. *Prospective Randomized Open Blinded Endo-Point. Blood Pressure* 1992; **1**: 113–19.
- 27 Yokoyama M, Origasa H; JELIS Investigators. Effects of eicosapentaenoic acid on cardiovascular events in Japanese patients with hypercholesterolemia: rationale, design, and baseline characteristics of the Japan EPA Lipid Intervention Study (JELIS). *Am Heart J* 2003; **146**: 613–20.
- 28 Nakamura T, Azuma A, Kuribayashi T, Sugihara H, Okuda S, Nakagawa M. Serum fatty acid levels, dietary style and coronary heart disease in three neighbouring areas in Japan: the Kumihama study. *Br J Nutr* 2003; **89**: 267–72.
- 29 He K, Song Y, Daviglus ML, Liu K, et al. Accumulated evidence on fish consumption and coronary heart disease mortality: a meta-analysis of cohort studies. *Circulation* 2004; **109**: 2705–11.
- 30 Kang JX, Leaf A. Prevention of fatal cardiac arrhythmias by polyunsaturated fatty acids. *Am J Clin Nutr* 2000; **71**: 202–07.
- 31 Iso H, Kobayashi M, Ishihara J, et al. Intake of fish and n3 fatty acids and risk of coronary heart disease among Japanese: the Japan Public Health Center-Based (JPHC) Study Cohort I. *Circulation* 2006; **113**: 195–202.
- 32 Harris WS, Park Y, Isley WL. Cardiovascular disease and long-chain omega-3 fatty acids. *Curr Opin Lipidol* 2003; **14**: 9–14.
- 33 Din JN, Newby DE, Flapan AD. Omega 3 fatty acids and cardiovascular disease—fishing for a natural treatment. *BMJ* 2004; **328**: 30–35.
- 34 Thies F, Garry JM, Yaqoob P, et al. Association of n-3 polyunsaturated fatty acids with stability of atherosclerotic plaques: a randomised controlled trial. *Lancet* 2003; **361**: 477–85.
- 35 Chen H, Li D, Chen J, Robert GJ, Saldeen T, Mehta JL. EPA and DHA attenuate ox-LDL-induced expression of adhesion molecules in human coronary artery endothelial cells via protein kinase B pathway. *J Mol Cell Cardiol* 2003; **35**: 769–75.
- 36 Miles EA, Wallace FA, Calder PC. Dietary fish oil reduces intercellular adhesion molecule 1 and scavenger receptor expression on murine macrophages. *Atherosclerosis* 2000; **152**: 43–50.
- 37 Terano T, Salmon JA, Moncada S. Effect of orally administered eicosapentaenoic acid (EPA) on the formation of leukotriene B4 and leukotriene B5 by rat leukocytes. *Biochem Pharmacol* 1984; **33**: 3071–76.
- 38 Wallace JM, Turley E, Gilmore WS, Strain JJ. Dietary fish oil supplementation alters leukocyte function and cytokine production in healthy women. *Arterioscler Thromb Vasc Biol* 1995; **15**: 185–89.
- 39 Baumann KH, Hessel F, Larass I, et al. Dietary omega-3, omega-6, and omega-9 unsaturated fatty acids and growth factor and cytokine gene expression in unstimulated and stimulated monocytes. A randomized volunteer study. *Arterioscler Thromb Vasc Biol* 1999; **19**: 59–66.
- 40 Iso H, Sato S, Folsom AR, et al. Serum fatty acids and fish intake in rural Japanese, urban Japanese, Japanese American and Caucasian American men. *Int J Epidemiol* 1989; **18**: 374–81.
- 41 Matsuzaki M, Kita T, Mabuchi H, et al. Large scale cohort study of the relationship between serum cholesterol concentration and coronary events with low-dose simvastatin therapy in Japanese patients with hypercholesterolemia: primary prevention cohort study of the Japan Lipid Intervention Trial (J-LIT). *Circ J* 2002; **66**: 1087–95.
- 42 Nakamura H, Arakawa K, Itakura H, et al. Primary prevention of cardiovascular disease with pravastatin in Japan (MEGA study): a prospective randomised controlled trial. *Lancet* 2006; **368**: 1155–63.
- 43 LaRosa JC, Grundy SM, Waters DD, et al. Intensive lipid lowering with atorvastatin in patients with stable coronary disease. *N Engl J Med* 2005; **352**: 1425–35.

ATTACHMENT 8a

Item Details

Title

Lancet (North American ed.)

LCSH and PCI subjects

[Medicine -- Periodicals](#)

MeSH Subjects

[Medicine](#)

Related Titles

The editorial contents of this edition are identical to the London edition, which has been published since 1823 and from which it adopts its numbering.

Selected articles from the London edition are also published at monthly intervals in Spanish, Italian, German, and French editions of the Lancet.

Has supplement <1995-> issued each Dec. with title: Reviews (New York, N.Y.).

Genre/Form

[Periodicals](#)

[Computer network resources](#)

[Periodical](#)

MeSH Genres

[Periodical](#)

Language

English

Format

volumes : illustrations ; 28 cm

Alternate Title

Key title: The Lancet (North American edition)

Description

Published: Baltimore, MD : Williams & Wilkins, ©1990- ; New York, NY : The Lancet Ltd., <c1997->; New York, NY : Elsevier <2005->

Title from caption.

Volumes for 1966-1989 also number the Jan.-June issues as v. 1 and the July-Dec. issues as v. 2, each year; volumes for 1990- numbered as v. 335, no. 8680-

Supplements accompany some volumes.

Publisher

Boston : Little, Brown and Co.

Publication Date

©1966-

Dates of Publication

No. 7453 (2 July 1966)-

Edition

North American ed.

Frequency

Weekly

Identifier

ISSN: 0099-5355

OCLC Number

02141608

Alma IZ record number

99142685050001452

Alma NZ Record Number

9913

ATTACHMENT 8b



Medicine MeSH Descriptor Data 2021

[Details](#)[Qualifiers](#)[MeSH Tree Structures](#)[Concepts](#)**MeSH Heading**

Medicine

Tree Number(s)

H02.403

Unique ID

D008511

RDF Unique Identifier<http://id.nlm.nih.gov/mesh/D008511>**Annotation**

medicine only as a field, profession or discipline: differentiate from DELIVERY OF HEALTH CARE where the patient is emphasized; very general; it is divided broadly into experimental medicine (= BIOMEDICAL RESEARCH) & CLINICAL MEDICINE, a specialty devoted to the diagnosis & management of human patients; / legislation & jurisprudence = LEGISLATION, MEDICAL or JURISPRUDENCE or FORENSIC MEDICINE; LEGAL MEDICINE see FORENSIC MEDICINE is also available

Scope Note

The art and science of studying, performing research on, preventing, diagnosing, and treating disease, as well as the maintenance of health.

Entry Term(s)

Medical Specialities

Medical Specialties

Medical Specialty

Specialities, Medical

Specialties, Medical

Specialty, Medical

See Also

Economics, Medical

Education, Medical

History of Medicine

Legislation, Medical

Public MeSH Note

1963; for SPECIALTIES, MEDICAL see SPECIALTIES, MEDICAL 1968-2009

History Note

1963

Entry Combination

economics:Economics, Medical

education:Education, Medical

ethics:Ethics, Medical

history:History of Medicine

legislation & jurisprudence:Legislation, Medical

Date Established

1963/01/01

Date of Entry

1999/01/01

Revision Date

2018/06/29

page delivered in 0.09s

[Copyright](#) , [Privacy](#) , [Accessibility](#) , [Site Map](#) , [Viewers and Players](#)

U.S. National Library of Medicine, 8600 Rockville Pike, Bethesda, MD 20894

National Institutes of Health, Health & Human Services, Freedom of Information Act



ATTACHMENT 8c

The Library of Congress

>> [Go to Library of Congress Online Catalog](#)



The Library has opened access to the reading rooms by appointment only. [More](#). The Jefferson Building has reopened to visitors via timed, ticketed entry. [More](#).

Help	New Search	Search History	Headings List	Start Over
◀ Previous		Next ▶		
MARC Display		Labelled Display		

LC control no.: sh2008107665

LCCN Permalink: <https://lcn.loc.gov/sh2008107665>

HEADING: Medicine Periodicals

- 000 00451cz a2200169n 450
- 001 7458312
- 005 20110729160524.0
- 008 080304|| anannbabn |n ana
- 010 __ |a sh2008107665
- 035 __ |a (DLC)383840
- 035 __ |a (DLC)sh2008107665
- 040 __ |a DLC |b eng |c DLC
- 150 __ |a Medicine |v Periodicals
- 667 __ |a Record generated for validation purposes.
- 670 __ |a Work cat.: Fa lü yu yi xue za zhi =,
- 906 __ |t 8888 |u te00 |v 0
- 953 __ |a te00

[◀ Previous](#) [Next ▶](#)

Save, Print or Email Records (View Help)	
Select Download Format:	<input type="text" value="Text (Labelled Display)"/> <input type="button" value="Press to SAVE or PRINT"/>
Email Text (Labelled Display) to:	<input type="text"/> <input type="button" value="Press to SEND EMAIL"/>

[Help](#) - [Search](#) - [Search History](#) - [Headings List](#) - [Start Over](#)



Library of Congress
URL: <https://www.loc.gov/>

Mailing Address:
101 Independence Ave,

Library of Congress Authorities
URL: <http://authorities.loc.gov/>
Library of Congress Online Catalog
URL: <https://catalog.loc.gov/>

Questions, comments, error reports: [Contact Us](#)

 S.E.
Washington, DC 20540

ATTACHMENT 8d

500 LC set includes scattered issues from the London edition. \$5 DLC
515 Volumes for 1966-1989 also number the Jan.-June issues as v. 1 and the July-Dec. issues as v. 2, each year; volumes for 1990- numbered as v. 335, no. 8680-
525 Supplements accompany some volumes.
530 Also issued online.
580 The editorial contents of this edition are identical to the London edition, which has been published since 1823 and from which it adopts its numbering.
580 Selected articles from the London edition are also published at monthly intervals in Spanish, Italian, German, and French editions of the Lancet.
580 Has supplement <1995- issued each Dec. with title: Reviews (New York, N.Y.).
588 Latest issue consulted: Vol. 349, no. 9052 (1 Mar. 1997).
650 0 Medicine \$v Periodicals.
650 6 Médecine \$v Périodiques.
650 7 Medicine. \$2 fast \$0 (OCoLC)fst01014893
650 2 Medicine. \$0 (DNLM)D008511
655 7 Periodicals. \$2 fast \$0 (OCoLC)fst01411641
655 4 Computer network resources.
655 7 Periodicals. \$2 lcgft
655 2 Periodical. \$0 (DNLM)D020492
770 0 \$t Reviews (New York, N.Y.) \$g <1995- \$w (DLC)sn 97033991 \$w (OCoLC)35825104
775 0 \$t Lancet (London, England) \$x 0140-6736 \$w (DLC)sf 82002015 \$w (OCoLC)1755507
776 08 \$i Online version: \$t Lancet (North American ed.) \$w (OCoLC)685221473
850 MCM
856 41 \$u <http://www.thelancet.com/>
856 41 \$u <http://www.sciencedirect.com/science/journal/01406736>

ATTACHMENT 9

**CURRICULUM VITAE
SYLVIA D. HALL-ELLIS**

EDUCATION

Ph.D., University of Pittsburgh, Pittsburgh, Pennsylvania, 1985
M.P.S., University of Denver, Denver, Colorado, 2014
Post Graduate Studies, University of Texas – San Antonio, Texas, 1975-1976
M.L.S., University of North Texas, Denton, Texas, 1972
B.A., Rockford University, Rockford, Illinois, 1971

PROFESSIONAL EXPERIENCE

- 1981-** **Consultant for higher education, non-profit organizations, and corporations.**
- 2002-** **Adjunct Professor, School of Information, San José State University, San José, California.** Serve as part-time faculty member teaching graduate students in technical services (cataloging, bibliographic control, classification), “core courses,” and special topics.
- 2014-2016** **Director, Grants and Resource Development, Colorado Community College System.** Provided leadership and vision to foster the continued growth of rigorous scholarship, innovative projects, and creative work for statewide system, 13 campuses, and 50 teaching sites serving 155,000 students. Responsible for leadership and ensured efficient functioning of contract and grants in compliance with state & federal requirements and successful implementation and management. Served as a subject matter expert and liaison for college Grant Directors for all issues relating to grants and subcontracts.
- 2010-2014** **Senior Grant Administrator, Morgridge College of Education, University of Denver (Colorado).** Provided leadership and vision to foster continued growth of rigorous scholarship, innovative research, and creative work in the Morgridge College of Education. Ensure that contract and grants processes function effectively and efficiently for 60 faculty and researchers with a focus on the successful progression and efficient management of grants totaling \$13M. Worked effectively and collegially with Department Chairs and Program Coordinators on operational grant-related management activities and with a broad range of internal and external constituencies. Supported the dissemination and promotion of faculty research and scholarship to outside constituents at conferences and through publications. Assisted Principal Investigators and grant project teams by coaching, mentoring, and financial management.
- 2011-2013** **Interim Director & Assistant Dean, Westminster Law Library, Sturm College of Law, University of Denver.** Planned, organized, and directed all administrative activities for the library serving students, faculty, and alumni; oversaw the employment, retention, promotion, transfer and termination of library personnel; represented the library at professional conferences and public meetings; created and promoted a climate and culture of acceptance for new programs and services, a positive high-quality image of the law library, and that reflect the organization’s values, encourage excellent performance, and reward high productivity and innovation; provided leadership and set strategic direction of the organization; ensured that the library provided excellent customer service through solution-oriented staff response to patron needs and by responsiveness and continuous improvement of the organization; promoted, developed, and maintained positive working relationships with colleagues and customers including key stakeholders and groups, higher education institutions, the legal community, other regional libraries and districts statewide, and national library organizations.
- 2007-2014** **Associate Professor, Library & Information Science, Morgridge College of Education, University of Denver (Colorado).** Served in leadership role and worked collaboratively in program, college, campus and community environments. Advised and supervised students, taught core and specialized courses at the graduate level in an integrative, student-centered learning environment. Served on LIS, College, and University committees, and maintained

working relationships with colleagues in other academic units and information professionals in the Rocky Mountain region and beyond. Served on and chair doctoral student dissertation committees. Oversaw and facilitated the College and LIS graduate student association.

- 2002-2007** **Assistant Professor, Library & Information Science, College of Education, University of Denver (Colorado).** Served as tenure-track faculty member teaching graduate students in “core courses,” resource description and access, service learning, and independent studies. Advised graduate students, participate on LIS and College committees, and serve on doctoral student dissertation committees. Oversaw and facilitated the LIS graduate student association and alumni association.
- 2000-2002** **Affiliate Faculty, Library & Information Science, College of Education, University of Denver (Colorado).** Served as part-time faculty member teaching graduate students in technical services (cataloging, bibliographic control, classification), “core courses,” and special topics. Oversaw and facilitated the LIS graduate student association and alumni association.
- 2000-2001** **Special Assistant to the Secretary’s Regional Representative, U.S. Department of Education, Region VIII, Denver, Colorado.** Served as the principal advisor and representative of the U. S. Secretary of Education’s Regional Representative (SRR). Ensured the implementation of major goals of the SRR and the Secretary. Provided leadership on behalf of the SRR in contacts with high-level officials in Region VIII requiring sensitive policy interpretation in communication with senior Department officials to solve problems and resolve issues raised by State and local education officials. Served as the primary contact for School-to-Work/Career, Children’s Health Insurance Program, and Safe and Drug-Free Schools. Delivered technical assistance to local education agencies and institutions of higher education in technology, professional development, and school construction.
- 1999-2000** **Catalog Librarian, Jefferson County Public Library, Lakewood, Colorado.** Performed original, copy cataloging and classification of library materials (English and Spanish) using standard library protocols; completed original descriptive cataloging and subject analysis; enhanced brief catalog and authority records in III.
- 1997-1999** **Development Officer, McREL International, Aurora, Colorado.** Served as senior member of corporate management team in strategic planning, development of proposals and contracts, implementation, and evaluation of new services, products, and programs for educational agencies. Provided creative leadership to corporate committees to solicit ideas, identify goals and objectives, plan, develop, present, and evaluate professional development opportunities.
- 1995-1997** **Education Specialist, Education Service Center, Region One, Edinburg, Texas.** Served as member of Administrative Cabinet team in strategic planning, development of proposals and contracts, implementation, and evaluation of telecommunications capabilities, services, products, and programs for 40 school districts serving 283,000 students in 7 counties. Provided creative leadership to regional and state committees to solicit ideas, identify strategic goals and objectives, plan, develop, present, and evaluate funding opportunities and professional development for 400 librarians.
- 1993-1996** **Assistant Professor of Library Science, Sam Houston State University, Huntsville, Texas.** Served a faculty member teaching 400 graduate students in technical services (cataloging, bibliographic control, classification), automation, and networking. Participated in distance education program and coordinated annual conference. Conducted university and Texas Library Association-funded field research focused on library collection development and academic achievement.

- 1992-1993** **Head Librarian, Rocky Mountain College of Art & Design, Denver, Colorado.**
Responsible for the daily operation, selection and acquisition of materials, formulation of policies for library operations, media center, and photography/slides archives. Designed and implemented library automation and delivery of electronic resources to college community.
- 1981-1985** **Development Officer, PRLC, Inc., Pittsburgh, Pennsylvania.** Served as senior member of corporate management team in strategic planning, development of proposals and contracts, implementation, and evaluation of new services, products, and programs for 100 institutional member organizations. Coordinated the development of proposals and contracts totaling \$4,000,000 annually. Provided creative leadership to corporate committees to solicit ideas, identify goals and objectives, plan, develop, present, and evaluate professional development opportunities.
- 1981** **Director of Library Development, Pennsylvania Department of Education, Harrisburg, Pennsylvania.** Responsible for statewide development, technical assistance, professional development, resource sharing, children's services, institutional library services, networking, and state aid program for all libraries throughout the Commonwealth. Functioned as liaison to Governor's Advisory Council, LSCA Advisory Council, District Administrators, private colleges, universities, consortia managers, and network directors. Supervised \$14,000,000 formula-based state aid program and \$3,000,000 grant awards to individual libraries, consortia, and networks.
- 1978-1981** **Assistant Director, Southern Tier Library System, Corning, New York.** Coordinated operation of system-wide programs (technical assistance, professional development, resource sharing, technical services, outreach) to 40 public libraries in 5 counties serving 500,000 residents. Solicited ideas, identified goals, sponsored, and evaluated professional development opportunities and technical assistance sessions.
- 1976-1978** **Division Librarian for Technical Services, Corpus Christi Public Libraries, Corpus Christi, Texas.** Provided leadership in acquisitions, cataloging, serials control, and processing for main library and 4 branches serving 250,000 residents. Participated as senior member of library management team. Compiled and prepared technical evaluations, reports, and statistical analyses of Division operations to measure the achievement and cost of annual goals, objectives, and staff performance.
- 1975-1976** **System Coordinator, San Antonio Major Resource Center, San Antonio, Texas.** Served as senior member of the management team for District X Office, charged to provide technical assistance, resource sharing, media services, and professional development to librarians and staff representing 30 public library jurisdictions in 21 counties serving 1,500,000 residents. Functioned as liaison to System Director, staff, and members of governing bodies with the System Board of Directors and the Texas State Library and Historical Commission. Prepared LSCA grant applications and monitored awards totaling \$1,100,000 annually.
- 1973-1975** **Bilingual Branch Librarian, San Antonio Public Library, San Antonio, Texas.** Worked as librarian providing reference, information, and readers' advisory services in branch serving 50,000 Spanish-speaking residents in southwest San Antonio. Participated in collection development and resource acquisition activities, specializing in children's work, Spanish language resources, and multicultural studies.
- 1972-1973** **Librarian, Holding Institute, Laredo, Texas.** Worked as high school librarian serving 500 boarding students in Spanish-speaking environment of private school. Provided reference, research assistance, and library instruction to students and 35 faculty members.
- 1966-1971** **Rockford Public Library, Rockford, Illinois.** Worked in branches as part-time as a Library Assistant, Clerk, and Page in city library serving 150,000 residents.

PUBLICATIONS

Editor-reviewed Monographs (Completed and in Progress)

- Hall-Ellis, Sylvia D., and Mary Beth Weber. *Contemporary Cataloging in an RDA Environment: A Handbook for Students and Practitioners*. Chicago, IL: American Library Association. Under contract & In development.
- RDA Testing: Lessons Learned and Challenges Revealed*. Sylvia D. Hall-Ellis and Robert O. Ellett, Jr., eds. Binghamton, N.Y.: Haworth, 2012. 128 p.
- Hall-Ellis, Sylvia D., Stacey L. Bowers, Christopher D. Hudson, and M. Claire Williamson. *Librarian's Handbook for Seeking, Writing, and Managing Grants*. Santa Barbara, Calif.: Libraries Unlimited, 2011. 315 p.
- Hall-Ellis, Sylvia D., with Ann Jerabek, and Merrie W. Valliant. *Contemporary Cataloging: A Handbook for Practitioners and Students*. Open access text. Athens, GA: University of Georgia System Regents, 2011. 767 p.
- Grealy, Deborah S. and Sylvia D. Hall-Ellis. *From Research to Practice: The Scholarship of Teaching and Learning in LIS Education*. Westport, Conn.: Libraries Unlimited, 2009. 175 p.
- Hall-Ellis, Sylvia D. with J. Ann Jerabek. *Grants for School Libraries*. Westport, Conn.: Libraries Unlimited, 2003. 197 p.
- Hall-Ellis, Sylvia D., Doris Meyer, Frank W. Hoffmann, with J. Ann Jerabek. *Grant Writing for Small Libraries and School Library Media Centers*. Boulder, Colo.: NetLibrary, 2001. 173 p.
- Hall-Ellis, Sylvia D., Doris Meyer, Frank W. Hoffmann, with J. Ann Jerabek. *Grant Writing for Small Libraries and School Library Media Centers*. Englewood, Colo: Libraries Unlimited, 2000. 173 p.

Editor-reviewed Chapters (Completed and In Progress)

- Hall-Ellis, Sylvia D. "Prepared to Lead: Talent, Skills, and Competencies." In *Telling the Technical Services Story*. Chicago, IL: American Library Association, 2020. In development and review.
- Hall-Ellis, Sylvia D. "Grant Writing and Sponsored Research Funding for Academic Librarians." In *The New Librarianship*. Vol. 4. Bradford Lee Eden, ed. New York: Scarecrow Press, 2015. (pp. 163-174)
- Hall-Ellis, Sylvia D. "Organizing Information: Technical Services." In *Information Services Today: An Introduction*. Sandra Hirsch, ed. Lanham, Md.: Rowman and Littlefield, 2015. (pp. 139-148)
- Hall-Ellis, Sylvia D. "Metadata, MARC, and More." In *Rethinking Technical Services, Considering Our Profession and Ourselves: What's the Future of Our Profession?* Mary Beth Weber, ed. Lanham, Md.: Rowman and Littlefield, 2015. (pp. 29-55)
- Hall-Ellis, Sylvia D., ed. "Contingent Faculty: Non-Tenure Track Faculty Series." In the *Faculty Personnel Guidelines Relating to Appointment, Promotion, and Tenure*. November 2011. Denver, Colo.: University of Denver, 2011. 42 p.
- Hall-Ellis, Sylvia D., ed. "Standard VII: Information Resources." In the *Sturm College of Law Self-Study Presentation for Accreditation by the American Bar Association*. Denver, Colo.: University of Denver, Sturm College of Law, 2011. 20 p.
- Hall-Ellis, Sylvia D. "Applying for Grants from Foundations, Corporations, or Government." In *The Volunteers' Guide to Fundraising: Raise Money for Your School Team, Library or Community Group*. 1st ed. Iona M. Bray, ed. Berkeley, Calif.: Nolo, 2011. (pp. 1-38 on accompanying disc)

- Hall-Ellis, Sylvia D., ed. "Standard III: The Faculty." In the *Library and Information Science Program Self-Study Document for Accreditation by the American Library Association*. Denver, Colo.: University of Denver, Morgridge College of Education, 2010. 22 p.
- Hall-Ellis, Sylvia D. "Library and Information Science Programs and Education for Catalogers and Metadata Specialists: Challenges for the Twenty-first Century." In *Conversations with Catalogers in the Twenty-First Century*. Elaine R. Sanchez, ed. Santa Barbara, Calif.: ABC-Clio, 2010. (pp. 226-254)
- Hall-Ellis, Sylvia D., ed. "Standard III: The Faculty." In the *Library and Information Science Program Self-Study Document for Accreditation by the American Library Association*. Denver, Colo.: University of Denver, College of Education, 2003. 15 p.
- Lesesne, Teri S. and Sylvia D. Hall-Ellis. "The Selection, Evaluation, and Integration of Culturally Authentic Texts: A Case for Making the Online Catalog Reflect Parallel Cultures." In *Literacy: Traditional, Cultural, Technological*. Pittsburgh, Pa.: International Association of School Librarianship, 1995. (pp. 110-113)
- Lesesne, Teri S. and Sylvia D. Hall-Ellis. *The Selection, Evaluation, and Integration of Culturally Authentic Texts: A Case for Making the Online Catalog Reflect Parallel Cultures*. In *Conference Proceedings of the 23rd Annual International Association of School Librarianship*, Pittsburgh, Pennsylvania, July 17-22, 1994. ERIC Document ED374816. 17 p.
- Hall-Ellis, Sylvia D. "Curriculum Folio for School Library Media Specialist Programs." In the *National Council for Accreditation of Teacher Education Self-Study for Sam Houston State University*. Huntsville, Tex.: Sam Houston State University, College of Education and Applied Science, 1994. 25 p.
- Bruntjen, Scott and Sylvia D. Hall. "Attempting to Automate: Lessons Learned Over Five Years." In *Advances in Library Administration*. Volume 4. Weston, Conn.: JAI Press, 1985. (pp. 177-192)
- Peer-Reviewed Journal Articles (Completed and In Progress)**
- Hall-Ellis-Sylvia D. "Job Design for Cataloging and Metadata Librarians." Submitted to *Journal of Library Administration*. In progress.
- Hall-Ellis, Sylvia D. "The Relationship of Situational Leadership and the Dreyfus Model of Skill Acquisition for Supervisors in Cataloging and Metadata Services." To be submitted to *Library Resources and Technical Services*. In progress.
- Hall-Ellis, Sylvia D. *The Relationship of Core Competencies on Learning Outcomes and Employers' Expectations for Catalog Librarians and Metadata Specialists*. To be submitted to the *Journal of Education for Library and Information Science*. In progress.
- Hall-Ellis, Sylvia D. "Building Cataloger Competencies: The Dreyfus Model as a Prototype for the Education and Professional Development of Catalog Librarians and Metadata Specialists in Bibliographic Control." To be submitted to the *Cataloging & Classification Quarterly*. In progress.
- Hall-Ellis, Sylvia D. "Descriptive Impressions of Entry-Level Cataloger and Metadata Specialists Positions, 2000-2016: Reflections and Trends." To be submitted to *Library Resources and Technical Services*. In progress.
- Hall-Ellis, Sylvia D. "Competencies for Metadata and Cataloging Leaders: What Employers Expect as Reflected in Position Descriptions, 2000-2016." *Cataloging & Classification Quarterly*. In progress.
- Hall-Ellis, Sylvia D. "Stackable Micro-credentials – A Framework for the Future." *The Bottom Line* 29, no. 4 (April 2016), <http://www.emeraldinsight.com/doi/pdfplus/10.1108/BL-02-2016-0006>

- Hall-Ellis, Sylvia D. "Succession Planning and Staff Development – A Winning Combination." *The Bottom Line*, 28 no. 3 (May 2015): 95-98.
- Hall-Ellis, Sylvia D. "Succession Planning and Staff Development – A Winning Combination." *The Informed Librarian Online* (September 2015),
http://www.informedlibrarian.com/featuredArticle.cfm?FILE=succession_1509.pdf
- Hall-Ellis, Sylvia D. "Nudges and Decision Making: A Winning Combination." *The Bottom Line* 28, no. 4 (July 2015): 133-136.
- Hall-Ellis, Sylvia D. "Succession Planning and Staff Development – A Winning Combination." *The Bottom Line* 28, no. 3 (May 2015): 95-98.
- Hall-Ellis, Sylvia D. "Metadata Competencies for Entry-Level Positions: What Employers Expect as Reflected in Position Descriptions, 2000-2013." *Journal of Library Metadata* 15, no. 2 (June 2015): 102-134.
- Hall-Ellis, Sylvia D. "Onboarding to Improve Library Retention and Productivity." *The Bottom Line* 27, no. 4 (October 2014).
- Hall-Ellis, Sylvia D. "Accept, Coach, and Inspire: A Formula for Success." *The Bottom Line* 27, no. 3 (July 2014): 103-106.
- Hall-Ellis, Sylvia D. *Reward Systems for Staff in Higher Education Institutions: Case Studies of 15 Higher Education Institutions in Colorado*. Capstone Thesis. Denver, Colo.: University of Denver, University College, 2014.
- Hall-Ellis, Sylvia D. "Reward Systems Promote High-Performance Work Teams Achieving Library Mission." *The Bottom Line* 27, no. 2 (April 2014): 66-69.
- Hall-Ellis, Sylvia D. "Investment in Staff Development for Seeking External Grant Funds." *The Bottom Line* 27, no. 1 (January 2014): 22-25.
- Hall-Ellis, Sylvia D. "Staff Investments for High Performance Teams." *The Bottom Line* 26, no. 4 (October 2013): 149-152.
- Hall-Ellis, Sylvia D. and Deborah S. Grealy. "Service Learning in LIS Education: A Case for Holistic Assessment." *Catholic Library World* 82, no. 3 (March 2012): 178-187.
- Hall-Ellis, Sylvia D., and Deborah S. Grealy. "The Dreyfus Model of Skill Acquisition: A Career Development Framework for Succession Planning and Management in Academic Libraries." *College and Research Libraries* (June 2012). <http://crl.acrl.org/content/early/2012/06/19/crl12-349.full.pdf+html>
- Hall-Ellis, Sylvia D. "Cataloger Competencies... What Do Employers Require?" *Cataloging & Classification Quarterly* 46, no. 3 (2008): 305-330. <http://ccq.haworthpress.com/doi:10.1080/01639370802034565>
- Hall-Ellis, Sylvia D. "Subject Access for Readers' Advisory Services: Their Impact on Contemporary Spanish Fiction in Selected Public Library Collections." *Public Library Quarterly* 27, no.1 (2007): 1-18.
<http://plq.haworthpress.com/doi:10.1080/01616840802122377>
- Hall-Ellis, Sylvia D. "Language Proficiencies among Catalogers and Technical Services Librarians." *Technical Services Quarterly* 25, no. 2 (2007) 31-47. http://tsq.haworthpress.com/doi:10.1300/J124v25n02_03
- Hall-Ellis, Sylvia D. "Cataloging Electronic Resources & Metadata: Employers' Expectations as Reflected in *American Libraries and AutoCAT*, 2000-2005." *Journal of Education for Library and Information Science* 47, no. 1 (2006): 38-51.

- Hall-Ellis, Sylvia D. "Descriptive Impressions of Managerial & Supervisory Cataloger Positions as Reflected in *American Libraries*, *AutoCAT*, and the *Colorado State Library Jobline*, 2000-2004: A Content Analysis of Education, Competencies, and Experience." *Cataloging & Classification Quarterly* 42, no. 1 (2006): 55-88.
- Hall-Ellis, Sylvia D. "Descriptive Cataloging Proficiencies among Beginning Students: A Comparison among Traditional and Virtual Class Students." *Journal of Library & Information Services in Distance Education* 2, no. 2 (2005): 13-44.
- Hall-Ellis, Sylvia D. "Descriptive Impressions of Entry-Level Cataloger Positions as Reflected in *American Libraries*, *AutoCAT*, and the *Colorado State Library Jobline*, 2000-2003." *Cataloging & Classification Quarterly* 40, no. 2 (2005): 33-72.
- Hall-Ellis, Sylvia D. and Mary Ann Berry. "The Impact of Library Resource Centers on Academic Achievement in Selected Public Schools in South Texas: Preliminary Findings." *Texas Library Journal* 71, no. 2 (Summer 1995): 94-97.
- Hall-Ellis, Sylvia D. "Visual Arts as Foundation for Successful Library Automation: The Rocky Mountain College of Art & Design Experience." *Art Reference Serials Quarterly* 4 (1994): 43-54.
- Hall, Sylvia D. *High School Databases: An Examination of Bibliographic Data Elements*. Dissertation. Pittsburgh, Pa.: University of Pittsburgh, School of Library and Information Science, 1985.

Technical Reports

- Hall-Ellis, Sylvia D. *Preparing Catalogers and Metadata Specialists Through Competency-Based Education: The San José State University iSchool Experience*. Report for the 2021 Re-Accreditation Program Presentation to the American Library Association. San José, Calif.: San José State University iSchool, 2020.
- Hall-Ellis, Sylvia D. *Colorado Community College System Grant Handbook*. Denver, Colo.: Colorado Community College System, 2015.
- Faculty Voices: Testimonials from the Frontiers of a Development Education Redesign*. Elaine DeLott Baker, Marilyn Smith, and Sylvia D. Hall-Ellis, eds. Denver, Colo.: Colorado Community College System, 2014.
- Lewis, Melanie, Jamie M. Van Leeuwen, and Sylvia D. Hall-Ellis. *Project Homeless Connect 7 Event Evaluation*. Denver, Colo.: University of Colorado Denver, 2009.
- Hall-Ellis, Sylvia D. *Grant Writing Tips and Resources*. Denver, Colo.: University of Denver, 2008-2014.
<http://portfolio.du.edu/grants>
- Hall-Ellis, Sylvia D. and Duan Zhang. *Project Homeless Connect 6 Event Evaluation*. Denver, Colo.: Center for Community Engagement and Service Learning, 2008.
- Hall-Ellis, Sylvia D. *Strategic Plan for Denver Medical Library System: Final Report*. Denver, Colo.: HealthONE and Denver Medical Library, 2008.
- Hall-Ellis, Sylvia D. and Duan Zhang. *Project Homeless Connect 5 Event Evaluation*. Denver, Colo.: Center for Community Engagement and Service Learning, 2008.
- Hall-Ellis, Sylvia D. *Strategic Plan for Denver Medical Library System: Phase Two Report*. Denver, Colo.: HealthONE and Denver Medical Library, 2007.
- Hall-Ellis, Sylvia D. and Duan Zhang. *Project Homeless Connect 4 Event Evaluation*. Denver, Colo.: Center for Community Engagement and Service Learning, 2007.

- Hall-Ellis, Sylvia D. *Strategic Plan for Denver Medical Library System: Phase One Report*. Denver, Colo.: HealthONE and Denver Medical Library, 2007.
- Hall-Ellis, Sylvia D. *Denver Public Library: Opportunities for Change*. Denver, Colo.: University of Denver, Colorado Community-Based Research Network & Metropolitan Organization of People, 2005.
- Hall-Ellis, Sylvia D. *Resources in Grant Writing for Colorado Schools and Libraries*. Sponsored by the Colorado Department of Education, Educational Telecommunications Unit, 1999. Revised September 2000.
- Hall-Ellis, Sylvia D. *Lewis & Clark Fellows Concept Paper for the Bicentennial Commemoration*. Vancouver, Wash.: Lewis and Clark Bicentennial Council, 1998.
- Hall-Ellis, Sylvia D. and Mary Ann Berry. *The Impact of Library Resource Centers on Academic Achievement in Public Schools in Texas: The Final Report*. Prepared under the sponsorship of the Research Enhancement Fund award from Sam Houston State University, the Texas Association of School Librarians, the Children's Services Round Table, and the Young Adults' Services Round Table. Huntsville, Tex.: Sam Houston State University, College of Education and Applied Science, 1997.
- Hall-Ellis, Sylvia D. *The Impact of Library Resource Centers on Academic Achievement in Selected Public Schools in Texas*. Huntsville, Tex.: Sam Houston State University, College of Education and Applied Science, 1997.
- Hall-Ellis, Sylvia D. *Planning for Educational Technology: the Distance Education Implementation Phase: An Investigation of Technology and Telecommunication Needs for Region One Education Service Center, South Texas Community College, TCI Cablevision of South Texas, Inc., Tech Prep of the Rio Grande Valley, Inc., Texas State Technical College, Centro Cultural en el Valle de Texas, McAllen Independent School District, Harlingen Consolidated Independent School District, Donna Independent School District, Edinburg Consolidated Independent School District, La Joya Independent School District, Mercedes Independent School District, Pharr-San Juan-Alamo Independent School District, Sharyland Independent School District, Easter Seal Society of the Rio Grande Valley, Inc., and McAllen Memorial Library*. Harlingen, Tex.: Tech Prep of the Rio Grande Valley, 1996.
- Hall-Ellis, Sylvia D. "Barcodes for the Texas Library Connection." Prepared under the sponsorship of the Office of Technology Services, Texas Education Agency. Austin, Tex.: TENET News and Conferences, March 1995.
- Hall-Ellis, Sylvia D. [et. al.] *Planning for Educational Technology: A Study of Future Technology Needs for the Donna Independent School District, Region One Education Region Service Center, Tech Prep of the Rio Grande Valley, Inc. South Texas Community College, and the Department of Library Science, Sam Houston State University*. Research team: Sylvia D. Hall-Ellis, Ruth Ann Riggins, Noe Torres, Patricia G. Bubb, and Michael D. Bell. Harlingen, Tex.: Tech Prep of the Rio Grande Valley, 1994. Funded through a grant award from the Texas Education Agency.
- Hall-Ellis, Sylvia D. and Mary Ann Berry. *The Impact of Library Resource Centers on Academic Achievement in Selected Public Schools in South Texas*. Huntsville, Tex.: Sam Houston State University, College of Education and Applied Science, 1993. Funded through a grant award from the Sam Houston State University Research Enhancement Fund.
- Hall-Ellis, Sylvia D., Alice Krueger, and Linda Brannan. *Thesaurus Development for National Curriculum Materials Database at the Eisenhower National Clearinghouse for Mathematics and Science Education, Columbus, Ohio*. Developed under the sponsorship of Mid-Continent Regional Educational Laboratory Corporate Library, Aurora, Colo. Washington, D.C.: National Science Foundation; Columbus, Ohio: ERIC Clearinghouse for Mathematics and Science Education, 1993.
- Hall-Ellis, Sylvia D. and Clarence L. Coffindaffer. *Partners in Progress: The 1992 Montana Library Federation Study Final Report*. Helena, Mont: Montana State Library and The Blue Bear Group, Inc., 1992.
- Hall-Ellis, Sylvia D. and Clarence L. Coffindaffer. *Montana Federation Study Identification Paper*. Denver, Colo.: The Blue Bear Group, Inc., 1992.

- Bruntjen, Scott and Sylvia D. Hall. *Recommendations on the Development of System-Wide Efforts of the Northern Waters Library Service*. Ashland, Wisc.: Northern Waters Library Service and The Blue Bear Group, Inc., 1989.
- Hall, Sylvia D. *The Iowa Union List of Serials as A Part of The Iowa Locator: Planning Document*. Des Moines, Ia.: State Library of Iowa, 1988.
- Hall, Sylvia D. *Iowa Computer-Assisted Network (ICAN Users' Manual. IBM Compatible Edition: Version 7.0*. Des Moines, Ia.: State Library of Iowa, 1988.
- Hall, Sylvia D. *Iowa Computer-Assisted Network (ICAN Users' Manual. IBM Compatible Edition: Version 5.0*. Des Moines, Ia.: State Library of Iowa, 1986.
- Hall, Sylvia D. *Iowa Computer-Assisted Network (ICAN Users' Manual. Apple MacIntosh Edition: Version 5.0*. Des Moines, Ia.: State Library of Iowa, 1986.
- Bruntjen, Scott and Sylvia D. Hall. *The District of Columbia Public Library Planning for Retrospective Conversion of Bibliographic Records and Automation Issues for the 1990's: Final Report*. Central City, Colo.: The Blue Bear Group, Inc., 1986.
- Bruntjen, Scott and Sylvia D. Hall. *The Iowa Locator: Final Report*. Central City, Colo.: The Blue Bear Group, Inc., 1986.
- Bruntjen, Scott and Sylvia D. Hall. *Discovering Resource Sharing Treasures: Accessing Pennsylvania's High School Library Collections*. Harrisburg, Pa.: State Library of Pennsylvania, Bureau of School Library Media Resources, 1985.
- Hall, Sylvia D. *Retrospective Conversion and the Completeness of Cataloging in Pennsylvania High School Libraries*. Pittsburgh, Pa.: PRLC, Inc., 1985.
- Bruntjen, Scott and Sylvia D. Hall. *The Iowa Locator*. Des Moines, Ia.: State Library of Iowa, 1985-
<http://www.statelibraryofiaowa.org/ld/silo/locator>
- Bruntjen, Scott and Sylvia D. Hall. *ICAN Analysis*. Des Moines, Ia.: State Library of Iowa, 1985.
- Bruntjen, Scott and Sylvia D. Hall. *Zebras: Bar Codes, Standards, and Library Automation*. Central City, Colo.: The Blue Bear Group, Inc., 1985.
- Hall, Sylvia D. and Scott Bruntjen. *Access Pennsylvania*. Harrisburg, Pa.: State Library of Pennsylvania, 1984-
<http://www.accesspa.org>
- Hall, Sylvia D. *Reconfiguration of the ITAC Cataloging Data Base to Machine Readable (MARC) Format*. Classified Document. Arlington, Va.: U. S. Army Intelligence and Threat Analysis Center, 1984.
- Bruntjen, Scott and Sylvia D. Hall. *South Dakota Library Automation Plan: Final Report*. Pittsburgh, Pa.: PRLC, Inc., 1982. Reprinted by the South Dakota State Library, 1983.
- Bruntjen, Scott and Sylvia D. Hall. *Altoona Automation Plan: Final Report prepared for the Altoona Area Public Library and the Altoona District Library Center*. Pittsburgh, Pa.: PRLC, 1983.
- Bruntjen, Scott, Sylvia D. Hall and Paul J. Pugliese. *College Space Utilization Study*. Pittsburgh, Pa.: PRLC, Inc., 1983.
- Hall, Sylvia D. *Pennsylvania Public Library Film Center Union Catalog Cataloging and Technical Services Procedures Manual*. Pittsburgh, Pa.: PRLC, Inc., 1982.

Hall, Sylvia D. *History of Library Development in Pennsylvania: A Review and Content Analysis of the Plans, 1955-1980*. Pittsburgh, Pa.: PRLC, Inc., 1982.

Hall, Sylvia D. *Newspapers on Microfilm: A Listing of Newspapers in Allegheny, Chemung, Schuylker, Steuben, and Yates Counties*. Ithaca, N.Y.: South Central Reference and Research Council, 1981.

Hall, Sylvia D. *OCLC/ILL Subsystem at Southern Tier Library System*. Albany, N.Y.: SUNY/OCLC Network, 1980.

Hall, Sylvia D. *Retrospective Conversion for Major Public Libraries in South Central New York State: A Technical Report*. 2 vols. Corning, N.Y.: Southern Tier Library System, 1979-1980.

Hall, Sylvia D. *The Librarian and the Mexican-American Patron in Texas*. Austin, Tex.: Texas State Library, 1978.

Other Publications

Hall-Ellis, Sylvia D., ed. *Library and Information Science Program Self-Study Document for Accreditation by the American Library Association*. St. Paul, MN: St. Catherine University, 2017. 255 p.

Hall-Ellis, Sylvia D., and Robert O. Ellett, Jr., guest editors. *RDA Testing: Lessons Learned and Challenges Revealed: A Special Issue of Cataloging & Classification Quarterly* 49, no. 7-8 (November 2011).

Hall-Ellis, Sylvia D. and Robert O. Ellett, Jr. *Fundamentals of Cataloging I: An Online ALCTS Course*. Chicago, Ill.: American Library Association, 2009.

Hall-Ellis, Sylvia D., Angela J. Kinney and Martha Ann Bace, editors. *Best Practices in Cataloging Education Identified at the 2007 ALCTS Pre-conference: A Special Issue of the Journal for Library and Information Science Education* 49, no. 2 (Spring 2008).

Hall-Ellis, Sylvia D. *Cataloging Education: A New Emphasis for the Library and Information Science Curriculum*. Presentation delivered to the ALCTS Pre-conference, 132nd Annual Conference, American Library Association, Washington, D.C., June 22, 2007. <http://www.loc.gov/aba/professional/>

Hall-Ellis, Sylvia D. "Cataloger Competencies: Do the Employers Require What the Professors Teach?" Presentation delivered to the ALCTS CCS Heads of Cataloging Discussion Group, 131st Annual Conference, American Library Association, New Orleans, Louisiana, June 26, 2006. <http://dlist.sir.arizona.edu/>

Hall-Ellis, Sylvia D., guest editor, with Deborah S. Grealy, Clara L. Sitter, and Tassos Petrou. *Library Students' Voices in Colorado: An Issue of Colorado Libraries* 31:1 (Spring 2005).

Hall-Ellis, Sylvia D., ed. *Library and Information Science Program Self-Study Document for Accreditation by the American Library Association*. Denver, Colo.: University of Denver, College of Education, 2003. 125 p. with CD-ROM.

Hall-Ellis, Sylvia D. and Deborah S. Grealy, guest editors. *Library Education in Colorado: An Issue of Colorado Libraries* 29, no. 2 (Summer 2003).

Hall-Ellis, Sylvia D., ed. *Library and Information Science Program Self-Study Document for Accreditation by the American Library Association*. Denver, Colo.: University of Denver, College of Education, 2003.

Hall-Ellis, Sylvia D. "Adaptive Furniture for the ADA-Qualified: An Investigative Study." 2001. Unpublished manuscript.

Hall-Ellis, Sylvia D. "Cataloging Electronic Serials: A Study in User Access and Article Delivery." 2001. Unpublished manuscript.

Hall-Ellis, Sylvia D. "E-books: Acquisition and Circulation Issues in Public Libraries." 2001. Unpublished manuscript.

Hall-Ellis, Sylvia D. "Authority Control and Its Importance in School Library Media Online Catalogs." 1999. Unpublished manuscript.
Hall, Sylvia D. "Cooperation Improving Service in San Antonio System." *Texas Libraries* XXXVII (Spring 1976): 27-29.

Hall, Sylvia D. "Summer is Sea Monstrously Fun!" *Texas Library Journal* L (December 1974): 224-226.

Hall, Sylvia D. "A Brief Annotated Bibliography of Non-book Materials on the Mexican American." *Texas Library Journal* XLVIII (October 1972): 213-232.

Book Reviews

ALA Book of Library Grant Money. Ann Kepler, ed. 8th ed. Chicago, IL: American Library Association, 2011. 978-0-8389-1058-0, \$175.00 [*Colorado Libraries*, June 2012]

Developing a Compensation Plan for Your Library. Paula M. Singer and Laura L. Francisco, comps. 2nd ed. Chicago, IL: American Library Association, 2009. 978-0-8389-0985-0, \$57.00 [*Colorado Libraries*, March 2012]

Frugal Librarian. Carol Smallwood, ed. Chicago, IL: American Library Association, 2011. 978-0-83891-075-7, \$42.00 [*Colorado Libraries*, February 2012]

Dowlin, Ken. *Getting the Money: How to Succeed in Fundraising for Public and Nonprofit Libraries*. Westport, Conn.: Libraries Unlimited, 2008. 978-1-59158-597-X, \$50.00 [*Colorado Libraries*, February 2009]

Lundahl, Mats. *Bebo de Cuba; Bebo Valdés y Su Mundo*, by Mats Lundahl. Traducción de Linda Oakeshott Dragó. Barcelona: RBA Libros, 2008. 978-849-86-7259-6, \$33.99 [*Críticas*, November 2008]

Bonelli, Florencia. *Marlene*, by Florencia Bonelli. Buenos Aires: Aguilar, Altea, Taurus, Alfaguara, 2008. 978-987-04-0995-3, \$24.95 [*Críticas*, October 2008]

Keret, Etgar. Traducción de Ana María Bejarano. *Pizzería Kamikaze y Otras Relatos*. México, D.F.: Editorial Sexto Piso, 2008. 968-5679-29-0, no price given [*Críticas*, September 2008]

Littauer, Marita, and Florence Littauer. *Enriquece tu Comunicación*. Miami, Fla.: Editorial Unilit, 2008. 978-0-7899-1521-4, \$11.99 [*Críticas*, August 2008]

Martínez, Guillermo. *La Muerte Lenta de Luciana B*. New York: Rayo Planeta, 2008. 978-0-06-156551-9, \$14.95 [*Críticas*, May 2008]

Matthews, Joseph R. *The Evaluation and Measurement of Library Services*. Westport, Conn.: Libraries Unlimited, 2007. 978-1-59158-532-9, \$50.00 [*Colorado Libraries*, April 2008]

Gómez-Jurado, Juan. *A Masacre de Virginia Tech: Anatomía de una Mente Torturada*. Barcelona: Ediciones El Andén, 2007. 978-84-935789-4-7, €16.50 [*Críticas*, February, 2008]

Matthews, Joseph R. *Library Assessment in Higher Education*. Westport, Conn.: Libraries Unlimited, 2007. 978-1-59158-531-2, \$45.00 [*Colorado Libraries*, February 2008]

Chacón, Inma. *La Princesa India: Cuando el Viento Azul*. México: Alfaguara, 2006. 970-770398-9, \$19.95 [*Críticas*, June 2006]

Vargas Llosa, Mario. *Israel/Palestina: Paz o Guerra Santa*. fotogs. by Morgana Vargas Llosa. Spain/U.S.: Aguilar: Santillana, 2006. 84-03-09691-7, paper, \$19.95 [*Críticas*, May 2006]

- Findlay, Diane. *Digging into Dewey*. Fort Atkinson, Wisc.: Upstart Books, 2005. 978-1-932146-18-9, \$16.95 [Colorado Libraries, May 2006]
- Pequeñas Resistencias 4: Antología del Nuevo Cuento Norteamericano y Caribeño*. Menéndez, Ronaldo, Ignacio Padilla & Enrique del Risco, eds. Madrid: Páginas de Espuma, 2005. 84-95642-59-X, paper, \$36.95 [Críticas, April 2006]
- Rueda, André. *Vengo a Salvar a España: Biografía de Un Franco Desconocido*. Madrid: Nowtilus (Investigación Abierta), 2005. photogs., bibliog. 84-9763-202-8, paper, \$23.95 [Críticas, March 2006]
- Becerra, Ángela. *El Penúltimo Sueño*. 1st ed. Barcelona: Planeta, 2005. 84-08-05795-2, \$25.95. [Críticas, January 2006]
- Aguilar Camín, Héctor. *La Conspiración de la Fortuna*. 1st ed. México: Planeta, 2005. 970-37-0368-2, \$19.95 [Críticas, October 2005]
- México en Sus Libros*. Enrique Florescano with Pablo Mijangos, editors & compilers. 1st ed. México, D.F.: Taurus Aguilar, 2004. 968-19-0783-3, \$16.95 [Críticas, September 2005]
- Historia Económica de México*. Coordinator, Enrique Semo. México: Universidad Nacional Autónoma de México, Editorial Oceano de México, 2004. 13 vols. 970-32-0805+3 (obra completa), \$9.25 each [Críticas, August 2005]
- Czarnowsky, Christyne A. and Michael H. Williams. *Managing Your Wired Workforce: A Practical Guide*. Denver, Colo.: Bradford Pub., 2003. 1-883726-79-4, \$24.95 [Colorado Libraries, 2004]
- Abraham Lincoln*. Colección Grandes Biografías. Madrid: Edimat Libros, 2003. 84-8403-858-0, €4.95 [Críticas, 2004]
- Alponte, Juan María. *Colón: el Hombre, el Navegante, la Leyenda*. México, D.F.: Aguilar, 2003. 968-19-1260-8, \$16.95 [Críticas, 2004]
- Olcese Salvatecci, Alfieri. *Cómo Estudiar con Éxito: Técnicas y Hábitos Para Aprender Major*. México, D.F.: Alfaomega Grupo Editor, 2002. 970-15-0764-9 [Críticas, 2003]
- Mujeres Como Islas: Antología de Narradoras Cubanas, Dominicanas, Puertorriqueñas*. Edición: Olga Marta Pérez, Thelma Jiménez, Andrés Blanco D., eds. Santo Domingo, República Dominicana: Ediciones Ferilibro, 2002. 959-209-419-5 [Críticas, 2003]
- Tibol, Raquel. *Los Muros de Diego Rivera: Universidad Autónoma Chapingo*. México, D.F.: Editorial RM, Universidad Autónoma Chapingo, 2002. 968-5208-08-5 [Críticas, 2003]
- Lindsay-Poland, John. *Emperors in the Jungle: the Hidden History of the U.S. in Panama*. Durham, N.C.: Duke University Press, 2003. 0-8223-3098-9, \$18.95 [Críticas, 2003]
- Kaplan, Allison G. and Ann Marlowe Riedling. *Catalog It! A Guide to Cataloging School Library Materials*. Worthington, Ohio: Linworth Pub., 2002. 1-58683-014-7, \$44.95 [Colorado Libraries, 2002]
- Bardach, Ann Louise. *Cuba Confidential: Love and Vengeance in Miami and Havana*. New York: Random, 2002. 0-375-50489-3, \$25.95 [Library Journal, 2002]
- Swan, James. *Fundraising for Libraries: 25 Proven Ways to Get More Money for Your Library*. New York: Neal Schuman, 2002. 1-55570-433-6, \$69.95 [Colorado Libraries, 2002]
- Puig de Lange, Victoria. *Sol Con Agua*. Nashville, Tenn.: Editorial Vistazo/Ediciones Reio Negro, 2002. 0-9724506-0-2, \$17.75 [Críticas, 2002]

- The Encyclopedia of Latin American Politics*. Edited by Diana Kapiszewski; assistant editor, Alexander Kazan. Westport, Conn.: Oryx Press, 2002. 1-57356-306-4, \$74.95 [*Library Journal*, 2002]
- Vargas Lizano, Isabel. *Y Si Quieres Saber de Mi Pasado*. Con la colaboración de J.C. Vales. Madrid: Santillana Ediciones Generales, S.L., 2002. 84-03-09278-4, \$18.95 [*Críticas*, 2002]
- Ruy Sánchez, Alberto. *Los Jardines Secretos de Mogador: Voces de Tierra*. México, D.F.: Alfaguara, S.A., 2001. 968-19-0879-1, \$16.95 [*Críticas*, 2002]
- Chávez, Ricardo and Celso Santajuliana. *El Final de las Nubes*. Barcelona: RBA Libros, S.A., 2001. 84-7901-760-0, \$11.95 [*Críticas*, 2002]
- The Power of Language / El Poder de la Palabra: Selected Papers from the Second REFORMA National Conference*. Edited by Lillian Castillo-Speed and the REFORMA National Conference Publications Committee. Englewood, Colo.: Libraries Unlimited, 2001. 1-563089459, \$35.00 [*Colorado Libraries*, 2001]
- Martínez, Rubén. *Crossing Over: A Mexican Family on the Migrant Trail*. Metropolitan: Holt, 2001. 0-8050-4908-8, \$26.00 [*Library Journal*, 2001]
- Guevara, Ernesto "Che." *The African Dream: the Diaries of the Revolutionary War in the Congo*. Translated from the Spanish by Patrick Camiller. With an introduction by Richard Gott and a foreword by Aleida Guevara March. New York: Grove Press, 2001. 0-8021-3834-9, \$13.00 [*Library Journal*, 2001]
- Cooper, Gail and Garry Cooper. *New Virtual Field Trips*. Englewood, Colo.: Libraries Unlimited, 2001. 1-56308-887-8, \$27.50 [*Colorado Libraries*, 2001]

NATIONAL SERVICE & PROFESSIONAL AFFILIATIONS

American Library Association, Life Member

Association for Library Collections & Technical Services
Cataloging, Classification, and Metadata Section
ALCTS Editorial Board, Member, 2015-2019
Committee on Cataloging: Description and Access, Member, 2008-2012
Test Site for RDA, Manager, 2009-2011
Nominating Committee, Member, 2007-2008
Committee for Education and Training of Catalogers, Chair, 2006-2007, Member, 2003-2007
Competencies & Education for a Career in Cataloging Interest Group, Chair, 2010-2012; Member, 2010-
President's Program Committee, 2015-2016
Education Committee, Member, 2005-2007
Task Force on Competencies and Education for a Career in Cataloging, Chair, 2007-2009
2007 Annual Meeting Pre-conference, "What They Don't Teach in Library School: Competencies,
Education and Employer Expectations for a Career in Cataloging," Steering Committee Chair
Fundraising Committee, Member, 2004-2006
Office of Diversity
Committee on Diversity, Chair, 2010-2011
Diversity Research Advisory Committee, Member, 2009-2010
Spectrum Scholar Mentor, 2009
Diversity Grants Review Committee, Member, 2007, 2010, 2012
Office of Statistics and Research
Research and Statistics Committee, Member, 2005-2007; Intern, 2003-2005
Library Research Round Table
Membership Committee, 2019-2021
Board of Directors, Member At-Large, 2009-2012
Member, 2003-
Office of Accreditation
Accreditation Panel Member (training completed 2004)
Accreditation Review Panel Member (training completed 2004)

REFORMA, Life Member

National Board of Directors, 2005-2013
National Fundraising Chair, 2005-2013
National Recruiting and Mentoring Committee, 2008-2010
Colorado Chapter, Secretary, 2004-2005
Colorado Chapter Liaison to National Board of Directors, 2004-2013

American Association of Law Libraries (AALL), Life Member

Online Audiovisual Catalogers Association (OLAC)

Colorado Association of Law Librarians (CoALL)

American Association of University Women

Association for Library and Information Science Education (ALISE)

University of Denver ALISE Representative, 2003-2008; 2010-2011
Membership Advisory Committee, 2007-2010
Technical Services Education Special Interest Group, 2003-
Garfield Doctoral Dissertation Award Reviewer, 2012
Garfield Doctoral Dissertation Scholarship Reviewer, 2014

American Association of University Professors (AAUP), 2006-

**American Grant Writers Association, 2014-
Grant Professionals Institute, 2016-
National Grants Management Association, 2014-**

Grant Reviewer (National and Regional Team Leader), U.S. Department of Education, 1998-
Grant Reviewer, Broadband Technologies Opportunity Program, U.S. Department of Commerce, 2009
Grant Reviewer, Institute of Museum and Library Services, 1998-2000
Grant Reviewer, Colorado Department of Education, 2014-
Grant Reviewer, Colorado State Library, 1998-
Grant Reviewer, American Association of Community Colleges *Working Connections* program, 1999
Peer Reviewer, *Journal for Library and Information Science Education*, 2005-
Peer Reviewer, *Journal of Library Metadata*, 2009
Peer Reviewer, *International Journal of Library and Information Science*, 2011
Regular Columnist, *The Bottom Line*, 2013-2016
Book Reviewer, *Library Journal*, 2001
Book Reviewer, *Críticas*, 2002-2009
Book Reviewer, *Colorado Libraries*, 2000-2012

REGIONAL SERVICE & PROFESSIONAL AFFILIATIONS

Mountain Plains Library Association

Professional Development Grants Committee, Member, 2005-2006
Professional Development Policy and Guidelines Sub-committee Chair, 2006

Colorado Association of Libraries

“Student Voices” Column Editor, *Colorado Libraries*, 2005-2006
Conference Planning Committee, Member, 2002
Technical Services and Automation Division, Chair, 2002-2003; Member, 2000-
Academic Libraries Division, Peer Review Conference Papers Committee, Member, 2007-2009
Education Committee, Member, 1988-1993
Diverse Populations Committee, Member, 2009-2013

SERVICE TO THE UNIVERSITY OF DENVER

Center for Teaching and Learning Faculty Advisory Board, 2007-2008; 2010-2012
Center for Community Engagement and Service Learning Advisory Board, 2007-2012
Faculty Senate
Executive Committee, 2008-2013
Nominations, Rules & Credentials Committee, Chair, 2008-2013; Member 2007-2013
Appointment, Promotion, and Tenure Revision Committee, 2010-2012
Grievance Policy Committee Member, 2007-2010
Law Library Director Search Committee Chair, 2012-2013
PROF Grant Review, College Representative to the University Review Team, 2006, 2008
Project Homeless Connect Evaluations, Principal Investigator, 2006-2009
University Technology Council, 2007-2009
University of Denver Hyde Interviews for Incoming Freshmen, 2003-2012

SERVICE TO THE MORGRIDGE COLLEGE OF EDUCATION

Appointment, Tenure & Review Committee
Member, voting, 2003-2005; 2007- 2009
Chair, Clinical Faculty Promotion & Tenure Policy Subcommittee, 2008-2009
Member, Community Engagement Subcommittee, 2007-2009
Member, Tenure Review Panel, 2003
Advancement and Alumni Relations Committee, Chair, 2003-2007; Member, 2002-2007
College Building Committee Member, 2004-2010
College of Education Student Association, Faculty Advisor, 2004-2007; 2009-2010
Faculty Senator, 2007-2013
Research and Scholarship Committee, Chair, 2008-2009; Member, 2002-2003, 2008-2009

Research and Grant Mentoring Committee, Chair, 2009-2010
Research Task Force Member, 2010-2012
Search Committee Member, Assistant Professor for Curriculum & Instruction, 2010-2011
Workload Task Force Member, 2010-2011

SERVICE TO THE LIBRARY & INFORMATION SCIENCE PROGRAM

Library and Information Science Student and Alumni Association, Faculty Advisor, 2002-2008
ALA Student Chapter, Faculty Advisor, 2005-2008
Beta Phi Mu Phi Chapter, Faculty Advisor, 2004-2014
Steering Committee Member, Accreditation by the American Library Association, 2001-2004
Search Committee Member, Associate Professor for LIS, 2006
Search Committee Chair, Assistant Professors for LIS, 2003, 2005, 2006, 2007
Search Committee Ex-Officio Member, Director for LIS, 2004

SERVICE TO SAM HOUSTON STATE UNIVERSITY

Rio Roundup: South Texas Literature Conference, Conference Coordinator, 1993
External Relations, Fund Raising, Grants Committee, Chair, 1993-1995
Advisory Council Committee, Chair, 1993-1995
Students, Admissions, and Advisement Committee, Chair, 1994
Institutional Effectiveness Committee, Member, 1993-1995

SERVICE TO THE COLLEGE OF EDUCATION AND APPLIED SCIENCE

Faculty Affairs Committee, Member, 1993-1995
Curriculum Committee, Member, 1993-1995
Continuing Education Committee, Member, 1993-1995

SERVICE TO THE COMMUNITY

French Teacher & Student Exchange with Laon, France, Monarch High School, Boulder Valley School District
(Boulder, Colorado), 2017-
Denver/Boulder Games 2022, Board of Directors, Secretary-Treasurer, 2015-2018
United Way Campaign Committee, College of Education, 2006
Arapahoe County, Election Judge for the County Clerk and Recorder, 2000-2005
Arthritis Foundation, Rocky Mountain Chapter, Certified Educator & Trainer, 1999-2008
Bonfils Blood Center, Silver Level Donor, 2000-2016
Denver Museum of Natural History, Docent, 1992
Tech Prep of the Lower Rio Grande Valley, Inc. (Harlingen, Texas) Board of Directors, 1995-1997
Executive Committee, 1996-1997; Chair, Development Committee, 1995-1997; Chair, Fiscal Agency
Committee, 1995-1996; Chair, Colleges and Universities Committee, 1996-1997
Gilpin County (Colorado) Public Library Board of Trustees, 1986-1989; Vice President, 1987-1989
City of Central (Colorado) Economic Development Committee, 1987-1989
Columbine Family Health Centers, Inc. (Nederland and Black Hawk, Colorado) Board of Directors, 1988-1989

CERTIFICATION

Permanent Public Librarian Certificate - Pennsylvania, New York, Texas
Westlaw Expert Witness, 2008-
Certified Grant Writer®, 2016-

AWARDS AND HONORS

Advanced Practitioner for Service Learning and Community Engagement, University of Denver, 2011
Platinum Star Alumnae, College of Information, Library Science & Technologies, University of North Texas, 2009
Commendation for Integration of Technologies in Teaching & Learning Environment, University of Denver, 2006
Outstanding Adjunct Faculty Member Award, College of Education, University of Denver, 2002
Beta Phi Mu, Pi, University of Pittsburgh, 1985
Alpha Lambda Sigma, University of North Texas, 1972

Albert Nelson Marquis Lifetime Achievement Award, Who's Who in America
Who's Who in American Women
Who's Who of Women Executives
Dictionary of International Biography
Who's Who in the East
Who's Who in the South and Southwest
Who's Who in the World
Who's Who of Online Professionals
Who's Who in Library and Information Science
2,000 Notable Women
Who's Who of Emerging Leaders
Who's Who in Professional and Executive Women
Who's Who in American Education
International Who's Who of Professional and Business Women
International Leaders in Achievement
International Educator of the Year
Who's Who in Finance and Industry
Who's Who in Finance and Business

Invited International and National Conference Presentations

- Driscoll, Margaret, Christy Confetti Higgins, Scott Brown, and Sylvia D. Hall-Ellis. *A View from Within: Open House Tour of Three Canvas Core Courses*. Presentation to be delivered at the School of Information, San José State University Professional Development Seminar, San José, California, October 17, 2019.
- Hall-Ellis, Sylvia D. *Invest in Me -- I'm Your Future: Succession Planning for Libraries*. Keynote presentation delivered at the ALCTS President's Symposium, Boston, Mass., January 8, 2016.
- Seidel, Kent E. and Sylvia D. Hall-Ellis. *Making Grants Work for You: Strategies for Doctoral Students and Early Career Scholars*. Presentation delivered at the University Council for Educational Administration, Early Career Scholars Session, Indianapolis, Ind., November 9, 2013.
- Hall-Ellis, Sylvia D. *So You Want to be a Manager; Leadership Skills and Competencies for Technical Services Managers and Administrators*. Presentation delivered at the 138th Annual Conference, American Library Association, Chicago, Ill., June 29, 2013.
- Seidel, Kent E., Karen S. Riley, Lyndsay Agans, Susan Korach, and Sylvia D. Hall-Ellis. *Making Grants Work for You (Instead of Just Working for Grants)*. A panel discussion delivered at the University Council for Educational Administration, Early Career Scholars Session, Denver, Colo., November 17, 2012.
- Hall-Ellis, Sylvia D. *After the Great TS Reorganization: The Westminster Law Library*. Presentation delivered at the 137th Annual Conference, American Library Association, Anaheim, Calif., June 23, 2012.
- Hall-Ellis, Sylvia D. *Conversations with Catalogers in the 21st Century*. A panel discussion sponsored by the ALCTS Competencies for a Career in Cataloging Interest Group, delivered at the 137th Annual Conference, American Library Association, Anaheim, Calif., June 22, 2012.
- Hall-Ellis, Sylvia D., moderator. *Mid-Career Leaders Program*. A panel discussion sponsored by the ALA Committee on Diversity delivered at the 136th Annual Conference, American Library Association, New Orleans, La., June 26, 2011.
- Hall-Ellis, Sylvia D., moderator. *Diversity Town Hall*. A community conversation sponsored by the ALA Committee on Diversity delivered at the 136th Annual Conference, American Library Association, New Orleans, La., June 24, 2011.
- LaBarre, Kathryn, Sylvia D. Hall-Ellis, Karen Anderson, Rick Hasenyager, Christopher Cronin, and Penny Baker. *Briefings from RDA Test Participants*. A panel discussion delivered at the Midwinter Conference, American Library Association, San Diego, Calif., January 7, 2011.
- Miksa, Shawne, Marjorie Bloss, and Sylvia D. Hall-Ellis. *Educating the Next Generation of Catalogers: Teaching RDA*. A panel discussion delivered at the 97th Annual Conference, Association for Library and Information Science Education, San Diego, Calif., January 7, 2011.
- Hall-Ellis, Sylvia D., Robert Maxwell, John Hostage, and George Prager. *RDA Panel: What Cataloging Managers Need to Know*. Presentation delivered at the 103rd Annual Conference, American Association of Law Librarians, Denver, Colo., July 12, 2010.
- Hall-Ellis, Sylvia D. and Stacey L. Bowers. *Catalogers in the RDA Environment: Skill Sets, Expectations and Challenges*. Presentation delivered at the 103rd Annual Conference, American Association of Law Librarians, Denver, Colo., July 11, 2010.
- Hall-Ellis, Sylvia D. *Comfortable in Your Cataloging and Metadata Specialist Skin? Or, So You Want to Hire a Cataloger*. Presentation delivered to the ALCTS Research Group at the 134th Annual Conference, American Library Association, Chicago, Ill., July 11, 2009.

- Perez, Megan, Sylvia D. Hall-Ellis, and Denise Anthony. *From Novice to Expert: Collaboration for Succession Planning*. A “hot topic” presentation delivered at the 14th ACRL Conference, Seattle, Wash., March 13, 2009.
- Hall-Ellis, Sylvia D. *Cataloging in the RDA Environment: Skill Sets, Expectations and Challenges*. Presentation delivered to the ALCTS Research and Publications Committee at the Midwinter Conference, American Library Association, Denver, Colo., January 24, 2009.
- Hall-Ellis, Sylvia D. *LIS Cataloging Education for the 21st Century: Expectations and Challenges*. A panel discussion held at the 95th Annual Conference, Association for Library and Information Science Education, Denver, Colo., January 23, 2009.
- Chu, Clara, Sylvia D. Hall-Ellis, and Mark Winston. *The Doctoral Degree & Building a Career*. A panel discussion delivered at the ALA Office of Diversity Spectrum Doctoral Fellows E.J. Josey Leadership Institute, Midwinter Conference, American Library Association, Denver, Colo., January 20, 2009.
- Hall-Ellis, Sylvia D. and Robert O. Ellett, Jr. *Fundamentals of Cataloging Course: An Overview of the ALCTS Online Course*. Presentation delivered to the ALCTS Big Heads Group, 133rd Annual Conference, American Library Association, Anaheim, Calif., June 30, 2008.
- Hall-Ellis, Sylvia D. *Employers’ Expectations for Technical Services Librarians: What We Don’t Know*. Presentation delivered to the ALCTS Research and Publications Committee Program, 133rd Annual Conference, American Library Association, Anaheim, Calif., June 28, 2008.
- Hall-Ellis, Sylvia D., Virginia R. Maloney, and Mary Stansbury. *Institutional Responses to Engaged Scholarship: The Carnegie Foundation Engaged University Classification at Two Universities*. Presentation delivered to the 94th Annual Conference, Association for Library and Information Science Education, Philadelphia, Pa., January 11, 2008.
- Hall-Ellis, Sylvia D. *Puzzles, Problems, and Predicaments*. Presentation delivered to the ALCTS Research Discussion Group, 132nd Annual Conference, American Library Association, Washington, D.C., June 23, 2007.
- Hall-Ellis, Sylvia D. *Cataloging Education: A New Emphasis for the Library and Information Science Curriculum*. Presentation delivered to the ALCTS Pre-conference, 132nd Annual Conference, American Library Association, Washington, D.C., June 22, 2007. <http://www.loc.gov/catdir/cpsocareercat.html>
- Ellett, Jr., Robert O. and Sylvia D. Hall-Ellis. *Copy Cataloging Done Smarter*. Presentation delivered to the International Conference on Interdisciplinary Information Sciences and Technologies (InSciT2006), October 25-28, 2006.
- Hall-Ellis, Sylvia D. and Robert O. Ellett, Jr. *Cooperative Cataloging: Challenges and Opportunities for Defense Libraries*. Presentation delivered to the 1st Annual Conference of Defense Libraries, Spanish Ministry of Defense, Madrid, Spain, July 7, 2006.
- Hall-Ellis, Sylvia D. *Cataloger Competencies: Do the Employers Require What the Professors Teach?* Presentation delivered to the ALCTS CCS Heads of Cataloging Discussion Group, 131st Annual Conference, American Library Association, New Orleans, La., June 26, 2006.
- Grealy, Deborah S. and Sylvia D. Hall-Ellis. *From Research to Practice: The Scholarship of Teaching and Learning in LIS Education*. Presentation delivered to the at the 92nd Annual Conference, Association for Library and Information Science Education, San Antonio, Tex., January 18, 2006.
- Hall-Ellis, Sylvia D. *Employers’ Expectations for Entry-Level Catalogers: What Position Announcement Data Indicate*. Research paper delivered to the Technical Services Special Interests Group, 91st Annual Conference, Association for Library and Information Science Education, Boston, Mass., January 12, 2005. <http://dlist.sir.arizona.edu/>

Hall-Ellis, Sylvia D. *Common Errors in MARC Records Prepared by LIS Students: What Does It Mean?* Research paper delivered to the ALCTS CCS Cataloging Norms Discussion Group, Mid-Winter Conference, 90th American Library Association, San Diego, Calif., January 10, 2004.

Hall-Ellis, Sylvia D. *Visual Arts as Foundation for Successful Library Automation: The Rocky Mountain College of Art & Design Experience*. Paper delivered at the 6th Annual Conference of Higher Education, Charleston, S. C., 1993.

Hall, Sylvia D. *Design Elements for Bibliographic Databases: An Overview*. Paper delivered at the 14th Online National Conference, New York, 1983.

Invited Regional Conference Presentations

Hall-Ellis, Sylvia D., Hudson, Christopher D., Brittany Cronin, and Kathryn Michaels. "The Colorado Law Project: Meeting the Public's Need for Legal Information." Panel discussion delivered at the Mountain Plains Library Association Conference, Billings, Mont., April 9, 2011.

Grealy, Deborah S. and Sylvia D. Hall-Ellis. *Education for Information Professionals in New Mexico: Library & Information Science Graduate Education at the University of Denver*. Presentation delivered at the New Mexico Library Education Summit, Las Vegas, N.M., September 26, 2005.

Hall-Ellis, Sylvia D. *Public Library-School Library Partnerships*. Presentation delivered at the 3rd Annual Colorado Association of Libraries Conference with the Mountain Plains Library Association, Denver, Colo., October 22, 2004.

Hall-Ellis, Sylvia D. *Learn All You Can – Educational Partnership Opportunities for the Lewis and Clark Bicentennial Commemoration*. Paper delivered at the 3rd Annual Lewis and Clark Bicentennial Council National Planning Conference, Bismarck, N.D., April 26, 1998.

Invited State Conference Presentations

Grealy, Deborah S. and Sylvia D. Hall-Ellis. *Academic Library Leadership Changes: Using Succession Planning and Mentoring*. Presentation delivered at the Minnesota Library Education Conference, St. Cloud, Minn., October 10, 2013.

Hall-Ellis, Sylvia D., Merrie Valliant, and Melissa Powell. *RDA: What Is It and What Do You Need To Do With It At Your Library?* Presentation delivered at the Colorado Library Consortium Spring Conference, Ft. Morgan, Colo., April 26, 2013.

Hall-Ellis, Sylvia D. *Service Learning and the Library & Information Science Graduate Education at the University of Denver*. Presentation delivered at the 4th LEADS Scholars Orientation, Denver, Colo., August 5, 2009.

Hall-Ellis, Sylvia D. *Service Learning: Enhancement to Library & Information Science Graduate Education at the University of Denver*. Presentation delivered at the 3rd LEADS Scholars Orientation, Denver, Colo., June 2008.

Hall-Ellis, Sylvia D. *Law Librarianship: A Community Conversation*. Sponsored by the Colorado Association of Law Libraries. Paper delivered at the Colorado Supreme Court Library, Denver, Colo., May 14, 2008.

Hall-Ellis, Sylvia D. *Opportunities and Challenges in Law Librarianship: A Community Conversation*. Presentation delivered at the Sturm College of Law, Denver, Colo., November 7, 2007.

Hall-Ellis, Sylvia D. *Grant Writing Resources for Nursing Professionals*. Presentation delivered at the Presbyterian / St. Luke's Health One Medical Center 1st Annual Research Symposium, Denver, Colo., October 17, 2007.

- Hall-Ellis, Sylvia D. *Project Homeless Connect 4 Event Evaluation – Insights and Lessons Learned*. Presentation delivered at the Homelessness Research Symposium: What is DU Doing about Homelessness in Denver, Denver, Colo., September 14, 2007.
- Hall-Ellis, Sylvia D. *Service Learning and the Library & Information Science Graduate Education at the University of Denver*. Presentation delivered at the 2nd LEADS Scholars Orientation, Denver, Colo., August 10, 2007.
- Hall-Ellis, Sylvia D. *Education for Information Professionals in a Digital Environment: Library & Information Science Graduate Education at the University of Denver*. Presentation delivered at the 15th Spring Mountains and Plains Parapros Conference, Denver, Colo., February 24, 2007.
- Hall-Ellis, Sylvia D. *Public Library Service to Spanish-Speaking and Latino Residents in Denver: A Case Study*. Presentation delivered at the 4th Annual Colorado Association of Libraries Conference, Denver, Colo., November 10, 2005.
- Hall-Ellis, Sylvia D. *Education for Information Professionals in a Digital Environment: Library & Information Science Graduate Education at the University of Denver*. Presentation delivered at the 14th Annual Mountains and Plains Parapros Conference, Aurora, Colo., July 29, 2005.
- Hall-Ellis, Sylvia D. *Educational Opportunities: Library & Information Science Graduate Education at the University of Denver*. Presentation delivered at the 13th Annual Mountains and Plains Parapros Conference, Centennial, Colo., August 6, 2004.
- Hall-Ellis, Sylvia D. *Library Education & Training: Focus on the West: An LIS Faculty Member's Personal Response*. Presentation delivered at the 1st Annual Colorado Association of Libraries Conference, Keystone, Colo., October 18, 2002.
- Hall-Ellis, Sylvia D. *Grant Writing for School Librarians*. Presentation delivered at the 2002 Annual Colorado Education Media Association Conference, Colorado Springs, Colo., February 15, 2002.
- Hall-Ellis, Sylvia D. *Grants – Opportunities for the Future*. Paper delivered at the Southeast Regional Accountability Annual Conference, Lamar, Colo., November 12, 1998.
- Hall-Ellis, Sylvia D. *The Texas Library Connection and Interlibrary Loan: An Experiment in Resource Sharing*. Paper delivered at the Texas Computer Educators' Association Annual Conference, Austin, Tex., February 6, 1997.
- Hall-Ellis, Sylvia D. *Finding Grant Sources on the Internet: A Guide for Librarians*. Paper delivered at the 2nd Annual Institute for School Library Personnel, Pharr-San Juan-Alamo North High School, Pharr, Tex., July 29, 1996.
- Hall-Ellis, Sylvia D. *Mathematical and Logical Thinking: A Critical Intelligence*. Paper delivered at the 3rd Annual Paraprofessional Conference at the University of Texas - Pan American, Edinburg, Tex., March 8, 1996.
- Hall-Ellis, Sylvia D. *Cataloging Trends and Issues: Update Session*. Paper delivered at the 1st Annual Institute for School Library Personnel, South Texas Community College, McAllen, Tex., July 19, 1995.
- Hall-Ellis, Sylvia D. *Grant Writing: Tips and Encouragement for School Librarians*. Paper delivered at the 1st Annual Institute for School Library Personnel, South Texas Community College, McAllen, Tex., July 18 and 19, 1995.
- Hall-Ellis, Sylvia D. *How to Become an Expert Grant Writer*. Paper delivered at the 3rd Annual High School Principals' Academy, South Padre Island, Port Isabel, Tex., June 19, 1995.

- Hall-Ellis, Sylvia D. *Texas Library Study: Results from Regions I and II*. Paper delivered at the 3rd Annual Technology Conference, Texas A&M University, College Station, Tex., November 18, 1994.
- Hall-Ellis, Sylvia D. *Academic Achievement and Middle School Students*. Paper delivered at the 8th Annual Young Adult Conference, Sam Houston State University, Huntsville, Tex., November 5, 1994.
- Hall-Ellis, Sylvia D. *Multimedia Resources for Library Leaders*. Paper delivered at the Institute for Librarians in A Multicultural Environment, Sam Houston State University, Huntsville, Tex., June 10, 1994.
- Hall-Ellis, Sylvia D. *Finding the Resource: Empowering the User, or, the Case for Curriculum Based Subject Access to Learning Resource Center Collections*. Paper delivered at the 81st Annual Texas Library Association Conference, Corpus Christi, Tex., April 12-16, 1994.
- Hall-Ellis, Sylvia D. and William H. Pichette. *Sam Houston State University Makes Use of OCLC/AMIGOS Collection Analysis CD*. Paper delivered at the 81st Annual Texas Library Association Conference, Corpus Christi, Tex., April 12-16, 1994.
- Hall, Sylvia D. *Funding and Library Development in Pennsylvania: A Symbiotic Relationship*. Paper delivered at the Annual Graduate Student Colloquia, University of Pittsburgh, School of Library and Information Science, 1982.
- Hall, Sylvia D. *Leadership for Public Library Trustees*. Paper delivered for the Trustees Division, Pennsylvania Library Association Annual Conference, Lancaster, Penn., 1981.

Seminar and Professional Development Presentations

- Taylor, Meredith, and Sylvia D. Hall-Ellis. *Talent Management and Succession Planning*. ALCTS eForum, held March 22, 2017.
- Hirsh, Sandra, Heather O'Brien, Michelle Holschuh Simmons, Michael Krasulski, and Sylvia D. Hall-Ellis. *Information Services Today: An Introduction. Part 3: Information Services: Roles in the Digital Age*. Rowan and Littlefield in partnership with Library Journal webinar, recorded February 5, 2015.
- Hall-Ellis, Sylvia D. and Jennifer Sweda. *Copy Cataloging in an RDA Environment*. ALCTS eForum, held May 14 and 15, 2013.
- Hall-Ellis, Sylvia D. *Law Librarianship: A Community Conversation*. Sponsored by the Colorado Association of Law Libraries, presented at the Colorado Supreme Court Library, Denver, Colo., May 14, 2008.
- Hall-Ellis, Sylvia D. and Beatrice Z. Gerrish. *Reading and Libraries: Recent Research in Reading*. Presentation at the Ricks Center for Gifted Education, Denver, Colo., March 4, 2008.
- Hall-Ellis, Sylvia D. *Cataloger Competencies: Do the Employers Require What the Professors Teach?* Presentation for the School of Library and Information Science, San José State University, February 12, 2008.
- Hall-Ellis, Sylvia D. and Robert O. Ellett, Jr. *Cooperative Cataloging: Rules, Tools, and Conventions for Building a Multi-institutional Catalog*. Sponsored for the Spanish Ministry of Defense, Madrid, Spain, July 10, 2006.
- Hall-Ellis, Sylvia D. *Cash for Kids: Grant Writing Opportunities for Youth Services Librarians*. Sponsored by the Colorado Young Adult Librarians; presented at Bemis Memorial Library, Littleton, Colo., November 13, 2002.
- Hall-Ellis, Sylvia D. *MARC Records and Authority Control: Planning for Bibliographic Database Migration*. Sponsored and held at the Douglas County Public Library, Castle Rock, Colo., May 28, 2002.

- Hall-Ellis, Sylvia D. *Grant Writing: A Refresher for Librarians*. Sponsored by Library and Information Science Program, College of Education, University of Denver; presented at University Center at Chaparral, August 12, 2000.
- Hall-Ellis, Sylvia D. *Shaking the Money Tree – Basic Grant Writing for Colorado Educators*. Sponsored by the Office of Educational Telecommunications of the Colorado Department of Education.
Pikes Peak Community College, Colorado Springs, Colo., November 16, 1998.
Pueblo School District 60, Pueblo, Colo., November 12, 1998.
University of Northern Colorado, Greeley, Colo., November 10, 1998.
United Technology Educational Partnership, Grand Junction, Colo., November 9, 1998.
- Hall-Ellis, Sylvia D. *Cataloging Multimedia, Kits, Globes and Map Materials in USMARC*. Sponsored and hosted by Region One Education Service Center, Edinburg, Tex., April 24, 1997 and December 12, 1996.
- Hall-Ellis, Sylvia D. *New Standards for School Library Media Centers*. Sponsored and hosted by Region One Education Service Center, Edinburg, Tex., April 15, 1997.
- Hall-Ellis, Sylvia D. *The School Library Media Specialist in the 21st Century: Visions for the Future*. Sponsored and hosted by Pharr-San Juan-Alamo Independent School District, Pharr, Tex., April 4, 1997.
- Hall-Ellis, Sylvia D. *Cataloging Sound Recordings and Audio Materials in USMARC*. Sponsored and hosted by Region One Education Service Center, Edinburg, Tex., March 20, 1997 and November 21, 1996.
- Hall-Ellis, Sylvia D. *Evaluating and Selecting CD-ROMS for School Library Media Collections*. Sponsored and hosted by Region One Education Service Center, Edinburg, Tex., March 18, 1997.
- Hall-Ellis, Sylvia D. *Cataloging Audiovisual Materials in USMARC*. Sponsored and hosted by Region One Education Service Center, Edinburg, Tex., February 27, 1997, November 7, 1996 and October 24, 1996.
- Hall-Ellis, Sylvia D. *Introduction to Dialog: Basic Searching Strategies*. Sponsored and hosted by Region One Education Service Center, Edinburg, Tex., February 14, 1997.
- Hall-Ellis, Sylvia D. *Cataloging Books in USMARC*. Sponsored and hosted by Region One Education Service Center, Edinburg, Tex., January 30, 1997, October 10, 1996, September 26, 1996 and August 8, 1996.
- Hall-Ellis, Sylvia D. *Advanced Internet Searching Techniques for Librarians*. Sponsored and hosted by Region One Education Service Center, Edinburg, Tex., January 21, 1997.
- Hall-Ellis, Sylvia D. *Texas Library Connection Full-Text Searching*. Sponsored and hosted by Region One Education Service Center, Edinburg, Tex., December 13, 1996 and October 25, 1996.
- Hall-Ellis, Sylvia D. *Developing Evaluation Strategies for Grants and Proposals*. Sponsored and hosted by Region One Education Service Center, Edinburg, Tex., December 10, 1996.
- Hall-Ellis, Sylvia D. *Developing Needs Assessment for Grants and Proposals*. Sponsored and hosted by Region One Education Service Center, Edinburg, Tex., November 12, 1996.
- Hall-Ellis, Sylvia D. *Texas Library Connection Union Catalog Searching*. Sponsored and hosted by Region One Education Service Center, Edinburg, Tex., November 8, 1996 and September 6, 1996.
- Hall-Ellis, Sylvia D. *Grant Resources on the Internet*. Sponsored and hosted by Region One Education Service Center, Edinburg, Tex., October 23, 1996.
- Hall-Ellis, Sylvia D. *Preparing a Response to the Telecommunications Infrastructure Fund Board: Needs Assessment, Professional Development Framework, and Evaluation Strategies*. Sponsored and hosted by Region One Education Service Center, Edinburg, Tex., October 16, 1996.

- Hall-Ellis, Sylvia D. *Texas Library Connection: Building the Districtwide Bibliographic Database*. Sponsored and hosted by Mercedes Independent School District, Mercedes, Tex., September 13, 1996 and August 8, 1996. Sponsored and hosted by Los Fresnos Consolidated Independent School District, Los Fresnos, Tex., August 12, 1996.
- Hall-Ellis, Sylvia D. *School-to-Work and Special Education: An Inclusive Partnership for Success*. Sponsored and hosted by the Office of Special Education, Region One Education Service Center, Edinburg, Tex., September 11, 1996.
- Hall-Ellis, Sylvia D. *Telecommunications Infrastructure Fund Board: An Overview of Funding for Secondary Schools*. Sponsored and hosted by Region One Education Service Center, Edinburg, Tex., August 31, 1996.
- Hall-Ellis, Sylvia D. *Cataloging Books, Multimedia, and Realia in USMARC*. Sponsored and hosted by Edinburg Consolidated Independent School District, Edinburg, Tex., August 6, 1996.
- Hall-Ellis, Sylvia D. *Internet Resources for Grant Writers*. Sponsored and hosted by Region One Education Service Center, Edinburg, Tex., April 20, 1996.
- Hall-Ellis, Sylvia D. *Enhanced Grant Writing Skills for Mathematics Educators: Writing Skills for Campus Teams*. Sponsored and hosted by the Office of General Education, Region One Education Service Center, Edinburg, Tex., March 22, 1996.
- Hall-Ellis, Sylvia D. *Internet Resources for Grant Writers*. Sponsored and hosted by the College of Education and Applied Science, Sam Houston State University, Huntsville, Tex., March 9, 1996.
- Hall-Ellis, Sylvia D. *Grant Writing for Mathematics Educators: A Development Process for Campus Teams*. Sponsored and hosted by the Office of General Education, Region One Education Service Center, Edinburg, Tex., March 4, 1996.
- Hall-Ellis, Sylvia D. *Shaking the Money Tree: Preparing Successful Technology Grant Applications*. Sponsored and hosted by the Office of Technology and Media Services, Region One Education Service Center, Edinburg, Tex., February 29, 1996 and April 29, 1996.
- Hall-Ellis, Sylvia D. *District-wide Technology Planning: Technical Assistance for the Texas Education Agency Initiative*. Sponsored and hosted by the Office of Technology and Media, Region One Education Service Center, Edinburg, Tex., February 2, 1996.
- Hall-Ellis, Sylvia D. *Enhanced Grant Writing Skills*. Sponsored and hosted by Pharr-San Juan-Alamo Independent School District, Pharr, Tex., January 27, 1996.
- Hall-Ellis, Sylvia D. *United States Copyright Act of 1976, Video Transmissions, Computer Software and the Internet*. Sponsored and hosted by the Office of Technology and Media, Region One Education Service Center, Edinburg, Tex., January 24, 1996.
- Hall-Ellis, Sylvia D. *The Grant Writing Development Process*. Sponsored and hosted by Pharr-San Juan-Alamo Independent School District, Pharr, Tex., January 20, 1996.
- Hall-Ellis, Sylvia D. *MARC Cataloging of Materials for Library Media Centers*. Sponsored and hosted by the Office of Media Services, Region One Education Service Center for the Donna Independent School District, Donna, Tex., August 17, 1995.
- Hall-Ellis, Sylvia D. *Classification*. Sponsored by AJ Seminars, Rockville, Maryland; presented at University Hilton Hotel, Houston, Tex., May 10, 1995.

- Hall-Ellis, Sylvia D. *Library Technical Services*. Sponsored by AJ Seminars, Rockville, Maryland; presented at University Hilton Hotel, Houston, Tex., April 26, 1995.
- Hall-Ellis, Sylvia D. *Grant Writing: An Introduction for Public School Administrators*. Sponsored and hosted by the Office of Administrative Services, Region One Education Service Center, Edinburg, Tex., April 19, 1995.
- Hall-Ellis, Sylvia D. *The School Library Media Specialist in the 21st Century: Visions for the Future*. Sponsored and hosted by the United Independent School District, Laredo, Tex., March 31, 1995.
- Hall-Ellis, Sylvia D. *Using USMARC*. Sponsored by AJ Seminars, Rockville, Maryland; presented at University Hilton Hotel, Houston, Tex., March 29, 1995.
- Hall-Ellis, Sylvia D. *Library Media Center Policies and Guidelines: How to Prepare for School Board Adoption*. Sponsored and hosted by the Office of Technology and Media Services, La Joya Independent School District, La Joya, Tex., March 10, 1995.
- Hall-Ellis, Sylvia D. *Developing District-wide Policies and Guidelines for Library Media Centers*. Sponsored and hosted by the Office of Technology and Media Services, La Joya Independent School District, La Joya, Tex., January 10, 1995.
- Hall-Ellis, Sylvia D. *MARC Cataloging of Audiovisual Materials for Library Media Centers*. Sponsored and hosted by the Office of Library Media and Technology Services, Cypress-Fairbanks Independent School District, Houston, Tex., December 1, 1994.
- Hall-Ellis, Sylvia D. *The School Library Media Specialist in the 21st Century: Visions for the Future*. Sponsored and hosted by United Independent School District, Laredo, Tex., October 14, 1994.
- Hall-Ellis, Sylvia D. *The School Library Media Specialist in the 21st Century: Visions for the Future*. Sponsored and hosted by the Laredo Independent School District, Laredo, Tex., October 7, 1994.
- Hall-Ellis, Sylvia D. *MARC Cataloging for Library Media Centers*. Sponsored by the Office of Library Media and Technology Services, Cypress-Fairbanks Independent School District, Houston, Tex., October 5, 1994.
- Hall-Ellis, Sylvia D. *Jump to the Head of the Class: Undergraduate Library Resources Available at Sam Houston State University*. Sponsored by the Office of the Associate Vice President for Student Services, Sam Houston State University, Huntsville, Tex., October 4, 1994.
- Hall-Ellis, Sylvia D. *CD-ROMs - 1994's Newest and the Best for Secondary Level Media Centers*. Sponsored and hosted by Clear Lake Independent School District, Houston, Tex., June 3, 1994.
- Hall-Ellis, Sylvia D. *Introduction to Classification*. Sponsored by AJ Seminars, Rockville, Maryland; presented at Holiday Inn, Market Center, Dallas, Tex., May 18, 1994.
- Hall-Ellis, Sylvia D. *Basic Descriptive Cataloging*. Sponsored by AJ Seminars, Rockville, Maryland; presented at University Hilton Hotel, Houston, Tex., May 4, 1994.
- Hall-Ellis, Sylvia D. *Shaking the Money Tree - Part II: Writing Successful Grant Applications*. Sponsored by Donna Independent School District, Donna, Texas, and Region One Education Service Center Edinburg, Texas; presented at South Texas Community College Library, McAllen, Tex., April 29, 1994.
- Hall-Ellis, Sylvia D. *Using MARC*. Sponsored by AJ Seminars, Rockville, Maryland; presented at Holiday Inn, Market Center, Dallas, Tex., April 6, 1994.
- Hall-Ellis, Sylvia D. *Automated Authority Control*. Sponsored by AJ Seminars, Rockville, Maryland; presented at University Hilton Hotel, Houston, Tex., March 23, 1994.

Sylvia D. Hall-Ellis, Ph.D.
Page 26 of 50

Hall-Ellis, Sylvia D. *Automating the District School Library Media Centers: Choices and Opportunities*. Sponsored and hosted by the Office of Technology and Library Media Services, Fort Bend Independent School District, Sugar Land, Tex., March 4, 1994.

Hall-Ellis, Sylvia D. *Shaking the Money Tree - Part I: Preparing Successful Grant Applications*. Sponsored and hosted by the Office of Library Media Services, Donna Independent School District, Donna, Tex., February 4, 1994.

GRADUATE COURSES TAUGHT

San José State University, School of Library and Information Science

- INFO 249 – Advanced Cataloging and Classification (Fall 2015, 2016; Summer 2016)
- INFO 287 – Special Topics in Cataloging and Classification (Spring 2017, 2018, 2019, 2020, 2021; Fall 2020, 2021)
- LIBR 248 – Beginning Cataloging and Classification (Summer 2002, 2003, 2004, 2005, 2006)
- LIBR 249 – Advanced Cataloging and Classification (Summer 2003; Fall 2014; Summer 2015)

University of Denver, University College

- Grant Writing Certificate Seminar for Non-Profit Organizations (Fall 2020, 2021; Spring 2021)

University of Denver, Morgridge College of Education

- HED 5991 – Grant Writing in Higher Education (Spring 2011)
- LIS 4010 – Organization of Information (Fall 2002, 2003, 2004, 2005, 2006, 2009; Winter 2005; Spring 2004, 2005, 2006)
- LIS 4020 – Professional Principles and Ethics (Summer 2000)
- LIS 4040 – Management of Libraries and Information Centers (Fall 2010; Spring 2003, 2009 (DS); Winter 2005)
- LIS 4070 – Cataloging and Classification (Winter 2008, 2009, 2010, 2011, 2012; Fall 2009 (DS))
- LIS 4321 – Collection Management (Spring 2005)
- LIS 4326 – LIS Research (Winter 2009 (DS); Spring 2009 (DS))
- LIS 4350 – Adult Materials and Services (Summer 2006, 2009)
- LIS 4379 – Social Sciences Resources (Spring 2009)
- LIS 4400 – Cataloging and Classification (Spring 2000, 2001; Winter 2002, 2003, 2004, 2005, 2006, 2007, 2008, 2009; Summer 2005, 2006 – course renumbered LIS 4070, September 2007)
- LIS 4401 – Descriptive Cataloging (Winter 2001; Spring 2002, 2003, 2006, 2007, 2008, 2009; Summer 2005)
- LIS 4402 – Subject Cataloging (Spring 2001, 2009; Summer 2005, 2006, 2007, 2008)
- LIS 4403 – Classification Schemes (Fall 2007, 2008, 2009 (DS))
- LIS 4405 – Authority Control (Winter 2009)
- LIS 4510 – Materials and Services for Children (Winter 2004; Summer 2005)
- LIS 4620 – Grant Writing and Fundraising (Summer 2000, 2002, 2004, 2010; Winter 2006; Fall 2006, 2007, 2008, 2009)
- LIS 4700 – Seminar in Technical Services (Fall 2001)
- LIS 4700 – Seminar in Public Libraries (Summer 2002)
- LIS 4804 – Management of Electronic Records (Spring 2004; Fall 2005)
- LIS 4902 – Capstone Projects (Winter 2003, Spring 2008, 2009, 2011)
- LIS 4910 – Independent Study (every quarter Winter 2000 through Spring 2011)
- LIS 4920 – Service Learning (every quarter Summer 2004 through Spring 2011)
- RMS 4954 – Grant Writing (Summer 2013, 2014)
- RMS 4959 – Content Analysis Methodology (Spring 2015)
- QRM 4978 – Grant Writing (Summer 2011, 2012)

Rutgers University, School of Communication and Information

- SC&I 522 – Cataloging and Classification (Summer 2013)

University of Arizona, College of Behavioral and Social Sciences

- LIS 602 – Cataloging and Classification (Summer 1995)
- LIS 612 – Advanced Online Search and Retrieval (Summer 1995)

Sam Houston State University, College of Education & Applied Science

- LIS 532 - Cataloging and Classification (Fall 1993, 1994, 1995)
- LIS 563 - Advanced Cataloging and Classification (Summer 1994)
- LIS 567 - Research Methods (Spring 1994, Spring 1995)
- LIS 591 - Educational Technology (Spring 1994, 1995)
- LIS 596 - Networking and Computer Technologies in Education (Fall 1993, Summer 1994, Fall 1995)

Dissertations at the University of Denver

Bowers, Stacey L. *Library Anxiety of Law School Students: A Study Utilizing the Multidimensional Library Anxiety Scale*. Chair, May 5, 2010.

Fattor, Melissa M. *Student Engagement Differences by Ethnicity and Scale for Ninth Grade Students*. Chair, November 1, 2010.

Fulton, Roseanne. *A Case Study of Culturally Responsive Teaching in Middle School Mathematics*. Kent Seidel, Chair, June 18, 2009, Outside Chair.

Grealy, Deborah S. *Tribes and Territories in Library and Information Studies Education*. Bruce Uhrmacher, Chair, June 10, 2008, Committee Member.

McCord, J. Michael. *Developing a Standard of Care for Educational Malpractice*. Chair, April 15, 2011.

Priebe, Sarah J. *Distinguishing Effects of Domain and General Knowledge on Passage Fluency and Comprehension*. Jan Keenan, Chair. July 21, 2011, Outside Chair.

Snyder-Mondragon, Sandra M. *Institutional Factors that Impact the Retention of Graduate Students of Color in Schools of Library and Information Science: A Metaregression of Accredited Library School Statistics on Student Retention and Graduation Rates*. Kathy Green, Chair, July 24, 2009, Committee Member.

Taylor, Karen Pickles. *Effective Teaching*. Elinor Katz, Chair, July 15, 2009, Outside Chair.

Thompson, Jennifer. *Distinguishing a Western Women's College: A History of the Curriculum and Student Experience at Colorado Women's College*. Edith W. King, Chair, July 16, 2010, Committee Member.

Walker, Emelda. *Influence of Organizational Factors on Job Satisfaction of Disability Service Providers at Postsecondary Institutions*. Chair, April 29, 2010.

Dissertation Proposals at the University of Denver

Bowers, Stacey L. *Library Anxiety of Law School Students: A Study Utilizing the Multidimensional Library Anxiety Scale*. Chair, November 5, 2009.

McCord, J. Michael. *Developing a Standard of Care for Educational Malpractice*. Edith W. King, Chair. April 23, 2010.

Thompson, Jennifer. *History of Colorado Women's College*. Edith W. King, Chair, October 30, 2008. Committee Member.

Walker, Emelda. *Influence of Organizational Factors on Job Satisfaction of Disability Service Providers at Postsecondary Institutions*. Chair, July 21, 2009.

Dissertations at Other Institutions

Rodríguez-Mori, Howard. *The Information Behavior of Puerto Rican Immigrants to Central Florida, 2003-2009: Grounded Analysis of Six Case Studies Use of Social Networks during the Migration Process*. Kathleen Burnett, Chair, April 10, 2009, Florida State University, Committee Member.

Schwartz, Brian *More than a Look-up Skill: Medical Information Literacy Education in Osteopathic Medical Schools*. D. Mirah Dow, Chair, July 18, 2017. Emporia State University, Committee Member.

Snow, Karen. *A Study of the Perception of Cataloging Quality among Catalogers*. Shawne D. Miksa, Chair, August 1, 2011. University of North Texas, Committee Member.

Dissertation Proposals at Other Institutions

Schwartz, Brian *More than a Look-up Skill: Medical Information Literacy Education in Osteopathic Medical Schools*. D. Mirah Dow, Chair, December 4, 2015. Emporia State University, Committee Member.

Snow, Karen. *A Study of the Perception of Cataloging Quality among Catalogers*. Shawne D. Miksa, Chair, May 11, 2010. University of North Texas, Committee Member.

Master's Thesis at the University of Denver

Hemingson, Jeff. *Recital Paper*. Lamont School of Music, February 2010, Outside Chair.

Capstones at the University of Denver

Anthony, Alisa. *Correlation of Library and Information Science Program outcomes and Vacant Position Qualifications Listed on the Colorado State Library Jobline by Employers During the Period September 1, 2000 through August 31, 2002*. Chair, Winter Quarter, 2003.

Borden, Donna M. *Improving Emergency Communications Systems: Is a Radio Communications Network the Answer?* Fall Quarter, 2014.

Bowden, Heather L.M. *Exploring Biological Models for Long-term Data Preservation*. Chair, Spring Quarter, 2008.

Casenada, Cassandra Y. *Challenges to the Recruitment, Education, and Retention of Librarians of Color*. Chair, Spring Quarter, 2008.

Chang, Jennifer C. *Legal Research Practice and Preference: A Law Firm Perspective*. Chair, Spring Quarter 2011.

Ellis, Megan S. Fitzgerald. *Design of a Public Library Adult Volunteer Recruitment Program and Training Curriculum*. Chair, Winter Quarter, 2003.

Kircher, Kathy. *Development of a Library Pathfinder for Exobiology and Posting it on the Internet*. Chair, Winter Quarter, 2003.

Melhado, Loretta. *Design of St. John's Episcopal Church Library*. Chair, Spring Quarter, 2008.

Radcliff, Kathy. *Original Cataloging of Archival materials in the HERS Collection in Penrose Library*. Chair, Winter Quarter, 2003.

Sass, Carol Ann. *ACT Periodical Index: Access to Catholic Thinking Periodical Index: Web Index to Select Catholic Periodicals*. Spring Quarter 2000.

Stone, Sergio D. *Conducting Community Analysis for the Bemis Public Library (Littleton, Colorado) Using 2002 U.S. Census Data and the Online Outcome-Based Evaluation Toolkit*. Chair, Winter Quarter, 2003.

Tureson, Tamara. *Design and Use of an Information Audit Tool for Use in a Law Library*. Chair, Winter Quarter, 2003.

Tweed, Beth. *Evaluation of Email Reference Service in a Consumer Health Library Environment*. Chair, Winter Quarter, 2003.

GRANTS AND CONTRACTS

Student Learning in Agriculture STEM through Teacher Professional Development. Research team: Stanton Gartin (PI) and Cyndi Hofmeister, Northeast Junior College; Jeff Cash, Cheryl Sánchez, Anne-Marie Crampton, Lamar Community College; Suzanna Spears, Morgan Community College; Jack Wiley, Kerry Gabrielson, Trinidad State Junior College; Michael J. Miller, Colorado State University; Michael Womochil (Co-PI), Casey Sacks, and Sylvia D. Hall-Ellis, Colorado Community College System. U.S. Department of Agriculture, Agriculture and Food Research Initiative, Food, Agriculture, Natural Resources and Human Sciences Education and Literacy Initiative, \$404,460 (2017-2020)

Leading and Achieving: the Colorado Agriculture Regional Consortium. Research team: Jack Wiley (PI), Kerry Gabrielson, Trinidad State Junior College; Jeff Cash (PI), Cheryl Sánchez, Anne-Marie Crampton, Lamar Community College; Suzanna Spears, Morgan Community College; Cyndi Hofmeister, Northeast Junior College; Michael Womochil (Co-PI), Casey Sacks, and Sylvia D. Hall-Ellis, Colorado Community College System. U.S. Department of Agriculture, Hispanic Serving Institutions Education Grants Program, \$504,414 (2017-2020)

Cyber Prep Program Planning Grant. Research team: Debbie Sagen (PI), Brenda Lauer, Pikes Peak Community College; Gretchen Martin, Koiosa Insights; and, Sylvia D. Hall-Ellis, Colorado Community College System. U.S. Department of Commerce, Regional Alliances and Multi-stakeholder Partnerships to Stimulate (RAMPS) Cybersecurity Education and Workforce Development, \$199,681 (2016-2018)

Career and Technical Education in Colorado: Pathways to Education and Employment. Research team: Heather McKay (PI), Rutgers University; Sarah Heath, Casey Sacks, Sylvia D. Hall-Ellis, Colorado Community College System. U.S. Department of Education, Institute of Education Sciences, \$1,400,000 (2017-2021)

Pre-Alliance Planning Grant Colorado Community College Alliance. Research team: Victor Vialpondo (PI) and Janel Highfill, Community College of Aurora; Heidi Loshbaugh (Co-PI), Community College of Denver; Rick Reeves, Bill McGreevy, Liz Cox, and Kristin Aslin, Red Rocks Community College; Cathy Pellish, Front Range Community College; Samuel DeVries, Arapahoe Community College; Sylvia D. Hall-Ellis, Colorado Community College System. National Science Foundation, Louis Stokes Alliance for Minority Participation (LSAMP), \$86,817 (2016-2017)

Towards Scalable Differentiated Instruction Using Technology-enabled, Competency-based, Dynamic Scaffolding. Research team: Karen Wilcox (PI) and Vijay Kumar, Center for Computational Engineering, Massachusetts Institute of Technology; Flora McMartin, Broad-based Knowledge; Quinsigamond Community College; and, Casey Sacks, and Sylvia D. Hall-Ellis, Colorado Community College System. U.S. Department of Education, First in the World Developmental Grant, \$2,891,882 (2015-2019)

Colorado Strategic Partnerships Emergency Grant. Research team: Elise Lowe-Vaughn (PI), Amy Hodson, Celia Hardin, Barbara McBride, James Newby, Christopher Dewhurst, Nina Holland, Kate Anderson, MaryAnn Roe, Chrystalynn Chrystalynn, Elaine Edon, Mona Barnes, Tom Morgan, Rob Hanni, and Marie Valenzuela, Colorado Department of Labor and Employment; Steve Anton, Joelle Brouner, and, Katie Griego, Colorado Department of Human Services; Rebecca Holmes, Judith Martinez, and Jennifer Jirous, Colorado Department of Education; Emily Templin Lesh, Colorado Workforce Development Council; Cory Everett, Colorado Department of Regulatory Agencies; and, Casey Sacks and Sylvia D. Hall-Ellis, Colorado Community College System. U.S. Department of Labor, Strategic Partnerships Emergency Grant, \$5,000,000 (2015-2017)

CAEL Jump Start Program: Competency-Based Education. Research team: Jerry Migler (PI), Casey Sacks, Debra Cohn, Thomas Hartman, and Sylvia D. Hall-Ellis, Colorado Community College System; Matt Jamison, Front Range Community College; Mike Coste, Red Rocks Community College; Amanda Corum, Pueblo Community College; Janet Colvin, Pikes Peak Community College; and, MaryAnn Matheny, Community College of Denver. Council for Adult and Experiential Learning, \$15,000 (2015)

Summit on the Redesign of Developmental Education. Research team: Jerry Migler (PI), Casey Sacks, and Sylvia D. Hall-Ellis, Colorado Community College System; Chip Nava, Pueblo Community College; Kim Moultney,

Arapahoe Community College; Debbie Ulibarri, Trinidad State Junior College; and, Kris Bernard, Front Range Community College. American Association of Community Colleges, \$15,000 (2015-2016)

Equity in Excellence at Colorado Community Colleges. Research team: Keith Howard (PI) and Sylvia D. Hall-Ellis, Colorado Community College System; Estela Mata Bensimon, Center for Urban Education, University of Southern California; and Kerry Gabrielson, Trinidad State Junior College. Colorado Department of Higher Education, Colorado Opportunity Scholarship Program, \$150,000 (2015-2016)

MBA High School of Business in Colorado. Research team: Laurie Urich (PI) and Sylvia D. Hall-Ellis, Colorado Community College System; Rudolph Sumpter and Beatrice Gerrish, Boulder Valley Schools; Keith Curry Lance, RSL Research Group. Colorado Department of Higher Education, Colorado Opportunity Scholarship Program, \$501,295 (2015-2016)

Fullbridge Program in Colorado. Research team: Keith Howard (PI) and Sylvia D. Hall-Ellis, Colorado Community College System; Suzanna Spears, Fort Morgan Community College; and, Cheryl Sánchez and Anne-Marie Compton, Lamar Community College. Colorado Department of Higher Education, Colorado Opportunity Scholarship Program, \$300,000 (2015-2017)

Colorado Community College System Alternative Credit Program. Research team: Jerry Migler (PI), Keith Howard, and Sylvia D. Hall-Ellis, Colorado Community College System. American Council on Education, \$13,000 (2015)

Internationalization in Higher Education. Researcher: Samuel D. Museus. Technical reviewer for MCE: Sylvia D. Hall-Ellis. University of Denver, Office of Internationalization, \$8,000 (2014-2015)

International Perspectives on Bilingual Education. Researcher: Sharolyn Pollard-Durodola. Technical reviewer for MCE: Sylvia D. Hall-Ellis. University of Denver, Office of Internationalization, \$3,700 (2014-2015)

Cultivating Culturally Relevant and Responsive Curriculum and Pedagogy in College. Researcher: Samuel Museus. Technical reviewer for MCE: Sylvia D. Hall-Ellis. University of Denver, iRise Grant, \$5,000 (2014-2015)

Project EMERGE (Educational Model for Evaluation and Replicability in Gifted Environments). Research team: Norma Hafenstein (PI) and Bruce Uhrmacher. Technical reviewer for MCE: Sylvia D. Hall-Ellis. Lynde and Harry Bradley Foundation, \$235,000 (2014-2015)

Collecting Asian American Refugee Stories. Researcher: Samuel Museus. Technical reviewer for MCE: Sylvia D. Hall-Ellis. American Educational Research Association, Research Grant, \$5,000 (2014-2015)

Developing Expertise in Teaching K-5 Mathematics. Research team: Julie Sarama (PI) and Douglas H. Clements (Co-PI), in partnership with the School of Education at the University of Michigan. Technical reviewer for MCE: Sylvia D. Hall-Ellis. National Science Foundation, \$130,344 (2013-2015)

Investigation of the Long-Term Outcomes for Special Education Students. Researcher: Antonio Olmos-Gallos. Technical reviewer for MCE: Sylvia D. Hall-Ellis. Jefferson County School District, Office of Assessment, \$40,000 (2014)

Refugee Community Collaboration. Researcher: Vicki Tomlin (PI) in partnership with the African Community Center and Jewish Family Service. Technical reviewer for MCE: Sylvia D. Hall-Ellis. University of Denver, Center for Community Engagement and Service Learning, \$14,854 (2014-2015)

Access to Mathematics for All. Research team: Richard S. Kitchen (PI), Nicole M. Russell (Co-PI), and Terrence Blackman (Co-PI), Curriculum Studies and Teaching Program, Morgridge College of Education; Álvaro Árias (Co-PI, Department of Mathematics); and, James Gray (Co-PI), Department of Mathematics, Community

College of Aurora. Technical reviewer for MCE: Sylvia D. Hall-Ellis. National Science Foundation, The Robert Noyce Scholarship Program, Capacity Building Project, \$349,926 (2014-2016)

Cognitive Test Battery for Intellectual Disabilities. Research team: Karen Riley (PI), Lyndsay Agans, Jessica Lerner, and Karin Ditttrick-Nathan in partnership with David Hessel (PI), The MIND Institute at the University of California – Davis, and Elizabeth Berry-Kravis, Rush University Medical Center. Technical reviewer for MCE: Sylvia D. Hall-Ellis. National Institutes of Health, Outcome Measures for Use in Treatment Trials for Individuals with Intellectual and Developmental Disabilities (R01), \$2,499,996 (\$588,672 at DU) (2014-2019)

Broadening Participation in Engineering among Women and Latino/as: A Longitudinal, Multi-Site Study. Researcher: Patton Garriott (PI) in partnership with the University of North Dakota and the University of Missouri. Technical reviewer for MCE: Sylvia D. Hall-Ellis. National Science Foundation, HER Core Research, \$677,390 (\$69,992 at DU) (2014-2019)

Designing a Teacher Evaluation System to Improve Teacher Effectiveness for Culturally and Linguistically Diverse Learners. Research team: María del Carmen Sálazar (PI), Jessica Lerner, and Kathy Green. Technical reviewer for MCE: Sylvia D. Hall-Ellis. University of Denver, Professional Research Opportunities for Faculty, \$29,988 (2014-2016)

Developing a College-Going Culture in Latina/O Families: Exploring the Influence of Funds of Knowledge on Family Outreach Programs. Researcher: Judy Marquez Kiyama. Technical reviewer for MCE: Sylvia D. Hall-Ellis. University of Denver, Professional Research Opportunities for Faculty, \$18,720 (2014-2016)

Assessment of Quality of Life in Neural Implantation Surgery for the Treatment of Parkinson's Disease. Researcher: Cynthia McRae. Technical reviewer for MCE: Sylvia D. Hall-Ellis. University of Denver, Office of Internationalization, \$3,967 (2014-2015)

Pura Vida: Cloud Forest, Curriculum and Cross-Cultural Study. Research team: Norma Hafenstein (PI) and Bruce Uhrmacher (Co-PI). Technical reviewer for MCE: Sylvia D. Hall-Ellis. University of Denver, Office of Internationalization, \$8,000 (2014-2015)

Online Course Development for Curriculum and Instruction. Researcher: Ruth Chao. Technical reviewer for MCE: Sylvia D. Hall-Ellis. University of Denver, Office of Teaching and Learning, \$3,000 (2014)

Online Course Development for Curriculum and Instruction. Researcher: María del Carmen Sálazar. Technical reviewer for MCE: Sylvia D. Hall-Ellis. University of Denver, Office of Teaching and Learning, \$3,000 (2014)

Online Course Development for Curriculum and Instruction. Researcher: Jessica Lerner. Technical reviewer for MCE: Sylvia D. Hall-Ellis. University of Denver, Office of Teaching and Learning, \$3,000 (2014)

Online Course Development for Curriculum and Instruction. Researcher: Duan Zhang. Technical reviewer for MCE: Sylvia D. Hall-Ellis. University of Denver, Office of Teaching and Learning, \$3,000 (2014)

The Mathematics Education of African Americans, 1866 – 1954. Researcher: Nicole M. Russell. Technical reviewer for MCE: Sylvia D. Hall-Ellis. National Academy of Education, Spencer Foundation Postdoctoral Fellowship, \$55,000 (2014-2016)

Early Childhood Care and Education Study. Research team: Carrie Germeroth (PI), Melissa Mincic, and Douglas H. Clements. Technical reviewer for MCE: Sylvia D. Hall-Ellis. State of North Dakota, Department of Public Instruction, \$73,500 (2013-2014)

Graduate Level Specialty in Addiction Counselor Training with Emphasis on Integration of Native American Specific Content. Research team: Ruth Chao (PI) and Michael J. Faragher (Co-PI). Technical reviewer for MCE: Sylvia D. Hall-Ellis. The Galena Foundation, \$289,732 (2013-2016)

The Collecting Asian American and Pacific Islander Refugee Stories (CARS) Project. Researcher: Samuel Museus. Technical reviewer for MCE: Sylvia D. Hall-Ellis. University of Denver, Center for Community Engagement and Service Learning, \$15,000 (2014)

Parents in Transition: A Multiple Case Study of Parent and Family Orientation Programs. Researcher: Judy Marqu ez Kiyama. Technical reviewer for MCE: Sylvia D. Hall-Ellis. University of Denver, Faculty Research Fund, \$1,500 (2014-2015)

The Sistah Network: Black Women Graduate Students Supporting and Retaining Each Other. Researcher; Nicole M. Russell. Technical reviewer for MCE: Sylvia D. Hall-Ellis. University of Denver, Faculty Research Fund, \$2,708 (2014-2015)

Evaluation of the Northeast Denver Babies Ready for College Program. Research team: Carrie Germeroth (PI), Melissa Mincic, and Douglas H. Clements. Technical reviewer for MCE: Sylvia D. Hall-Ellis. Mile High Montessori, \$9,922 (2013-2014)

Developing Teaching Expertise in K-5 Mathematics. Research team: Julie Sarama (PI) and Douglas Clements (University of Denver), in partnership with Timothy Boerst (PI), Meghan Shaughnessy, Deborah Ball, Hyman Bass (School of Education at the University of Michigan). Technical reviewer for MCE: Sylvia D. Hall-Ellis. National Science Foundation, \$449,827 (\$130,344 at the University of Denver (2013-2015)

Early Learning Care and Education Study Program Grant for the State of North Dakota. Research team: Carrie Germeroth (PI), Melissa Mincic, and Sheridan Green. Technical reviewer for MCE: Sylvia D. Hall-Ellis. State of North Dakota Department of Public Instruction, \$73,500 (2013-2014)

Local Professional Learning Community for School Leaders. Research team: Susan Korach (PI), Kristina Hesbol, and Rebecca McClure. Technical reviewer for MCE: Sylvia D. Hall-Ellis. Education Development Center, \$10,950 (2013)

Healthy Eaters, Lifelong Movers 2: Implementing Evidence-Based School Environment, Policy, and Curricular Changes to Increase Opportunities for Healthy Eating and Physical Activity in Low Income, Rural Colorado. Research team: Elaine Berlansky, University of Colorado at Denver (PI), Nicholas Cutforth, University of Denver (Co-PI), and Allison Reeds. Technical reviewer for MCE: Sylvia D. Hall-Ellis. Colorado Health Foundation, \$3,103,108 (2013-2017)

Hughes Rare Books Library Room Renovation in the Sturm College of Law. Project team: Patti H. Marks, Sylvia D. Hall-Ellis, and Leigh Elliott. Mabel T. Hughes Charitable Trust, \$34,000 (2013-2014)

The Promise Center Partnership with the Marsico Institute for Early Learning and Literacy and the City and County of Denver. Research team: Karen Riley (PI), Douglas H. Clements (Co-PI), and Sheridan Green. Technical reviewer for MCE: Sylvia D. Hall-Ellis. The Piton Foundation, \$223,468 (2013-2014)

Center of Excellence for Problem Gambling. Research team: Ruth Chao (PI) and J. Mike Faragher. Technical reviewer for MCE: Sylvia D. Hall-Ellis. Colorado Department of Behavioral Health, \$68,021 (2012-2013)

United Way Implementation and Validation Review. Research team: Douglas H. Clements (PI), Amanda Moreno, and Sheridan Green. Technical reviewer for MCE: Sylvia D. Hall-Ellis. Mile High United Way, \$19,737 (2013)

Math/Science Partnership in Rural Districts. Research team: Kristen Bunn (PI, Eagle County Schools), Paul Michalec (Co-PI), and Alegra Reiber. Technical reviewer for MCE: Sylvia D. Hall-Ellis. Colorado Department of Education, Colorado's Mathematics and Science Partnership Program, \$750,000 (2013-2014)

Mathematics and Science Education of African Americans. Research team: Nicole Russell (PI), Sylvia D. Hall-Ellis, Steve Fisher (Penrose Library). Technical reviewer for MCE: Sylvia D. Hall-Ellis. University of Denver, Professional Research Opportunities for Faculty, \$29,994 (2013-2015)

Online Course Development for Curriculum and Instruction. Researcher: Nicole Russell. Technical reviewer for MCE: Sylvia D. Hall-Ellis. University of Denver, Office of Teaching and Learning, \$3,000 (2013)

Discourse and Opportunity: Undocumented Students and Higher Education Policy. Researcher: Ryan Gildersleeve. Technical reviewer for MCE: Sylvia D. Hall-Ellis. National Academy of Education, Spencer Foundation Postdoctoral Fellowship, \$55,000 (2012-2014)

An Anthropological Study of the Latino Graduation Ceremony. Researcher: Ryan Gildersleeve. Technical reviewer for MCE: Sylvia D. Hall-Ellis. Spencer Foundation, \$39,900 (2012-2013)

Fragile-X and Pharmaceutical Company: Clinical Trial of AFQ056. University of California – Davis Children’s Hospital MIND Institute (Sacramento), Children’s Hospital Denver, and Rush Children’s Hospital at Rush University Medical Center (Chicago). Karen Riley, PI. Technical reviewer for MCE: Sylvia D. Hall-Ellis. Novartis Pharmaceuticals Corporation, \$394,206 (2012-2014)

Project Engage, Phase 2, a DAPRA Grant in partnership with Total Immersion Systems, Inc., and Texas A&M University. Research team: Karen Riley (PI) and Lyndsay Agans (Co-PI). Technical reviewer for MCE: Sylvia D. Hall-Ellis. U.S. Department of Defense, \$60,000 (2011-2013)

International School Psychology Practicum Exchange. Researcher: Gloria L. Miller. Technical reviewer for MCE: Sylvia D. Hall-Ellis. University of Denver, Center for Community Engagement and Service Learning, \$14,951 (2012-2013)

Online Course Development for Curriculum and Instruction. Research team: Bruce Uhrmacher (PI) and Norma Hafenstein (Co-PI). Technical reviewer for MCE: Sylvia D. Hall-Ellis. University of Denver, Office of Teaching and Learning, \$18,193 (2012-2014)

Writers in the Schools. Research team: Karen Riley (PI) and Amanda Moreno (Co-PI). Technical reviewer for MCE: Sylvia D. Hall-Ellis. Colorado Humanities, \$4,965 (2012-2013)

Learning Ecosystem Validation Grant. Research team: Karen Riley (PI), Lyndsay Agans, Kent Seidel, and Shimelis Assefa. Technical reviewer for MCE: Sylvia D. Hall-Ellis. Bill & Melinda Gates Foundation, \$315,000 (2012-2013)

Project Words of Oral Reading and Language Development (WORLD). Research team: Jorge E. Gonzalez (PI), Texas A&M University; Laura Saenz (Co-PI), University of Texas – Pan American; and, Sharolyn Pollard-Durodola (Co-PI), University of Denver. Technical reviewer for MCE: Sylvia D. Hall-Ellis. U.S. Department of Education, Institute of Education Sciences, \$53,354 (2012-2015); award \$640,718, transfer from Texas A&M University

Increasing the Efficacy of an Early Mathematics Curriculum with Scaffolding Designed to Promote Self-Regulation. Research team: Douglas H. Clements (PI) and Julie Sarama (Co-PI). Technical reviewer for MCE: Sylvia D. Hall-Ellis. U.S. Department of Education, Institute of Education Sciences, \$1,445,315 (2008-2014); award \$4,541,975, transfer from University at Buffalo, The State University of New York

Using Rule Space and Poset-based Adaptive Testing Methodologies to Identify Ability Patterns in Early Mathematics and Create a Comprehensive Mathematics Ability Test. Research team: Douglas H. Clements (PI) and Julie Sarama (Co-PI). Technical reviewer for MCE: Sylvia D. Hall-Ellis. National Science Foundation, \$323,791 (2010-2014); award \$1,194,944, transfer from University at Buffalo, The State University of New York

Comprehensive Postdoctoral Training in Scientific Education Research. Researcher: Julie Sarama (PI). Technical reviewer for MCE: Sylvia D. Hall-Ellis. U.S. Department of Education, Institute of Education Sciences, \$133,458 (2010-2014); award \$613,353, transfer from University at Buffalo, The State University of New York

Longitudinal Study of a Successful Scaling Up Project: Extending TRIAD. Research team: Douglas H. Clements (PI), Julie Sarama (Co-PI), and Abt Associates (Carolyn Layzer, Fatih Unlu, Laurie Bozzi, Lily Fesler, Alina Martinez, Cristofer Price, James van Orden). Technical reviewer for MCE: Sylvia D. Hall-Ellis. Institute of Education Sciences, \$384,940 (2011-2015; award \$1,250,286, transfer from University at Buffalo, The State University of New York

Early Childhood Education in the Context of Mathematics, Science, and Literacy. Research team: Julie Sarama (PI), Douglas H. Clements (Co-PI). Technical reviewer for MCE: Sylvia D. Hall-Ellis. National Science Foundation, \$990,020 (2010-2014; award \$2,285,228, transfer from University at Buffalo, The State University of New York

Early Childhood Clearinghouse Information Center Redesign. Research team: Karen Riley (PI) and Amanda Moreno (Co-PI). Technical reviewer for MCE: Sylvia D. Hall-Ellis. Office of the Lt. Governor of Colorado, \$12,000 (2012-2013)

Morgridge Rural Educational Leadership Initiative. Research team: Lyndsay Agans (PI), Linda Brookhart (Co-PI), Susan Korach, and Rebecca McClure. Technical reviewer for MCE: Sylvia D. Hall-Ellis. Morgridge Family Foundation, \$100,000 (2012-2014)

Center of Excellence for Problem Gambling. Research team: Patrick Sherry (PI) and J. Mike Faragher. Technical reviewer for MCE: Sylvia D. Hall-Ellis. Colorado Department of Behavioral Health, \$55,000 (2012-2013)

Intermodal Transportation Institute Research Initiatives. Researcher: Patrick Sherry. Technical reviewer for MCE: Sylvia D. Hall-Ellis. University Transportation Centers Program, Research and Innovative Technology Administration, U.S. Department of Transportation. \$600,000 (2012-2014)

Mile High United Way Social Innovation Fund Early Literacy Initiative. Gloria L. Miller, PI, Amanda Moreano, Kim Hartnett-Edwards, and Sheridan Green. Technical reviewer for MCE: Sylvia D. Hall-Ellis. Mile High United Way, \$89,992 (2012-2013)

International School Psychology Practicum Exchange. Researcher: Gloria L. Miller. Technical reviewer for MCE: Sylvia D. Hall-Ellis. University of Denver, Center for Community Engagement and Service Learning, \$1,000 (2012-2013)

Refugee Student Art Outreach. Researcher: Karin Dittrick-Nathan. Technical reviewer for MCE: Sylvia D. Hall-Ellis. University of Denver, Faculty Research Fund, \$3,000 (2012-2013)

Resistance, Resilience, and Reciprocity: Centering the Voices of Black Doctoral Women with Faculty Aspirations. Researcher: Nicole M. Russell. Technical reviewer for MCE: Sylvia D. Hall-Ellis. University of Denver, Faculty Research Fund, \$2,965 (2012-2013)

Assessing Learning through Student Notebooks. Research team: Keith Miller, Nancy Sasaki, and Kathy Green. Technical reviewer for MCE: Sylvia D. Hall-Ellis. University of Denver, Professional Research Opportunities for Faculty, \$30,000 (2012-2014)

International School Psychology Practicum Exchange. Researcher: Gloria L. Miller. Technical reviewer for MCE: Sylvia D. Hall-Ellis. University of Denver, Office of Internationalization, \$2,000 (2012-2013)

ELO in Colorado. Research team: Cynthia Hazel and Duan Zhang. Technical reviewer for MCE: Sylvia D. Hall-Ellis. Colorado Legacy Foundation, \$150,000 (2012-2013)

- Creating Online LIS Courses*. Research team: Mary C. Stansbury (PI), Shimelis Assefa, Denise Anthony, Xiao Hu, and Krystyna Matusiak. Technical reviewer for MCE: Sylvia D. Hall-Ellis. University of Denver, Center for Teaching and Learning, \$15,000 (2011-2013)
- Maritime Piracy Seminar*. Researcher: Ved Nanda, The Nanda Center, Sturm College of Law. Technical reviewer for Sturm College of Law: Sylvia D. Hall-Ellis. Arsenault Family Foundation, \$15,000 (2012-2013).
- Early Childhood Librarianship: An Interdisciplinary, Experiential Learning MLIS*. Researcher: Mary C. Stansbury (PI). Technical reviewer for MCE: Sylvia D. Hall-Ellis. Laura Bush's 21st Century Librarians Program, Institute for Museums and Library Services, \$249,066 (2012-2014)
- Learning Ecosystem Planning Grant*. Research team: Karen Riley (PI), Lyndsay Agans, Kent Seidel, and Shimelis Assefa. Technical reviewer for MCE: Sylvia D. Hall-Ellis. Bill & Melinda Gates Foundation, \$281,217 (2011-2012)
- Advanced Service Learning Practitioner Faculty Grant*, Sylvia D. Hall-Ellis, University of Denver, Center for Community Engagement and Service Learning, \$400 (2011)
- Evaluating and Enhancing the EspeciallyMe Program*. Research team: Lori D. Patton and Nicole Russell. Technical reviewer for MCE: Sylvia D. Hall-Ellis. University of Denver, Center for Community Engagement and Service Learning, Public Good Fellowship Grant, \$24,780 (2012)
- Choosing Excellence: Let Every Child Bloom*. Research team: Shimelis Assefa (PI) and Mary C. Stansbury (Co-PI). Technical reviewer for MCE: Sylvia D. Hall-Ellis. University of Denver, Center for Community Engagement and Service Learning, Public Good Grant, \$7,657 (2012)
- K-8 STEM Content Specific Professional Development to Improve Elementary Student Achievement*. Research team: Kent Seidel (PI), Nicole Russell (Co-PI), Kimberly Hartnett-Edwards, Paul Michalec, Jeff Farmer, Keith Miller, Alegra Reiber, and Nancy Sasaki. Technical reviewer for MCE: Sylvia D. Hall-Ellis. Colorado Department of Education, Improving Teacher Quality Grant, (Title II ESEA), \$307,299 (2011-2012)
- Building a Better Principal Pipeline to Boost Student Achievement*. Researcher: Susan Korach. Technical reviewer for MCE: Sylvia D. Hall-Ellis. Denver Public Schools; a subcontract from the Wallace Foundation Grant, \$170,000 (2011-2017)
- Center of Excellence for Problem Gambling*. Research team: J. Mike Faragher (Co-PI) and Bobbie Vollmer (PI). Technical reviewer for MCE: Sylvia D. Hall-Ellis. Colorado Department of Behavioral Health, \$79,999 (2011-2012)
- An Exploration of Novice Teachers' Core Competencies: Impacts on Student Achievement, and Effectiveness of Preparation*. Research team: Kent Seidel (PI), Kathy Green (Co-PI), Kimberly Hartnett-Edwards, and Duan Zhang. Technical reviewer for MCE: Sylvia D. Hall-Ellis. Institute of Education Sciences, Effective Teachers and Effective Teaching, \$990,987 (2012-2015)
- Project Engage, a DAPRA Grant in partnership with Total Immersion Systems, Inc., and Texas A&M University*. Research team: Karen Riley (PI) and Lyndsay Agans (Co-PI). Technical reviewer for MCE: Sylvia D. Hall-Ellis. U.S. Department of Defense, \$49,964 (2011-2014)
- User-centered Evaluation of Music Search Engines*. Researcher: Xiao Hu. Technical reviewer for MCE: Sylvia D. Hall-Ellis. University of Denver, Faculty Research Fund, \$2,931 (2011-2012)
- Educational Practicum in Vietnam and China to Promote the Inclusion of Young Children with Disabilities*. Researcher: Gloria L. Miller. Technical reviewer for MCE: Sylvia D. Hall-Ellis. University of Denver, Office of Internationalization, \$5,000 (2011-2012)

- Evaluation of Colorado's Enhancing Quality in Infant-Toddler (EQIT) Initiative.* Research team: Virginia R. Maloney and Amanda Moreno. Technical reviewer for MCE: Sylvia D. Hall-Ellis. Buell Foundation, \$395,884 (2011-2013)
- Creating Engaging Environments to Teach Pre-Algebra Mathematics to Elementary Students.* Research team: Álvaro Arias, Mario López, María del Carmen Salazar, and Lyndsay Agans. Technical reviewer for MCE: Sylvia D. Hall-Ellis. University of Denver Interdisciplinary Grant, \$60,000 (2011-2012)
- Morgridge Education Technology Accessible (META) Resource Project.* Research team: Lyndsay Agans (PI) and Shimelis Assefa (Co-PI). Technical reviewer for MCE: Sylvia D. Hall-Ellis. Morgridge Family Foundation, \$36,000 (2011)
- MCE Connect: A 21st Century Framework for Faculty Development.* Research team: Bruce Uhrmacher (PI), Shimelis Assefa (Co-PI), Lyndsay Agans (Co-PI), Kimberly Hartnett-Edwards, Norma Hafenstein, Xiao Hu, Paul Michalec (Co-PI), María del Carmen Salazar (Co-PI), and Sandra Snyder-Mondragon. Technical reviewer for MCE: Sylvia D. Hall-Ellis. University of Denver, Center for Teaching and Learning, \$22,355 (2011-2012)
- Parent Education and Parent Leadership and Advocacy.* Research team: Virginia Maloney (PI) and Amanda Moreno, Marsico Institute for Early Learning and Literacy. Technical reviewer for MCE: Sylvia D. Hall-Ellis. Colorado Health Foundation, \$27,358 (2010-2011)
- Intentional School Culture.* Researcher: Cynthia Hazel. Technical reviewer for MCE: Sylvia D. Hall-Ellis. Denver Public Schools, \$38,040 (2010-2011)
- Healthy Eaters, Lifelong Movers: Implementing Evidence-Based School Environment, Policy, and Curricular Changes to Increase Opportunities for Healthy Eating and Physical Activity in Low Income, Rural Colorado.* Research team: Elaine Berlansky, University of Colorado at Denver (PI), Nicholas Cutforth, University of Denver (Co-PI), and Allison Reeds. Technical reviewer for MCE: Sylvia D. Hall-Ellis. Colorado Health Foundation, \$1,683,277 (2011-2014)
- Second Life Learning Community.* Research team: Don McCubbrey (PI), Sylvia D. Hall-Ellis (Co-PI), Walter LaMendola, and Paul Novak. University of Denver, Center for Teaching and Learning, \$13,000 (2010-2011)
- Reintroducing the Value of Law Librarians to Academic and Public Librarians in Colorado through the Identification and Use of Emerging Technologies.* Research team: Sylvia D. Hall-Ellis (Co-PI), Stacey L. Bowers (PI), and Christopher Hudson, in partnership with Denver Public Library, Arapahoe Library District, and the Colorado State Supreme Court Library. University of Denver, Center for Community Engagement and Service Learning, \$5,773 (2010-11)
- Reintroducing the Value of Law Librarians to Public Librarians through the Identification and Use of Emerging Technologies and Resources.* Research team: Stacey Bowers (PI) and Sylvia D. Hall-Ellis (Co-PI). American Association of Libraries, Wolters Kluwer Law & Business Grant Program, \$2,725 (2010-2011)
- Faculty Service Learning Pod.* Research team: María del Carmen Salazar and Nicholas Cutforth (Curriculum and Instruction Program), Frank Tuitt (Higher Education Program), Cynthia Hazel and Gloria Miller (Child, Family, and School Psychology Program), and Sylvia D. Hall-Ellis (Library and Information Science Program). University of Denver, Center for Community Engagement and Service Learning, \$8,000 (2010-2011)
- Lincoln Collaborative.* Research team: Antonio Esquibel (Principal, Lincoln High School), María del Carmen Salazar (Curriculum and Instruction Program), and Sylvia D. Hall-Ellis. School Improvement Grant, Denver Public Schools, \$375,000 (2010-2012)
- Future LEADers of America: Leaders III.* Research team: Denver Public Library (Kristen Svendsen, PI), the University of Denver (Sylvia D. Hall-Ellis), the Colorado Chapter of REFORMA (Orlando Archibeque), and the Colorado Association of Libraries (Martin Garner). Laura Bush's Recruiting Librarians for the 21st Century Program, Institute for Museums and Library Services, \$988,366 (2009-2012)

Teaching for Success in the Library Environment: LIS 4030 in Library 2.0. Research team: Deborah S. Grealy (PI) and Sylvia D. Hall-Ellis (Co-PI). University of Denver, Center for Teaching and Learning, \$ 9,350 (2009-10)

Writing Group Faculty Grant, Sylvia D. Hall-Ellis, University of Denver, Center for Community Engagement and Service Learning, \$750 (2008-2009)

Collaborative Learning Faculty Grant, Sylvia D. Hall-Ellis, University of Denver, Center for Teaching and Learning, \$1,500 (2008)

Connecting Information Literacy to Learning. Research team: Lori Micho, Merrie Valliant, Amanda Samland, and Sylvia D. Hall-Ellis. Colorado State Library, LSTA Discretionary Grant Program, \$19,548 (2008-2009)

Law Librarianship Fellows Program. Research team: Sylvia D. Hall-Ellis (PI), Stacey Bowers (Co-PI), and Christopher Hudson, Westminster Law Library. Laura Bush's 21st Century Librarians Program, Institute for Museums and Library Services, \$999,370 (2008-2012)

Grant Writing in a Cooperative Learning Environment. Sylvia D. Hall-Ellis. University of Denver, Center for Teaching and Learning, \$2,000 (2008-2009)

Project Homeless Connect 6 Event Evaluation. Research team: Sylvia D. Hall-Ellis and Duan Zhang. University of Denver Center for Community Engagement and Service Learning, \$9,785 (2008)

Project Ecuador: International Learning Service Libraries – A Faculty Development Experience in Ecuador. Sylvia D. Hall-Ellis, Office of Internationalization, University of Denver, \$600 (2007)

Project Ecuador: International Learning Service Libraries – A Faculty Development Experience in Ecuador. Sylvia D. Hall-Ellis, International Service Learning Office, University of Denver, \$400 (2007)

Project Homeless Connect 5 Event Evaluation. Research team: Sylvia D. Hall-Ellis and Duan Zhang. University of Denver Center for Community Engagement and Service Learning, \$1,000 (2007)

Project Homeless Connect 4 Event Evaluation. Research team: Sylvia D. Hall-Ellis and Duan Zhang. University of Denver Center for Community Engagement and Service Learning, \$4,595 (2007)

Future LEADers of America: Leaders II. Research team: Denver Public Library (Kristen Svendsen, PI), the University of Denver (Sylvia D. Hall-Ellis), and the Colorado Chapter of REFORMA (Orlando Archibeque). Laura Bush's Recruiting Librarians for the 21st Century Program, Institute for Museums and Library Services, \$988,518 (2007-2010)

Strategic Planning Assistance for the Denver Medical Library. Sylvia D. Hall-Ellis. Denver Medical Library, Inc., \$30,000 (2006-2007)

Destiny Software for JMAC Student Lab. Sylvia D. Hall-Ellis, gift from the Sagebrush Corporation, Minneapolis, Minnesota, \$10,000 (2006)

Libraries: Tools for Education and Development Worldwide: A Faculty Development Experience in France. Sylvia D. Hall-Ellis, Office of Internationalization, University of Denver, \$800 (2005)

Denver Public Library: Opportunities for Change. Sylvia D. Hall-Ellis, Colorado Community Based Research Network, \$2,000 (2005)

Future LEADers of America. Research team: Denver Public Library (Letty Icolari and Steve Taylor, PIs), Emporia State University (Jim Agee), and the University of Denver (Sylvia D. Hall-Ellis). Recruiting Librarians for the 21st Century Program, Institute for Museums and Library Services, \$670,315 (2005-2008)

- American Association of University Professors Summer Institute Professional Development Grant.* Sylvia D. Hall-Ellis, American Association of University Professors, \$300 (2005)
- Beta Phi Mu Alumni Tea.* Sylvia D. Hall-Ellis, gift from the Office of Alumni and Parent and Relations, University of Denver, \$2,000 (2005)
- Spectrum Software for LIS Student Lab.* Sylvia D. Hall-Ellis, gift from the Sagebrush Corporation, Minneapolis, Minnesota, \$5,000 (2005)
- Developing Research Capacity in Community Organizations and Residents through Training and Technical Assistance.* Nicholas J. Cutforth (PI) and Sylvia D. Hall-Ellis. Piton Foundation, \$25,000 (2005-2006)
- Libraries: Tools for Education and Development Worldwide: A Faculty Development Experience in Argentina.* Sylvia D. Hall-Ellis, Office of Internationalization, University of Denver, \$500 (2004)
- Developing Research Capacity in Community Organizations and Residents through Training and Technical Assistance.* Research team: Nicholas J. Cutforth (PI), Gary Lichtenstein and Sylvia D. Hall-Ellis, Piton Foundation, \$25,000 (2003-2004)
- Increasing Spanish-Speaking and Hispanic Diversity among Library and Information Science Students at the University of Denver: Development of a Student Recruitment Model.* Researcher: Sylvia D. Hall-Ellis (PI), Office of Multicultural Excellence, University of Denver, \$2,750 (2003-2004)
- Collection Development Enrichment to Support the Cataloging & Classification Specialization and School Librarianship within the Library & Information Science Program at the University of Denver.* Research team: Sylvia D. Hall-Ellis (PI) and Deborah S. Grealy. Women's Library Association, University of Denver, \$4,000 (2003)
- Collection Development Enrichment to Support the Library & Information Science Program at the University of Denver.* Research team: Deborah S. Grealy (PI) and Sylvia D. Hall-Ellis. Women's Library Association, University of Denver, \$4,000 (2001)
- Wireless LAN for Library Education.* Research team: Deborah S. Grealy (PI) and Sylvia Hall-Ellis. University of Denver, Center for Teaching and Learning, \$24,000 (2001-2002)
- Upward Bound – A Program for South Texas Youth.* Research team: Monte Churchill, Executive Director of Community Relations; Gary R. Saucedo, Outreach Coordinator; Raymond Hernandez, (PI) Associate Dean for Student Success; and Sylvia D. Hall-Ellis, South Texas Community College (McAllen, Texas). U.S. Department of Education, Office of Postsecondary Education, \$2,672,003 (1999-2003)
- Write Now! Improving Elementary Students' Writing Skills.* Research team: Caryl G. Thomason, Assistant Superintendent (PI); Karen Tankersley, Principal; and, Hal Anderson, Director of Technology, Cheyenne Mountain School District 12 (Colorado Springs, Colorado); and Sylvia D. Hall-Ellis. Colorado Department of Education, Educational Telecommunications Unit, \$189,453 (1999-2001)
- Operation Quick Start -- Distance Learning in Rural Colorado.* Research team: Randal Weigum, Technology Coordinator (PI); Bonnie Barns, Director of Federal Programs and Staff Development; and, Adam "Joe" Raskop, Executive Director, Southeastern Board of Cooperative Educational Services (Lamar, Colorado); and Sylvia D. Hall-Ellis. Colorado Department of Education, Educational Telecommunications Unit, \$400,000 (1999-2001)
- Advanced Technological Training for Information Professionals for the 21st Century.* Research team: Mario Reyna, Division of Business Director (PI) and Sylvia D. Hall-Ellis, South Texas Community College (McAllen, Texas). Phi Delta Kappa and the National Science Foundation, \$250,000 (1999-2001)
- Working Connections – Training Information Technologies Professionals for the 21st Century.* Research team: Mario Reyna, Division of Business Director (PI) and Sylvia D. Hall-Ellis, South Texas Community College

(McAllen, Texas). Microsoft Corporation and the American Association of Community Colleges, \$1,147,775 (1999-2001)

The ROAD (Research Oriented Amplification of Development to Literacy) Program. Research team: Deborah J. Leong (PI), Metropolitan State University; Elena Bodrova, Metropolitan State University; Dmitri Semenov, Robert J. Marzano, and Sylvia D. Hall-Ellis, Mid-continent Regional Educational Laboratory (Aurora, Colorado). Hewlett-Packard Foundation, \$25,000 (1998-1999)

Press to Literacy. Research team: Deborah J. Leong (PI), Metropolitan State University; Elena Bodrova, Metropolitan State University; Dmitri Semenov, Robert J. Marzano, and Sylvia D. Hall-Ellis, Mid-continent Regional Educational Laboratory (Aurora, Colorado). The Denver Post and the Robert S. McCormick Foundation, \$49,818 (1998-1999)

International Telementor Center. Research team: David Neils, David B. Frost (PI), and Sylvia D. Hall-Ellis, Mid-continent Regional Educational Laboratory (Aurora, Colorado). Hewlett-Packard Philanthropy, \$100,000 (1998-1999)

America Reads: Providing Tutor Training for the America Reads Challenge. Research team: Louis F. Cicchinelli (PI) and Sylvia D. Hall-Ellis, Mid-continent Regional Educational Laboratory (Aurora, Colorado). U.S. Department of Education, Office of Educational Research and Improvement, \$306,000 (1998-1999)

Comprehensive School Reform. Research team: Louis F. Cicchinelli (PI), J. Timothy Waters, and Sylvia D. Hall-Ellis, Mid-continent Regional Educational Laboratory (Aurora, Colorado). U.S. Department of Education, Office of Educational Research and Improvement, \$285,000 (1998-1999)

Sustainable Energy Education (SEE) Program for Grades 4-8: Preparing Today's Youth for Lifelong Learning and Responsible Actions in Energy Conservation. Research team: Mary Gromko, Colorado Department of Education; Gene McCarthy, Rocky Flats Field Office, U.S. Department of Energy; Gina Kissell, National Renewable Energy Laboratory; and Barbara L. McCombs (PI), Janet L. Bishop, and Sylvia D. Hall-Ellis, Mid-continent Regional Educational Laboratory (Aurora, Colorado). State of Colorado Governor's Office for Energy Conservation, \$499,936 (1997-1999)

Review of Kansas Curriculum Standards in Mathematics and Language Arts. Research team: Robert J. Marzano (PI), John S. Kendall, David B. Frost, and Sylvia D. Hall-Ellis, Mid-continent Regional Educational Laboratory (Aurora, Colorado). Submitted to the Kansas State Department of Education, \$25,903 (1998)

International Telementor Center. Research team: David Neils, John Kuglin, Chris Rapp, David B. Frost (PI), and Sylvia D. Hall-Ellis, Mid-continent Regional Educational Laboratory (Aurora, Colorado). Hewlett-Packard Company, \$54,752 (1998)

Genesis Mission: Education Public Outreach. Developed in partnership by the Jet Propulsion Laboratory, California Institute of Technology, Los Alamos National Laboratory, Lockheed Martin Astronautics, and the Mid-continent Regional Educational Laboratory (Aurora, Colorado). Research team: John T. Sutton (PI), Alice Krueger, Martha Henry, Greg Rawls, Shae Isaacs, Jeff Johnson, Deb Jordan, Arlene Mitchell, David B. Frost, Jana Caldwell, J. Timothy Waters, and Sylvia D. Hall-Ellis. National Aeronautics and Space Administration, \$139,700,000; subcontract award, \$4,750,000 (1997-2007)

North Dakota Mathematics Assessment Project. Developed in partnership by the North Dakota Department of Education and Mid-continent Regional Educational Laboratory (Mid-continent Regional Educational Laboratory). Research team: Ann Clapper, Clarence Bina, Greg Gallagher, North Dakota Department of Education; Don Burger (PI), Hillary Michaels, and Sylvia D. Hall-Ellis, Mid-continent Regional Educational Laboratory (Aurora, Colorado). U.S. Office of Education, \$1,618,214; subcontract award, \$389,076 (1997-2001)

Pacific Resources for Education and Learning Distance Education: Project Evaluation. Developed in partnership by the Pacific Educational Community, the Pacific Resources for Education and Learning (PREL), and Mid-continent Regional Educational Laboratory (McREL). Research team: John W. Kofel (PI), Executive Director, PREL; J. Timothy Waters, Executive Director; Joan Buttram, Robert Keller, and Sylvia D. Hall-Ellis, Mid-continent Regional Educational Laboratory (Aurora, Colorado). U.S. Office of Education, Star Schools Program, \$10,000,000; subcontract award, \$500,000 (1997-2002)

Identification of Bilingual Gifted and Talented Children: A Comprehensive School Grants for Bilingual Education. Developed in partnership by Hidalgo (Texas) ISD, Los Fresnos (Texas) CISD, Progreso (Texas) ISD, University of Texas – Pan American (Edinburg, Texas), and Education Service Center, Region One (Edinburg, Texas). Research team: Hilda Medrano, Dean, College of Education, University of Texas – Pan American; Linda Phemister (PI), Janie Navarro, and Sylvia D. Hall-Ellis, Education Service Center, Region One. U.S. Department of Education, Office of Bilingual Education and Minority Languages Affairs, \$1,670,633 (1997-2002)

Academics 2000: First Things First -- The Texas Goals 2000. Developed for Jim Hogg (Hebbronville, Texas) County ISD, Mirando City (Texas) ISD, and San Isidro (Texas) ISD. Research team: Hilda Medrano, Dean, College of Education, University of Texas - Pan American (Edinburg, Texas); Angie Lehmann, Amy Mares, Ellen Gonzalez (PI), and Sylvia D. Hall-Ellis, Education Service Center, Region One (Edinburg, Texas). Texas Education Agency, \$339,987 (1997-2000)

Southwestern Bell's Learning Communities Initiative. Developed for Tech Prep of the Rio Grande Valley, Inc. (Harlingen, Texas); the Center for Professional Teacher Development, University of Texas – Brownsville; Teach for America – Rio Grande Valley (McAllen, Texas); and Education Service Center, Region One (Edinburg, Texas). Research team: Patricia G. Bubb, Executive Director (PI), Tech Prep of the Rio Grande Valley; Martin Winchester, Executive Director, Teach for America – Rio Grande Valley; Aileen Johnson, Director, School of Education, University of Texas – Brownsville; and Sylvia D. Hall-Ellis. Southwestern Bell Foundation, \$100,000 (1997-1998)

Texas School to Work: Regional Implementation. Developed for Tech Prep of the Rio Grande Valley, Inc. (Harlingen), South Texas Community College (McAllen), Texas State Technical College (Harlingen), Texas Southmost College (Brownsville), Empowerment Zone of the Rio Grande Valley (Mercedes), Project VIDA (Weslaco), Youth Fair Chance (McAllen), and Education Service Center, Region One (Edinburg). Research team: Patricia G. Bubb (PI), Tech Prep of the Rio Grande Valley; Stephen Vassberg, Texas State Technical College; Ellen Trevino, Youth Fair Chance; Wanda Garza, Project VIDA; Leonardo Olivares, University of Texas – Pan American; Michael Bell, South Texas Community College; and Sylvia D. Hall-Ellis. Texas Workforce Commission, \$4,250,000 (1997-2002).

Comprehensive Bilingual Education Grant for Hidalgo ISD and Roma ISD. Developed for Hidalgo (Texas) ISD, Roma (Texas) ISD, College of Education, University of Texas – Pan American (Edinburg, Texas), and Education Service Center, Region One (Edinburg, Texas). Research team: Tomas Thomas (PI), Director, Office of Bilingual Education and Sylvia D. Hall-Ellis. U.S. Department of Education, Office of Bilingual Education and Minority Languages Affairs, \$1,531,361 (1997-2002)

Lopez High School, Porter High School, Rivera High School, Central Middle School, and Perkins Middle School, Brownsville (Texas) Independent School District. Telecommunications Infrastructure Fund Board, \$1,473,611 (1997-1998)

Donna High School, Todd Middle School, and Solis Middle School, Donna (Texas) Independent School District. Telecommunications Infrastructure Fund Board, \$704,052 (1997-1998)

Memorial Middle School and Nellie Schunior Middle School, La Joya Independent School District (Texas). Telecommunications Infrastructure Fund Board, \$293,641 (1997-1998)

Martin High School, Christen Middle School, Cigarroa Middle School, Lamar Middle School, Laredo (Texas) Independent School District. Telecommunications Infrastructure Fund Board, \$1,200,000 (1997-1998).

Lasara Middle School, Lasara (Texas) Independent School District. Telecommunications Infrastructure Fund Board, \$246,210 (1997-1998)

Los Fresnos High School and Resaca Middle School, Los Fresnos (Texas) Consolidated Independent School District. Telecommunications Infrastructure Fund Board, \$500,000 (1997-1998)

Lyford Junior High School, Lyford (Texas) Independent School District. Telecommunications Infrastructure Fund Board, \$354,997 (1997-1998)

Travis Middle School, McAllen (Texas) Independent School District. Telecommunications Infrastructure Fund Board, \$269,139 (1997-1998)

Mission High School, Mission (Texas) Independent School District. Telecommunications Infrastructure Fund Board, \$297,010 (1997-1998)

Progreso High School, Progreso (Texas) Independent School District. Telecommunications Infrastructure Fund Board, \$300,000 (1997-1998)

San Perlita High School, San Perlita (Texas) Independent School District. Telecommunications Infrastructure Fund Board, \$293,490 (1997-1998)

Myra Green Junior High School, Raymondville (Texas) Independent School District. Telecommunications Infrastructure Fund Board, \$225,000 (1997-1998)

Rio Grande City High School, Ringgold Middle School, Gruella Middle School, Rio Grande City (Texas) Independent School District. Telecommunications Infrastructure Fund Board, \$809,934 (1997-1998)

Rio Hondo Junior High School, Rio Hondo (Texas) Independent School District. Telecommunications Infrastructure Fund Board, \$297,024 (1997-1998)

Roma High School, Roma (Texas) Independent School District. Telecommunications Infrastructure Fund Board, \$333,178 (1997-1998)

San Benito High School, Miller Jordan Junior High School, San Benito (Texas) Consolidated Independent School District. Telecommunications Infrastructure Fund Board, \$547,000 (1997-1998)

Santa Maria High School and Santa Maria Middle School, Santa Maria (Texas) Independent School District. Telecommunications Infrastructure Fund Board, \$400,000 (1997-1998)

Salvador High School, United Independent School District (Laredo, Texas). Telecommunications Infrastructure Fund Board, \$250,879 (1997-1998)

Weslaco High School, Cabaza Middle School, Cuellar Middle School, Weslaco (Texas) Independent School District. Telecommunications Infrastructure Fund Board, \$874,242 (1997-1998)

Principals' Assessment and Training Center. Developed for Education Service Center, Region One (Edinburg, Texas). Research team: Roberto Zamora, Leonel Barrera, William H. Parry, and Sylvia D. Hall-Ellis. Texas Principals' Leadership Initiative, Texas Association of Secondary School Principals, Texas Association of Elementary School Principals, and the Sid Richardson Foundation. \$461,439 (1996-1998)

The Texas Library Connection -- Integrating and Sharing Resources. Developed for Hidalgo County Library System (McAllen), Cameron County Library System (Brownsville), South Texas Community College (McAllen), the

University of Texas - Pan American (Edinburg), University of Texas – Brownsville, and Education Service Center, Region One (Edinburg). Research team: William R. McGee, Coordinator, Hidalgo County Library System; Joe Garcia, Director, Cameron County Library System; Michael D. Bell, Library Director, South Texas Community College; Eleanor Folger Foster, University Library, University of Texas - Pan American; Jaime Vela (PI), Director of Instructional Technology and Media Services, Ron Pontius, Instructional Technology, and Fabiola Fuentes, Media Services, Education Service Center, Region One; and Sylvia D. Hall-Ellis. Office of Library Media Services, Technology Services, Texas Education Agency. \$8,000 (1996-1997)

Developing Leadership Communities for Improving Algebra I for All Students. Developed for a partnership of the Region One Statewide Systemic Initiative Team. Research team: Noel Villarreal (PI), Eduardo Cancino, and Sylvia D. Hall-Ellis, Education Service Center, Region One (Edinburg). Texas Statewide Systemic Initiative for Reform in Mathematics, Science and Technology Education to The Charles A. Dana Center for Mathematics and Science Education, The University of Texas at Austin. \$25,000 (1996-1997)

Academics 2000: First Things First -- The Texas Goals 2000. Developed for Edinburg (Texas) CISD. Research team: Hilda Medrano, Dean, College of Education, University of Texas - Pan American (Edinburg); Helen Jones, Director (PI), Gifted and Talented Education, Edinburg CISD; and Sylvia D. Hall-Ellis, Education Service Center, Region One (Edinburg). Texas Education Agency, \$750,000 (1996-2001)

Texas Teachers Empowered for Achievement in Mathematics (TEXTEAM) Institute for Algebra I. Developed for Hidalgo ISD, Jim Hogg (Hebbronville) County ISD, La Joya ISD, La Villa ISD, Lyford ISD, Mission CISD, Pharr-San Juan-Alamo ISD, Rio Hondo ISD, San Isidro ISD, San Perlita ISD, Santa Maria ISD, Santa Rosa, Sharyland ISD, Valley View ISD, Webb (Laredo) CISD, Weslaco ISD, and Zapata County (Zapata) ISD. Research team: Noel Villarreal (PI), Chuck McInteer, Ellen M. Gonzalez, Education Service Center, Region One (Edinburg); and Sylvia D. Hall-Ellis. Charles A. Dana Center for Mathematics and Science Education, University of Texas - Austin, \$15,975 (1996)

Community Learning Center for La Villa, Texas. Developed for Edcouch-Elsa Independent School District. Research team: Noe Gonzalez (PI), Assistant Superintendent, Edcouch-Elsa Independent School District, and Sylvia D. Hall-Ellis. Delta Region Subzone, Rio Grande Valley (Texas) Rural Empowerment Zone, \$325,000 (1996-1997)

Monte Alto (Texas) Community Learning Center. Developed for Monte Alto Independent School District. Research team: Homero A. Diaz (PI), Superintendent, Monte Alto Independent School District, and Sylvia D. Hall-Ellis. Delta Region Subzone, Rio Grande Valley (Texas) Rural Empowerment Zone, \$300,000 (1996-1997)

Community Learning Center for La Villa, Texas. Developed for La Villa Independent School District. Research team: Sam Gonzalez (PI), Assistant Superintendent, La Villa Independent School District; and Sylvia D. Hall-Ellis. Delta Region Subzone, Rio Grande Valley (Texas) Rural Empowerment Zone, \$325,000 (1996-1997)

Building Project for Taylor Elementary. Developed for Mercedes (Texas) Independent School District. Research team: Mrs. Denise Rivera, Librarian, and Eduardo Infante, Principal, Taylor Elementary School; Ismael S. Cantu (PI), Federal Programs Director, Mercedes Independent School District; and Sylvia D. Hall-Ellis. Delta Region Subzone, Rio Grande Valley (Texas) Rural Empowerment Zone, \$375,000 (1996-1997)

Border Education Network (BEN) - Distance Education through Cable Television. Developed for Edinburg (Texas) Consolidated Independent School District. Research team: Noe Torres (PI), Library Media Specialist, Magdalena Rosas, Library Media and Technology Coordinator, Edinburg Consolidated Independent School District; and Sylvia D. Hall-Ellis, Education Service Center, Region One (Edinburg). Edinburg (Texas) Consolidated School District, \$250,000 (1996-1997)

Multiservice One-Stop Open Enrollment Charter School. Developed for the Information Referral Resource Assistance, Inc. (McAllen, Texas). Research team: Pablo Perez and Aguié Pena (PI), Executive Director, Information Referral Resource Assistance, Inc.; Roberto Zamora and Sylvia D. Hall-Ellis, Education Service Center, Region One (Edinburg). Texas Education Agency, \$3,066,000 (1996-2001)

- Project OK: A Community Youth Opportunities Grant for Summer, 1996.* Developed for McAllen (Texas) Independent School District, St. Joseph the Worker Catholic Church, and the Office of Adult Education, Education Service Center, Region One. Research team: Father Bart Flatt, St. Joseph the Worker Catholic Church; Noe Calvillo (PI), Office of Adult Education; Maria Louisa Garcia, McAllen Independent School District; and Sylvia D. Hall-Ellis, Education Service Center, Region One (Edinburg). Texas Protective and Regulatory Agency through the Office of the Mayor, City of McAllen, \$350,000 (1996-2001).
- Early Childhood: a Time of Discovery.* Developed for a partnership of Lasara ISD, Rio Hondo ISD, San Perlita ISD, the School of Education, University of Texas - Brownsville, and Education Service Center, Region One (Edinburg). Research team: Hugo Rodriguez, Dean, School of Education, University of Texas - Pan American; Leonel Barrera and Jack Damron, Field Service Agents, Ellen M. Gonzalez (PI), Administrator for Student Instructional Services, Ruth Solis, Education Specialist in Special Education, and Sylvia D. Hall-Ellis, Education Service Center, Region One (Edinburg). Texas Education Agency, \$722,090 (1996-2001)
- Innovative Gifted and Talented Programs for Early Childhood and Elementary Education Students.* Developed for a partnership of Edinburg (Texas) CISD, the School of Education, University of Texas - Pan American (Edinburg), and Education Service Center, Region One (Edinburg). Research team: Hilda Medrano, Dean, School of Education, University of Texas - Pan American; Helen de la Garza (PI), Director of Elementary Curriculum and Instruction, Edinburg CISD; and Sylvia D. Hall-Ellis. Texas Education Agency, \$750,000 (1996-2001)
- Reading Recovery in Early Elementary Grades.* Developed for a partnership of La Villa (Texas) ISD the School of Education, University of Texas - Pan American (Edinburg), and Education Service Center, Region One (Edinburg). Research team: Hilda Medrano, Dean, School of Education, University of Texas - Pan American; Marcario Salinas (PI), Supervisor of Elementary Curriculum and Instruction, La Villa ISD; and Sylvia D. Hall-Ellis, Education Service Center, Region One. Texas Education Agency, \$750,000 (1996-2001)
- Connected Mathematics Project for Middle and Junior High Students.* Developed for a partnership of Michigan State University, The Charles A. Dana Center for Mathematics and Science Education, The University of Texas at Austin and Region One Statewide Systemic Initiative Team. Research team: Jack Damron, Chuck McInteer, Noel Villarreal (PI), and Sylvia D. Hall-Ellis, Education Service Center, Region One (Edinburg). National Science Foundation through Michigan State University to the Charles A. Dana Center at the University of Texas - Austin, \$539,610 (1996-1999)
- Sharing Resources: Testing the Interlibrary Loan Potential of the Texas Library Connection -- Integrating Media Resources.* Developed under the sponsorship of the Hidalgo County Library System (McAllen) and Education Service Center, Region One (Edinburg). Research team: William H. McGee, Hidalgo County System Coordinator; Fabiola Fuentes, Library Media; Ronald Pontius (PI), Instructional Technology, Education Service Center, Region One; and Sylvia D. Hall-Ellis. Library Media Services Program, Office of Technology Services, Texas Education Agency, \$25,000 (1996-1997)
- State and Federal Adult Education JOBS Program.* Developed for Education Service Center, Region One (Edinburg). Research team: Noe Calvillo (PI), Director, Adult Education Program, and Sylvia D. Hall-Ellis. Adult Education Program, Texas Education Agency, \$532,846 (1995-1996)
- Creating Safe and Drug-Free Schools and Communities.* Developed for a partnership of the Region One Consortium for Safe and Drug-Free Education Environments. Research team: Clara Contreras (PI), Health Specialist, and Sylvia D. Hall-Ellis, Education Service Center, Region One (Edinburg). Texas Education Agency, \$150,000 (1995-1996)
- Developing Leadership Communities for Improving Mathematics Performance for All Students on Title I Campuses.* Developed for a partnership of the Region One Statewide Systemic Initiative Team. Research team: Jack Damron, Chuck McInteer, Noel Villarreal (PI), and Sylvia D. Hall-Ellis, Education Service Center, Region One (Edinburg). Texas Statewide Systemic Initiative for Reform in Mathematics, Science and Technology Education to The Charles A. Dana Center for Mathematics and Science Education, The University of Texas at Austin, \$50,669 (1995-1996)

- The Impact of Library Resource Centers on Academic Achievement in Selected Public Schools in South Texas.* Sylvia D. Hall-Ellis (PI). Developed under the sponsorship of the Department of Library Science, College of Education and Applied Science, Sam Houston State University (Huntsville). Texas Association of School Librarians, Children's Services Round Table, and Young Adults Round Table (Austin, Texas), \$2,500 (1995)
- School Library Media Specialists Fellowship Program.* Sylvia D. Hall-Ellis (PI). Developed under the sponsorship of the Department of Library Science, College of Education and Applied Science, Sam Houston State University (Huntsville, Texas). U.S. Department of Education, HEA Title II-B, Library Education and Human Resource Development Program, \$44,000 (1995-1996)
- Planning for Educational Technology.* Research team: Ruth Ann Riggins (PI), Director of Library Media and Technology Services, Donna (Texas) Independent School District; Noe Torres, Education Service Center, Region One; Patricia G. Bubb, Tech Prep of the Rio Grande Calley, Inc; Michael D. Bell, South Texas Community College; and Sylvia D. Hall-Ellis, Sam Houston State University. Developed under the sponsorship of Donna (Texas) Independent School District, Education Service Center, Region One (Edinburg), Tech Prep of the Rio Grande Valley, Inc. (Harlingen), South Texas Community College (McAllen), and the Department of Library Science, Sam Houston State University (Huntsville). Funded through Infusion of Educational Technology Planning Grant Program (H.B. 18: Models). Texas Education Agency, \$18,000 (1993-1994)
- The Impact of Library Resource Centers on Academic Achievement in Selected Public Schools in South Texas.* Sylvia D. Hall-Ellis (PI) and Mary Ann Berry. Developed under the sponsorship of the Department of Library Science, College of Education and Applied Science, Sam Houston State University (Huntsville). Sam Houston State University Research Enhancement Fund, \$7,500 (1993-1994)
- Electronic Mail Resource Sharing System: Management and Operation of the Iowa Computer-Assisted Network.* State Library of Iowa, \$294,000 (1986-1993)
- The Iowa Locator: A CD-ROM Resource Sharing Tool.* State Library of Iowa, \$567,000 (1986-1992)
- Statewide Database Development: An OCLC Tape Analysis To Determine Feasibility.* State Library of South Dakota, \$15,000 (1987)
- The Iowa Locator: A Feasibility Study.* State Library of Iowa, \$50,000 (1986)
- Electronic Mail Resource Sharing System: A Feasibility Study for Libraries in the State of Iowa.* State Library of Iowa, \$5,000 (1985)
- Access Pennsylvania: A Feasibility Study.* State Library of Pennsylvania, \$50,000 (1984)
- Automating Library Administrative and Management Tasks: Procurement and Distribution of Microcomputer Systems for District Library Centers in the Commonwealth of Pennsylvania.* State Library of Pennsylvania, \$495,000 (1982)
- Sharing Serial Titles Resources: Procurement and Distribution of Microfiche Readers for 550 Libraries in the Commonwealth of Pennsylvania.* State Library of Pennsylvania, \$500,000 (1982)
- Electronic Mail System: A Pilot Project for Libraries throughout the Commonwealth of Pennsylvania.* State Library of Pennsylvania, \$125,000 (1982)
- Literacy Program for Adults in Rural Upstate New York State: Program Outreach and Evaluation - Phase 3.* Appalachian Regional Commission, \$50,000 (1981)
- Database Building: A Cooperative Project of the Finger Lakes Library System (Ithaca), Four County Library System (Binghamton), and the Southern Tier Library System (Corning).* New York State Library, \$450,000 (1980-1985)

Faces of the Southern Tier: A Professional Photographer-in-Residence. New York State National Endowment for the Humanities, \$25,000 (1980)

Literacy Program for Adults in Rural Upstate New York State: Program Implementation - Phase 2. Appalachian Regional Commission, \$50,000 (1980)

Small Business Resources Center: A Pilot Project for Rural Public Libraries. New York State Library, \$50,000 (1980)

Media Programming: A Professional Development Program for Public Librarians in Upstate New York: A Program in Allegheny, Chemung, Schuyler, Steuben, and Yates Counties. New York State Library, \$35,000 (1979)

Information and Library Resources for Inmates and Prisoners in Selected Upstate New York Facilities: A Cooperative Program in Allegheny, Chemung, Schuyler, Steuben, and Yates Counties. New York State Library, \$25,000 (1979)

Library Resources for Homebound Adults in Upstate New York: An Outreach Program in Allegheny, Chemung, Schuyler, Steuben, and Yates Counties. New York State Library, \$40,000 (1979)

Literacy Program for Adults in Rural Upstate New York State: Program Initiation and Establishment - Phase 1. Funded by the Appalachian Regional Commission. Awarded to the Corning (New York) Public Library, \$50,000 (1979)

Information Reference Services to Homebound Adults. New York State Library, \$31,000 (1978)

Books-By-Mail Services to Homebound Adults. New York State Library, \$31,000 (1978)

System Headquarters Services and Programs for Public Libraries in District 10. Funded through Library Services and Construction Act Title I. Texas State Library and Historical Commission, \$880,000 (1976)

County Library Development Grant for Atascosita County. Funded through Library Services and Construction Act Title I. Texas State Library and Historical Commission, \$15,000 (1976)

Spanish Language Materials Collection Development Program. Texas State Library and Historical Commission, \$40,000 (1975)

Establishment of System Headquarters for Alamo Regional Library System (District 10) Headquartered at the San Antonio (Texas) Public Library. Texas State Library and Historical Commission, \$800,000 (1975)

SELECTED CONSULTANTSHIPS

Project Strategic Planning & Funding Proposal Development

Walden University, 2015.

Pikes Peak Library District, 2014.

Douglas County Public Libraries, 2011-2012.

Denver School for Science and Technology, 2008-2011.

Johnson & Wales University, Denver Campus, 2007-2009.

Challenges, Choices, and Images K-12 Charter School, Denver Public Schools, 2007.

Denver Medical Library, Inc., 2006-2010.

Bemis Public Library (Littleton), Ergonomic Design and Facilities Enhancement Consultant, 2003.

Curtis Park Community Center (Denver), Community Technology Center Evaluation and Proposal Development Consultant, 2003.

Colorado Community Based Research Network (Denver), Funding Research Associate, 2002-

Our Lady of the Rosary Academy (Edgewater), Learning Resource Center Development Project Consultant, 2001-

University of Southern Colorado (Pueblo). Technology Integration and Curriculum Enhancement into Higher Education Learning Environment. Proposal Development Consultant, 2000.

Jefferson County Library System (Lakewood), 1999-2000.

Southeastern BOCES (Lamar, CO). Distance Learning Curriculum Content Development Project. Proposal Development Consultant, 1998-2004.

Cheyenne Mountain School District 12 (Colorado Springs, CO). Technology Integration into Elementary Writing Curriculum Project. Proposal Development Consultant, 1998.

Telecommunications Infrastructure Fund Board Round #2 Application, 1997. Technical assistance to the following: La Villa (Texas) Independent School District; Mirando City (Texas) Independent School District; Monte Alto (Texas) Independent School District; San Isidro (Texas) Independent School District.

Telecommunications Infrastructure Fund Board Round #1, 1996. Technical assistance to the following: Brownsville (Texas) Independent School District; Donna (Texas) Independent School District; Edinburg (Texas) Consolidated Independent School District; Harlingen (Texas) Consolidated Independent School District; Jim Hogg County Independent School District (Hebbronville, Texas); La Feria (Texas) Independent School District; La Joya (Texas) Independent School District; La Villa (Texas) Independent School District; Los Fresnos (Texas) Consolidated Independent School District; Progreso (Texas) Independent School District; Raymondville (Texas) Independent School District; Rio Hondo (Texas) Independent School District; San Benito (Texas) Independent School District; Sharyland Independent School District (Mission, Texas); Weslaco (Texas) Independent School District; Zapata (Texas) County Independent School District.

South Texas Community College (McAllen). Strategy Development to Meet the Technology Instructional Needs for Vocational, School-To-Work and Academic Programs, 1994-2000. Development Consultant.

Donna (Texas) Independent School District. Planning for the Infusion of Technology in Middle Schools Serving High At-Risk Students, 1994-1995. Research Associate.

Pettus (Texas) Independent School District. Planning for District-wide Automation in School Library Media Centers: Preparation of Data, and CD-ROM Hardware/Software Configuration Evaluation, 1994. Principal Investigator.

Fort Bend Independent School District (Sugar Land, TX). Planning for District-wide Automation in School Library Media Centers, Preparation of Data, and CD-ROM Hardware/Software Configuration Evaluation, 1994-1995. Principal Investigator.

Northern Waters Library Services (Ashland, WI). Professional Consulting Services to Make Recommendations on the Development of System-Wide Efforts of the Northern Waters Library Service, 1988-1989. Research Associate.

State Library of Iowa (Des Moines). The Iowa Locator Compact Disc to Support Multi-Type Libraries Resource Sharing including Database Design, Building, Production, and Distribution, 1986-1991. Project Director.

State Library of Iowa (Des Moines). Iowa Computer-Assisted Network Development, Enhancement, and Operation, 1985-1992. Technical Director.

State Library of South Dakota (Pierre). Statistical Sampling and Analysis of Multi-Institutional OCLC Archive Tape for Statewide Online Database Building, 1985-1986. Research Associate.

District of Columbia Public Library (Washington, DC). Planning Document for the Retrospective Conversion of Bibliographic Records and Automation Issues in the 1990's, 1984-1985. Research Associate.

State Library of Pennsylvania (Harrisburg). Database Development for High School Libraries, 1984-1985. Research Associate.

MINITEX (Minneapolis, MN). Workshops for Retrospective Conversion, Bar Coding, Library Statistics, and OCLC Serials Format, 1985. Presenter and Research Associate.

ABC Film Consortium (Altoona, Bellefonte, Johnstown, PA). Database Building, System Design, and Implementation of Online Film Booking System, 1983-1985. Database Manager.

Library Automation -- System Design & Implementation

Douglas County Library District (Castle Rock, CO). Library Automation Technical and System Performance Specifications, 2001.

Pharr-San Juan-Alamo Independent School District (Pharr, TX). Library Automation Technical and System Performance Specifications, 1997. Project Development Consultant.

Harlingen (Texas) Independent School District. Planning for District-wide Automation in Junior High School Library Media Centers: Preparation of Data, and CD-ROM Hardware/Software Configuration Evaluation, 1996. Principal Investigator.

Sharyland (Texas) Independent School District. Design and Construction of New Elementary School Library and Technology Resources Center, 1995-1996. Principal Investigator.

South Texas Independent School District (Mercedes, TX). Design and Construction of a New High School Library and Technology Resources Center, 1995-1996. Principal Investigator.

Citizens' Library (Washington, PA). Online Community Resources Files: Design and Implementation, 1984.
Research Associate.

Altoona (Pennsylvania) Hospital. Integrated Online System Upgrade Study, 1984. Research Associate.

State Library of South Dakota (Pierre). Automation Plan and State Database Development, 1982-1983. Principal Investigator.

State Library of Pennsylvania (Harrisburg). COM Production and Preparation of the Technical Specifications Document, Procurement, and Distribution of Microcomputers in the Commonwealth of Pennsylvania, 1983-1984. Research Associate.

Altoona (Pennsylvania) Area Public Library. Integrated System (Circulation/Online Catalog) Study, 1982-1983. Principal Investigator.

COPSCAULD (Council of Pennsylvania State College and University Library Directors, Edinboro, PA). Design of Online Media Catalog, 1982. Principal Investigator.

Erie (Pennsylvania) County Library System. Operations Research and Design for Automated Circulation, Hardware Upgrade and Re-Retrospective Conversion, 1982. Research Associate.

Michigan Library Consortium (Lansing, MI). Tape Management System Design and Implementation, 1982-1984. Research Associate.

State Library of Pennsylvania (Harrisburg). Preparation of the Technical Specifications Document, Procurement and Distribution of Microfiche Readers in the Commonwealth of Pennsylvania, 1982. Research Associate.

Community College of Allegheny County, Allegheny Campus (Pittsburgh, PA). Integrated Systems Study, 1981. Principal Investigator.

Community College of Allegheny County, South Campus (West Mifflin, PA). Retrospective Conversion Training Program for Handicapped Students, 1981. Technical Director.

Southern Tier Library System (Corning, NY). OCLC Acquisitions Subsystem Evaluation, 1981. Principal Investigator.

South Central Reference and Research Council (Ithaca, NY). South Central Regional Delivery System, 1980. Principal Investigator.

Southern Tier Library System (Corning, NY). Newspapers on Microfilm in the Chemung-Southern Tier Library System, 1979-1981. Principal Investigator.

Cataloging & Bibliographic Database Building

Challenges, Choices, and Images K-12 Charter School, Denver Public Schools, 2007.

Denver Medical Library, Inc., 2006-2010.

Ricks Gifted and Talented School Library, 2005-

American Humane Society (Englewood), 2004-2006.

Fisher Early Learning Center Library, 2004-

Colorado Community Based Research Network (Denver), 2004-

Boulder Valley School District (Boulder), 2002-2003.

Douglas Public Library District (Castle Rock), 2001-2002.

Bibliographic Center for Research, Inc. (Denver). Original Cataloging, 2001-2003 & 1992-1993. Professional Cataloger. Libraries include Arapahoe Library District (Centennial); Clarke College (Clarke, IA); Kaiser Permanente Center for Health Research (Portland, KS); Douglas County Library System (Carson City, NV); Grinnell College (Grinnell, IA); Kansas State University (Manhattan, KS); Kansas State Library (Topeka, KS); McPherson College (McPherson, KS); Newman University (Wichita, KS); Montana Technical University (Helena, MT); Montana State Library (Helena, MT); University of Texas Southwest Medical Center Library (Dallas, TX); Community College of Southern Nevada (Las Vegas, NV); Pikes Peak Library District (Colorado Springs); Mesa Community College (Grand Junction); Coe College (Cedar Rapids, IA); Briar Cliff College (Sioux City, IA); Tri-Care Health Systems (Aurora); The Penrose-St. Francis Healthcare System (Colorado Springs); Westminster Public Library (Westminster); Lutheran Medical Center Medical Library (Wheat Ridge); American Heritage Center, University of Wyoming (Laramie, WY); National Wildlife Research Center Library (Lakewood); University of Colorado Health Sciences Center, Denison Memorial Library (Denver); Water Resources Library, Denver District Office, Bureau of Land Management (Lakewood); Mesa State Community College Learning Resources Center (Pueblo); Front Range Community College Learning Resources Center (Westminster).

Colorado Historical Society Library (Denver). Original Cataloging of Serials for Multi-Institutional Union Listing Project, 1993. Technical Services Associate. Institutional partners: Denver Art Museum, Denver Museum of Natural History Library, and Denver Botanical Gardens Library.

Arapahoe Library District (Centennial). Original Cataloging of Major Media, 1991.

Original Cataloging Projects: Davis and Elkins College (Elkins, WV), 1989-1990; Waldorf College (Forest City, IA), 1989-1990; Kennametal Corporation (Latrobe, PA), 1984-1985; Pennsylvania Public Libraries Film Center (Harrisburg), 1982-1985.

Retrospective Conversion Projects: North Central Regional Library Service (Mason City, IA), 1987-1988; Southeastern Library Services (Davenport, IA), 1986-1987; Virginia Theological Seminary (Alexandria), 1984-1985; California University of Pennsylvania (California, PA), 1984-1985; Kennametal Corporation (Latrobe, PA), 1984-1985; West Virginia University (Morgantown), 1983-1985; Altoona Area Public Library (Altoona, PA), 1983-1984; George Washington University (Washington, DC), 1983-1984; Indiana University of Pennsylvania (Indiana, PA), 1983-1985; Health Education Center (Pittsburgh), 1983-1984; Central Pennsylvania District Library Center (Bellefonte, PA), 1982-1985; Duquesne University Law School Library (Pittsburgh), 1982-1983; Allegheny County Law Library (Pittsburgh), 1982-1984; Calgon Technical Information Center (Pittsburgh), 1982; Dow Corning Corporation, Technical Information Center (Midland, MI), 1982-1983; Tri-System Public Library Retrospective Conversion Project (Binghamton, Corning, and Ithaca, NY), 1978-1981, Technical Project Director.

Updated May 2021