



US005761647A

United States Patent [19] Boushy

[11] Patent Number: **5,761,647**
[45] Date of Patent: **Jun. 2, 1998**

[54] NATIONAL CUSTOMER RECOGNITION SYSTEM AND METHOD

[75] Inventor: **John Michael Boushy**, Germantown, Tenn.

[73] Assignee: **Harrah's Operating Company, Inc.**, Memphis, Tenn.

[21] Appl. No.: **653,436**

[22] Filed: **May 24, 1996**

[51] Int. Cl.⁶ **G06F 17/60**

[52] U.S. Cl. **705/10; 463/25; 463/29**

[58] Field of Search **463/25, 29; 395/210; 705/10**

[56] References Cited

U.S. PATENT DOCUMENTS

4,531,187	7/1985	Uhland	364/412
4,755,941	7/1988	Bacchi	364/412
5,007,641	4/1991	Seidman	273/138 A
5,080,364	1/1992	Seidman	273/138 A
5,129,652	7/1992	Wilkinson	273/139
5,179,517	1/1993	Sarbin et al.	364/410
5,257,179	10/1993	DeMar	364/410
5,265,874	11/1993	Dickinson et al.	273/138
5,287,269	2/1994	Dorrough et al.	364/408
5,321,241	6/1994	Craine	235/380
5,429,361	7/1995	Raven et al.	273/138 A
5,470,079	11/1995	LeStrange et al.	273/138 A

OTHER PUBLICATIONS

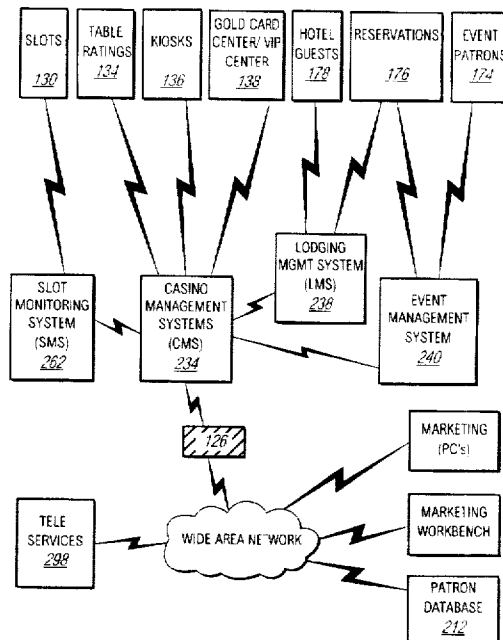
"Harrah's Casinos Introduces Two 'Firts' For The Casino Industry", PR Newswire, Aug. 23, 1993.

Primary Examiner—Edward R. Cosimano
Assistant Examiner—Junghoon Kenneth Oh
Attorney, Agent, or Firm—Fenwick & West LLP

[57] ABSTRACT

A system and method for implementing a customer tracking and recognition program that encompasses customers' gaming and non-gaming activity alike at a plurality of affiliated casino properties. Customer information is accumulated at each affiliated casino through one or more LAN-based management systems, updated to a central patron database (CPDB) that is coupled to each casino LAN through a WAN, and made available to each affiliated casino property as needed. Customer accounts are automatically activated and provided with data from the CPDB when a customer from one casino property first visits an affiliated casino property. Customer accounts are updated with new activity data whenever a management system associated with the casino receives customer data from input devices, such as card readers, workstations, and dumb terminals, located at various venues throughout the casino. Customers are awarded points, based on their tracked activity at all affiliated casino properties. The point awards have a monetary value and are redeemable for gifts, meals, cash and the like, at any of the casino properties. The point awards may embody different promotional schemes in which point awards are adjusted to target different casino properties or different venues within a casino. Summary customer data, including point levels, is regularly updated to reflect ongoing customer activity at the casino property. This data is made available to employees at any affiliated casino property, as needed, to personalize customer services.

28 Claims, 14 Drawing Sheets



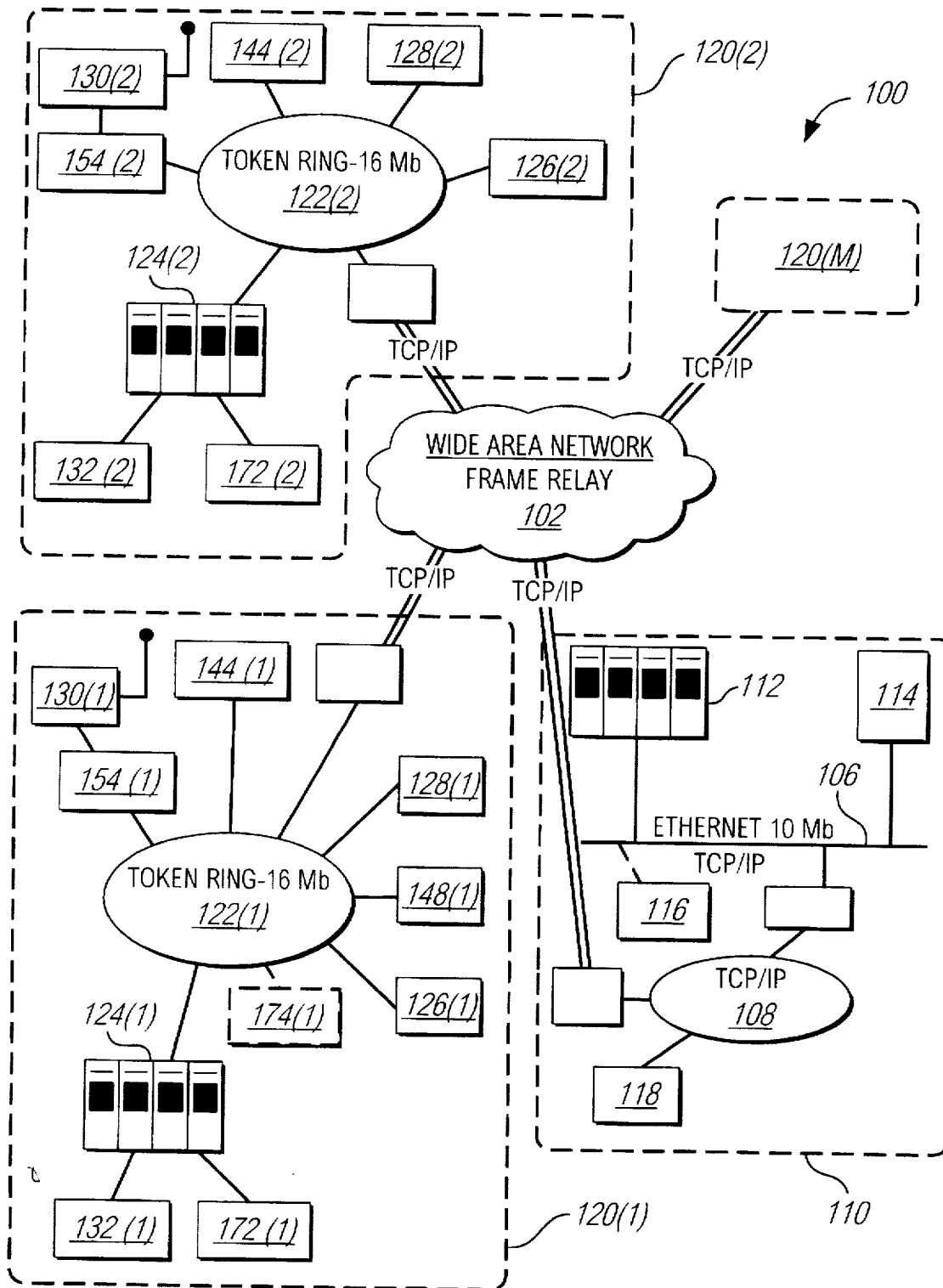


FIG. 1

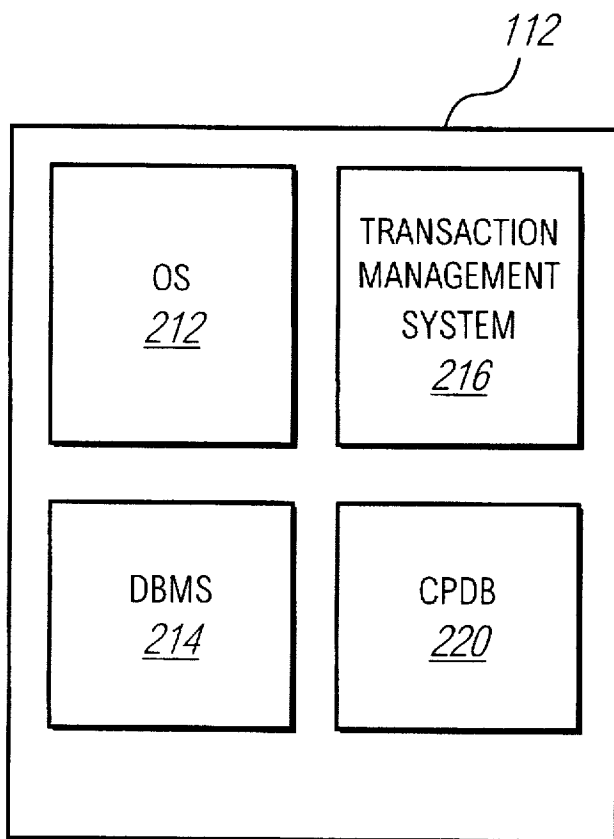


FIG. 2A

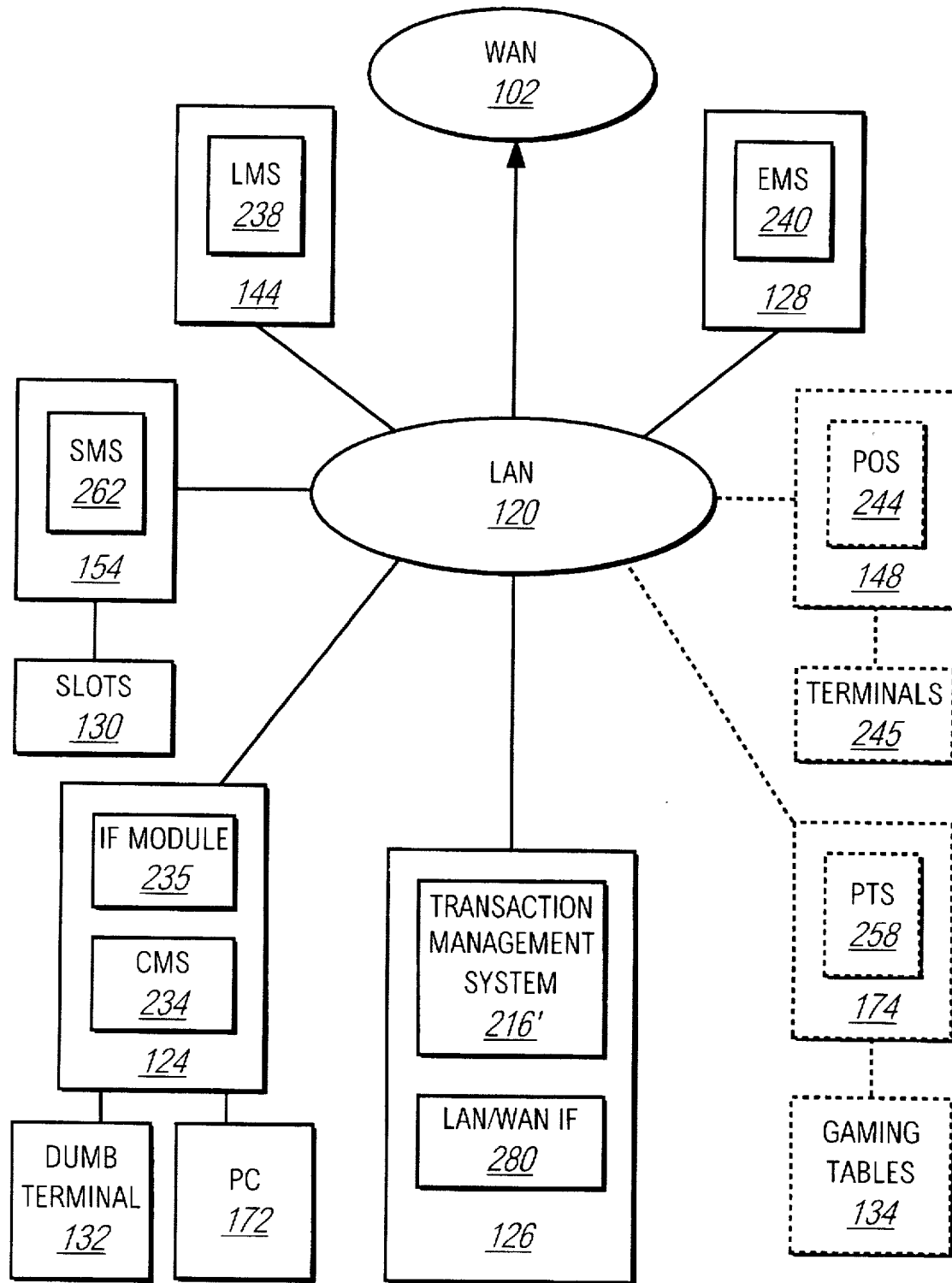


FIG. 2B

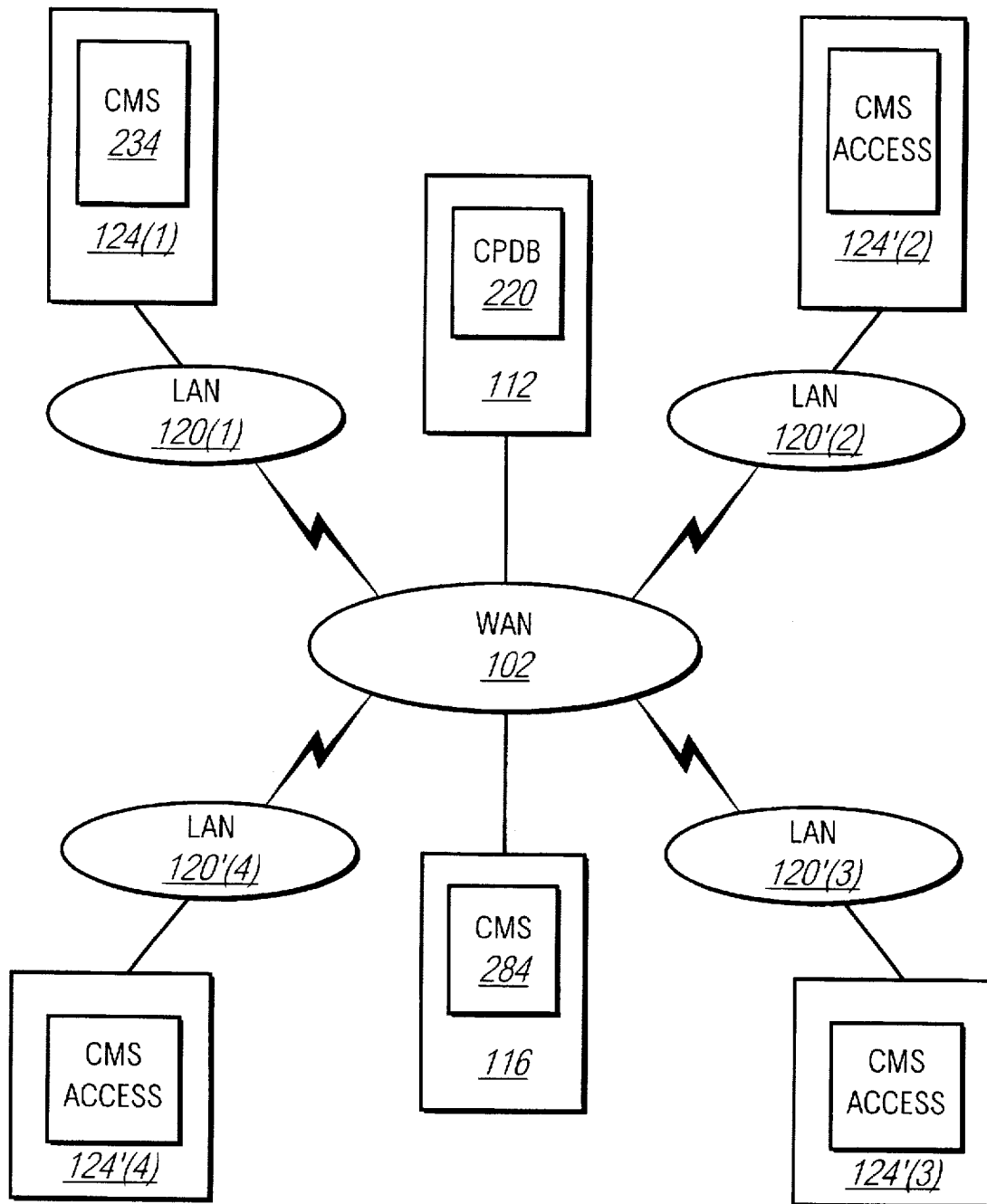


FIG. 2C

Explore Litigation Insights

Docket Alarm provides insights to develop a more informed litigation strategy and the peace of mind of knowing you're on top of things.

Real-Time Litigation Alerts



Keep your litigation team up-to-date with **real-time alerts** and advanced team management tools built for the enterprise, all while greatly reducing PACER spend.

Our comprehensive service means we can handle Federal, State, and Administrative courts across the country.

Advanced Docket Research



With over 230 million records, Docket Alarm's cloud-native docket research platform finds what other services can't. Coverage includes Federal, State, plus PTAB, TTAB, ITC and NLRB decisions, all in one place.

Identify arguments that have been successful in the past with full text, pinpoint searching. Link to case law cited within any court document via Fastcase.

Analytics At Your Fingertips



Learn what happened the last time a particular judge, opposing counsel or company faced cases similar to yours.

Advanced out-of-the-box PTAB and TTAB analytics are always at your fingertips.

API

Docket Alarm offers a powerful API (application programming interface) to developers that want to integrate case filings into their apps.

LAW FIRMS

Build custom dashboards for your attorneys and clients with live data direct from the court.

Automate many repetitive legal tasks like conflict checks, document management, and marketing.

FINANCIAL INSTITUTIONS

Litigation and bankruptcy checks for companies and debtors.

E-DISCOVERY AND LEGAL VENDORS

Sync your system to PACER to automate legal marketing.