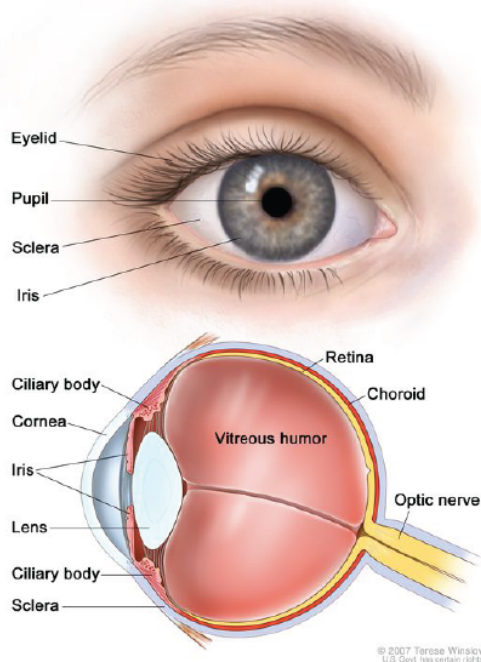




ciliary body

(SIH-lee-ayr-ee BAH-dee)

A part of the middle layer of the wall of the eye. The ciliary body is found behind the iris and includes the ring-shaped muscle that changes the shape of the lens when the eye focuses. It also makes the clear fluid that fills the space between the cornea and the iris.



Anatomy of the eye, showing the outside and inside of the eye including the eyelid, pupil, sclera, iris, cornea, lens, ciliary body, retina, choroid, vitreous humor, and optic nerve.

Search NCI's Dictionary of Cancer Terms

Starts with Contains

Enter keywords or phrases

Search

