



FREQUENTLY ASKED QUESTIONS

- + Was a trial conducted between LUMIFY and currently available OTC redness reliever eye drops?

- + What % of benzalkonium chloride (BAK) preservative is in LUMIFY?

- + Were there any incidences of allergic reaction to low dose brimonidine tartrate?

- + What types of patients/specialties would LUMIFY be good for?

- + How will LUMIFY affect pupil dilation?

- + What is the difference between LUMIFY and current OTC redness relievers?

- + Can LUMIFY be used to counteract rebound redness from other glaucoma treatments?

- + Was there an intraocular pressure (IOP) lowering effect?

- + Does LUMIFY cause rebound redness and tachyphylaxis similar to other OTC redness relievers?

- + How long does LUMIFY last?

- + How quickly does LUMIFY work?

Privacy - Terms

Back to [LUMIFY HOME](#) for Consumers



Home

Clinical Information

Ready-to-Use Resources



+ How did LUMIFY obtain FDA approval?

FAST ACTING AND LONG LASTING EFFICACY¹

LUMIFY is so effective at reducing redness, your patients can see the difference almost immediately.*

95% Reported significant improvement in just **one minute**[†]

79% Maintained significant redness reduction at **eight hours**[†]



Before

Representative of mean pre-instillation score: 1.8



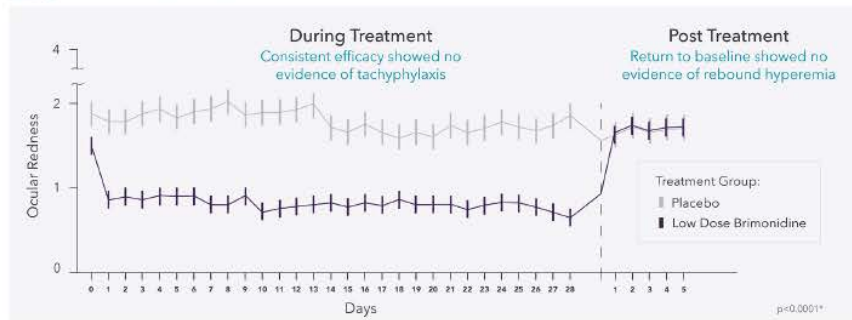
After

Representative of mean 5 minute post-instillation: 0.5

*Simulation to reflect average clinical trial results.
†Based on patient reported findings from Phase 3.

LOW RISK FOR TACHYPHYLAXIS OR REBOUND HYPEREMIA¹

Phase III efficacy study²:



Overall, **six clinical studies** were conducted in over 600 patients to evaluate safety and efficacy, with **no evidence of allergic reactions** reported.

¹McLaurin E, Cavet ME, Gomes PJ, Ciolini JB. Brimonidine ophthalmic solution, 0.025% for reduction of ocular redness. Optom Vis Sci. 2018. In press. One reported case of rebound hyperemia in Phase III Safety Study. ²Phase III was a double-blinded, randomized, placebo-controlled study, n=60.

Back to [LUMIFY HOME](#) for Consumers



Home

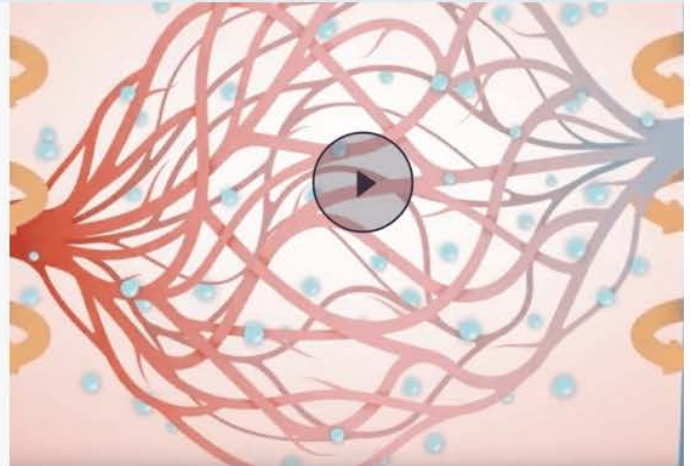
Clinical Information

Ready-to-Use Resources



LUMIFY is the only OTC redness reliever that primarily constricts the venule.

[WATCH THE VIDEO >](#)



DRUG FACTS

Directions

Adults and children 5 years of age and over:

- instill 1 drop in the affected eye(s) every 6-8 hours
- do not use more than 4 times daily
- remove contact lenses before use
- wait at least 10 minutes before re-inserting contact lenses after use
- if using other ophthalmic products while using this product, wait at least 5 minutes between each product
- to avoid contamination, do not touch tip of container to any surface
- replace cap after each use

Children under 5 years of age: consult a doctor

[See full Drug Facts](#)

Join our professional mailing list

SUBSCRIBE







Home





Clinical Information

Privacy - Terms

Back to [LUMIFY HOME](#) for Consumers

LUMIFY
REDNESS RELIEVER EYE DROPS

[Home](#) [Clinical Information](#) [Ready-to-Use Resources](#)    [Exp](#)  [es](#)

QUESTIONS?
[Call 800-828-9030](tel:800-828-9030)

BAUSCH + LOMB

[Visit BAUSCH.com](#)

[Privacy Policy](#)

[Legal Notice](#)

[Contact Us](#)

All information and materials on this site relate to the U.S. only unless otherwise indicated

©2022 Bausch & Lomb Incorporated or Its Affiliates. LUM.0145 USA.20 CALIFORNIA RESIDENTS: [DO NOT SELL MY PERSONAL INFORMATION](#)