



US008687536B2

(12) **United States Patent**  
**Michaelis**

(10) **Patent No.:** **US 8,687,536 B2**  
(45) **Date of Patent:** **Apr. 1, 2014**

(54) **METHOD AND APPARATUS TO CREATE MULTICAST GROUPS BASED ON PROXIMITY**

2006/0034215 A1\* 2/2006 Moon et al. .... 370/328  
2006/0072532 A1 4/2006 Dorenbosch et al.  
2007/0001853 A1\* 1/2007 Otranen ..... 340/572.1  
2009/0313689 A1\* 12/2009 Nystrom et al. .... 726/9

(75) Inventor: **Oliver Michaelis**, San Diego, CA (US)

**FOREIGN PATENT DOCUMENTS**

(73) Assignee: **QUALCOMM Incorporated**, San Diego, CA (US)

JP 2006054616 A 2/2006  
JP 2008524906 A 7/2008  
WO WO2006064480 A1 6/2006

(\* ) Notice: Subject to any disclaimer, the term of this patent is extended or adjusted under 35 U.S.C. 154(b) by 848 days.

**OTHER PUBLICATIONS**

(21) Appl. No.: **12/035,358**

International Search Report—PCT/US08/054783—International Search Authority—European Patent Office—Jun. 24, 2008.  
Written Opinion—PCT/US08/054783—International Search Authority—European Patent Office, Munich—Jun. 24, 2008.

(22) Filed: **Feb. 21, 2008**

\* cited by examiner

(65) **Prior Publication Data**

US 2008/0219227 A1 Sep. 11, 2008

**Related U.S. Application Data**

(60) Provisional application No. 60/891,231, filed on Feb. 23, 2007.

(51) **Int. Cl.**  
**H04H 20/71** (2008.01)  
**H04L 12/28** (2006.01)

(52) **U.S. Cl.**  
USPC ..... **370/312; 370/390; 370/432**

(58) **Field of Classification Search**  
None  
See application file for complete search history.

(56) **References Cited**

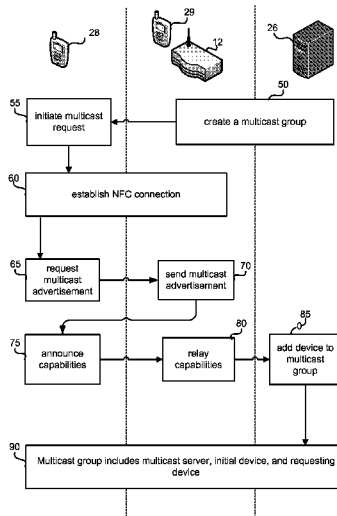
**U.S. PATENT DOCUMENTS**

6,988,146 B1 1/2006 Magret et al.  
2005/0063409 A1\* 3/2005 Oommen ..... 370/432  
2005/0138369 A1\* 6/2005 Lebovitz et al. .... 713/163  
2006/0029078 A1\* 2/2006 Lu et al. .... 370/395.2

(57) **ABSTRACT**

Devices and methods use close range communication links, such as near field communication (NFC) protocol links, to enable users to authenticate mobile devices to one another to create or expand secure multicast groups. Once the two or more devices establish a close range communication peer-to-peer link the devices exchange multicast group communication data sufficient to permit the devices to receive or send multicast messages. Long range wireless or wired network communication links are then used for multicast message communications. Proximity limits of the close range communication P2P link enables mutual trust to be presumed among devices, reducing the need for security and authentication signaling. The limited range of close range communication P2P links renders multicast groups established in this manner less vulnerable to eavesdropping and intrusion. Embodiments enable users to initiate secure multicast group participation merely by bringing two or more devices into close proximity.

**40 Claims, 8 Drawing Sheets**



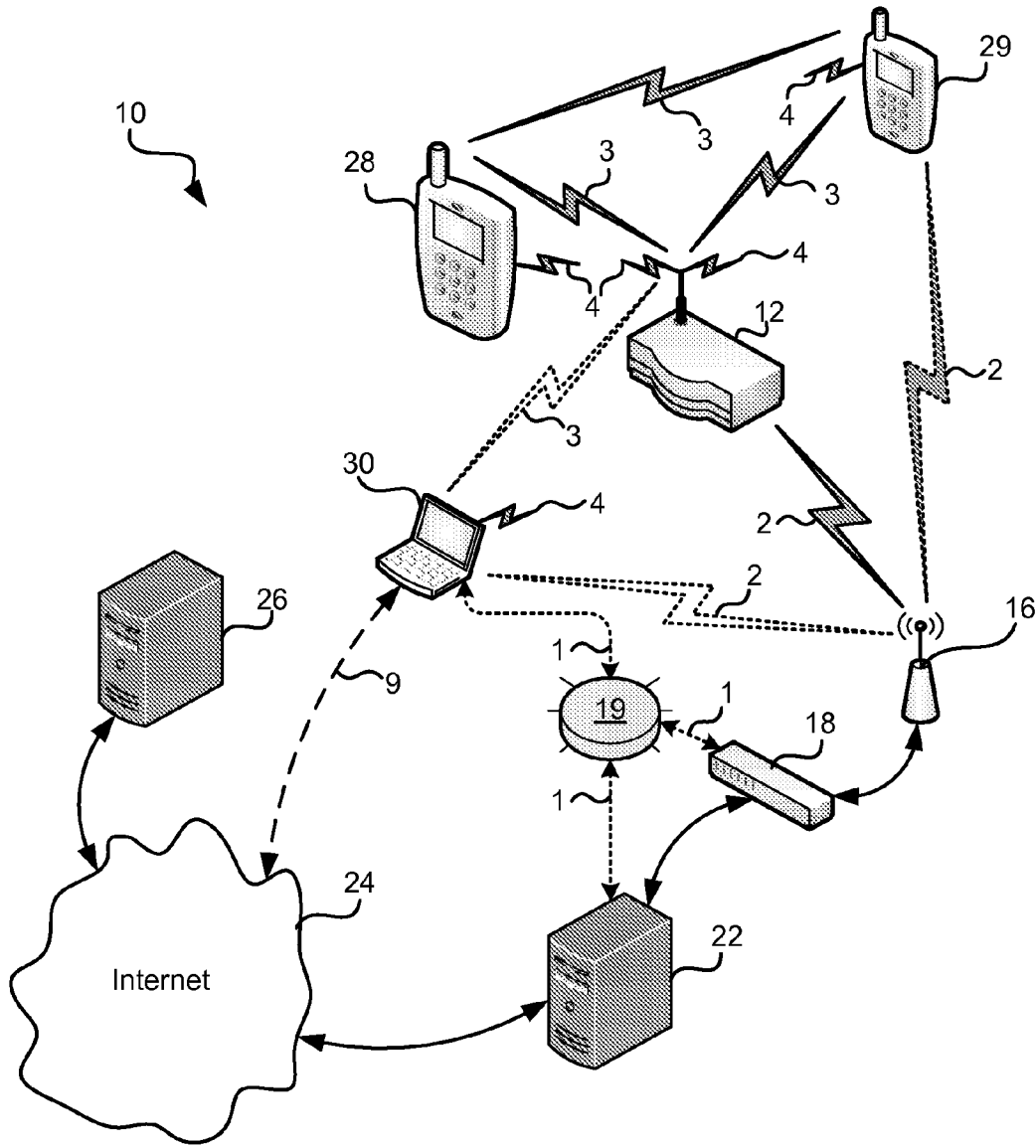


FIG. 1

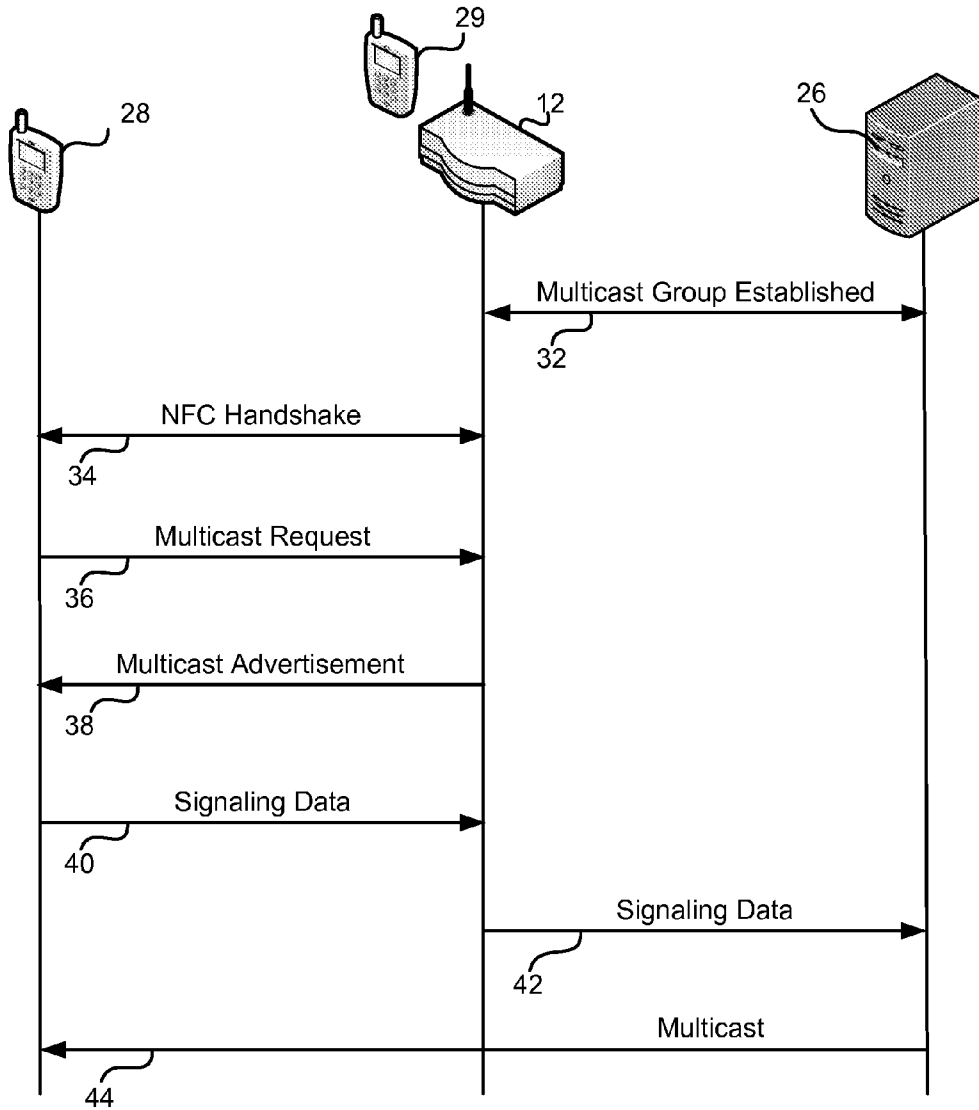


FIG. 2

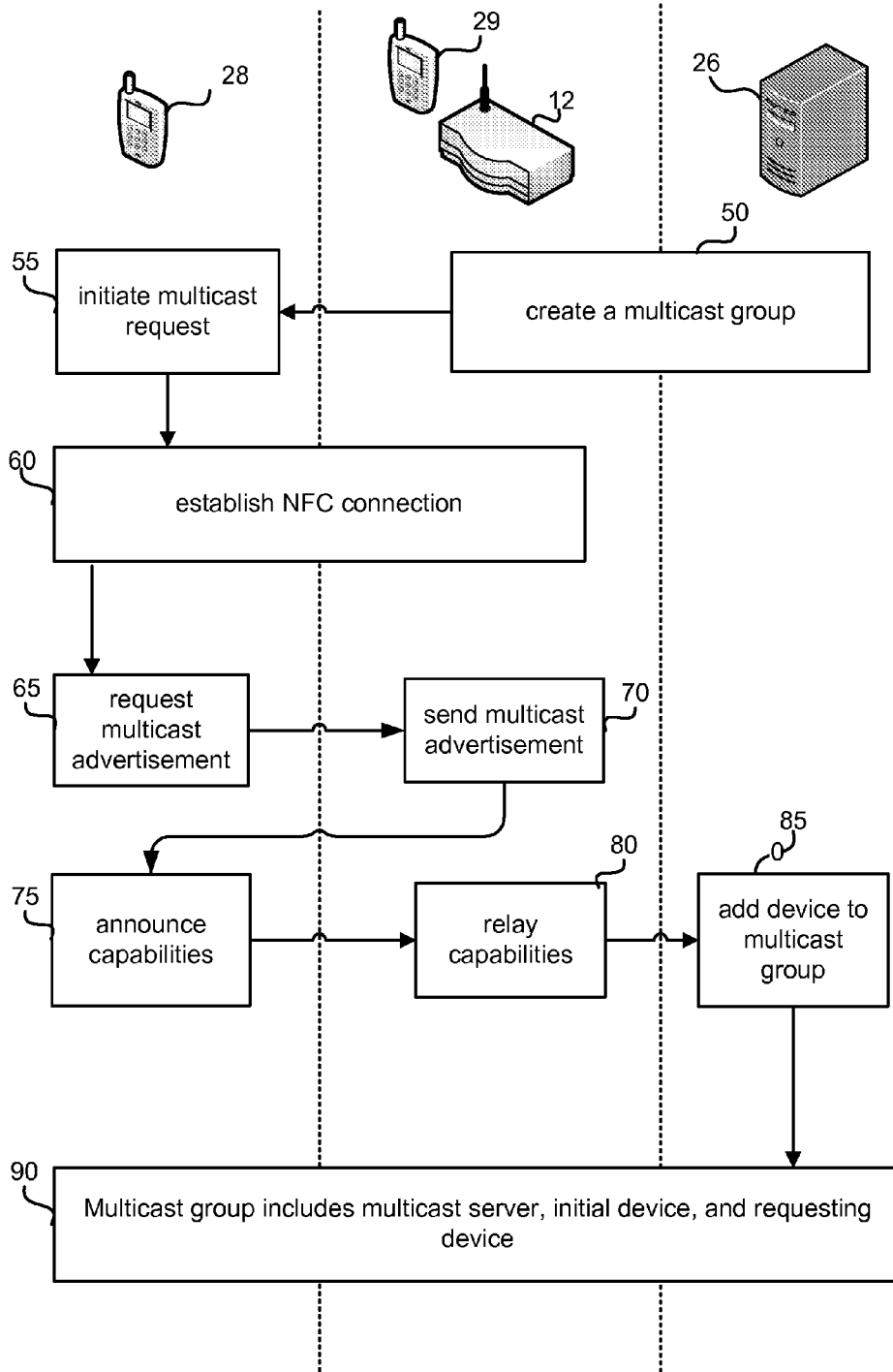


FIG. 3

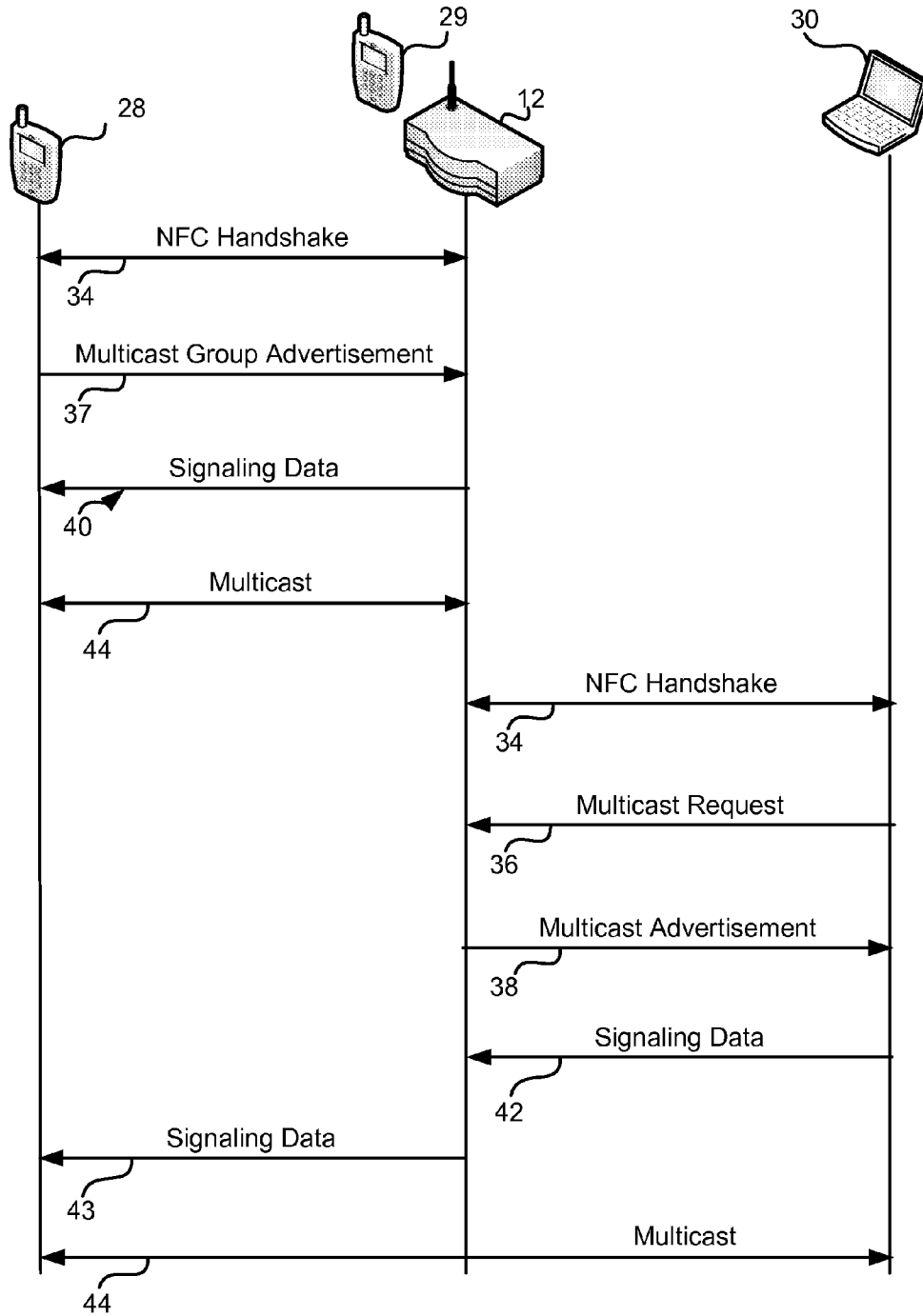


FIG. 4

# Explore Litigation Insights

Docket Alarm provides insights to develop a more informed litigation strategy and the peace of mind of knowing you're on top of things.

## Real-Time Litigation Alerts



Keep your litigation team up-to-date with **real-time alerts** and advanced team management tools built for the enterprise, all while greatly reducing PACER spend.

Our comprehensive service means we can handle Federal, State, and Administrative courts across the country.

## Advanced Docket Research



With over 230 million records, Docket Alarm's cloud-native docket research platform finds what other services can't. Coverage includes Federal, State, plus PTAB, TTAB, ITC and NLRB decisions, all in one place.

Identify arguments that have been successful in the past with full text, pinpoint searching. Link to case law cited within any court document via Fastcase.

## Analytics At Your Fingertips



Learn what happened the last time a particular judge, opposing counsel or company faced cases similar to yours.

Advanced out-of-the-box PTAB and TTAB analytics are always at your fingertips.

## API

Docket Alarm offers a powerful API (application programming interface) to developers that want to integrate case filings into their apps.

## LAW FIRMS

Build custom dashboards for your attorneys and clients with live data direct from the court.

Automate many repetitive legal tasks like conflict checks, document management, and marketing.

## FINANCIAL INSTITUTIONS

Litigation and bankruptcy checks for companies and debtors.

## E-DISCOVERY AND LEGAL VENDORS

Sync your system to PACER to automate legal marketing.