



US005593431A

United States Patent [19]

[11] Patent Number: **5,593,431**

Sheldon

[45] Date of Patent: **Jan. 14, 1997**

[54] **MEDICAL SERVICE EMPLOYING MULTIPLE DC ACCELEROMETERS FOR PATIENT ACTIVITY AND POSTURE SENSING AND METHOD**

“Airbags Boom When IC Accelerometer Sees 50G”, *Electronic Design*, Aug. 8, 1991.

“Monolithic Accelerometer with Signal Conditioning”, Rev. O, published Jun. 1993 by Analog Devices, Inc.

[75] Inventor: **Todd J. Sheldon**, Eagan, Minn.

Primary Examiner—William E. Kamm
Assistant Examiner—Scott M. Getzow
Attorney, Agent, or Firm—Reed A. Duthler; Harold R. Patton

[73] Assignee: **Medtronic, Inc.**, Minneapolis, Minn.

[21] Appl. No.: **413,736**

[22] Filed: **Mar. 30, 1995**

[51] Int. Cl.⁶ **A61N 1/365**

[57] **ABSTRACT**

[52] U.S. Cl. **607/19**

A method of and apparatus for determining the physical posture of a patient's body, having a superior-inferior body axis, an anterior-posterior body axis and a lateral-medial body axis, in relation to earth's gravitational field. A medical device having first, second and, optionally, third DC accelerometers having sensitive axes mounted orthogonally within an implantable housing is adapted to be implanted with the sensitive axes generally aligned with the patient's body axes. Each DC accelerometer generates DC accelerometer signals having characteristic magnitudes and polarities on alignment of the sensitive axis with, against or normal to earth's gravitational field and DC accelerometer signals of varying magnitudes and polarities when not so aligned. Body position may be determined through comparison of the magnitudes and polarities of the DC accelerometer signals with the characteristic magnitudes and polarities. A patient activity signal may also be determined from the frequency of body movements recurring over a time unit effecting magnitude changes in the DC accelerometer signals within a certain range of magnitude and frequency. The activity and body position signals may be stored and/or used to monitor and effect the delivery of a therapy to the patient, e.g. by controlling the pacing rate of a rate responsive pacemaker.

[58] Field of Search 607/2, 19, 18, 607/17

[56] **References Cited**

U.S. PATENT DOCUMENTS

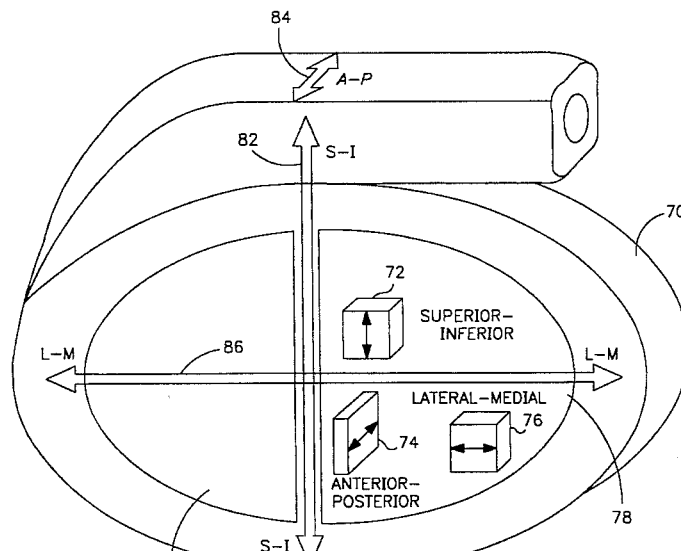
4,257,423	3/1981	McDonald .
4,374,382	2/1983	Markowitz .
4,428,378	1/1984	Anderson .
4,556,063	12/1985	Thompson .
4,869,251	9/1989	Lekholm .
5,010,893	4/1991	Sholder .
5,031,618	7/1991	Mullett .
5,127,404	7/1992	Wyborny .
5,226,413	7/1993	Bennett .
5,233,984	8/1993	Thompson .
5,318,596	6/1994	Barreras .
5,330,510	7/1994	Legay .
5,342,404	8/1994	Alt .
5,354,317	10/1994	Alt .

OTHER PUBLICATIONS

Bacharach et al., “Activity-Based Pacing: Comparison of a Device Using an Accelerometer Versus a Piezoelectric Crystal” *PACE*, vol. 15, pp. 188–196, Feb. 1992.

Alt et al., “A New Mechanical Sensor for Detecting Body Activity and Posture, Suitable for Rate Responsive Pacing”, *PACE*, vol. 11, pp. 1875–1881, Nov., 1988, Part II.

29 Claims, 15 Drawing Sheets



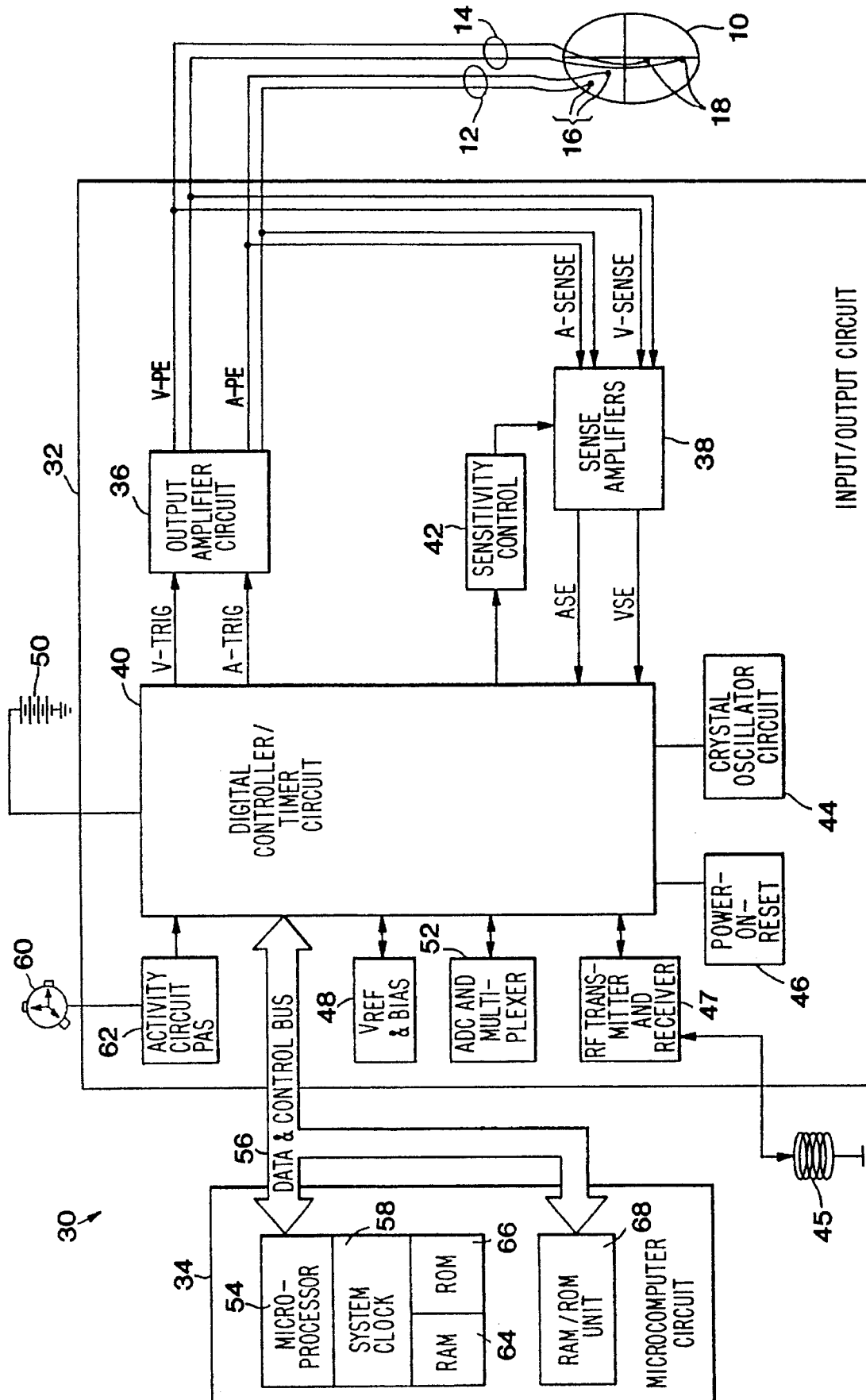
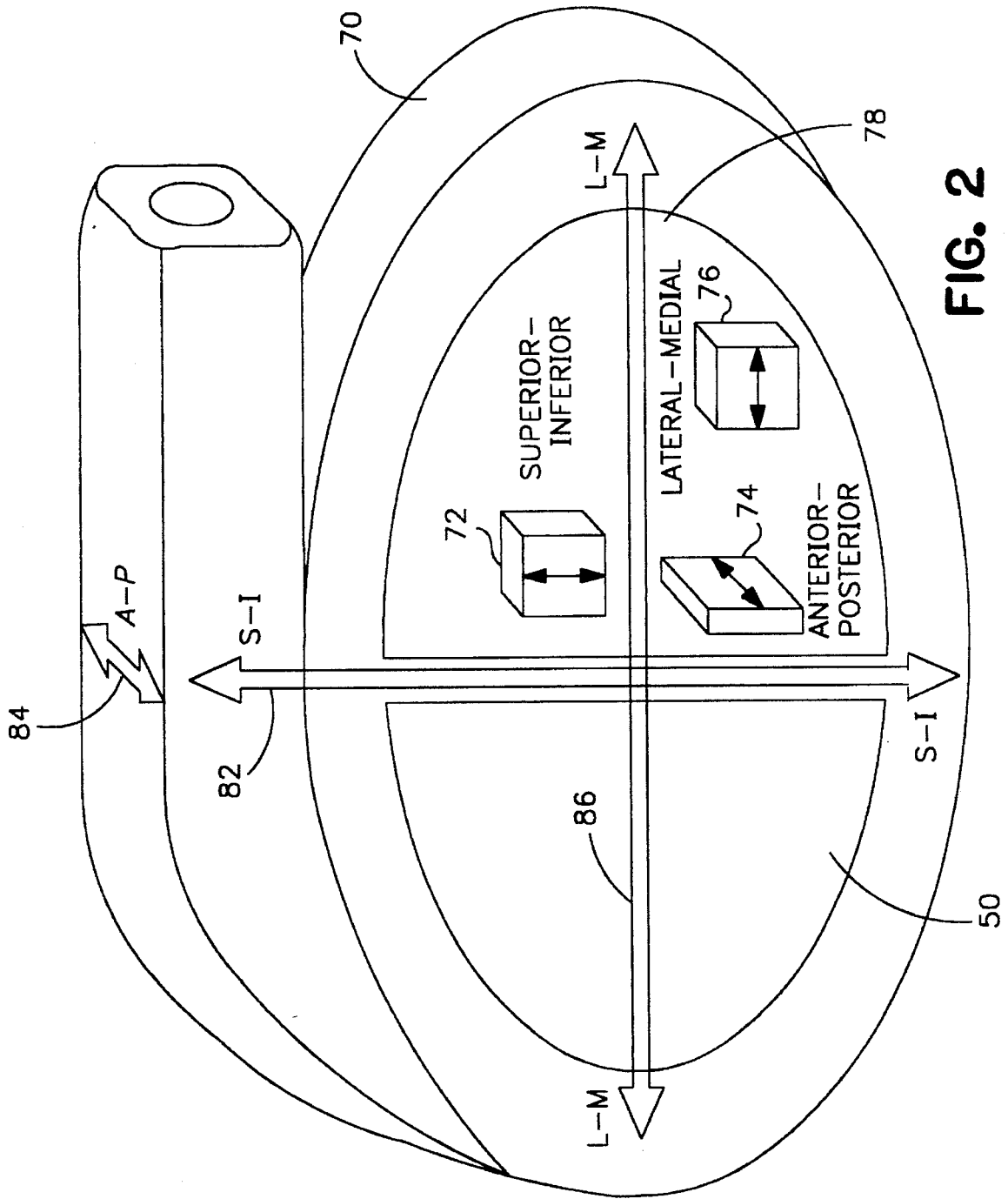


FIG. 1



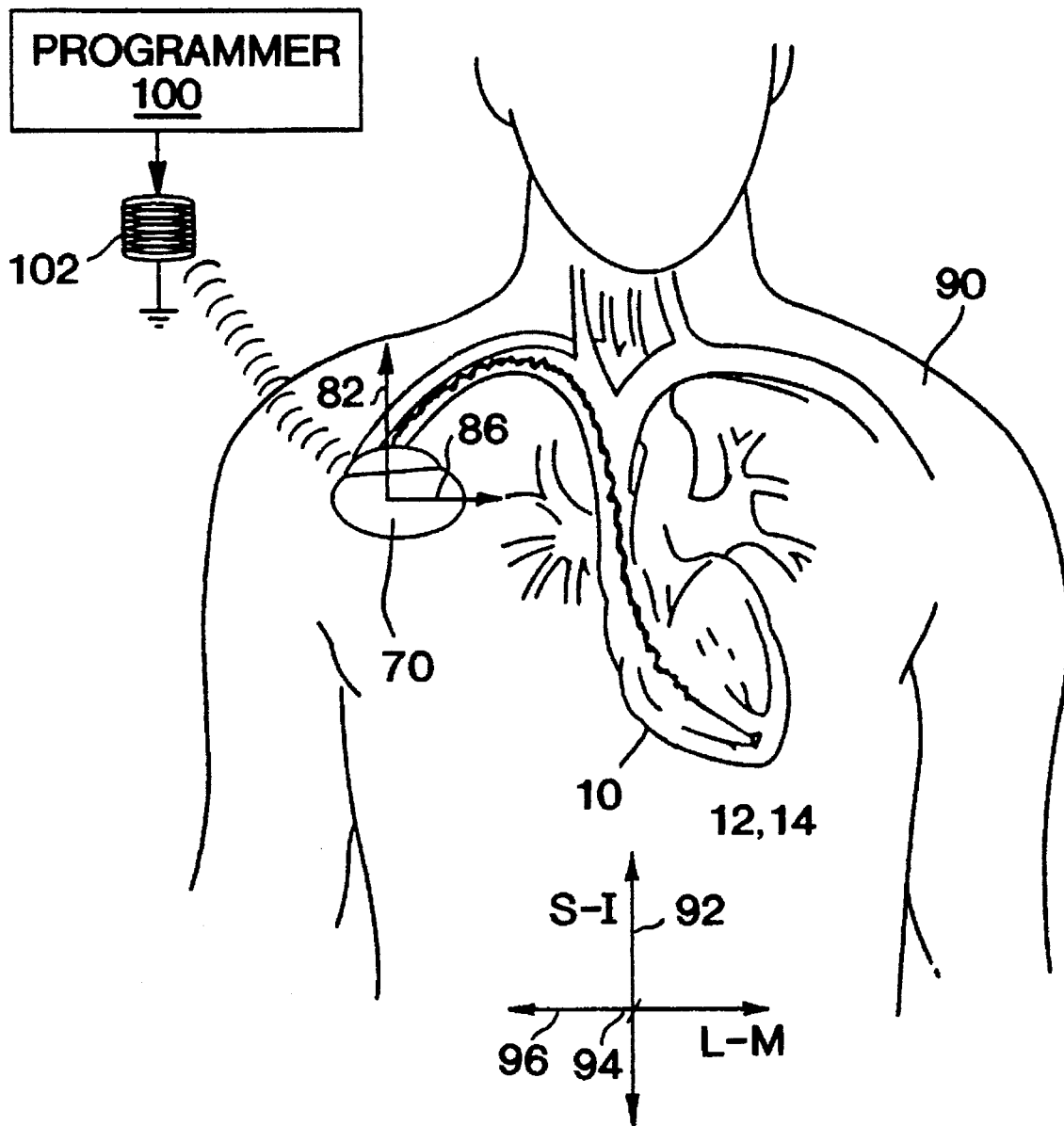


FIG. 3

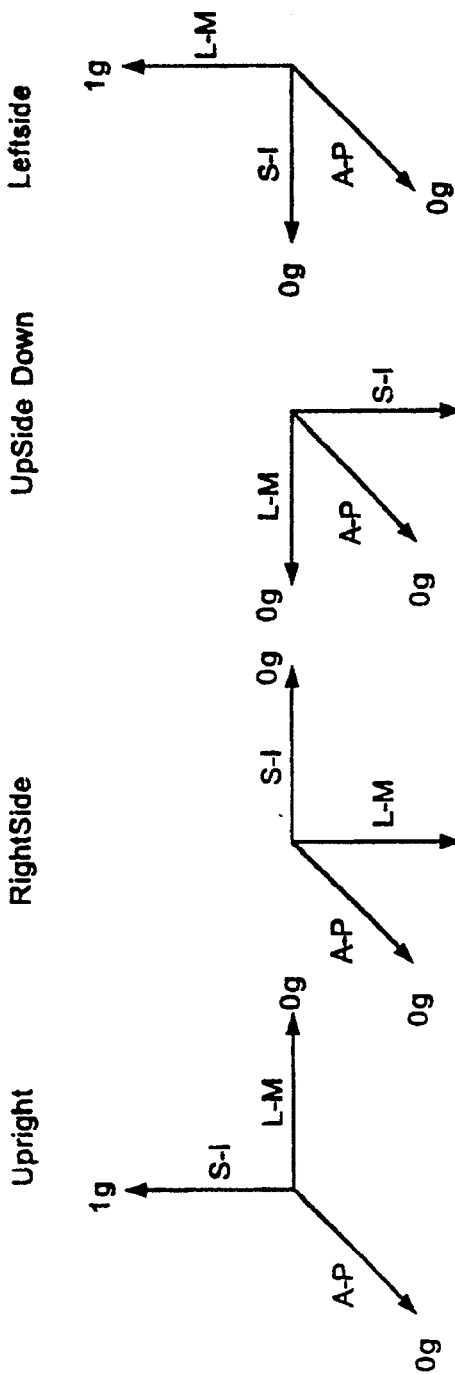


FIG. 4a

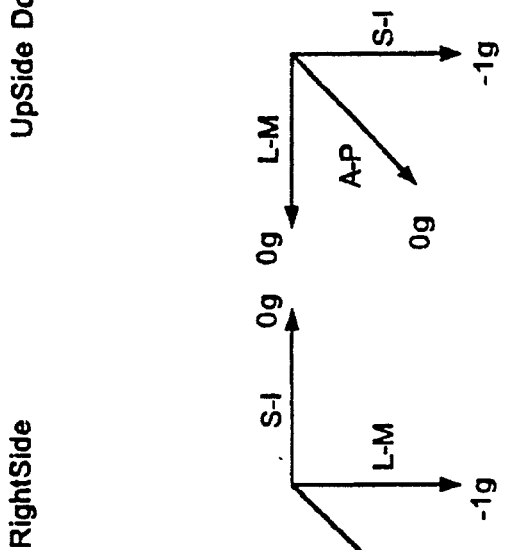


FIG. 4b



FIG. 4c

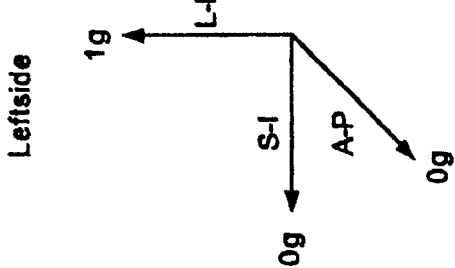


FIG. 4d

Supine

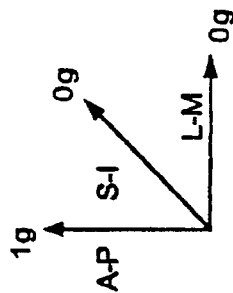


FIG. 4g

UpSide Down

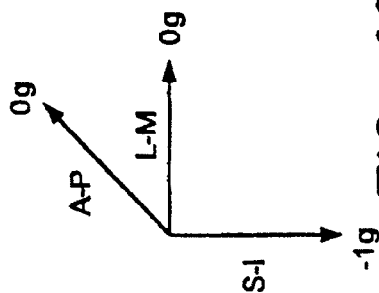


FIG. 4f

Prone

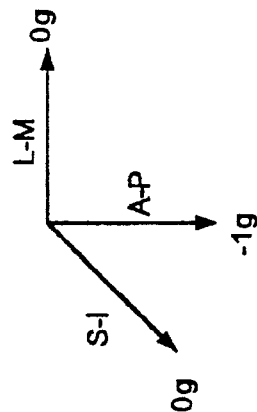


FIG. 4e

Explore Litigation Insights

Docket Alarm provides insights to develop a more informed litigation strategy and the peace of mind of knowing you're on top of things.

Real-Time Litigation Alerts



Keep your litigation team up-to-date with **real-time alerts** and advanced team management tools built for the enterprise, all while greatly reducing PACER spend.

Our comprehensive service means we can handle Federal, State, and Administrative courts across the country.

Advanced Docket Research



With over 230 million records, Docket Alarm's cloud-native docket research platform finds what other services can't. Coverage includes Federal, State, plus PTAB, TTAB, ITC and NLRB decisions, all in one place.

Identify arguments that have been successful in the past with full text, pinpoint searching. Link to case law cited within any court document via Fastcase.

Analytics At Your Fingertips



Learn what happened the last time a particular judge, opposing counsel or company faced cases similar to yours.

Advanced out-of-the-box PTAB and TTAB analytics are always at your fingertips.

API

Docket Alarm offers a powerful API (application programming interface) to developers that want to integrate case filings into their apps.

LAW FIRMS

Build custom dashboards for your attorneys and clients with live data direct from the court.

Automate many repetitive legal tasks like conflict checks, document management, and marketing.

FINANCIAL INSTITUTIONS

Litigation and bankruptcy checks for companies and debtors.

E-DISCOVERY AND LEGAL VENDORS

Sync your system to PACER to automate legal marketing.