





### <http://maps.google.com/mapfiles/kml/pushpin>



### <http://maps.google.com/mapfiles/kml/paddle>



### <http://maps.google.com/mapfiles/kml/pal2>



**<http://maps.google.com/mapfiles/kml/pal3>**



**<http://maps.google.com/mapfiles/kml/pal4>**



**<http://maps.google.com/mapfiles/kml/pal5>**



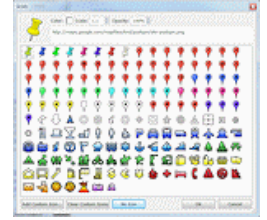
**<http://maps.google.com/mapfiles>**



## Notes:

The standard icons, which are shown in the icon chooser dialog (shown as thumbnail image on right) in Google Earth, are accessed locally (and **not fetched over network**). These standard icons include those in the *shapes*, *pushpin*, and *paddle* icon groups (e.g. <http://maps.google.com/mapfiles/kml/shapes/bus.png>).

These URLs are treated as [URIs](#) to the corresponding file stored locally which is especially important for closed/standalone environments where the domain *maps.google.com* cannot be accessed but the icons are still displayed. That is one of the benefits of choosing one of the standard Google icons as opposed to custom icons.



## See Also

<http://mapicons.nicolasmollet.com/> has a large collection of map icons.

---

[Google Earth](#) (TM) and [Google Maps](#) (TM) are registered trademarks of Google Inc. KML4Earth is not affiliated with Google. All image screenshots from Google Earth are Copyright Google.

Created and maintained by [jasonml](#)