

The Wayback Machine - <https://web.archive.org/web/20120527122157/http://kml4earth.appspot.com:80/icons.html>

KML4Earth Google Earth/Maps Public icons

• **Home**

• **Tools**

• **Icons**

• **Data**

• **Links**

• **Contact us**

The following is a collection of icons Google makes available for Google Earth and Google Maps. This is a useful cheat sheet showing all the standard icons to use in Google Earth.

You can insert the URLs below into Google Earth when editing the icon for a given placemark [see [instructions](#)] or use in the KML you create programmically.

Click any of the groups below to jump to that particular group of icons:

- <http://maps.google.com/mapfiles/kml/shapes>
- <http://maps.google.com/mapfiles/kml/pushpin>
- <http://maps.google.com/mapfiles/kml/paddle>
- <http://maps.google.com/mapfiles/kml/pal2>
- <http://maps.google.com/mapfiles/kml/pal3>
- <http://maps.google.com/mapfiles/kml/pal4>
- <http://maps.google.com/mapfiles/kml/pal5>
- <http://maps.google.com/mapfiles>
- [See notes](#)

Reference

- **KML Reference**
- **Tutorial**
- **GE User Guide**

© Copyright 2011 jasonm1

<http://maps.google.com/mapfiles/kml/shapes>





<http://maps.google.com/mapfiles/kml/pushpin>



<http://maps.google.com/mapfiles/kml/paddle>



<http://maps.google.com/mapfiles/kml/pal2>



http://maps.google.com/mapfiles/kml/pal3



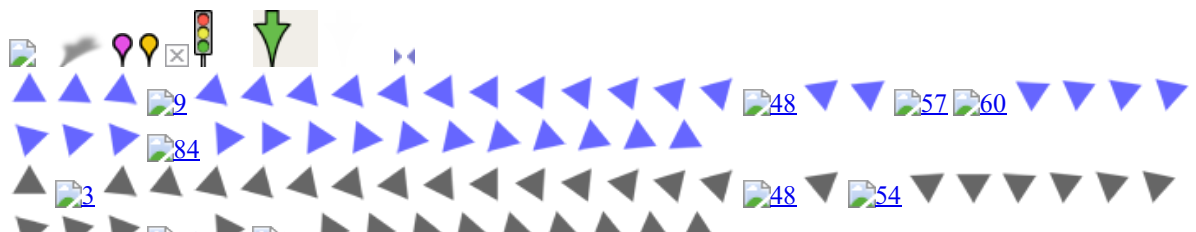
http://maps.google.com/mapfiles/kml/pal4



http://maps.google.com/mapfiles/kml/pal5



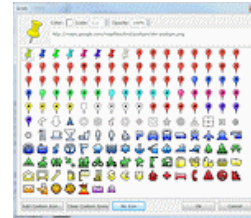
http://maps.google.com/mapfiles



Notes:

The standard icons, which are shown in the icon chooser dialog (shown as thumbnail image on right) in Google Earth, are accessed locally (and **not fetched over network**). These standard icons include those in the *shapes*, *pushpin*, and *paddle* icon groups (e.g. <http://maps.google.com/mapfiles/kml/shapes/bus.png>).

These URLs are treated as [URIs](#) to the corresponding file stored locally which is especially important for closed/standalone environments where the domain *maps.google.com* cannot be accessed but the icons are still displayed. That is one of the benefits of choosing one of the standard Google icons as opposed to custom icons.



See Also

<http://mapicons.nicolasmollet.com/> has a large collection of map icons.

[Google Earth](#) (TM) and [Google Maps](#) (TM) are registered trademarks of Google Inc. KML4Earth is not affiliated with Google. All image screenshots from Google Earth are Copyright Google.

Created and maintained by [jasonml](#)