



US 20100172180A1

(19) **United States**

(12) **Patent Application Publication**
Paley et al.

(10) **Pub. No.: US 2010/0172180 A1**

(43) **Pub. Date: Jul. 8, 2010**

(54) **NON-VOLATILE MEMORY AND METHOD WITH WRITE CACHE PARTITIONING**

(22) Filed: **Jan. 5, 2009**

Publication Classification

(76) Inventors: **Alexander Paley**, Kfar-Saba (IL); **Sergey Anatolievich Gorobets**, Edinburgh (GB); **Eugene Zilberman**, Richmond Hill (CA); **Alan David Bennett**, Edinburgh (GB); **Shai Traister**, San Jose, CA (US); **Andrew Tomlin**, San Jose, CA (US); **William S. Wu**, Cupertino, CA (US); **Bum Suck So**, San Jose, CA (US)

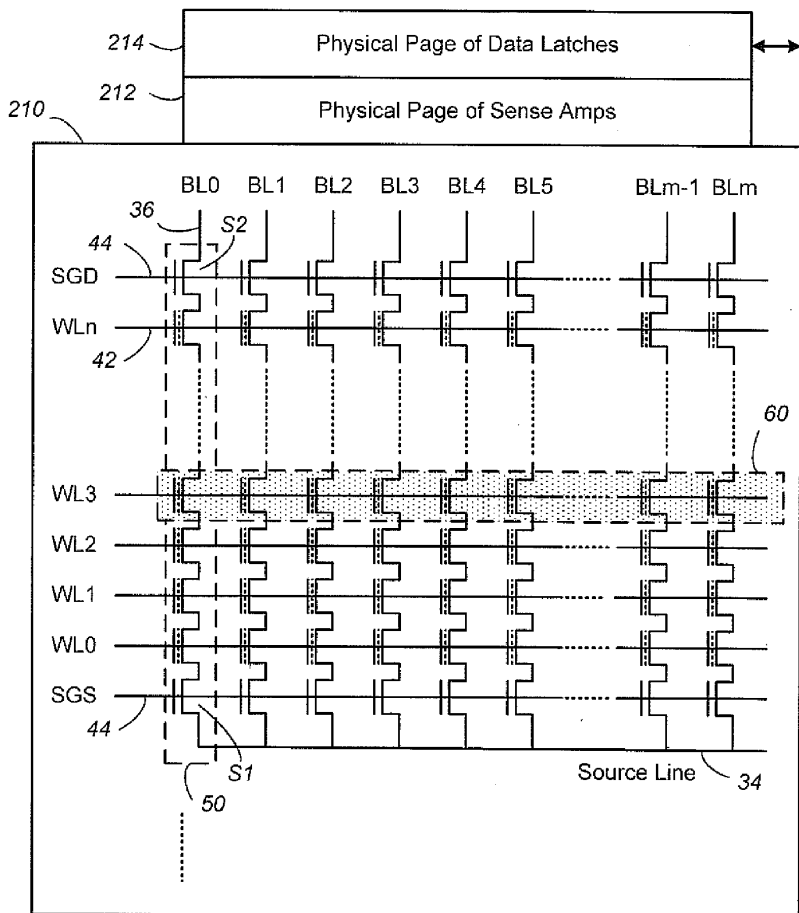
(51) **Int. Cl.**
G11C 16/04 (2006.01)
G11C 16/06 (2006.01)
(52) **U.S. Cl.** **365/185.12; 365/185.11; 365/185.18**

(57) **ABSTRACT**

A portion of a nonvolatile memory is partitioned from a main multi-level memory array to operate as a cache. The cache memory is configured to store at less capacity per memory cell and finer granularity of write units compared to the main memory. In a block-oriented memory architecture, the cache has multiple functions, not merely to improve access speed, but is an integral part of a sequential update block system. Decisions to write data to the cache memory or directly to the main memory depend on the attributes and characteristics of the data to be written, the state of the blocks in the main memory portion and the state of the blocks in the cache portion.

Correspondence Address:
DAVIS WRIGHT TREMAINE LLP - SANDISK CORPORATION
505 MONTGOMERY STREET, SUITE 800
SAN FRANCISCO, CA 94111 (US)

(21) Appl. No.: **12/348,891**



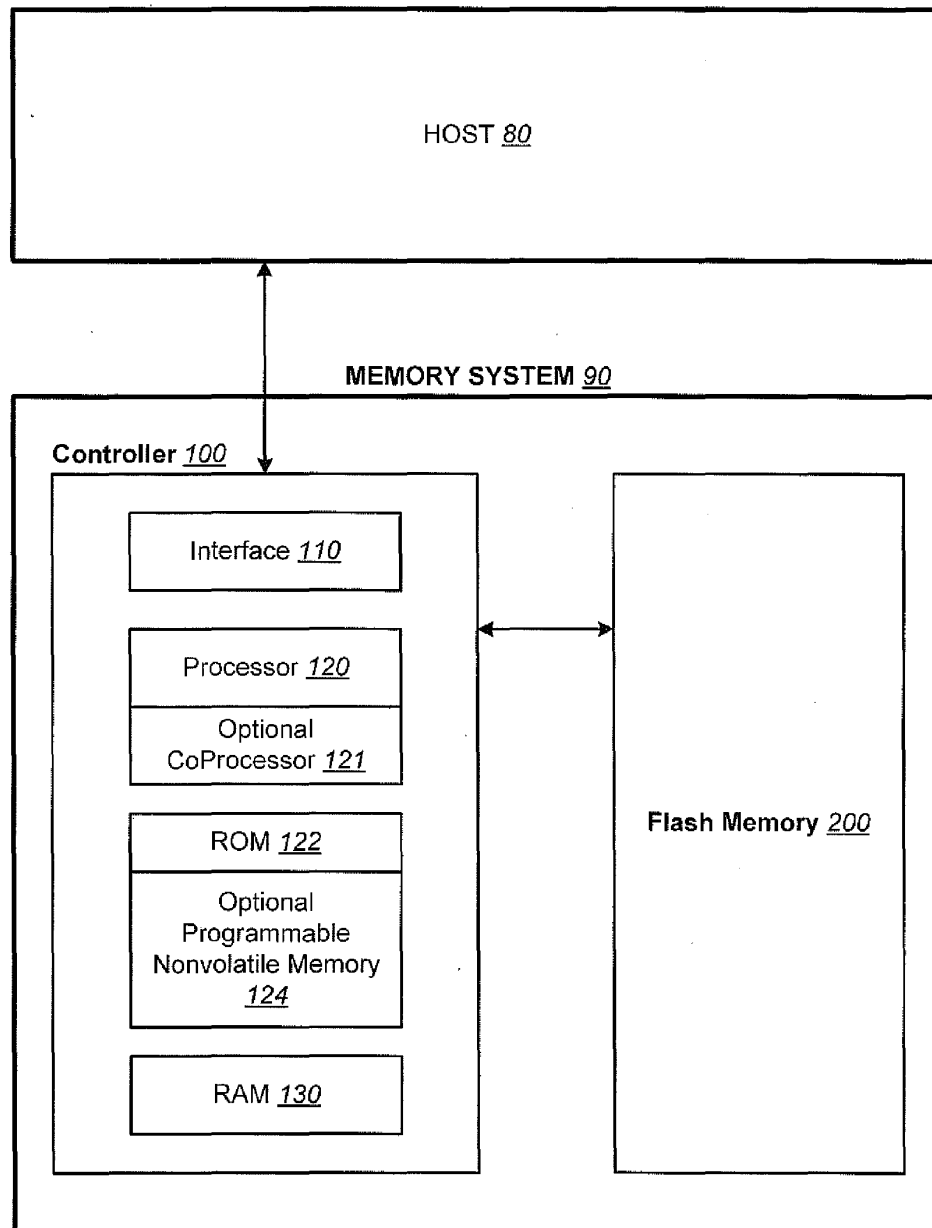


FIG. 1

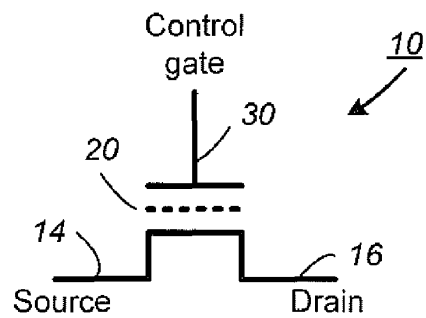


FIG. 2

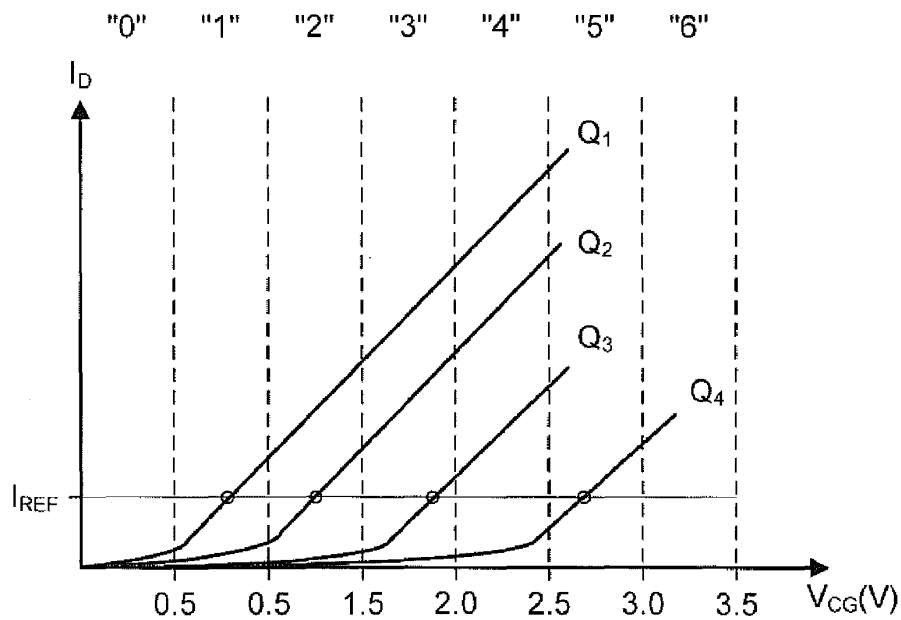


FIG. 3

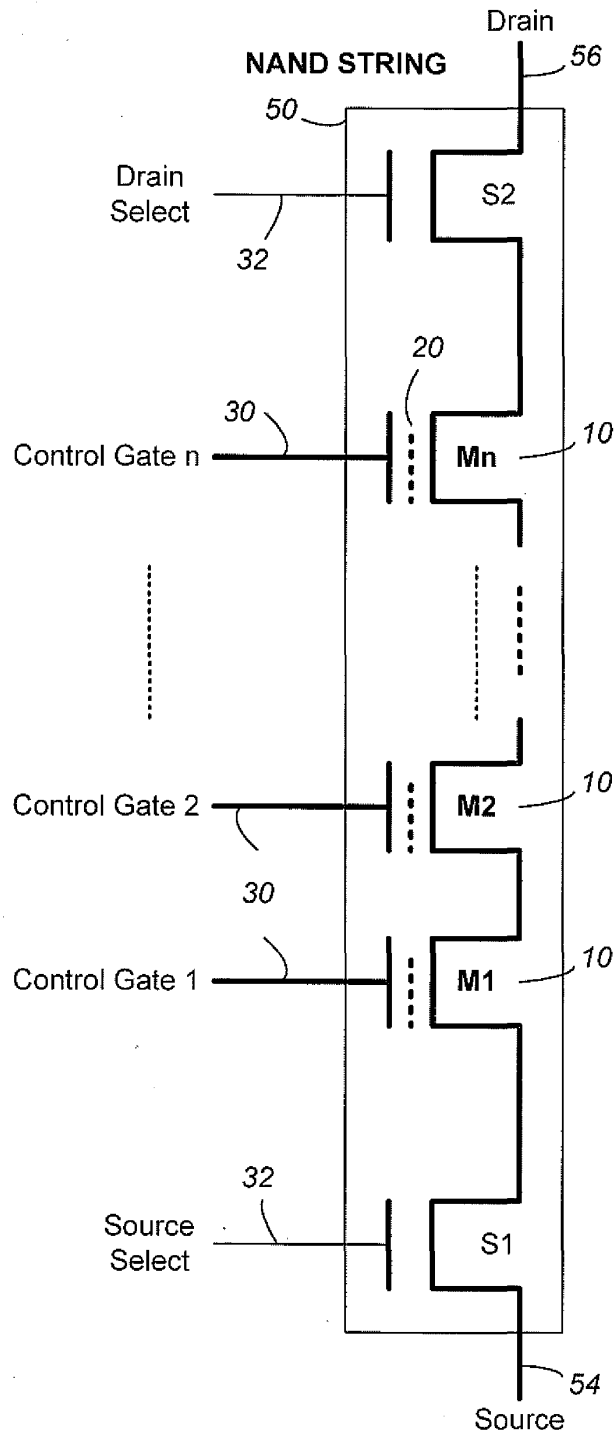


FIG. 4A

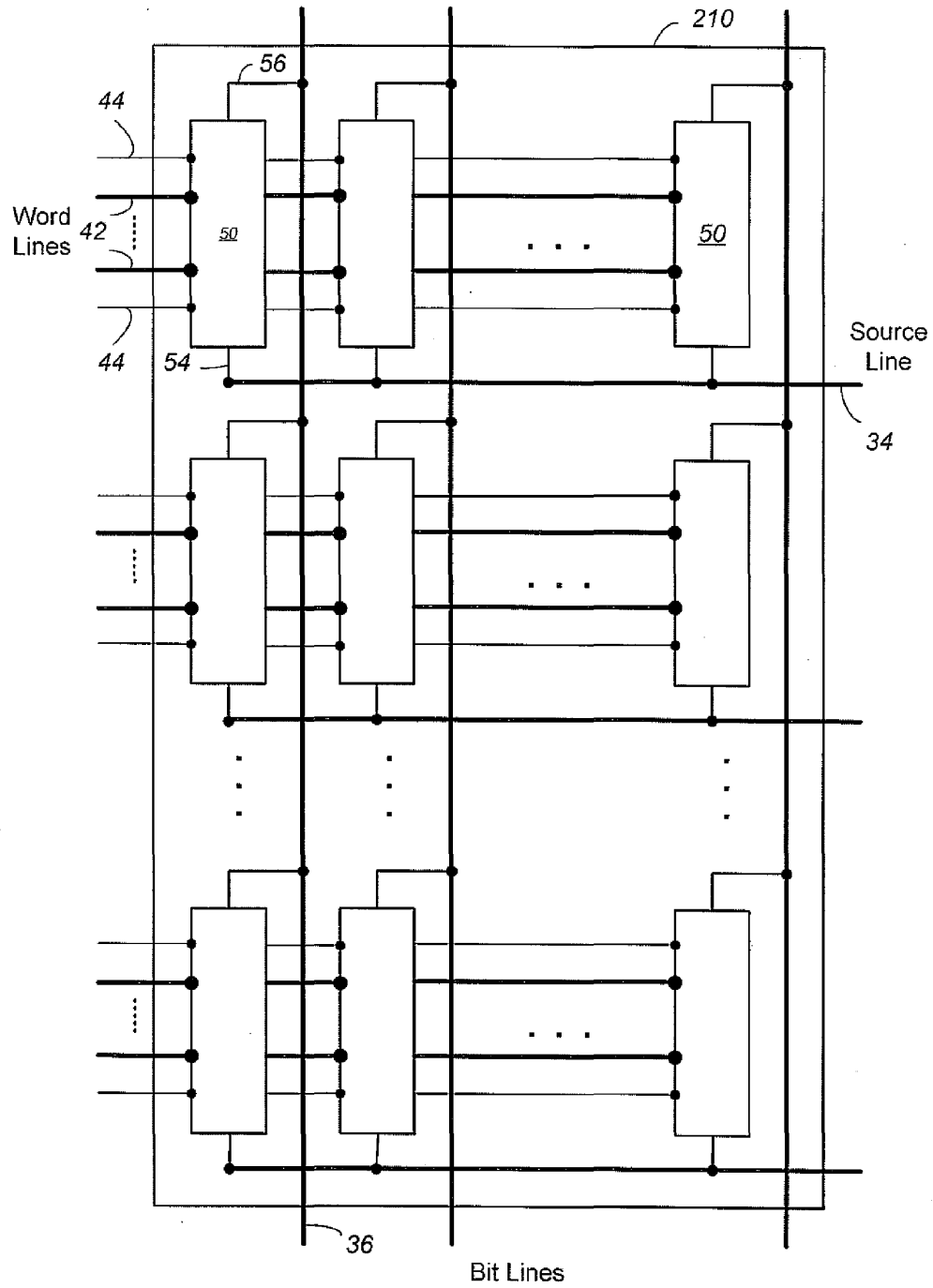


FIG. 4B

Explore Litigation Insights

Docket Alarm provides insights to develop a more informed litigation strategy and the peace of mind of knowing you're on top of things.

Real-Time Litigation Alerts



Keep your litigation team up-to-date with **real-time alerts** and advanced team management tools built for the enterprise, all while greatly reducing PACER spend.

Our comprehensive service means we can handle Federal, State, and Administrative courts across the country.

Advanced Docket Research



With over 230 million records, Docket Alarm's cloud-native docket research platform finds what other services can't. Coverage includes Federal, State, plus PTAB, TTAB, ITC and NLRB decisions, all in one place.

Identify arguments that have been successful in the past with full text, pinpoint searching. Link to case law cited within any court document via Fastcase.

Analytics At Your Fingertips



Learn what happened the last time a particular judge, opposing counsel or company faced cases similar to yours.

Advanced out-of-the-box PTAB and TTAB analytics are always at your fingertips.

API

Docket Alarm offers a powerful API (application programming interface) to developers that want to integrate case filings into their apps.

LAW FIRMS

Build custom dashboards for your attorneys and clients with live data direct from the court.

Automate many repetitive legal tasks like conflict checks, document management, and marketing.

FINANCIAL INSTITUTIONS

Litigation and bankruptcy checks for companies and debtors.

E-DISCOVERY AND LEGAL VENDORS

Sync your system to PACER to automate legal marketing.