



US 20020124502A1

(19) **United States**

(12) **Patent Application Publication**
Henderson

(10) **Pub. No.: US 2002/0124502 A1**
(43) **Pub. Date: Sep. 12, 2002**

(54) **PERIMETER WEIGHTED FOUNDATION FOR WIND TURBINES AND THE LIKE**

(76) Inventor: **Allan P. Henderson, Bakersfield, CA (US)**

Correspondence Address:
JACOBSON HOLMAN PLLC
400 SEVENTH STREET N.W.
SUITE 600
WASHINGTON, DC 20004 (US)

(21) Appl. No.: **10/067,999**

(22) Filed: **Feb. 8, 2002**

Related U.S. Application Data

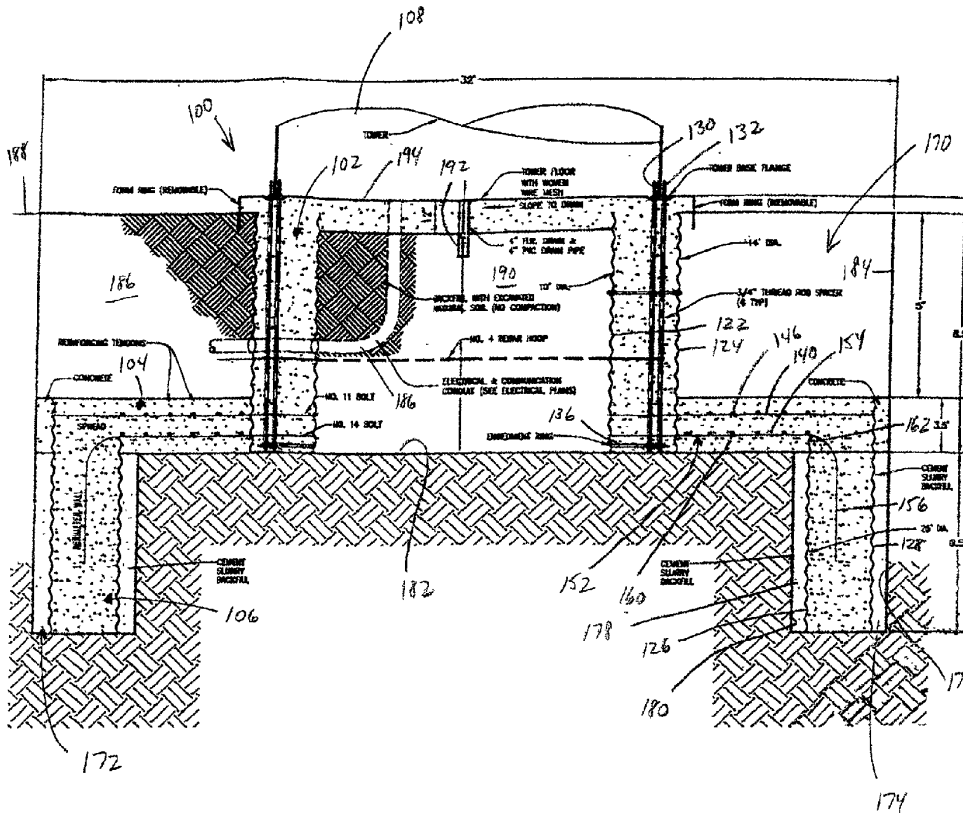
(63) Continuation of application No. 09/671,282, filed on Sep. 27, 2000, now abandoned.

Publication Classification

(51) **Int. Cl.⁷ E02D 27/00; E02D 27/32**
(52) **U.S. Cl. 52/296; 52/741.14; 52/741.15**

(57) **ABSTRACT**

A perimeter weighted foundation has a central pier pedestal and an enlarged base spaced outwardly and extending below the pedestal. The enlarged base includes an outer concentric perimeter wall section with a radially extending, disk-shaped spread section interconnecting the bottom of the pedestal section and the top of the perimeter wall section. The pedestal section includes vertically extending post-tensioning anchor bolts sleeved through substantially the entire height of the cylindrical pedestal in accordance with earlier U.S. Pat. Nos. 5,586,417 and 5,826,387 and the spread section includes two layers of similarly sleeved post-tensioning bolts which extend through the bottom of the pedestal section and into or through the top of the perimeter wall section, thus tying together the enlarged base to the pier pedestal. After the concrete is poured, hardened and cured, the vertical bolts of the pedestal section and the radially extending horizontal bolts in the spread section are post-tensioned to impart a heavy unit compressive loading on the concrete in the pier pedestal and enlarged base. After back filling soil onto the spread section and to the interior of the pedestal section, the foundation is able to withstand high upset forces imparted to the foundation by any large structure supported thereon.



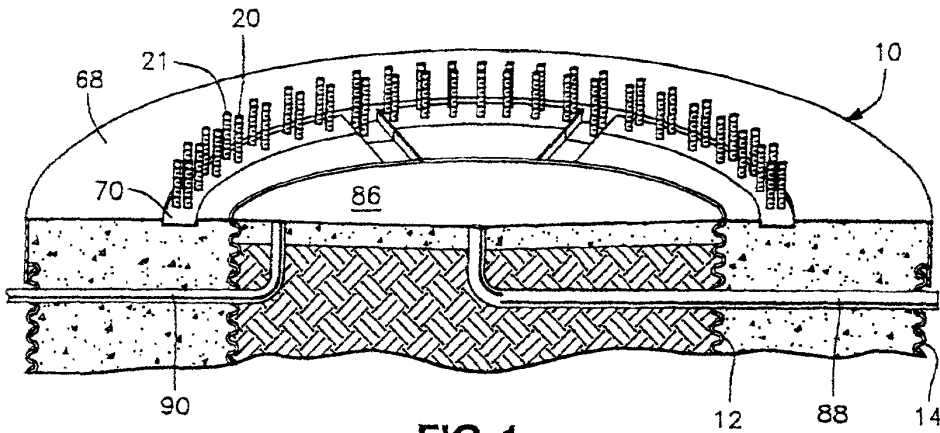


FIG. 1
(PRIOR ART)

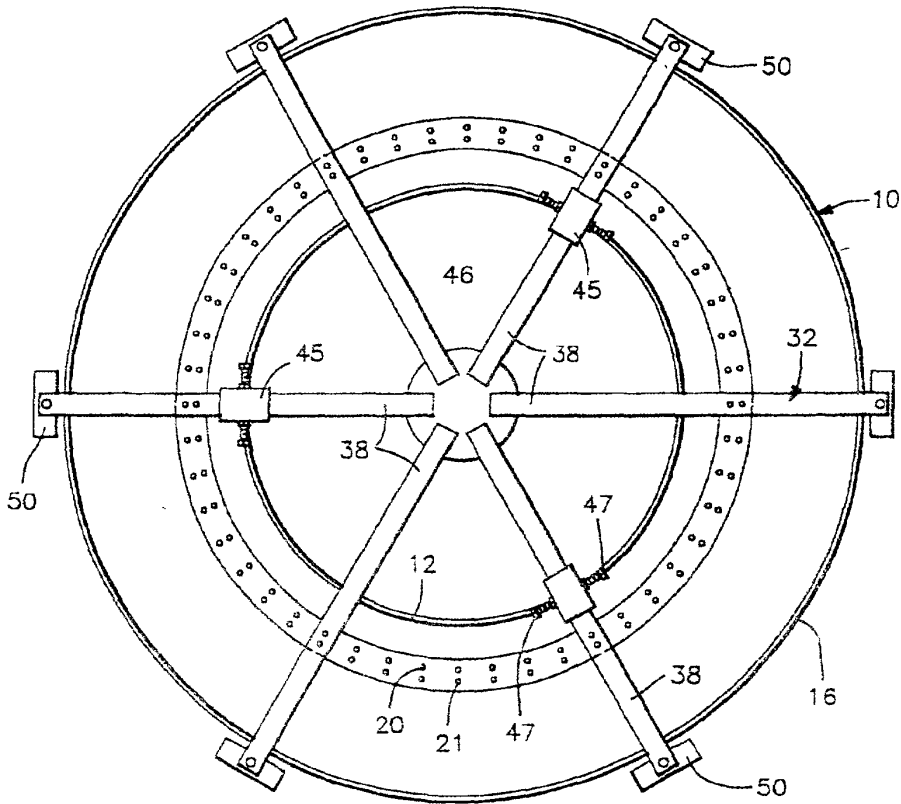


FIG. 2A
(PRIOR ART)

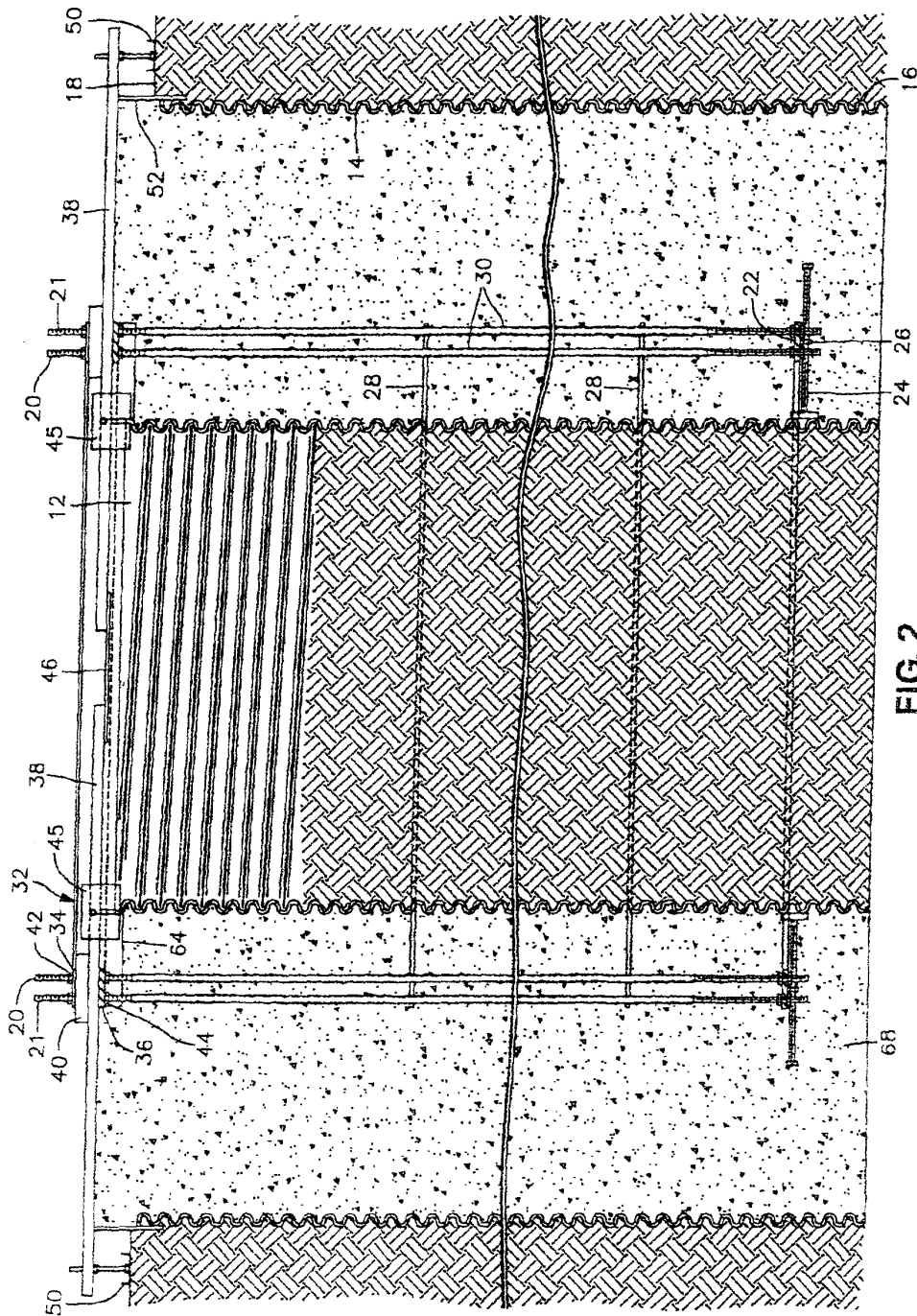


FIG. 2
(PRIOR ART)

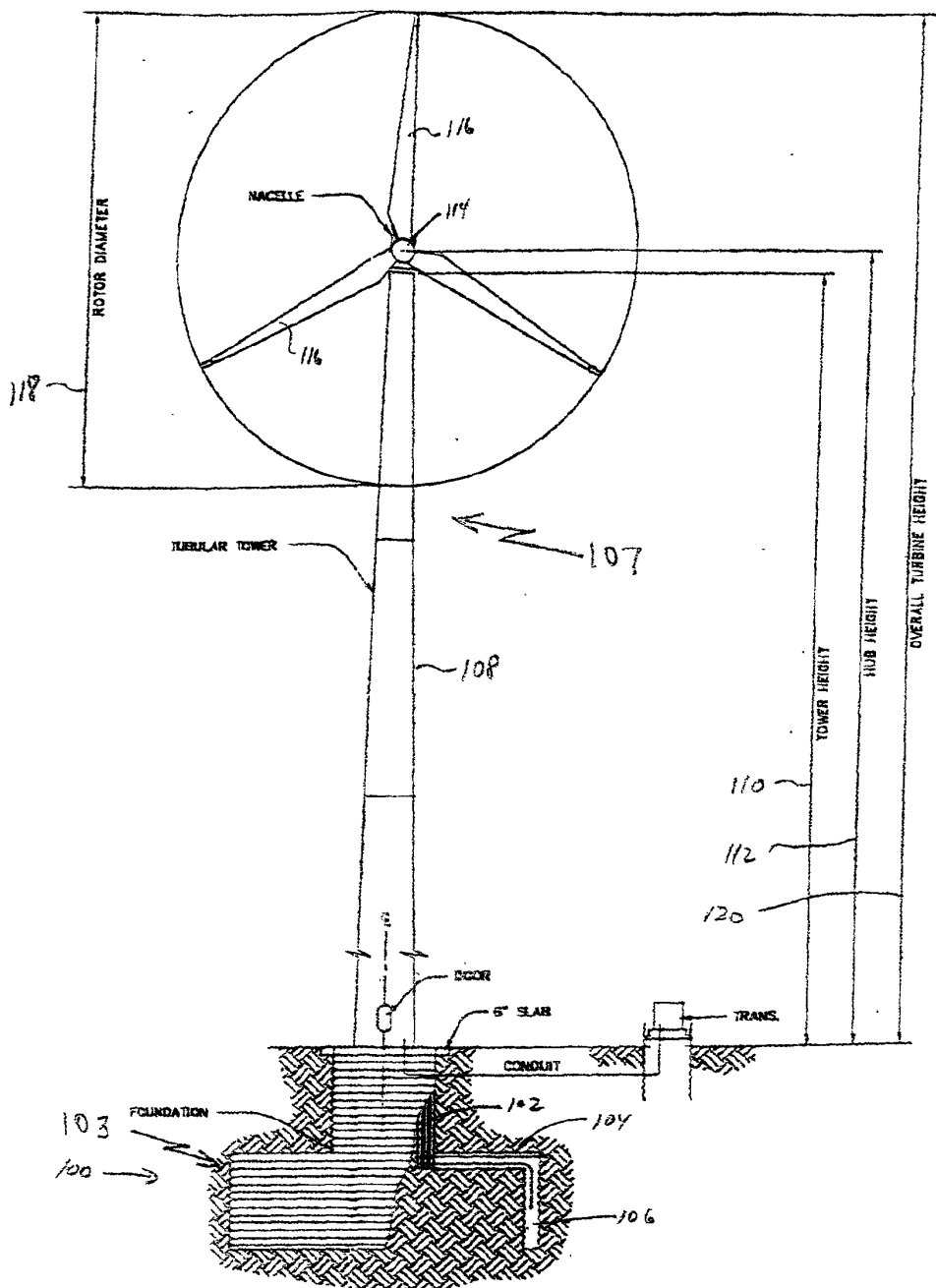


FIG. 3

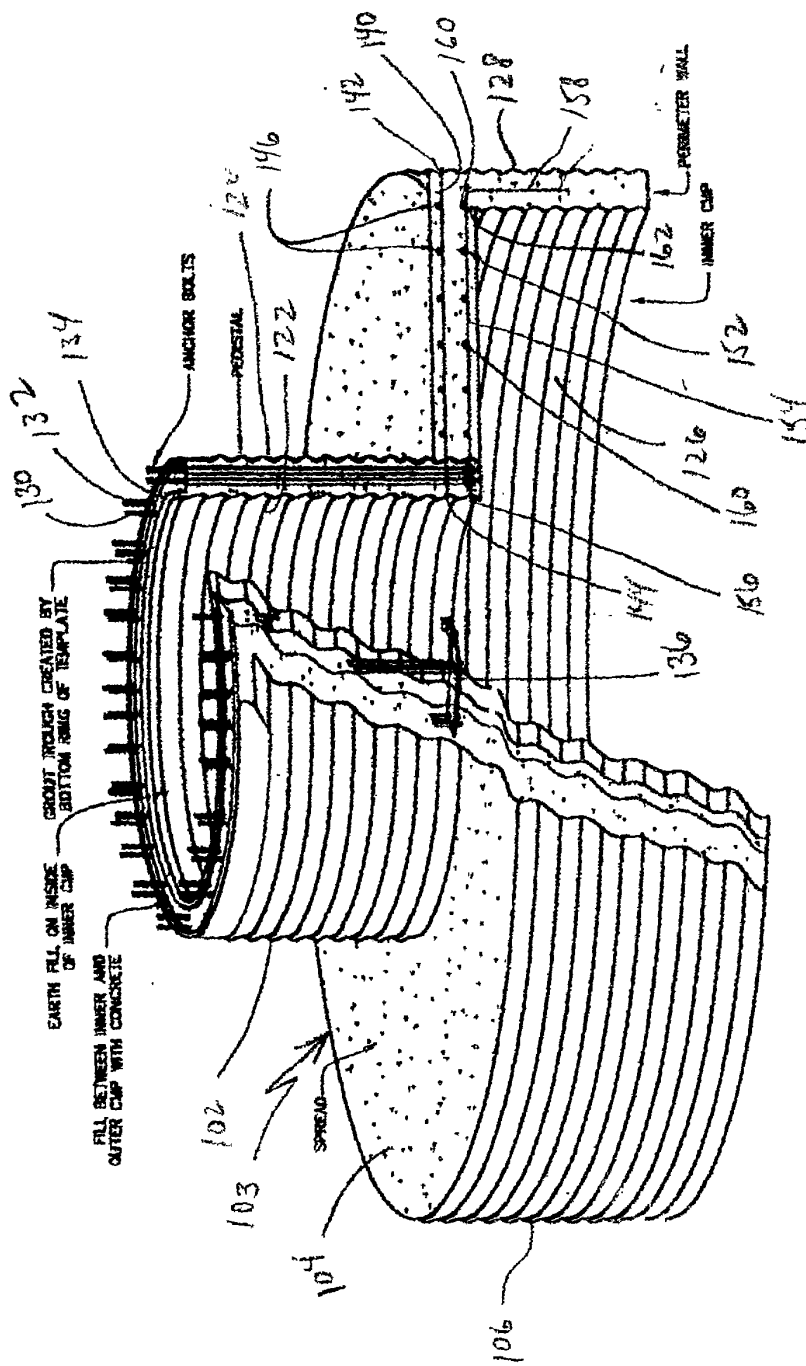


FIG. 4

Explore Litigation Insights

Docket Alarm provides insights to develop a more informed litigation strategy and the peace of mind of knowing you're on top of things.

Real-Time Litigation Alerts



Keep your litigation team up-to-date with **real-time alerts** and advanced team management tools built for the enterprise, all while greatly reducing PACER spend.

Our comprehensive service means we can handle Federal, State, and Administrative courts across the country.

Advanced Docket Research



With over 230 million records, Docket Alarm's cloud-native docket research platform finds what other services can't. Coverage includes Federal, State, plus PTAB, TTAB, ITC and NLRB decisions, all in one place.

Identify arguments that have been successful in the past with full text, pinpoint searching. Link to case law cited within any court document via Fastcase.

Analytics At Your Fingertips



Learn what happened the last time a particular judge, opposing counsel or company faced cases similar to yours.

Advanced out-of-the-box PTAB and TTAB analytics are always at your fingertips.

API

Docket Alarm offers a powerful API (application programming interface) to developers that want to integrate case filings into their apps.

LAW FIRMS

Build custom dashboards for your attorneys and clients with live data direct from the court.

Automate many repetitive legal tasks like conflict checks, document management, and marketing.

FINANCIAL INSTITUTIONS

Litigation and bankruptcy checks for companies and debtors.

E-DISCOVERY AND LEGAL VENDORS

Sync your system to PACER to automate legal marketing.