



US005731731A

United States Patent [19]
Wilcox et al.

[11] **Patent Number:** **5,731,731**
[45] **Date of Patent:** **Mar. 24, 1998**

[54] **HIGH EFFICIENCY SWITCHING
REGULATOR WITH ADAPTIVE DRIVE
OUTPUT CIRCUIT**

7-222438 8/1995 Japan .

OTHER PUBLICATIONS

[75] Inventors: **Milton E. Wilcox**, Saratoga; **Robert C. Dobkin**, Monte Sereno; **Carl T. Nelson**, San Jose, all of Calif.

"Maxim Max717–Max721 Palmtop Computer and Flash Memory Power–Supply Regulators," Maxim Integrated Products, Inc., Data Sheet Rev. O, Sunnyvale, California, pp. 4–67 to 4–77, published Oct. 1992.

[73] Assignee: **Linear Technology Corporation**, Milpitas, Calif.

"Battery Management and DC–DC Converter Circuit Collection: Power–Supply Applications Guide for Portable Equipment," Maxim Integrated Products, Inc., pp. 7–9 and 11, published 1994.

[21] Appl. No.: **786,500**

[22] Filed: **Jan. 21, 1997**

Related U.S. Application Data

[63] Continuation of Ser. No. 454,595, May 30, 1995, abandoned.

Primary Examiner—Terry Cunningham
Attorney, Agent, or Firm—Fish & Neave; Robert W. Morris; Douglas A. Cardwell

[51] **Int. Cl.**⁶ **H03K 17/693**
[52] **U.S. Cl.** **327/403; 327/170; 327/389; 327/404; 327/541; 327/543**

[57] **ABSTRACT**

[58] **Field of Search** 327/170, 380, 327/381, 389, 391, 403, 404, 405, 538, 540, 541, 543; 326/87; 323/313, 315, 316

Switching regulator circuits and methods are provided in which the output circuit is adaptable to maintain high efficiency over various load current levels. The regulator circuits generate one or more control signals in response to the load current and selectively route a switch driver control signal to one or more switches in the output circuit. The switches differ in their size, such that the most efficient switch can be used at a particular load current level. At low load current levels, the driver control signal is routed to output circuitry with smaller switch devices, which incur smaller driver current losses for a given frequency of operation, thereby increasing the regulator efficiency. At high load current levels, the driver control signal is routed to large switch devices, which incur greater driver current losses for a given frequency of operation, but which have a lower impedance. The regulator thus maintains high efficiency over a wide range of load currents while operating at a constant frequency.

[56] **References Cited**

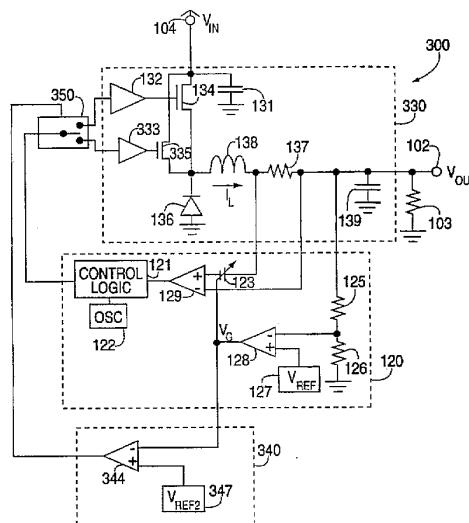
U.S. PATENT DOCUMENTS

4,604,731	8/1986	Konishi	326/87
4,611,135	9/1986	Nakayama et al.	327/404
4,616,142	10/1986	Upadhyay et al.	327/405
5,099,192	3/1992	Thayer et al.	323/315
5,194,765	3/1993	Dunlop et al.	326/87
5,254,883	10/1993	Horowitz et al.	327/541
5,457,407	10/1995	Shu et al.	326/87
5,475,332	12/1995	Ishimoto	327/404
5,483,188	1/1996	Frodsham	327/380

FOREIGN PATENT DOCUMENTS

5-206829	8/1993	Japan	326/87
----------	--------	-------	-------	--------

22 Claims, 5 Drawing Sheets



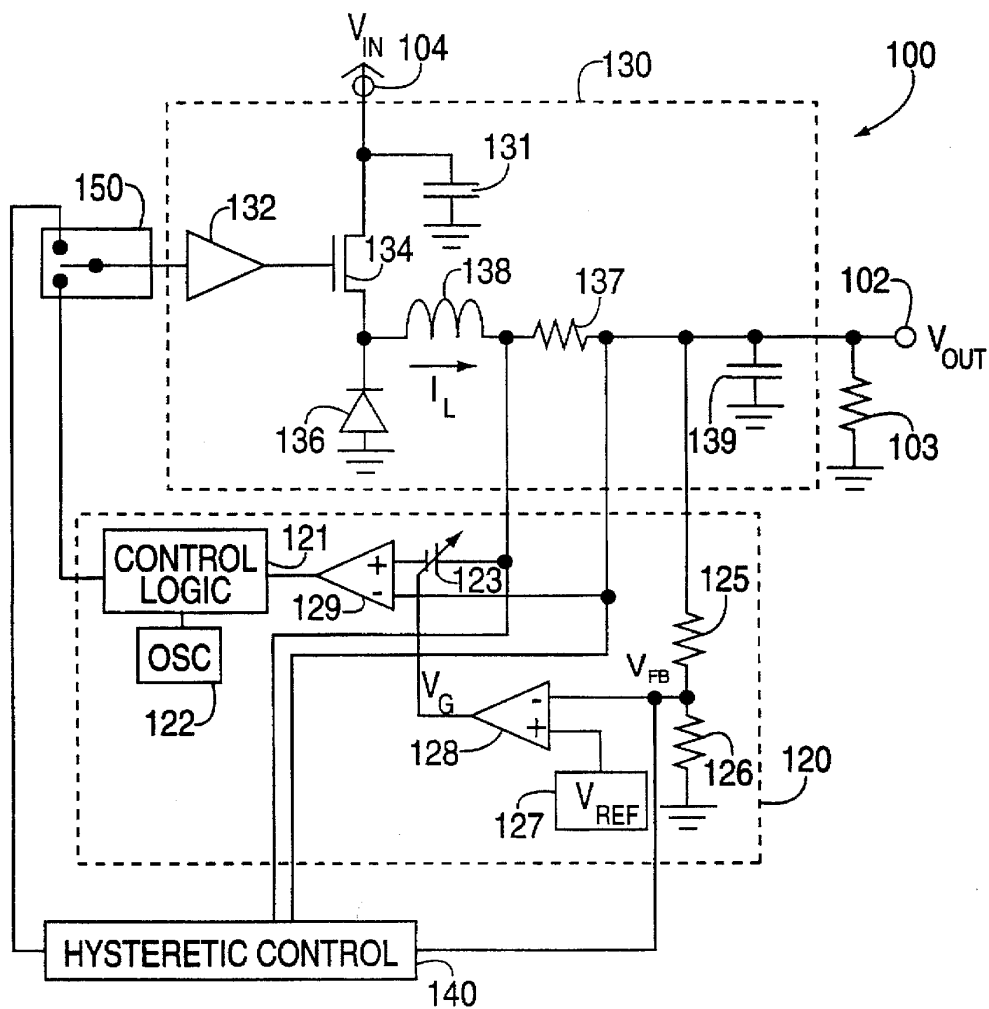


FIG. 1
PRIOR ART

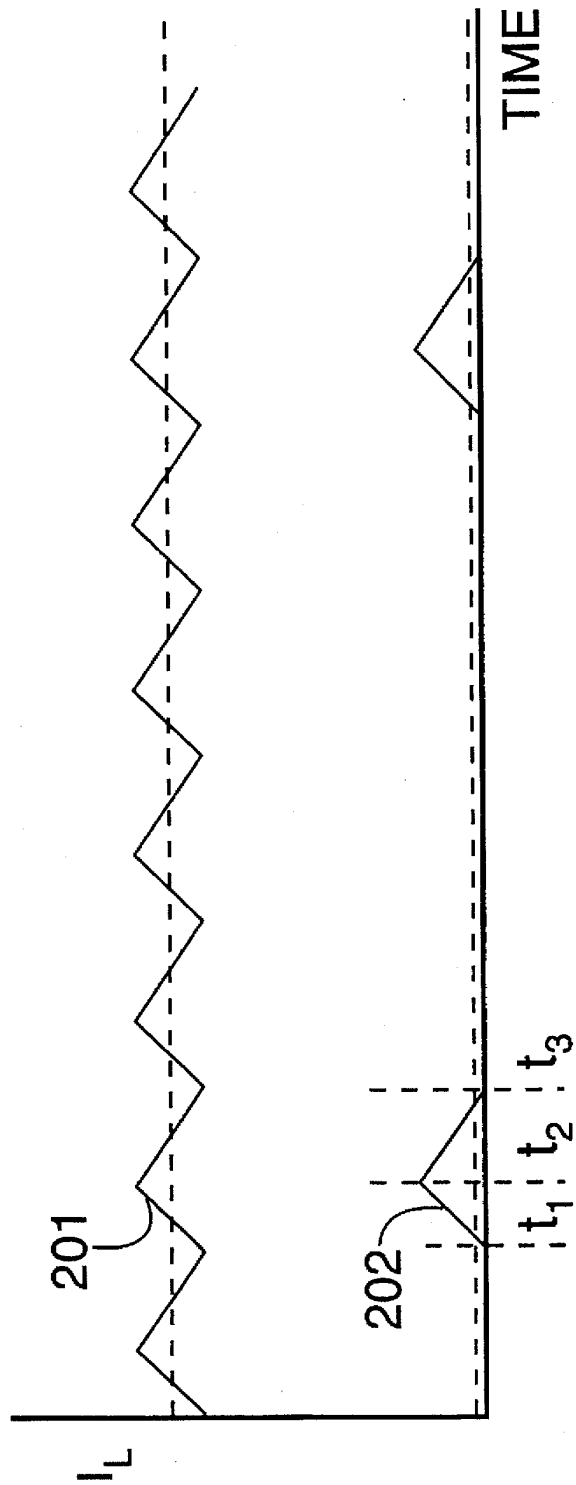


FIG. 2

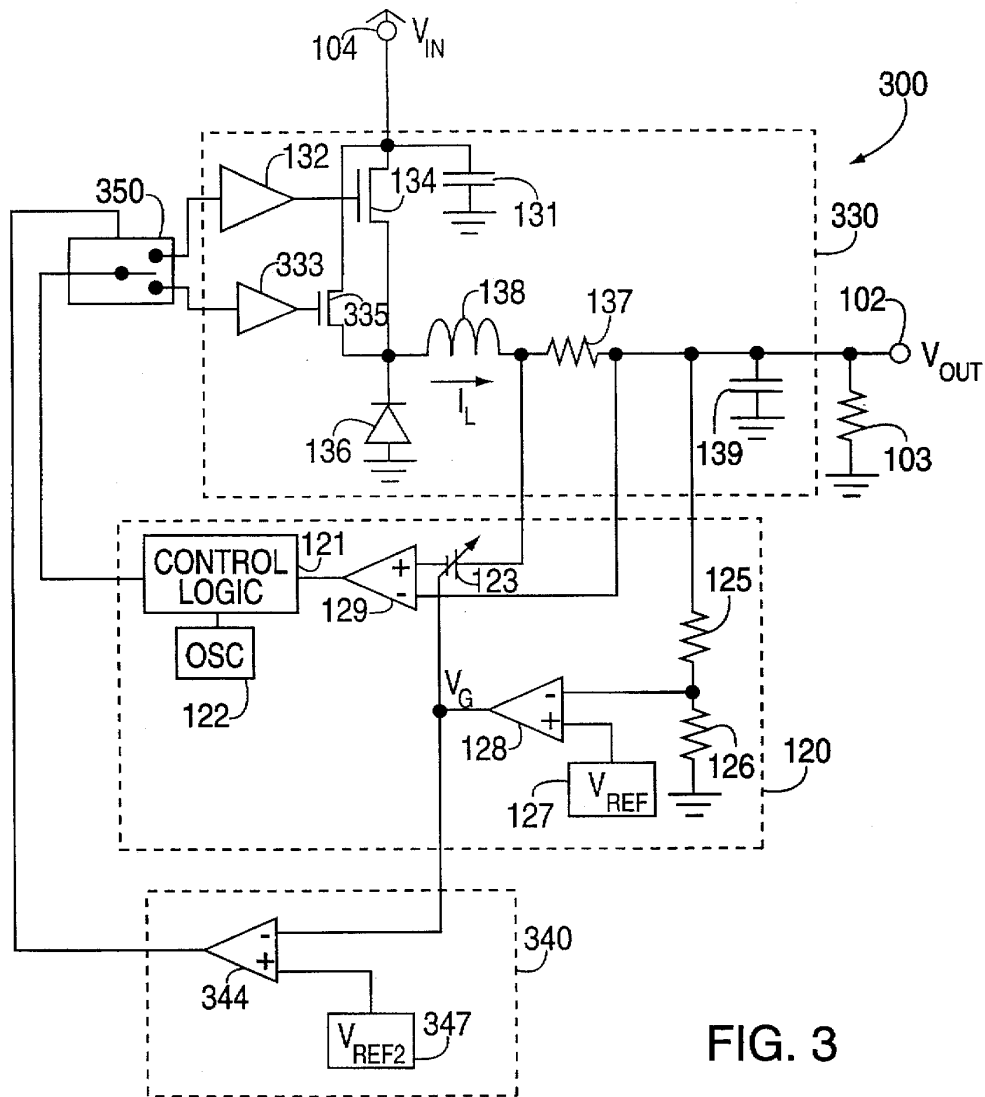


FIG. 3

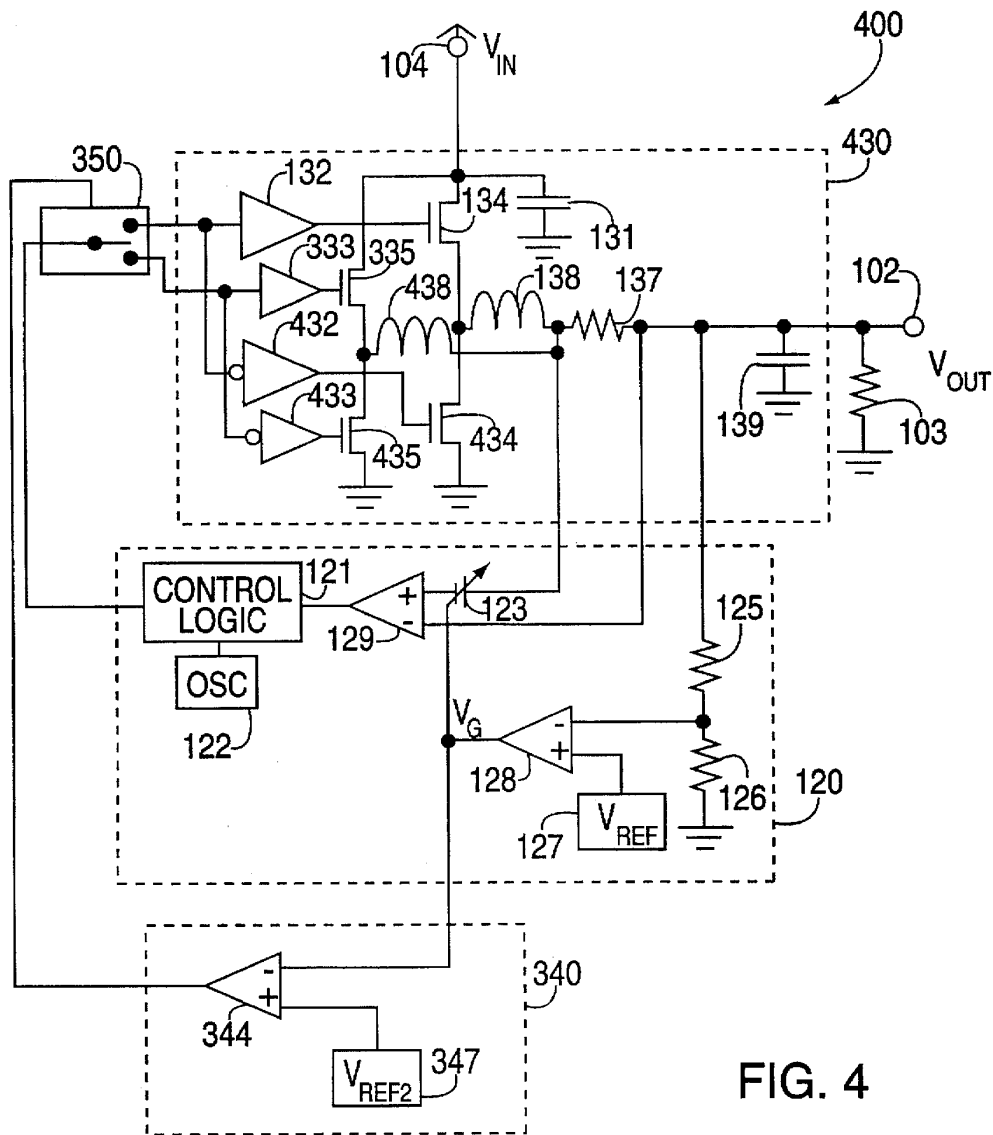


FIG. 4

Explore Litigation Insights

Docket Alarm provides insights to develop a more informed litigation strategy and the peace of mind of knowing you're on top of things.

Real-Time Litigation Alerts



Keep your litigation team up-to-date with **real-time alerts** and advanced team management tools built for the enterprise, all while greatly reducing PACER spend.

Our comprehensive service means we can handle Federal, State, and Administrative courts across the country.

Advanced Docket Research



With over 230 million records, Docket Alarm's cloud-native docket research platform finds what other services can't. Coverage includes Federal, State, plus PTAB, TTAB, ITC and NLRB decisions, all in one place.

Identify arguments that have been successful in the past with full text, pinpoint searching. Link to case law cited within any court document via Fastcase.

Analytics At Your Fingertips



Learn what happened the last time a particular judge, opposing counsel or company faced cases similar to yours.

Advanced out-of-the-box PTAB and TTAB analytics are always at your fingertips.

API

Docket Alarm offers a powerful API (application programming interface) to developers that want to integrate case filings into their apps.

LAW FIRMS

Build custom dashboards for your attorneys and clients with live data direct from the court.

Automate many repetitive legal tasks like conflict checks, document management, and marketing.

FINANCIAL INSTITUTIONS

Litigation and bankruptcy checks for companies and debtors.

E-DISCOVERY AND LEGAL VENDORS

Sync your system to PACER to automate legal marketing.