



US 20100172551A1

(19) **United States**

(12) **Patent Application Publication**  
**Gilley et al.**

(10) **Pub. No.: US 2010/0172551 A1**  
(43) **Pub. Date: Jul. 8, 2010**

(54) **ORGANIZING IMAGES BY CORRELATING  
FACES**

(75) Inventors: **Greg Gilley**, Los Altos, CA (US);  
**Joshua Fagans**, Redwood City, CA  
(US); **Nikhil Bhatt**, Cupertino, CA  
(US); **Jeff Albouze**, Boulder Creek,  
CA (US); **Simeon Leifer**, Santa  
Clara, CA (US); **Timothy B.**  
**Martin**, Sunnyvale, CA (US);  
**Gregory Charles Lindley**,  
Sunnyvale, CA (US)

**Related U.S. Application Data**

(63) Continuation-in-part of application No. 12/436,069,  
filed on May 5, 2009.  
(60) Provisional application No. 61/142,606, filed on Jan.  
5, 2009.

**Publication Classification**

(51) **Int. Cl.**  
**G06K 9/00** (2006.01)  
(52) **U.S. Cl.** ..... **382/118**  
(57) **ABSTRACT**

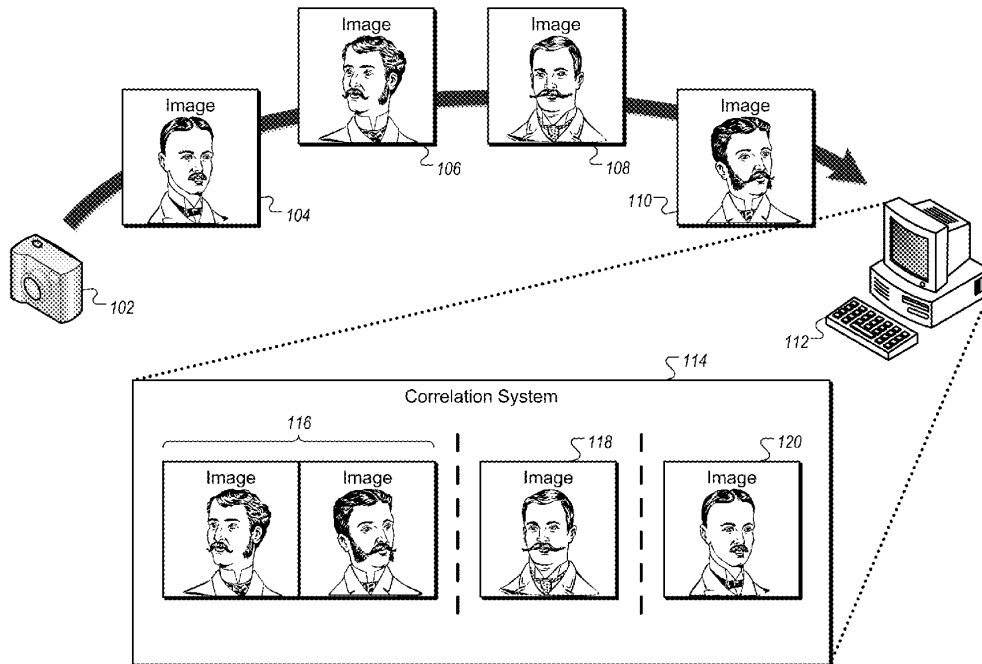
Methods and systems are presented for organizing images. In one aspect, a method can include generating a correlation value indicating a likelihood that a face included in a test image corresponds to a face associated with a base image, determining that a correlation threshold exceeds the correlation value and that the correlation value exceeds a non-correlation threshold, generating a similarity score based on one or more exposure values and one or more color distribution values corresponding to the test image and the base image, combining the similarity score with the correlation value to generate a weighted correlation value, and determining that the test image and the base image are correlated when the weighted correlation value exceeds the correlation threshold.

Correspondence Address:  
**FISH & RICHARDSON P.C.**  
**PO BOX 1022**  
**MINNEAPOLIS, MN 55440-1022 (US)**

(73) Assignee: **APPLE INC.**, Cupertino, CA (US)

(21) Appl. No.: **12/567,541**

(22) Filed: **Sep. 25, 2009**



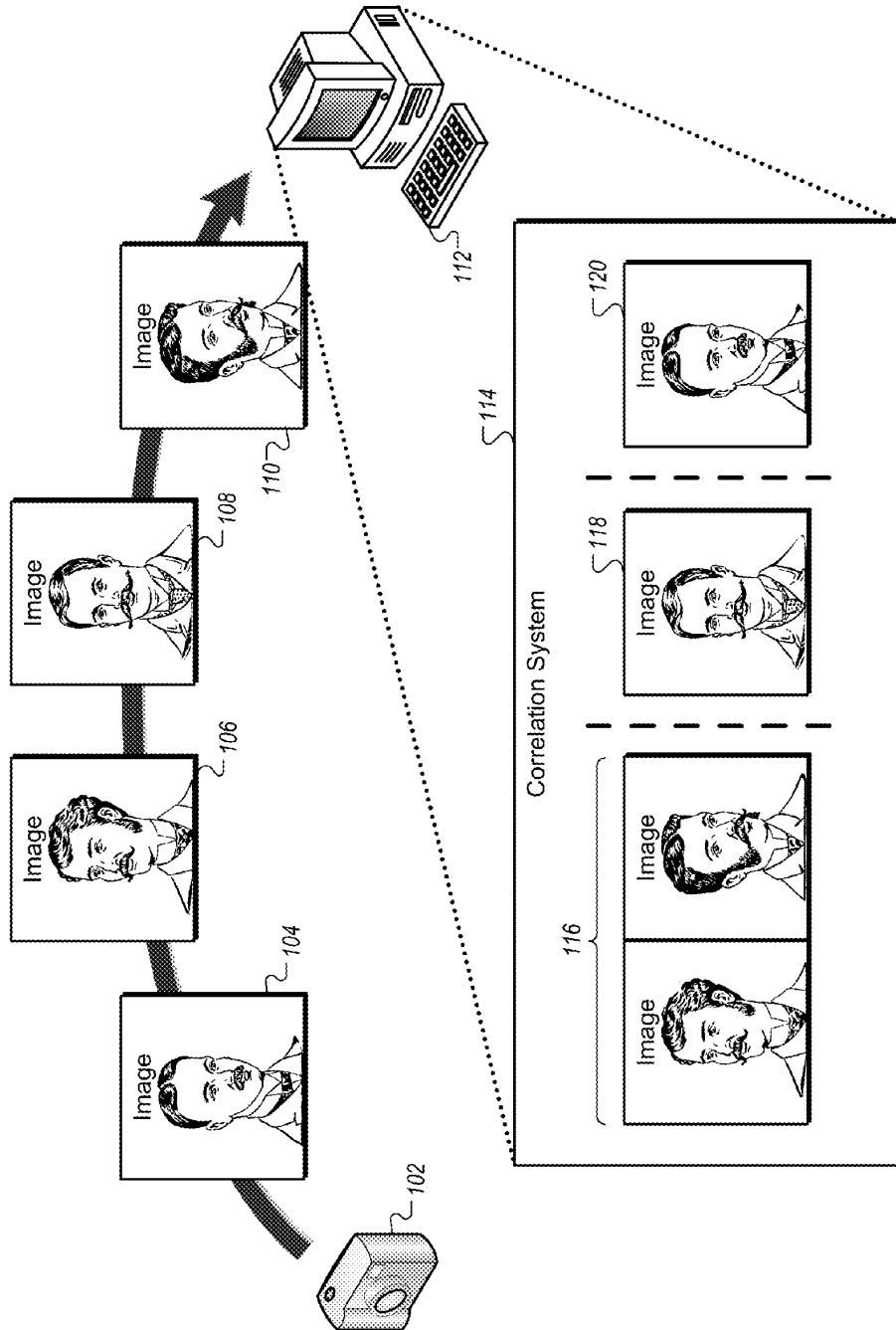
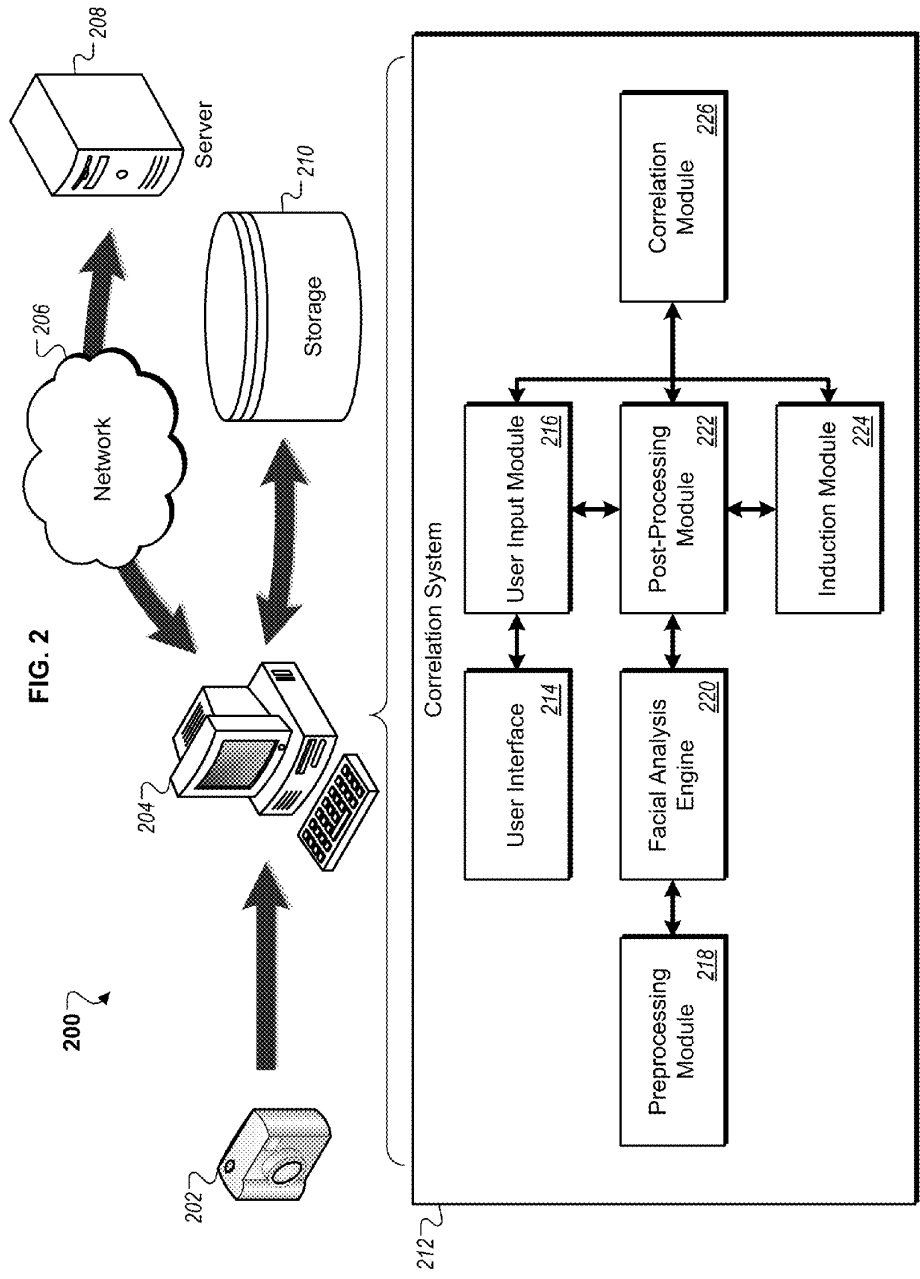


FIG. 1



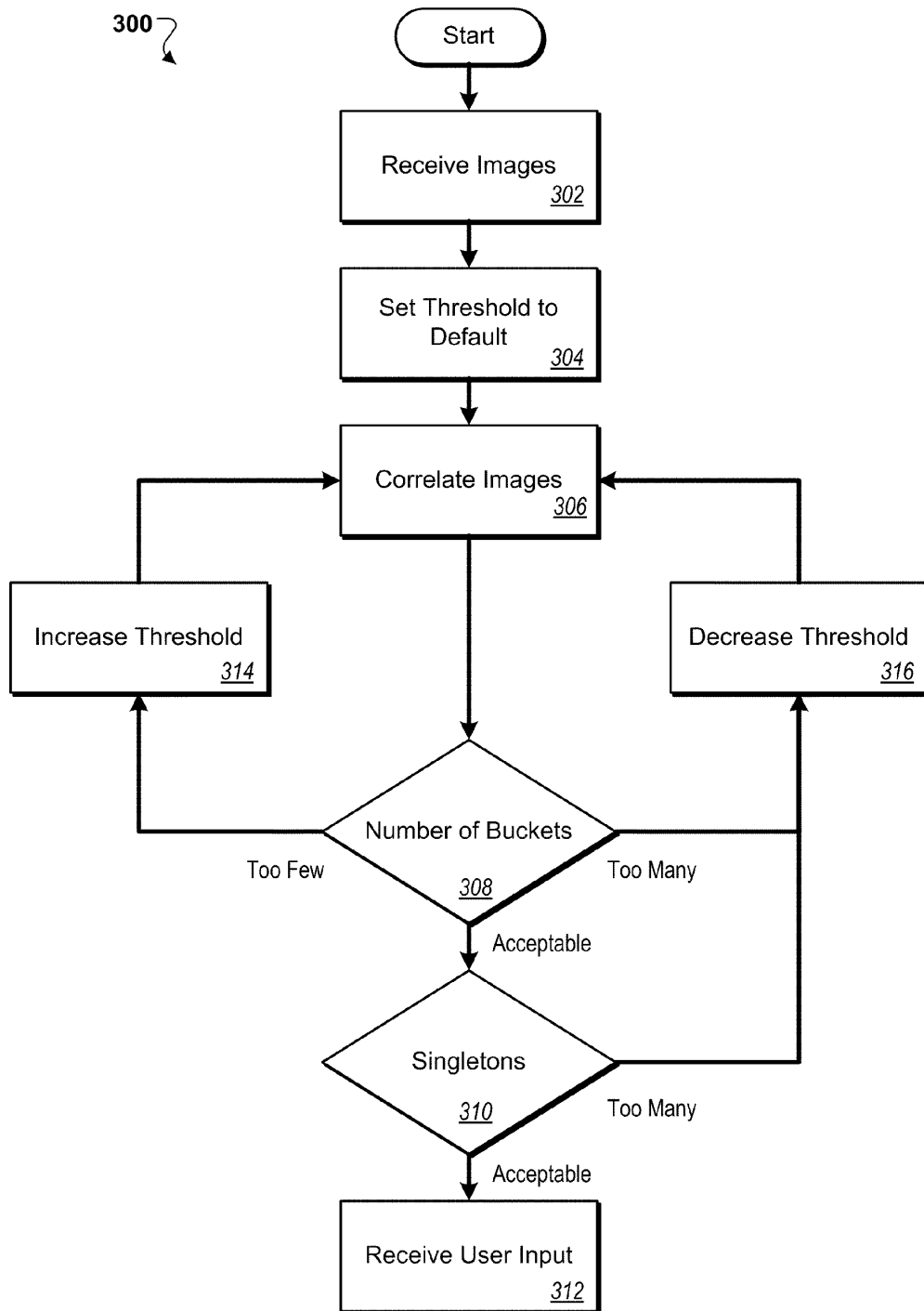


FIG. 3A

350 ↘

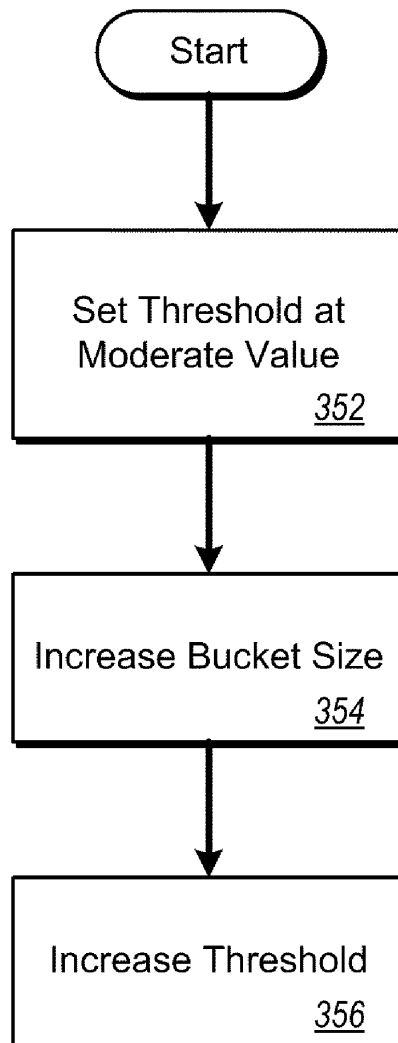


FIG. 3B

# Explore Litigation Insights

Docket Alarm provides insights to develop a more informed litigation strategy and the peace of mind of knowing you're on top of things.

## Real-Time Litigation Alerts



Keep your litigation team up-to-date with **real-time alerts** and advanced team management tools built for the enterprise, all while greatly reducing PACER spend.

Our comprehensive service means we can handle Federal, State, and Administrative courts across the country.

## Advanced Docket Research



With over 230 million records, Docket Alarm's cloud-native docket research platform finds what other services can't. Coverage includes Federal, State, plus PTAB, TTAB, ITC and NLRB decisions, all in one place.

Identify arguments that have been successful in the past with full text, pinpoint searching. Link to case law cited within any court document via Fastcase.

## Analytics At Your Fingertips



Learn what happened the last time a particular judge, opposing counsel or company faced cases similar to yours.

Advanced out-of-the-box PTAB and TTAB analytics are always at your fingertips.

## API

Docket Alarm offers a powerful API (application programming interface) to developers that want to integrate case filings into their apps.

## LAW FIRMS

Build custom dashboards for your attorneys and clients with live data direct from the court.

Automate many repetitive legal tasks like conflict checks, document management, and marketing.

## FINANCIAL INSTITUTIONS

Litigation and bankruptcy checks for companies and debtors.

## E-DISCOVERY AND LEGAL VENDORS

Sync your system to PACER to automate legal marketing.