



US006714215B1

(12) **United States Patent**  
**Flora et al.**

(10) **Patent No.:** **US 6,714,215 B1**  
(45) **Date of Patent:** **Mar. 30, 2004**

(54) **SYSTEM AND METHOD FOR DISPLAYING MEDIA INTERACTIVELY ON A VIDEO DISPLAY DEVICE**

6,362,840 B1 \* 3/2002 Burg et al. .... 345/835  
2001/0033296 A1 \* 10/2001 Fullerton et al. .... 345/730

**OTHER PUBLICATIONS**

(75) Inventors: **William T. Flora**, Seattle, WA (US);  
**Robert Edward Parkin**, Redmond, WA (US);  
**Christopher R. Fox**, Seattle, WA (US);  
**Gregory R. Slayden**, Kirkland, WA (US)

*PC Globe* version 5.0 User's Guide, PC Globe, Inc., pp. 1–2, 4, 10–11, 22–23, 1992.\*

\* cited by examiner

(73) Assignee: **Microsoft Corporation**, Redmond, WA (US)

*Primary Examiner*—Raymond J. Bayerl  
(74) *Attorney, Agent, or Firm*—King & Spalding LLP

(\* ) Notice: Subject to any disclaimer, the term of this patent is extended or adjusted under 35 U.S.C. 154(b) by 0 days.

(57) **ABSTRACT**

(21) Appl. No.: **09/574,375**

A graphical user interface (GUI) allows a user to directly access items of visual and/or audio media by passing a cursor over points on an electronic map. Indicators in the form of icons representing media items can be displayed and can be accessed through a media viewer. A determination is made whether a position indicator or pointer, such as a cursor, is located proximate to a GUI location that is associated with supplemental content in the form of a media item. If so, an indicator is presented to advise the user that supplemental content is indeed associated with that location on the interface. For example, a media icon representing one or more media items can be displayed on the output device proximate to the location of the input device indicator. This indicator serves as a prompt or cue for the user to select the indicator if the user desires to review the supplemental content. A determination is made whether the media icon has been selected in response to an input signal issued by an input device. If so, the selected media item, typically video and/or audio information, is presented to the user via the output device.

(22) Filed: **May 19, 2000**

(51) **Int. Cl.**<sup>7</sup> ..... **G06F 3/14**

(52) **U.S. Cl.** ..... **345/716; 345/859; 345/862; 345/838; 715/501.1**

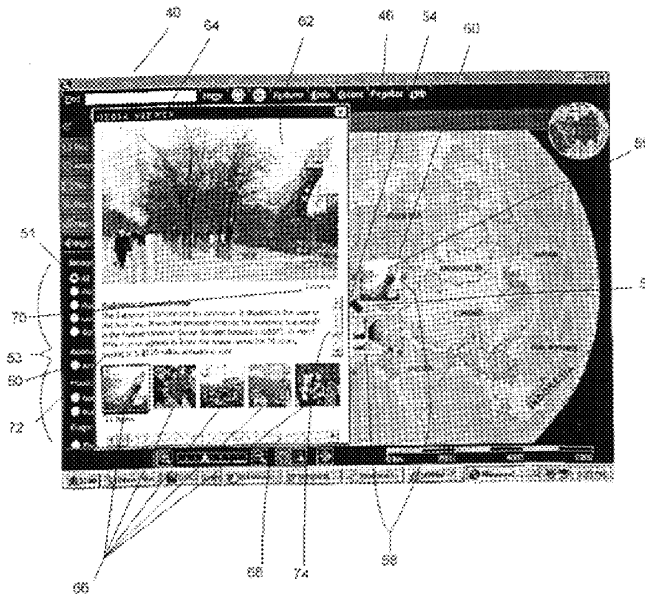
(58) **Field of Search** ..... **345/856, 854, 345/716–718, 859–862, 835, 839, 838, 711, 764, 968, 808, 809, 730; 715/501.1, 500.1; 340/990, 995; 707/104.1**

(56) **References Cited**

**U.S. PATENT DOCUMENTS**

- 5,708,845 A \* 1/1998 Wistendahl et al. .... 715/500.1
- 6,175,840 B1 \* 1/2001 Chen et al. .... 715/501.1
- 6,229,524 B1 \* 5/2001 Chernock et al. .... 345/719 X
- 6,229,541 B1 \* 5/2001 Kamen et al. .... 345/719

**19 Claims, 6 Drawing Sheets**



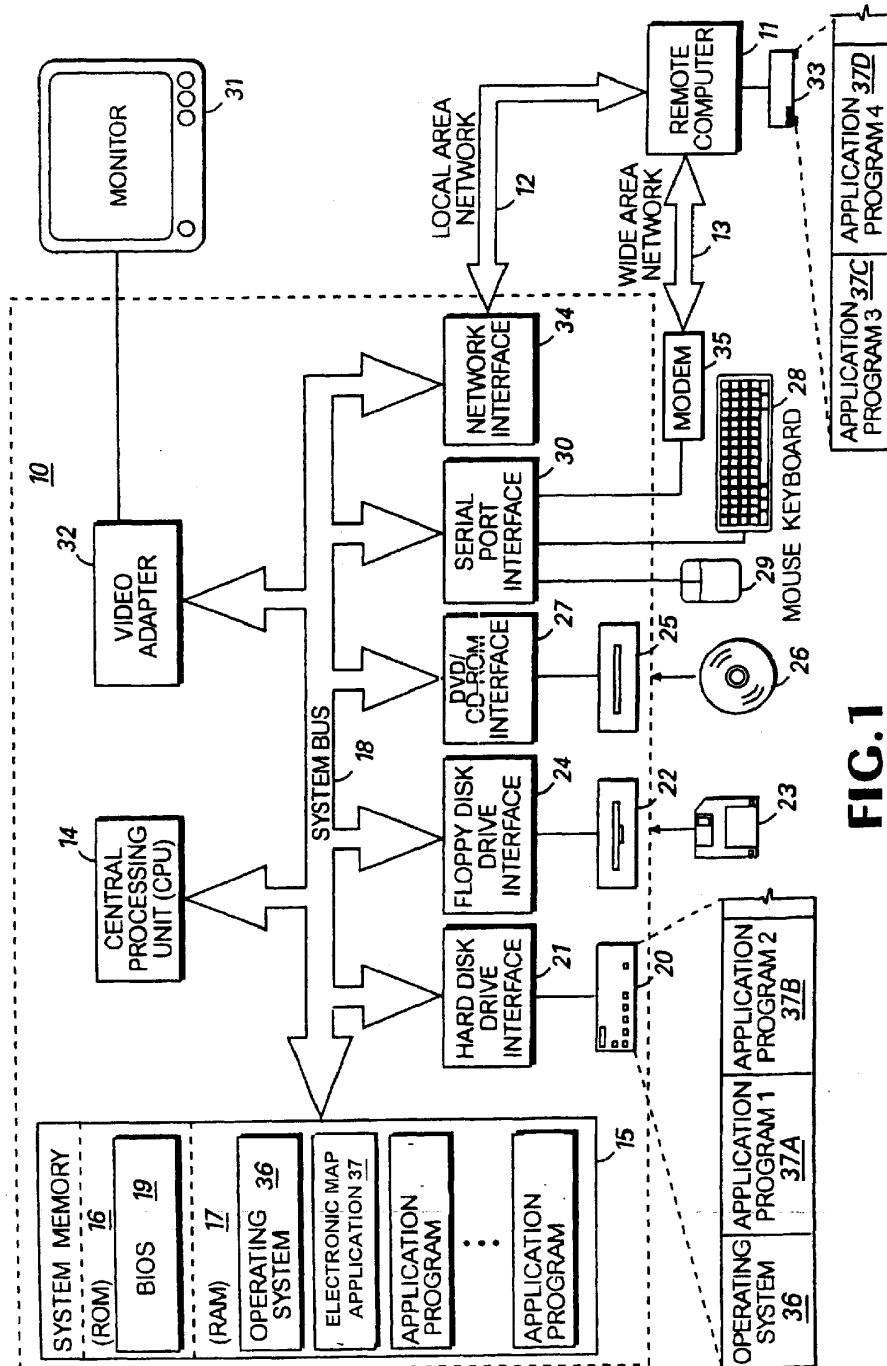


FIG. 1

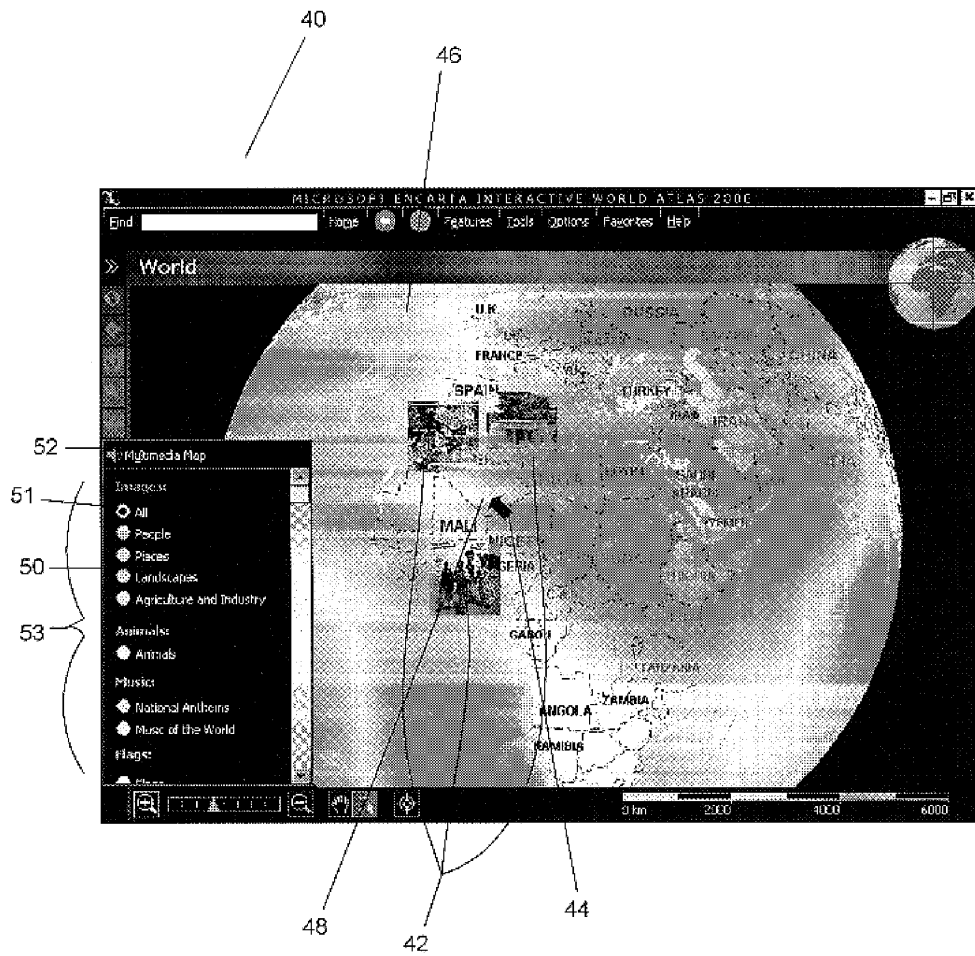


FIG. 2

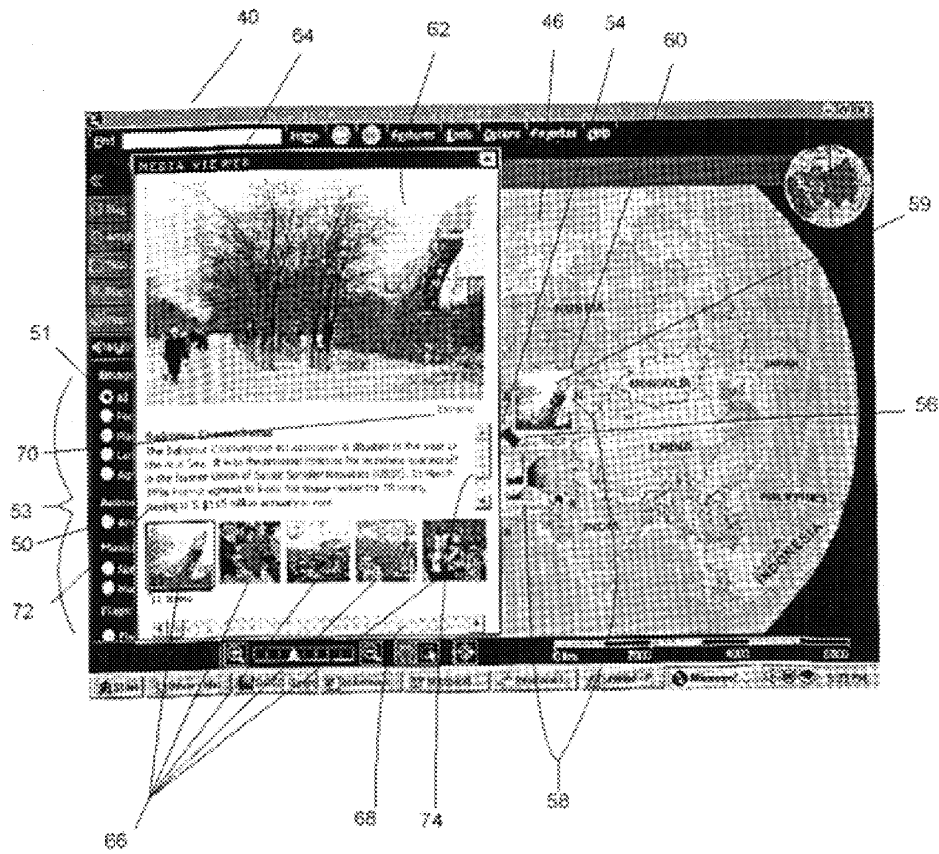


FIG. 3

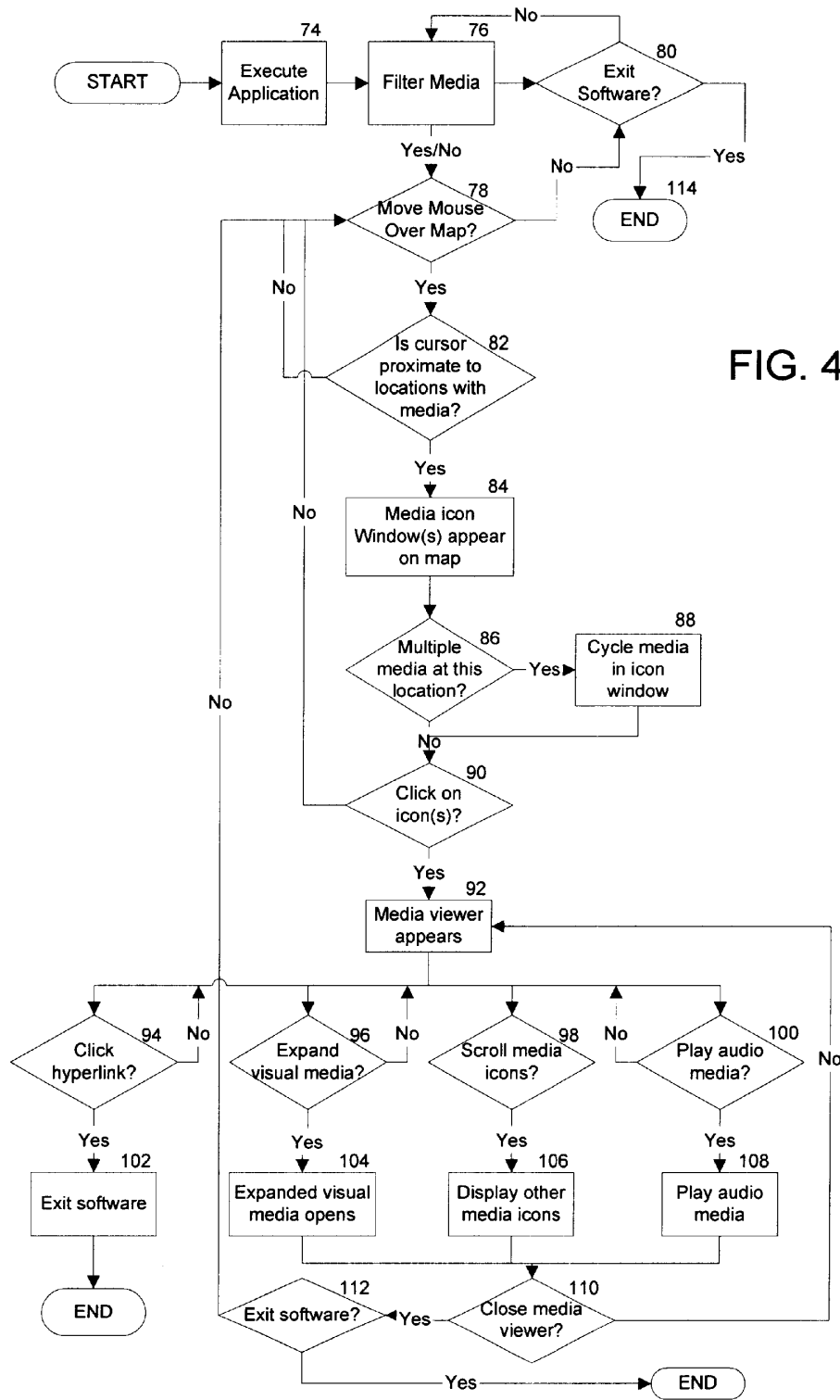


FIG. 4

# Explore Litigation Insights

Docket Alarm provides insights to develop a more informed litigation strategy and the peace of mind of knowing you're on top of things.

## Real-Time Litigation Alerts



Keep your litigation team up-to-date with **real-time alerts** and advanced team management tools built for the enterprise, all while greatly reducing PACER spend.

Our comprehensive service means we can handle Federal, State, and Administrative courts across the country.

## Advanced Docket Research



With over 230 million records, Docket Alarm's cloud-native docket research platform finds what other services can't. Coverage includes Federal, State, plus PTAB, TTAB, ITC and NLRB decisions, all in one place.

Identify arguments that have been successful in the past with full text, pinpoint searching. Link to case law cited within any court document via Fastcase.

## Analytics At Your Fingertips



Learn what happened the last time a particular judge, opposing counsel or company faced cases similar to yours.

Advanced out-of-the-box PTAB and TTAB analytics are always at your fingertips.

## API

Docket Alarm offers a powerful API (application programming interface) to developers that want to integrate case filings into their apps.

## LAW FIRMS

Build custom dashboards for your attorneys and clients with live data direct from the court.

Automate many repetitive legal tasks like conflict checks, document management, and marketing.

## FINANCIAL INSTITUTIONS

Litigation and bankruptcy checks for companies and debtors.

## E-DISCOVERY AND LEGAL VENDORS

Sync your system to PACER to automate legal marketing.