

[54] **POWER CONSUMPTION CONTROL SYSTEM FOR ELECTRONIC DIGITAL DATA PROCESSING DEVICES**

[75] Inventor: **Toshifumi Hoshii**, Fussa, Japan

[73] Assignee: **Casio Computer Co., Ltd.**, Tokyo, Japan

[21] Appl. No.: **102,768**

[22] Filed: **Dec. 12, 1979**

[51] Int. Cl.³ **G06F 11/30; H03K 5/13**

[52] U.S. Cl. **364/900; 307/269; 365/227**

[58] **Field of Search** 235/455, 472; 250/205, 250/568; 340/146.3 F, 146.3 R, 365 R; 365/226-229; 307/203, 269; 364/200 MS File, 900 MS File, 736

[56] **References Cited**

U.S. PATENT DOCUMENTS

| | | | |
|-----------|---------|------------------|---------|
| 3,453,601 | 7/1969 | Bogert et al. | 364/200 |
| 3,736,569 | 5/1973 | Bouricius et al. | 365/227 |
| 3,925,639 | 12/1975 | Hester | 235/472 |

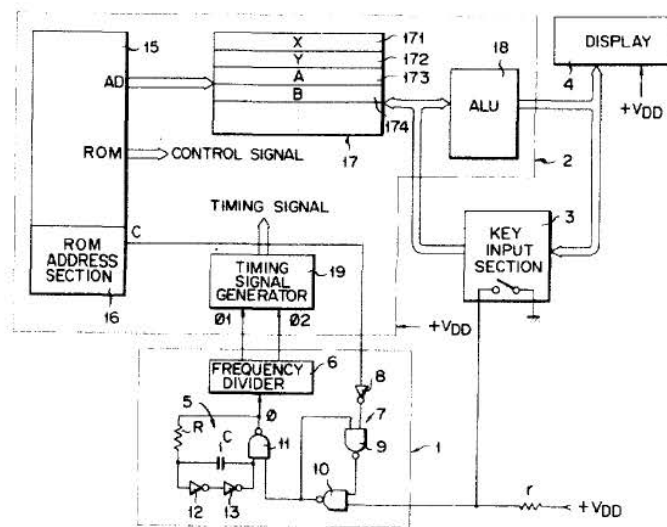
| | | | |
|-----------|--------|-------------------|--------------|
| 3,941,989 | 3/1976 | McLaughlin et al. | 307/203 |
| 3,944,979 | 3/1976 | Kwok | 250/205 |
| 4,072,859 | 2/1978 | McWaters | 250/568 |
| 4,101,072 | 7/1978 | Weaver et al. | 235/455 |
| 4,137,563 | 1/1979 | Tsunoda | 307/269 |
| 4,143,358 | 3/1979 | Neff | 340/146.3 SY |
| 4,144,580 | 3/1979 | Seki et al. | 340/365 R |
| 4,160,156 | 7/1979 | Sherer | 235/472 |

Primary Examiner—Leo H. Boudreau
Attorney, Agent, or Firm—Frishauf, Holtz, Goodman and Woodward

[57] **ABSTRACT**

A power consumption control system for electronic digital data processing devices is provided with a counter circuit to update a time count operation and to count a given time every time any one of the keys in the key input section is depressed. When none of the keys in the key input section is depressed before the counter circuit finishes the count of the given time, the oscillation operation of the oscillator circuit which supplies the clock pulse to the data processing device is stopped.

9 Claims, 39 Drawing Figures



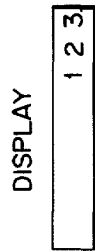
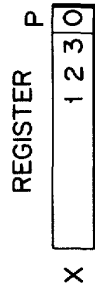


FIG. 2(a)



FIG. 2(b) AUTOMATIC OFF



FIG. 2(c) KEY ON

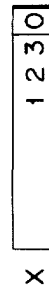


FIG. 2(d) KEY OFF

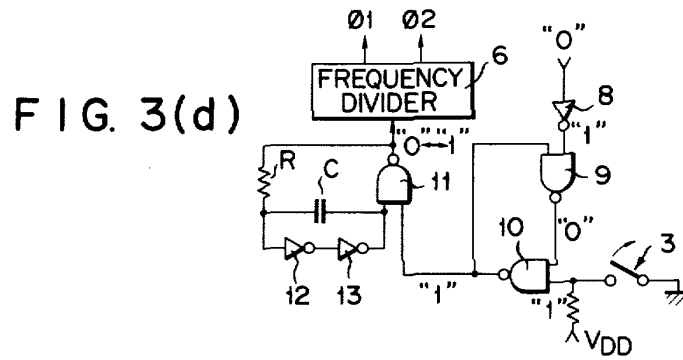
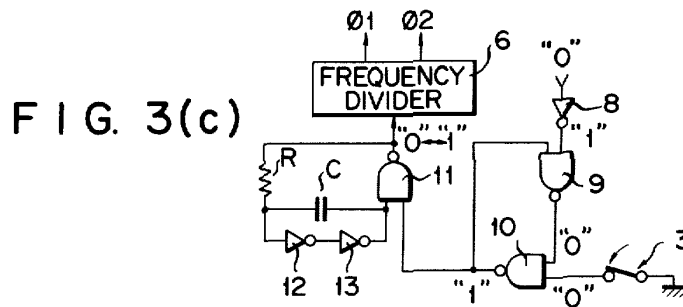
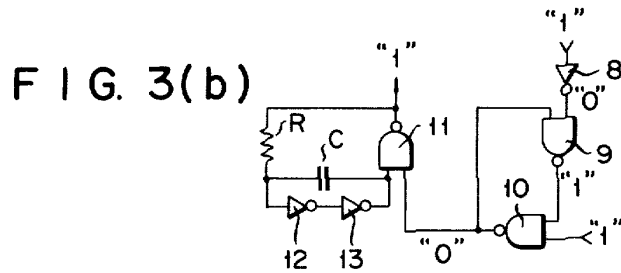
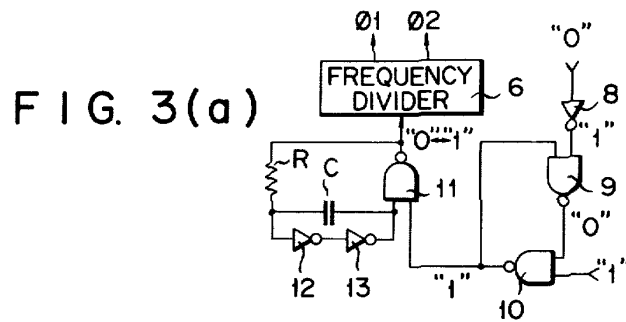
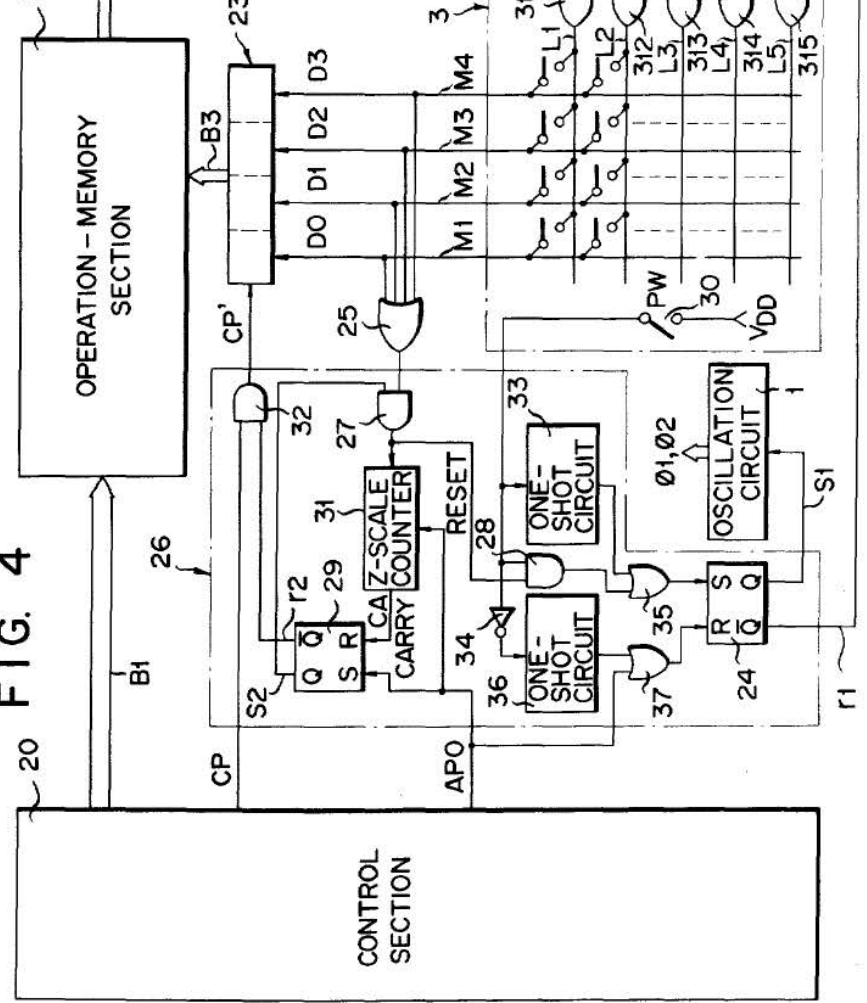


FIG. 4



Explore Litigation Insights

Docket Alarm provides insights to develop a more informed litigation strategy and the peace of mind of knowing you're on top of things.

Real-Time Litigation Alerts



Keep your litigation team up-to-date with **real-time alerts** and advanced team management tools built for the enterprise, all while greatly reducing PACER spend.

Our comprehensive service means we can handle Federal, State, and Administrative courts across the country.

Advanced Docket Research



With over 230 million records, Docket Alarm's cloud-native docket research platform finds what other services can't. Coverage includes Federal, State, plus PTAB, TTAB, ITC and NLRB decisions, all in one place.

Identify arguments that have been successful in the past with full text, pinpoint searching. Link to case law cited within any court document via Fastcase.

Analytics At Your Fingertips



Learn what happened the last time a particular judge, opposing counsel or company faced cases similar to yours.

Advanced out-of-the-box PTAB and TTAB analytics are always at your fingertips.

API

Docket Alarm offers a powerful API (application programming interface) to developers that want to integrate case filings into their apps.

LAW FIRMS

Build custom dashboards for your attorneys and clients with live data direct from the court.

Automate many repetitive legal tasks like conflict checks, document management, and marketing.

FINANCIAL INSTITUTIONS

Litigation and bankruptcy checks for companies and debtors.

E-DISCOVERY AND LEGAL VENDORS

Sync your system to PACER to automate legal marketing.