

(12) **United States Patent**  
**Lopke**

(10) **Patent No.:** **US 6,553,310 B1**  
(45) **Date of Patent:** **Apr. 22, 2003**

(54) **METHOD OF AND APPARATUS FOR TOPOLOGICALLY BASED RETRIEVAL OF INFORMATION**

(75) Inventor: **Michael S. Lopke**, Boise, ID (US)

(73) Assignee: **Hewlett-Packard Company**, Palo Alto, CA (US)

(\*) Notice: Subject to any disclaimer, the term of this patent is extended or adjusted under 35 U.S.C. 154(b) by 0 days.

6,047,327 A *	4/2000	Tso et al.	709/232
6,067,521 A *	5/2000	Ishii et al.	704/275
6,122,658 A *	9/2000	Chaddha	709/203
6,148,260 A *	11/2000	Musk et al.	701/200
6,154,172 A *	11/2000	Piccioneili et al.	342/357.1
6,170,013 B1 *	1/2001	Murata	709/229
6,202,023 B1 *	3/2001	Hancock et al.	701/201
6,216,153 B1 *	4/2001	Vortriede	709/203
6,222,483 B1 *	4/2001	Twitchell et al.	342/357.09
6,240,360 B1 *	5/2001	Phelan	701/208
6,345,266 B1 *	2/2002	Ganguly et al.	707/1

\* cited by examiner

*Primary Examiner*—Thomas G. Black  
*Assistant Examiner*—Tuan C To

(21) Appl. No.: **09/712,874**

(22) Filed: **Nov. 14, 2000**

(51) **Int. Cl.<sup>7</sup>** ..... **G06F 15/16**

(52) **U.S. Cl.** ..... **701/213; 709/203; 709/223; 709/229; 709/217; 709/104**

(58) **Field of Search** ..... **701/213, 200, 701/201, 211, 207; 709/203, 226, 224, 227, 104, 223, 229, 217, 219, 232, 249; 704/275; 340/988**

(56) **References Cited**

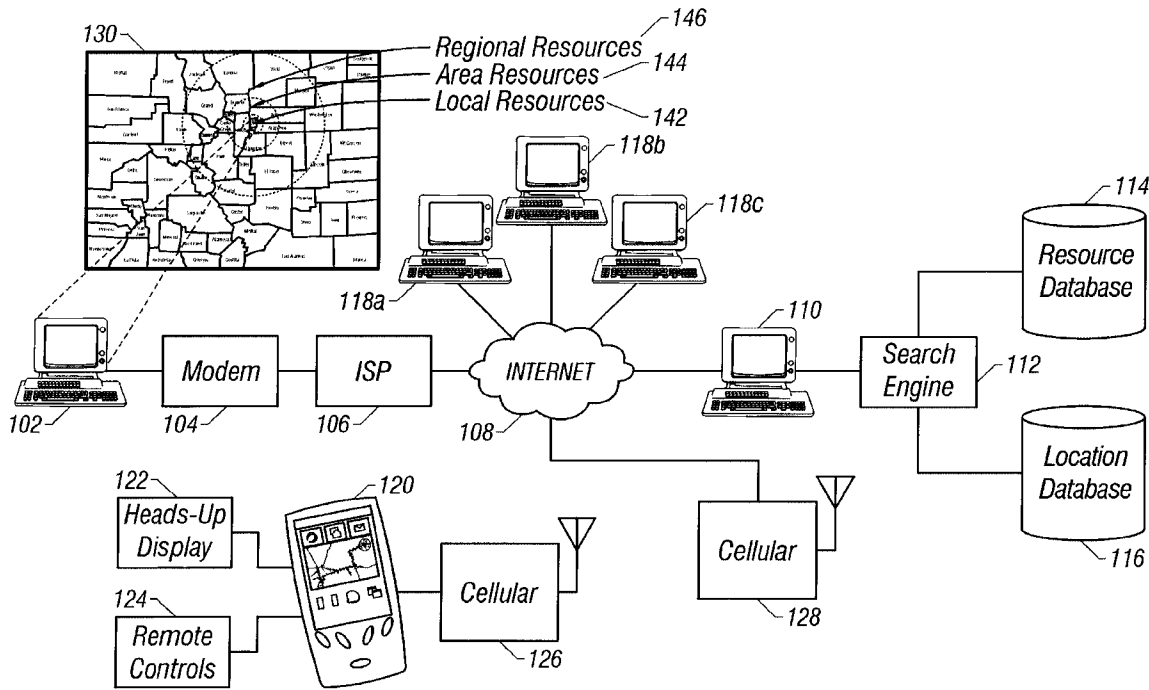
**U.S. PATENT DOCUMENTS**

5,511,208 A *	4/1996	Boyles et al.	395/800
5,560,008 A *	9/1996	Johnson et al.	395/650
5,825,306 A *	10/1998	Hiyokawa et al.	340/988

(57) **ABSTRACT**

An apparatus for, and a method of, customizing an Internet session to the current location of the user which can, through a variety of methods, identify a user's specific location and once the specific location is determined, customize Internet information for the user's specific location. The location can be determined through a GPS device, user input or calculation and application of location parameters from a known position or similar methods. The customized Internet information can be accessed via, for example, CDPD, and user specific queries can be addressed through Internet search capabilities coupled with local processing.

**24 Claims, 6 Drawing Sheets**



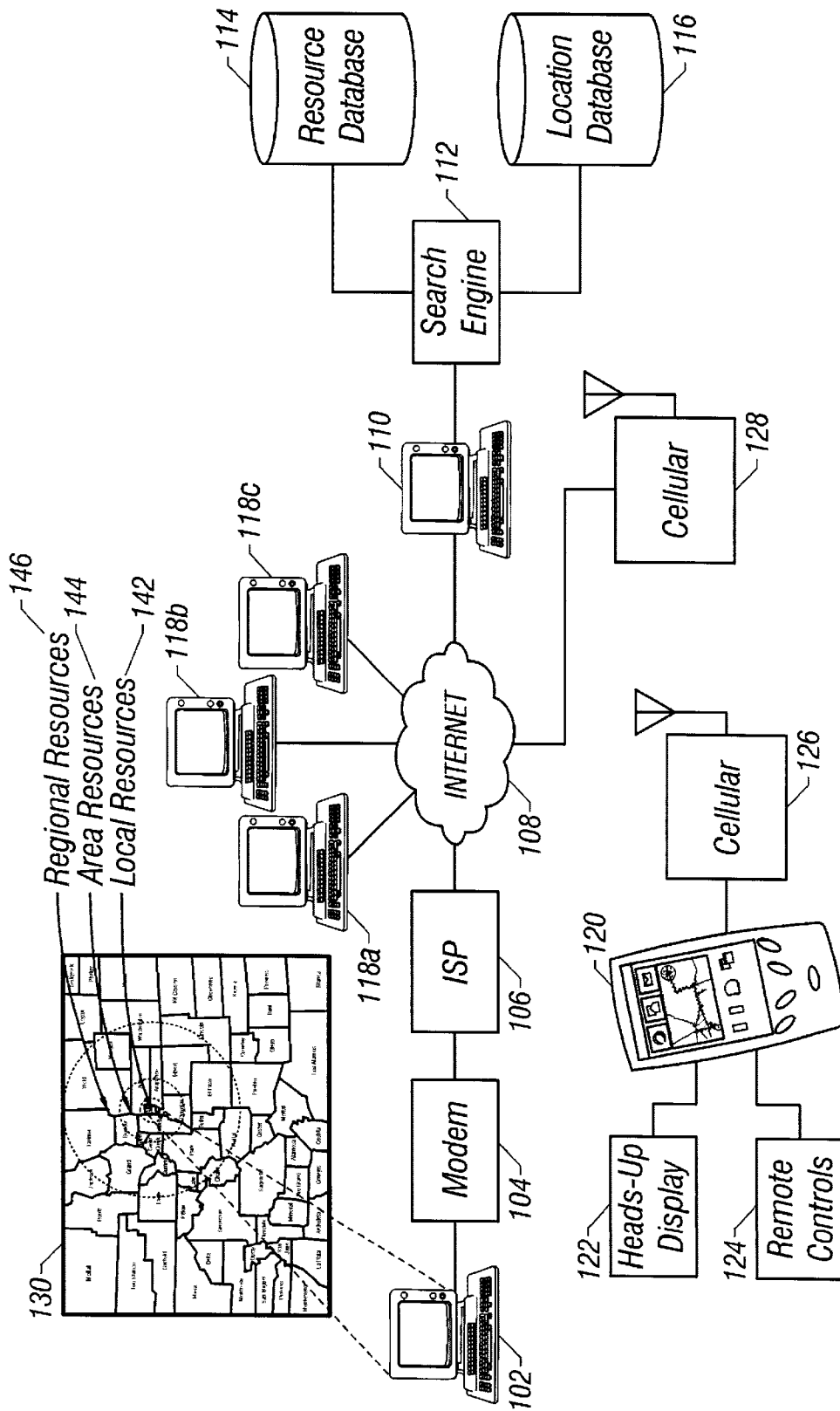


FIG. 1

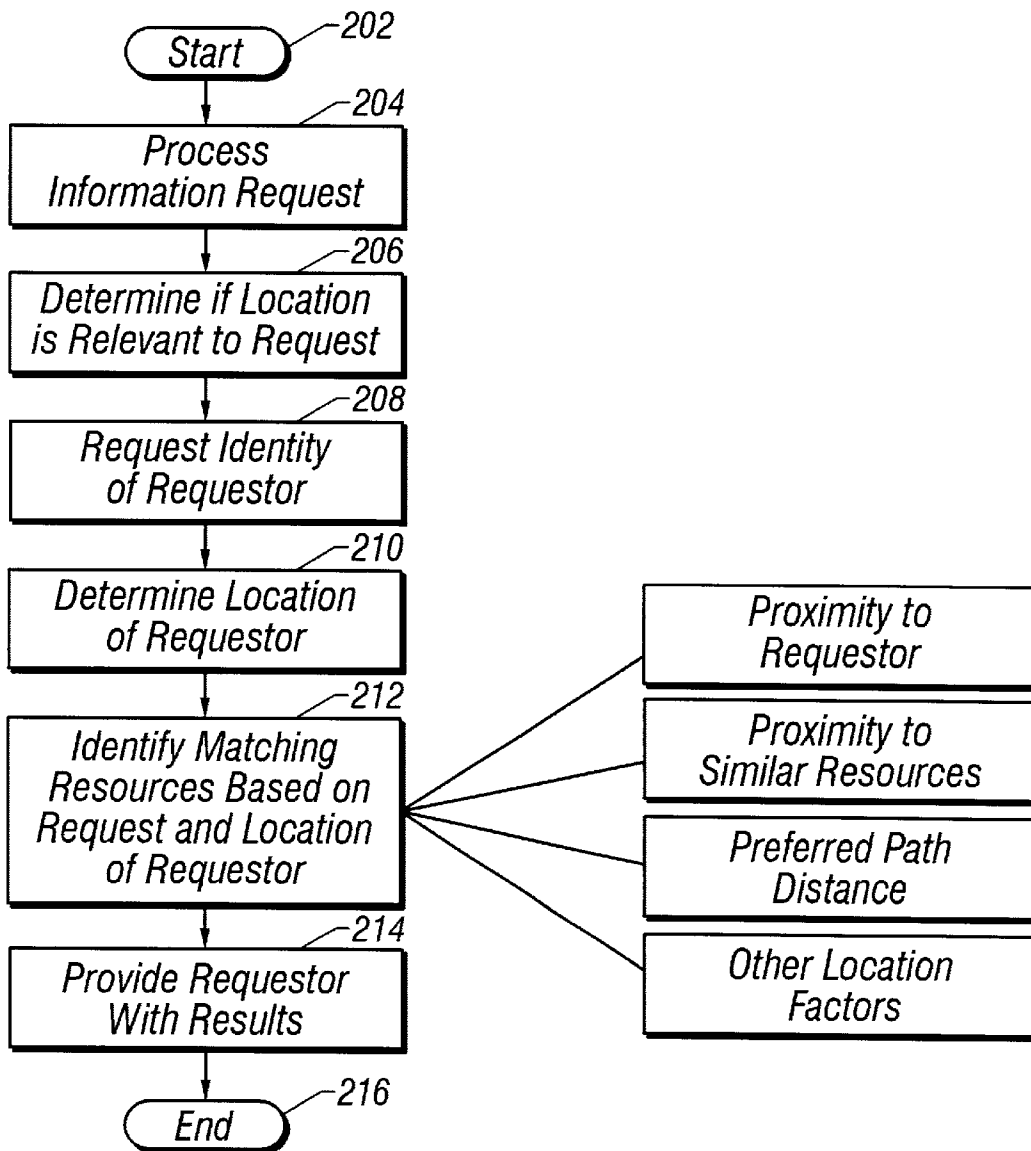


FIG. 2

304 Resource Location						302		306 Longitude		308 Resource Categories		312		314	
										310 Primary		Secondary		Pointer to Additional Resource Information (URL, etc.)	
Degrees	Minutes	Seconds	Degrees	Minutes	Seconds										

FIG. 3

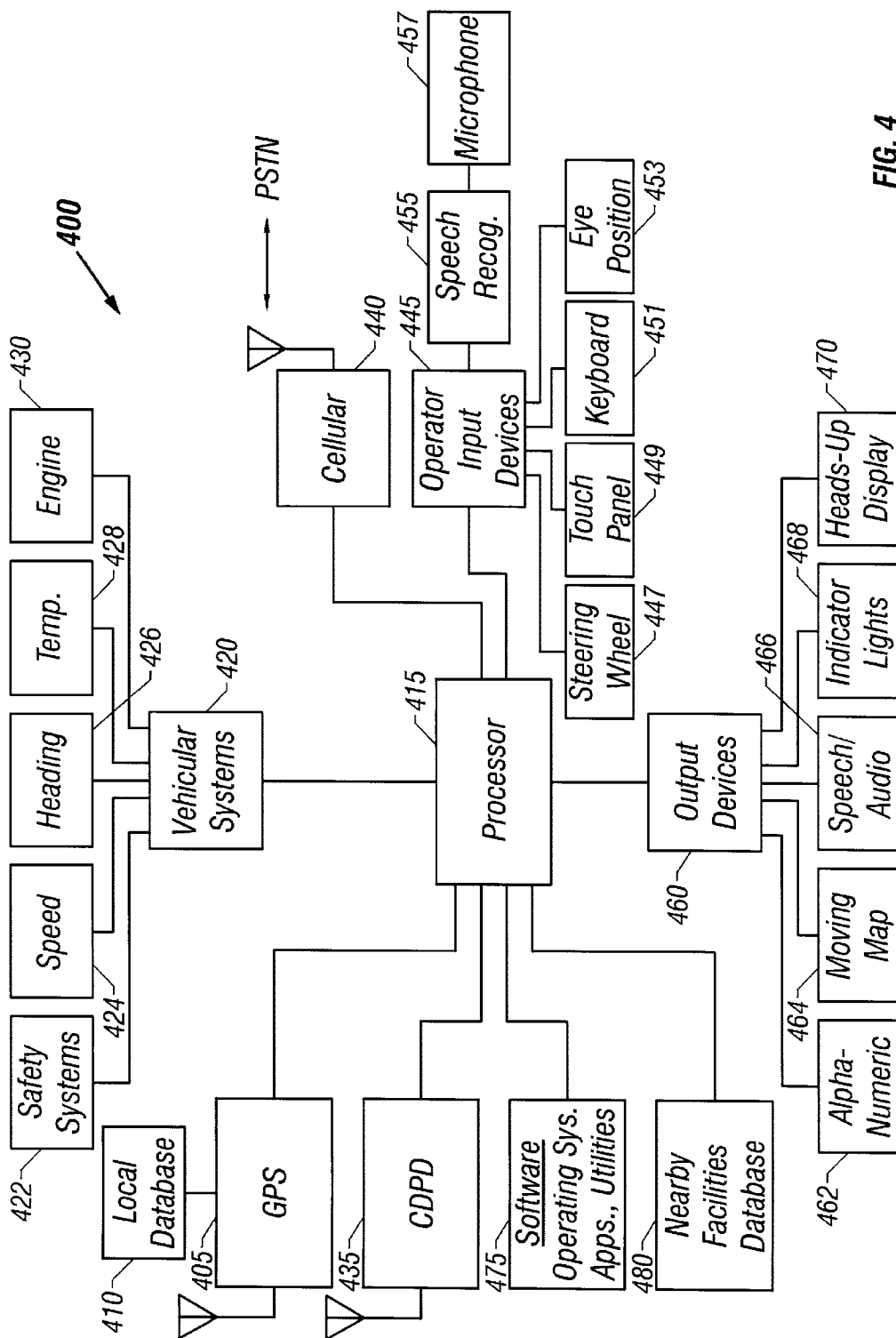


FIG. 4

# Explore Litigation Insights

Docket Alarm provides insights to develop a more informed litigation strategy and the peace of mind of knowing you're on top of things.

## Real-Time Litigation Alerts



Keep your litigation team up-to-date with **real-time alerts** and advanced team management tools built for the enterprise, all while greatly reducing PACER spend.

Our comprehensive service means we can handle Federal, State, and Administrative courts across the country.

## Advanced Docket Research



With over 230 million records, Docket Alarm's cloud-native docket research platform finds what other services can't. Coverage includes Federal, State, plus PTAB, TTAB, ITC and NLRB decisions, all in one place.

Identify arguments that have been successful in the past with full text, pinpoint searching. Link to case law cited within any court document via Fastcase.

## Analytics At Your Fingertips



Learn what happened the last time a particular judge, opposing counsel or company faced cases similar to yours.

Advanced out-of-the-box PTAB and TTAB analytics are always at your fingertips.

## API

Docket Alarm offers a powerful API (application programming interface) to developers that want to integrate case filings into their apps.

## LAW FIRMS

Build custom dashboards for your attorneys and clients with live data direct from the court.

Automate many repetitive legal tasks like conflict checks, document management, and marketing.

## FINANCIAL INSTITUTIONS

Litigation and bankruptcy checks for companies and debtors.

## E-DISCOVERY AND LEGAL VENDORS

Sync your system to PACER to automate legal marketing.