



US 20070242131A1

(19) **United States**

(12) **Patent Application Publication**
Sanz-Pastor et al.

(10) **Pub. No.: US 2007/0242131 A1**

(43) **Pub. Date: Oct. 18, 2007**

(54) **LOCATION BASED WIRELESS
COLLABORATIVE ENVIRONMENT WITH A
VISUAL USER INTERFACE**

(76) Inventors: **Ignacio Sanz-Pastor**, San Francisco,
CA (US); **David L. Morgan III**,
Leewood, CA (US); **Javier Castellar**,
Truckee, CA (US)

Correspondence Address:
FENWICK & WEST LLP
SILICON VALLEY CENTER
801 CALIFORNIA STREET
MOUNTAIN VIEW, CA 94041 (US)

(21) Appl. No.: **11/618,672**

(22) Filed: **Dec. 29, 2006**

Related U.S. Application Data

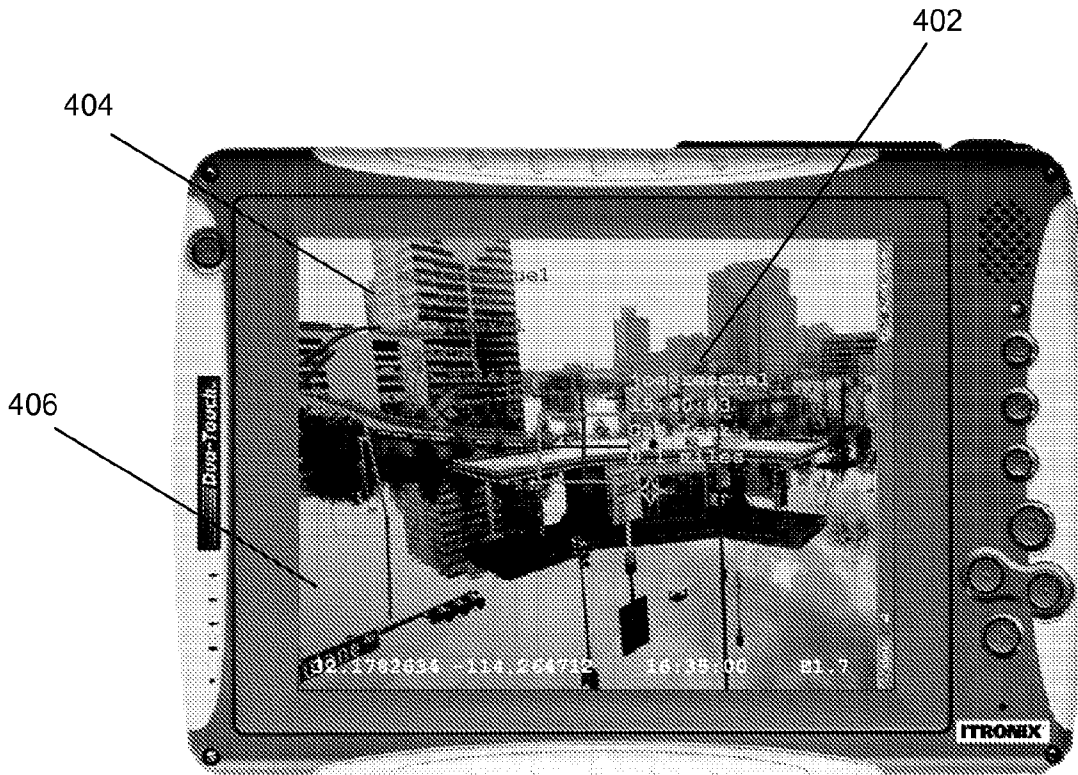
(60) Provisional application No. 60/755,732, filed on Dec.
29, 2005.

Publication Classification

(51) **Int. Cl.**
H04N 7/14 (2006.01)
H04M 3/42 (2006.01)
H04Q 7/20 (2006.01)
(52) **U.S. Cl.** **348/14.02**; 455/416; 455/456.6;
455/457; 348/E07

(57) **ABSTRACT**

A wireless networked device incorporating a display, a video camera and a geo-location system receives geo-located data messages from a server system. Messages can be viewed by panning the device, revealing the message's real world location as icons and text overlaid on top of the camera input on the display. The user can reply to the message from her location, add data to an existing message at its original location, send new messages to other users of the system or place a message at a location for other users. World Wide Web geo-located data can be explored using the system's user interface as a browser. The server system uses the physical location of the receiving device to limit messages and data sent to each device according to range and filtering criteria, and can determine line of sight between the device and each actual message to simulate occlusion effects.



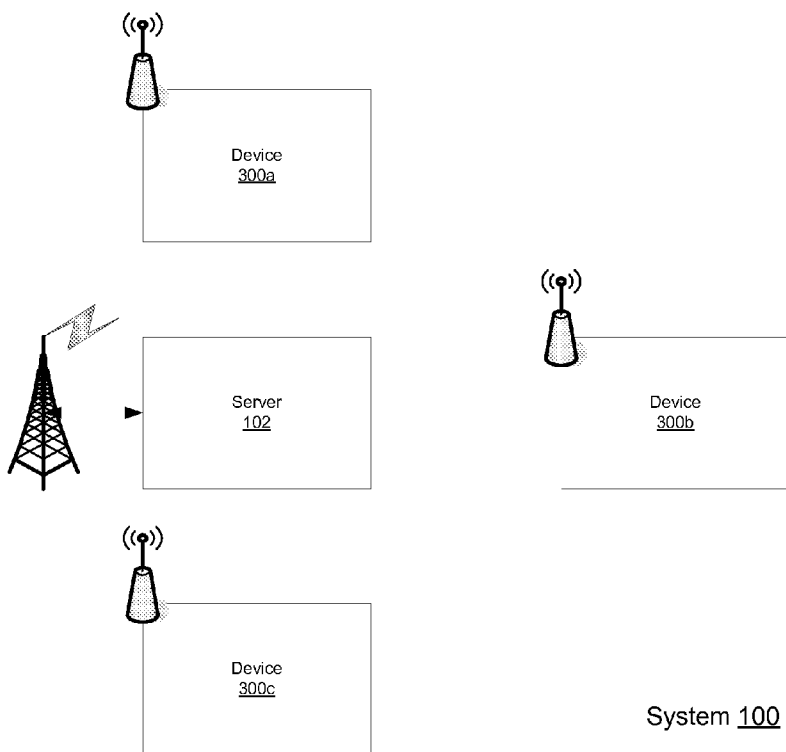


Fig. 1

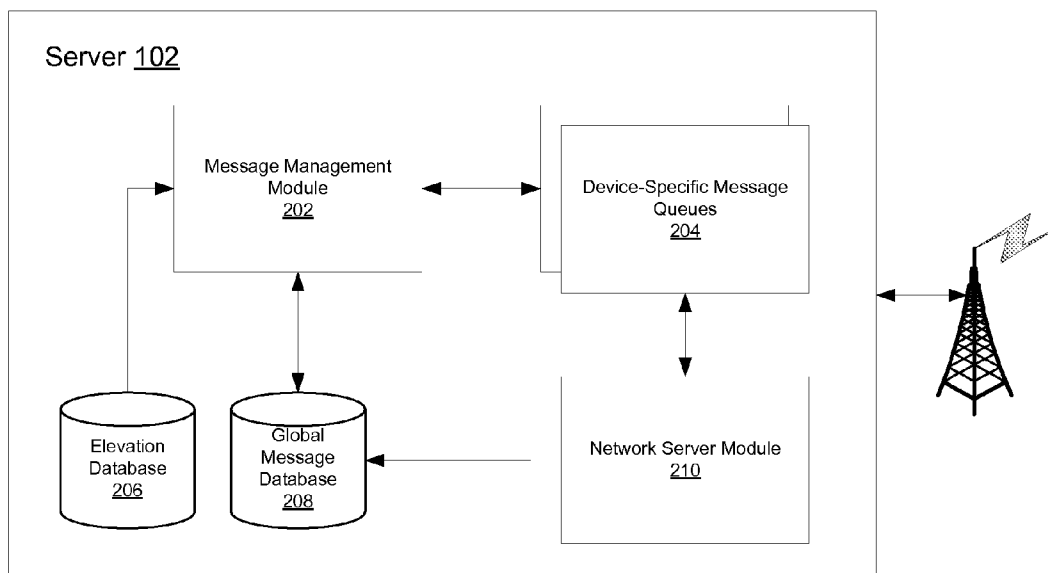


Fig. 2

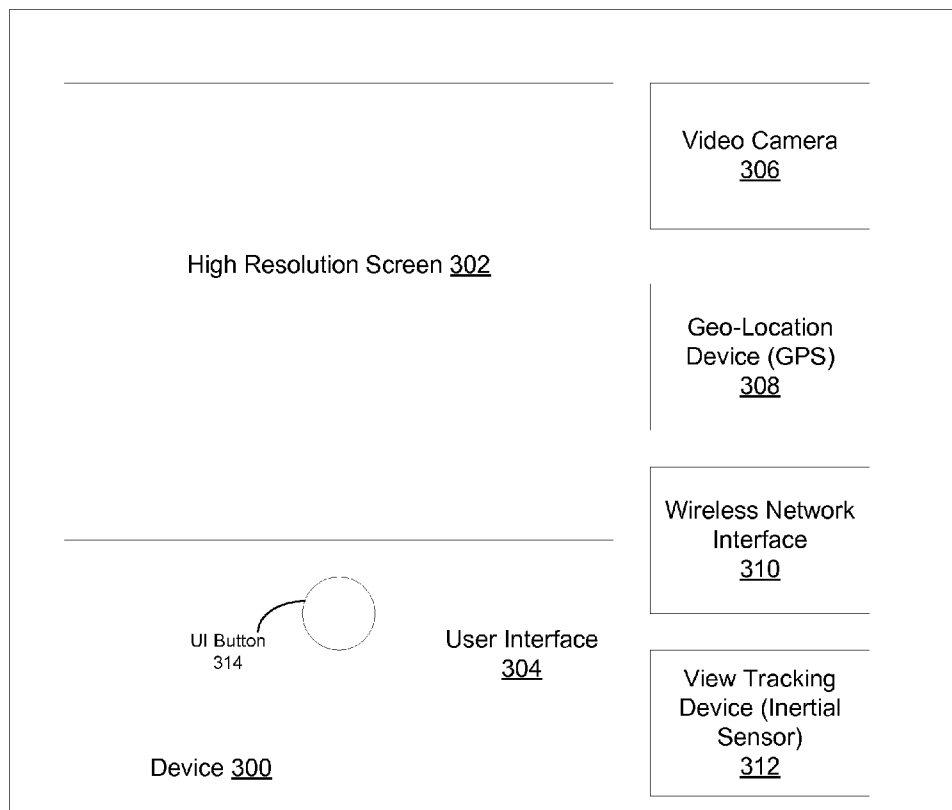


Fig. 3



Fig. 4

Explore Litigation Insights

Docket Alarm provides insights to develop a more informed litigation strategy and the peace of mind of knowing you're on top of things.

Real-Time Litigation Alerts



Keep your litigation team up-to-date with **real-time alerts** and advanced team management tools built for the enterprise, all while greatly reducing PACER spend.

Our comprehensive service means we can handle Federal, State, and Administrative courts across the country.

Advanced Docket Research



With over 230 million records, Docket Alarm's cloud-native docket research platform finds what other services can't. Coverage includes Federal, State, plus PTAB, TTAB, ITC and NLRB decisions, all in one place.

Identify arguments that have been successful in the past with full text, pinpoint searching. Link to case law cited within any court document via Fastcase.

Analytics At Your Fingertips



Learn what happened the last time a particular judge, opposing counsel or company faced cases similar to yours.

Advanced out-of-the-box PTAB and TTAB analytics are always at your fingertips.

API

Docket Alarm offers a powerful API (application programming interface) to developers that want to integrate case filings into their apps.

LAW FIRMS

Build custom dashboards for your attorneys and clients with live data direct from the court.

Automate many repetitive legal tasks like conflict checks, document management, and marketing.

FINANCIAL INSTITUTIONS

Litigation and bankruptcy checks for companies and debtors.

E-DISCOVERY AND LEGAL VENDORS

Sync your system to PACER to automate legal marketing.