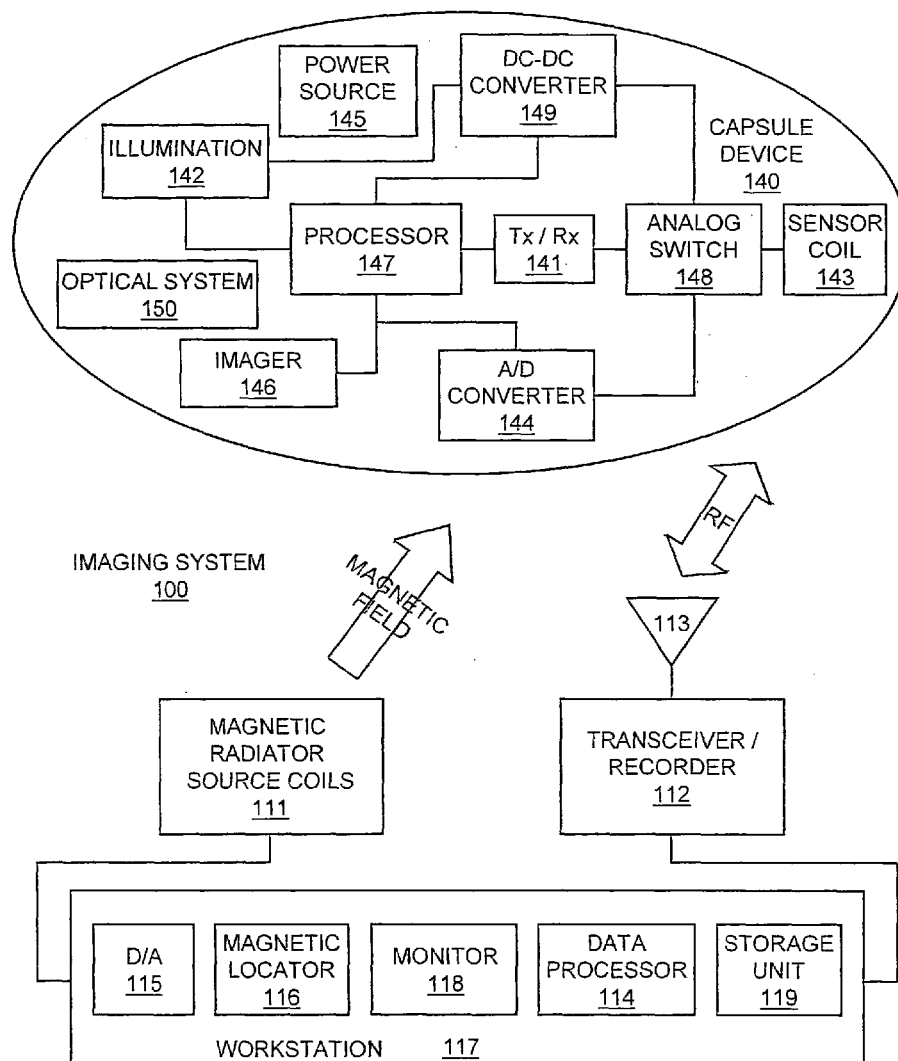


(12) **Patent Application Publication**
Steinberg et al.

(43) **Pub. Date:** **May 26, 2011**

This invention relates to methods and apparatus for localizing an in vivo imaging device by means of a single magnetic source coil assembly and a single magnetic detector coil assembly. This invention also relates to methods and apparatus to enable the use of a single magnetic source coil assembly to also transmit and receive information, images, and controls signals, as well as for the coil assembly to be used in DC-DC voltage conversion. A user interface with a display provides the user with the option of viewing selected images captured by the in vivo imaging device.



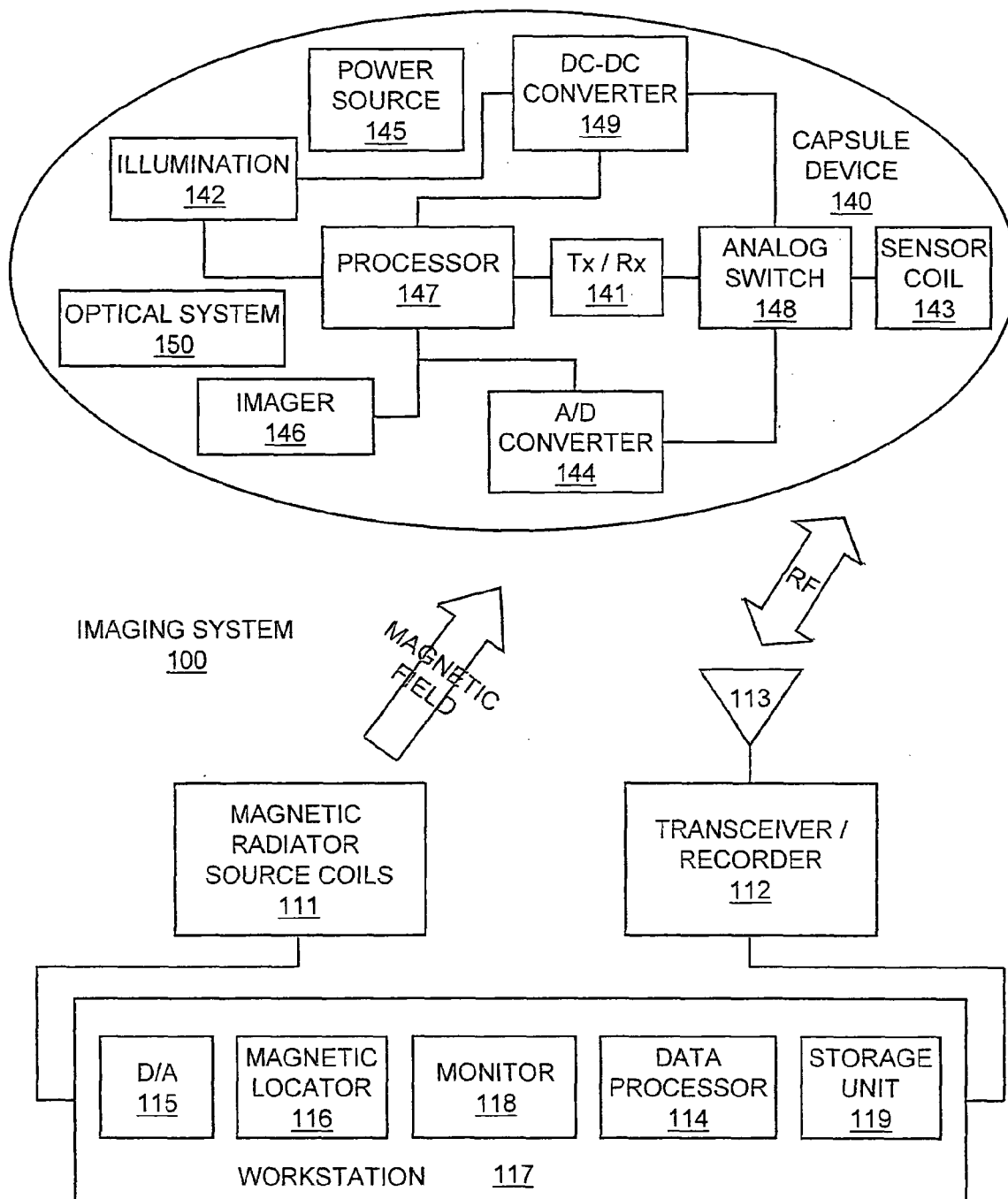


Figure 1

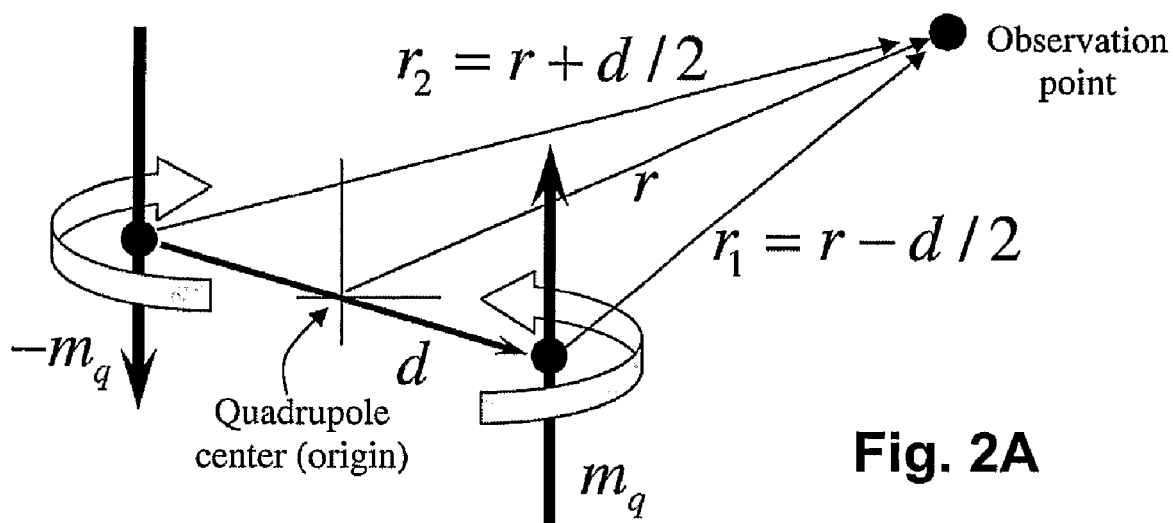


Fig. 2A

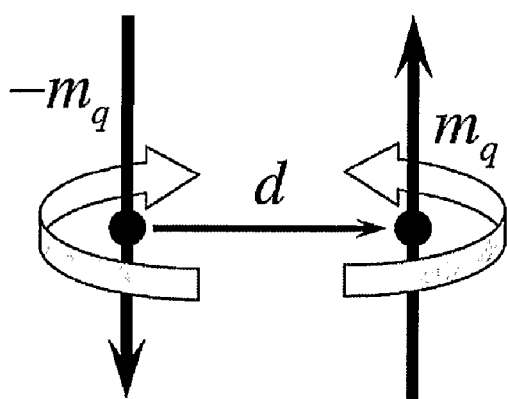


Fig. 2B

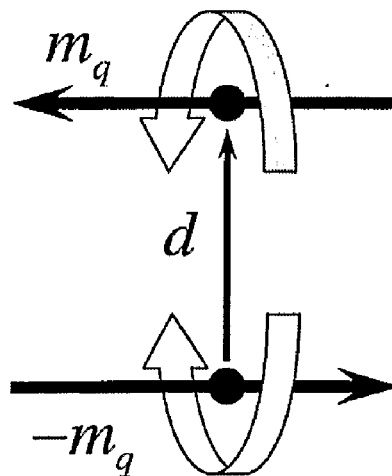


Fig. 2C

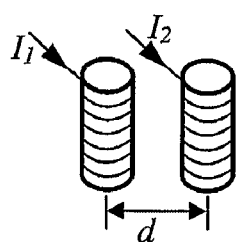


Fig. 3A

Fig. 3B

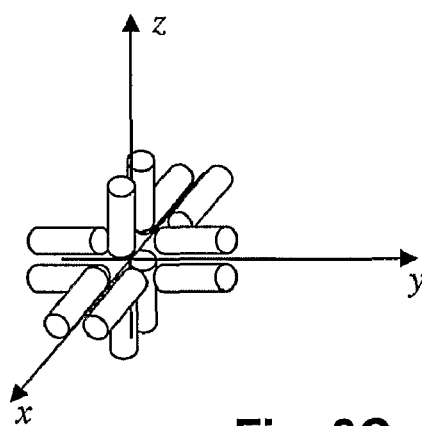
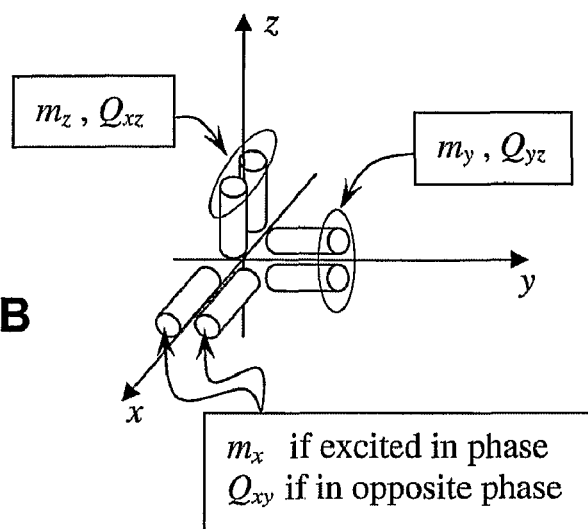


Fig. 3C

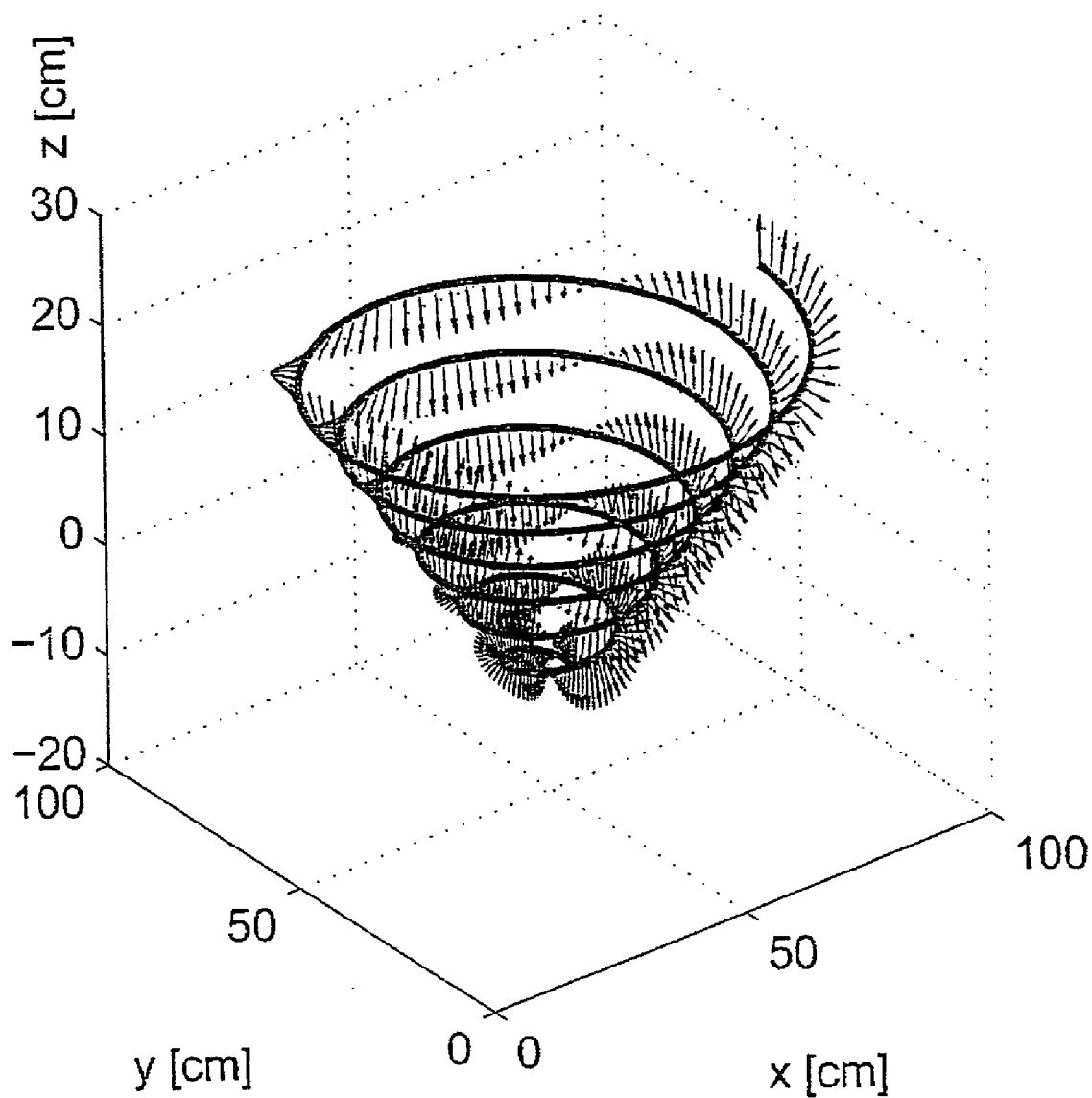


Fig.4

Explore Litigation Insights

Docket Alarm provides insights to develop a more informed litigation strategy and the peace of mind of knowing you're on top of things.

Real-Time Litigation Alerts



Keep your litigation team up-to-date with **real-time alerts** and advanced team management tools built for the enterprise, all while greatly reducing PACER spend.

Our comprehensive service means we can handle Federal, State, and Administrative courts across the country.

Advanced Docket Research



With over 230 million records, Docket Alarm's cloud-native docket research platform finds what other services can't. Coverage includes Federal, State, plus PTAB, TTAB, ITC and NLRB decisions, all in one place.

Identify arguments that have been successful in the past with full text, pinpoint searching. Link to case law cited within any court document via Fastcase.

Analytics At Your Fingertips



Learn what happened the last time a particular judge, opposing counsel or company faced cases similar to yours.

Advanced out-of-the-box PTAB and TTAB analytics are always at your fingertips.

API

Docket Alarm offers a powerful API (application programming interface) to developers that want to integrate case filings into their apps.

LAW FIRMS

Build custom dashboards for your attorneys and clients with live data direct from the court.

Automate many repetitive legal tasks like conflict checks, document management, and marketing.

FINANCIAL INSTITUTIONS

Litigation and bankruptcy checks for companies and debtors.

E-DISCOVERY AND LEGAL VENDORS

Sync your system to PACER to automate legal marketing.