



US006137427A

**United States Patent** [19]  
**Binstead**

[11] **Patent Number:** **6,137,427**  
[45] **Date of Patent:** **\*Oct. 24, 2000**

[54] **MULTIPLE INPUT PROXIMITY DETECTOR AND TOUCHPAD SYSTEM**

5,459,463 10/1995 Gruaz et al. .... 341/33

**FOREIGN PATENT DOCUMENTS**

[76] Inventor: **Ronald Peter Binstead**, 15 Seely Road, Radford, Nottingham, United Kingdom, GB NG7 1NU

0078676A 5/1983 European Pat. Off. .  
0609021A 8/1994 European Pat. Off. .  
3910977A 10/1990 Germany .

[\*] Notice: This patent is subject to a terminal disclaimer.

*Primary Examiner*—Michael Horabik  
*Assistant Examiner*—Timothy Edwards, Jr.  
*Attorney, Agent, or Firm*—Cahill Sutton & Thomas, P.L.C.

[21] Appl. No.: **09/179,489**

[22] Filed: **Oct. 27, 1998**

[57] **ABSTRACT**

**Related U.S. Application Data**

A touchpad is formed of an electrically insulating membrane (10) with a first series of spaced apart conductors (12) on a first face of membrane (10) and a second series of spaced apart conductors (14) on or proximal thereto, in which there is no electrical contact between the first and second series of conductors (12, 14). Each conductor in the first and second series of conductors is sensitive to the proximity of a finger to modify the capacitance of the proximate conductor to detect the presence of the finger positioned close to that conductor. A scanning system operative to sample one of the conductors in turn from both the first and second series of conductors (12, 14) in order to measure and store a capacitance value associated with that respective conductor. The scanning system is operative to maintain all conductors (12-n, 14-n) at a common potential equal to the potential of the conductor being sampled when the remaining conductors are not actively being sampled by the scanning system.

[63] Continuation of application No. 08/718,356, Oct. 3, 1996, Pat. No. 5,844,506, which is a continuation of application No. PCT/GB95/00767, Apr. 5, 1995.

[30] **Foreign Application Priority Data**

Apr. 5, 1994 [GB] United Kingdom ..... 9406702

[51] **Int. Cl.<sup>7</sup>** ..... **H03K 17/94**

[52] **U.S. Cl.** ..... **341/33; 341/34; 345/173; 345/174**

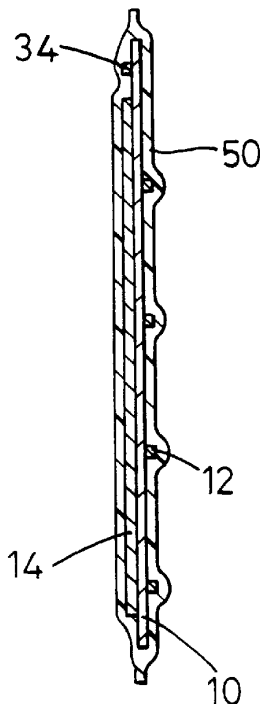
[58] **Field of Search** ..... **341/33, 34, 20; 345/173, 174**

[56] **References Cited**

**U.S. PATENT DOCUMENTS**

4,686,332 8/1987 Greanias et al. .... 178/19

**25 Claims, 9 Drawing Sheets**



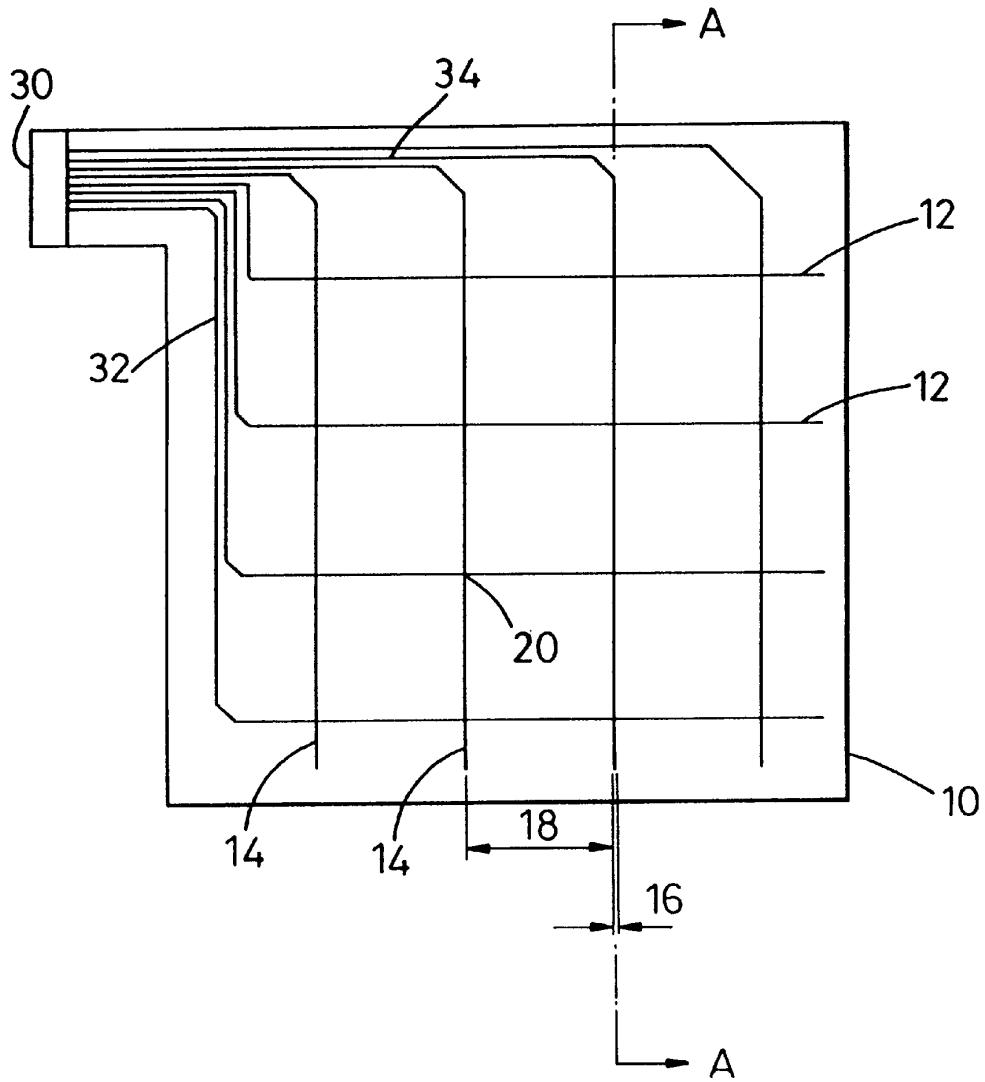


Fig. 1

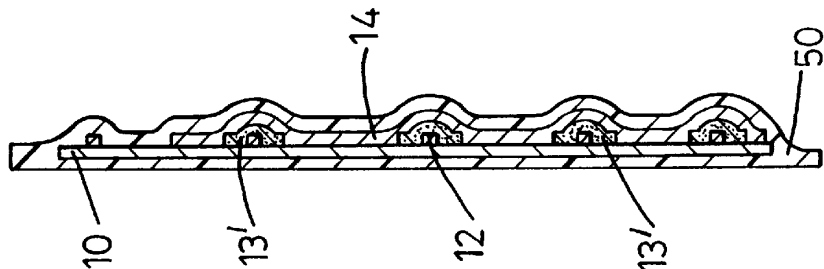


Fig. 2c

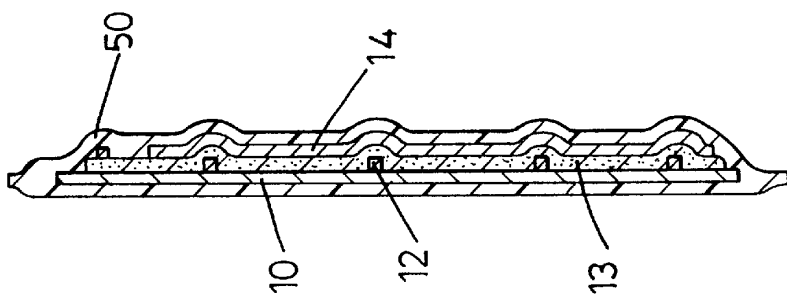


Fig. 2b

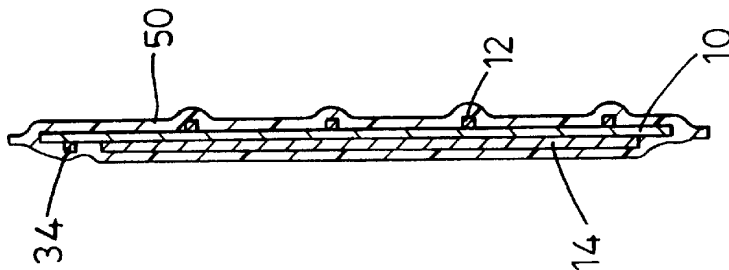


Fig. 2a

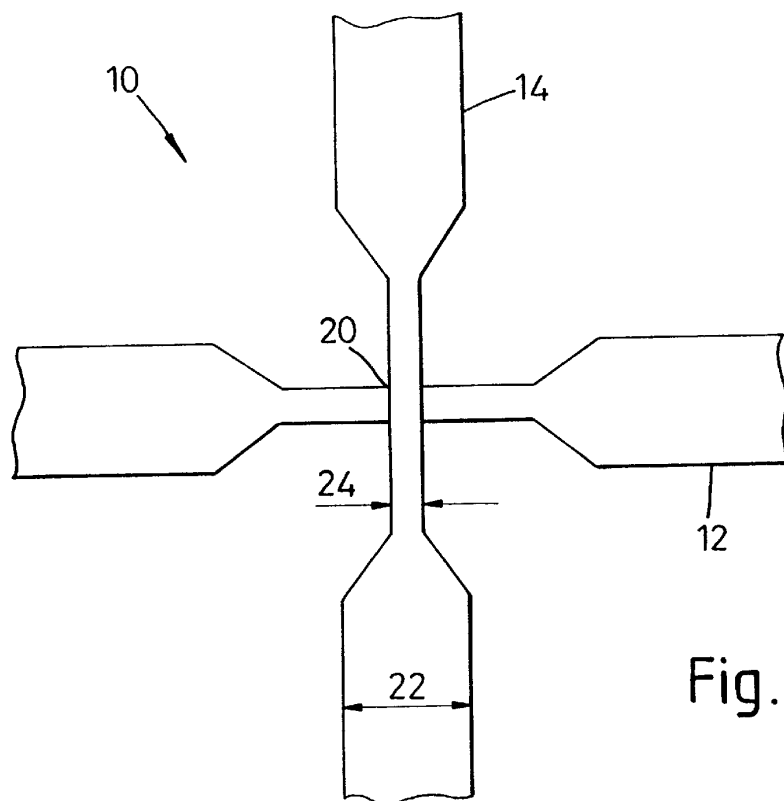


Fig. 3a

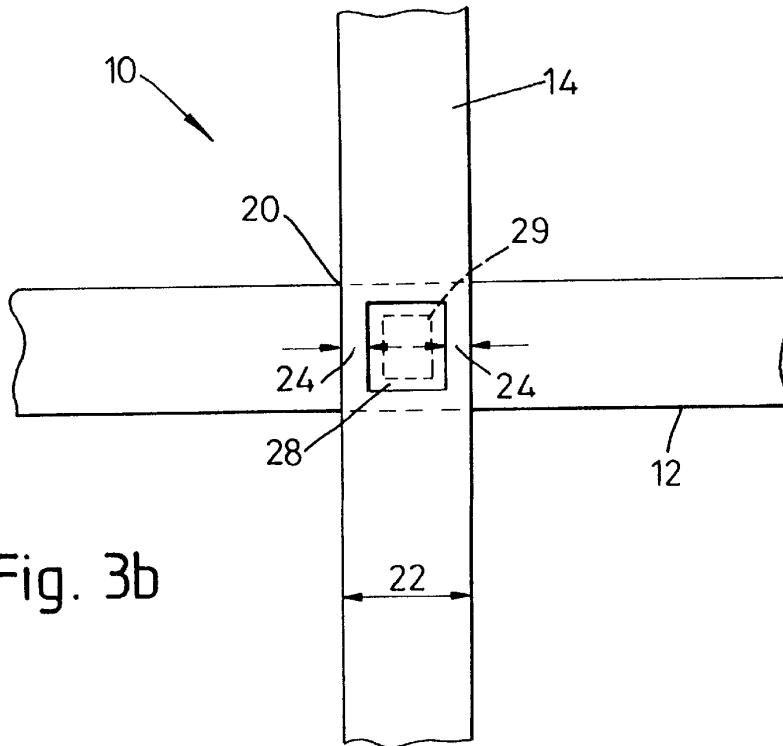
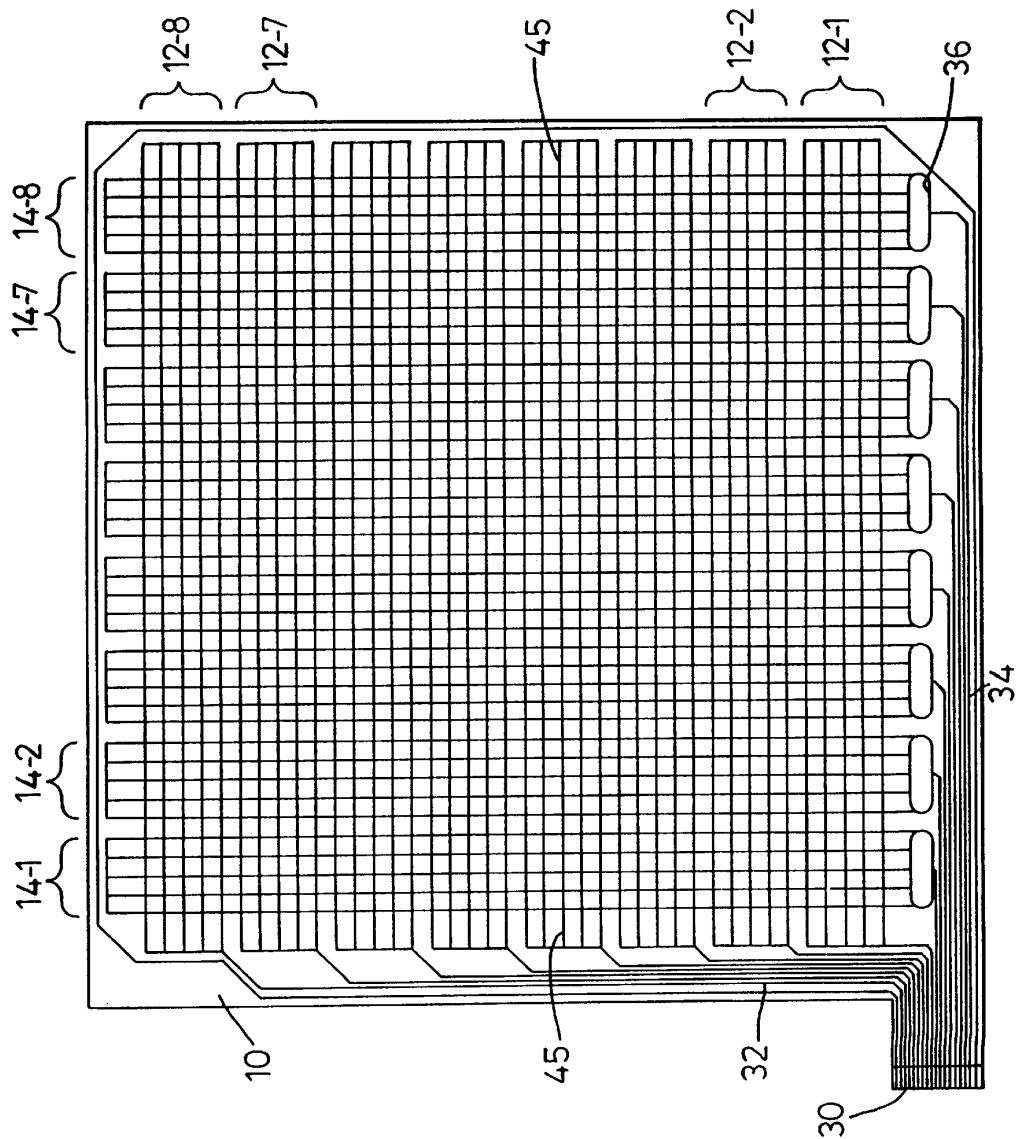


Fig. 3b

Fig. 4



# Explore Litigation Insights

Docket Alarm provides insights to develop a more informed litigation strategy and the peace of mind of knowing you're on top of things.

## Real-Time Litigation Alerts



Keep your litigation team up-to-date with **real-time alerts** and advanced team management tools built for the enterprise, all while greatly reducing PACER spend.

Our comprehensive service means we can handle Federal, State, and Administrative courts across the country.

## Advanced Docket Research



With over 230 million records, Docket Alarm's cloud-native docket research platform finds what other services can't. Coverage includes Federal, State, plus PTAB, TTAB, ITC and NLRB decisions, all in one place.

Identify arguments that have been successful in the past with full text, pinpoint searching. Link to case law cited within any court document via Fastcase.

## Analytics At Your Fingertips



Learn what happened the last time a particular judge, opposing counsel or company faced cases similar to yours.

Advanced out-of-the-box PTAB and TTAB analytics are always at your fingertips.

## API

Docket Alarm offers a powerful API (application programming interface) to developers that want to integrate case filings into their apps.

## LAW FIRMS

Build custom dashboards for your attorneys and clients with live data direct from the court.

Automate many repetitive legal tasks like conflict checks, document management, and marketing.

## FINANCIAL INSTITUTIONS

Litigation and bankruptcy checks for companies and debtors.

## E-DISCOVERY AND LEGAL VENDORS

Sync your system to PACER to automate legal marketing.