



US006153068A

**United States Patent** [19]  
**Ohmi et al.**

[11] **Patent Number:** **6,153,068**  
[45] **Date of Patent:** **Nov. 28, 2000**

[54] **PARALLEL PLATE SPUTTERING DEVICE WITH RF POWERED AUXILIARY ELECTRODES AND APPLIED EXTERNAL MAGNETIC FIELD**

5,316,645 5/1994 Yamagami et al. .... 204/298.06  
5,431,799 7/1995 Mosely et al. .... 204/298.06  
5,800,688 9/1998 Lantsman et al. .... 204/298.11

**FOREIGN PATENT DOCUMENTS**

WO 89/06437 7/1989 Japan ..... H01L 21/31  
6-252059 9/1994 Japan ..... H01L 21/205  
08319564 12/1996 Japan ..... C23C 14/34  
WO 98/01898 1/1998 Japan ..... H01L 21/3065

[75] Inventors: **Tadahiro Ohmi**, 1-17-301, Komegabukuro 2-chome. Aoba-ku, Sendai-shi, Miyagi-ken 980-0813; **Masaki Hirayama**, Miyagi-ken; **Haruyuki Takano**, Miyagi-ken; **Yusuke Hirayama**, Miyagi-ken, all of Japan

*Primary Examiner*—Nam Nguyen  
*Assistant Examiner*—Gregg Cantelmo  
*Attorney, Agent, or Firm*—Randall J. Knuth

[73] Assignee: **Tadahiro Ohmi**, Miyagi-ken, Japan

[21] Appl. No.: **09/035,325**

[22] Filed: **Mar. 5, 1998**

[30] **Foreign Application Priority Data**

Mar. 7, 1997 [JP] Japan ..... 9-070431

[51] **Int. Cl.<sup>7</sup>** ..... **C23C 14/34**

[52] **U.S. Cl.** ..... **204/298.06; 204/298.08; 204/298.14**

[58] **Field of Search** ..... 204/192.12, 298.01, 204/298.02, 298.06, 298.07, 298.08, 298.16, 298.17, 298.19, 298.14

[56] **References Cited**

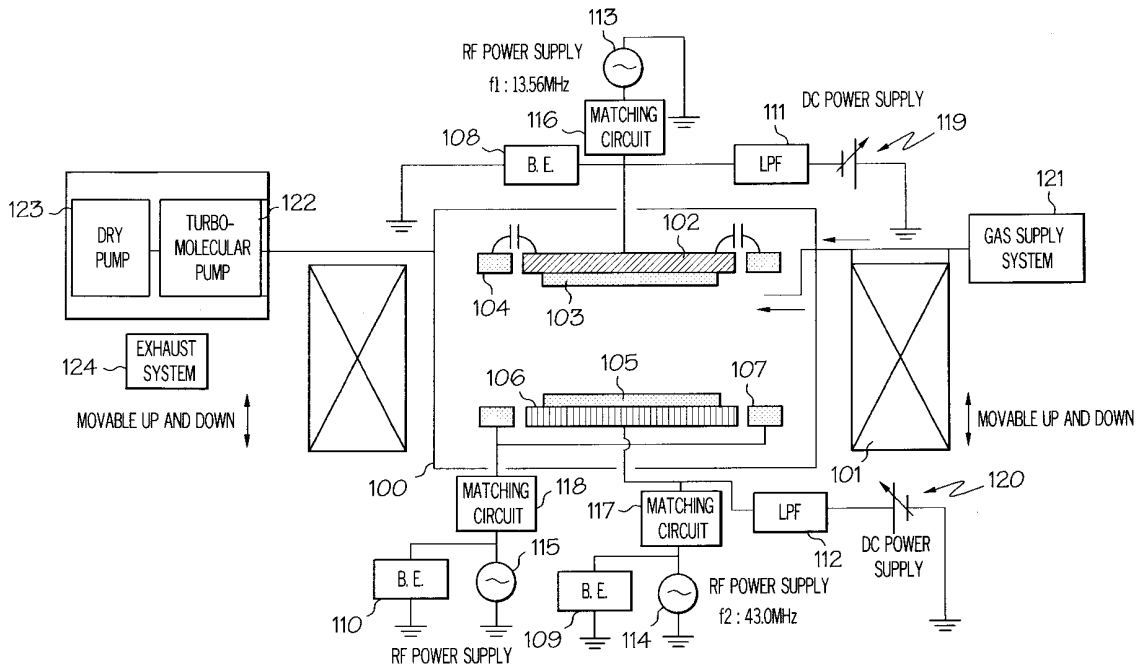
**U.S. PATENT DOCUMENTS**

5,178,739 1/1993 Barnes et al. .... 204/192.12

[57] **ABSTRACT**

The present invention provides a sputtering device provided with two electrodes I and II of parallel plate type within a vessel inside which pressure can be reduced, wherein: a target to be sputtered is placed on said electrode I, and a base body on which a film is to be deposited is placed on said electrode II, with the target and the base body being opposed to each other; a process gas is introduced into said vessel from a gas supply system; radio frequency power is applied to said target through at least said electrode I so as to excite plasma between the electrode I and the electrode II; characterized in that: outside said vessel, is provided a means for introducing magnetic field horizontal at least to a surface to be sputtered of said target.

**2 Claims, 9 Drawing Sheets**



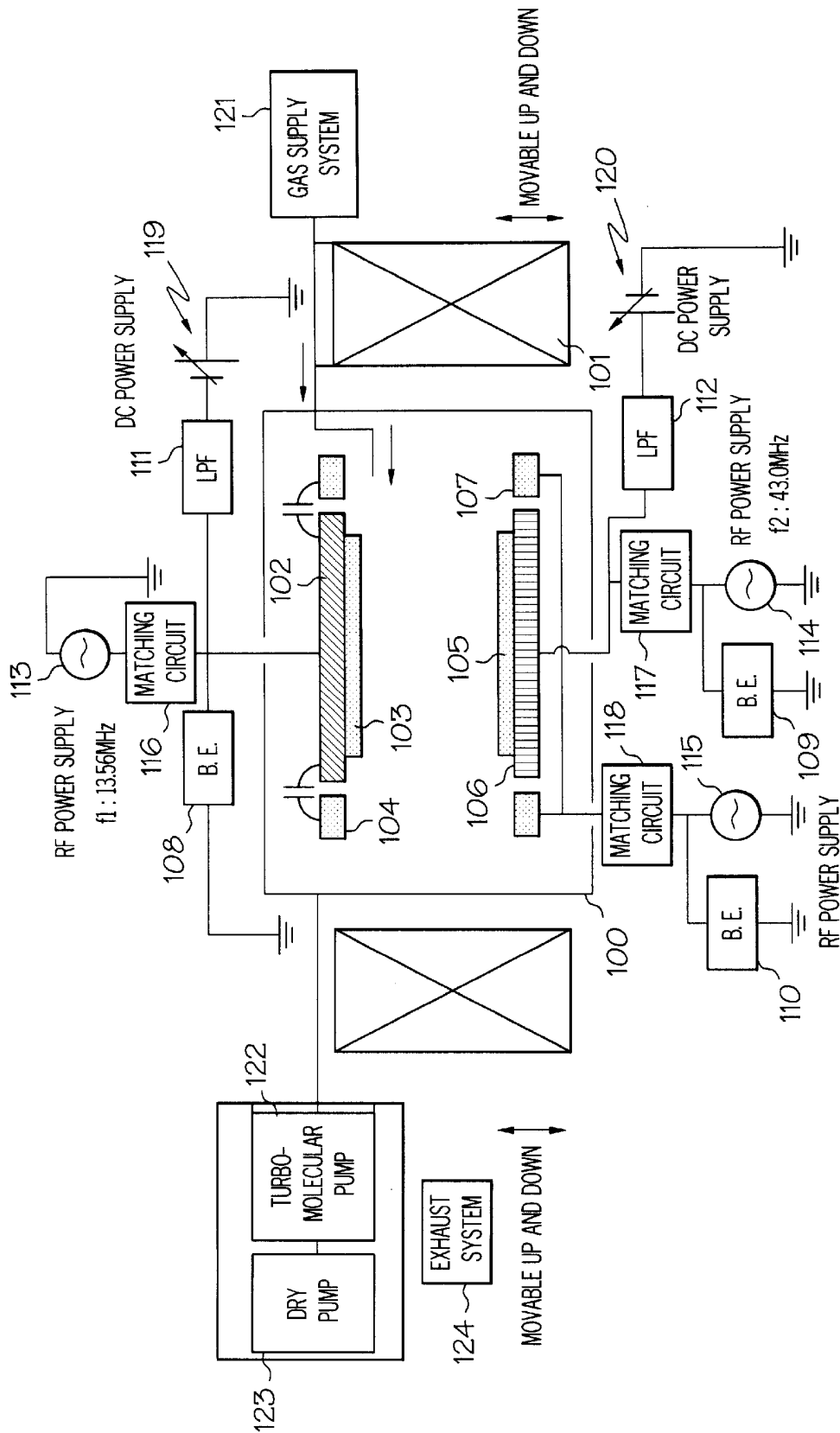


FIG. 1

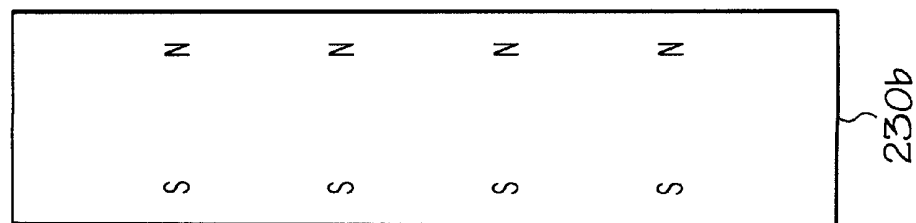
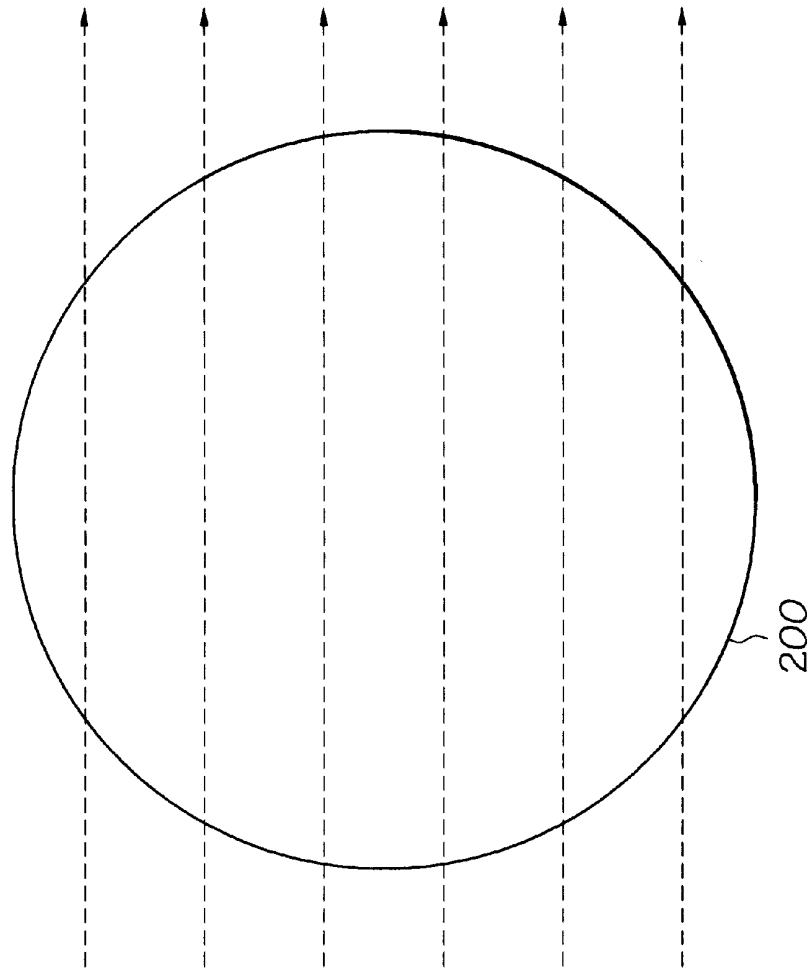
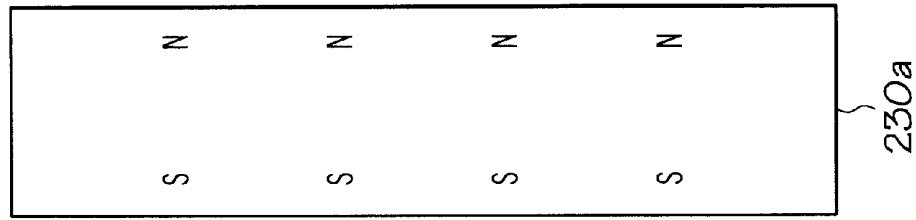


FIG. 2

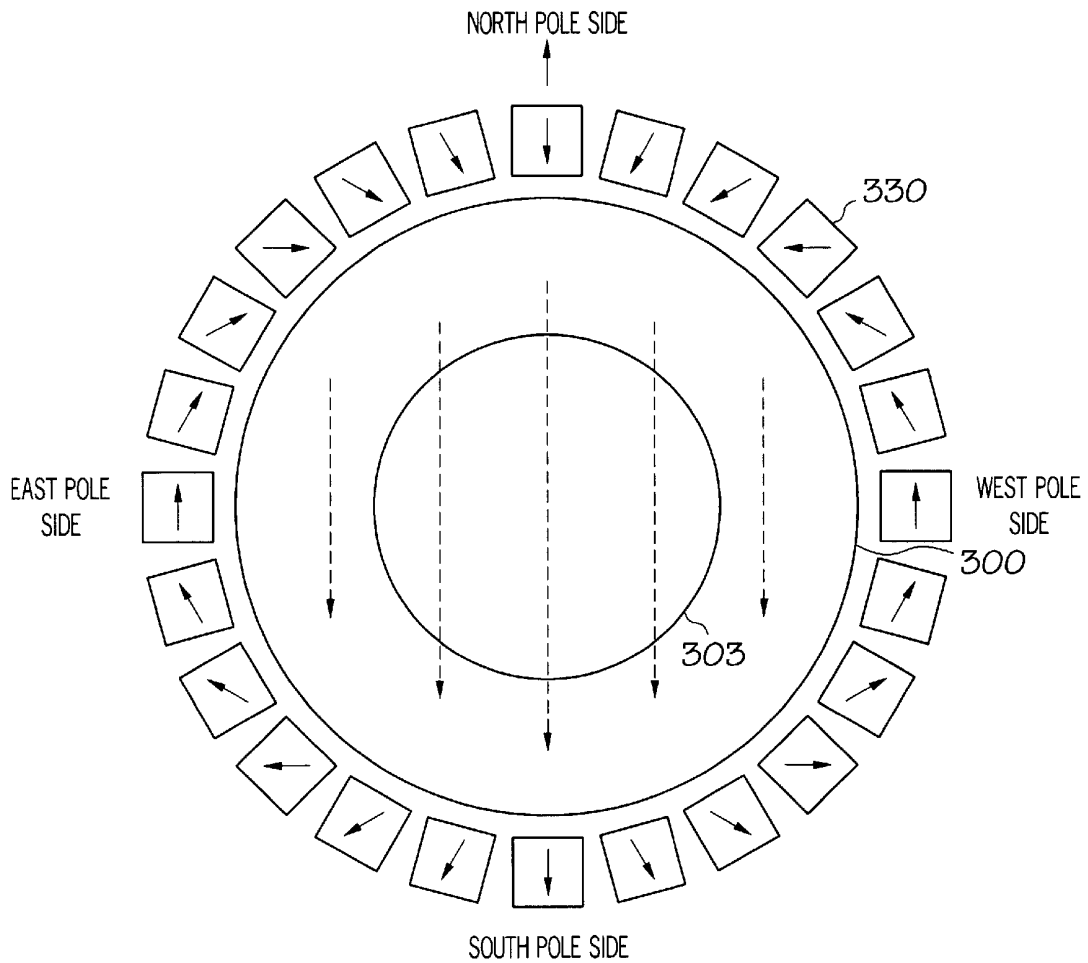


FIG. 3

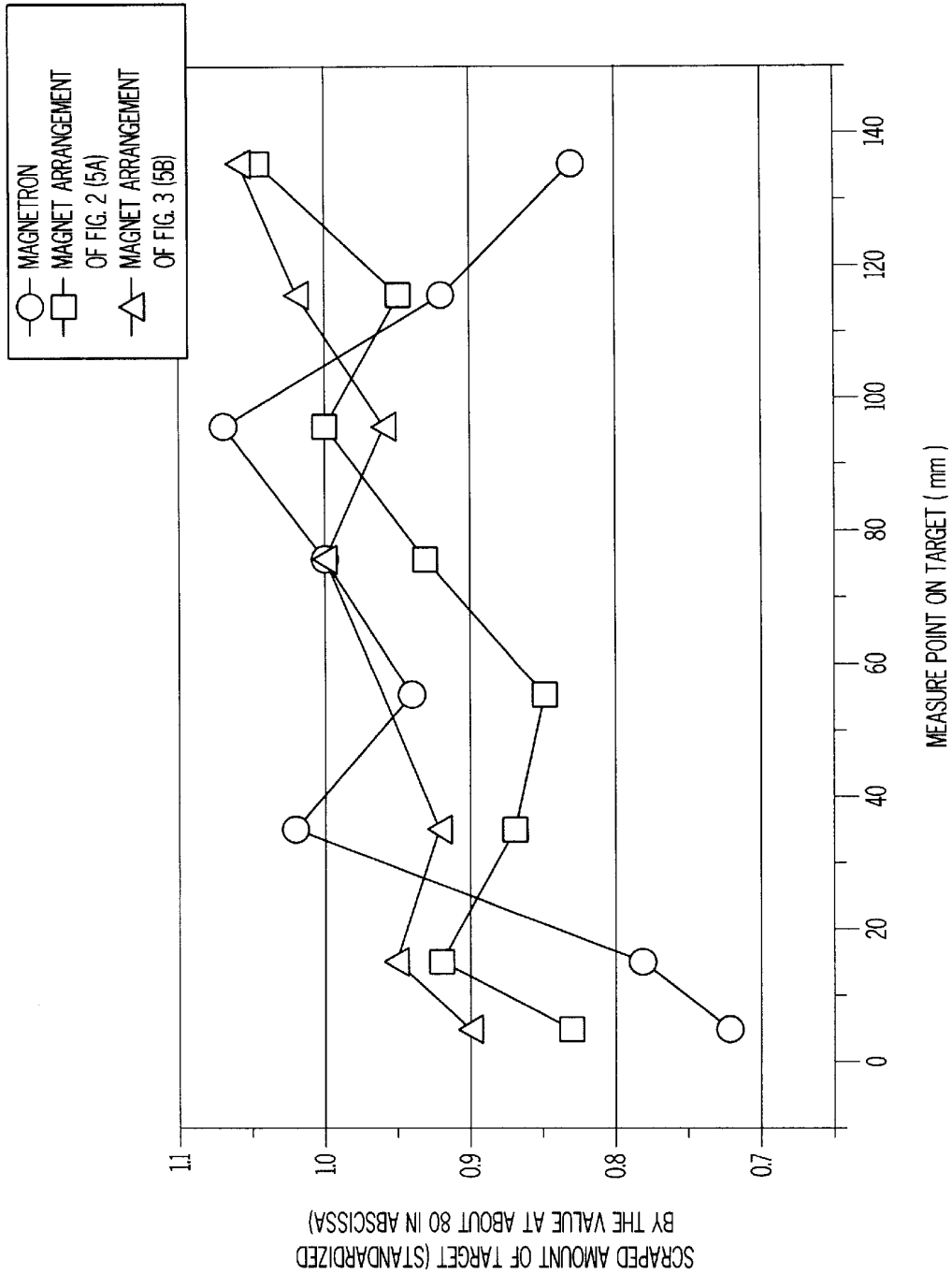


FIG. 4

# Explore Litigation Insights

Docket Alarm provides insights to develop a more informed litigation strategy and the peace of mind of knowing you're on top of things.

## Real-Time Litigation Alerts



Keep your litigation team up-to-date with **real-time alerts** and advanced team management tools built for the enterprise, all while greatly reducing PACER spend.

Our comprehensive service means we can handle Federal, State, and Administrative courts across the country.

## Advanced Docket Research



With over 230 million records, Docket Alarm's cloud-native docket research platform finds what other services can't. Coverage includes Federal, State, plus PTAB, TTAB, ITC and NLRB decisions, all in one place.

Identify arguments that have been successful in the past with full text, pinpoint searching. Link to case law cited within any court document via Fastcase.

## Analytics At Your Fingertips



Learn what happened the last time a particular judge, opposing counsel or company faced cases similar to yours.

Advanced out-of-the-box PTAB and TTAB analytics are always at your fingertips.

## API

Docket Alarm offers a powerful API (application programming interface) to developers that want to integrate case filings into their apps.

## LAW FIRMS

Build custom dashboards for your attorneys and clients with live data direct from the court.

Automate many repetitive legal tasks like conflict checks, document management, and marketing.

## FINANCIAL INSTITUTIONS

Litigation and bankruptcy checks for companies and debtors.

## E-DISCOVERY AND LEGAL VENDORS

Sync your system to PACER to automate legal marketing.