



United States Patent [19]

[11] **Patent Number:** 5,546,475

Bolle et al.

[45] **Date of Patent:** Aug. 13, 1996

[54] **PRODUCE RECOGNITION SYSTEM**

[75] Inventors: **Rudolf M. Bolle**, Bedford Hills; **Jonathan H. Connell**, Cortlandt-Manor; **Norman Haas**, Mount Kisco, all of N.Y.; **Rakesh Mohan**, Stamford, Conn.; **Gabriel Taubin**, Hartsdale, N.Y.

[73] Assignee: **International Business Machines Corporation**, Armonk, N.Y.

[21] Appl. No.: **235,834**

[22] Filed: **Apr. 29, 1994**

[51] Int. Cl.⁶ **G06K 9/46; G06K 9/66**

[52] U.S. Cl. **382/190; 382/110; 382/164; 382/165; 382/170; 382/173**

[58] Field of Search **382/110, 164, 382/165, 170, 173, 190, 199, 181**

[56] **References Cited**

U.S. PATENT DOCUMENTS

3,770,111	11/1973	Greenwood et al.	250/227
4,106,628	8/1978	Warkentin et al.	209/74
4,515,275	5/1985	Mills et al.	209/585
4,534,470	8/1985	Mills	209/558
4,574,393	3/1986	Blackwell et al.	364/526
4,718,089	1/1988	Hayashi et al.	382/191
4,735,323	5/1988	Okada et al.	209/582
5,020,675	6/1991	Cowlin et al.	209/538
5,060,290	10/1991	Kelly et al.	382/110
5,085,325	2/1992	Jones et al.	209/580
5,164,795	11/1992	Conway	356/407
5,253,302	10/1993	Massen	382/165

FOREIGN PATENT DOCUMENTS

3044268	2/1991	Japan
5063968	3/1993	Japan

OTHER PUBLICATIONS

M. J. Swain & D. H. Ballard, "Color Indexing," Int. Journal of Computer Vision, vol. 7, No. 1, pp. 11-32, 1991.
M. Miyahara & Y. Yoshida, "Mathematical Transform of (R,G,B) color data to Munsell (H,V,C,) color data," SPIE vol. 1001 Visual Communications and Image Processing, 1988, pp. 650-657.

L. vanGool, P. Dewaele, & A. Oosterlinck, "Texture Analysis anno 1983," Computer Vision, Graphics, and Image Processing, vol. 29, 1985, pp. 336-357.

T. Pavlidis, "A Review of Algorithms for Shape Analysis," Computer Graphics and Image Processing vol. 7, 1978, pp. 243-258.

S. Marshall, "Review of Shape Coding Techniques," Image and Vision Computing, vol. 7, No. 4, Nov. 1989, pp. 281-294.

S. Mersch, "Polarized Lighting for Machine Vision Applications," Proc. of RI/SME Third Annual Applied Machine Vision Cof., Feb. 1984, pp. 40-54 Schaumburg.

B. G. Batchelor, D. A. Hill & D. C. Hodgson, "Automated Visual Inspection" IFS (Publications) Ltd. UK North-Holland (A div. of Elsevier Science Publishers BV) 1985 pp. 39-178.

Primary Examiner—Leo Boudreau
Assistant Examiner—Phuoc Tran
Attorney, Agent, or Firm—Louis J. Percello

[57] **ABSTRACT**

The present system and apparatus uses image processing to recognize objects within a scene. The system includes an illumination source for illuminating the scene. By controlling the illumination source, an image processing system can take a first digitize image of the scene with the object illuminated a higher level and a second digitized image with the object illuminated at a lower level. Using an algorithm, the object(s) image is segmented from a background image of the scene by a comparison of the two digitized images taken. A processed image (that can be used to characterize features) of the object(s) is then compared to stored reference images. The object is recognized when a match occurs. The system can recognize objects independent of size and number and can be trained to recognize objects that is was not originally programmed to recognize.

32 Claims, 16 Drawing Sheets

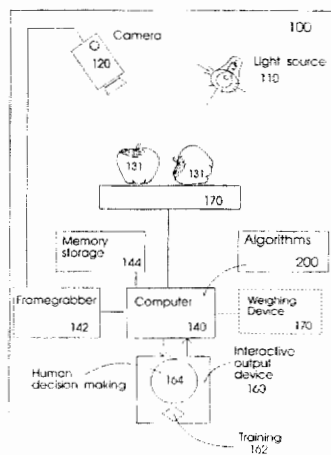


FIG. 1

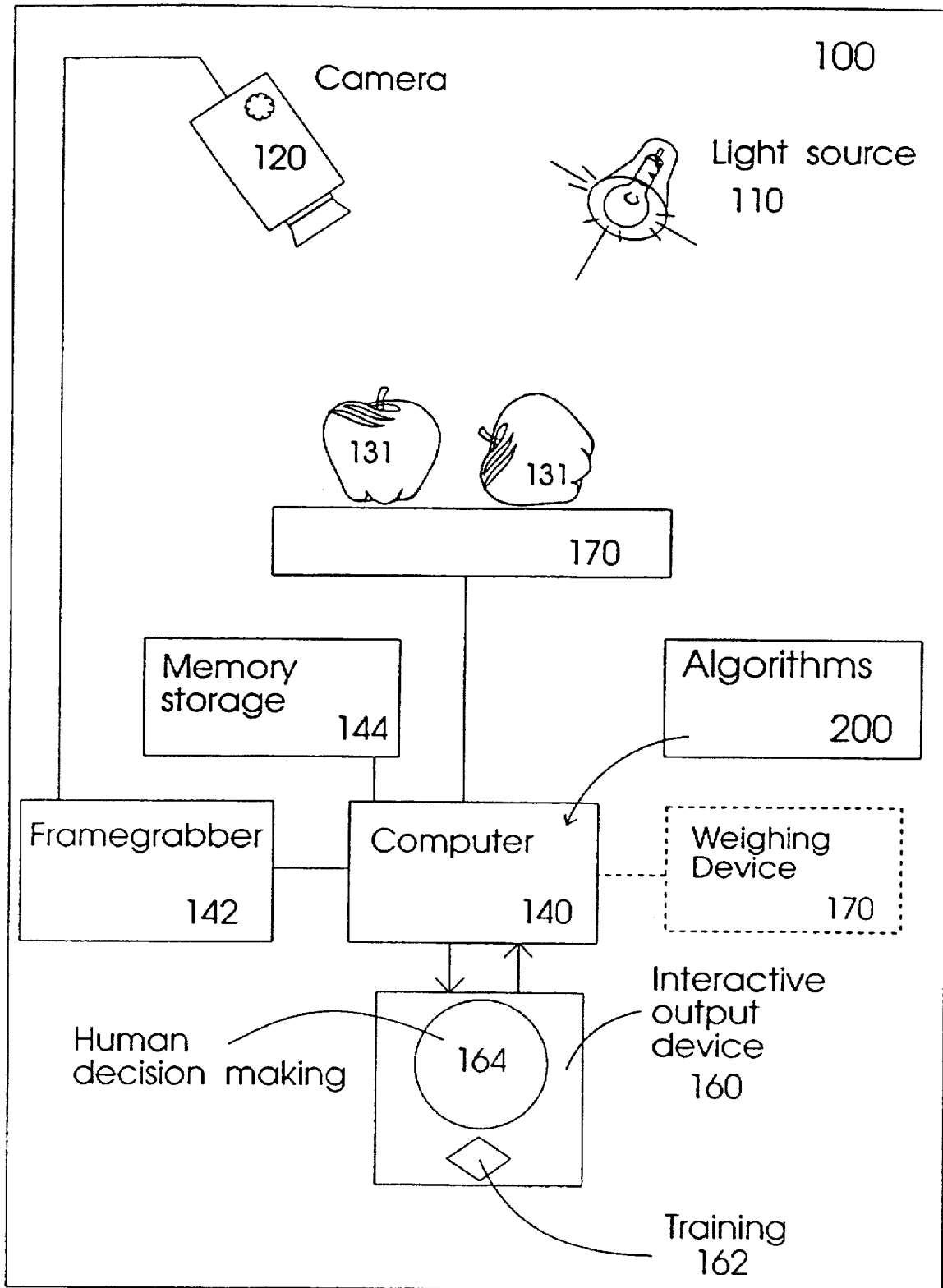


FIG. 2

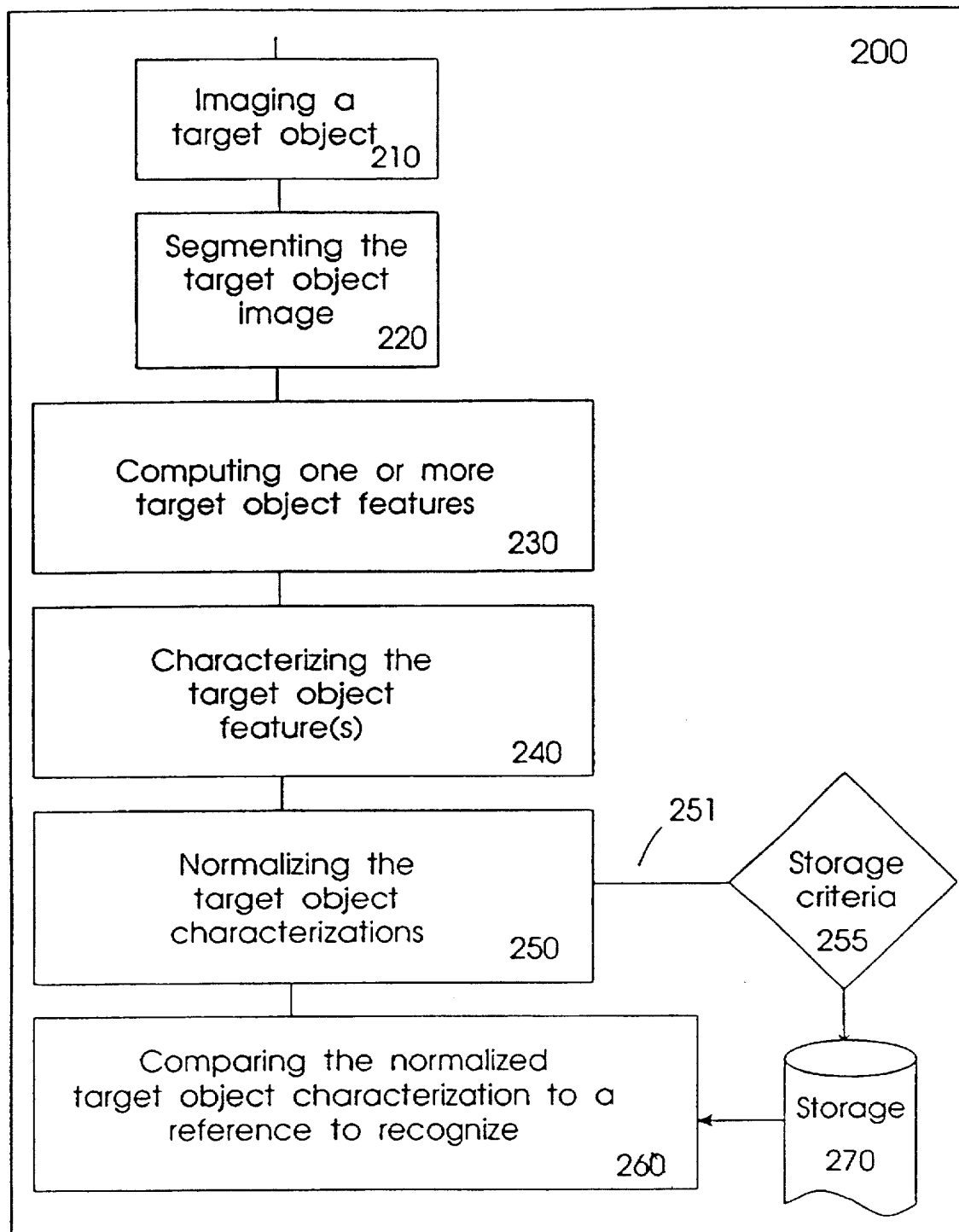


FIG. 3a

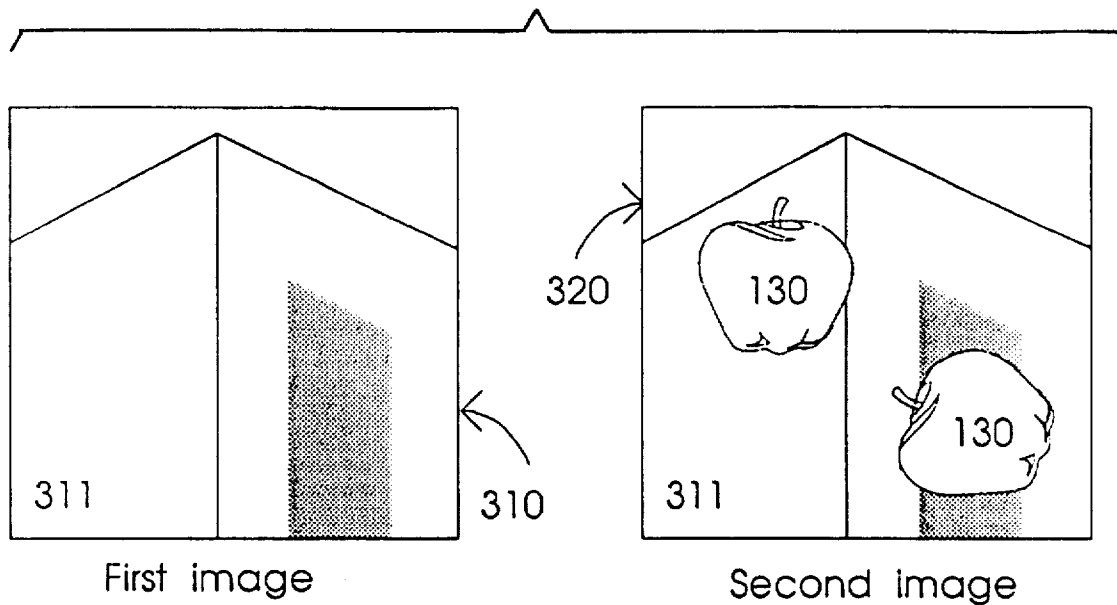


FIG. 3b

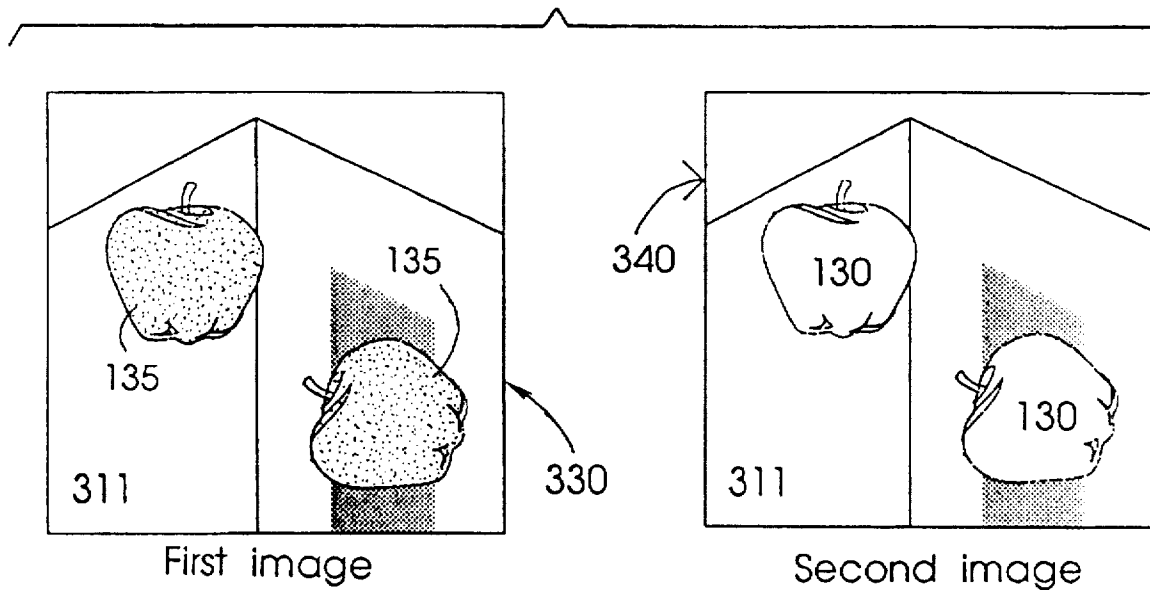
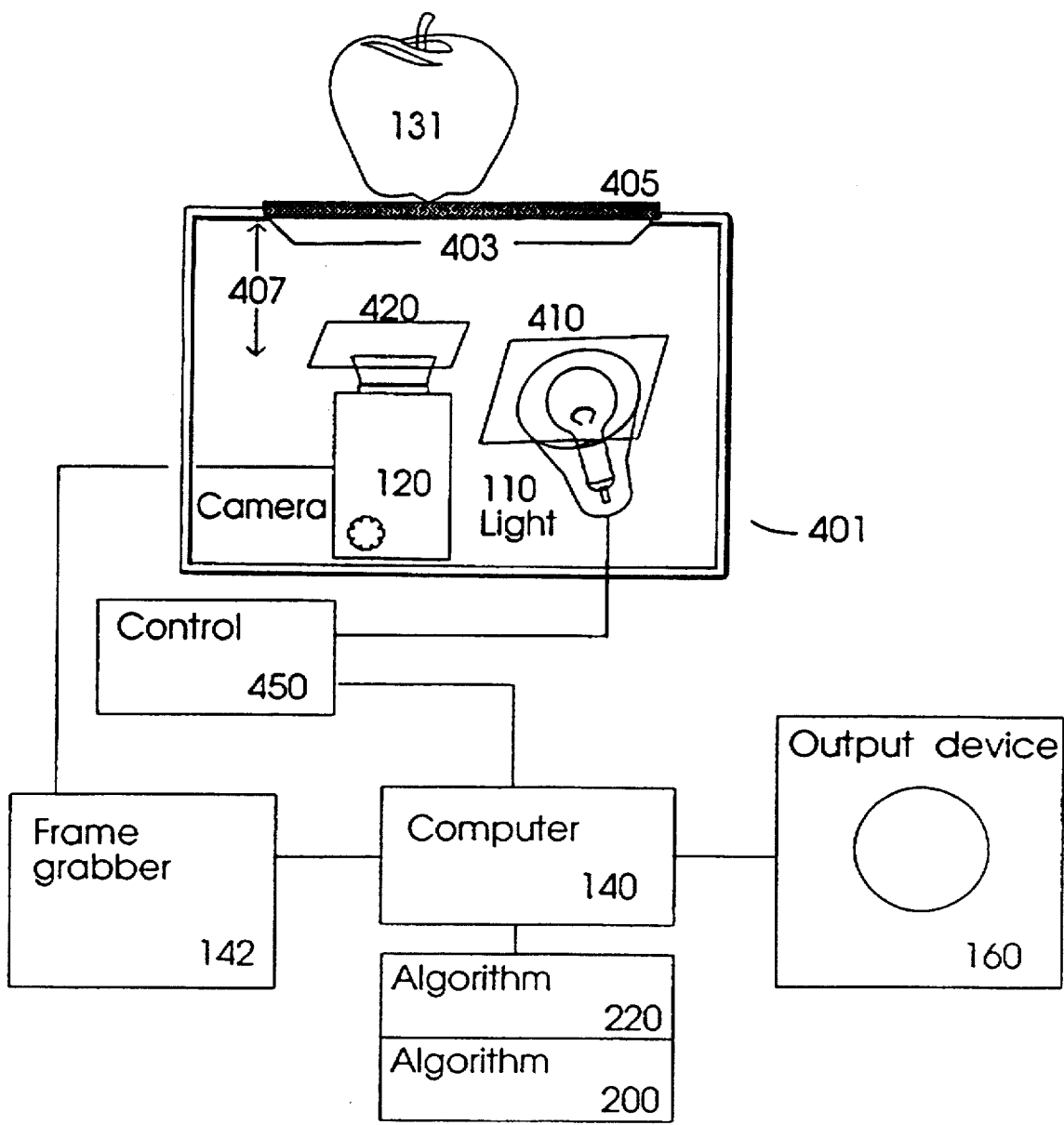


FIG. 4

Background 312



400

Explore Litigation Insights

Docket Alarm provides insights to develop a more informed litigation strategy and the peace of mind of knowing you're on top of things.

Real-Time Litigation Alerts



Keep your litigation team up-to-date with **real-time alerts** and advanced team management tools built for the enterprise, all while greatly reducing PACER spend.

Our comprehensive service means we can handle Federal, State, and Administrative courts across the country.

Advanced Docket Research



With over 230 million records, Docket Alarm's cloud-native docket research platform finds what other services can't. Coverage includes Federal, State, plus PTAB, TTAB, ITC and NLRB decisions, all in one place.

Identify arguments that have been successful in the past with full text, pinpoint searching. Link to case law cited within any court document via Fastcase.

Analytics At Your Fingertips



Learn what happened the last time a particular judge, opposing counsel or company faced cases similar to yours.

Advanced out-of-the-box PTAB and TTAB analytics are always at your fingertips.

API

Docket Alarm offers a powerful API (application programming interface) to developers that want to integrate case filings into their apps.

LAW FIRMS

Build custom dashboards for your attorneys and clients with live data direct from the court.

Automate many repetitive legal tasks like conflict checks, document management, and marketing.

FINANCIAL INSTITUTIONS

Litigation and bankruptcy checks for companies and debtors.

E-DISCOVERY AND LEGAL VENDORS

Sync your system to PACER to automate legal marketing.