



US 20060203157A1

(19) **United States**

(12) **Patent Application Publication**
Ozawa et al.

(10) **Pub. No.: US 2006/0203157 A1**

(43) **Pub. Date: Sep. 14, 2006**

(54) **LIQUID CRYSTAL DISPLAY AND ELECTRONIC DEVICE**

(30) **Foreign Application Priority Data**

(75) Inventors: **Kinya Ozawa**, Suwa-shi (JP);
Nobutaka Urano, Chino-shi (JP);
Tsuyoshi Maeda, Fujimi-machi (JP)

Jan. 29, 2002 (JP) 2002-019876

Dec. 20, 2002 (JP) 2002-369975

Correspondence Address:
OLIFF & BERRIDGE, PLC
P.O. BOX 19928
ALEXANDRIA, VA 22320 (US)

Publication Classification

(51) **Int. Cl.**
G02F 1/1335 (2006.01)

(52) **U.S. Cl.** **349/114**

(57) **ABSTRACT**

(73) Assignee: **Seiko Epson Corporation**, Tokyo (JP)

The invention provides a liquid crystal display capable of obtaining light and high-contrast display having a wide viewing angle in a transmissive liquid crystal display. A liquid crystal display of the present invention employs a vertical alignment mode using a liquid crystal layer that is vertically aligned in the initial alignment state. A transparent display area is disposed to surround the periphery of a reflective display area in one dot, and an insulating film is provided in the area that corresponds to the reflective display area in the center of the dot. The insulating film makes the thickness of the liquid crystal layer in the reflective display area to be smaller than the thickness of the liquid crystal layer in the transparent display area.

(21) Appl. No.: **11/434,762**

(22) Filed: **May 17, 2006**

Related U.S. Application Data

(62) Division of application No. 10/927,076, filed on Aug. 27, 2004, which is a division of application No. 10/352,199, filed on Jan. 28, 2003.

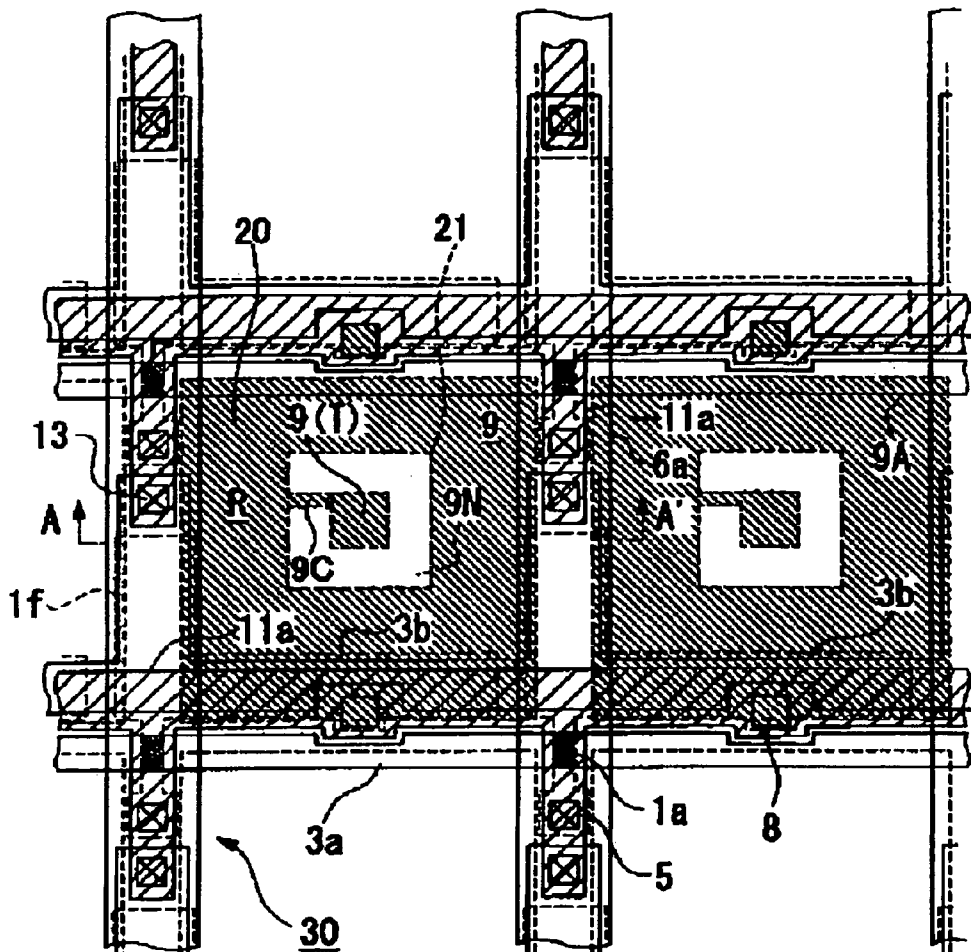


FIG. 1

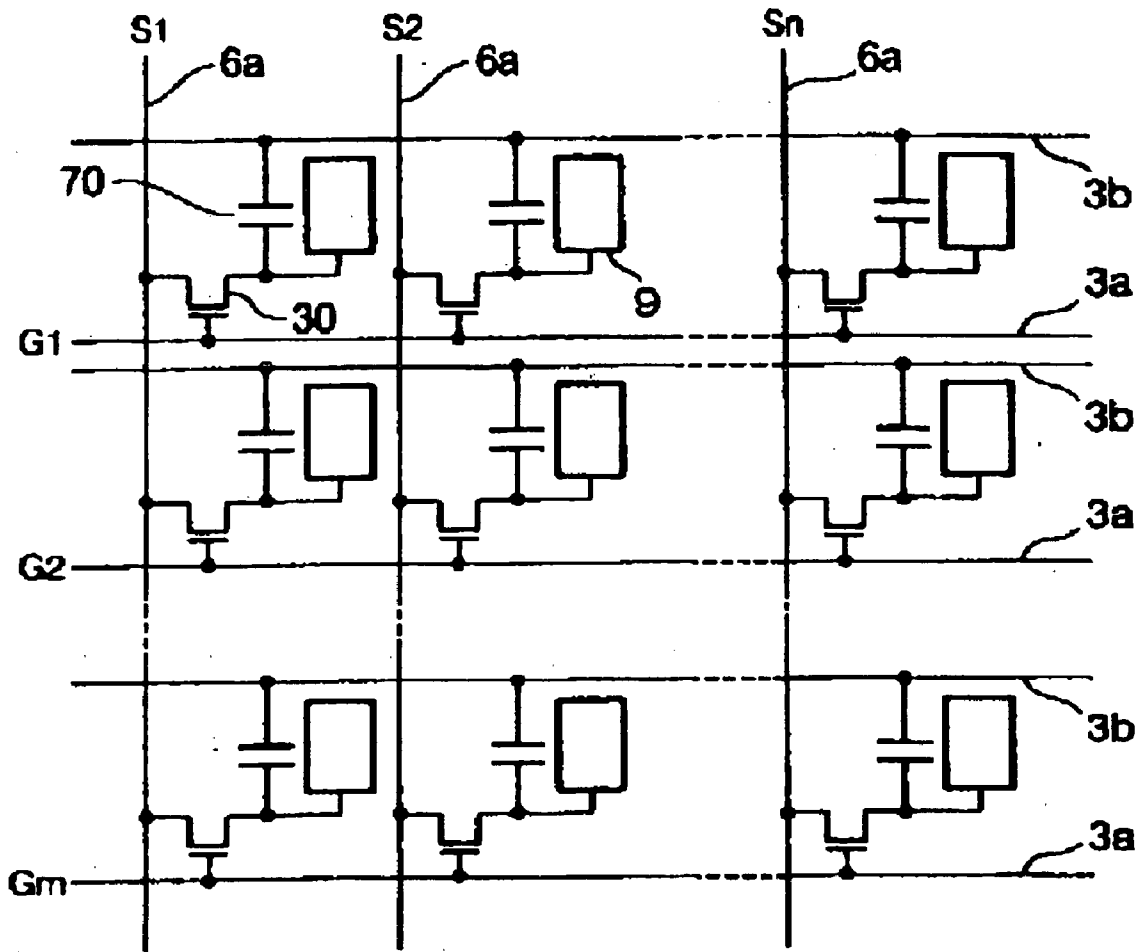


FIG. 2

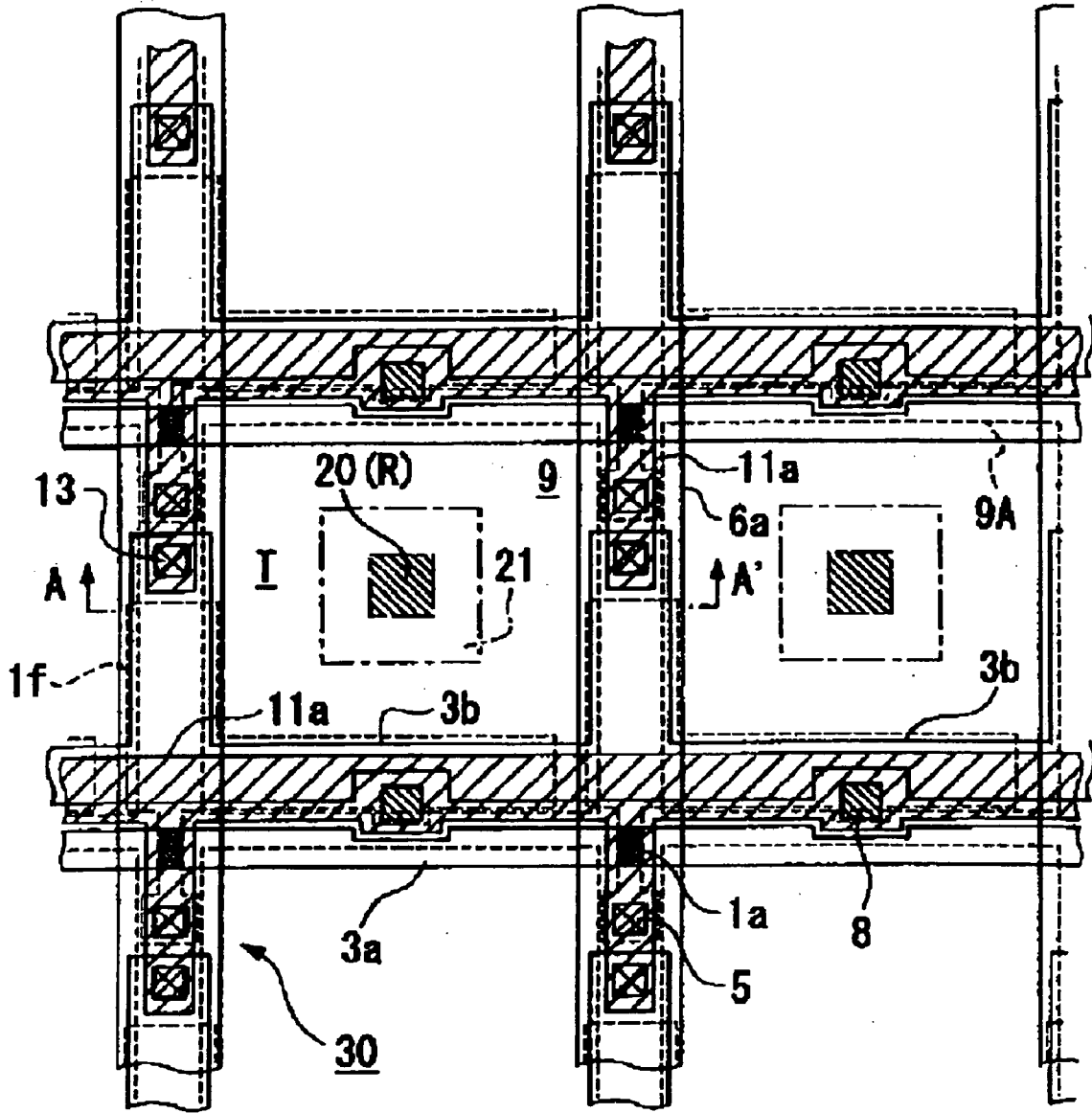


FIG. 3

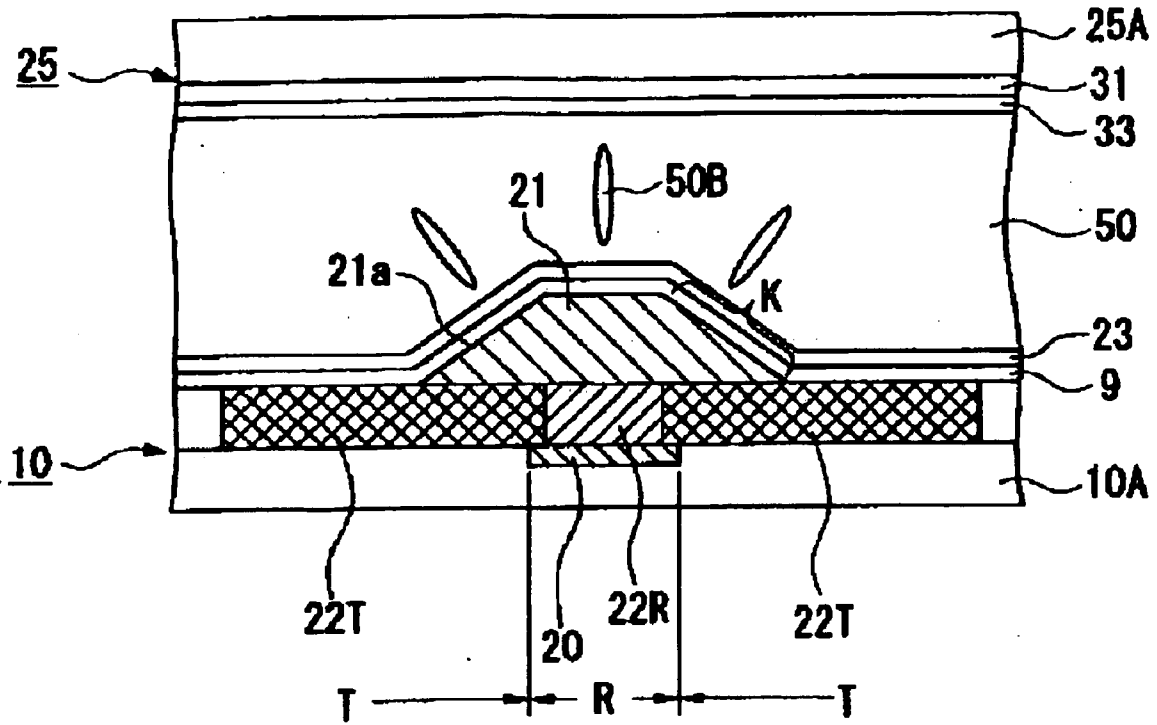
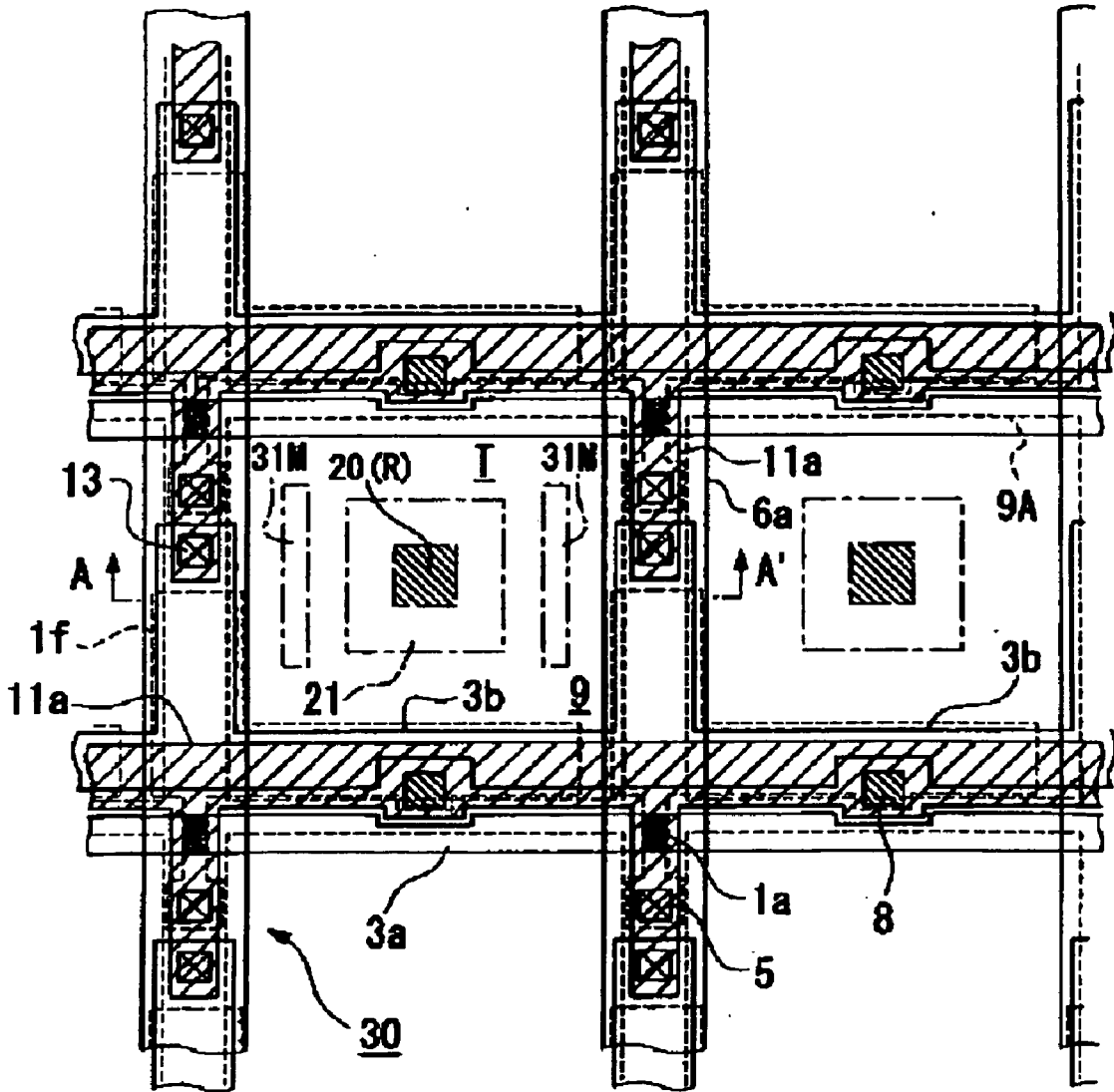


FIG. 4



Explore Litigation Insights

Docket Alarm provides insights to develop a more informed litigation strategy and the peace of mind of knowing you're on top of things.

Real-Time Litigation Alerts



Keep your litigation team up-to-date with **real-time alerts** and advanced team management tools built for the enterprise, all while greatly reducing PACER spend.

Our comprehensive service means we can handle Federal, State, and Administrative courts across the country.

Advanced Docket Research



With over 230 million records, Docket Alarm's cloud-native docket research platform finds what other services can't. Coverage includes Federal, State, plus PTAB, TTAB, ITC and NLRB decisions, all in one place.

Identify arguments that have been successful in the past with full text, pinpoint searching. Link to case law cited within any court document via Fastcase.

Analytics At Your Fingertips



Learn what happened the last time a particular judge, opposing counsel or company faced cases similar to yours.

Advanced out-of-the-box PTAB and TTAB analytics are always at your fingertips.

API

Docket Alarm offers a powerful API (application programming interface) to developers that want to integrate case filings into their apps.

LAW FIRMS

Build custom dashboards for your attorneys and clients with live data direct from the court.

Automate many repetitive legal tasks like conflict checks, document management, and marketing.

FINANCIAL INSTITUTIONS

Litigation and bankruptcy checks for companies and debtors.

E-DISCOVERY AND LEGAL VENDORS

Sync your system to PACER to automate legal marketing.