



US006680933B1

(12) **United States Patent**
Cheesman et al.

(10) **Patent No.:** **US 6,680,933 B1**
(45) **Date of Patent:** **Jan. 20, 2004**

(54) **TELECOMMUNICATIONS SWITCHES AND METHODS FOR THEIR OPERATION**

6,452,915 B1 * 9/2002 Jorgensen 370/338
6,526,056 B1 * 2/2003 Rekhter et al. 370/392
2002/0097725 A1 * 7/2002 Dighe et al. 370/395.1

(75) Inventors: **Julian J. Cheesman**, Kanata (CA);
Norman A. Lyon, Hull (CA); **Stacy S. Nichols**, Kanata (CA)

FOREIGN PATENT DOCUMENTS

EP 0 901 307 A 3/1999

(73) Assignee: **Nortel Networks Limited**, St. Laurent (CA)

* cited by examiner

(*) Notice: Subject to any disclaimer, the term of this patent is extended or adjusted under 35 U.S.C. 154(b) by 0 days.

Primary Examiner—Dang Ton
Assistant Examiner—Ronald Abelson
(74) *Attorney, Agent, or Firm*—Jean-Pierre Fortin

(57) **ABSTRACT**

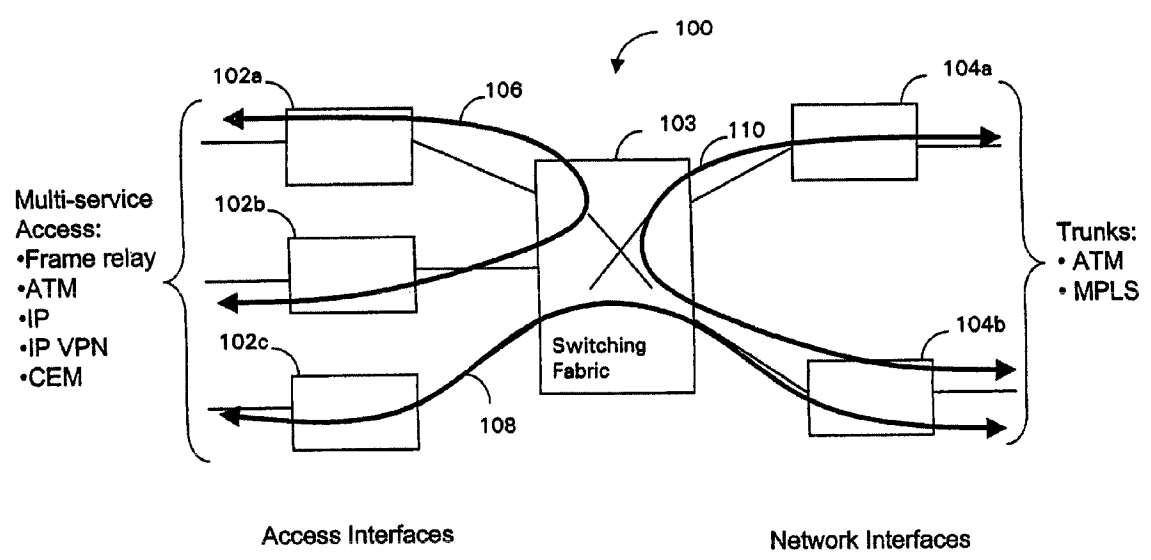
(21) Appl. No.: **09/401,955**
(22) Filed: **Sep. 23, 1999**
(51) **Int. Cl.**⁷ **H04L 12/66**; H04L 12/28; H04L 12/96
(52) **U.S. Cl.** **370/352**; 370/389; 370/395.21; 370/395.4; 370/395.43; 370/395.52; 370/392
(58) **Field of Search** 370/352, 389, 370/395.21, 395.4–395.43, 395.52, 392, 412–414, 229–230, 474–475, 466–468, 397–399, 395.72, 415–418, 428–429

A telecommunications switch for switching protocol data units across communications links connecting the switch into a communications network and supporting multiple service types concurrently is disclosed. The switch includes an ingress processor for receiving protocol data units from a communications link, an egress processor for transmitting protocol data units onto another communications link, and a switching fabric for routing protocol data units from the ingress processor to the egress processor. The switch includes a structure of queues and schedulers that is arranged to provide concurrent class-based and flow-based queuing and scheduling of the protocol data units. This arrangement allows an amount of switching bandwidth to be guaranteed to protocol data units belonging to a given flow and allows classes of service within the flow to be allocated a relative proportion of that bandwidth. The structure is re-configurable in its interconnection of queues and schedulers via a link list in which pointers to the queues and schedulers are stored and updated as required.

(56) **References Cited**
U.S. PATENT DOCUMENTS

5,831,980 A 11/1998 Varma et al.
5,850,399 A 12/1998 Ganmukhi et al.
6,084,879 A * 7/2000 Berl et al. 370/389
6,097,722 A * 8/2000 Graham et al. 370/395.21
6,115,373 A * 9/2000 Lea 370/355
6,330,614 B1 * 12/2001 Aggarwal et al. 709/236

19 Claims, 8 Drawing Sheets



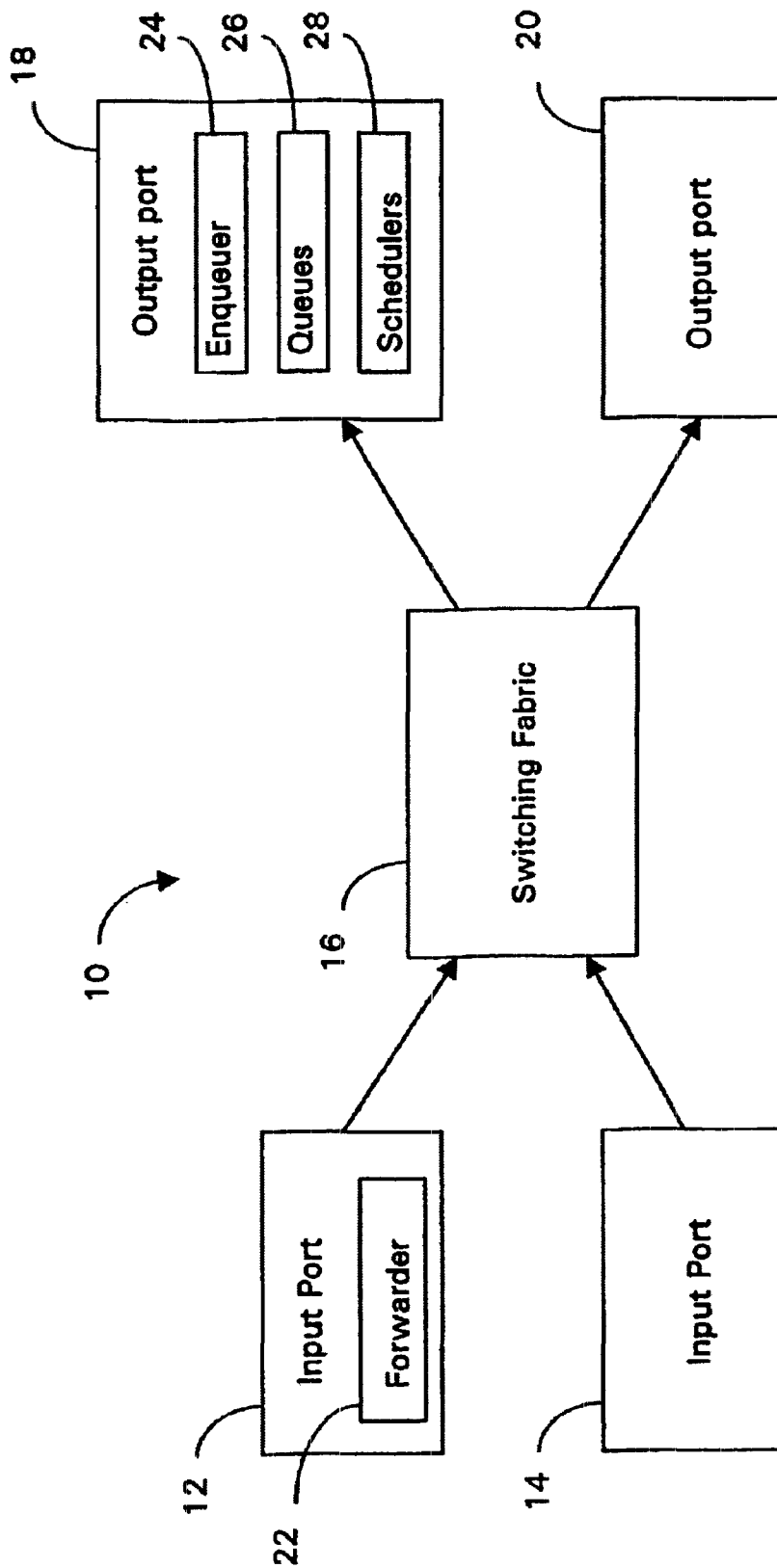


FIG. 1 Prior Art

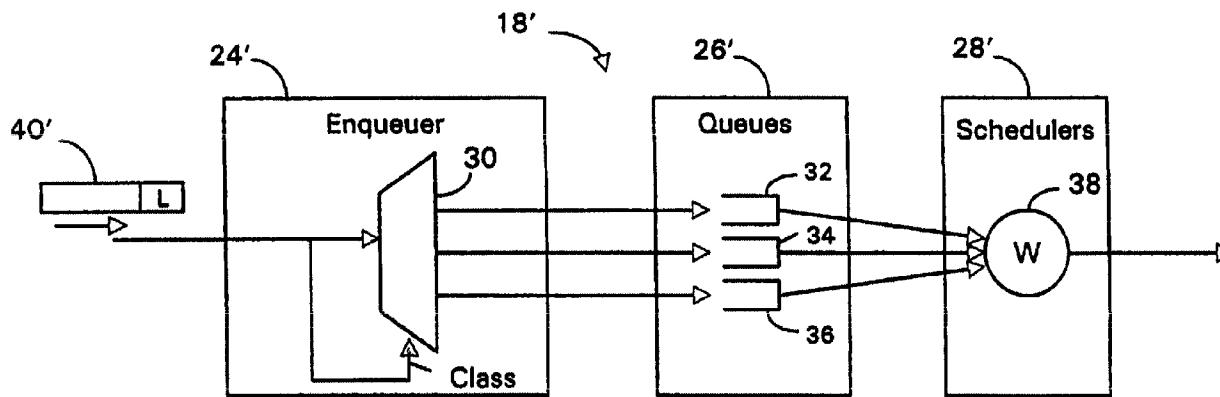


FIG. 2 Prior Art

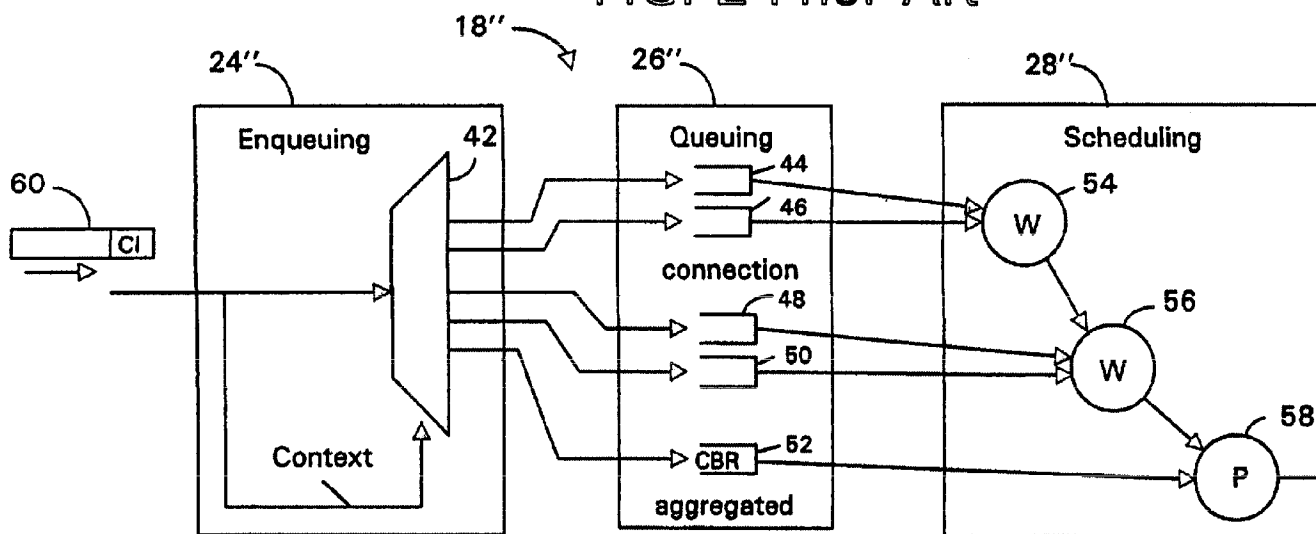


FIG. 3 Prior Art

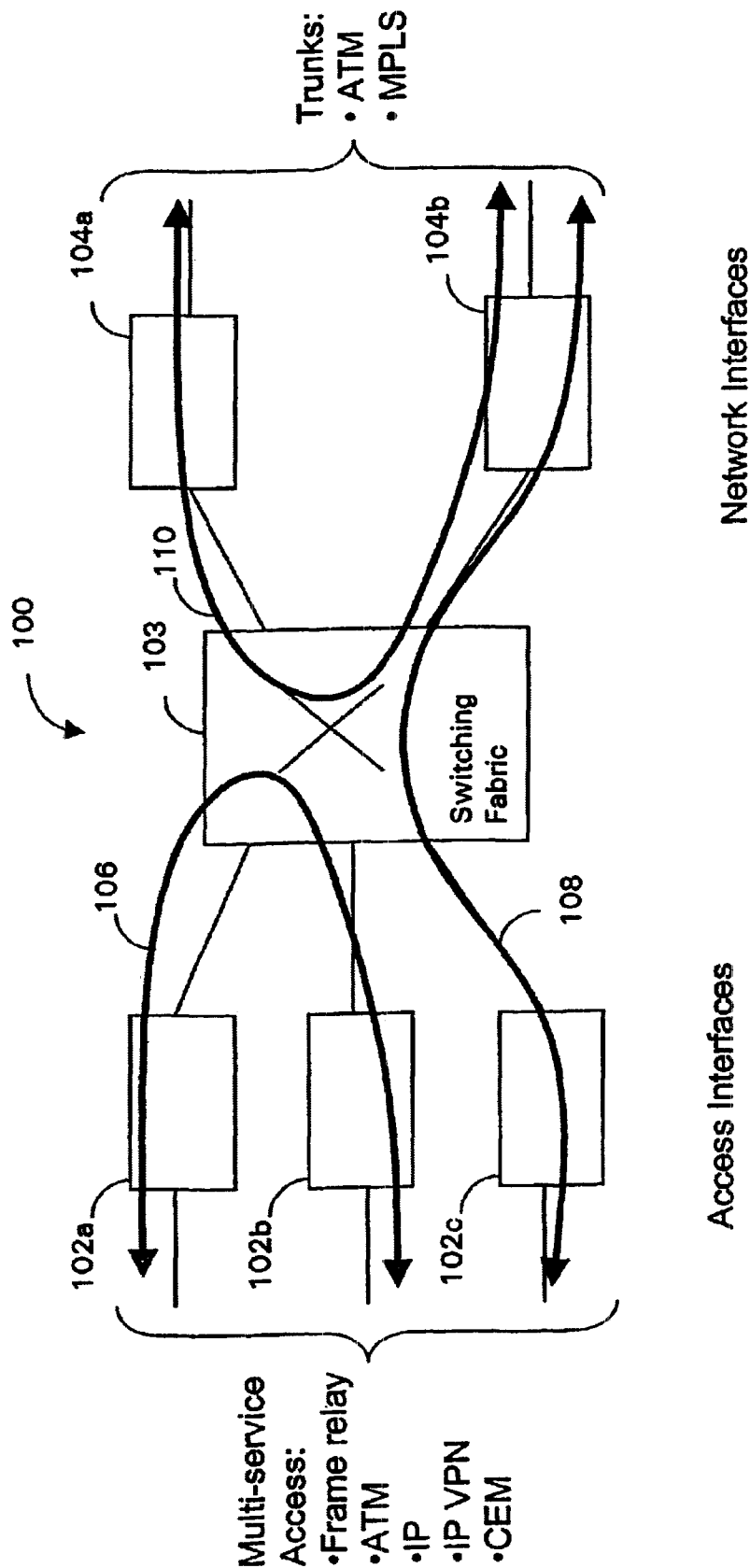


FIG. 4

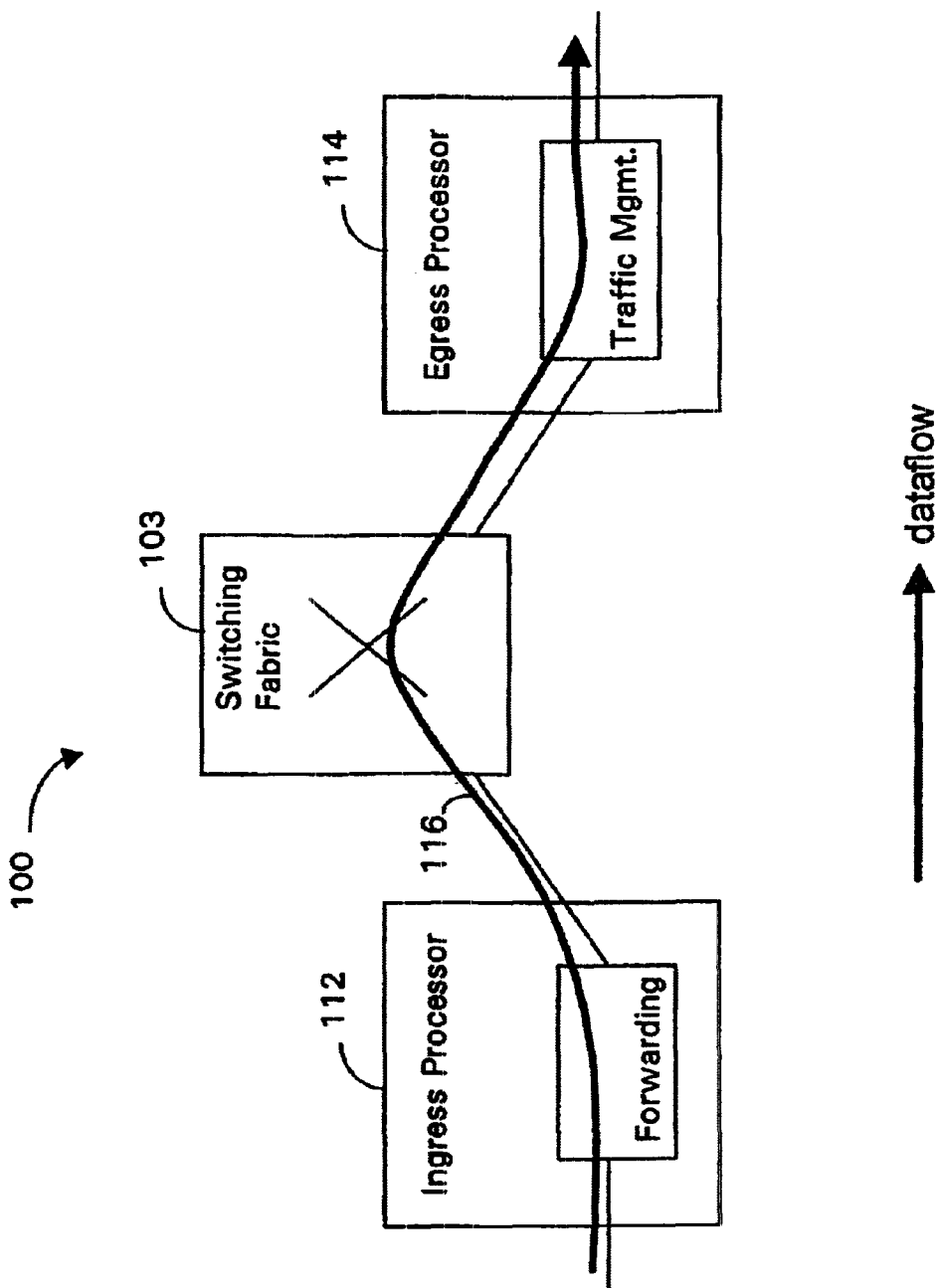


FIG. 5

Explore Litigation Insights

Docket Alarm provides insights to develop a more informed litigation strategy and the peace of mind of knowing you're on top of things.

Real-Time Litigation Alerts



Keep your litigation team up-to-date with **real-time alerts** and advanced team management tools built for the enterprise, all while greatly reducing PACER spend.

Our comprehensive service means we can handle Federal, State, and Administrative courts across the country.

Advanced Docket Research



With over 230 million records, Docket Alarm's cloud-native docket research platform finds what other services can't. Coverage includes Federal, State, plus PTAB, TTAB, ITC and NLRB decisions, all in one place.

Identify arguments that have been successful in the past with full text, pinpoint searching. Link to case law cited within any court document via Fastcase.

Analytics At Your Fingertips



Learn what happened the last time a particular judge, opposing counsel or company faced cases similar to yours.

Advanced out-of-the-box PTAB and TTAB analytics are always at your fingertips.

API

Docket Alarm offers a powerful API (application programming interface) to developers that want to integrate case filings into their apps.

LAW FIRMS

Build custom dashboards for your attorneys and clients with live data direct from the court.

Automate many repetitive legal tasks like conflict checks, document management, and marketing.

FINANCIAL INSTITUTIONS

Litigation and bankruptcy checks for companies and debtors.

E-DISCOVERY AND LEGAL VENDORS

Sync your system to PACER to automate legal marketing.