



US006839552B1

(12) **United States Patent**  
**Martin**

(10) **Patent No.:** **US 6,839,552 B1**  
(45) **Date of Patent:** **Jan. 4, 2005**

(54) **SYSTEM AND METHOD FOR REPORTING AN EMERGENCY SITUATION**

(75) Inventor: **Dannie E. Martin**, Casselberry, FL (US)

(73) Assignee: **BellSouth Intellectual Property Corporation**, Wilmington, DE (US)

(\* ) Notice: Subject to any disclaimer, the term of this patent is extended or adjusted under 35 U.S.C. 154(b) by 401 days.

(21) Appl. No.: **09/746,648**

(22) Filed: **Dec. 26, 2000**

(51) **Int. Cl.**<sup>7</sup> ..... **H04Q 7/20**

(52) **U.S. Cl.** ..... **455/404.1; 455/420; 455/414.1**

(58) **Field of Search** ..... 455/404.1, 414.1, 455/418-420, 456.3, 566, 404, 414, 456-457, 421, 408, 411, 521, 566.1, 404.2; 379/37

(56) **References Cited**

**U.S. PATENT DOCUMENTS**

5,663,734 A	9/1997	Krasner	
5,890,061 A *	3/1999	Timm et al. ....	455/404.2
6,011,967 A *	1/2000	Wieck .....	455/404
6,198,914 B1 *	3/2001	Saegusa .....	455/404.2
6,208,877 B1 *	3/2001	Henry, Jr. ....	455/566
6,477,362 B1 *	11/2002	Raith et al. ....	455/404.1
6,477,363 B1 *	11/2002	Ayoub et al. ....	455/404.2
6,518,957 B1 *	2/2003	Lehtinen et al. ....	345/173
6,687,497 B1 *	2/2004	Parvulescu et al. ....	455/420

**FOREIGN PATENT DOCUMENTS**

EP 0 930 770 A2 \* 7/1999 ..... H04N/1/00

**OTHER PUBLICATIONS**

James M. Zagami et al., "Providing Universal Location Services Using a Wireless E911 Location Network", IEEE Communications Magazine, Apr. 1998, pp. 66-71.

James J. Caffery, Jr., et al., "Overview of Radiolocation in CDMA Cellular Systems", IEEE Communications Magazine, Apr. 1998, pp. 38-45.

Mark Moeglein, et al. "An Introduction to Snap Track Server -Aided GPST Technology", available at <http://www.snaptrack.com/atwork.html>.

\* cited by examiner

*Primary Examiner*—William Trost

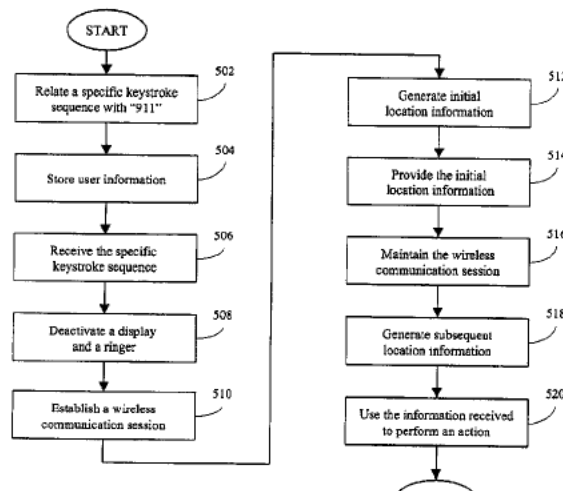
*Assistant Examiner*—Brandon J. Miller

(74) *Attorney, Agent, or Firm*—Cantor Colburn LLP

(57) **ABSTRACT**

The present invention is a system and method for reporting an emergency situation to a called party a using a wireless device. The wireless device comprises a keyboard and a microprocessor. In one embodiment, when a specific key-stroke sequence is entered using the keyboard, the wireless device performs the following tasks: (1) disabling one or more components of the wireless device; (2) establishing a wireless communication session with the called party; (3) communicating with a location system to generate location information pinpointing the location of the wireless device; and (5) providing the location information to the called party. In other embodiments, the wire device performs additional tasks, including: (6) capturing content during the wireless communication; (7) communicating with the location system to generate subsequent location information; and (8) providing one or more of the subsequent location information and the content to the called party. The called party may then use the location information and the content to perform one or more actions, including providing help to the user of the wireless device.

**58 Claims, 5 Drawing Sheets**



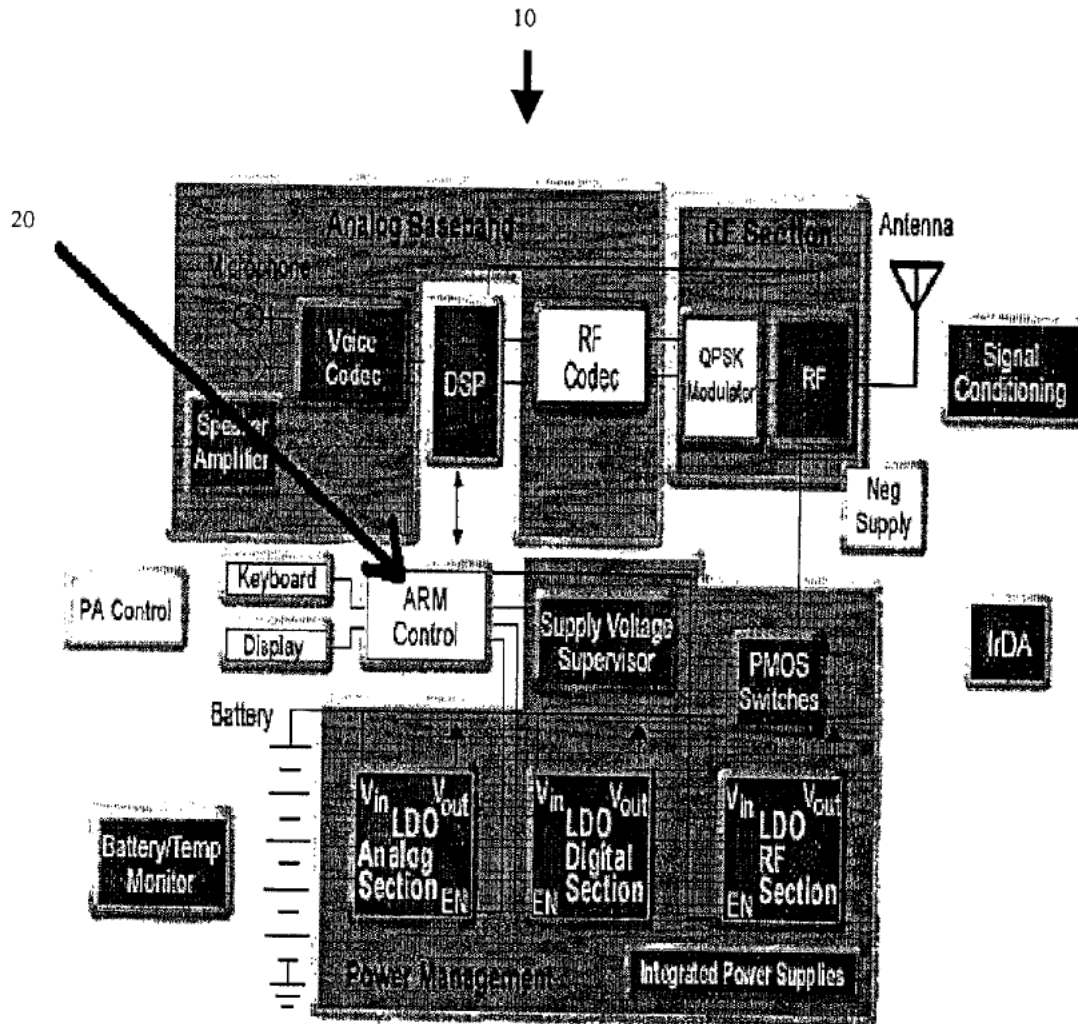


Figure 1  
PRIOR ART

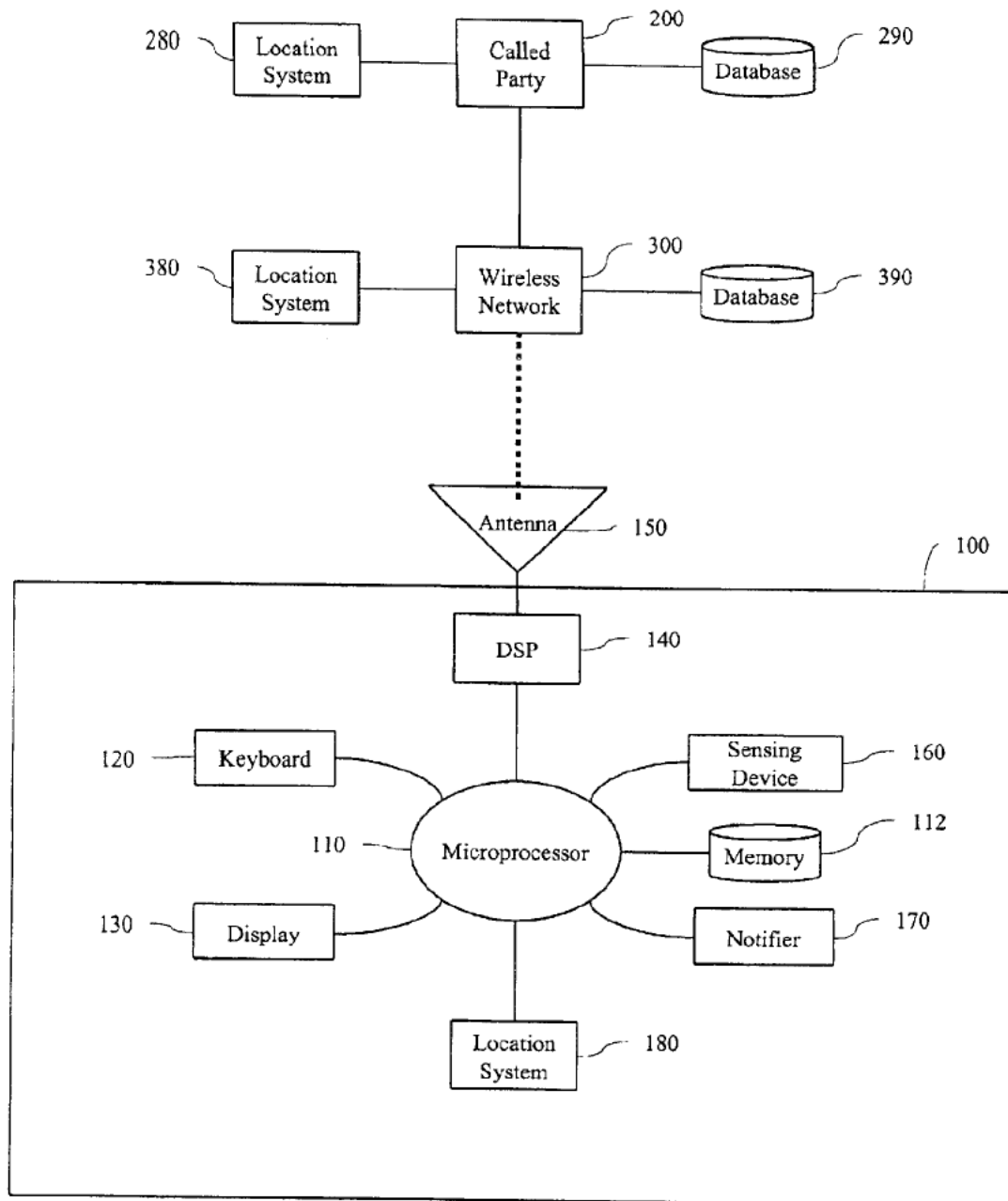


Figure 2

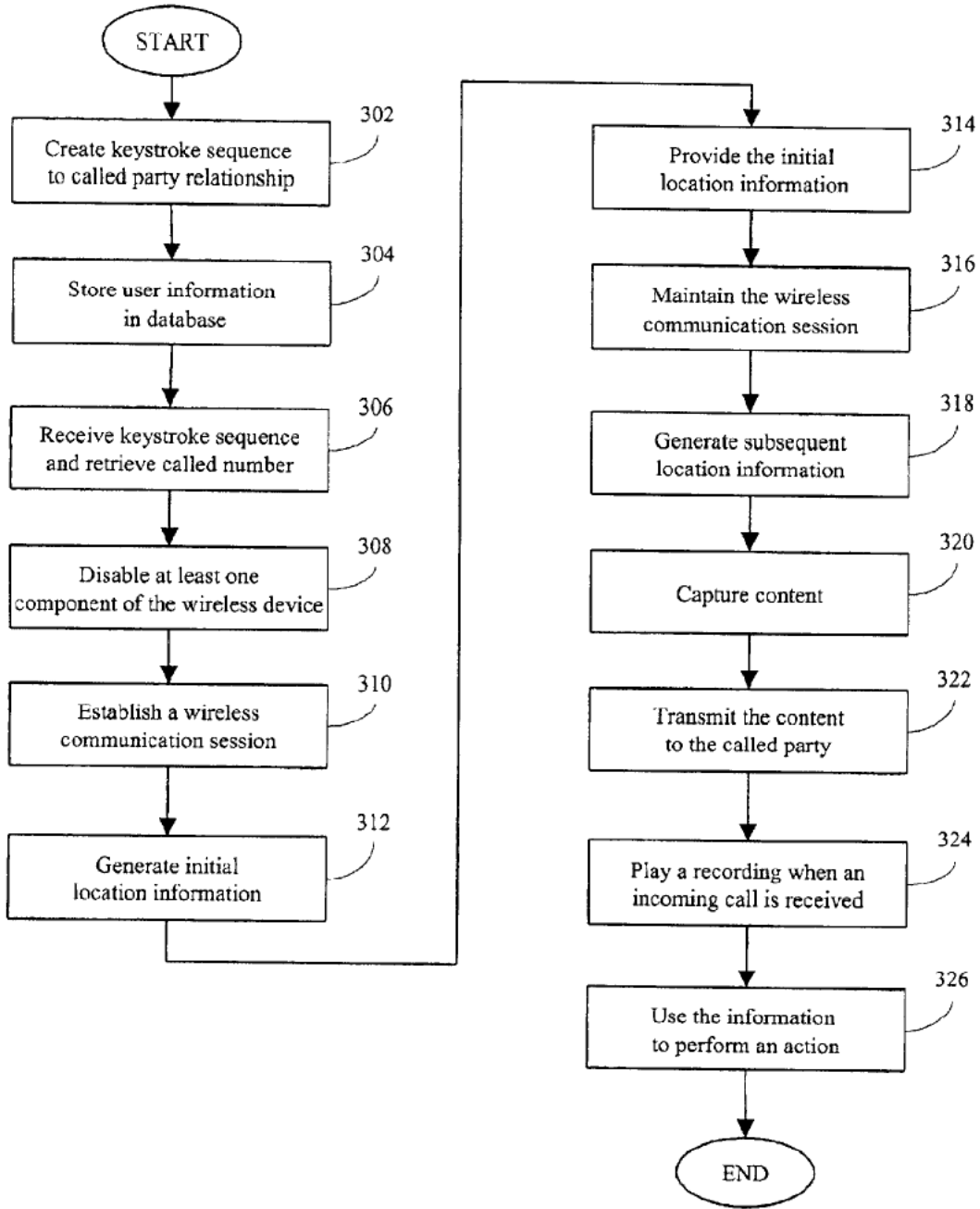


Figure 3

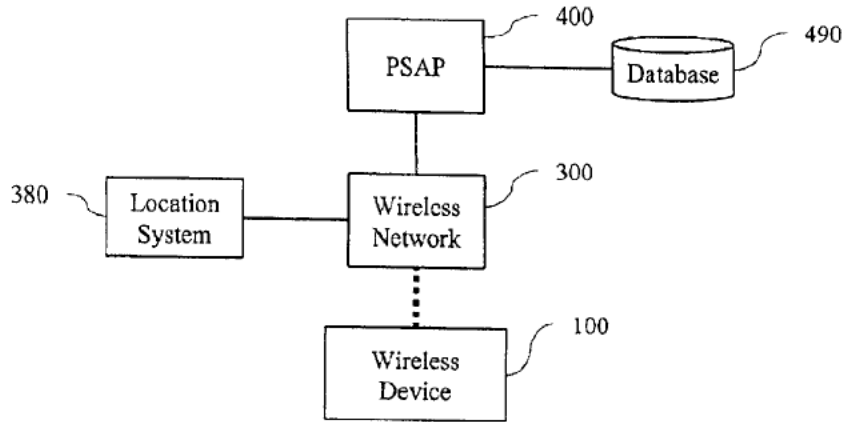


Figure 4

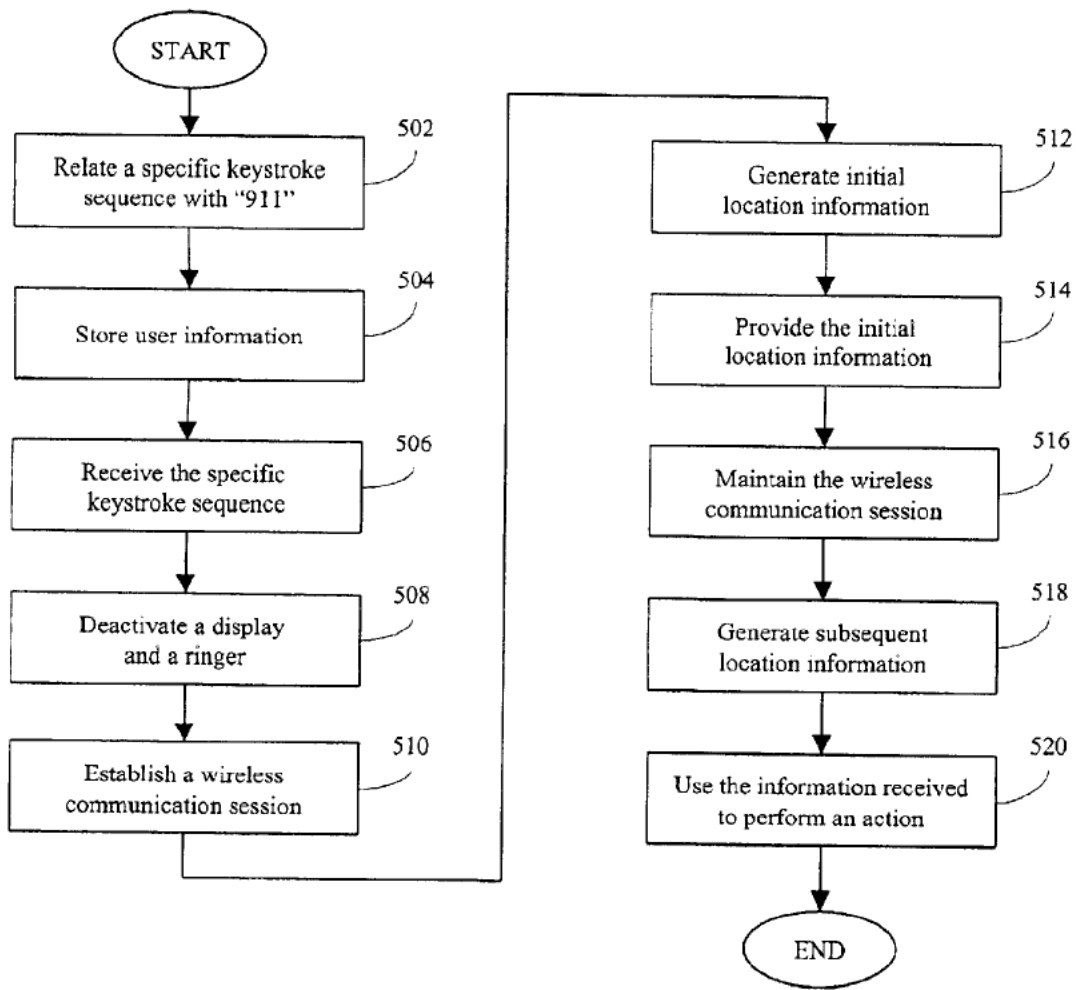


Figure 5

# Explore Litigation Insights

Docket Alarm provides insights to develop a more informed litigation strategy and the peace of mind of knowing you're on top of things.

## Real-Time Litigation Alerts



Keep your litigation team up-to-date with **real-time alerts** and advanced team management tools built for the enterprise, all while greatly reducing PACER spend.

Our comprehensive service means we can handle Federal, State, and Administrative courts across the country.

## Advanced Docket Research



With over 230 million records, Docket Alarm's cloud-native docket research platform finds what other services can't. Coverage includes Federal, State, plus PTAB, TTAB, ITC and NLRB decisions, all in one place.

Identify arguments that have been successful in the past with full text, pinpoint searching. Link to case law cited within any court document via Fastcase.

## Analytics At Your Fingertips



Learn what happened the last time a particular judge, opposing counsel or company faced cases similar to yours.

Advanced out-of-the-box PTAB and TTAB analytics are always at your fingertips.

## API

Docket Alarm offers a powerful API (application programming interface) to developers that want to integrate case filings into their apps.

## LAW FIRMS

Build custom dashboards for your attorneys and clients with live data direct from the court.

Automate many repetitive legal tasks like conflict checks, document management, and marketing.

## FINANCIAL INSTITUTIONS

Litigation and bankruptcy checks for companies and debtors.

## E-DISCOVERY AND LEGAL VENDORS

Sync your system to PACER to automate legal marketing.